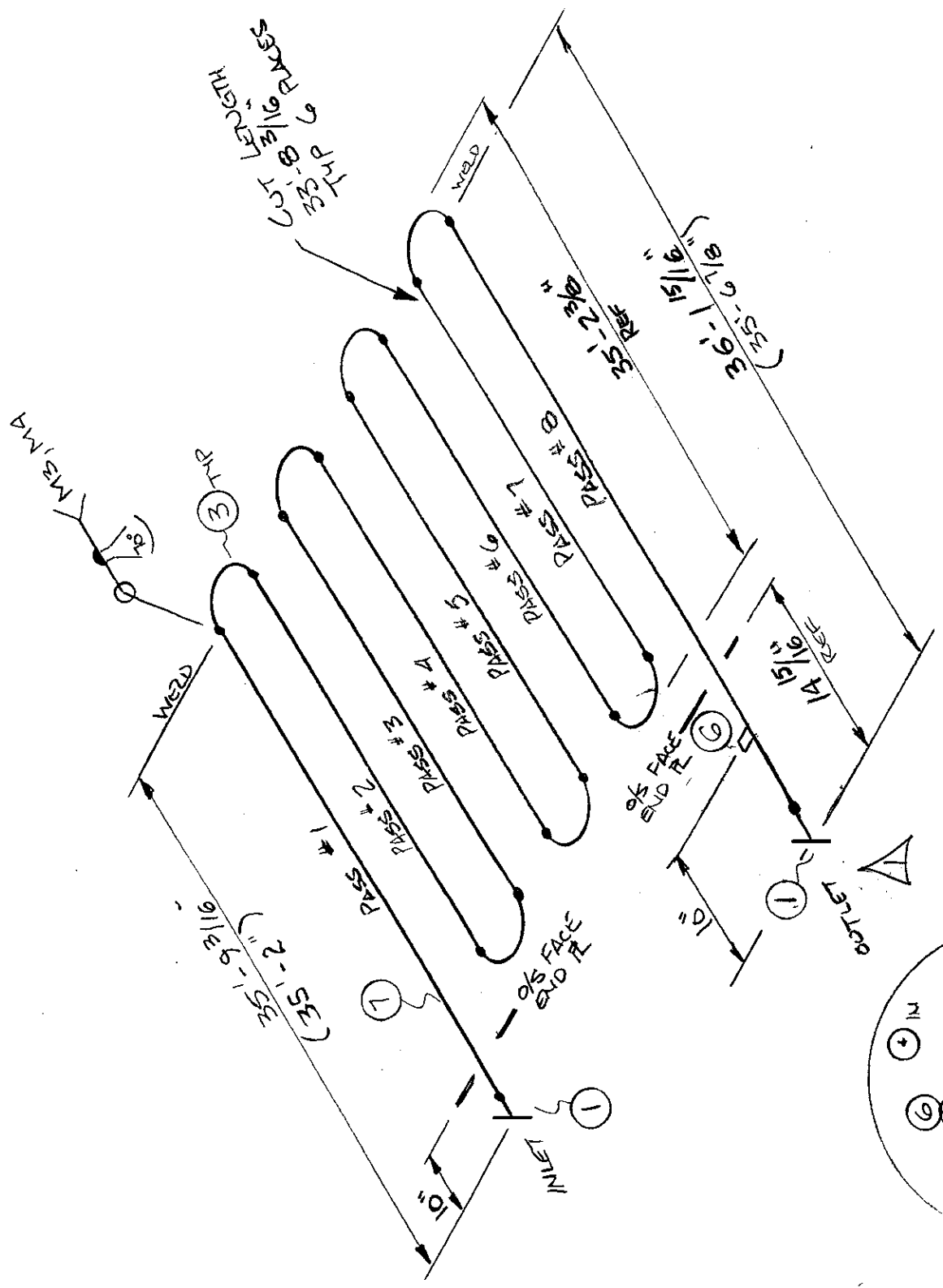


1	2	6" 1500# REWIN SCH 160	SA-350-LF2
2	1	4" 1500# REWIN SCH 160	SA-350-LF2
3	7	6" SCH 160 L/R 180° RETURN	SA-420-MPLG
4			
5			
6	1	3/4" ON 6" GOOD TOL	SA-350-LF2
7	7R	6" SCH 160 6MLS PIPE	SA-350-LF2
8			
9			
10			
11			
12			
13			
14			
15			
16			
17			
18			
19		S/N C3235-1	
20		SURFACE AREA = 498 FT ²	
21		VOLUME = 73.1 FT ³	

MOSS FABRICATION LTD.

DESIGN PRESS.	3000 PSIG	DESIGN TEMP.	200°F
HYDROTEST PRESS.	4500 PSIG	RADIOGRAPHY	100%
CODE:	ANSI B31.3 9000 198 ADD	CORR. ALL.	1/8"
STRESS RELIEF	1 HR @ 150°F ± 25°F	CAPACITY	
SERVICE	SOUR GAS	NO. REQUIRED	ONE
TITLE	PARAMOUNT MAXIMASH LINE HEATERS		
	6" PRE HEAT COIL		
JOB #	3235	LINE #	C3235 - 1
		REV	1



Drawn By:	DRL	Date:	SEPT 29 '99
Approved By:	LJ	Date:	SEPT 29 '99
REV #	DATE	DESCRIPTION	
1	FEB 12 03	REMOVE 4" OUTLET FLANGE	

