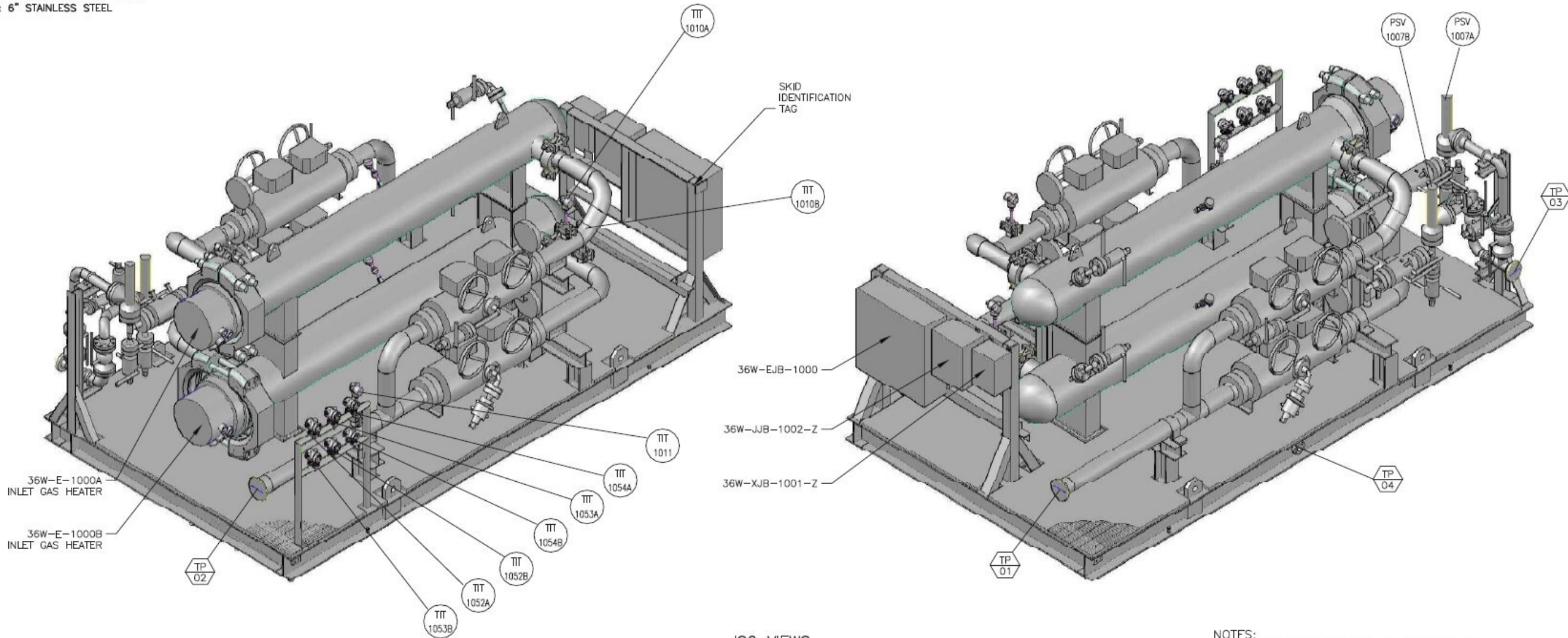


TAG: 36W-A-1000
 DESCRIPTION: INLET GAS HEATER PACKAGE
 CUSTOMER: WOOD GROUP CANADA INC.
 USER: HUSKY OIL OPERATIONS LTD.
 PROJECT: WEST WHITE ROSE PROJECT (WWRP)
 CUST. PO: 10141401-408.0
 IFS JOB: 25169 YEAR: 2018
 INTEGRATED FLOW SOLUTIONS, TYLER, TX, USA
 PH.: 001-903-595-6511
 EMAIL: SUPPORT@IFSOLUTIONS.COM


SKID IDENTIFICATION TAG
 4" x 6" STAINLESS STEEL

TIE IN SCHEDULE		
MK	DESCRIPTION	SIZE/TYPE
TP-01	GAS SUPPLY FROM SEA ROSE	6"-HUB 6GR46 2500#
TP-02	HEATED GAS TO PLANT	6"-HUB 6GR46 2500#
TP-03	TO FLARE HEADER	3"-150# RF SS (NOTE 7)
TP-04	OPEN DRAIN	2"-150# RF CS



ISO VIEWS
 (FOR REFERENCE ONLY)

- NOTES:
- FOR PLAN VIEW SEE DWG. NO.: G-25169-01.
 - FOR ELEVATION VIEW SEE DWG. NO.: G-25169-02.
 - FOR END VIEW SEE DWG. NO.: G-25169-03.
 - ALL DIMENSIONS ± 1/4". DIM. IN mm[ft-in].
 - SKID WILL BE WELDED TO THE PLATFORM
 - FOR CABLE TRAY LAYOUT REFER TO ELECTRIC DWG NO.: CL-25169
 - A 3" 150# SS FLANGE IS INSTALLED @ SKID LIMIT TIE IN TP-03.



INTEGRATED FLOW SOLUTIONS
 6461 REYNOLDS RD, TYLER, TEXAS, USA 75708
 PHONE NUMBER: +1 (903) 595-6511
 EMAIL: SUPPORT@IFSOLUTIONS.COM

REV.	DATE	DESCRIPTION	DES	ENG
4	12JUN20	AS-BUILT	JW	LA
3	13JUL18	REVISED PER CUSTOMER COMMENTS	JG	LA
2	29MAY18	REVISED PER CUSTOMER COMMENTS	JG	LA
1	06MAR18	REVISED PER CUSTOMER COMMENTS	JG	LA
0	24JAN18	APPROVED FOR CONSTRUCTION	JG	LA
A	21SEP17	ISSUED FOR CUSTOMER APPROVAL	JG	LA

PROJECT: WEST WHITE ROSE PROJECT (WWRP)
 CUSTOMER NAME: WOOD GROUP CANADA INC.
 END USER: HUSKY OIL OPERATIONS LTD.
 DESCRIPTION: INLET GAS HEATER PACKAGE
 TAG NUMBER: 36W-A-1000
 CUSTOMER PO#: 10141401-408.0
 ESTIMATED DRY WEIGHT: 48000 lb [21772 kg]
 ESTIMATED OPERATING WEIGHT: 48000 lb [21772 kg]

**GENERAL ARRANGEMENT
 INLET GAS HEATER PACKAGE
 36W-A-1000**

CLIENT No.: WH-P-43W-M-GA-00007-001

SCALE: NONE	SECTION	JOB	SHEET	TOTAL SHEETS	REV.
PM.: T.U.	G - 25169 - 04			4	4

THIS DRAWING IS THE PROPERTY OF INTEGRATED FLOW SOLUTIONS AND SHALL NOT BE REPRODUCED, COPIED, LENT, NOR USED FOR ANY PURPOSE OTHER THAN THAT WHICH IT IS FURNISHED EXCEPT BY WRITTEN PERMISSION.

TIE IN SCHEDULE		
MK	DESCRIPTION	SIZE/TYPE
TP-01	GAS SUPPLY FROM SEA ROSE	6"-HUB 6GR46 2500#
TP-02	HEATED GAS TO PLANT	6"-HUB 6GR46 2500#
TP-03	TO FLARE HEADER	3"-150# RF SS (NOTE 7)
TP-04	OPEN DRAIN	2"-150# RF CS

2652 [8'-8 3/8"]
ESTIMATED OAH

2378 [7'-9 5/8"]

1956 [6'-5"]
36W-E-1000A

1778 [5'-10"]
TOP OF J-BOX
36W-EJB-1000
36W-XJB-1001-Z
36W-JJB-1002-Z
1600 [5'-3"]
1260 [4'-1 5/8"]

1131 [3'-8 1/2"]
COG (DRY/OPER.)

TP
02 838 [2'-9"]
36W-E-1000B

838 [2'-9"] TP
01

290 [11 7/16"]
TOP OF GRATING

128 [5"]
GROUND PAD (TYP.2)
(0'-0")

127 [5"] TP
04
F.S.

WORKLINES
ALL DIMENSIONS
TO THESE LINES
(0'-0")

ELEVATION VIEW

- NOTES:
- FOR PLAN VIEW SEE DWG. NO.: G-25169-01.
 - FOR END VIEW SEE DWG. NO.: G-25169-03.
 - FOR ISO VIEW SEE DWG. NO.: G-25169-04.
 - ALL DIMENSIONS ± 1/4". DIM IN mm[ft-in].
 - SKID WILL BE WELDED TO THE PLATFORM
 - FOR CABLE TRAY LAYOUT REFER TO ELECTRIC DWG NO.: CL-25169
 - A 3" 150# SS FLANGE IS INSTALLED @ SKID LIMIT TIE IN TP-03.



**INTEGRATED
FLOW SOLUTIONS**

6461 REYNOLDS RD, TYLER, TEXAS, USA 75708
PHONE NUMBER: +1 (903) 595-6511
EMAIL: SUPPORT@IFSOLUTIONS.COM

REV.	DATE	DESCRIPTION	DES	ENG
4	09APR20	REVISED PER CUSTOMER COMMENTS	CW	LA
3	13JUL18	REVISED PER CUSTOMER COMMENTS	JG	LA
2	29MAY18	REVISED PER CUSTOMER COMMENTS	JG	LA
1	06MAR18	REVISED PER CUSTOMER COMMENTS	JG	LA
0	24JAN18	APPROVED FOR CONSTRUCTION	JG	LA
5	12JUN20	AS-BUILT	JW	LA

PROJECT: WEST WHITE ROSE PROJECT (WWRP)
CUSTOMER NAME: WOOD GROUP CANADA INC.
END USER: HUSKY OIL OPERATIONS LTD.
DESCRIPTION: INLET GAS HEATER PACKAGE
TAG NUMBER: 36W-A-1000
CUSTOMER PO#: 10141401-408.0
ESTIMATED DRY WEIGHT: 48000 lb [21772 kg]
ESTIMATED OPERATING WEIGHT: 48000 lb [21772 kg]

**GENERAL ARRANGEMENT
INLET GAS HEATER PACKAGE
36W-A-1000**

CLIENT No.: WH-P-43W-M-GA-00002-001				
SCALE: 1/2"=1'-0"	SECTION	JOB	SHEET	TOTAL SHEETS
PM.: T.U.	G-25169-02		4	5

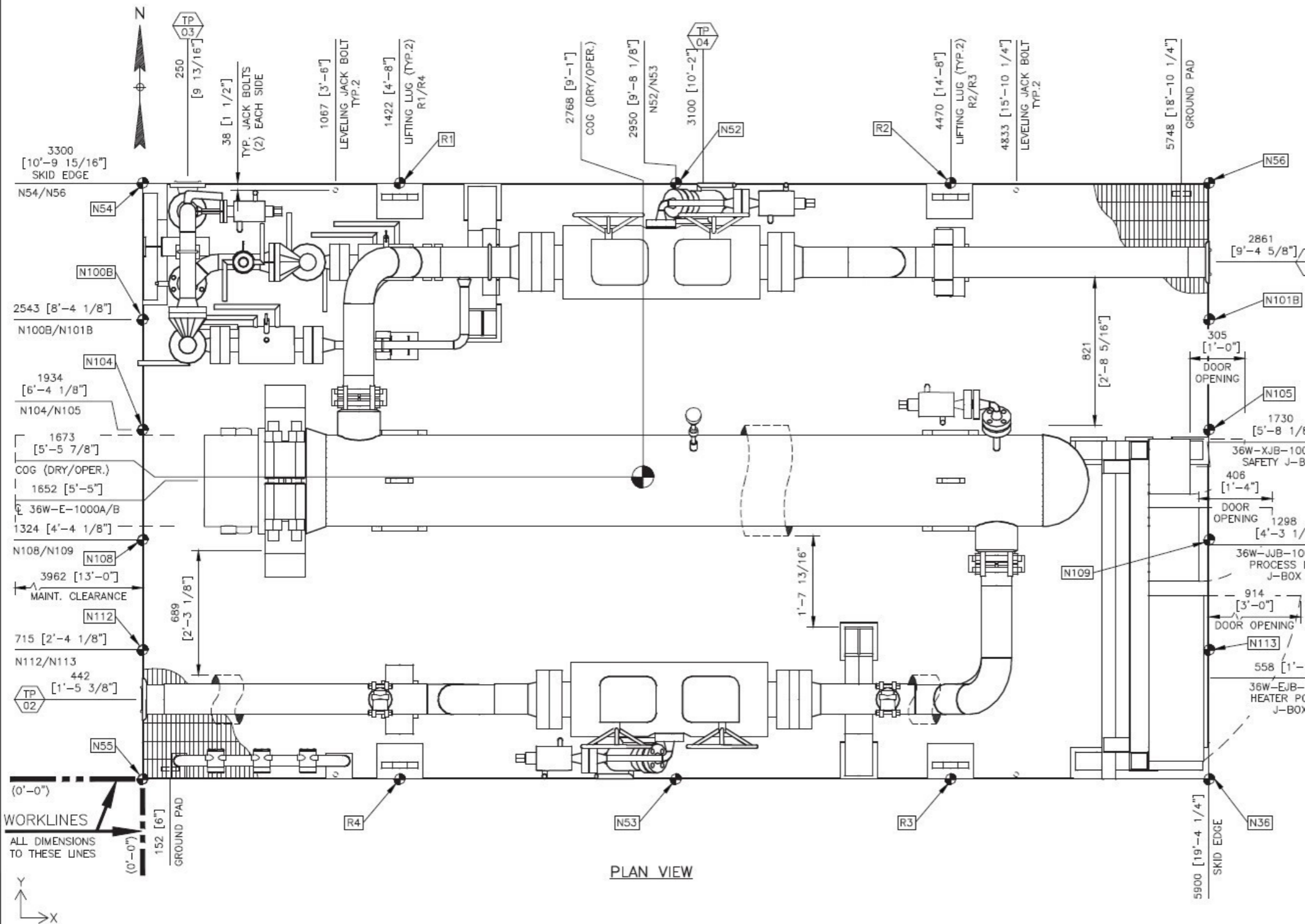
THIS DRAWING IS THE PROPERTY OF INTEGRATED FLOW SOLUTIONS AND SHALL NOT BE REPRODUCED, COPIED, LENT, NOR USED FOR ANY PURPOSE OTHER THAN THAT WHICH IT IS FURNISHED EXCEPT BY WRITTEN PERMISSION.

TIE IN SCHEDULE

MK	DESCRIPTION	SIZE/TYPE
TP-01	GAS SUPPLY FROM SEA ROSE	6"-HUB 6GR46 2500#
TP-02	HEATED GAS TO PLANT	6"-HUB 6GR46 2500#
TP-03	TO FLARE HEADER	3"-150# RF SS (NOTE 7)
TP-04	OPEN DRAIN	2"-150# RF CS

FOUNDATION LOADS

JOINT		FX[KN]	LC	FY[KN]	LC	FZ[KN]	LC
R1	MAX	7.195	40	23.306	39	84.397	60
R1	MIN	-6.347	35	-188.339	66	-137.459	66
R4	MAX	5.431	36	21.248	35	243.274	66
R4	MIN	-5.54	39	-163.624	66	4.134	65
R3	MAX	7.06	36	17.517	35	131.827	66
R3	MIN	-17.418	67	-113.276	66	2.774	64
R2	MAX	3.154	40	14.973	39	56.623	3
R2	MIN	-4.972	67	-129.086	66	-47.636	66
N52	MAX	4.03	37	6.16	41	38.404	3
N52	MIN	-4.611	38	-35.84	66	4.194	62
N53	MAX	5.069	41	6.105	37	39.281	3
N53	MIN	-4.612	34	-6.395	38	5.947	65
N54	MAX	3.283	40	5.138	41	10.553	39
N54	MIN	-2.901	35	-19.443	66	-18.835	66
N55	MAX	0.48	37	0.764	53	3.634	3
N55	MIN	-0.48	34	-0.764	50	0.413	63
N56	MAX	0.426	37	0.763	53	2.835	3
N56	MIN	-2.415	67	-13.442	66	0.359	30
N36	MAX	3.105	52	4.347	67	7.909	66
N36	MIN	-44.577	67	-5.68	66	-48.094	67
N100B	MAX	3.242	37	1.589	35	26.63	66
N100B	MIN	-3.833	38	-7.789	66	-3.791	35
N101B	MAX	6.723	41	0.65	41	3.801	3
N101B	MIN	-12.555	67	-0.573	34	-0.259	62
N104	MAX	6.371	37	0.212	39	4.631	3
N104	MIN	-6.466	38	-0.119	36	0.374	63
N105	MAX	20.609	41	1.301	41	5.851	3
N105	MIN	-38.465	67	-5.01	66	-20.925	67
N108	MAX	5.738	36	0.185	39	3.396	3
N108	MIN	-5.798	39	-0.124	36	0.276	65
N109	MAX	10.47	40	0.715	41	4.24	3
N109	MIN	-21.997	67	-2.709	66	-9.844	67
N112	MAX	4.647	40	0.18	39	3.239	3
N112	MIN	-4.498	35	-0.13	36	0.285	65
N113	MAX	6.765	41	0.173	41	4.778	3
N113	MIN	-11.19	67	-0.096	34	0.411	64
TOTALS:	MAX	98.701	41	92.75	37	401.097	3
TOTALS:	MIN	-175.719	67	-686.302	66	102.395	62



PLAN VIEW

- NOTES:
- FOR ELEVATION VIEW SEE DWG. NO.: G-25169-02.
 - FOR END VIEW SEE DWG. NO.: G-25169-03.
 - FOR ISO VIEW SEE DWG. NO.: G-25169-04.
 - ALL DIMENSIONS ± 1/4". DIM. IN mm[ft-in].
 - SKID WILL BE WELDED TO THE PLATFORM
 - FOR CABLE TRAY LAYOUT REFER TO ELECTRIC DWG NO.: CL-25169
 - A 3" 150# SS FLANGE IS INSTALLED @ SKID LIMIT TIE IN TP-03.

INTEGRATED FLOW SOLUTIONS
 6461 REYNOLDS RD, TYLER, TEXAS, USA 75708
 PHONE NUMBER: +1 (903) 595-6511
 EMAIL: SUPPORT@IFSOLUTIONS.COM

REV.	DATE	DESCRIPTION	DES	ENG
4	12JUN20	AS-BUILT	JW	LA
3	18JUL18	REVISED PER CUSTOMER COMMENTS	JG	LA
2	29MAY18	REVISED PER CUSTOMER COMMENTS	JG	LA
1	06MAR18	REVISED PER CUSTOMER COMMENTS	JG	LA
0	24JAN18	APPROVED FOR CONSTRUCTION	JG	LA
A	21SEP17	ISSUED FOR CUSTOMER APPROVAL	JG	LA

PROJECT: WEST WHITE ROSE PROJECT (WWRP)
 CUSTOMER NAME: WOOD GROUP CANADA INC.
 END USER: HUSKY OIL OPERATIONS LTD.
 DESCRIPTION: INLET GAS HEATER PACKAGE
 TAG NUMBER: 36W-A-1000
 CUSTOMER PO#: 10141401-408.0
 ESTIMATED DRY WEIGHT: 48000 lb [21772 kg]
 ESTIMATED OPERATING WEIGHT: 48000 lb [21772 kg]

GENERAL ARRANGEMENT INLET GAS HEATER PACKAGE 36W-A-1000

CLIENT No.: WH-P-43W-M-GA-00001-001

SCALE: 1/2"=1'-0"	SECTION	JOB	SHEET	TOTAL SHEETS	REV.
PM: T.U.	G-25169-01			4	4

THIS DRAWING IS THE PROPERTY OF INTEGRATED FLOW SOLUTIONS AND SHALL NOT BE REPRODUCED, COPIED, LENT, NOR USED FOR ANY PURPOSE OTHER THAN THAT WHICH IT IS FURNISHED EXCEPT BY WRITTEN PERMISSION.