

CHOP/HOOP FILAMENT WOUND FIBERGLASS FABRICATION NOTES

- 1. LINER TO BE ISOPHTHALIC POLYESTER/C-VEIL WITH MEKP CURE 100 MIL THICK.
- 2. STRUCTURAL TO BE ISOPHTHALIC POLYESTER WITH MEKP CURE, 0.07" PER LAYER.
- 3. EXTERIOR NATURAL WAX COAT TO CONTAIN 3% STYWAX AND 0.25% UV-9.
- 4. FABRICATED TO APPLICABLE SECTIONS OF ASTM D3299.
- 5. SOME ITEMS MAY BE ROTATED OR OMITTED IN ELEVATION VIEW FOR CLARITY. SEE TOP VIEW FOR TRUE ORIENTATION.
- 6. ELEVATIONS ARE FROM OUTSIDE BOTTOM.
- 7. PROJECTIONS ARE FROM OUTSIDE SHELL.
- 8. ALL NOZZLE LOADS TO BE INDEPENDENTLY REACTED BY OTHERS.
- 9. ALL NOZZLES ARE ANSI B16.5 150# HOLE PATTERN, FLAT FACE UNLESS OTHERWISE NOTED.
- 10. ALL FLANGED NOZZLES TO BE SPOT FACED.
- 11. BOLT HOLES TO STRADDLE RADIAL CENTERLINES.
- 12. BOLT TORQUE TO BE 30-35 FT.-LB. MAXIMUM.
- 13. ALL FLANGES WITHOUT BLINDS TO BE COVERED WITH PLYWOOD PRIOR TO SHIPMENT.
- 14. FASTENERS AND GASKETS FOR SERVICE BY OTHERS UNLESS OTHERWISE NOTED.
- 15. FASTENERS TO BE 304SS UNLESS OTHERWISE NOTED.

LAMINATE SEQUENCE SYMBOLS

- V - 10 MIL THICK "C" GLASS VEIL 7% GLASS CONTENT.
- C - 45 MIL THICK 1.5 OZ./SQ. FT. CHOPPED "E" GLASS ROVING 30% GLASS CONTENT.
- M - 38 MIL THICK 1.5 OZ./SQ. FT. CHOPPED "E" GLASS MAT 30% GLASS CONTENT.
- R - 70 MIL THICK 28.3 OZ/SQ. YD. GLASS WOVEN ROVING 45% GLASS CONTENT.
- N - 15-20 MIL THICK APERTURED NEXUS VEIL.
- CH - 70 MIL THICK 2.4 OZ./SQ. FT. CHOPPED "E" GLASS ROVING AND 68 STRANDS OF 250 YIELD CONTINUOUS "E" GLASS HOOP STRANDS 50% GLASS CONTENT.

WARNING NOTES - FAILURE TO COMPLY WITH THE FOLLOWING NOTES WILL VOID WARRANTY

THIS TANK DESIGNED FOR ATMOSPHERIC PRESSURE ONLY (MUST BE VENTED)  
ALL CLOSED TOP TANKS MUST HAVE A VENT OF EQUAL OR GREATER SIZE THAN THE LARGEST INLET OR OUTLET.

VENT IS NOT DESIGNED FOR COMPRESSED AIR UNLOADING.

A COMBINATION VENT/OVERFLOW FLANGE INCREASES THE POTENTIAL FOR TANK PRESSURIZATION IF THE OVERFLOW BECOMES CLOGGED.

FOUNDATION PAD MUST BE FABRICATED UNIFORM IN TEXTURE AND APPEARANCE, AND MEET A SURFACE PLANE TOLERANCE (1/8" IN 10 FEET). PAD MUST BE DESIGNED FOR A FULLY LOADED TANK, SOIL PROPERTIES AND FREEZE/THAW FORCES. SPECIAL ATTENTION MUST BE GIVEN TO THE BOTTOM EDGE OF THE TANK. THIS EDGE MUST BE IN COMPLETE CONTACT WITH THE PAD.

SHIMMING UNDER HOLD-DOWN LUGS (IF REQUIRED) SHOULD BE DONE WITH TANK 1/4 TO 1/3 FULL OF WATER. DO NOT TIGHTEN ANCHOR BOLTS WITHOUT SHIMMING UNDER THE LUGS TO AVOID DAMAGING STRESSES ON THE TANK.

DESIGN CONDITIONS MUST BE PROVIDED TO CONFIRM CORROSION RESISTANCE OF RESIN SELECTION  
WARRANTY VOID IF DESIGN CONDITIONS ARE NOT SUPPLIED


DESIGN CONDITIONS

CHEMICAL ENVIRONMENT: SEWAGE  
MAX. TEMPERATURE: AMBIENT  
PRESSURE: ATMOSPHERIC  
VACUUM: NONE  
SPECIFIC GRAVITY: 1.3  
WIND:  
SEISMIC ZONE:  
CAPACITY: 6000 GALLONS  
EMPTY WEIGHT: 2000 POUNDS  
FILLED W/WATER WEIGHT: 52,040 POUNDS

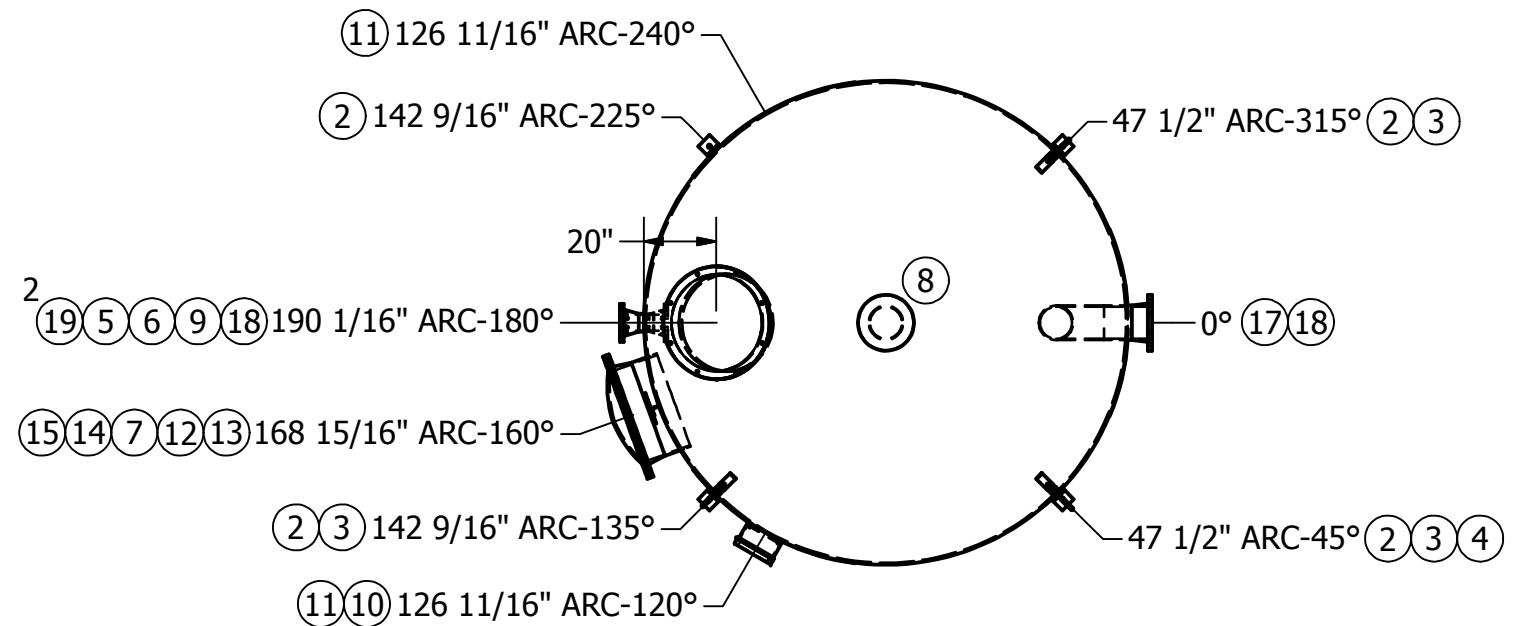
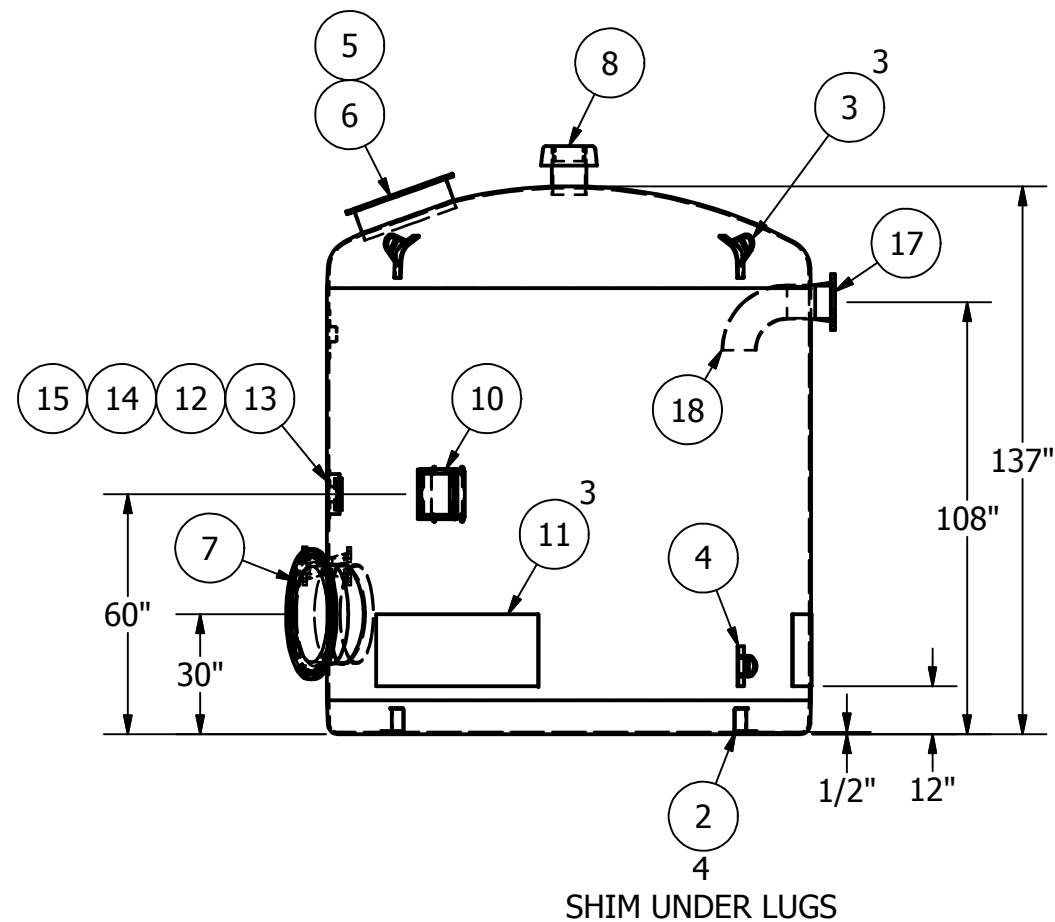
EQUIPMENT NO.:  
SERIAL NUMBER: 13577–13580

S.O. 3237

APPROVED FOR MFG.

				TOLERANCES – UNLESS OTHERWISE SPECIFIED				<div><div></div><div>SIOUX FALLS, SOUTH DAKOTA www.designtanks.com</div></div> <div>TITLE FBDT 10’–0” X 11’–5” 6000 GALLON</div> <div>NO. OF TANKS: 4</div> <div><div>COLOR: GRAY OVERCOAT</div><div>DATE: 10/25/2011</div><div>DRAWN BY:MSG</div></div> <div><div>CUSTOMER: POLYWEST</div><div>SIZE B</div><div>DRAWING NO./REVISION LTR. 37238A</div></div> <div><div>RFQ # 3108</div><div>P.O. # 29521</div><div>SCALE 1:</div><div>SHEET 1 of 4</div></div>			
				+/- 1/4” ON DIMENSIONS							
				<u>NOZZLE INSIDE DIA.</u>		<u>PERMISSIBLE ANGULAR DEVIATION</u>					
				UP TO 10 INCH		1°					
				10 INCH & LARGER		1/2°					
				PROPRIETARY NOTICE							
				NOTICE: THIS DRAWING WAS ORIGINATED BY AND IS THE PROPERTY OF DESIGN TANKS LLC, WHO RESERVES ALL PATENT, PROPRIETARY DESIGN, USE, SALE, MANUFACTURING, AND/OR REPRODUCTION RIGHTS THERETO. UNDER PENALTY OF LAW MAY NOT BE USED IN ANY FORM BY ANY COMPANY WITHOUT THE EXPRESSED WRITTEN CONSENT OF DESIGN TANKS LLC.							
REVISION HISTORY											
REV	DESCRIPTION	DATE	APPROVED								
A	ADDED DRY HEAT CURE	12/7/11	MSG								

A




VIEW A-A  
SCALE 1:48

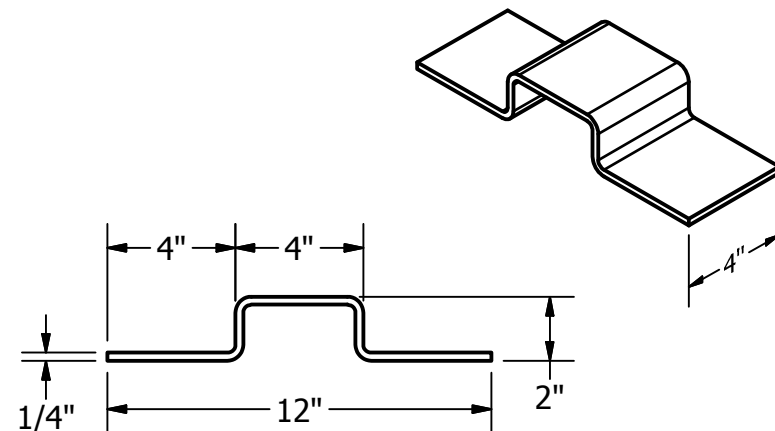
**TANK SIDEWALL AND TOP HAVE 2" THK. POLYURETHANE  
INSULATION WITH 40 MIL GRAY POLYUREA OVERCOAT.**

ISOPHTHALIC POLYESTER/C-VEIL/MEKP

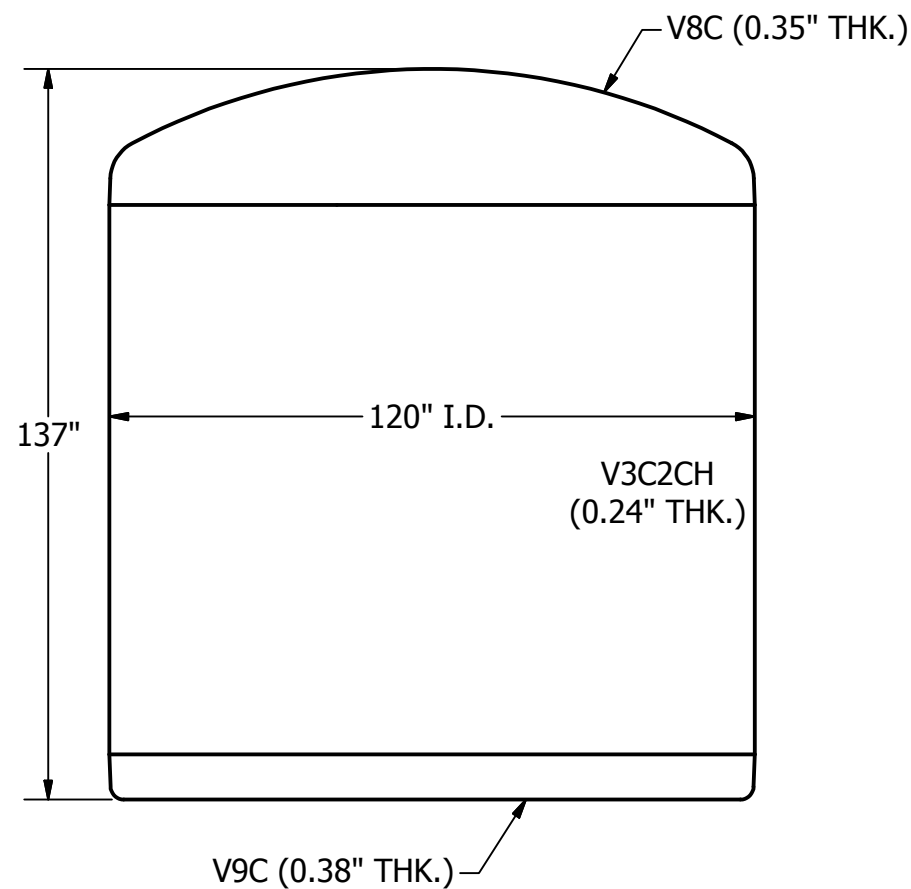
TOLERANCES - UNLESS OTHERWISE SPECIFIED	
+/- 1/4" ON DIMENSIONS	
NOZZLE INSIDE DIA.	PERMISSIBLE ANGULAR DEVIATION
UP TO 10 INCH	1°
10 INCH & LARGER	1/2°
PROPRIETARY NOTICE	
NOTICE: THIS DRAWING WAS ORIGINATED BY AND IS THE PROPERTY OF DESIGN TANKS LLC, WHO RESERVES ALL PATENT, PROPRIETARY DESIGN, USE, SALE, MANUFACTURING, AND/OR REPRODUCTION RIGHTS THERETO. UNDER PENALTY OF LAW MAY NOT BE USED IN ANY FORM BY ANY COMPANY WITHOUT THE EXPRESSED WRITTEN CONSENT OF DESIGN TANKS LLC.	

APPROVED FOR MFG.

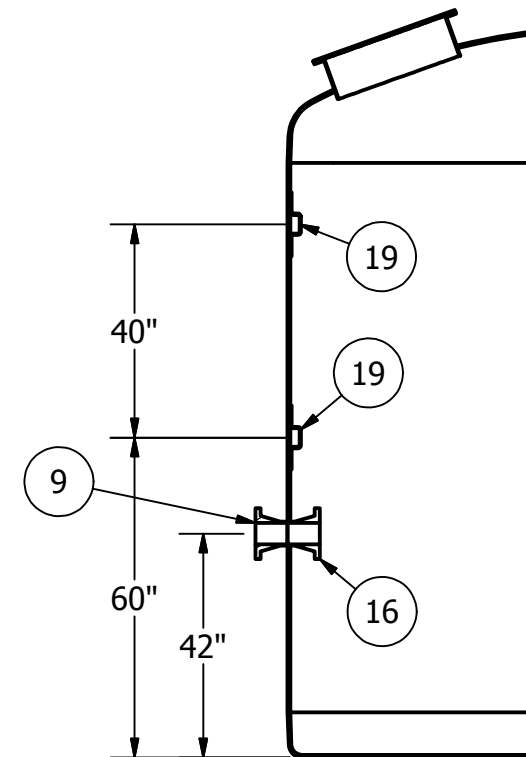
 Design Tanks		SIOUX FALLS, SOUTH DAKOTA	
		www.designtanks.com	
TITLE FBDT 10'-0" X 11'-5" 6000 GALLON			
		NO. OF TANKS: 4	
COLOR: GRAY OVERCOAT		DATE: 10/25/2011	DRAWN BY:MSG
CUSTOMER: POLYWEST		SIZE	DRAWING NO./REVISION LTR.
		B	37238A
RFQ # 3108	P.O. # 29521	SCALE 1:	SHEET 2 of 4



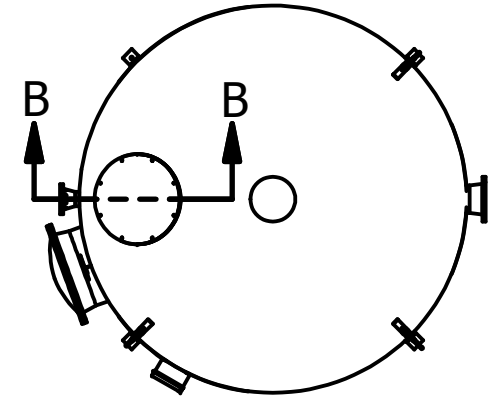
ITEM 19 - FRP MOUNTING LUG  
2 REQ'D.



TANK CONSTRUCTION - REF.  
LAMINATE SEQUENCE ON SHT. 1



SECTION B-B  
SCALE 1:36



ISOPHTHALIC POLYESTER/C-VEIL/MEKP

TOLERANCES - UNLESS OTHERWISE SPECIFIED	
+/- 1/4" ON DIMENSIONS	
<u>NOZZLE INSIDE DIA.</u>	<u>PERMISSIBLE ANGULAR DEVIATION</u>
UP TO 10 INCH	1°
10 INCH & LARGER	1/2°
PROPRIETARY NOTICE	
NOTICE: THIS DRAWING WAS ORIGINATED BY AND IS THE PROPERTY OF DESIGN TANKS LLC, WHO RESERVES ALL PATENT, PROPRIETARY DESIGN, USE, SALE, MANUFACTURING, AND/OR REPRODUCTION RIGHTS THERETO. UNDER PENALTY OF LAW MAY NOT BE USED IN ANY FORM BY ANY COMPANY WITHOUT THE EXPRESSED WRITTEN CONSENT OF DESIGN TANKS LLC.	

APPROVED FOR MFG.



SIOUX FALLS, SOUTH DAKOTA  
www.designtanks.com

TITLE FBDT 10'-0" X 11'-5" 6000 GALLON

COLOR: GRAY OVERCOAT		DATE: 10/25/2011		DRAWN BY: MSG	
CUSTOMER: POLYWEST		SIZE		DRAWING NO./REVISION LTR.	
		B		37238A	
RFQ # 3108		P.O. # 29521		SCALE 1:	
				SHEET 3 of 4	

Parts List								
ITEM	QTY	TITLE	PART NUMBER	PROJECTION	ORIENTATION	ELEVATION	RADIUS FROM EDGE	NOTES
1	1	FBDT 10'-0" X 11'-5" TANK	104632					
2	4	HOLD DOWN LUG 304SS HEAVY DUTY WITH 7/8 IN HOLE						
3	3	304SS FULL DOME LIFT LUG	101236					
4	1	304SS FOAM TANK SIDE LIFT LUG	101516					
5	1	24" BOLT-DOWN MANWAY, DARK GRAY	101526	6"	180°		20"	304SS BOLT SETS
6	1	1/8" X 24 I.D. X 28 1/4" O.D. GASKET, EPDM	100902					
7	1	24" 15# SIDE MANWAY VE/EPDM/304, DARK GRAY		8"	160°	30"		3 REIN.
8	1	8" MUSHROOM VENT WITH SCREEN, DARK GRAY	101225		TDC			
9	1	4" CONICAL GUSSET FLANGE VE/MEKP		6"	180°	42"		2 REIN., INLET
10	1	HEAT SYSTEM CONTROL BOX	101438		120°	60"		
11	3	500 WATT HEAT PANEL	101853					
12	1	FRP ANGLE BRACKET FOR LABEL PLATE	300227					
13	1	8 X 10 LABEL PLATE, FRP	100890		160°	60"		
14	1	CONTENTS LABEL	102046					
15	1	NO AIR UNLOADING ADHESIVE LABEL	104808					
16	1	4" CONICAL GUSSET FLANGE VE/MEKP		6"	180°	42"		INSIDE TANK
17	1	8" CONICAL GUSSET FLANGE VE/MEKP		6"	0°	108"		
18	1	8" X 90° FRP SWEEP ELBOW	101991		0°			
19	2	FRP MOUNTING LUG, 2" PROJ.	100462					
20	1	2" THK. POLYURETHANE INSULATION	300017					W/40 MIL GRAY POLYUREA OVERCOAT
21	1	DRY HEAT POST CURE & RINSE	101045					

ISOPHTHALIC POLYESTER/C-VEIL/MEKP

TOLERANCES – UNLESS OTHERWISE SPECIFIED	
+/- 1/4" ON DIMENSIONS	
<u>NOZZLE INSIDE DIA.</u>	<u>PERMISSIBLE ANGULAR DEVIATION</u>
UP TO 10 INCH	1°
10 INCH & LARGER	1/2°
PROPRIETARY NOTICE	
NOTICE: THIS DRAWING WAS ORIGINATED BY AND IS THE PROPERTY OF DESIGN TANKS LLC, WHO RESERVES ALL PATENT, PROPRIETARY DESIGN, USE, SALE, MANUFACTURING, AND/OR REPRODUCTION RIGHTS THERETO. UNDER PENALTY OF LAW MAY NOT BE USED IN ANY FORM BY ANY COMPANY WITHOUT THE EXPRESSED WRITTEN CONSENT OF DESIGN TANKS LLC.	

APPROVED FOR MFG.



Design Tanks

SIOUX FALLS, SOUTH DAKOTA  
www.designtanks.com

TITLE FBDT 10'–0" X 11'–5" 6000 GALLON

COLOR: GRAY OVERCOAT			DATE: 10/25/2011		DRAWN BY:MSG	
CUSTOMER: POLYWEST			SIZE	DRAWING NO./REVISION LTR.		
			B	37238A		
RFQ # 3108		P.O. # 29521		SCALE 1:		SHEET 4 of 4