

GENERAL NOTES:

- DWG -201:
1. QUALITY CONTROL PROGRAM NUMBER: AQP-1317(S)
 2. WELDING PROCEDURE REGISTRATION NUMBER: WP1970.2
 3. HEAD, SHELL & REPAD MATERIAL: SA-516-70N, IMPACTS EXEMPT PER UG-20 (f)(1-5)
 4. FLANGE MATERIAL: SA-105N, MUST BE FINED GRAINED PRACTICE, IMPACTS EXEMPT PER UG-20 (f)(1-5)
 5. PIPE MATERIAL: SA-106B, IMPACTS EXEMPT PER UG-20 (f)(1-5)
 6. BOLTING MATERIALS: SA-193-B7M / SA-194-2HM, IMPACTS EXEMPT PER UCS-66 NOTE C
 7. PRODUCTION WELDS: IMPACTS EXEMPT PER UG-20 (f)(1-5)
 8. ALL WEAR PADS & REPADS TO HAVE 1/4" NPT WEEP HOLE LOCATED AT LOWEST ELEVATION
 9. ALL BOLT HOLES TO STRADDLE CENTERLINE
 10. ALL OUTSIDE PROJECTIONS ARE TO BE MEASURED ALONG CENTERLINE OF NOZZLE
 11. INSIDE PROJECTIONS WITHOUT INTERNAL FLANGES ARE MEASURED ALONG SHORTSIDE OF NOZZLE
 12. INSIDE PROJECTIONS WITH INTERNAL FLANGES ARE MEASURED ALONG CENTERLINE OF NOZZLE
 13. FABRICATION TOLERANCES AS PER BW&ML DWG: TOL2002
 14. VESSEL REGISTRATION: AB
 15. VESSEL IS INTERNALLY LINED, ALL INSIDE EDGES TO BE RADIUSUED TO 1/8"

STRUCTURAL:

- DWGS -203,501:
16. WELD PROCEDURE: GM-WPS-01, SM-WPS-01, FM-WPS-MC-1
 - WELDERS AND WELD PROCEDURES QUALIFIED AS PER CSA W59
 17. SPLICES REQUIRE BILTON ENGINEERING APPROVAL

SELECT CHEM/AML:

- DWGS -201~202:
18. SELECT CHEMISTRY:
 - NACE MR 0175/ISO 15156 FOR WETTED PARTS
 - HEADS, SHELL
 - MAXIMUM CARBON CONTENT = 0.23%
 - MAXIMUM CARBON EQUIVALENT (CE) = 0.43%
 19. HIC TESTING: NIL
 20. CUSTOMER AML: NIL

NDE:

- DWG -201:
21. ULTRASONIC TESTING: NIL
 22. MAGNETIC PARTICLE TESTING: NIL
 23. RADIOGRAPHY: NONE AS PER UW-11(c)
 24. HARDNESS TESTING: NIL
 25. PWHT: NONE AS PER UCS-56

- DWG -501:
26. ULTRASONIC TESTING: NIL
 27. MAGNETIC PARTICLE TESTING: NIL
 28. RADIOGRAPHY: NIL

BILTON TESTING:

- DWG -201:
29. AIR SOAP LEAK TEST: NIL
 30. HYDROTEST: 75 PSIG (517 kPag)

N5 SPOOL NOTES:

- DWG -202: ALL WETTED MATERIALS COMPLY WITH NACE
31. DESIGNED AND BUILT TO ASME B31.3 2022 EDITION
 32. QUALITY CONTROL PROGRAM NUMBER: AQP-1317(S)
 33. WELDING PROCEDURE REGISTRATION NUMBER: WP1970.2
 34. IMPACT TESTS: EXEMPT AS 323.2.2A
 35. ALL BOLT HOLES TO STRADDLE CENTERLINE
 36. FABRICATION TOLERANCES AS PER BW&ML DWG: TOL2002
 37. PIPING SERVICE: NORMAL
 38. DESIGN PRESSURE: 50 PSIG
 39. DESIGN TEMPERATURE: 100°F
 40. MDMT: -20°F
 41. CORROSION ALLOWANCE: 1/8"
 42. ULTRASONIC TESTING: NIL
 43. MAGNETIC PARTICLE TESTING: NIL
 44. RADIOGRAPHY: 5%
 45. HARDNESS TESTING: NIL
 46. PWHT: NIL
 47. HYDROTEST: 75 PSIG, HOLD 1 HOUR

AS-BUILT

BILTON

DATE: 2025/04/24

TC

INITIALS

SURFACE PREPARATION / COATING:

- DWGS -201,501:
48. LOOSE ITEMS TO BE COATED:
 - (1) x TRUCK OUT SPOOL, 3" CL150 RF THREADED FLANGE, 3" x 4" TRUCK OUT NIPPLE (N5)
 - (1) x 1" 3M THREADED PIPING
 - LOOSE ITEMS TO BE COATED AND LINED:
 - (1) x 24" CL150 RF BLIND FLANGE (M1)
 - (2) x 4" CL150 RF BLIND FLANGE (N3,N4)
 - (1) x 4" CL150 RF BLIND FLANGE, TAPPED TO 1" (N7)
 49. EXTERNAL SANDBLAST: SSPC-SP6 (SILICA)
 50. EXTERNAL COATING:
 - PRIMER: ONE COAT CARBOLINE CARBOGUARD 8922, 2-4 MILS
 - TOPCOAT: TWO COATS CARBOLINE CARBOTHANE 8845, 3-5 MILS (COLOUR: FS 17925 WHITE)
 - UN-INSULATED AREAS ONLY
 51. INTERNAL SANDBLAST: SSPC-SP5
 52. INTERNAL LINING: TWO COATS DEVOE 253 OR PHENOLINE 353, 5-8 MILS
 - NO COATING ON STILLWELL INTERNALS AND EXTERNALS
 53. STENCIL: NIL
 54. PIPE FITTINGS AND ENCLOSURE TO BE INSTALLED BEFORE SPRAY FOAM
 55. MATERIALS:
 - INSULATION: UNDERSIDE OF SKID: 2" THK SPRAY FOAM INSULATION
 - TANK: 2" THK SPRAY FOAM INSULATION WITH LATEX POLYDYNE FIRE RESISTANT (COLOUR: WHITE)

ENCLOSURE INSULATION:

- DWG -601:
56. MATERIALS:
 - INSULATION: ENCLOSURE: 1-1/2" THK RIGID URETHANE c/w 0.024" THK STUCCO EMBOSSED ALUMINUM CLADDING
 - SCREWS: #8 x 1/2" LONG SELF TAPPING ROBERTSON HEAD 304SS
 57. INSULATION IS TO BE SECURED IN PLACE BY SELF TAPPING SCREWS ON 6" CENTERS
 58. NAMEPLATES, NOZZLES, FLANGES AND WEEP-HOLE NIPPLES SHALL NOT BE INSULATED

FINAL ASSEMBLY:

59. ALL OPENINGS TO BE COVERED PRIOR TO SHIPPING
60. PARTIAL BOLT-UP FOR SHIPPING WILL BE USED, 4 STUDS EVENLY PLACED IN THE FLANGE
61. S.L. = SHIP LOOSE
62. APPROXIMATE SHIPPING WEIGHT: 10,500 LBS
63. APPROXIMATE SHIPPING DIMENSIONS: 9'-8" W x 11'-2" H x 16'-10" LG



REV	DATE	DESCRIPTION	BY	ENG	PM	APP
0	10/01/2025	ISSUED FOR FABRICATION	DGN	JAM	LC	

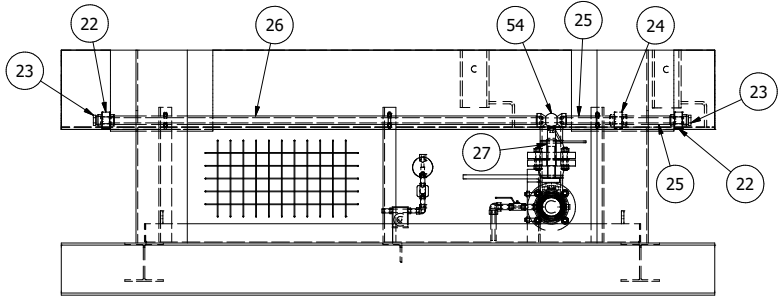
BILTON

Welding and Manufacturing Ltd.

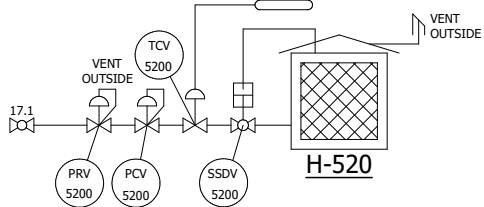
This drawing is property of BILTON WELDING AND MANUFACTURING LTD and is lent to the recipient for their confidential use only. In consideration of the loan of this drawing, the recipient promises and agrees that it shall not be used in any way detrimental to the interests of BILTON WELDING AND MANUFACTURING LTD, that it shall be returned upon request, and shall not be reproduced, copied, lent, or otherwise disposed of, directly or indirectly, without the written consent of BILTON WELDING AND MANUFACTURING LTD.

BOX 6106
5815 37 Street
INNISFAIL, AB
CANADA
403-227-7799
1-888-227-4923
FAX 227-7796

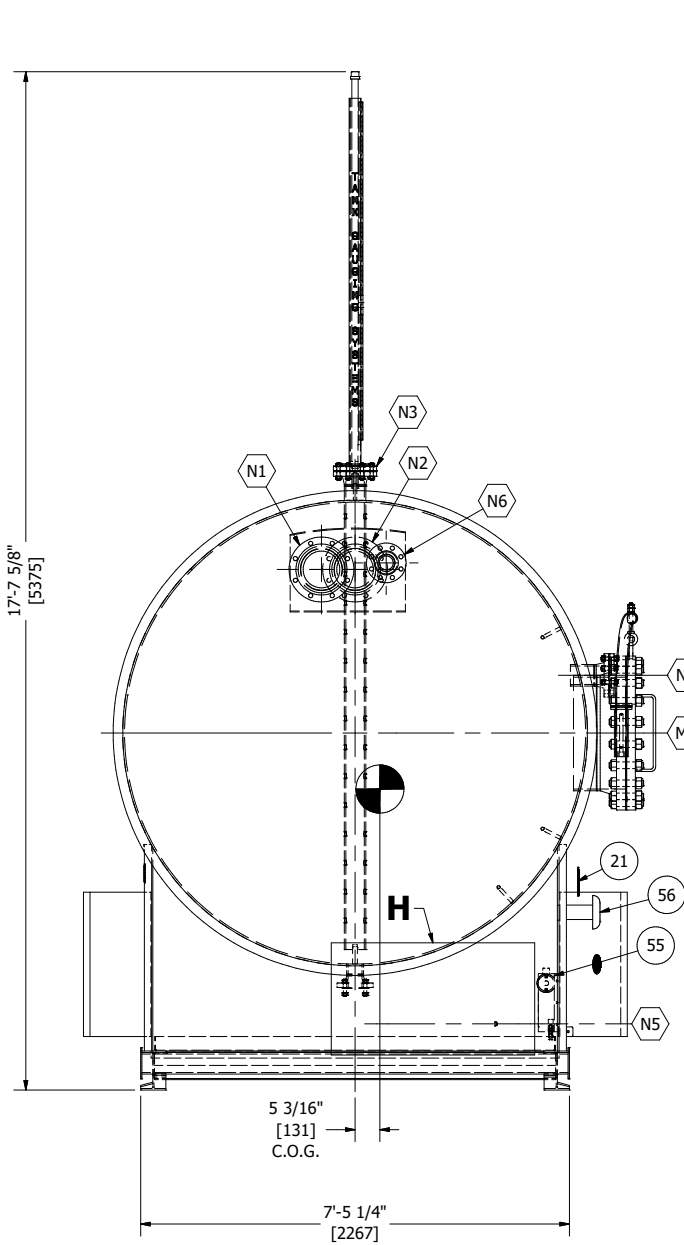
DESIGN SPECIFICATIONS			
DESIGN & FABRICATE TO: 2023 EDITION ASME BOILER & PRESSURE VESSEL CODE SECTION VIII, DIVISION 1			
DESIGN PRESSURE & TEMPERATURE: 50 PSIG @ 100°F (345 kPag @ 38°C)			
DESIGN EXTERNAL PRESSURE: N/A			
MINIMUM DESIGN METAL TEMP: -20°F @ 50 PSIG (-29°C @ 345 kPag)			
IMPACT TESTS: SEE NOTES 3~7			
RADIOGRAPHY: SEE NOTE 23			
POST WELD HEAT TREATMENT: SEE NOTE 25			
HYDROSTATIC TEST PRESSURE: 75 PSIG (517 kPag) PREHEAT: 50°F (10°C)			
CORROSION ALLOWANCE: 1/8" (3mm)		MAWP: 50 PSIG @ 100°F (345 kPag @ 38°C)	
HEAD THK. MIN.: 0.313" (7.95mm)		VOLUME: 640 FT³ (18.12 m³)	
WEIGHT EMPTY: 10,500 LBS (4,763 KG)		WEIGHT FULL: 41,500 LBS (18,824 KG)	
APPLIES TO DWGS: -201		SERIAL NUMBER: 19342	
PARAMOUNT RESOURCES LTD			
100 BBL SINGLE WALL FLARE KNOCKOUT DRUM - TAG#: TBD GENERAL NOTES - 96" ID x 10'-0" S/S			
QUOTE NUMBER: 14721B		SALE ORDER: 6840	
PURCHASE ORDER: P24-107501		JOB ORDER:	
LOCATION: 8-32-65-5-W6M		D7280	
DATE: 27/11/2024			
SHEET: 1 OF 7		DRAWING NO.:	
CRN DWG: BWM-361A-12 REV 5		D7280-100	
CRN NUMBER: V8688.2			
		SIZE	
		D	
		REV.	
		0	



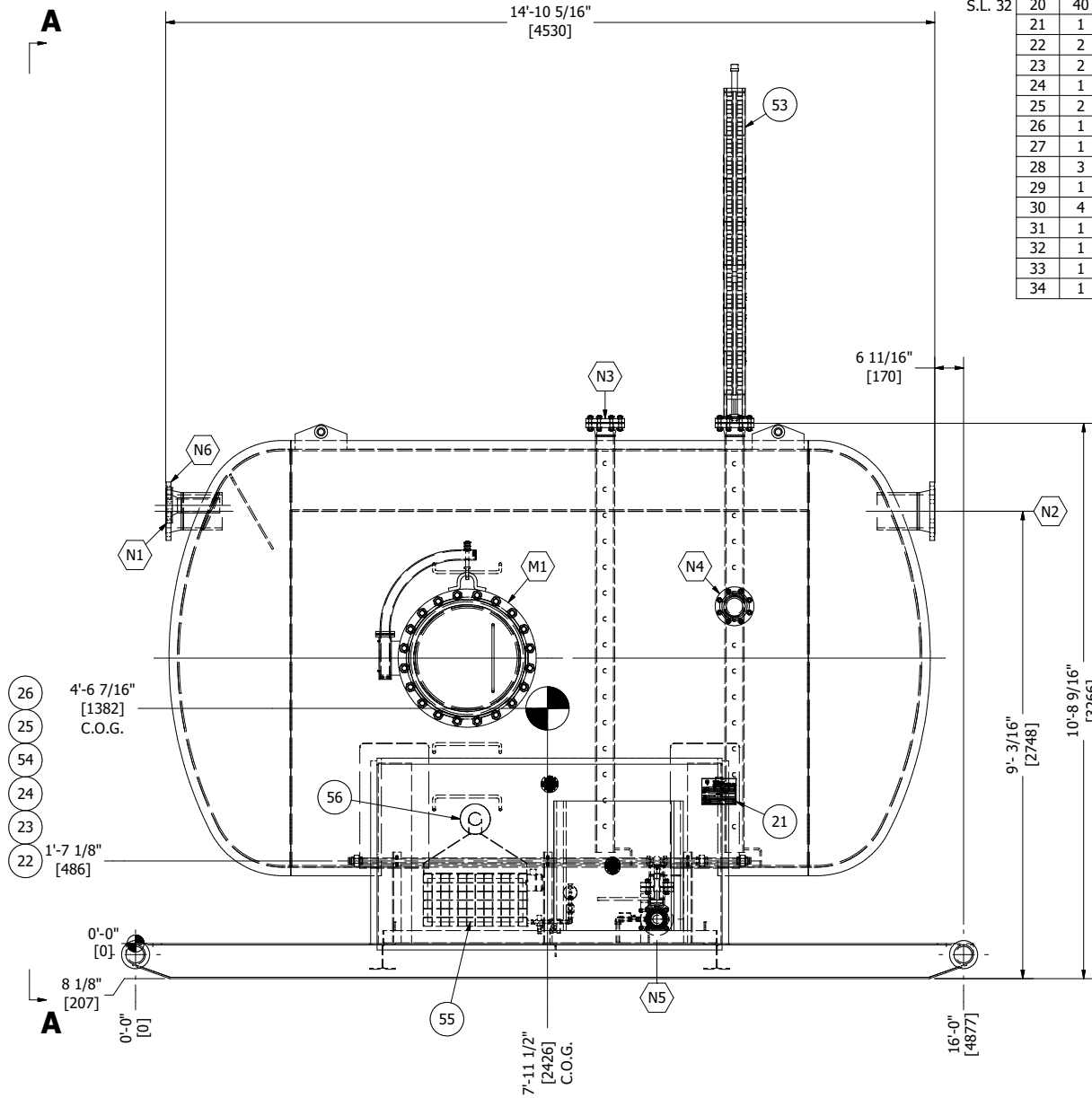
THREADED PIPING



HEATER P&ID



ORIENTATION VIEW A-A
TRUCKOUT SPOOL EXCLUDED



ELEVATION VIEW

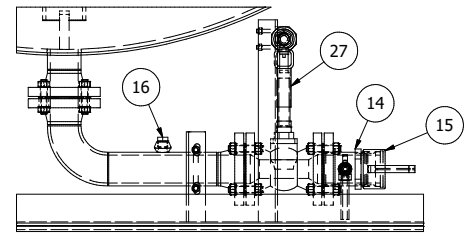
REV	DATE	DESCRIPTION	BY	ENG	PM	APP
0	10/01/2025	ISSUED FOR FABRICATION	DGN	JAM	LC	

BILL OF MATERIALS

ITEM	QTY	REF.	PART No.	DESCRIPTION	LENGTH	MATERIAL	WEIGHT (lbs)
1	1	VESSEL	-	VESSEL ASSEMBLY (SEE DRAWING D5847-201 FOR DETAILS)			8102.27
2	1	SKID	-	SKID ASSEMBLY (SEE DRAWING D5847-501 FOR DETAILS)			1355.63
3	1	ENCLOSURE	-	ENCLOSURE ASSEMBLY (SEE DRAWING D5847-601 FOR DETAILS)			200.02
4	2	N3,N4	1-000911	4" x CLASS 150 RF BLIND FLG		SA-105-N	31.09
S.L. 8	5	36	N3,N4,N5,N7	5/8 DIA x 3 1/2 LG STUD		SA-193-B7M	11.22
S.L. 16	6	72	N3,N4,N5,N7	5/8 DIA HEX NUT		SA-194-2HM	9.36
S.L. 1	7	3	N3,N4,N7	4" x CLASS 150 RF "CG" GRAPHITE FILLED GASKET		316L	1.91
	8	3	N5	3 x CLASS 150 RF CG GRAPHITE FILLED GASKET		316L	1.11
	9	1	N5	3" x CLASS 150 RFTO FLG		SA-105-N	9.60
	10	1	N5	TRUCK OUT NIPPLE ASSEMBLY (3" x 4" x 1/2")			3.52
	11	1	N5	1/2" PIPE SCH 160 (TBE)	4 7/16"	SA-106-B	0.48
	12	2	N5	1/2" NIPPLE SCH 160 x 2" LG		SA-106-B	0.43
	13	1	N5	1/2" x CL2000 90° THRD ELBOW		SA-105-N	0.42
	14	1	N5	3" MALE CAMLOCK x FNPT		ALUM	0.67
	15	1	N5	3" CAMLOCK DUST CAP		ALUM	1.04
	16	1	N5	3/4" NPT HEX HEAD PLUG		SA-105-N	0.26
S.L.	17	1	N7	4" x CLASS 150 RF BLIND FLG TAPPED TO 1" NPT		SA-105-N	16.28
S.L. 16	18	1	M1	24 x CLASS 150 RF CG GRAPHITE FILLED GASKET		316L	5.37
S.L. 32	19	20	M1	1 1/4 DIA x 7 LG STUD		SA-193-B7M	49.86
	20	40	M1	1 1/4 DIA HEX NUT		SA-194-2HM	35.12
	21	1	NAMEPLATE	6" x 8" NAMEPLATE		304SS	0.50
	22	2	THRD PIPING	1" x CL3000 THRD UNION		SA-105-N	4.10
	23	2	THRD PIPING	1" NPT HEX HEAD PLUG		SA-105-N	0.93
	24	1	THRD PIPING	1" x CL3000 THRD ORIFICE UNION		SA-105-N	2.05
	25	2	THRD PIPING	1" PIPE SCH 160 (TBE)	7 3/4"	SA-106-B	3.68
	26	1	THRD PIPING	1" PIPE SCH 160 (TBE)	5'-6 15/16"	SA-106-B	15.91
	27	1	THRD PIPING	MECHANICAL LINK ASSEMBLY			1.79
	28	3	THRD PIPING	1" U-BOLT c/w NUTS		MILD STEEL	0.87
	29	1	THRD PIPING	3" U-BOLT c/w NUTS		MILD STEEL	0.88
	30	4	HEATER	3/8" NIPPLE SCH XH/80 x 1 1/2" LG		SA-106-B	0.36
	31	1	HEATER	3/8 x CL2000 90° THRD ELBOW		SA-105-N	0.22
	32	1	HEATER	CHARGING CLAMP, 50 AMP, RED - GROTE 84-5002		-	0.00
	33	1	HEATER	CHARGING CLAMP, 50 AMP, BLACK - GROTE 84-5003		-	0.00
	34	1	HEATER	CATADYNE STARTER CABLE CORD WRAP ASSEMBLY		-	0.00
							10028.24

SPECIALTY ITEM LIST

ITEM	QTY	REF.	PART No.	DESCRIPTION	TAG #
51	1	N5	1-008280	3" x CLASS 150 RF FP BALL VALVE	
52	1	N5	1-027112	1/2" x CL3000 THRD FP BALL VALVE	
S.L.	53	1	N7	TGS-5020 SEALED LEVEL GAUGE SOUR	
	54	1	THRD PIPING	1" x CLASS 3000 THD RP BALL VALVE	
	55	1	HEATER	12" x 24" CATADYNE MKII HEATER - 12V, NATURAL GAS	H-520
	56	1	HEATER	24" VENT HOOD	
	57	1	HEATER	3/8" NPT SAFETY SHUT OFF VALVE (INCLUDED w/ HEATER)	SSDV-5200
	58	1	HEATER	3/8" NPT MAXITROL RV-20 APPLIANCE REGULATOR (INCLUDED w/ HEATER)	PCV-5200
	59	1	HEATER	1/4" NPT x 3/8" NPT FISHER 912 REGULATOR	PRV-5200
	60	1	HEATER	12" x 24" SNAP ON CATADYNE HEATER GRILL (1 x 12" x 24" GRILL)	
	61	1	HEATER	3/8" NPT HEATER THERMOSTAT 4000 BTU (NG)	TCV-5200



DETAIL H

*** TRUCKOUT SPOOL IS TOWARDS MANWAY SIDE***

AS-BUILT
BILTON

DATE: 2025/04/24

TC
INITIALS

BILTON
Welding and Manufacturing Ltd.

This drawing is property of BILTON WELDING AND MANUFACTURING LTD and is lent to the recipient for their confidential use only. In consideration of the loan of this drawing, the recipient promises and agrees that it shall not be used in any way detrimental to the interests of BILTON WELDING AND MANUFACTURING LTD, that it shall be returned upon request, and shall not be reproduced, copied, lent, or otherwise disposed of, directly or indirectly, without the written consent of BILTON WELDING AND MANUFACTURING LTD.

BOX 6106
5815 37 Street
INNISFAIL, AB
CANADA
403-227-7799
1-888-227-4923
FAX 227-7796

PARAMOUNT RESOURCES LTD

100 BBL SINGLE WALL FLARE KNOCKOUT DRUM - TAG#: TBD
FINAL ASSEMBLY

QUOTE NUMBER: 14721B
PURCHASE ORDER: P24-107501
LOCATION: 8-32-65-5-W6M
DATE: 27/11/2024
SHEET: 2 OF 7

SALE ORDER: 6840

JOB ORDER:

D7280

SIZE

D

DRAWING NO.:

D7280-101

REV.

0