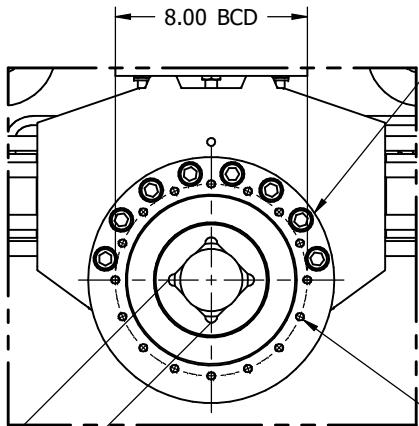
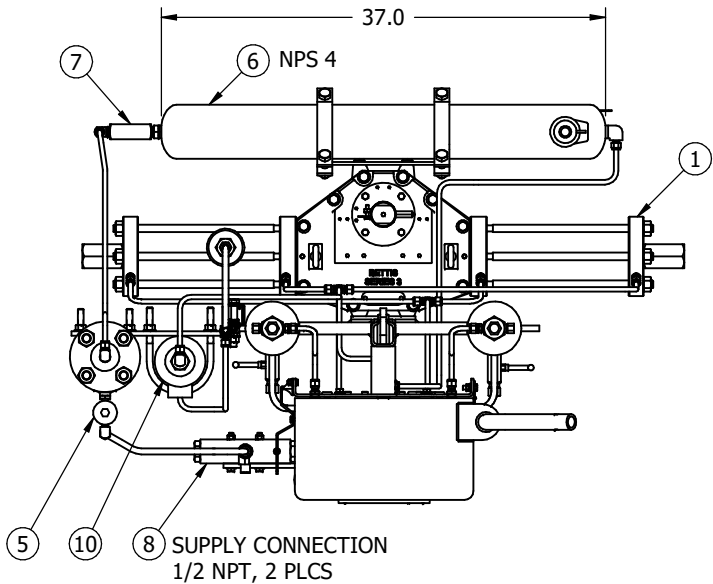


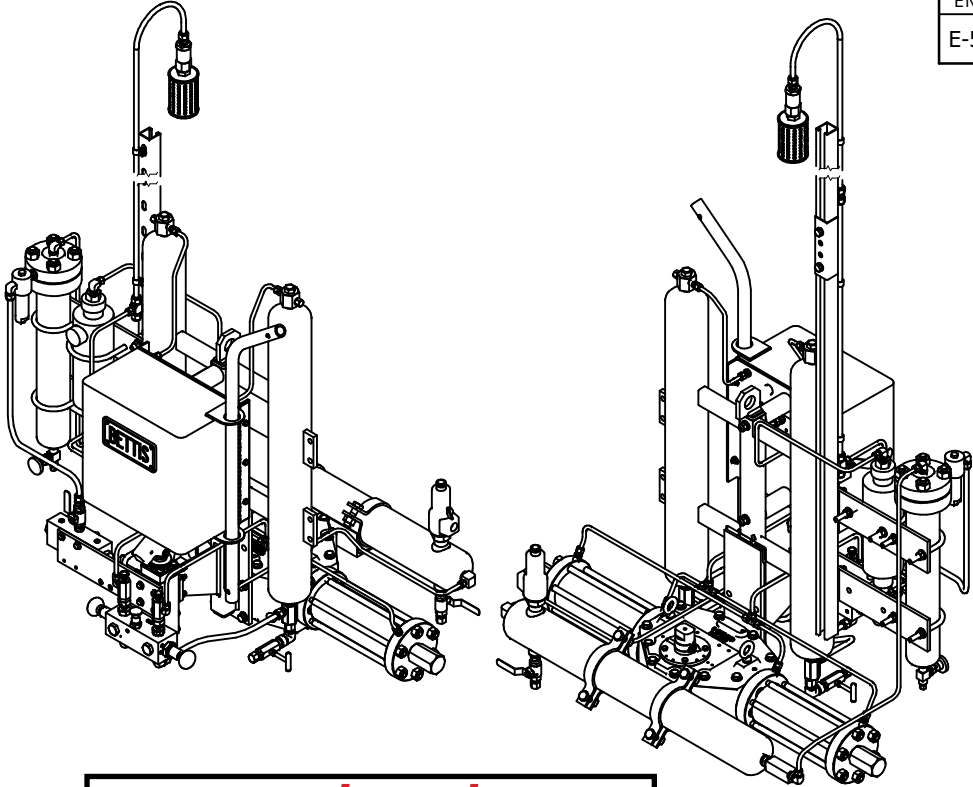
ENG. REF. #	REVISIONS		
	REV	S.O.-ITEM	DATE
E-59902257	00	1208665.2-A	Jun-04-21
ITEM #	DESCRIPTION		
1	OPERATOR		
2	GAS/HYDRAULIC TANK		
3	CONTROL PANEL		
4	HANDPUMP		
5	SUPPLY FILTER		
6	VOLUME TANK		
7	CHECK VALVE		
8	HIGH PRESSURE SELECTOR		
9	DEHYDRATOR		
10	MIST ELIMINATOR		
11	MUFFLER		
12	ISOLATION VALVE		



YOKE BORE & VALVE ADAPTATION PLATE, TO MATCH CAMERON T31 BALL VALVE TOPWORK #BX-1220-3 SIZE 10" x 600

3/8 - 16UNC THRU 16 PLCS EQ SP ON SPEC'D BCD ON CL

VALVE ADAPTATION DETAILS
1:8



ENEngineering
A ☐ REVIEWED
B ☒ REVIEWED W/ COMMENTS
OTHER
REVIEWED TO ASSIST THE VENDOR BUT WITHOUT RELIEVING THEM BY ANY WAY OF THE RESPONSIBILITIES CONTAINED IN THE PURCHASE DOCUMENTS, SPECIFICATIONS, OR STANDARDS.
BY Jeffrey Perry DATE 06/18/2021
C ☐ REVIEWED MUST RESUBMIT
D ☐

CUSTOMER : ANR PIPELINE CO
S.O.-ITEM : 1208665.2 QTY. : 2
P.O.# : 4500393922
TAG # : ~~ROY-181, ROY-182~~ FV-181, FV-182

- MATCHING VALVE NPS 10 ANSI 600 CAMERON T32 BALL VALVE, ABOVE GROUND, STEM VERT, LINE HZTL

REV 0 BY: PVD-2021-06-04

NOTE:
- ACCESSORY, TANKS AND TUBING SHOWN FOR REFERENCE ONLY
- VALVE ADAPTATION PLATE IS SHOWN IN DETAIL VIEW ONLY

UNLESS OTHERWISE SPECIFIED
DIMENSIONS ARE IN INCHES [MM]
TOLERANCES :
XXX ± 0.5 [10]
XX ± 0.2 [5]
X ± 0.1 [2]

EMERSON

THIRD ANGLE PROJECTION

APPROX. WEIGHT
N/A

DIMENSIONAL DRAWING
FOR 43DH OPERATOR
FOR VERTICAL STEM MOUNT

DRN PVD CHK CD APR SSS DATE May-24-21
SCALE 1:16 DWG. NO. VA-ED-009-4732 REV 00 SHEET 1 OF 1

