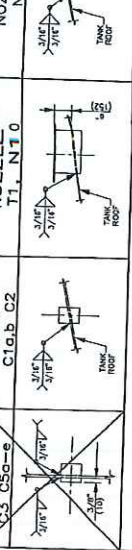


**GENERAL NOTES**

DESIGN CODE: CAN. CODE OF PRACTICE FOR STEEL STRUCTURES, CEC 2003  
 DESIGN STANDARD: CAN. CODE OF PRACTICE FOR STEEL STRUCTURES, CEC 2003  
 DESIGN MATERIAL: A572/GR 50  
 JOINT EFFICIENCY: 1.00  
 CORROSION ALLOWANCE: NONE  
 WIND SPEED: 120 MPH (119 MPH NOMINAL)  
 SERVICE: WATER, OIL, GAS  
 STORAGE: WATER, OIL, GAS  
 EXPOSURE: NORMAL (S1-S11, S12)  
 WIND EXPOSURE: 1.00  
 OVERALL HEIGHT: 117'-0" (35.71m)  
 DIAMETER: 117'-0" (35.71m)

**APPURTENANCE & ATTACHMENT WELD DETAILS (NTS)**



**PAINTING AND INSULATION**

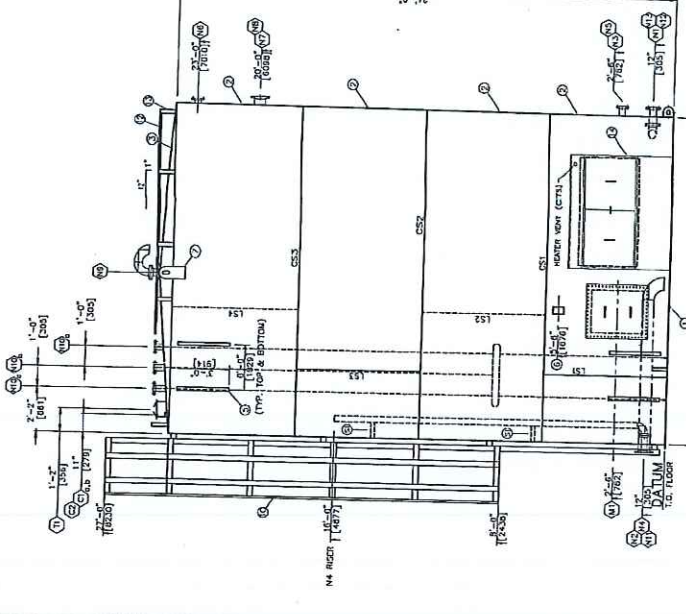
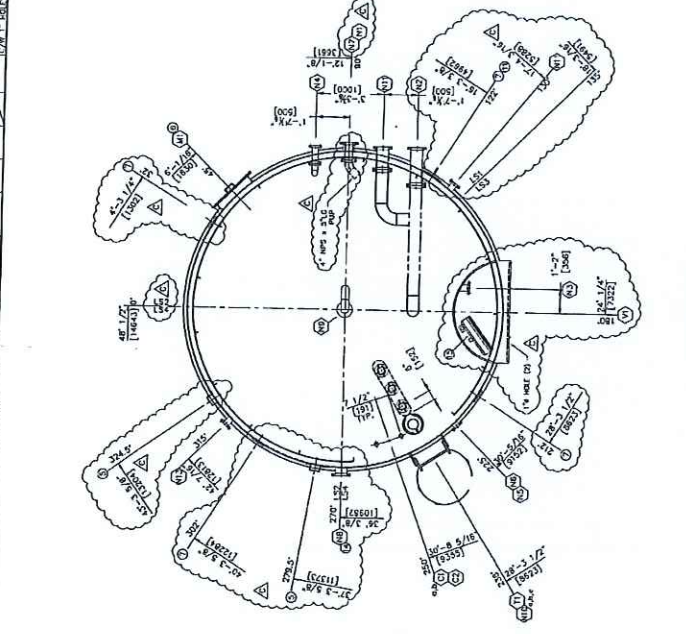
INTERIOR FINISH: ENDOUR 253  
 EXTERIOR FINISH: ENDOUR 253  
 EXTERIOR INSULATION: 1.5\"/>

**NOZZLE SCHEDULE**

MK#	QTY	SIZE	SCH	RATE	TYPE	DESCRIPTION
N1	1	12\"/>				
N2	1	12\"/>				
N3	1	12\"/>				
N4	1	12\"/>				
N5	1	12\"/>				
N6	1	12\"/>				
N7	1	12\"/>				
N8	1	12\"/>				
N9	1	12\"/>				
N10	1	12\"/>				
N11	1	12\"/>				
N12	1	12\"/>				
N13	1	12\"/>				
N14	1	12\"/>				
N15	1	12\"/>				
N16	1	12\"/>				
N17	1	12\"/>				
N18	1	12\"/>				
N19	1	12\"/>				
N20	1	12\"/>				
N21	1	12\"/>				
N22	1	12\"/>				
N23	1	12\"/>				
N24	1	12\"/>				
N25	1	12\"/>				
N26	1	12\"/>				
N27	1	12\"/>				
N28	1	12\"/>				
N29	1	12\"/>				
N30	1	12\"/>				
N31	1	12\"/>				
N32	1	12\"/>				
N33	1	12\"/>				
N34	1	12\"/>				
N35	1	12\"/>				
N36	1	12\"/>				
N37	1	12\"/>				
N38	1	12\"/>				
N39	1	12\"/>				
N40	1	12\"/>				
N41	1	12\"/>				
N42	1	12\"/>				
N43	1	12\"/>				
N44	1	12\"/>				
N45	1	12\"/>				
N46	1	12\"/>				
N47	1	12\"/>				
N48	1	12\"/>				
N49	1	12\"/>				
N50	1	12\"/>				
N51	1	12\"/>				
N52	1	12\"/>				
N53	1	12\"/>				
N54	1	12\"/>				
N55	1	12\"/>				
N56	1	12\"/>				
N57	1	12\"/>				
N58	1	12\"/>				
N59	1	12\"/>				
N60	1	12\"/>				
N61	1	12\"/>				
N62	1	12\"/>				
N63	1	12\"/>				
N64	1	12\"/>				
N65	1	12\"/>				
N66	1	12\"/>				
N67	1	12\"/>				
N68	1	12\"/>				
N69	1	12\"/>				
N70	1	12\"/>				
N71	1	12\"/>				
N72	1	12\"/>				
N73	1	12\"/>				
N74	1	12\"/>				
N75	1	12\"/>				
N76	1	12\"/>				
N77	1	12\"/>				
N78	1	12\"/>				
N79	1	12\"/>				
N80	1	12\"/>				
N81	1	12\"/>				
N82	1	12\"/>				
N83	1	12\"/>				
N84	1	12\"/>				
N85	1	12\"/>				
N86	1	12\"/>				
N87	1	12\"/>				
N88	1	12\"/>				
N89	1	12\"/>				
N90	1	12\"/>				
N91	1	12\"/>				
N92	1	12\"/>				
N93	1	12\"/>				
N94	1	12\"/>				
N95	1	12\"/>				
N96	1	12\"/>				
N97	1	12\"/>				
N98	1	12\"/>				
N99	1	12\"/>				
N100	1	12\"/>				

**MATERIAL LIST**

MK#	QTY	DESCRIPTION	MATERIAL	WT
1	1	FLOOR PLATE - 13'-0\"/>		
2	1	SHELL PLATE - 48'-0\"/>		
3	1	MANWAY 24\"/>		
4	1	WALKING PASS		
5	1	WALKING PASS		
6	1	WALKING PASS		
7	1	WALKING PASS		
8	1	WALKING PASS		
9	1	WALKING PASS		
10	1	WALKING PASS		
11	1	WALKING PASS		
12	1	WALKING PASS		
13	1	WALKING PASS		
14	1	WALKING PASS		
15	1	WALKING PASS		
16	1	WALKING PASS		
17	1	WALKING PASS		
18	1	WALKING PASS		
19	1	WALKING PASS		
20	1	WALKING PASS		
21	1	WALKING PASS		
22	1	WALKING PASS		
23	1	WALKING PASS		
24	1	WALKING PASS		
25	1	WALKING PASS		
26	1	WALKING PASS		
27	1	WALKING PASS		
28	1	WALKING PASS		
29	1	WALKING PASS		
30	1	WALKING PASS		
31	1	WALKING PASS		
32	1	WALKING PASS		
33	1	WALKING PASS		
34	1	WALKING PASS		
35	1	WALKING PASS		
36	1	WALKING PASS		
37	1	WALKING PASS		
38	1	WALKING PASS		
39	1	WALKING PASS		
40	1	WALKING PASS		
41	1	WALKING PASS		
42	1	WALKING PASS		
43	1	WALKING PASS		
44	1	WALKING PASS		
45	1	WALKING PASS		
46	1	WALKING PASS		
47	1	WALKING PASS		
48	1	WALKING PASS		
49	1	WALKING PASS		
50	1	WALKING PASS		
51	1	WALKING PASS		



**ELEVATION VIEW**  
(NOT TRUE ORIENTATION)

PLATINUM DOES NOT BEAR RESPONSIBILITY ON THESE UNLESS APPROVED AS NOTED AND SHOWN.

APPROVED FOR CONSTRUCTION

ISSUE FOR CONSTRUCTION AS NOTED

REVISION AND RECOUNT FOR APPROVAL

DATE: \_\_\_\_\_

SIGNATURE: \_\_\_\_\_

**ORIENTATION**  
(TRUE ORIENTATION)

**TANK WELD DETAILS (NTS)**

SHELL JOINT - VERTICAL

SHELL JOINT - HORIZONTAL

SHELL TO FLOOR

SHELL TO ROOF

FLOOR JOINT

ROOF JOINT

**NOTES**

- ALL LANGE BRIMS TO BE WELD BUILT UP TO 1/2\"/>
- FLANGE AND BOLT HOLES TO STRONG CENTER LINES (SCL)
- ALL WELDS TO BE WELD BUILT UP TO 1/2\"/>
- ALL WELDS TO BE WELD BUILT UP TO 1/2\"/>
- ALL WELDS TO BE WELD BUILT UP TO 1/2\"/>
- ALL WELDS TO BE WELD BUILT UP TO 1/2\"/>
- ALL WELDS TO BE WELD BUILT UP TO 1/2\"/>

**750 Bbl SINGLE WALL TANK**  
 750 Bbl (119 CuM) WATER SKIN TANK (7-420)  
 15'-3\"/>

CANADIAN ARMAAS PETROLEUM ULC C/O WESTVIEW ENG. (SEE NO. 19474)  
 DRAWING NO. 19474-475-TK-01

**PLATINUM Energy Services Corp.**

1400 SHEPPARD AVENUE EAST, SUITE 200, SCARBOROUGH, ONTARIO M1S 1W6  
 TEL: (416) 291-1111 FAX: (416) 291-1112

DATE: 11-02-20  
 BY: [Signature] CHECKED: [Signature] APPROVED: [Signature]

PROJECT: 19474-475-TK-01