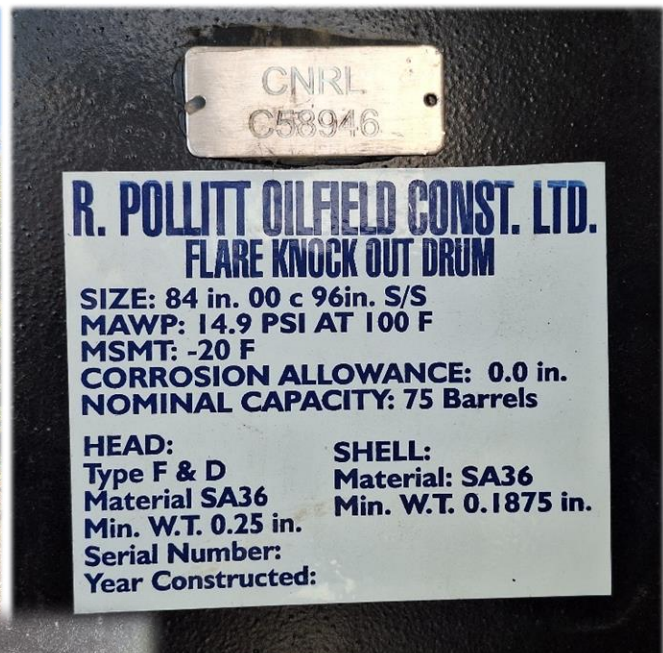


Client: Fuelled	Facility: CNRL Bilbo Field	Date: Sept. 8, 2025
LSD: 07-19-65-07W6M (CNRL)	Equipment Inspected: Flare Knockout Drum SN-K637	LII Job #: 14130


Job Scope: To perform external and internal informational visual inspections with Ultrasonic Testing (UT) on a horizontal Flare Knockout Drum, SN-K637. This FKOD is out of service and currently located at the CNRL 07-19-065-07W6M Bilbo location.

SN-K637 FKOD Skid Overview and Vessel Data Pate



Informational Results Summary:

- **VE:** An informational external visual inspection was performed on all accessible external components. There were no external concerns identified during inspection. See the attached pages of this report for more detailed results and inspection photos.
- **VI:** An informational internal visual inspection was performed from the opened manway. There was limited visual access to the bottom portion of the vessel due to residual product in the vessel. There were no visible internal concerns identified during inspection. See the attached pages of this report for more detailed results and inspection photos.
- **UT:** A UT baseline survey was conducted on the vessel shell, heads, and nozzles. Thinning in the knuckles of both heads was noted. Likely from the manufacturing process of the heads as there was no damage detected with UT. See Lance Inspections UTS report (**UT_SN-K637_sep2025**) for CML locations and thickness results.

Technician: Dave Ellis (API 510 #118975) (CGSB UT-2, MT-2, PT-2 #21762) (SNT-TC-1A UT-II, MT-II, PT-II)	
Client Representative: Will Van Weelden (Fuelled)	



Visual Inspection Information – Flare Knockout Drum (SN-K637)

Note: This vessel was out of service at the time of inspection.

- **Nameplate:** Firmly fastened and legible. Vessel serial number is welded into the manway cover.
- **Foundation/Support:** This vessel is supported by three bottom saddle supports anchor bolted to the skid floor. No visible signs of damage.
- **External Surface:** This vessel is carbon steel, painted, and uninsulated. Some paint deterioration with minor surface corrosion was noted on the bottom of the vessel.
- **Insulation:** This vessel is uninsulated and inside of a utilidor building. The building appears well sealed with no visible signs of damage.
- **Ladder/Platform:** There is no ladder or platform associated with this vessel.
- **External Piping:** All visible external piping is uninsulated and painted. All piping appears to be properly supported with no visible signs of damage.
- **Nozzles:** All nozzles have a flange rating of 150#. No visible signs of damage or deflection.
- **Manway:** This vessel has an 18" manway with no notable external deficiencies.
- **Overpressure Protection:** This FKOD has no attached PSV. The 4" and 6" outlets are vented to atmosphere.
- **External Components:** This FKOD has two Catadyne heaters and one sight glass installed. All visible external components appear to be in good condition. This FKOD has a steel dike for secondary containment with no deficiencies observed.
- **Internal Components:** Visually inspected from the manway. This FKOD is internally coated with residual product in the bottom of the vessel. No visual access to the 4 to 7 o'clock position of the vessel internals. No concerns observed in the visible internals of this FKOD.

Visual Inspection Photos (External) – Flare Knockout Drum (SN-K637)

Vessel Overviews

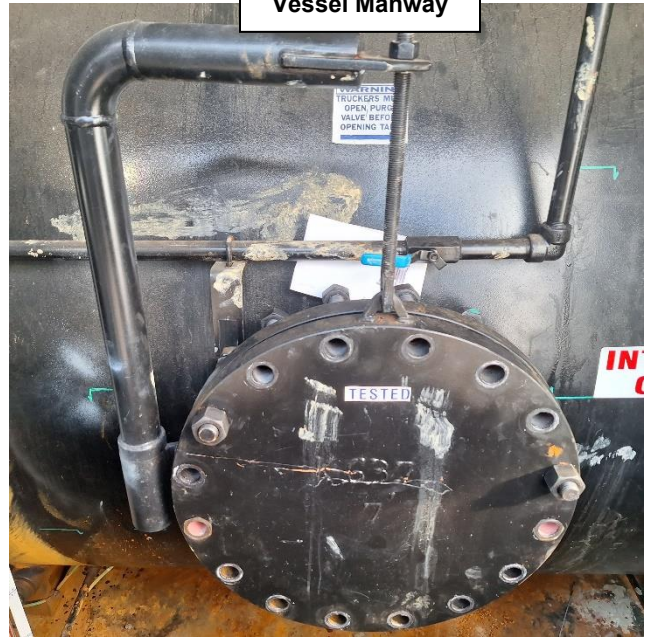


Visual Inspection Photos (External) – Flare Knockout Drum (SN-K637)

Vessel Support



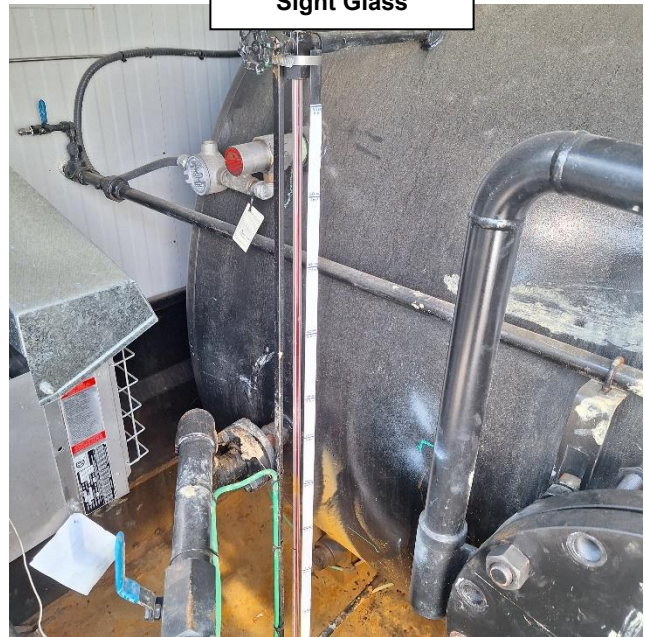
Vessel Manway



External Piping



Sight Glass



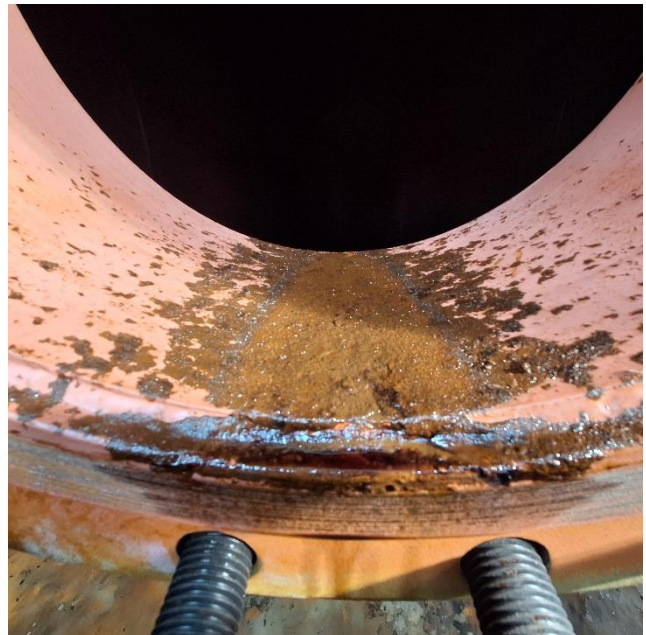
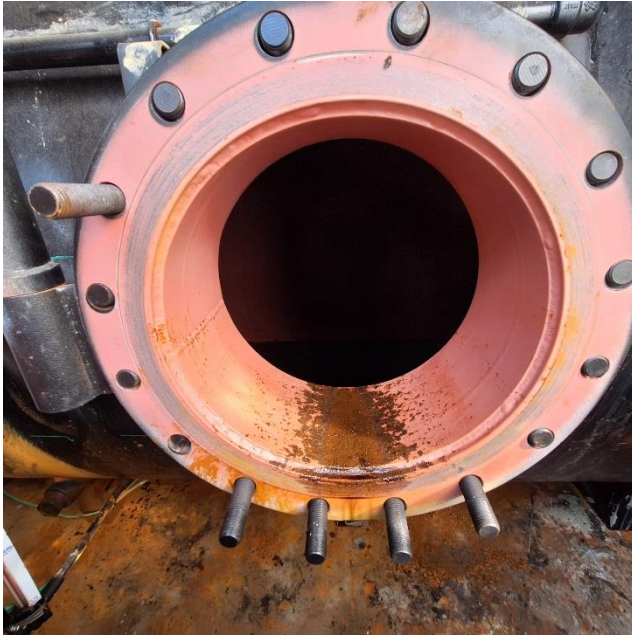
123 - 8805 Resources Road
Grande Prairie, AB
T8V 3A6
phone: 780-933-9700
lsmith@lanceinspections.com



**Informational Visual Inspection
Report**
**Informational Visual Inspection_
FKOD SN-K637_sep2025**

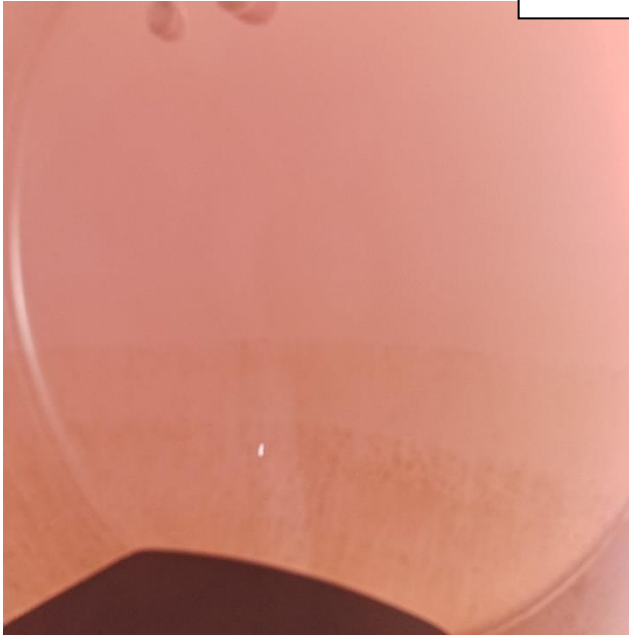
Page 5 of 10

Visual Inspection Photos (Manway) – Flare Knockout Drum (SN-K637)

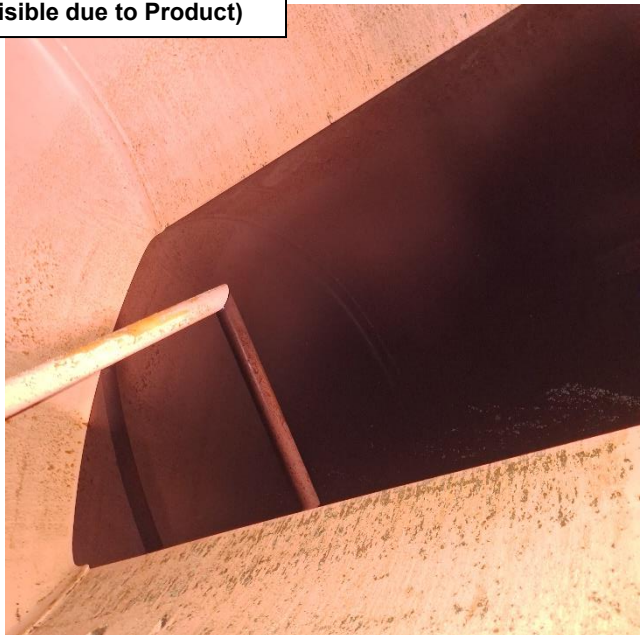
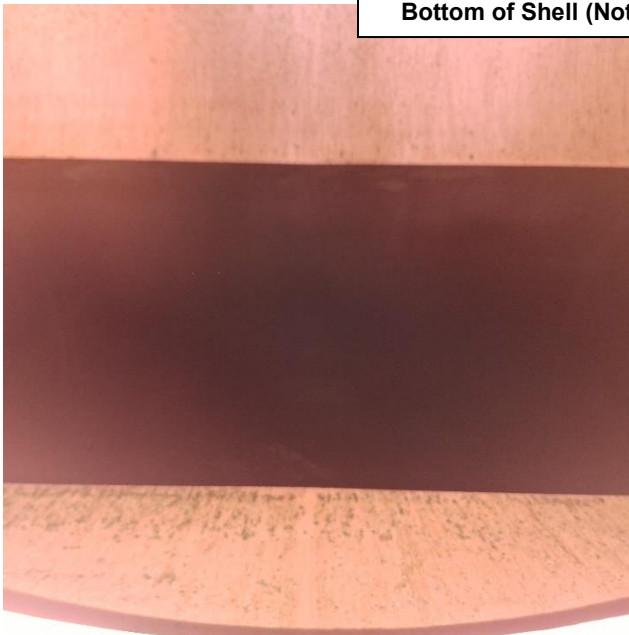


Visual Inspection Photos (Internals from Manway) – Flare Knockout Drum (SN-K637)

Vessel Heads



Bottom of Shell (Not Visible due to Product)



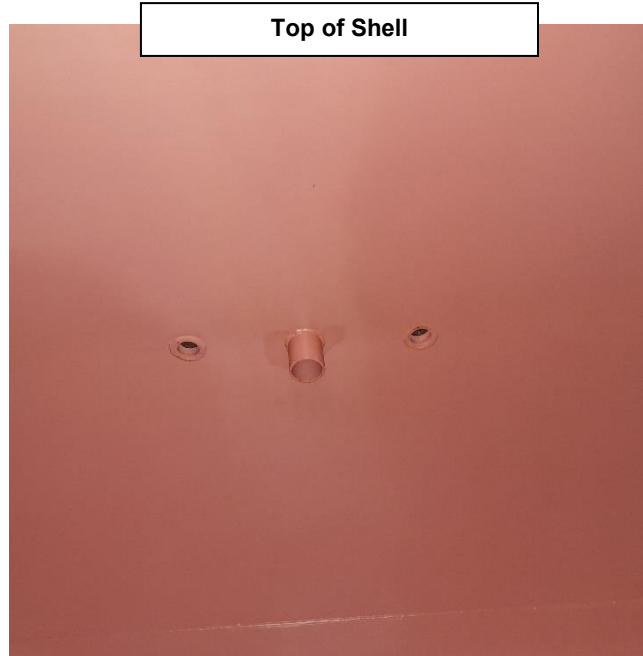
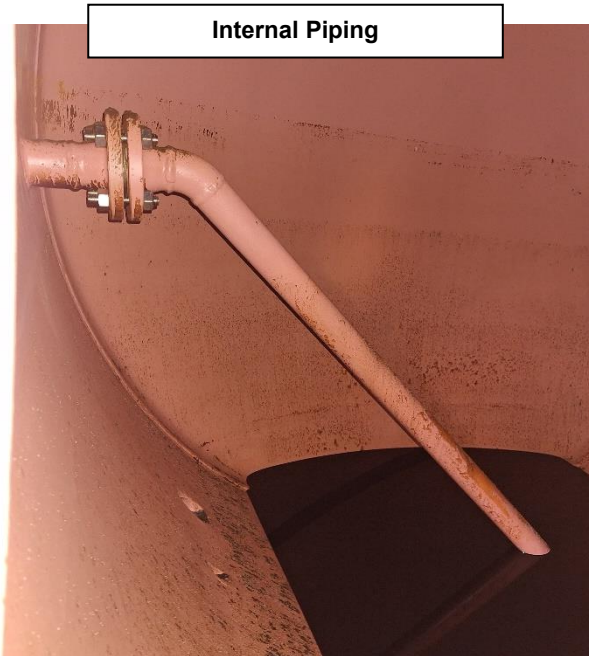
123 - 8805 Resources Road
Grande Prairie, AB
T8V 3A6
phone: 780-933-9700
lsmith@lanceinspections.com



**Informational Visual Inspection
Report**
*Informational Visual Inspection_
FKOD SN-K637_sep2025*

Page 7 of 10

Visual Inspection Photos (Internals from Manway) – Flare Knockout Drum (SN-K637)



Visual Inspection Photos (Site/Building/Dimensions) – Flare Knockout Drum (SN-K637)

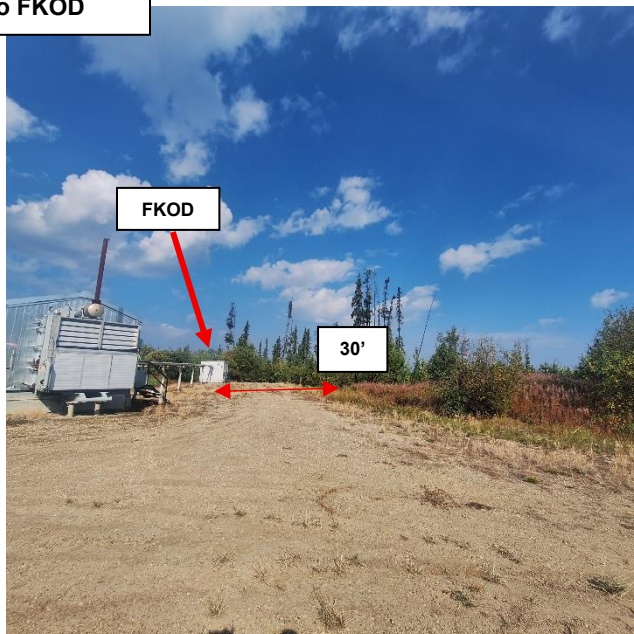
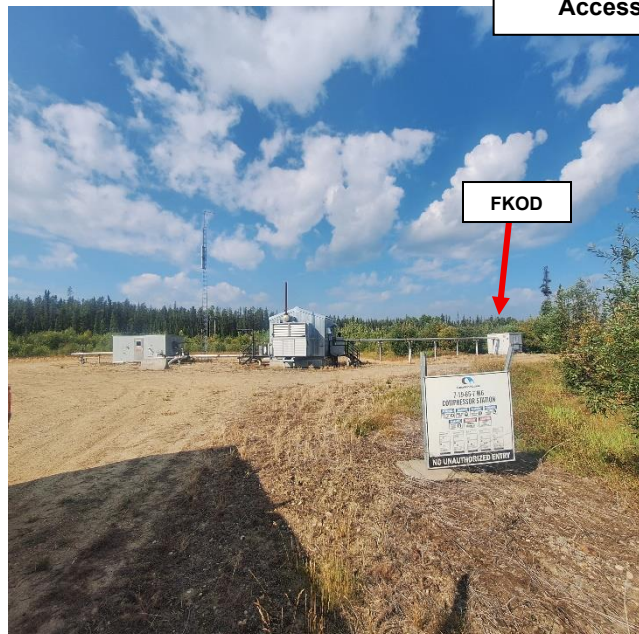
Lease Sign (Current Location)



Access Road into Site



Access to FKOD



Visual Inspection Photos (Site/Building/Dimensions) – Flare Knockout Drum (SN-K637)



Visual Inspection Photos (Site/Building/Dimensions) – Flare Knockout Drum (SN-K637)

