

Client: Fuelled	Facility: CNRL Wapiti Field	Date: August 22, 2025
LSD: 06-03-69-06W6M (CNRL)	Equipment Inspected: Flare Knockout Drum SN 10154B	LII Job #: 13752

Job Scope: To perform external/internal informational visual inspections, and Ultrasonic Testing (UT) on a horizontal Flare Knockout Drum (FKOD), Serial Number (SN) 10154B. This FKOD is out of service and currently located at the CNRL 06-03-069-06W6M Wapiti location.

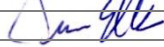
FKOD Skid Overview and Vessel Data Plate



Informational Results Summary:

- **VE:** An informational external visual inspection was performed on all accessible external components. There were no external concerns identified during inspection. See the attached pages of this report for more detailed results and inspection photos.
- **VI:** An informational internal visual inspection was performed from the opened manway. There was limited visual access to the bottom portion of the vessel due to residual product buildup. Coating damage was observed in the inlet and outlet nozzles. See the attached pages of this report for more detailed results and inspection photos.
- **UT:** A UT baseline survey was conducted on the vessel shell, heads, nozzles and external piping. Reflectors resembling small diameter pitting corrosion were detected in the bottom portion of the vessel and heads. The internal coating appears to be intact, leading to the conclusion that there may have been existing damage prior to coating the vessel. The minimum remaining wall thickness (MRWT) found in the shell was 8.0mm, and the MRWT found in the head was 7.7mm. This vessel has no stated corrosion allowance. See Lance Inspections UTS report (**UT_SN 10154B_aug2025**) for CML locations and thickness results.

This vessel was not in operation and removed from service at the time of inspection. As no areas of concern were found during the external inspection or the limited internal inspection (from the manway only), this vessel appears to be fit for service.

Technician: Dave Ellis (API 510 #118975) (CGSB UT-2, MT-2, PT-2 #21762) (SNT-TC-1A UT-II, MT-II, PT-II)	
Assistant: Karsyn Utz	
Client Representative: Will Van Weelden (Fuelled)	



Visual Inspection Information – Flare Knockout Drum (SN 10154B)

Note: This vessel was out of service at the time of inspection.

- **Nameplate:** Firmly fastened and legible.
- **Foundation/Support:** This vessel is supported by two saddle supports welded to the skid floor. There is a steel dyke inside the building for secondary containment. No visible signs of damage.
- **External Surface:** This vessel is carbon steel, painted, and uninsulated. No visible signs of damage.
- **Insulation:** This vessel is uninsulated and inside a utilidor building. The building appears to be well sealed with no visible signs of damage.
- **Ladder/Platform:** No ladders or platforms.
- **External Piping:** All visible external piping is uninsulated and painted. All piping appears to be properly supported with no visible signs of damage.
- **Nozzles:** No visible signs of damage or deflection. The internal coating on the 6" inlet and outlet nozzle is damaged.
- **Manway:** This vessel has a 24" internally coated manway on the top of the vessel. The existing rubber gasket has deteriorated and should be replaced.
- **Overpressure Protection:** There was one 1" MT x 1" FT PSV associated with this vessel. This PSV was not installed at the time of inspection. The set pressure is at or below the vessel MAWP of 14.9 PSI. The last known service date is August 04, 2017 by Apex Valve Services.
- **External Components:** This FKOD has one Catadyne heater and one level column with a sight glass and a high level shut down switch installed. All components appear to be intact.
- **Internal Components:** Inspected from the manway at the top of the vessel with a light and camera. This vessel is internally coated with no visible sign of coating damage in the shells of heads. There was limited visual access to the 6:00 portion of the vessel due to product residual. Coating damage was observed in the inlet and outlet nozzles, with corrosion identified during UT.

See the following pages of this report for inspection photos.

Visual Inspection Photos (External) – Flare Knockout Drum (SN 10154B)

Vessel Overviews



Visual Inspection Photos (External) – Flare Knockout Drum (SN 10154B)

Vessel Support



Secondary Containment



External Piping



Level Column/Sight Glass



Visual Inspection Photos (External) – Flare Knockout Drum (SN 10154B)

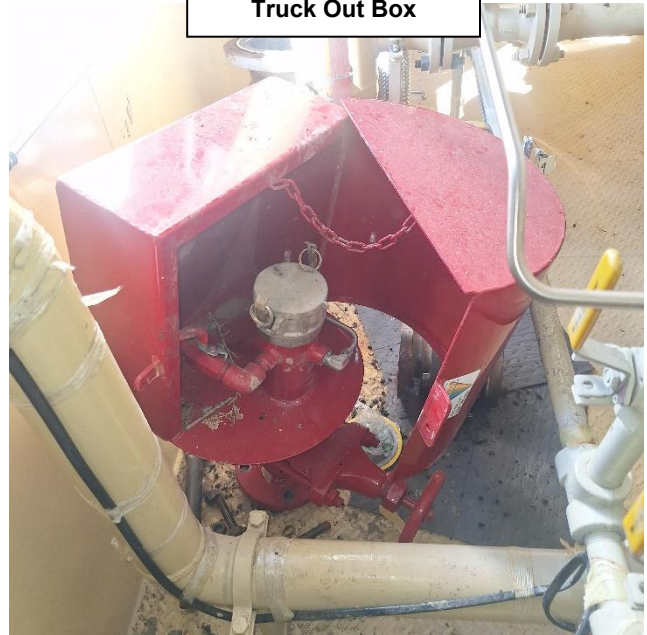
24" Manway



Catadyne Heater



Truck Out Box

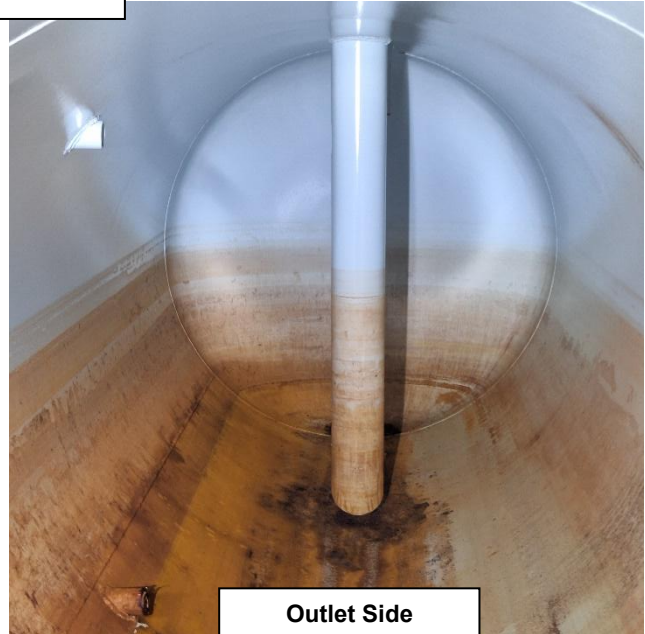


Visual Inspection Photos (Internals from Manway) – Flare Knockout Drum (SN 10154B)

Vessel Heads

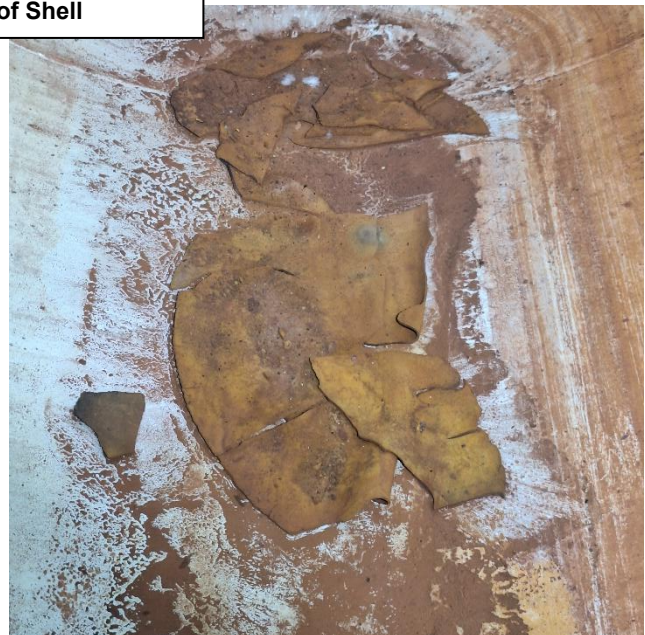


Inlet Side



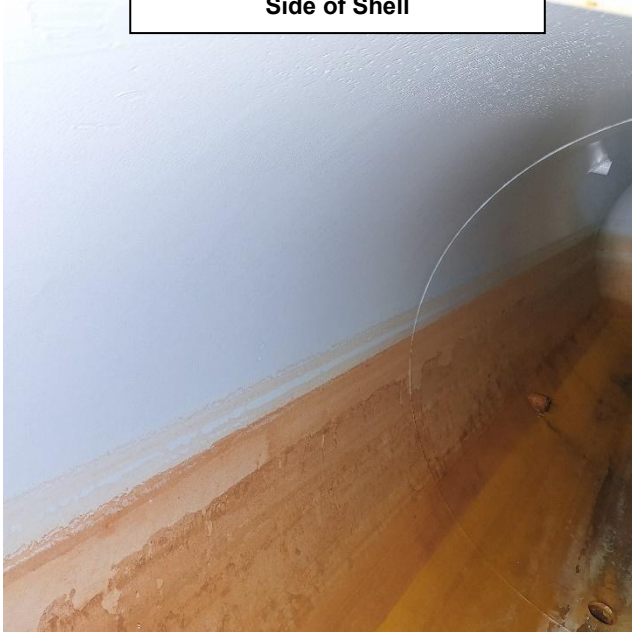
Outlet Side

Bottom of Shell



Visual Inspection Photos (Internals from Manway) – Flare Knockout Drum (SN 10154B)

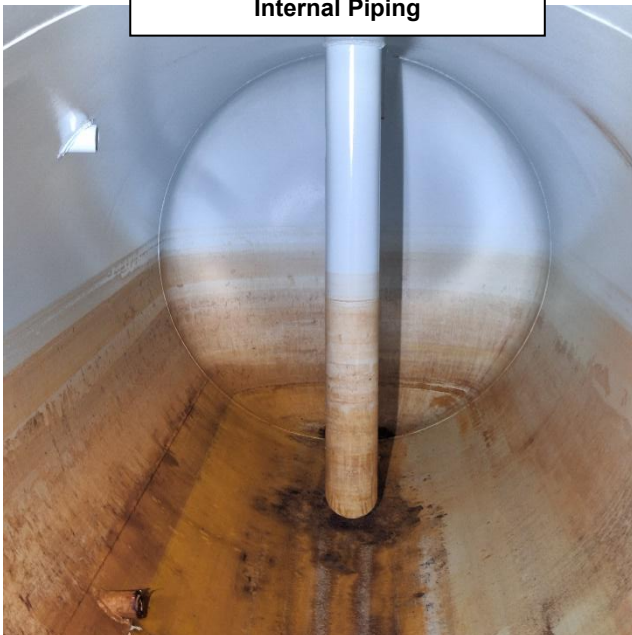
Side of Shell



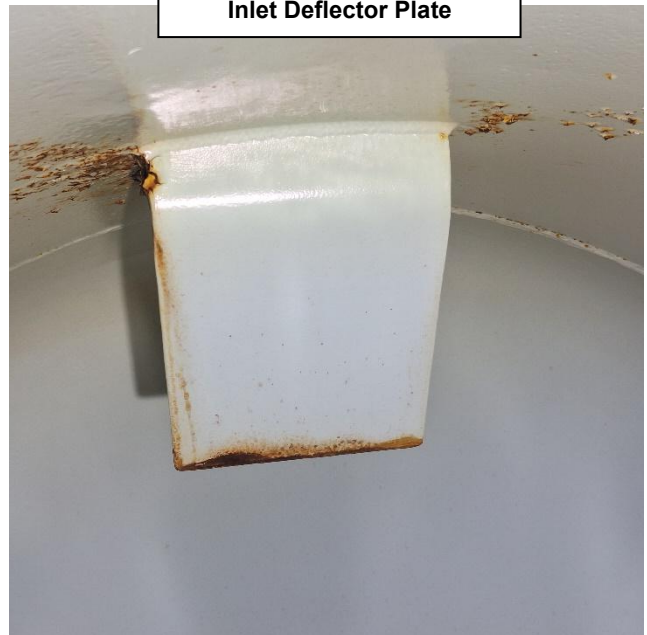
Top of Shell



Internal Piping



Inlet Deflector Plate

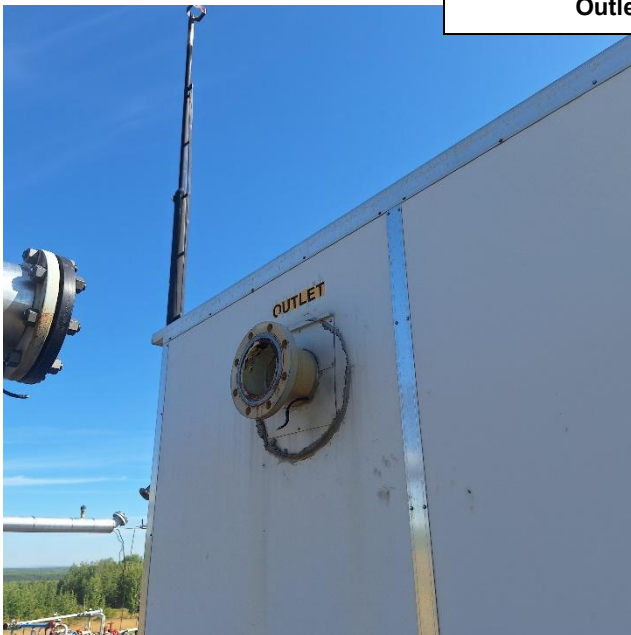


Visual Inspection Photos (6" Inlet/Outlet Nozzles) – Flare Knockout Drum (SN 10154B)

Inlet Nozzle



Outlet Nozzle



Visual Inspection Photos (Accessibility) – Flare Knockout Drum (SN 10154B)

Lease Sign (Current Location)



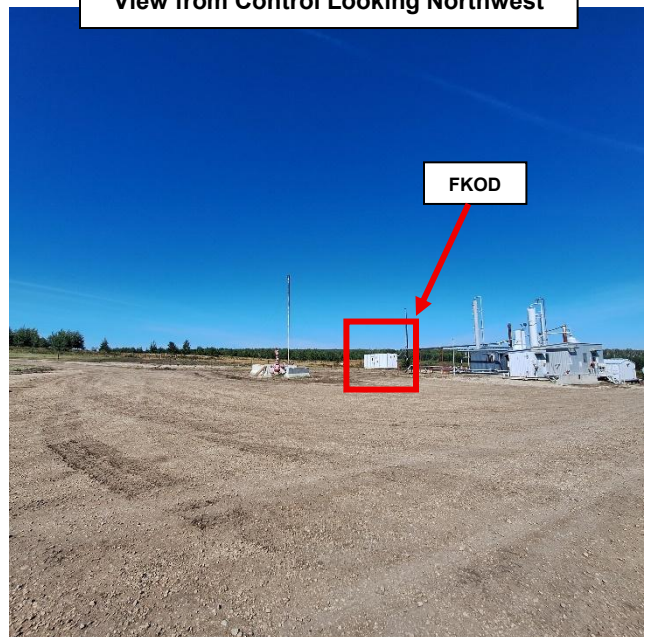
Access Road into Site Looking East



View from Lease Entrance Looking South



View from Control Looking Northwest



123 - 8805 Resources Road
Grande Prairie, AB
T8V 3A6
phone: 780-933-9700
lsmith@lanceinspections.com



**Informational Visual Inspection
Report**
**Informational Visual Inspection_SN
10154B FKOD_aug2025**

Page 10 of 11

Visual Inspection Photos (Skid Dimensions) – Flare Knockout Drum (SN 10154B)



123 - 8805 Resources Road
Grande Prairie, AB
T8V 3A6
phone: 780-933-9700
lsmith@lanceinspections.com



**Informational Visual Inspection
Report**
**Informational Visual Inspection_SN
10154B FKOD_aug2025**

Page 11 of 11

Visual Inspection Photos (Skid Dimensions) – Flare Knockout Drum (SN 10154B)

