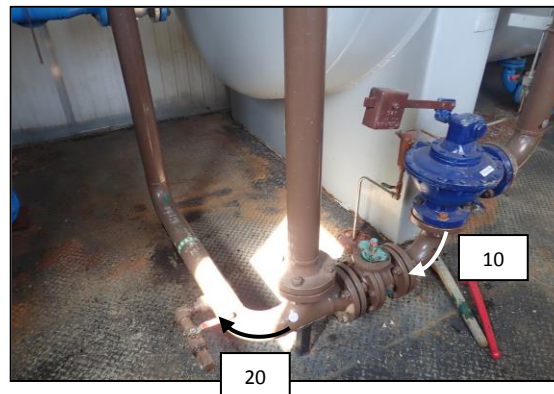
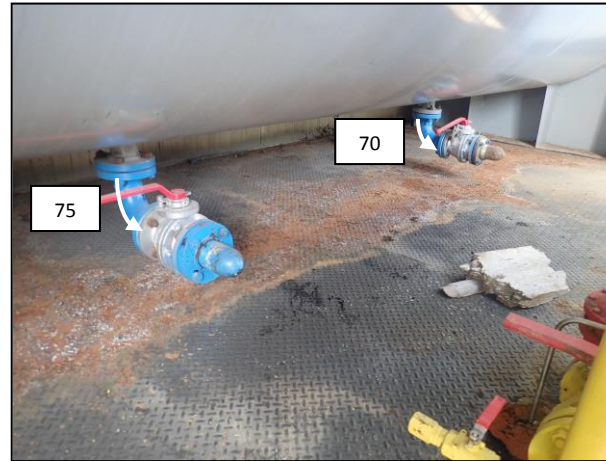




Dwg:	190	Vessel Name:	Free Water Knockout	Shell MAWP PSI:	50	Shell MAWT F:	210
Surface LSD:	05-20-004-04W2	Vessel Number:		Tube MAWP PSI:	0	Tube MAWT F:	0
Downhole LSD:		Serial Number:	4848	Vessel Size:	84.00" OD	Vessel CA:	0.0000
District Unit:	Run 16 – Pinto	Tag Number:	RAMS ID: 851452	Head Material:	SA-516-70	Head Nominal:	0.3125"
Location:	Field	CRN:	A 0338.324	Shell Material:	SA-516-70	Shell Nominal:	0.250"
Skid:		Manufacturer:	Fre Flo Oil Industries	Year Built:	1990	Technician:	C. Coleman
Notes:							



Dwg:	190	Vessel Name:	Free Water Knockout	Shell MAWP PSI:	50	Shell MAWT F:	210
Surface LSD:	05-20-004-04W2	Vessel Number:		Tube MAWP PSI:	0	Tube MAWT F:	0
Downhole LSD:		Serial Number:	4848	Vessel Size:	84.00" OD	Vessel CA:	0.0000
District Unit:	Run 16 – Pinto	Tag Number:	RAMS ID: 851452	Head Material:	SA-516-70	Head Nominal:	0.3125"
Location:	Field	CRN:	A 0338.324	Shell Material:	SA-516-70	Shell Nominal:	0.250"
Skid:		Manufacturer:	Fre Flo Oil Industries	Year Built:	1990	Technician:	C. Coleman
Notes:							

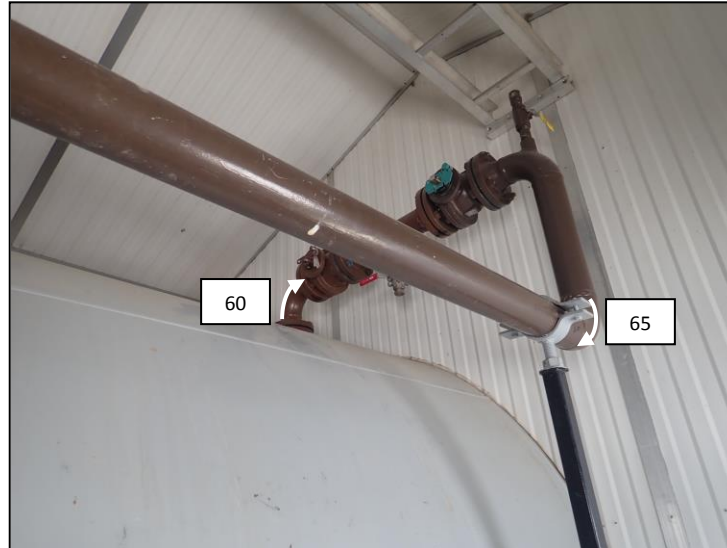




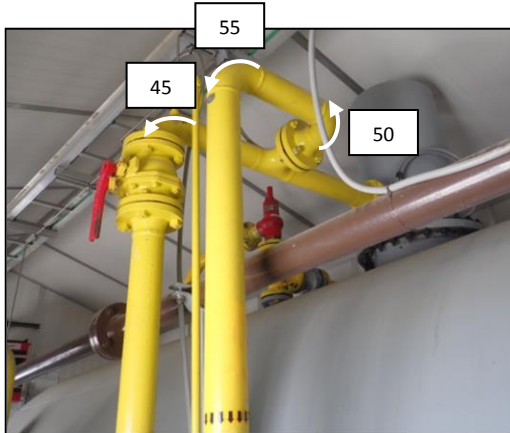
CRESCENT POINT

Survey Date: 04/02/2018

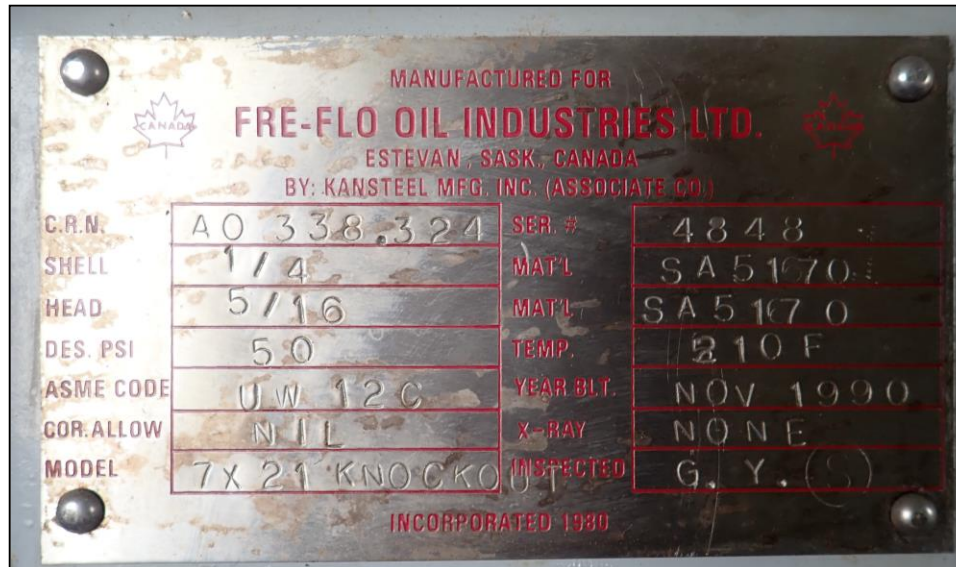
Dwg:	190	Vessel Name:	Free Water Knockout	Shell MAWP PSI:	50	Shell MAWT F:	210
Surface LSD:	05-20-004-04W2	Vessel Number:		Tube MAWP PSI:	0	Tube MAWT F:	0
Downhole LSD:		Serial Number:	4848	Vessel Size:	84.00" OD	Vessel CA:	0.0000
District Unit:	Run 16 – Pinto	Tag Number:	RAMS ID: 851452	Head Material:	SA-516-70	Head Nominal:	0.3125"
Location:	Field	CRN:	A 0338.324	Shell Material:	SA-516-70	Shell Nominal:	0.250"
Skid:		Manufacturer:	Fre Flo Oil Industries	Year Built:	1990	Technician:	C. Coleman
Notes:							



Dwg:	190	Vessel Name:	Free Water Knockout	Shell MAWP PSI:	50	Shell MAWT F:	210
Surface LSD:	05-20-004-04W2	Vessel Number:		Tube MAWP PSI:	0	Tube MAWT F:	0
Downhole LSD:		Serial Number:	4848	Vessel Size:	84.00" OD	Vessel CA:	0.0000
District Unit:	Run 16 – Pinto	Tag Number:	RAMS ID: 851452	Head Material:	SA-516-70	Head Nominal:	0.3125"
Location:	Field	CRN:	A 0338.324	Shell Material:	SA-516-70	Shell Nominal:	0.250"
Skid:		Manufacturer:	Fre Flo Oil Industries	Year Built:	1990	Technician:	C. Coleman
Notes:							



Dwg:	190	Vessel Name:	Free Water Knockout	Shell MAWP PSI:	50	Shell MAWT F:	210
Surface LSD:	05-20-004-04W2	Vessel Number:		Tube MAWP PSI:	0	Tube MAWT F:	0
Downhole LSD:		Serial Number:	4848	Vessel Size:	84.00" OD	Vessel CA:	0.0000
District Unit:	Run 16 – Pinto	Tag Number:	RAMS ID: 851452	Head Material:	SA-516-70	Head Nominal:	0.3125"
Location:	Field	CRN:	A 0338.324	Shell Material:	SA-516-70	Shell Nominal:	0.250"
Skid:		Manufacturer:	Fre Flo Oil Industries	Year Built:	1990	Technician:	C. Coleman
Notes:							






ULTRASONIC CORROSION SURVEY

Survey Name: CRESCENT POINT

Report No.: 190

Survey Date: 04/02/2018

LSD: 05-20-004-04W2	Dwg: 190	Vessel Number:	Manufacturer: FRE-FLO OIL INDUSTRIES	Technician: C. COLEMAN
Downhole LSD:		Vessel Name: FREE WATER KNOCKOUT	Serial Number: 4848	Certification: CGSB / SNT-TC-1A
District Unit: RUN 16 - PINTO		Year Built: 1990	Shell MAWP PSI: 50 MAWT F: 210	UT I / MT II #13265
Location: FIELD		Tag Number: RAMS ID: 851452	Tube MAWP PSI: 0 MAWT F: 0	
Skid:		CRN: A 0338.324	Vessel CA: 0.0000	

Band	Description		Baseline	Previous	Current	Material	Nominal	CA	TMIN	ST Loss MPY	LT Loss MPY	Recommended Retirement Date
00	Piping	Ref	2018	0.2140	2018	0.2140						
Shape	90° Elbow	Min		0.2100		0.2100	A 234 - WPB	0.2160	0.0270	0.0050		
OD	3.5	Avg		0.2210		0.2210						
Spec.	B31.3											Comments:
05	Piping	Ref	2018	0.2310	2018	0.2310						
Shape	90° Elbow	Min		0.2230		0.2230	A 234 - WPB	0.2160	0.0270	0.0050		
OD	3.5	Avg		0.2570		0.2570						
Spec.	B31.3											Comments:
10	Piping	Ref	2018	0.2290	2018	0.2290						
Shape	90° Elbow	Min		0.2190		0.2190	A 234 - WPB	0.2160	0.0270	0.0050		
OD	3.5	Avg		0.2240		0.2240						
Spec.	B31.3											Comments:
15	Piping	Ref	2018	0.2560	2018	0.2560						
Shape	90° Elbow	Min		0.2310		0.2310	A 234 - WPB	0.2160	0.0270	0.0050		
OD	3.5	Avg		0.2440		0.2440						
Spec.	B31.3											Comments:



ULTRASONIC CORROSION SURVEY

Survey Name: CRESCENT POINT

Report No.: 190

Survey Date: 04/02/2018

LSD: 05-20-004-04W2	Dwg: 190	Vessel Number:	Manufacturer: FRE-FLO OIL INDUSTRIES	Technician: C. COLEMAN
Downhole LSD:		Vessel Name: FREE WATER KNOCKOUT	Serial Number: 4848	Certification: CGSB / SNT-TC-1A
District Unit: RUN 16 - PINTO		Year Built: 1990	Shell MAWP PSI: 50 MAWT F: 210	UT I / MT II #13265
Location: FIELD		Tag Number: RAMS ID: 851452	Tube MAWP PSI: 0 MAWT F: 0	
Skid:		CRN: A 0338.324	Vessel CA: 0.0000	

Band	Description		Baseline	Previous	Current	Material	Nominal	CA	TMIN	ST Loss MPY	LT Loss MPY	Recommended Retirement Date
20	Piping	Ref	2018	0.2380	2018	0.2380						
Shape	90° Elbow	Min		0.2300		0.2300	A 234 - WPB	0.2160	0.0270	0.0050		
OD	3.5	Avg		0.2400		0.2400						
Spec.	B31.3											
Comments:												
25	Piping	Ref	2018	0.2260	2018	0.2260						
Shape	90° Elbow	Min		0.2240		0.2240	A 234 - WPB	0.2160	0.0270	0.0050		
OD	3.5	Avg		0.2370		0.2370						
Spec.	B31.3											
Comments:												
30	Piping	Ref	2018	0.2210	2018	0.2210						
Shape	90° Elbow	Min		0.1930		0.1930	A 234 - WPB	0.2160	0.0270	0.0050		
OD	3.5	Avg		0.2200		0.2200						
Spec.	B31.3											
Comments:												
35	Piping	Ref	2018	0.2040	2018	0.2040						
Shape	90° Elbow	Min		0.1800		0.1800	A 234 - WPB	0.2160	0.0270	0.0050		Caution
OD	3.5	Avg		0.2200		0.2200						
Spec.	B31.3											
Comments:												



ULTRASONIC CORROSION SURVEY

Survey Name: CRESCENT POINT

Report No.: 190

Survey Date: 04/02/2018

LSD: 05-20-004-04W2	Dwg: 190	Vessel Number:	Manufacturer: FRE-FLO OIL INDUSTRIES	Technician: C. COLEMAN
Downhole LSD:		Vessel Name: FREE WATER KNOCKOUT	Serial Number: 4848	Certification: CGSB / SNT-TC-1A
District Unit: RUN 16 - PINTO		Year Built: 1990	Shell MAWP PSI: 50 MAWT F: 210	UT I / MT II #13265
Location: FIELD		Tag Number: RAMS ID: 851452	Tube MAWP PSI: 0 MAWT F: 0	
Skid:		CRN: A 0338.324	Vessel CA: 0.0000	

Band	Description		Baseline	Previous	Current	Material	Nominal	CA	TMIN	ST Loss MPY	LT Loss MPY	Recommended Retirement Date
40	Piping	Ref	2018	0.2250	2018	0.2250						
Shape	90° Elbow	Min		0.2230		0.2230	A 234 - WPB	0.2160	0.0270	0.0050		
OD	3.5	Avg		0.2280		0.2280						
Spec.	B31.3											Comments:
45	Piping	Ref	2018	0.2770	2018	0.2770						
Shape	90° Elbow	Min		0.2190		0.2190	A 234 - WPB	0.2160	0.0270	0.0050		
OD	3.5	Avg		0.2350		0.2350						
Spec.	B31.3											Comments:
50	Piping	Ref	2018	0.2240	2018	0.2240						
Shape	90° Elbow	Min		0.2190		0.2190	A 234 - WPB	0.2160	0.0270	0.0050		
OD	3.5	Avg		0.2650		0.2650						
Spec.	B31.3											Comments:
55	Piping	Ref	2018	0.2180	2018	0.2180						
Shape	90° Elbow	Min		0.2180		0.2180	A 234 - WPB	0.2160	0.0270	0.0050		
OD	3.5	Avg		0.2220		0.2220						
Spec.	B31.3											Comments:



ULTRASONIC CORROSION SURVEY

Survey Name: CRESCENT POINT

Report No.: 190

Survey Date: 04/02/2018

LSD:	05-20-004-04W2	Dwg:	190	Vessel Number:		Manufacturer:	FRE-FLO OIL INDUSTRIES	Technician:	C. COLEMAN
Downhole LSD:				Vessel Name:	FREE WATER KNOCKOUT	Serial Number:	4848	Certification:	CGSB / SNT-TC-1A UT I / MT II #13265
District Unit:	RUN 16 - PINTO			Year Built:	1990	Shell MAWP PSI:	50	MAWT F:	210
Location:	FIELD			Tag Number:	RAMS ID: 851452	Tube MAWP PSI:	0	MAWT F:	0
Skid:				CRN:	A 0338.324	Vessel CA:	0.0000		

Band	Description		Baseline	Previous	Current	Material	Nominal	CA	TMIN	ST Loss MPY	LT Loss MPY	Recommended Retirement Date
60	Piping	Ref	2018	0.2120	2018	0.2120						
Shape	90° Elbow	Min		0.2050		0.2050	A 234 - WPB	0.2160	0.0270	0.0050		
OD	3.5	Avg		0.2090		0.2090						
Spec.	B31.3											
Comments:												
65	Piping	Ref	2018	0.2310	2018	0.2310						
Shape	90° Elbow	Min		0.2200		0.2200	A 234 - WPB	0.2160	0.0270	0.0050		
OD	3.5	Avg		0.2240		0.2240						
Spec.	B31.3											
Comments:												
70	Piping	Ref	2018	0.2130	2018	0.2130						
Shape	90° Elbow	Min		0.2030		0.2030	A 234 - WPB	0.2160	0.0270	0.0050		
OD	3.5	Avg		0.2090		0.2090						
Spec.	B31.3											
Comments:												
75	Piping	Ref	2018	0.2480	2018	0.2480						
Shape	90° Elbow	Min		0.2320		0.2320	A 234 - WPB	0.2160	0.0270	0.0050		
OD	3.5	Avg		0.2380		0.2380						
Spec.	B31.3											
Comments:												