

- LINETYPE LEGEND**
- PRIMARY FLOW
  - SECONDARY FLOW
  - ELECTRICAL LINE
  - INSTRUMENT AIR
  - X— CAPILLARY SIGNAL

Document Approval		REVISIONS					
Operations:	Print Name _____ Signature _____	DATE	DESCRIPTION	BY	CHK'D	APPR	REV
Facilities Engineering:	Print Name _____ Signature _____	12/23/19	ISSUED FOR RECORD PURPOSES CRC#2008437	LG	TCS	DBJ	0
Electrical:	Print Name _____ Signature _____						
Automation:	Print Name _____ Signature _____						
Other (specify)	Print Name _____ Signature _____						

**CALIFORNIA RESOURCES CORPORATION**

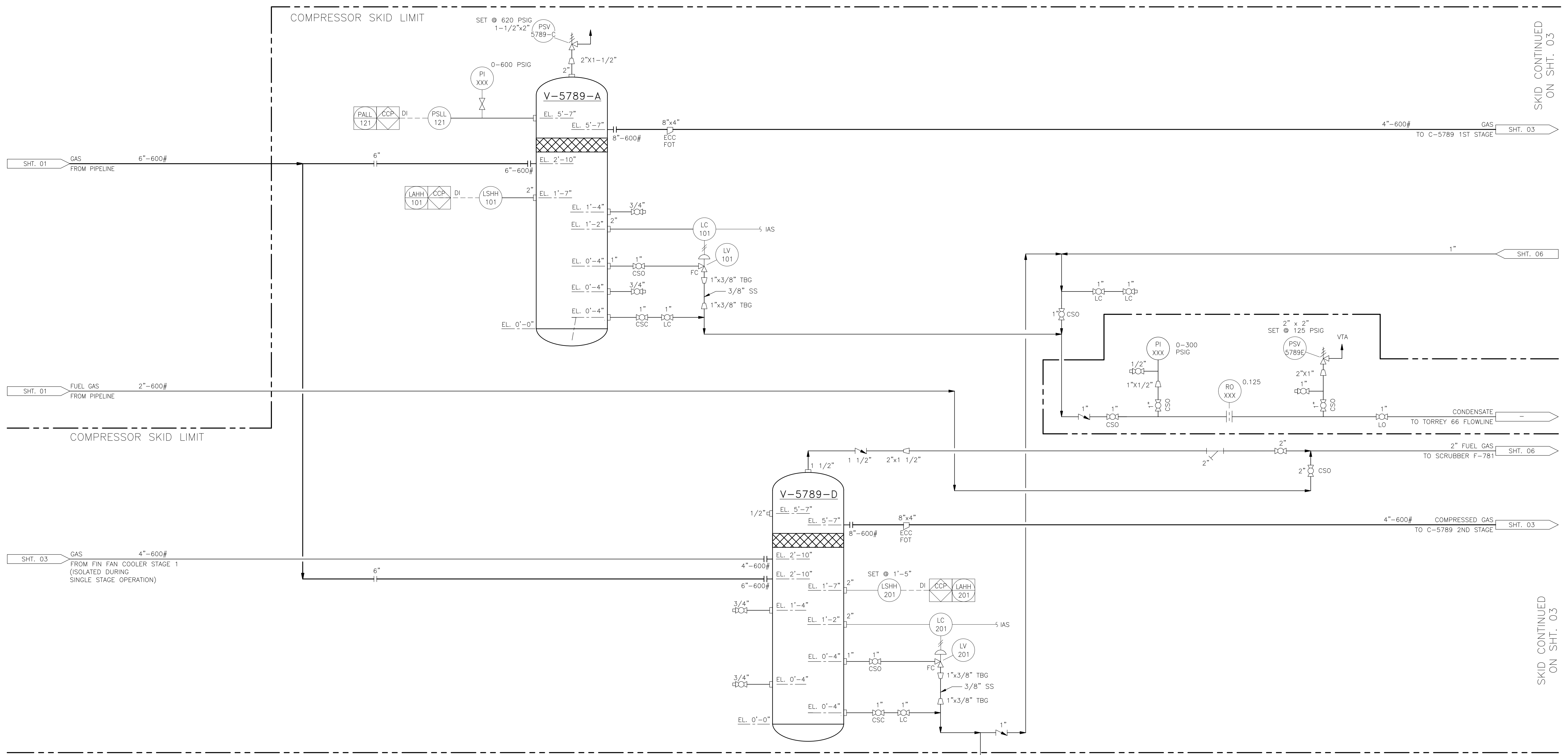
VENTURA BASIN  
 INLAND AREA - TORREY  
 SCVGP H.P. SALES BOOSTER COMPRESSOR  
 P&ID - SUCTION AND DISCHARGE PIPING

SCALE: NONE	DESIGNED BY: TCS	CHECKED BY: TCS	DRAWING NO. VB-ITC-TRY-P-52130	REV. 0
DATE: 12/23/19	DRAWN BY: LG	APPROVED BY:	SHEET # 1 OF 6	

PROJECT DRAWING NO.: VB-ITC-TRY-P-52130 SHT. 01

V-5789-A  
 STAGE 1 SUCTION SCRUBBER  
 20" OD x 6'-4" S/S  
 MAWP: 1350 PSIG @ 200°F

V-5789-D  
 STAGE 2 SUCTION SCRUBBER  
 20" OD x 6'-4" S/S  
 MAWP: 1350 PSIG @ 200°F



SKID CONTINUED  
ON SHT. 03

SKID CONTINUED  
ON SHT. 03

**LINETYPE LEGEND**  
 ——— PRIMARY FLOW  
 - - - SECONDARY FLOW  
 - - - - ELECTRICAL LINE  
 // // INSTRUMENT AIR  
 X X CAPILLARY SIGNAL

**IFRP**  
12/23/19

Document Approval		REVISIONS					
Operations:	_____	DATE	DESCRIPTION	BY	CHK'D	APPR	REV
Facilities Engineering:	_____	12/23/19	ISSUED FOR RECORD PURPOSES CRC#2008437	LG	TCS	DBJ	0
Electrical:	_____						
Automation:	_____						
Other (specify):	_____						

**CALIFORNIA RESOURCES CORPORATION**

VENTURA BASIN  
 INLAND AREA - TORREY  
 SCVGP H.P. SALES BOOSTER COMPRESSOR  
 P&ID - STAGE 1 SUCTION SCRUBBER V-5789-A & DISCHARGE SCRUBBER V-5789-D

SCALE: NONE	DESIGNED BY: TCS	CHECKED BY: TCS	DRAWING NO. VB-ITC-TRY-P-52130	REV. 0
DATE: 08/09/19	DRAWN BY: LG	APPROVED BY:	SHEET # 2 OF 6	

PROJECT DRAWING NO.: VB-ITC-TRY-P-52130 SHT. 02

V-5789-B  
1<sup>ST</sup> STAGE SUCTION BOTTLE  
16" ø x 3'-6" S/S  
MAWP: 1000 PSIG @ 250°F

V-5789-C  
1<sup>ST</sup> STAGE DISCHARGE BOTTLE  
16" ø x 3'-6" S/S  
MAWP: 1000 PSIG @ 250°F

C-5789  
GAS COMPRESSOR  
INGERSOLL-RAND RDS  
FRAME RATED POWER: 214.3 HP  
FRAME RATED SPEED: 1000 RPM  
STROKE: 5 1/2"  
TWO THROW, TWO STAGE  
FIRST STAGE  
9 1/2" CYLINDER (CYL-132)  
CYLINDER MAWP: 1100 PSIG  
SECOND STAGE  
6" CYLINDER (CYL-231)  
CYLINDER MAWP: 1650 PSIG  
MAX COOLING WATER PRESS: 75 PSIG (BOTH CYLINDERS)

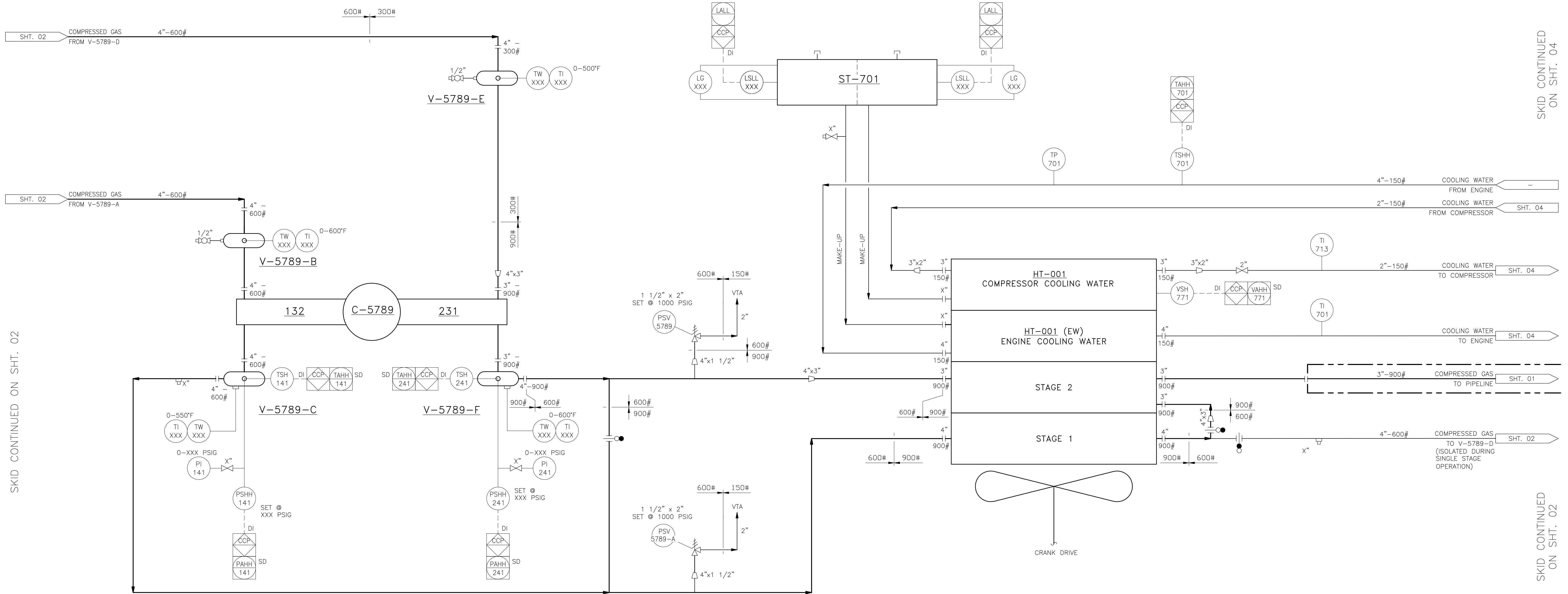
V-5789-E  
2<sup>ND</sup> STAGE SUCTION BOTTLE  
16" ø x 1'-6" S/S  
MAWP: 620 PSIG @ 200°F

V-5789-F  
2<sup>ND</sup> STAGE DISCHARGE BOTTLE  
24" ø x 4'-0" S/S  
MAWP: 1315 PSIG @ 300°F

ST-701  
COOLING WATER EXPANSION TANK  
X" x X'-X"

E-XXXX  
FIN FAN COOLER  
MAKE:  
STAGE 1: MAWP 1650 PSIG @ 350°F  
COOLING DUTY: XX MMBTU/HR  
STAGE 2: MAWP 1650 PSIG @ 350°F  
COOLING DUTY: XX MMBTU/HR  
ENGINE COOLING WATER: MAWP XXX PSIG @ XXX°F  
COMPRESSOR COOLING WATER: MAWP XXX PSIG @ XXX°F

COMPRESSOR SKID LIMIT



SKID CONTINUED ON SHT. 02

SKID CONTINUED ON SHT. 04

SKID CONTINUED ON SHT. 02

COMPRESSOR SKID LIMIT

LINETYPE LEGEND

- PRIMARY FLOW
- SECONDARY FLOW
- ELECTRICAL LINE
- INSTRUMENT AIR
- X— CAPILLARY SIGNAL

IFRP  
12/23/19

Document Approval	
Operations:	Print Name _____ Signature _____
Facilities Engineering:	Print Name _____ Signature _____
Electrical:	Print Name _____ Signature _____
Automation:	Print Name _____ Signature _____
Other (specify):	Print Name _____ Signature _____

REVISIONS						
DATE	DESCRIPTION	BY	CHK'D	APPR	REV	
12/23/19	ISSUED FOR RECORD PURPOSES CRC#2008437	LG	TCS	DBJ	0	

**CALIFORNIA RESOURCES CORPORATION**

VENTURA BASIN  
INLAND AREA - TORREY  
SCVGP H.P. SALES BOOSTER COMPRESSOR  
P&ID - GAS COMPRESSOR C-5789

SCALE: NONE	DESIGNED BY: TCS	CHECKED BY: TCS	DRAWING NO. VB-ITC-TRY-P-52130	REV. 0
DATE: 08/09/19	DRAWN BY: LG	APPROVED BY:	SHEET # 3 OF 6	

PROJECT DRAWING NO.: VB-ITC-TRY-P-52130 SHT. 03

**P-711**  
COOLING WATER PUMP  
CENTRIFUGAL PUMP  
MODEL: XXXX  
38 GPM @ 47 PSIG

**MP-711**  
X HP @ 3450 RPM

**P-ZZZ**  
CYLINDER LUBRICATOR  
MANUAL

**F-YYY**  
LUBE OIL FILTERS

**E-730**  
LUBE OIL COOLER

**F-721**  
LUBE OIL FILTERS

**E-XXX**  
LUBE OIL COOLER

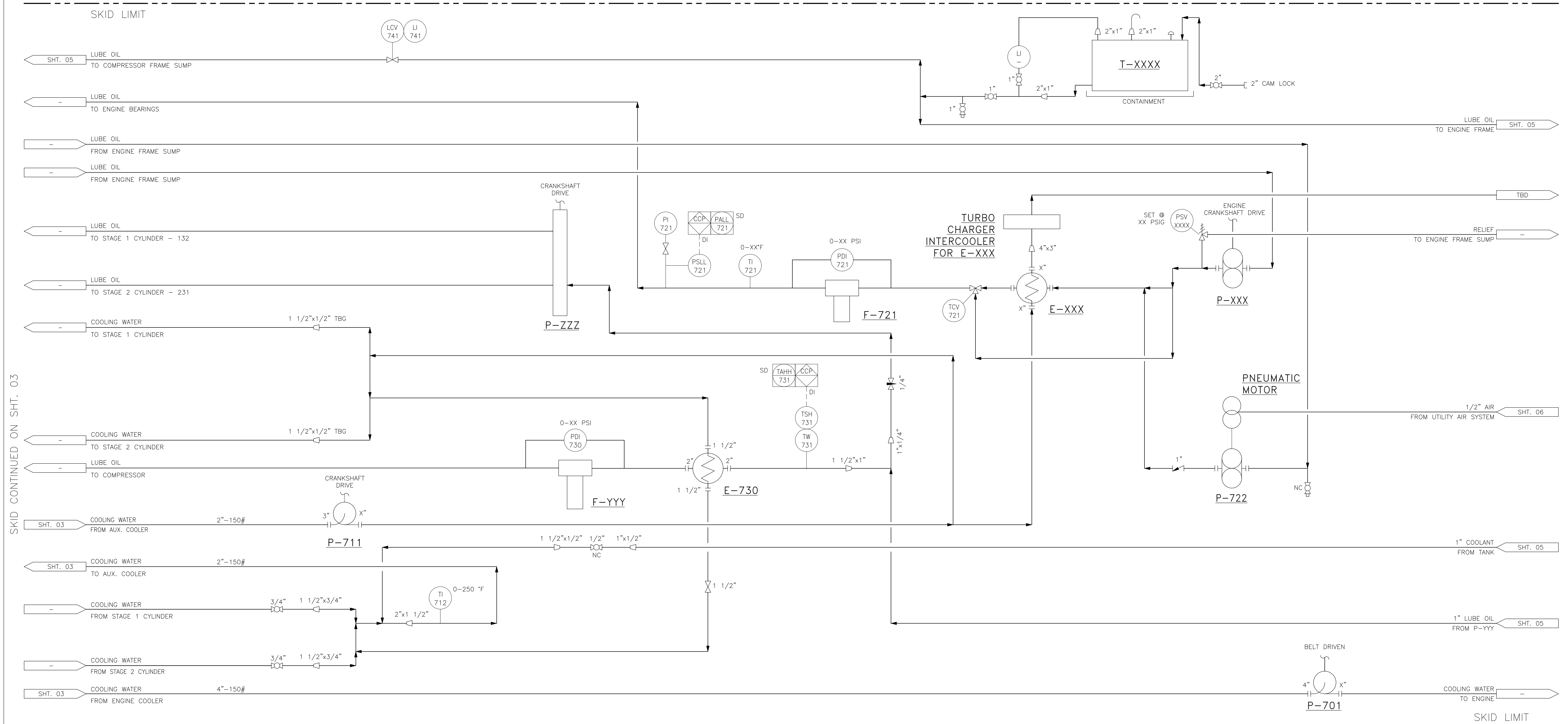
**T-XXXX**  
LUBE OIL MAKEUP TANK  
4" OD X6" LONG  
565 GALLONS  
STEEL

**P-XXX**  
LUBE OIL PUMP  
CRANK DRIVE

**P-722**  
ENGINE  
PRE-LUBE PUMP  
CENTRIFUGAL  
IAM32 XX GPM @  
XX PSIG  
XX HP @ 3450 RPM

**MP-722**  
PRE-LUBE PUMP MOTOR

**P-701**  
COOLING WATER PUMP  
CENTRIFUGAL PUMP  
MODEL: XXXX  
395 GPM @ 44 FT.



SKID CONTINUED ON SHT. 03

PROJECT DRAWING NO.: VB-ITC-TRY-P-52130 SHT. 04

**LINETYPE LEGEND**

———	PRIMARY FLOW
-----	SECONDARY FLOW
----	ELECTRICAL LINE
---	INSTRUMENT AIR
-X-	CAPILLARY SIGNAL

**IFRP**  
12/23/19

Document Approval			REVISIONS							CALIFORNIA RESOURCES CORPORATION			
Operations:	Print Name	Signature	DATE	DESCRIPTION	BY	CHK'D	APPR	REV	<p style="text-align: center;"><b>VENTURA BASIN</b> INLAND AREA - TORREY SCVGP H.P. SALES BOOSTER COMPRESSOR P&amp;ID - AUXILIARY EQUIPMENT FOR C-5789</p> <p>SCALE: NONE    DESIGNED BY: TCS    CHECKED BY: TCS    DRAWING NO. VB-ITC-TRY-P-52130    REV. 0 DATE: 08/09/19    DRAWN BY: LG    APPROVED BY:    SHEET #4 OF 6</p>				
Facilities Engineering:	Print Name	Signature	12/23/19	ISSUED FOR RECORD PURPOSES CRC#2008437	LG	TCS	DBJ	0					
Electrical:	Print Name	Signature											
Automation:	Print Name	Signature											
Other (specify)	Print Name	Signature											

**P-5005**  
COOLANT PUMP  
DIAPHRAM PUMP

**PACKER VENT SCRUBBER**  
6" ID X 2'-3" F/S  
ANSI 150

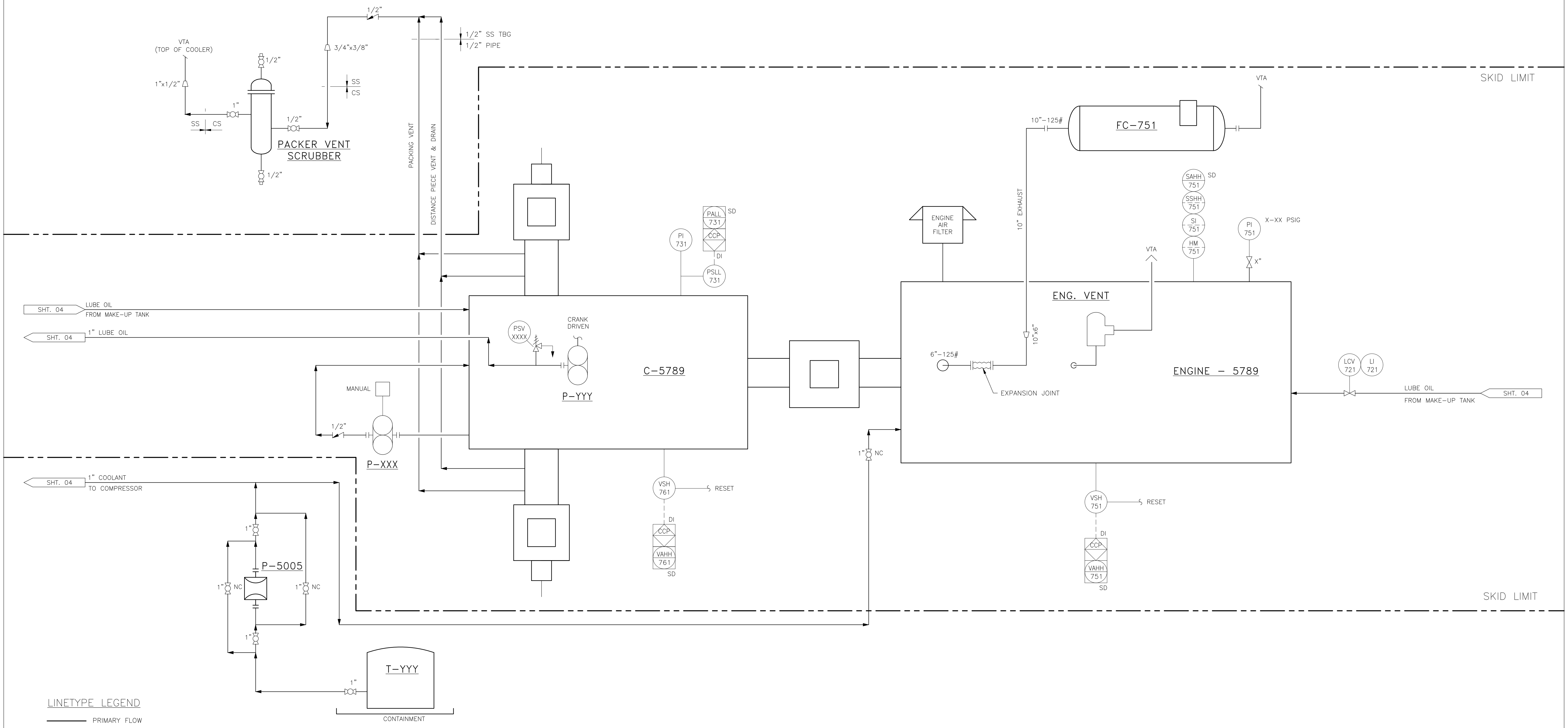
**P-XXX**  
COMPRESSOR PRE-LUBE PUMP  
MANUAL

**T-YYY**  
COOLANT TANK  
3' ODX 5' TALL  
260 GALLONS  
HDPE

**P-YYY**  
COMPRESSOR LUBE OIL PUMP  
CRANK DRIVEN  
INTERNAL

**FC-751**  
3-WAY CATALYST & SILENCER

**ENGINE**  
WAUKESHA F3521GSI  
615 HP @ 1000 RPM  
W/ 130°F INTERCOOLER TEMP.



**LINETYPE LEGEND**

- PRIMARY FLOW
- SECONDARY FLOW
- ELECTRICAL LINE
- INSTRUMENT AIR
- X- CAPILLARY SIGNAL

**IFRP**  
12/23/19

Document Approval		
Operations:	Print Name	Signature
Facilities Engineering:	Print Name	Signature
Electrical:	Print Name	Signature
Automation:	Print Name	Signature
Other (specify)	Print Name	Signature

REVISIONS						
DATE	DESCRIPTION	BY	CHK'D	APPR	REV	
12/23/19	ISSUED FOR RECORD PURPOSES CRC#2008437	LG	TCS	DBJ	0	

**CALIFORNIA RESOURCES CORPORATION**

VENTURA BASIN  
INLAND AREA - TORREY  
SCVGP H.P. SALES BOOSTER COMPRESSOR  
P&ID - MAJOR EQUIPMENT

SCALE: NONE	DESIGNED BY: TCS	CHECKED BY: TCS	DRAWING NO. VB-ITC-TRY-P-52130	REV. 0
DATE: 08/09/19	DRAWN BY: LG	APPROVED BY:	SHEET #5 OF 6	

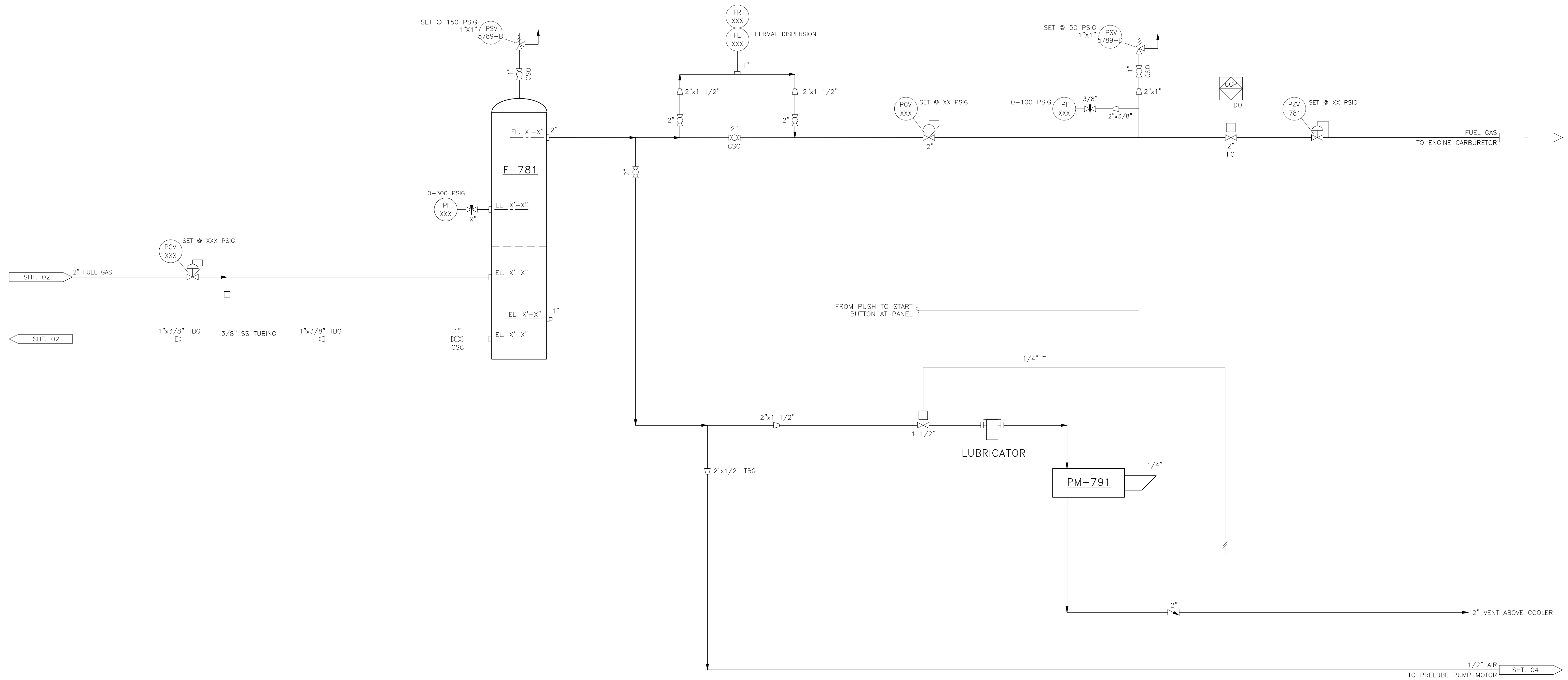
PROJECT DRAWING NO.: VB-ITC-TRY-P-52130 SHT. 05

F-781  
FUEL GAS FILTER/SEPARATOR

F-791  
AIR FILTER

PM-791  
STARTER MOTOR

SKID LIMIT



SKID LIMIT

LINETYPE LEGEND

- PRIMARY FLOW
- SECONDARY FLOW
- ELECTRICAL LINE
- INSTRUMENT AIR
- CAPILLARY SIGNAL

Document Approval		
Operations:	Print Name	Signature
Facilities Engineering:	Print Name	Signature
Electrical:	Print Name	Signature
Automation:	Print Name	Signature
Other (specify)	Print Name	Signature

REVISIONS						
DATE	DESCRIPTION	BY	CHK'D	APPR	REV	
12/23/19	ISSUED FOR RECORD PURPOSES	LG	TCS	DBJ	0	

**CALIFORNIA RESOURCES CORPORATION**

VENTURA BASIN  
INLAND AREA - TORREY  
SCVGP H.P. SALES BOOSTER COMPRESSOR  
P&ID - FUEL GAS SYSTEM & START AIR SYSTEM

SCALE: NONE	DESIGNED BY: TCS	CHECKED BY: TCS	DRAWING NO. VB-ITC-TRY-P-52130	REV. 0
DATE: 08/09/19	DRAWN BY: LG	APPROVED BY:	SHEET #6 OF 6	

PROJECT DRAWING NO.: VB-ITC-TRY-P-52130 SHT. 06