

GENERAL NOTES

- THIS DRAWING IS NOT TO BE USED FOR CONSTRUCTION UNLESS STAMPED "RELEASED FOR MANUFACTURE".
- ALL PROCESS PIPING TO BE CLAMPED AS NEAR TO ALL ELBOWS AS POSSIBLE, REFER TO DRAWING 12-8008.
- FOR DESIGN PARAMETERS REFER TO PROJECT SCOPE SUMMARY DRAWING.
- FOR CUSTOMER CONNECTIONS REFER TO GENERAL ARRANGEMENT DRAWING.
- PIPE IMPLES 1-1/2" AND SMALLER TO BE MIN. 120" WALL THICKNESS.
- ALL INSTRUMENT VENTS TO COMMON VENT HEADER.

LEGEND

○	LOCALLY MOUNTED	—V—	VENT LINE (TURNING)
□	SHD CONTROL PANEL	—D—	DRAIN LINE (TURNING)
□	LOCAL GAUGE PANEL	—OL—	OLE LINE (TURNING)
○	CUSTOMER CONNECTIONS	—W—	WATER LINE (TURNING)
□	MANUFACTURED COMPONENTS	—H—	HYDRAULIC LINE (TURNING)
□	MAJOR COMPONENTS	—P—	PNEUMATIC SIGNAL (TURNING)
□	UNMANAGED CONNECTION	—E—	ELECTRIC SIGNAL CONNECTIONS
□	UNMANAGED CONNECTION	—U—	UTILITIES (SEWER) TURNING
□	PROGRAMMABLE LOGIC CONTROL	—C—	CAPILLARY LINE (TURNING)
○	INSTRUMENT SUPPLY GAS	—L—	LOW POINT DRAIN (PLUGGED)
			FOR REF. ONLY

REV	DESCRIPTION	DATE	DRAWN BY	CHECKED BY
4	AS BUILT	01/29/14	BL	
3	MOVED PI TO BOTTLES, MOVED VS TO SF	01/27/28	SH	
2	ADDED PYS	01/27/23	RED	
1	FOR CONSTRUCTION	01/27/12	RED	
0	FOR APPROVAL	01/26/26	RED	

ENERFLEX Manufacturing
ENERFLEX SYSTEMS LTD.
4700 47th Street S.E.
Calgary, Alberta
T2B 3K1

CALGARY
 EDMONTON
 RED DEER
 VICTORIA
 GRANDE PRAYRE

 SURREY, B.C.
 FORT ST. JOHN, B.C.
 LLOYMERSBURG, MANITOBA
 DUNDAS, ONTARIO
 DUNDAS, AUSTRALIA

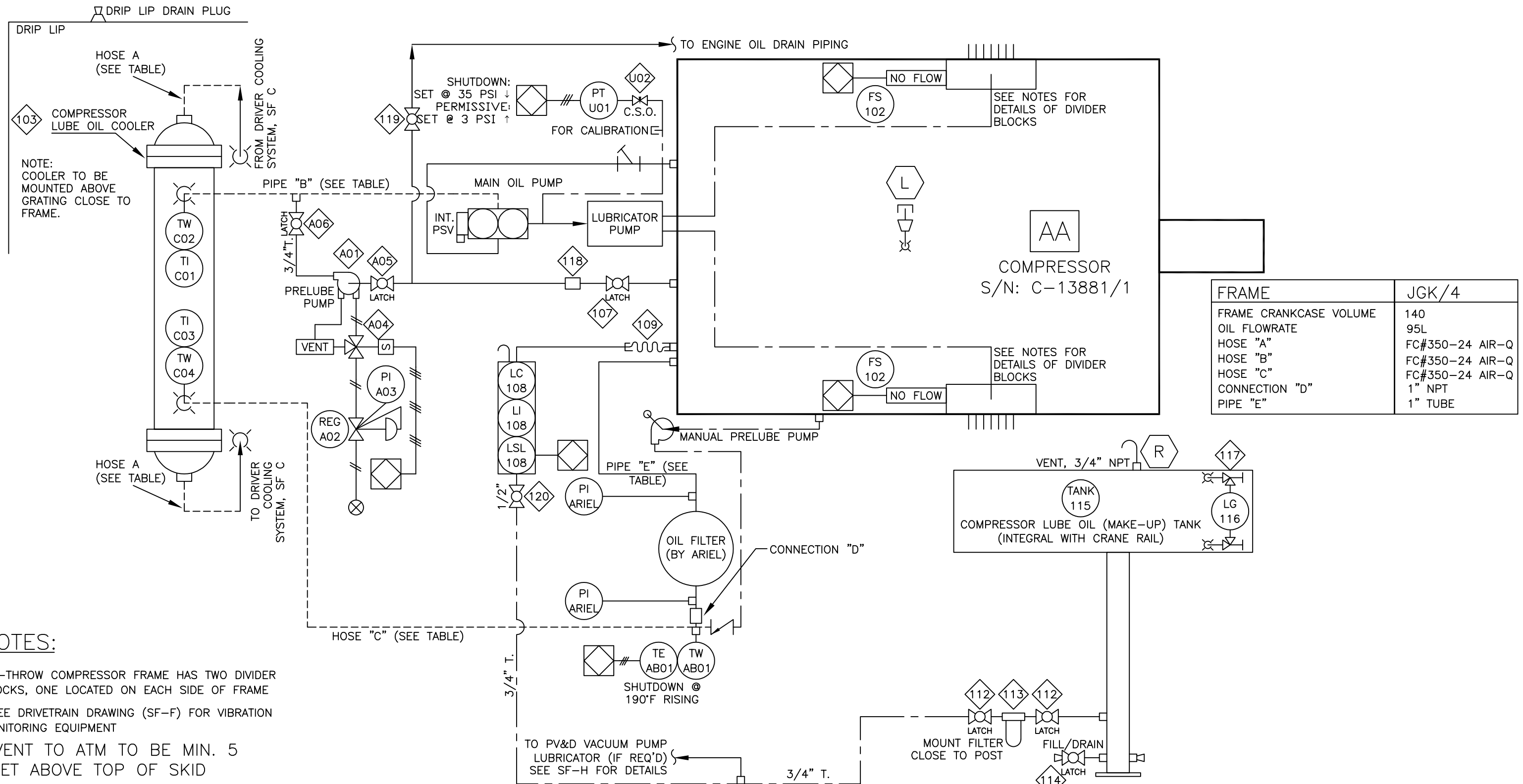
TITLE: PROCESS & INSTRUMENTATION DIAGRAM
ARIEL JOK/4, WAUKESHA L7042GSI, AIR-X-HEMPHILL 156EF
COMPRESSOR PACKAGE

FOR: NEXEN-WASAGANA ENERGY LTD

CONSULTANT:	DESIGN BY:	DATE:	DRAWN BY:	DATE:	CHKD BY:	DATE:	APP'D BY:	DATE:	LSO:	DATE:	JOB NO.:	OPEN #:
MD	MD	01/04/26	MD	01/04/26	MD	01/04/26	MD	01/04/26	MD	01/04/26	PFM01061	50

© 2001 Enerflex Systems Ltd.
 REPRODUCTION OF ANY PORTION OF THESE MATERIALS WITHOUT THE EXPRESS
 WRITTEN CONSENT OF ENERFLEX SYSTEMS LTD. IS STRICTLY PROHIBITED.
 THESE MATERIALS SHALL NOT BE USED FOR ANY PURPOSE OTHER THAN THE
 REPAIR AND MAINTENANCE OF THE PRODUCTS TO WHICH THEY RELATE.

© 2001 ENERFLEX SYSTEMS LTD.
REPRODUCTION OF ANY PORTION OF THESE MATERIALS WITHOUT THE EXPRESS
WRITTEN CONSENT OF ENERFLEX SYSTEMS LTD. IS STRICTLY PROHIBITED.
THESE MATERIALS SHALL NOT BE USED FOR ANY PURPOSE OTHER THAN THE
REPAIR AND MAINTENANCE OF THE PRODUCTS TO WHICH THEY RELATE.



NOTES:

>4-THROW COMPRESSOR FRAME HAS TWO DIVIDER
BLOCKS, ONE LOCATED ON EACH SIDE OF FRAME

>SEE DRIVETRAIN DRAWING (SF-F) FOR VIBRATION
MONITORING EQUIPMENT

>VENT TO ATM TO BE MIN. 5
FEET ABOVE TOP OF SKID

BASED ON SD20.0110, REV.3

<div>ENERFLEX</div> <div>www.enerflex.com</div>	3	AS BUILT	DLL	01/09/12	CUSTOMER: NEXEN-WASCANA ENERGY LTD BRONSON NORTH, SASKATCHEWAN	ORIG DWN BY:	REO	TITLE: COMPRESSOR EQUIPMENT AND CONTROLS COMPRESSOR OIL SYSTEM ARIEL JGK/4, WAUKESHA L7042GSI, AIR-X-HEMPHILL 156EF					
	2	CORRECTED NOTE NEAR 103	JLL	01/07/26		DATE:	01/06/27						
	1	RELEASED FOR CONSTRUCTION	SJK	01/07/12		APP'R'D BY:	SJK						
	0	FOR APPROVAL	SJK	01/07/12		DATE:	01/06/27						
	REV.	DESCRIPTION	BY	DATE	JOB No.:	M01061	DWG.	SFM01061A	SHT	1	OF	1	OP

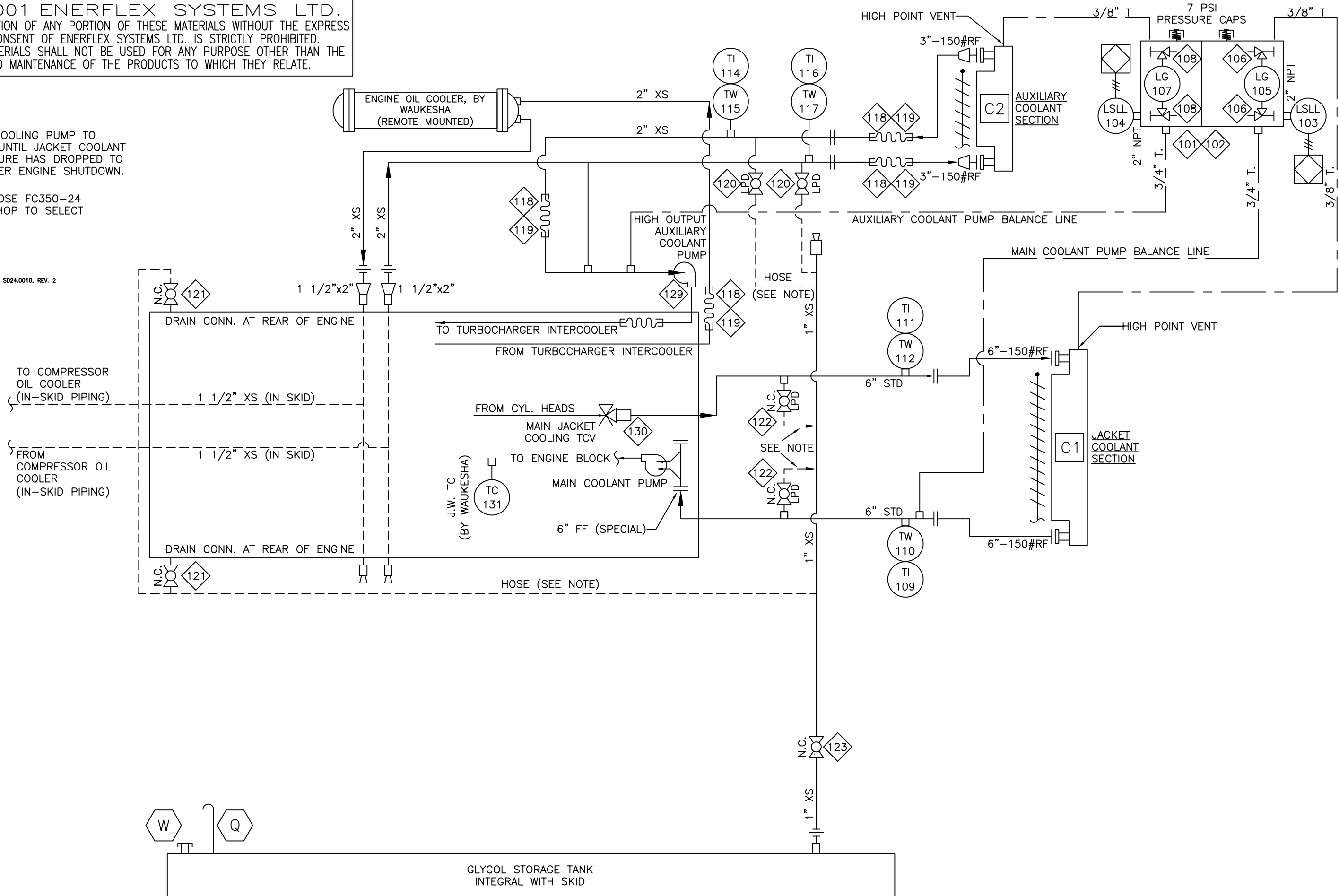
© 2001 ENERFLEX SYSTEMS LTD.
REPRODUCTION OF ANY PORTION OF THESE MATERIALS WITHOUT THE EXPRESS
WRITTEN CONSENT OF ENERFLEX SYSTEMS LTD. IS STRICTLY PROHIBITED.
THESE MATERIALS SHALL NOT BE USED FOR ANY PURPOSE OTHER THAN THE
REPAIR AND MAINTENANCE OF THE PRODUCTS TO WHICH THEY RELATE.

NOTES

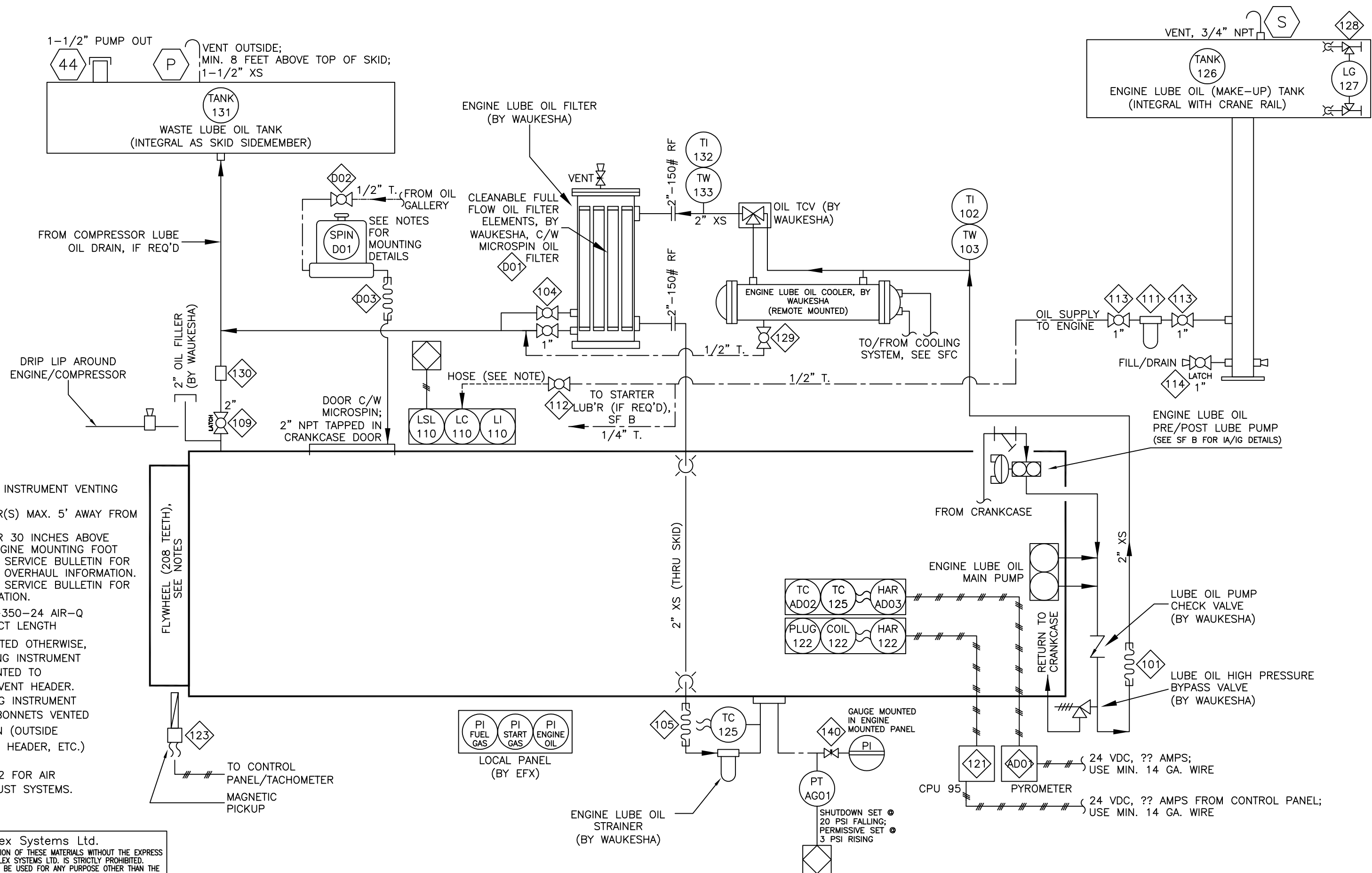
> POST COOLING PUMP TO
OPERATE UNTIL JACKET COOLANT
TEMPERATURE HAS DROPPED TO
160°F AFTER ENGINE SHUTDOWN.

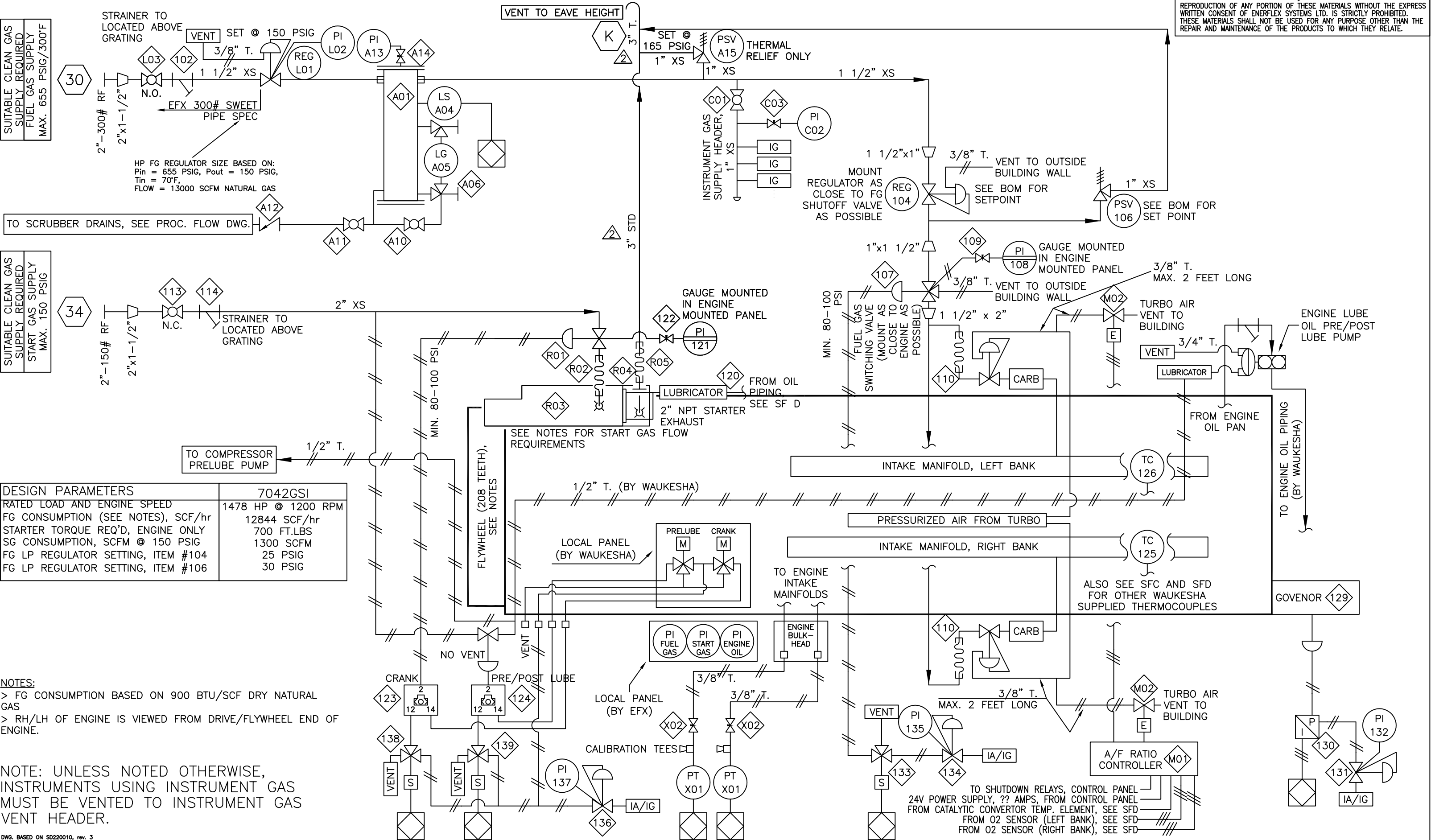
1. USE HOSE FC350-24
AIR-Q, SHOP TO SELECT
LENGTH

DRAWING BASED ON SD24.0010, REV. 2

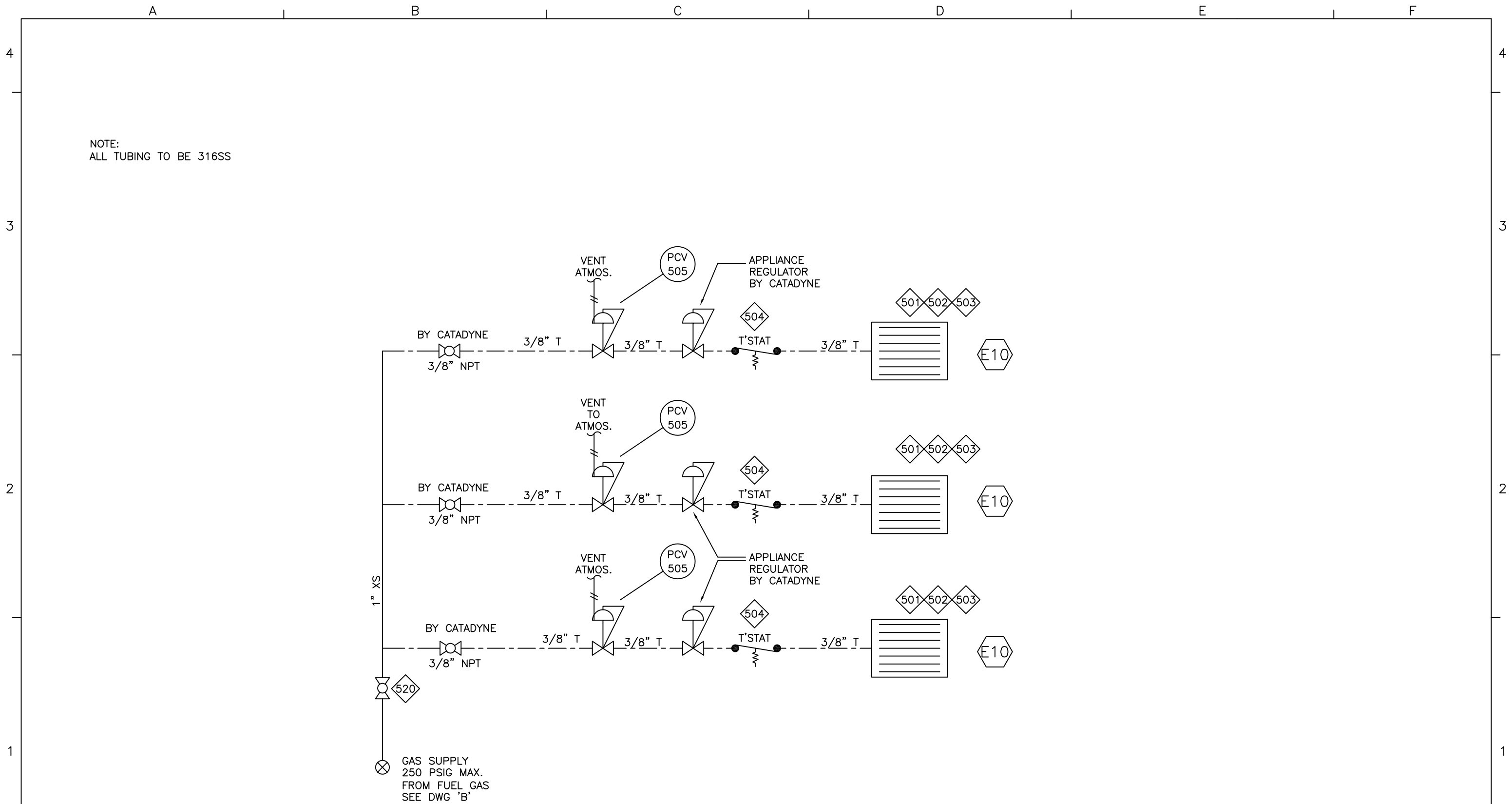


ENERFLEX www.enerflex.com	3	AS BUILT	DLL	01/09/12	CUSTOMER: NEXEN-WASCANA ENERGY LTD BRONSON NORTH, SASKATCHEWAN JOB No.: M01061	ORIG DWN BY: REO	TITLE: STANDARD SCHEMATIC EQUIPMENT AND CONTROLS WAUKASHA L7042GSI DWG-SFM01061C	SHT 1 OF 1	OP	#24
	2	CHANGED MOUNTING NOTE ON COOLER	JLL	01/07/26		DATE: 01/06/27				
	1	RELEASED FOR CONSTRUCTION	SJK	01/07/12		APPR'D BY: SJK				
	0	FOR APPROVAL	REO	01/06/27		DATE: 01/06/27				
	REV.	DESCRIPTION	BY	DATE						






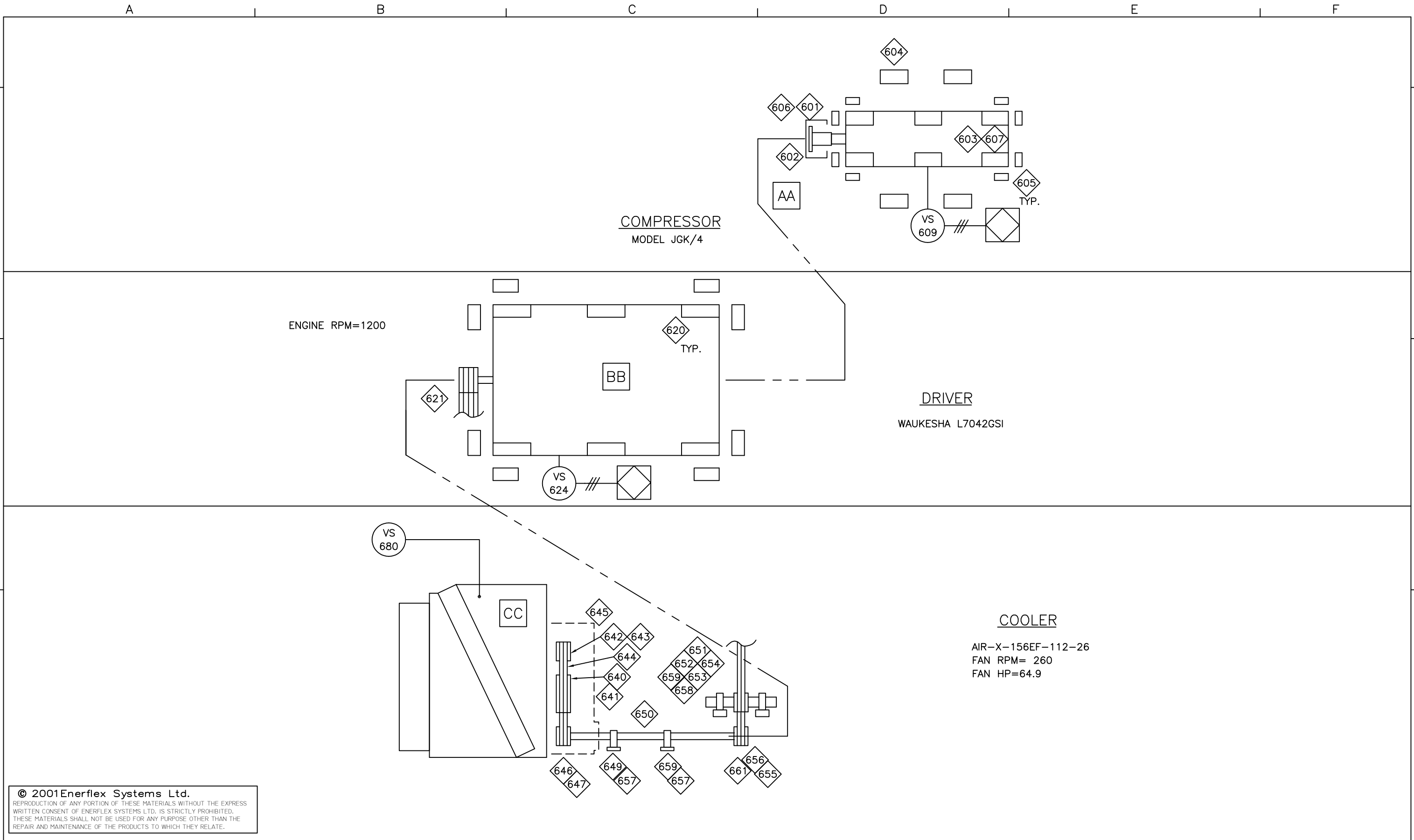
<div>ENERFLEX</div> <div>www.enerflex.com</div>	3	AS BUILT	DLL	01/09/12	<div>CUSTOMER:</div> <div>NEXEN-WASCANA ENERGY LTD BRONSON NORTH, SASKATCHEWAN</div>	<div>ORIG DWN BY: <u>REO</u></div> <div>DATE: <u>01/06/27</u></div> <div>APPR'D BY: <u>SJK</u></div> <div>DATE: <u>01/06/27</u></div>	<div>TITLE:</div> <div>STANDARD SCHEMATIC * EQUIPMENT AND CONTROLS WAUKASHA L7042GSI</div>			
	2	CHANGED SKID EDGE 30 AND 34	JLL	01/07/26						
	1	RELEASED FOR CONSTRUCTION	SJK	01/07/12						
	0	FOR APPROVAL	REO	01/06/27						
	REV.	DESCRIPTION	BY	DATE			JOB No.: M01061	DWG. SFM01061B	SHT 1 OF 1	OP #22




BUILDING EQUIPMENT AND CONTROLS

© 2001Enerflex Systems Ltd.
REPRODUCTION OF ANY PORTION OF THESE MATERIALS WITHOUT THE EXPRESS
WRITTEN CONSENT OF ENERFLEX SYSTEMS LTD. IS STRICTLY PROHIBITED.
THESE MATERIALS SHALL NOT BE USED FOR ANY PURPOSE OTHER THAN THE
REPAIR AND MAINTENANCE OF THE PRODUCTS TO WHICH THEY RELATE.

FILENAME:		ISSUE#:		 ENERFLEX SYSTEMS LTD.	CUSTOMER:		3		AS BUILT		DLL		01/09/12		ORIG DWN BY: <u>REO</u>		TITLE: STANDARD SCHEMATIC BUILDING HEATERS (CATADYNE)	
LAST DRAWING SAVE DATE:					NEXEN WASCANA ENERGY LTD BRONSON NORTH, SASKATCHEWAN		2		ADDED NOTE ON TUBING		JLL		01/07/26		DATE: <u>01/06/28</u>			
							1		RELEASED FOR CONSTRUCTION		SJK		01/07/12		APPR'D BY: <u>SJK</u>			
							0		FOR APPROVAL		REO		01/06/27		DATE: <u>01/06/28</u>		DWG. SFM01061E	
					JOB No.: M01061		Rev.		Description		By		Date					



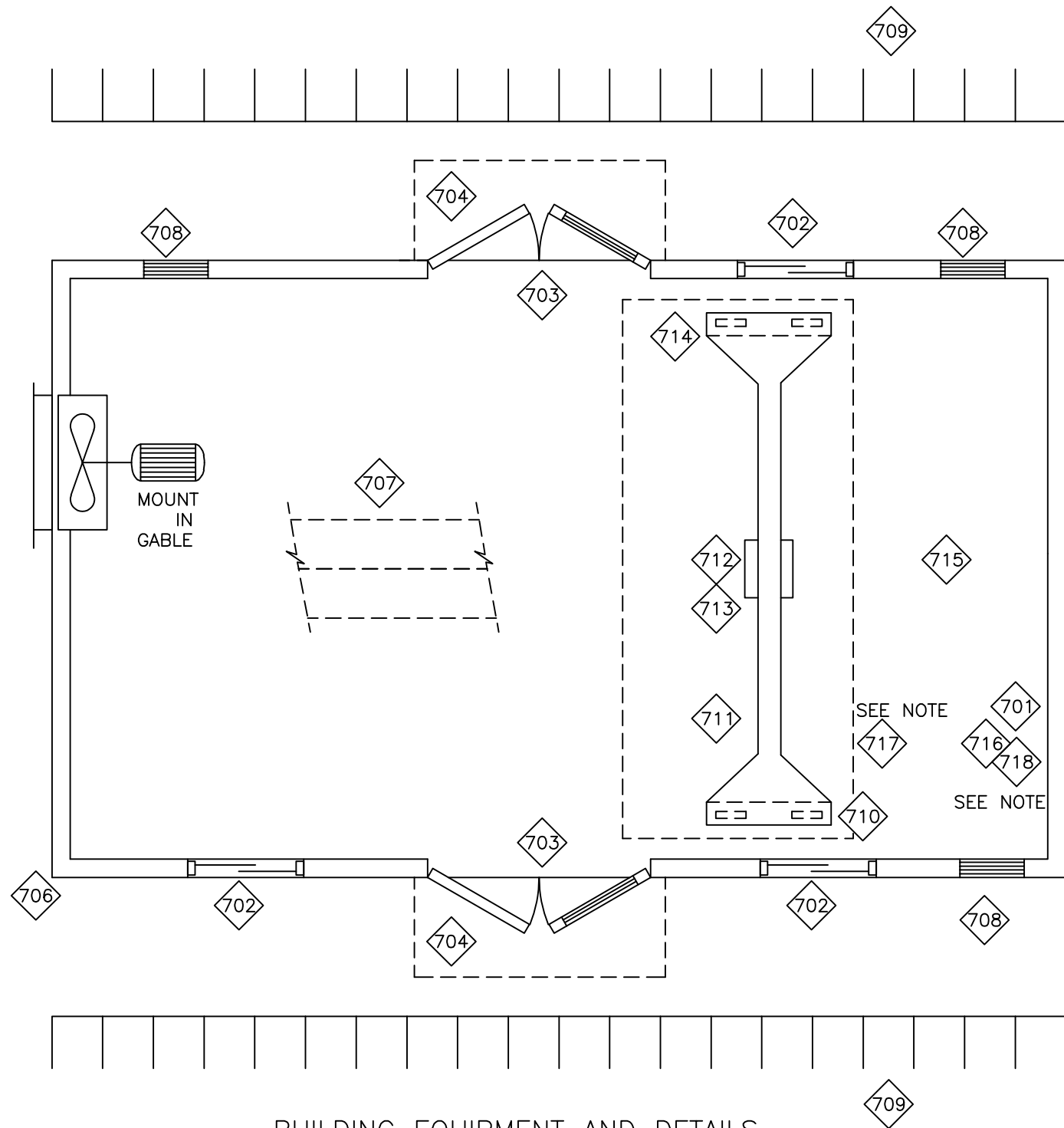
© 2001Enerflex Systems Ltd.
REPRODUCTION OF ANY PORTION OF THESE MATERIALS WITHOUT THE EXPRESS
WRITTEN CONSENT OF ENERFLEX SYSTEMS LTD. IS STRICTLY PROHIBITED.
THESE MATERIALS SHALL NOT BE USED FOR ANY PURPOSE OTHER THAN THE
REPAIR AND MAINTENANCE OF THE PRODUCTS TO WHICH THEY RELATE.

FILENAME: 14	ISSUE#:	 ENERFLEX SYSTEMS LTD.	CUSTOMER: NEXEN- WASCANA ENERGY LTD BRONSON NORTH, SASKATCHEWAN	3	AS BUILT	DLL	01/09	ORIG DWN BY: <u>REO</u>	TITLE: DRIVE TRAIN EQUIPMENT			
LAST DRAWING SAVE DATE:				2	MOVED VS FROM PF DRAWING	JLL	01/07/26	DATE: <u>01/06/28</u>				
				1	RELEASED FOR CONSTRUCTION	SJK	01/07/12	APPR'D BY: <u>SJK</u>	DWG. <u>SFM01061F</u>	OP <u>#28</u>		
				0	FOR APPROVAL	REO	01/06/27	DATE: <u>01/06/27</u>				
		JOB No.: <u>M01061</u>	Rev.	Description		By	Date					

REPRODUCTION OF ANY PORTION OF THESE MATERIALS WITHOUT THE EXPRESS WRITTEN CONSENT OF ENERFLEX SYSTEMS LTD. IS STRICTLY PROHIBITED. THESE MATERIALS SHALL NOT BE USED FOR ANY PURPOSE OTHER THAN THE REPAIR AND MAINTENANCE OF THE PRODUCTS TO WHICH THEY RELATE.

— SEE GENERAL ARRANGEMENT DRAWING FOR ACTUAL LOCATIONS OF BUILDING EQUIPMENT.

— FRONT HALF OF ROOF (ENGINE END)
TO BE MADE OF 2 REMOVABLE SECTION PANELS,
REQUIRING METAL WORK FOR ASSY./ DISSASSY.



EAVE HEIGHT:

EM SILVER GREY

13'-6"

EFX TO WIRE ALL END DEVICES TO PANEL.
ALL OTHER ELECTRICAL (FIRE & GAS DETECTION, EXCHANGE FAN, HP SODIUM LIGHTSETC.)
IS BY CUSTOMER



3	AS BUILT	DLL	01/09/12
2	ADDED NOTE ON BLDG ROOF PANELS	JLL	01/07/26
1	RELEASED FOR CONSTRUCTION	SJK	01/07/12
0	FOR APPROVAL	REO	01/06/27
REV.	DESCRIPTION	BY	DATE

JOB No.: M01061

TITLE: STANDARD SCHEMATIC
BUILDING EQUIP, ELECT. & PAINT

SHT	1	OF	1	OP	#72
-----	---	----	---	----	-----