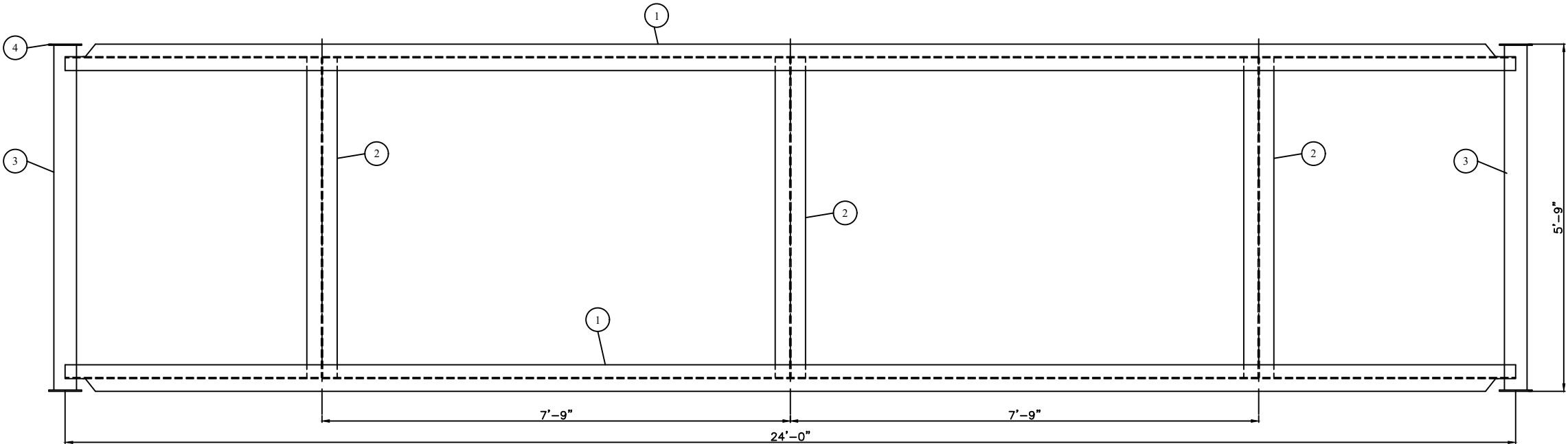


FILE PATH: MAINDATA\CAD\TANKS\A600-A699\A646-2

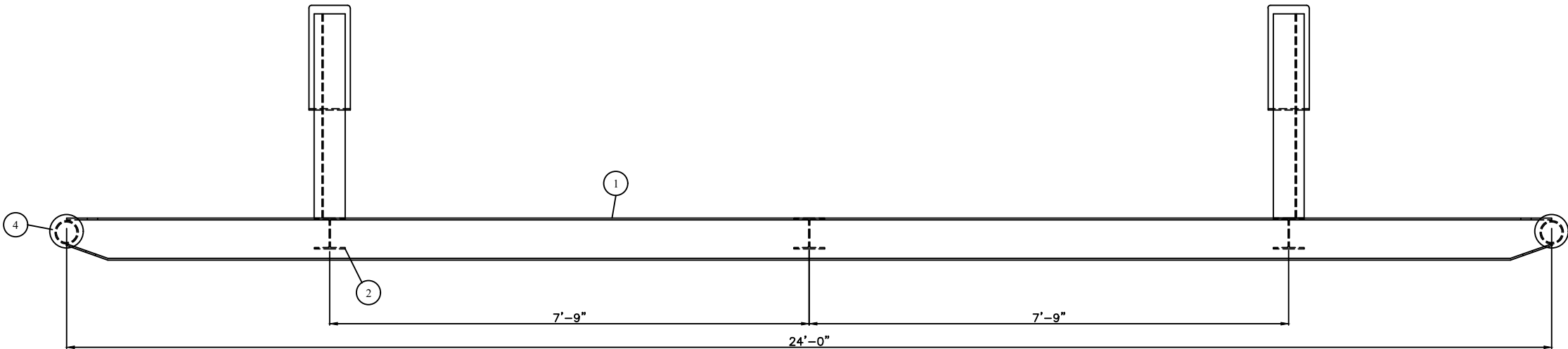
BILL OF MATERIALS					
ITEM	REQ'D	PART	DESCRIPTION	MATERIAL	WEIGHT
1	2	RUNNER	WF8@18# x 24'-0" LG (ROUGH CUT TO 289 3/4")	WF8@18#	870#
2	3	CROSSMEM	WF6@15# x 5'-3 1/2" LG (COPE TO SUIT)	SA-36	225#
3	2	PULL	4" STD PIPE x 5'-8 1/2" LG	SA-106-B	90#
4	4	PULLCAP	1/4" THK x 6 1/2" OD	SA-36	5#

GENERAL NOTES

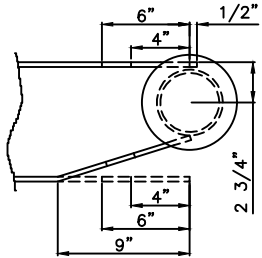
1. PAINT: ONE (1) COAT INDUSTRIAL ENAMEL
2. APPROXIMATE WEIGHT: 1200 LBS



TOP VIEW



ELEVATION VIEW



COPE DETAIL

REV. NO.	DATE	REVISION	BY	APP'D
A	02/10/03	ISSUED FOR APPROVAL	DSG	
0	02/25/03	ISSUED FOR FABRICATION	DSG	

BILTON
Welding & Manufacturing Ltd.

BOX 6106
3704 58 AVE.
INNISFAIR, AB
CANADA
403-227-7799
1-888-227-4923
FAX 227-7796

This drawing is property of BILTON WELDING & MANUFACTURING LTD., and is lent to the recipient for their confidential use only. In consideration of the loan of this drawing, the recipient promises and agrees that it shall not be used in any way detrimental to the interests of BILTON WELDING & MANUFACTURING LTD., that it shall be returned upon request, and that it shall not be reproduced, copied, lent, or otherwise disposed of, directly or indirectly, without the written consent of BILTON WELDING & MANUFACTURING LTD.

O'ROURKE ENGINEERING LTD

72" ID x 20'-0" S/S SINGLE WALL FLARE KNOCKOUT DRUM
SKID DETAIL

DATE: 02/10/03	SHEET: 2 OF 2	SIZE
SCALE: N.T.S.	JOB NO.:	D
DRAWN BY: DSG	PURCHASE ORDER: 3102-6448	
LOCATION: 03-13-54-22 W5M	DRAWING NO.:	REV.
APP'D BY:	CRN: N/A	A646-2 0