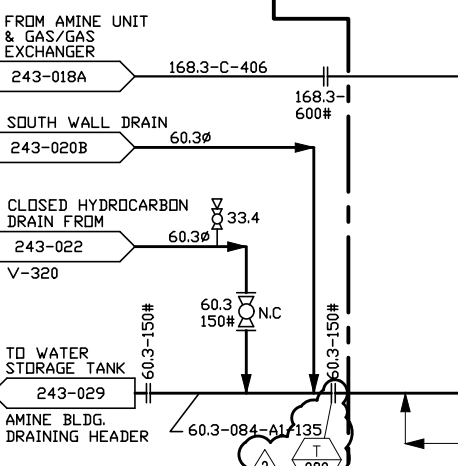
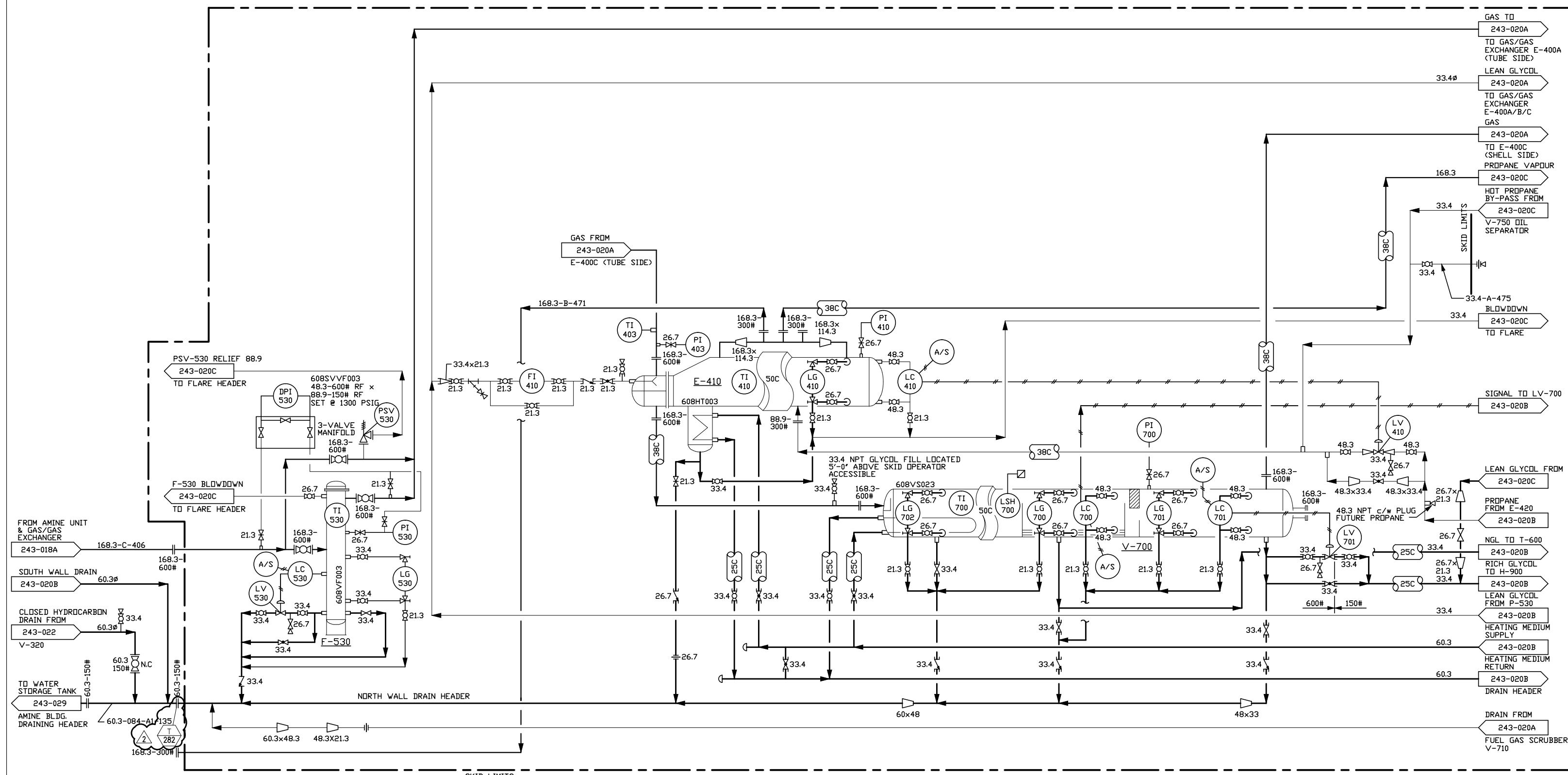


F-530
 SALES GAS LUBE OIL FILTER
 16" O.D. x 5'0" SM/SM
 1300 PSIG D.P. @ -20/150°F + 1/16" C.A.
 VERTICAL w/ (3)-APEX 0.3 MICRON
 ABSOLUTE MICROFIBRE COALESCING ELEMENTS

E-410
 CHILLER
 14/26-276 BKU TEMA "C"
 T.S. = 1300 PSIG D.P. @ -20/150°F + 1/16" C.A.
 S.S. = 250 PSIG D.P. @ -20/150°F + 1/16" C.A.
 DESIGN DUTY: 439,378 BTU/HR

V-700
 LOW TEMP. SEPARATOR
 30" I.D. x 8'-0" SM/SM
 1300 PSIG D.P. @ -20/150°F + 1/16" C.A.
 COND. BUCKET & DIXON PLATE MISTEX
 HORIZONTAL



NO.	DATE	REVISIONS	DRAWN	CHECK	DESIGN	APPR.
			DRAFTING		ENGINEERING	
2	18.06.04	ISSUED FOR DEMOLITION (TRIDYNE PROJECTS #2017089)	NS	SK	PK	KJ
1	11.02.11	ISSUED FOR AS BUILT	SA/TS	GDY/JW		
0	10.12.06	DRAWING 243-020A SPLIT INTO 20A & 20E	SA/TS	GDY/JW		
B	95.12.14	ISSUED FOR CLIENT REVIEW	BGS			

NO.	TITLE

PROFESSIONAL AND PERMIT STAMPS AFFIXED HEREUNDER SHALL APPLY ONLY TO REVISION(S) 2

DEMOLITION DRAWING

DENOTES ITEMS TO BE REMOVED

PROFESSIONAL AND PERMIT STAMPS

Tuxtlá GAS ENGINEERING LTD.

BY: RBC DATE: 93/06/11
 BY: GCR DATE: 93/07/20

TAQA NORTH

VALHALLA COMPRESSOR STATION
 REFRIGERATION PACKAGE
 PIPING & INSTRUMENTATION DIAGRAM D
 LSD 13-21-76-9 W6M

CLIENT FILE NO.	SCALE	TUXTLA DRAWING NUMBER	REV.
	NONE	243-020E-DEMO-2	2