



Visual Internal Inspection

TREATER 612550

NORTHERN - AB - KAKUT PLANT - 14-12-075-03W6

Report Number – VE - 20230012 - 2023-08-23



Visual Inspection Completed By:

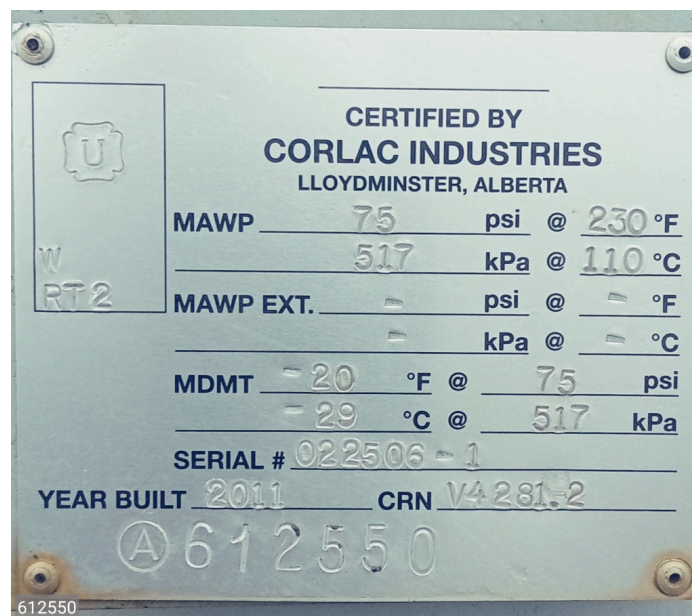
Glenn Allen - ASSET TRACKER - #26089

A handwritten signature in black ink, appearing to be 'GA' or similar initials.

LOCATION DETAILS			
DISTRICT	NORTHERN - AB	FIELD	KAKUT PLANT
SURFACE LOCATION	14-12-075-03W6	UWI	N/a
TRAIN / UNIT / PKG	PKG59750		



STATIC / NAMEPLATE INFORMATION			
OWNER ID#	612550	A #	A0612550
BC PV #	N/A	NB #	N/A
CRN #	V4281.2	MAN. SERIAL #	022506-1
EQUIPMENT TYPE	Horizontal Treater	EQUIPMENT DESCRIPTION	TREATER
MANUFACTURER	CORLAC	MANUFACTURED YEAR	2011
SHELL MAWP	75	SHELL MAWT	230
TUBE MAWP	0	TUBE MAWT	0



HORIZONTAL TREATER	
FIRETUBE OPENING CONDITION-	
Coating condition	GOOD
Gasket face condition	GOOD
Throat corrosion	N/A - COATED
Throat pitting	N/A - COATED
Throat mechanical damage	MINOR
Minor coating repairs on firetube manway throat.Areas recoated.	
HEATING SECTION – HEAD CONDITION	
Coating condition of head	GOOD
Head corrosion	N/A - COATED
Head pitting	
Head erosion	
Head mechanical damage	
No issues or concerns noted at time of inspection.	
HEATING SECTION – SHELL CONDITION	
Shell coating condition	GOOD
Shell corrosion	NO CONCERNS
Shell pitting	NO CONCERNS
Shell mechanical damage	NONE
Drain nozzle(s)	ACCEPTABLE
Minor coating holidays on bottom shell in the heating section. Areas recoated with Devoe 142 epoxy kit.	
HEATING SECTION – WELDMENT CONDITION	
Coating condition of weldments	GOOD
Weld profile	N/A - COATED
Weld corrosion	N/A - COATED
Weld pitting	N/A - COATED
Weld defects	N/A - COATED
Welds are coated and in good condition.	
HEATING SECTION – PIPING CONDITION	
Piping type	CARBON STEEL
Piping condition	
Coating condition	
Piping support and Hardware	SECURED
Drain piping	CLEAN / CLEAR
No issues or concerns noted	

HEATING SECTION – DOWNCOMER/SHROUD CONDITION	
Downcomer/Shroud condition	ACCEPTABLE
No issues or concerns noted.	
HEATING SECTION – FIRETUBE SUPPORT STRUCTURE CONDITION	
Firetube/gantry support condition	ACCEPTABLE
No issues or concerns.	
HEATING SECTION – SAND JETS CONDITION	
Sand Jet system condition	N/A
N/A	
HEATING SECTION – ANODE CONDITION	
Number of Anodes in heating section	6
Anode nozzle(s) condition	ACCEPTABLE
Average consumption	5%
No issues or concerns noted.	
SURGE SECTION – MANWAY CONDITION	
Coating condition	GOOD
Gasket face condition	GOOD
Throat corrosion	NO CONCERNS
Throat pitting	NO CONCERNS
Throat mechanical damage	NONE
No issues or concerns noted.	
SURGE SECTION – SHELL CONDITION	
Shell coating condition	GOOD
Shell corrosion	NO CONCERNS
Shell pitting	NO CONCERNS
Shell mechanical damage	NONE
Drain nozzle(s)	ACCEPTABLE
No issues or concerns noted.	
SURGE SECTION – WELDMENT CONDITION	
Coating condition of weldments	GOOD
Weld profile	FULL
Weld corrosion	NO CONCERNS
Weld pitting	NO CONCERNS
Weld defects	NO CONCERNS
No issues or concerns noted.	

SURGE SECTION – INTERNAL PIPING CONDITION	
Piping type	CARBON STEEL
Piping condition	
Coating condition	
Piping support and Hardware	SECURED
Drain piping	CLEAN / CLEAR
No issues or concerns noted.	
SURGE SECTION – WEIR PLATE CONDITION	
Weir Plate condition	ACCEPTABLE
SURGE SECTION – ANODE CONDITION	
Number of Anodes in surge section	0
Anode nozzle(s) condition	N/A
Average consumption as percentage	
SURGE SECTION – ADDITIONAL ITEMS	
No issues or concerns noted.	
SETTLING SECTION – MANWAY CONDITION	
Coating condition	GOOD
Gasket face condition	GOOD
Throat corrosion	NO CONCERNS
Throat pitting	NO CONCERNS
Throat mechanical damage	NONE
No issues or concerns noted.	
SETTLING SECTION – HEAD CONDITION	
Coating condition of head	GOOD
Head corrosion	N/A - COATED
Head pitting	
Head erosion	
Head mechanical damage	
\$HORZ_TREATER_INT_HEAD_COMMENTS_6	
SETTLING SECTION – SHELL CONDITION	
Shell coating condition	GOOD
Shell corrosion	NO CONCERNS
Shell pitting	NO CONCERNS
Drain nozzle(s)	ACCEPTABLE

No issues or concerns noted	
SETTLING SECTION – WELDMENT CONDITION	
Coating condition of weldments	GOOD
Weld profile	N/A - COATED
Weld corrosion	N/A - COATED
Weld pitting	N/A - COATED
Weld defects	N/A - COATED
No issues or concerns noted	
SETTLING SECTION – PIPING CONDITION	
Piping type	
Piping condition	
Coating condition	
Piping support and Hardware	
Drain piping	
SETTLING SECTION – OIL BOX CONDITION	
Oil Box condition	ACCEPTABLE
No issues or concerns noted.	
SETTLING SECTION – ELECTRICAL GRID CONDITION	
Electrical grid condition	ACCEPTABLE
Some minor deflection on the stainless mesh plates.	
SETTLING SECTION – SPREADER SYSTEM CONDITION	
Spreader system condition	N/A
SETTLING SECTION – ANODE CONDITION	
Number of Anodes in surge section	0
Anode nozzle(s) condition	N/A
Average consumption as percentage	
SETTLING SECTION – ADDITIONAL ITEMS	
No issues or concerns on this section at time of inspection.	

FIRETUBE			
IDENTIFICATION			
Firetube ID number	1 OF 1	Firetube Status	IN SERVICE
Tube OD		Tube Nominal	0.500
Tube Return type	MITRE	External Coating	NOT COATED
PREPARATION			
Pre-clean condition	DEPOSITS	Cleaning Type	WASHED
Preparation type	ABRASIVE BLAST	Post-clean condition	
INSPECTION			
Hotspots	NO	Mechanical damage	NO
Tube Corrosion	NO	Tubesheet Corrosion	NO
Weld Condition	GOOD	Cracking	NO
UT results	NO ISSUES	NDE Company	ASSET TRACKER
MT Results	NO ISSUES	NDE report number	LRE-2023-NDE-KAKUT
No issues or concerns noted at time of inspection.			

NDE DETAILS	
NDE Performed	YES
NDE Type	ULTRASONIC TESTING
NDE Results	ACCEPTABLE
NDE Company	ASSET TRACKER
NDE Report Number	LRE-2023-NDE-KAKUT
No issues or concerns noted at time of inspection.	

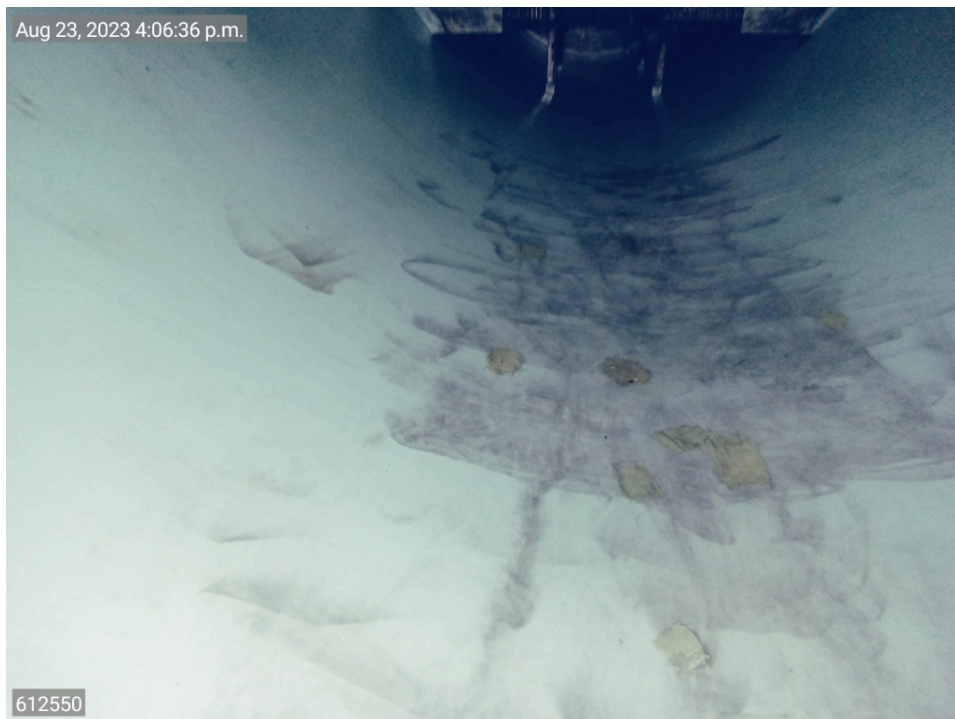


Aug 23, 2023 4:06:03 p.m.



Aug 23, 2023 4:06:18 p.m.





Aug 23, 2023 4:06:58 p.m.



Aug 23, 2023 4:07:22 p.m.







Aug 23, 2023 4:08:47 p.m.



Aug 23, 2023 4:09:06 p.m.







Aug 23, 2023 4:10:02 p.m.



612550

Aug 25, 2023 9:24:07 a.m.



612550



INSPECTION SUMMARY

NON-CONFORMANCES & CORRECTIVE ACTIONS



No concerns noted

PREPARATORY WORK REQUIRED

Cleaning requirements, scaffold, ladder, man basket, scissor lift etc. to facilitate proper inspection of equipment
Scaffolding at Manway

RECOMMENDATIONS FOR NEXT INSPECTION

Recommendations for inspection techniques and the items requiring special attention or caution for the next inspection
Perform same job scope as was conducted during this inspection period.

Equipment suitable for service	Yes	Repairs Required	No
Inspection Type	Visual Internal	Date	2023-08-25
Field Inspector Name	Glenn Allen	Certification	#000380 #26089
Field Inspector Signature			
Integrity Review			
Area Integrity Supervisor	Doug Gohmann	Certification	000636
Coating repairs completed during outage.			
Integrity Supervisor Signature			
Chief Inspector Review			
Chief Inspector	Wayne Derwanz	Certification	000026
Assigned Interval	60.0	Months	Next Inspection 7/30/2028
Chief Inspector Signature	