



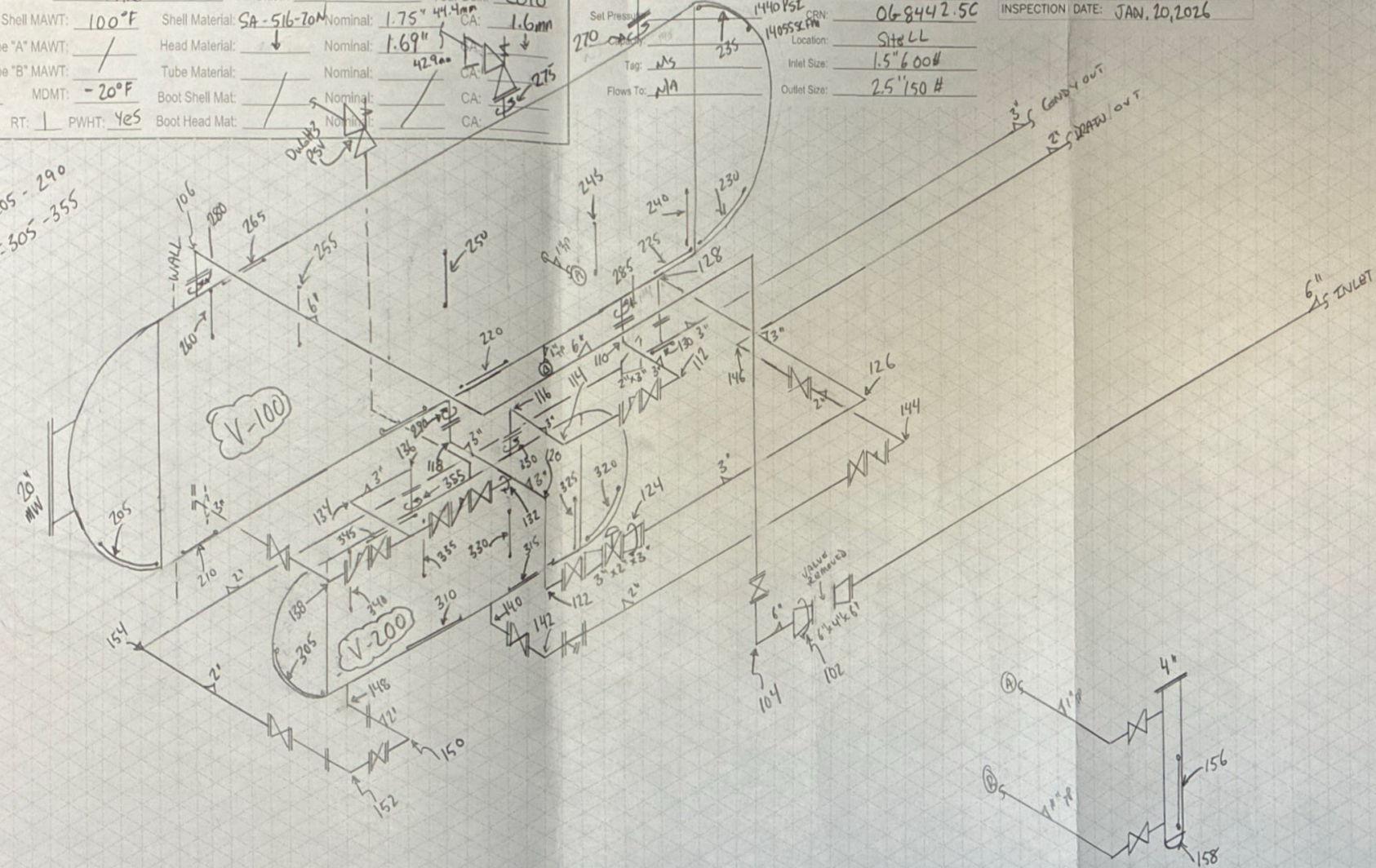
Customer: FUELLED Description: HOZ. SEPARATOR
 Facility: WEST GUNDERSON Location: 13-09-64-1306 (CNRL) Bette 2600
 Reg A#: 0595729 Serial #: 10-062-HS Drawing #: 2
 Manufacturer: TARPON Unit #: V-100 Year Built: 2010
 Shell MAWP: 1440 PSI Shell MAWT: 100°F Shell Material: SA-516-70M Nominal: 1.75" CA: 1.6mm
 Tube "A" MAWP: / Tube "A" MAWT: / Head Material: / Nominal: 1.69" CA: /
 Tube "B" MAWP: / Tube "B" MAWT: / Tube Material: / Nominal: / CA: /
 Size: 48" x 20' Manway: 20" MDMT: -20°F Boot Shell Mat: / Nominal: / CA: /
 Insulated: SOUTH HEAD Stamp: U RT: 1 PWHT: Yes Boot Head Mat: / Nominal: / CA: /

PSV DATA
 FABRICATED BY: UNIFIED
 Model: 26GA13-120 Service Date: 2-AUG-19
 Serial: 549186-3-A10 Code Stamp: UV
 Set Pressure: 1440 PSI CRN: 068442.5C
 Location: Site LL
 Tag: MS Inlet Size: 1.5" 600#
 Flows To: NA Outlet Size: 2.5" 150#

COLUMN / BOOT / GAS DOME SIZE:
 INSPECTION DATE: JAN. 20, 2026



CML Legend
PSVs = 102 - 158
V-100 SHELLS/NOZZLES = 205 - 290
V-200 SHELLS/NOZZLES = 305 - 355





Client / LSD: Fueled / 13-09-64-13w6m

A# / SN# / NB# / Unit#: 0595729

Vessel Description: v100/200 piping

Inspection Date: Jan 20/2026

Drawing #: 1

Data Sheet

Point #	Description	Minimum Thickness	Average Thickness	Nominal Thickness	CA	Flag Thickness	Comments
102	4" X 6" RED XS	9.6	10.6	8.6		7.5	@4" side
04	6" 90° XS	10.4	10.8	11.0		9.6	LAPS
06	6" 90° XS	12.0	12.6	11.0		9.6	
08	6" 90° XS	10.3	10.7	11.0		9.6	
10	3" 90° XS	7.5	8.0	7.6		6.6	
12	3" 90° XS	7.6	8.0				
14	3" 90° XS	7.3	7.7				
16	3" 90° XS	7.1	7.6				
18	3" 90° XS	7.6	8.0				
20	3" 90° XS	7.4	7.8				
22	3" 90° XS	7.4	7.8				
24	2" X 3" RED XS	6.4	7.8	5.5		4.8	@2" side
26	3" 90° XS	7.9	8.4	7.6		6.6	
28	3" 90° XS	8.0	8.5				
30	3" X 3" BOT XS	9.2	9.9				
32	3" X 3" NOT XS	7.1	7.7				@6:00
34	3" 90° XS	7.0	7.6				
36	3" 90° XS	6.2	6.8				Flagged
38	3" 90° XS	7.0	7.6				
40	2" 90° NOZ X XS	9.3	10.3	11.1			@mid Elbow 2" 90° Drain
42	2" 90° XS	5.2	5.5	5.5		4.8	
44	2" 90° XS	5.5	5.8				
46	2" 90° S160	8.1	8.9	8.7		7.6	
48	2" 90° NOZ X XS	9.4	10.7	11.1			@mid Elbow 2" 90° Drain
50	2" 90° XS	4.8	5.3	5.5		4.8	Flagged
52	2" 90° XS	5.4	5.7				
54	2" 90° XS	4.7	5.1				Flagged
56	4" Column Band XS	7.9	8.3	8.6		7.5	
58	4" E.C XS	7.4	8.0				Flagged



Client / LSD: Fueled / 13-09-64-13w6m

(A#) SN# / NB# / Unit#: 0595729

Vessel Description: V-100 Shells + Nozzles

Inspection Date: Jan 20 / 2026

Drawing #: 2

Data Sheet

Point #	Description	Minimum Thickness	Average Thickness	Nominal Thickness	CA	Flag Thickness	Comments
205	South Head	/	/	42.9	1.6	41.3	No access due to insulation
210	Bottom Shell	45.2	45.4	44.4		42.8	
215		44.8	45.1				
220		45.3	45.4				
225		45.0	45.4				
230	Lower North Head	44.5	44.9	42.9		41.3	
235	Upper North Head	44.2	45.2				
240	Lower Shell	44.9	45.3	44.4		42.8	
245	Lower Shell	45.5	45.6				
250	Mid Shell	45.3	45.5				
255	Upper Shell	45.6	45.8				
260	Upper Shell	45.4	45.6				
265	Top Shell	45.7	45.8				
270	6" NOZ Circ	36.1	36.3	N/S	1.6		6" 600# SCH unknown
275	1.5" NOZ Circ	16.7	17.2				1.5" 600#
280	6" NOZ Circ	36.2	36.5				6" 600#
285	3" NOZ Circ	31.3	31.7				3" 600#
290	3" NOZ Circ	30.9	31.3				3" 600#