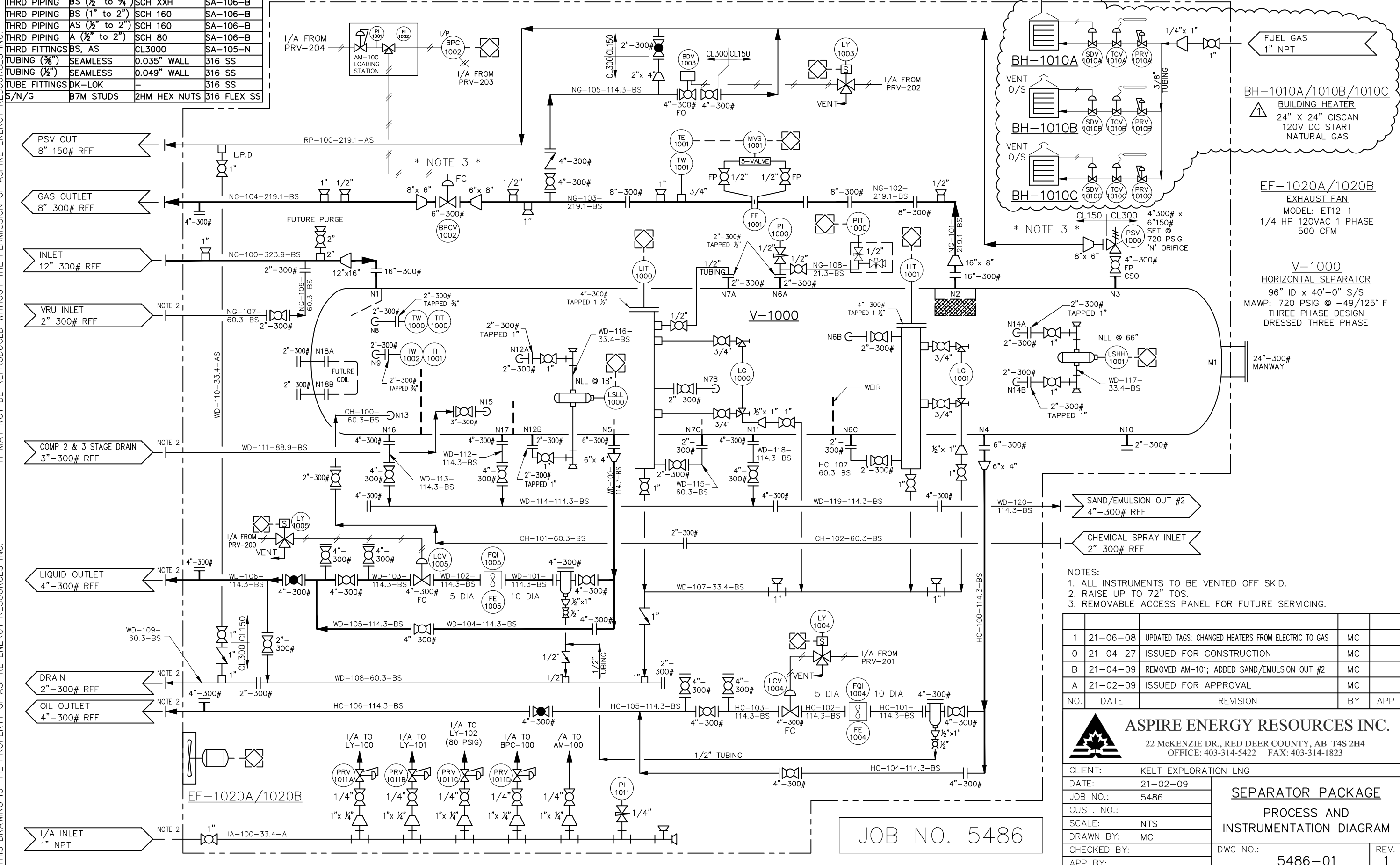


THIS DRAWING IS THE PROPERTY OF ASPIRE ENERGY RESOURCES INC. IT MAY NOT BE REPRODUCED WITHOUT THE PERMISSION OF ASPIRE ENERGY RESOURCES INC.

| PIPING SPEC'S | | | |
|---------------|-------------------|--------------|-------------|
| THRD PIPING | BS (1/2" to 3/4") | SCH XXH | SA-106-B |
| THRD PIPING | BS (1" to 2") | SCH 160 | SA-106-B |
| THRD PIPING | AS (1/2" to 2") | SCH 160 | SA-106-B |
| THRD PIPING | A (1/2" to 2") | SCH 80 | SA-106-B |
| THRD FITTINGS | BS, AS | CL3000 | SA-105-N |
| TUBING (3/8") | SEAMLESS | 0.035" WALL | 316 SS |
| TUBING (1/2") | SEAMLESS | 0.049" WALL | 316 SS |
| TUBE FITTINGS | DK-LOK | | 316 SS |
| S/N/G | B7M STUDS | 2HM HEX NUTS | 316 FLEX SS |

SKID LIMITS



- NOTES:
1. ALL INSTRUMENTS TO BE VENTED OFF SKID.
 2. RAISE UP TO 72" TOS.
 3. REMOVABLE ACCESS PANEL FOR FUTURE SERVICING.

| NO. | DATE | REVISION | BY | APP |
|-----|----------|----------------------------------------------------|----|-----|
| 1 | 21-06-08 | UPDATED TAGS; CHANGED HEATERS FROM ELECTRIC TO GAS | MC | |
| 0 | 21-04-27 | ISSUED FOR CONSTRUCTION | MC | |
| B | 21-04-09 | REMOVED AM-101; ADDED SAND/EMULSION OUT #2 | MC | |
| A | 21-02-09 | ISSUED FOR APPROVAL | MC | |

ASPIRE ENERGY RESOURCES INC.
 22 MCKENZIE DR., RED DEER COUNTY, AB T4S 2H4
 OFFICE: 403-314-5422 FAX: 403-314-1823

| | | |
|-------------|----------------------|--|
| CLIENT: | KELT EXPLORATION LNG | |
| DATE: | 21-02-09 | |
| JOB NO.: | 5486 | |
| CUST. NO.: | | |
| SCALE: | NTS | |
| DRAWN BY: | MC | |
| CHECKED BY: | | |
| APP BY: | | |

SEPARATOR PACKAGE
PROCESS AND INSTRUMENTATION DIAGRAM
 DWG NO.: 5486-01 REV. 1

JOB NO. 5486