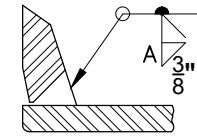


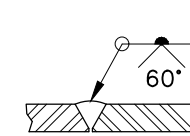
THIS DRAWING IS THE PROPERTY OF ASPIRE ENERGY RESOURCES INC. IT MAY NOT BE REPRODUCED WITHOUT THE PERMISSION OF ASPIRE ENERGY RESOURCES INC.

**GENERAL NOTES:**

1. DESIGNED TO ASME B31.3 2016 EDITION
2. DESIGN PRESSURE: 285 PSI
3. PRESSURE TEST: 428 PSI
4. RADIOGRAPHY: 100 %
5. PWHT: NO
6. HARDNESS TESTING: 10 %



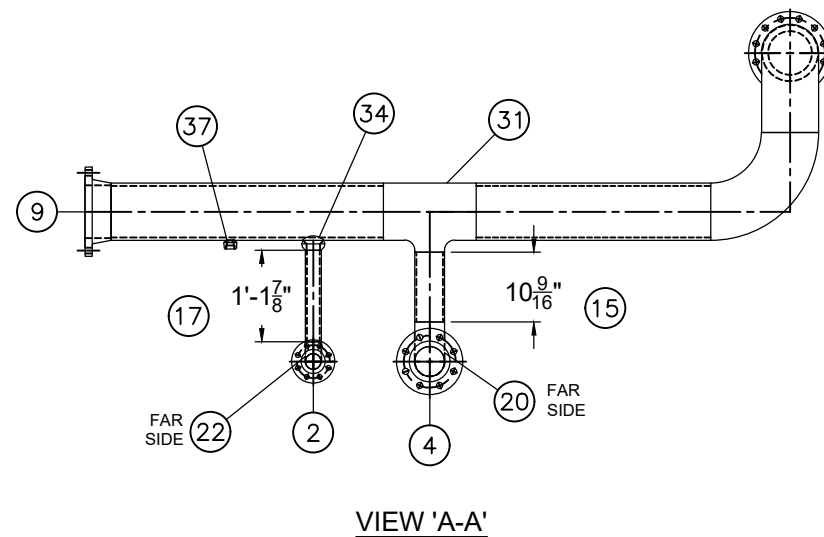
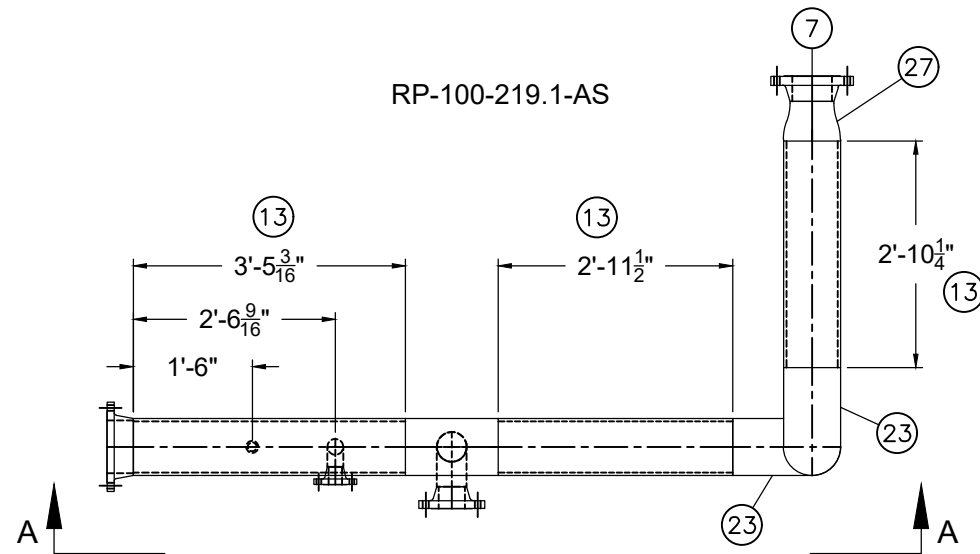
WELD DETAIL 1  
WPS: AER-1,6



WELD DETAIL 2  
WPS: AER-1,6

**BILL OF MATERIALS**

| TAG | QTY. | DESCRIPTION                     | MATERIAL   | HEAT NUMBERS |
|-----|------|---------------------------------|------------|--------------|
| 1   |      |                                 |            |              |
| 2   | 1    | 2" 300# ANSI RFWN FLANGE SCH XH | SA-105-N   |              |
| 3   |      |                                 |            |              |
| 4   | 1    | 4" 300# ANSI RFWN FLANGE SCH 40 | SA-105-N   |              |
| 5   |      |                                 |            |              |
| 6   |      |                                 |            |              |
| 7   | 1    | 6" 150# ANSI RFWN FLANGE SCH 40 | SA-105-N   |              |
| 8   |      |                                 |            |              |
| 9   | 1    | 8" 150# ANSI RFWN FLANGE SCH 40 | SA-105-N   |              |
| 10  |      |                                 |            |              |
| 11  |      |                                 |            |              |
| 12  |      |                                 |            |              |
| 13  | -    | 8" SCH 40 SMLS PIPE             | SA-106-B   |              |
| 14  |      |                                 |            |              |
| 15  | -    | 4" SCH 40 SMLS PIPE             | SA-106-B   |              |
| 16  |      |                                 |            |              |
| 17  | -    | 2" SCH XH SMLS PIPE             | SA-106-B   |              |
| 18  |      |                                 |            |              |
| 19  |      |                                 |            |              |
| 20  | 1    | 4" 90° LR ELBOW SCH 40          | SA-234-WPB |              |
| 21  |      |                                 |            |              |
| 22  | 1    | 2" 90° LR ELBOW SCH XH          | SA-234-WPB |              |
| 23  | 2    | 8" 90° LR ELBOW SCH 40          | SA-234-WPB |              |
| 24  |      |                                 |            |              |
| 25  |      |                                 |            |              |
| 26  |      |                                 |            |              |
| 27  | 1    | 8" x 6" SCH 40 CONC REDUCER     | SA-234-WPB |              |
| 28  |      |                                 |            |              |
| 29  |      |                                 |            |              |
| 30  |      |                                 |            |              |
| 31  | 1    | 8" x 4" REDUCING TEE SCH 40     | SA-234-WPB |              |
| 32  |      |                                 |            |              |
| 33  |      |                                 |            |              |
| 34  | 1    | 2" SCH 80 WOL 6"-8" RUN         | SA-105-N   |              |
| 35  |      |                                 |            |              |
| 36  |      |                                 |            |              |
| 37  | 1    | 1" 3000# TOL                    | SA-105-N   |              |
| 38  |      |                                 |            |              |
| 39  |      |                                 |            |              |
| 40  |      |                                 |            |              |



JOB NO. 5486

| 0           | 21-04-26 | ISSUED FOR CONSTRUCTION   | MC |        |
|-------------|----------|---|----|--------|
| NO.         | DATE     | REVISION  | BY | APP    |
|             |          | <b>ASPIRE ENERGY RESOURCES INC.</b><br>22 MCKENZIE DR., RED DEER COUNTY, AB T4S 2H4<br>OFFICE: 403-314-5422 FAX: 403-314-1823 |    |        |
| CLIENT:     |          | KELT EXPLORATION LNG  |    |        |
| DATE:       |          | 21-04-26  |    |        |
| JOB NO.:    |          | 5486  |    |        |
| CUST NO.:   |          | SEPARATOR PACKAGE   |    |        |
| SCALE:      |          | PIPING PLAN VIEW  |    |        |
| DRAWN BY:   |          | MC  |    |        |
| CHECKED BY: |          | DWG NO.:  |    |        |
| APP BY:     |          | 5486-04C  |    | REV. 0 |