

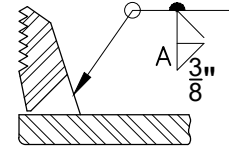
THIS DRAWING IS THE PROPERTY OF ASPIRE ENERGY RESOURCES INC. IT MAY NOT BE REPRODUCED WITHOUT THE PERMISSION OF ASPIRE ENERGY RESOURCES INC.

CONNECTION SCHEDULE

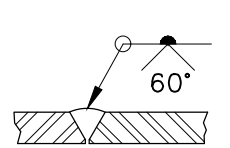
MARK	SIZE	SCH	CLASS	TYPE	SERVICE	WELD	A	B	C	ITEM NO'S
N1A-D	2"	80	300#	RFWN	BRIDLE CONNECTIONS	1,2	3/8"	-	-	2
N2A-D	4"	80	300#	RFWN	INSPECTION	2	3/8"	-	-	1
C1A-D	3/4"	-	6000#	TOL	LEVEL GAUGE	1	3/8"	-	-	13
C2A/B	1"	-	6000#	TOL	DRAIN	1	3/8"	-	-	14
C3	1/2"	-	6000#	TOL	PURGE GAS	1	3/8"	-	-	12

BILL OF MATERIALS

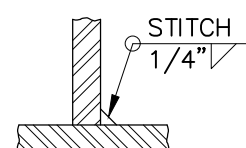
TAG	QTY.	DESCRIPTION	MATERIAL	HEAT NUMBERS
1	2	4" 300# ANSI RFWN FLANGE SCH 80 C/W BLIND	SA-105-N	
2	4	2" 300# ANSI RFWN FLANGE SCH 80	SA-105-N	
3	1	4" SCH 80 SMLS PIPE x 2'-9 7/16" LG.	SA-106-B	
4	1	4" SCH 80 SMLS PIPE x 2'-8 3/8" LG.	SA-106-B	
5	1	4" SCH 80 SMLS PIPE x 1'-10 1/2" LG.	SA-106-B	
6	1	4" SCH 80 SMLS PIPE x 4'-1 3/4" LG.	SA-106-B	
7	1	2" SCH 80 SMLS PIPE x 1'-2 1/2" LG.	SA-106-B	
8	1	2" SCH 80 SMLS PIPE x 8" LG.	SA-106-B	
9	1	2" SCH 80 SMLS PIPE x 6 1/2" LG.	SA-106-B	
10	2	4" 90° LR ELBOW SCH 80	SA-234-WPB	
11	2	2" 90° LR ELBOW SCH 80	SA-234-WPB	
12	1	1/2" 6000# TOL, 4" RUN	SA-105-N	
13	4	3/4" 6000# TOL, 4" RUN	SA-105-N	
14	2	1" 6000# ELBOLET, 4" RUN	SA-105-N	
15	2	4" x 2" REDUCING TEE SCH 80	SA-234-WPB	
16	2	4" x 2" SCH 80 CONC REDUCER	SA-234-WPB	
17	2	STANDARD NAME PLATE AND BRACKET	316SS/SA36	
18				



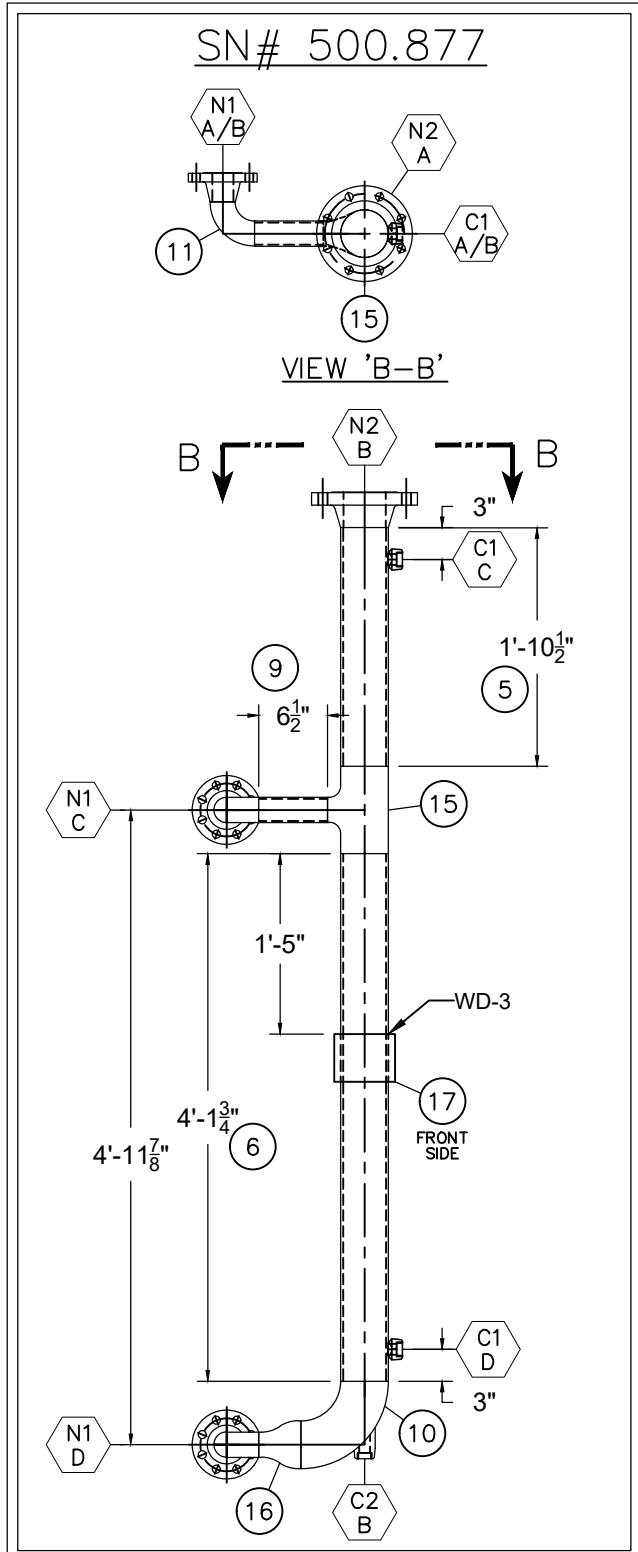
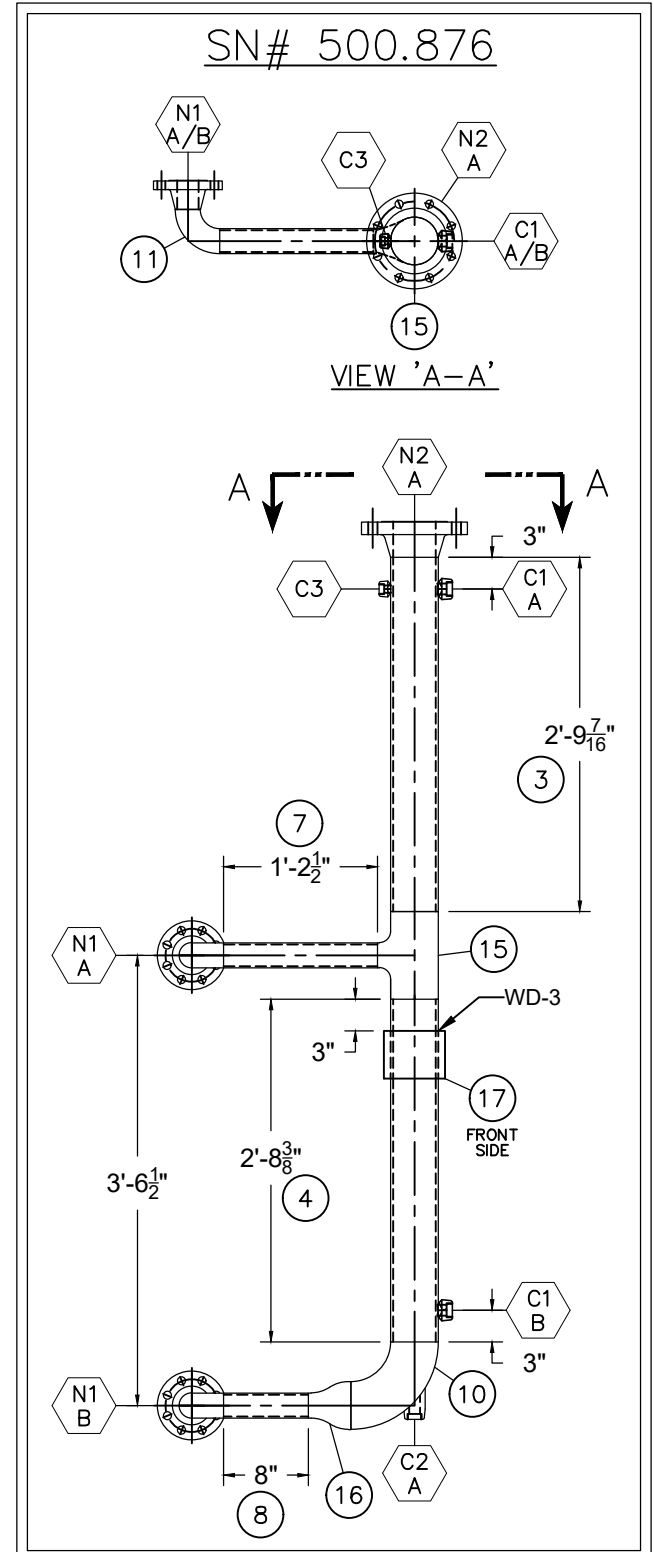
WELD DETAIL 1
WPS: AER-1,6



WELD DETAIL 2
WPS: AER-1,6



WELD DETAIL 3
WPS: AER-1,6



DESIGN NOTES:

- DESIGNED TO ASME SECTION VIII, DIV 1, 2019 ED.
- DESIGN PRESSURE: 740 PSI
- PRESSURE TEST: 962 PSI
- RADIOGRAPHY: 100%
- PWHT: NO
- HARDNESS TESTING: 10%

GENERAL NOTES

- QUALITY CONTROL PROGRAM NUMBER: AQP-1494
- WELDING PROCEDURE REGISTRATION NUMBER: WP-2255.2
- CAPACITY: 0.70 FT3/EA
- EXPOSED INSIDE EDGES OF NOZZLES OR OPENINGS SHALL BE ROUNDED PER UG-76c.
- SURFACE PREPARATION: HAND TOOL CLEAN (MIN)
- PRIME AND PAINT: AS PER CLIENT SPECIFICATIONS
- ALL BOLT HOLES TO STRADDLE CENTERLINES.
- CLEAN AND COVER ALL OPENINGS FOR SHIPMENT.
- USE WELDING PROCEDURE AER-1 FOR ALL TACK WELDS.
- CRN: OH17673.2
- CRN DRAWING: 5197-1 REV 1, 5197-2 REV 1
- CRN CALCULATIONS: 04-5197-R1

JOB NO. 5486

A	21-06-02	ISSUED FOR APPROVAL	MC	
NO.	DATE	REVISION	BY	APP
ASPIRE ENERGY RESOURCES INC. 22 MCKENZIE DR., RED DEER COUNTY, AB T4S 2H4 OFFICE: 403-314-5422 FAX: 403-314-1823				
CLIENT:	KELT EXPLORATION LNG			
DATE:	21-06-02			
JOB NO.:	5486			
CUST NO.:	SEPARATOR PACKAGE			
SCALE:	4 1/2" OD BRIDLES			
DRAWN BY:	MC			
CHECKED BY:	DWG NO.:			
APP BY:	5486-06			
				REV. 0