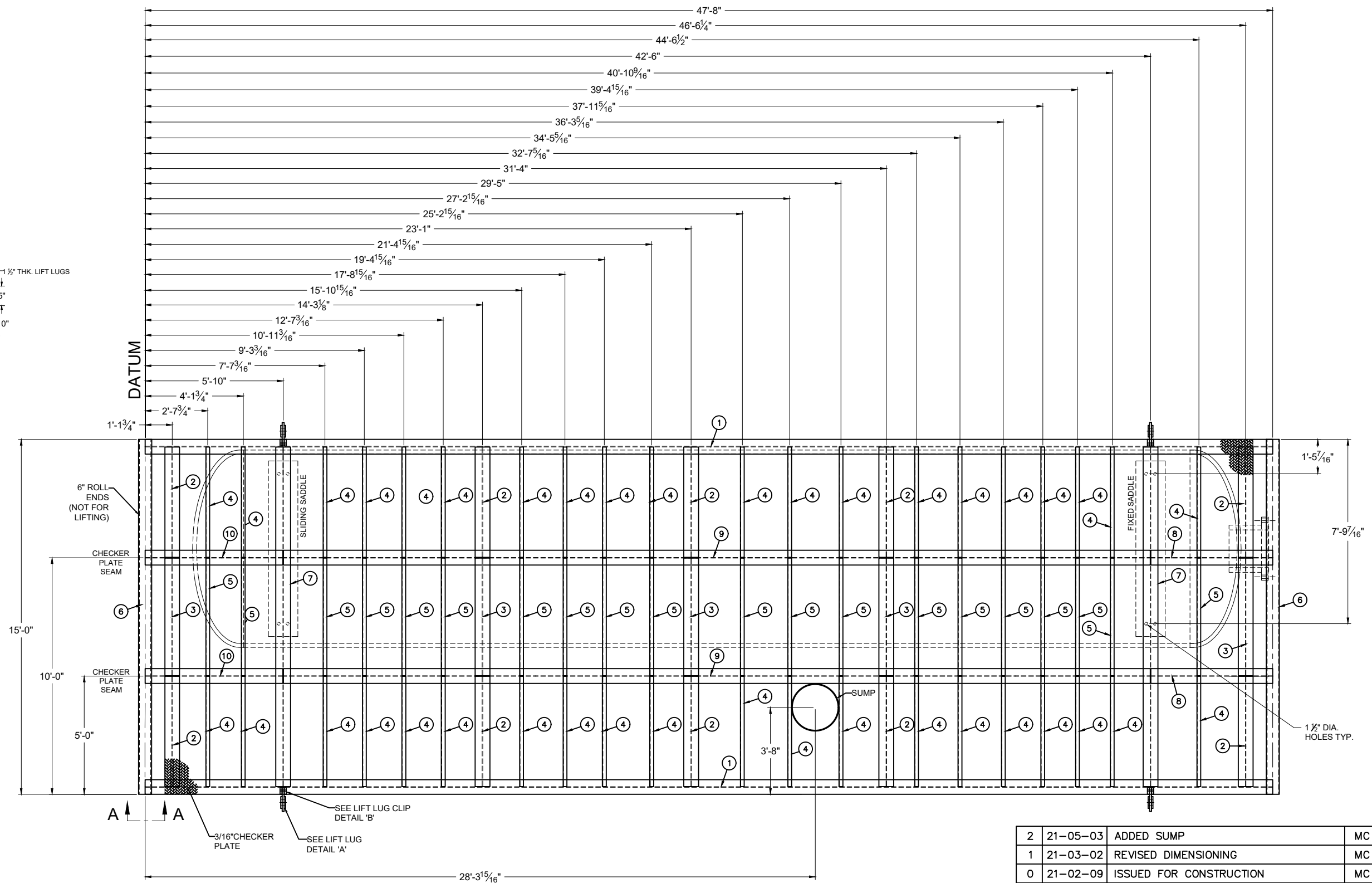
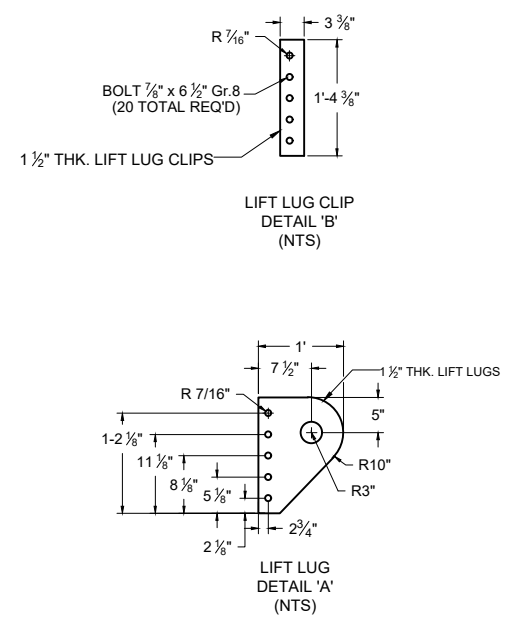
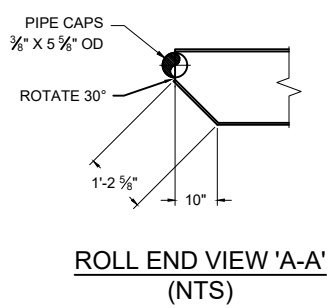


THIS DRAWING IS THE PROPERTY OF ASPIRE ENERGY RESOURCES INC. IT MAY NOT BE REPRODUCED WITHOUT THE PERMISSION OF ASPIRE ENERGY RESOURCES INC.



ITEM	QTY	MEMBER DESIGNATION	LENGTH (ft)	WEIGHT (Lb)	WEIGHT(Kg)
1	2	W18x45#	47'-8"	4320.00	1959.52
2	10	W18x45#	4'-7 7/8"	2100.00	952.54
3	5	W18x45#	4'-11 5/8"	1117.96	507.10
4	40	C6x8.2	4'-7 7/8"	1261.128	572.03
5	20	C6x8.2	4'-11 5/8"	774.66	351.37
6	2	PIPE- 6" SCH 160	15'-7"	1449.60	657.52
7	2	W18x45#	14'-4 3/16"	1305.00	591.93
8	2	W18x45#	5'-1 13/16"	390.00	176.90
9	2	W18x45#	36'-7 11/16"	3380.00	1533.14
10	2	W18x45#	5'-9 13/16"	460.00	208.65
Total Weight:				16630.52	7543.48



JOB NO. 5486

- GENERAL NOTES:**
- TOTAL WEIGHT OF SKID 26,350 LBS (11,952 KG)
 - CHECKER PLATE SEAMS TO BE SEAL WELDED CONTINUOUSLY ON TOP SIDE.
 - SKID FRAMING SHALL BE OF SOLID WELDED CONSTRUCTION, 6MM CONTINUOUS FILLET WELDS.
 - COPE ALL FRAMING INTO ONE ANOTHER.
 - ROLL ENDS ARE FOR PULLING ONLY (NOT FOR LIFTING).

NO.	DATE	REVISION	BY	APP
2	21-05-03	ADDED SUMP	MC	
1	21-03-02	REVISED DIMENSIONING	MC	
0	21-02-09	ISSUED FOR CONSTRUCTION	MC	

ASPIRE ENERGY RESOURCES INC.
 22 MCKENZIE DR., RED DEER COUNTY, AB T4S 2H4
 OFFICE: 403-314-5422 FAX: 403-314-1823

CLIENT: KELT EXPLORATION NGL		SEPARATOR PACKAGE SKID DETAILS
DATE: 21-02-09	JOB NO.: 5486	
CUST NO.:	SCALE: NTS	
DRAWN BY: MC	CHECKED BY:	
APP BY:	DWG NO.: 5486-03	
		REV. 2