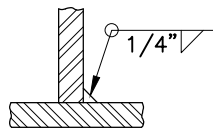


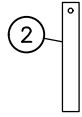
THIS DRAWING IS THE PROPERTY OF ASPIRE ENERGY RESOURCES INC. IT MAY NOT BE REPRODUCED WITHOUT THE PERMISSION OF ASPIRE ENERGY RESOURCES INC.



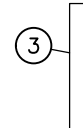
WELD DETAIL 1
WPS: AER-5/11



BOTTOM CLIP
PLATE, 3/8" THK. SA-36
(4) REQUIRED



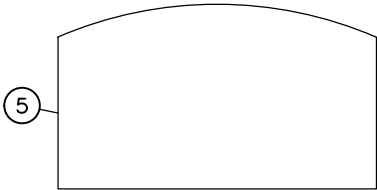
BOTTOM SUPPORT 1
PLATE, 3/8" THK. SA-36
(4) REQUIRED



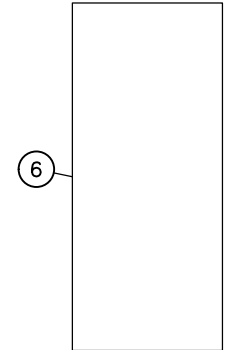
BOTTOM SUPPORT 2
PLATE, 3/8" THK. SA-36
(2) REQUIRED



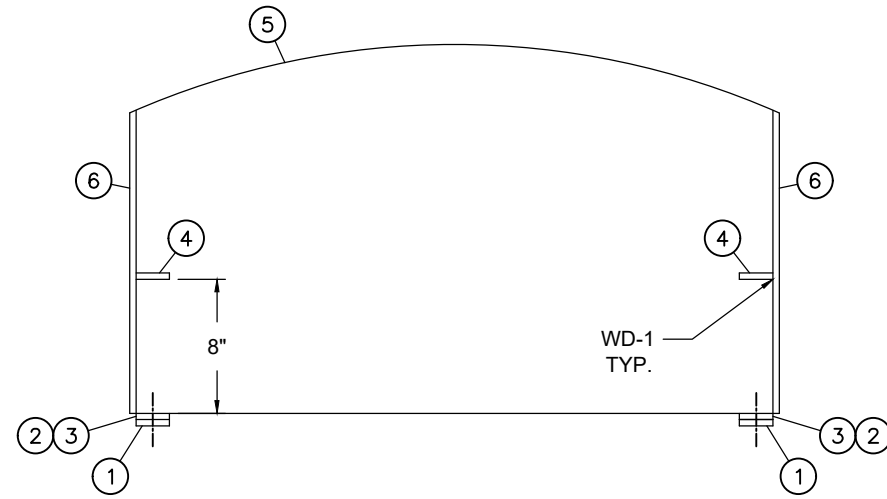
TOP SUPPORT
PLATE, 3/8" THK. SA-36
(2) REQUIRED



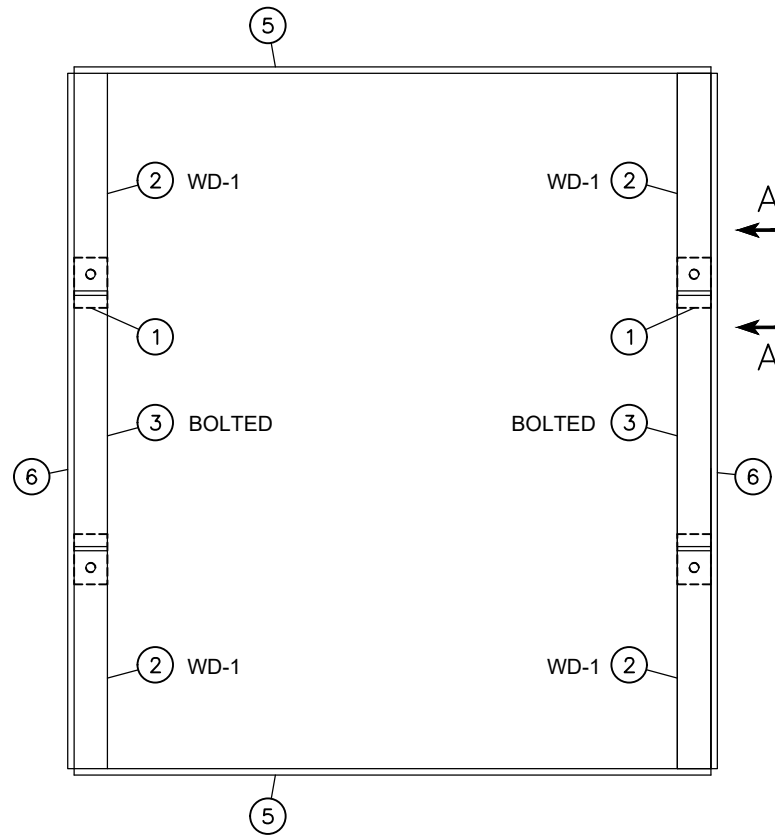
MESH BOX END
PLATE, 3/8" THK. SA-36
(2) REQUIRED



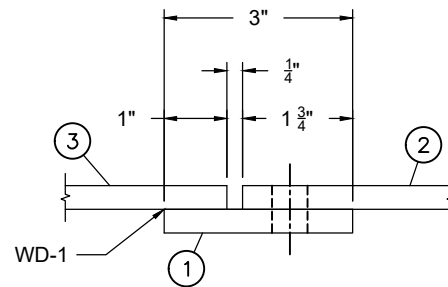
MESH BOX SIDE
PLATE, 3/8" THK. SA-36
(2) REQUIRED



FRONT END VIEW



TOP VIEW




VIEW 'A-A'

BILL OF MATERIALS

TAG	QTY.	DESCRIPTION	MATERIAL	HEAT NUMBERS
1	4	PLATE 3/8" (BOTTOM CLIP)	SA-36	
2	4	PLATE 3/8" (BOTTOM SUPPORT 1)	SA-36	
3	2	PLATE 3/8" (BOTTOM SUPPORT 2)	SA-36	
4	2	PLATE 3/8" (TOP SUPPORT)	SA-36	
5	2	PLATE 3/8" (MESH BOX END)	SA-36	
6	2	PLATE 3/8" (MESH BOX SIDE)	SA-36	
7				
8				
9				
10				

JOB NO. 5486

NO.	DATE	REVISION	BY	APP
0	21-04-16	ISSUED FOR CONSTRUCTION	MC	



ASPIRE ENERGY RESOURCES INC.
22 MCKENZIE DR., RED DEER COUNTY, AB T4S 2H4
OFFICE: 403-314-5422 FAX: 403-314-1823

CLIENT:	KELT EXPLORATION LNG		
DATE:	21-04-16	SEPARATOR PACKAGE MESH BOX DETAILS	
JOB NO.:	5486		
CUST NO.:			
SCALE:	NTS		
DRAWN BY:	MC		
CHECKED BY:		DWG NO.:	5486-08
APP BY:		REV.:	0