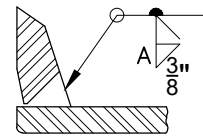


IT MAY NOT BE REPRODUCED WITHOUT THE PERMISSION OF ASPIRE ENERGY RESOURCES INC.

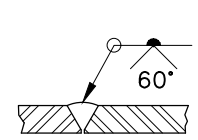
THIS DRAWING IS THE PROPERTY OF ASPIRE ENERGY RESOURCES INC.

GENERAL NOTES:

1. DESIGNED TO ASME B31.3 2016 EDITION
2. DESIGN PRESSURE: 740 PSI
3. PRESSURE TEST: 1110 PSI
4. RADIOGRAPHY: 100 %
5. PWHT: NO
6. HARDNESS TESTING: 10 %



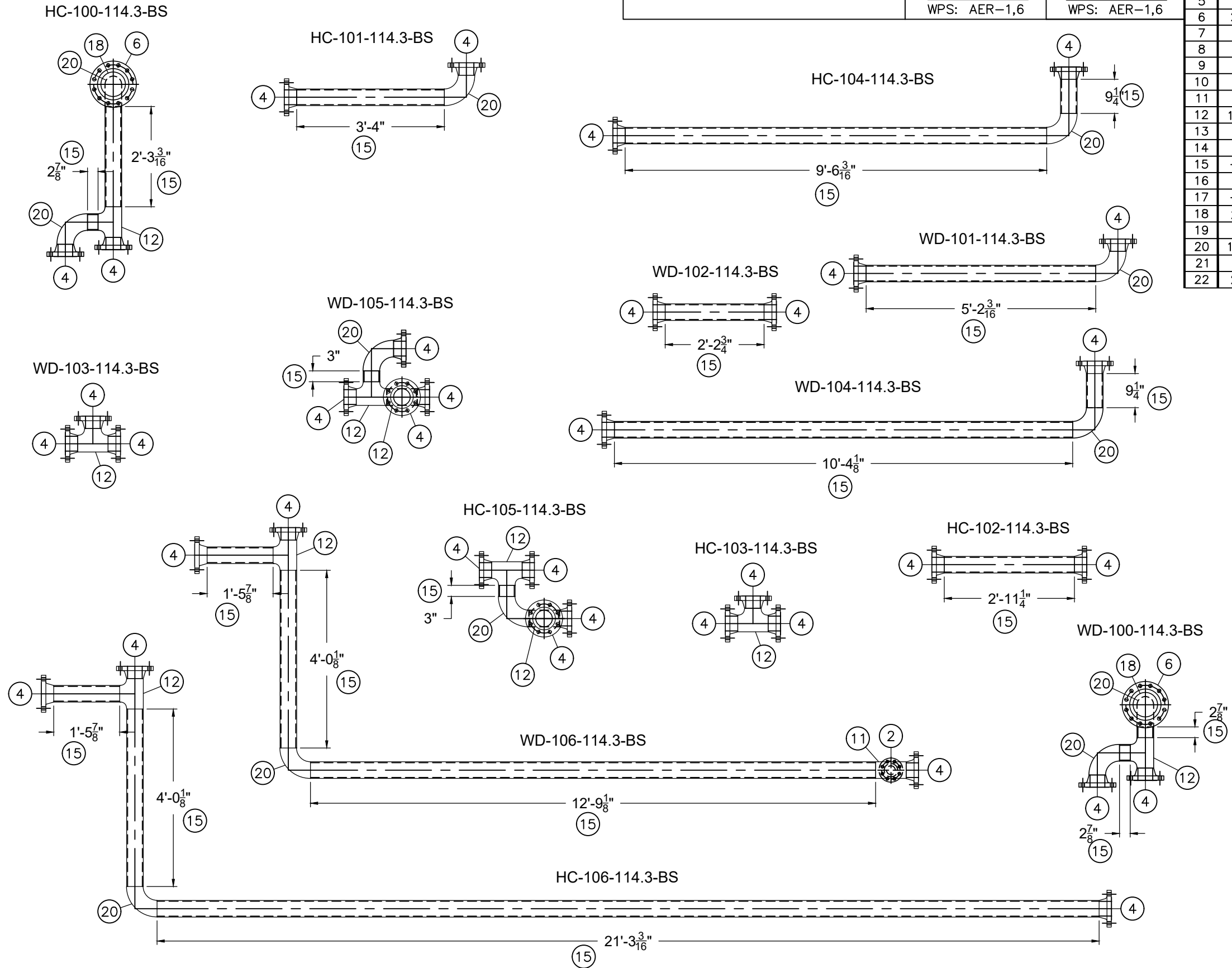
WELD DETAIL 1
WPS: AER-1,6



WELD DETAIL 2
WPS: AER-1,6

BILL OF MATERIALS

TAG	QTY.	DESCRIPTION	MATERIAL	HEAT NUMBERS
1				
2	5	2" 300# ANSI RFWN FLANGE SCH XH	SA-105-N	
3				
4	36	4" 300# ANSI RFWN FLANGE SCH 40	SA-105-N	
5				
6	2	6" 300# ANSI RFWN FLANGE SCH XH	SA-105-N	
7				
8				
9				
10				
11	1	4" x 2" REDUCING TEE SCH 40 x XH	SA-234-WPB	
12	10	4" STRAIGHT TEE SCH 40	SA-234-WPB	
13				
14				
15	-	4" SCH 40 SMLS PIPE	SA-106-B	
16				
17	-	2" SCH XH SMLS PIPE	SA-106-B	
18	2	6" x 4" SCH 40 CONC REDUCER	SA-234-WPB	
19				
20	12	4" 90° LR ELBOW SCH 40	SA-234-WPB	
21				
22	2	2" 90° LR ELBOW SCH 80	SA-234-WPB	



JOB NO. 5486

0	21-03-01	ISSUED FOR CONSTRUCTION	MC
NO.	DATE	REVISION	BY APP
ASPIRE ENERGY RESOURCES INC. 22 MCKENZIE DR., RED DEER COUNTY, AB T4S 2H4 OFFICE: 403-314-5422 FAX: 403-314-1823			
CLIENT:		KELT EXPLORATION NGL	
DATE:		21-03-01	
JOB NO.:		5486	
CUST NO.:		SEPARATOR PACKAGE	
SCALE:		PIPING PLAN VIEW	
DRAWN BY:		MC	
CHECKED BY:		DWG NO.:	
APP BY:		5486-04B	
			REV. 0