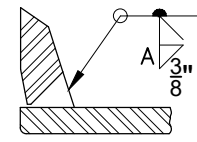


IT MAY NOT BE REPRODUCED WITHOUT THE PERMISSION OF ASPIRE ENERGY RESOURCES INC.

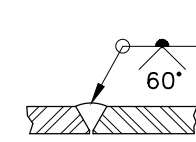
THIS DRAWING IS THE PROPERTY OF ASPIRE ENERGY RESOURCES INC.

**GENERAL NOTES:**

1. DESIGNED TO ASME B31.3 2018 ED
2. DESIGN PRESSURE: 740 PSI
3. PRESSURE TEST: 1110 PSI
4. RADIOGRAPHY: 100 %
5. PWHT: NO
6. HARDNESS TESTING: 10 %



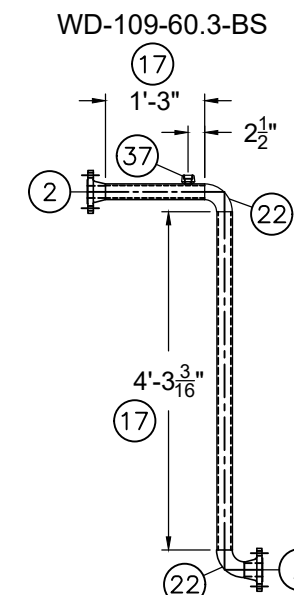
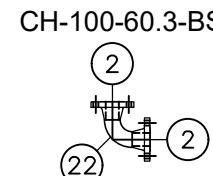
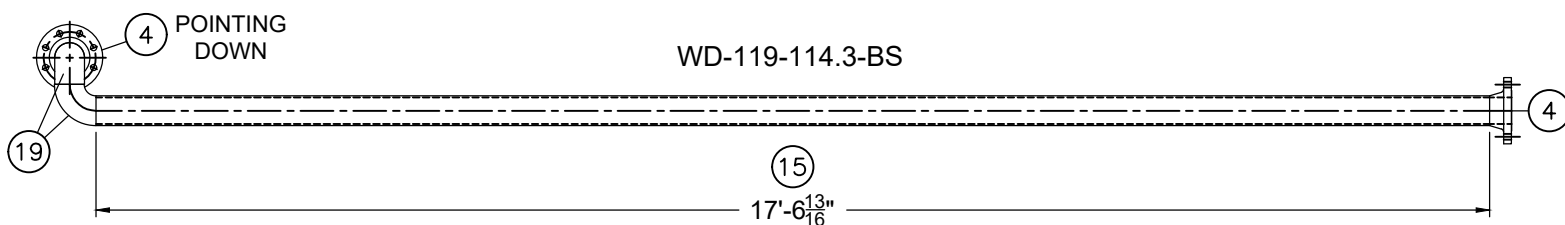
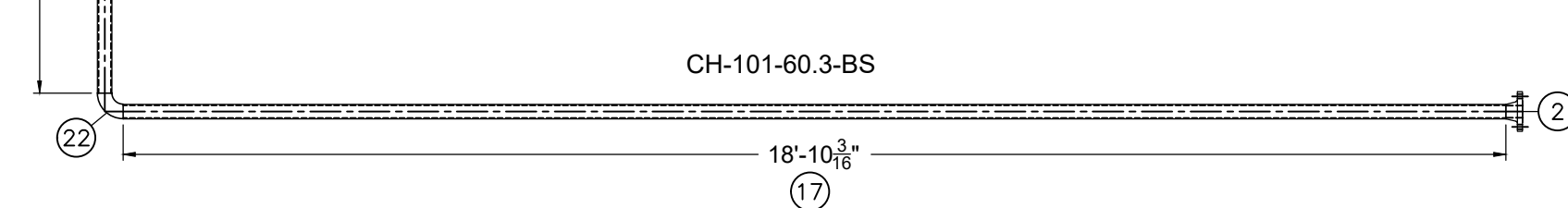
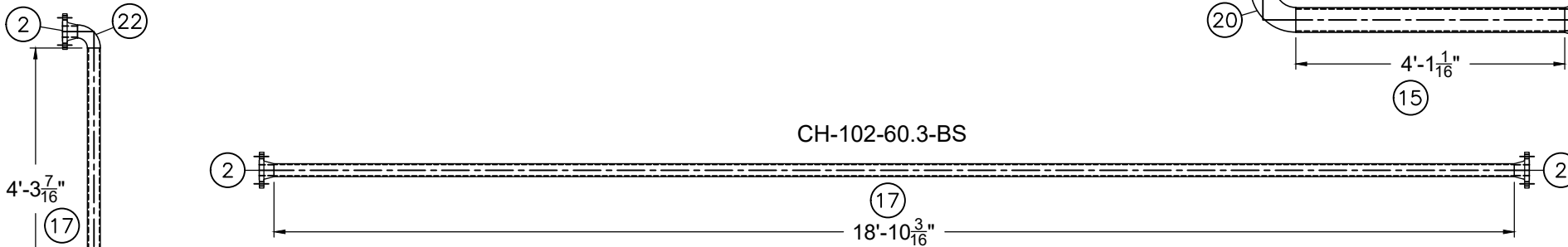
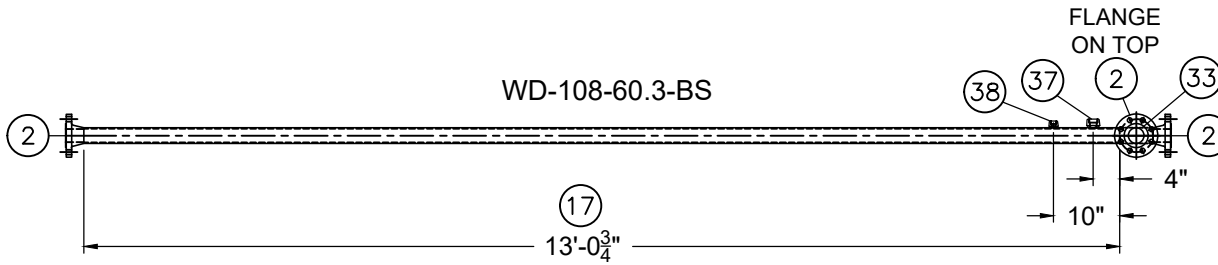
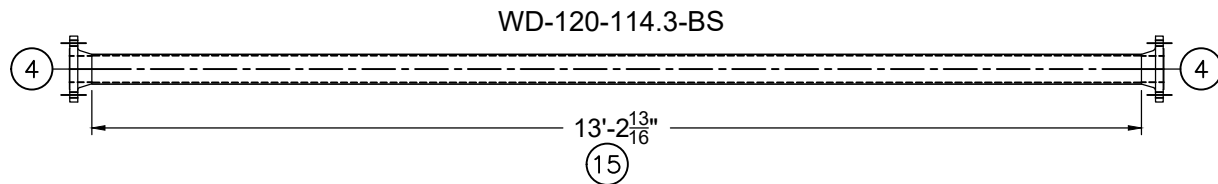
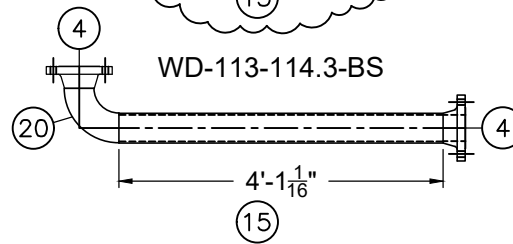
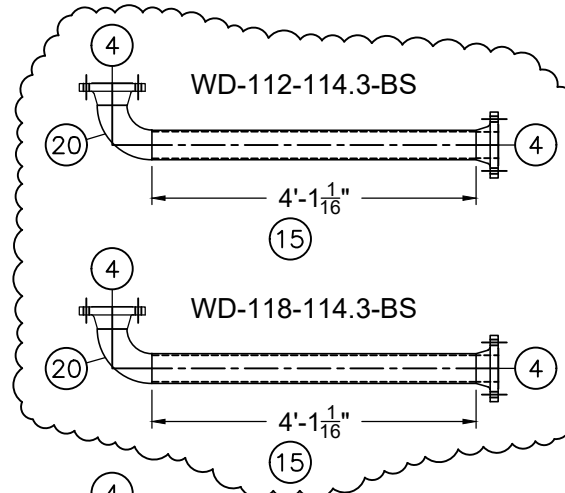
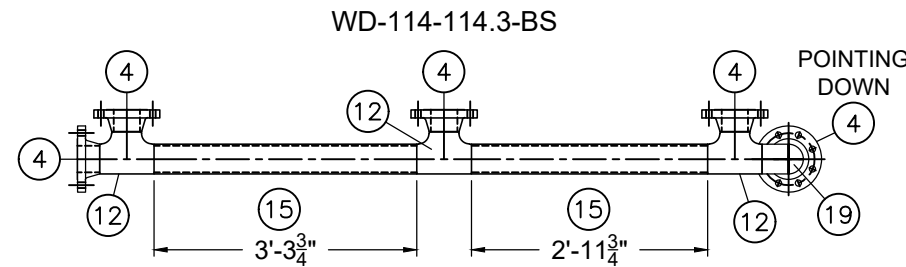
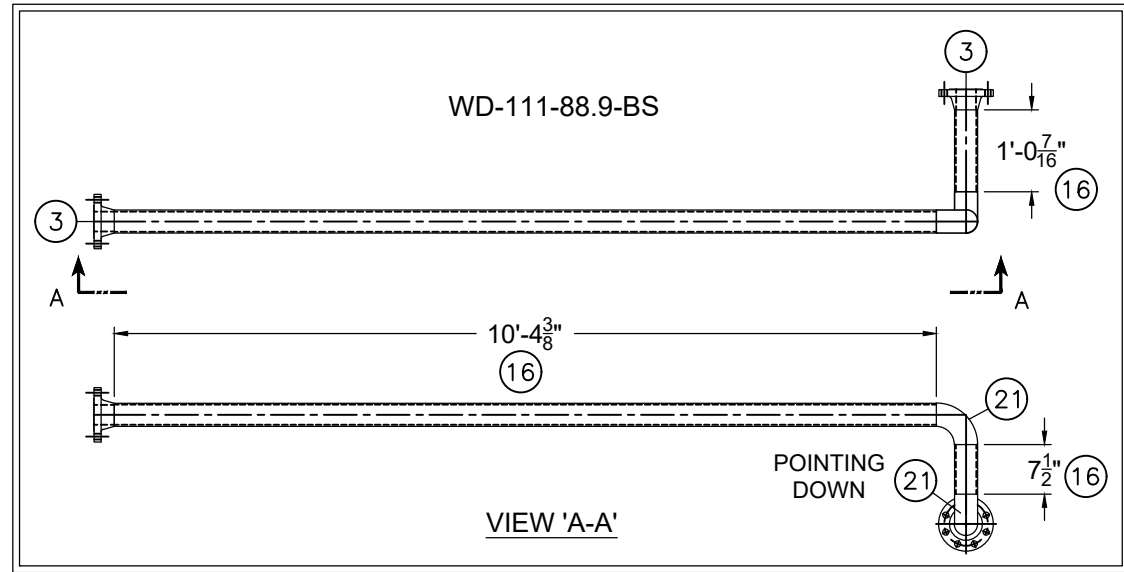
WELD DETAIL 1  
WPS: AER-1,6



WELD DETAIL 2  
WPS: AER-1,6

**BILL OF MATERIALS**

TAG	QTY.	DESCRIPTION	MATERIAL	HEAT NUMBERS
1				
2	11	2" 300# ANSI RFWN FLANGE SCH XH	SA-105-N	
3	2	3" 300# ANSI RFWN FLANGE SCH 40	SA-105-N	
4	15	4" 300# ANSI RFWN FLANGE SCH 40	SA-105-N	
5				
6				
7				
8				
9				
10				
11				
12	3	4" STRAIGHT TEE SCH 40	SA-234-WPB	
13				
14				
15	-	4" SCH 40 SMLS PIPE	SA-106-B	
16	-	3" SCH 40 SMLS PIPE	SA-106-B	
17	-	2" SCH XH SMLS PIPE	SA-106-B	
18				
19	3	4" 90° SR ELBOW SCH 40	SA-234-WPB	
20	3	4" 90° LR ELBOW SCH 40	SA-234-WPB	
21	2	3" 90° LR ELBOW SCH 40	SA-234-WPB	
22	5	2" 90° LR ELBOW SCH XH	SA-234-WPB	
23				
24				
25				
26				
27				
28				
29				
30				
31				
32				
33	1	2" STRAIGHT TEE SCH 80	SA-234-WPB	
34				
35				
36				
37	2	1" 3000# TOL	SA-105-N	
38	1	1/2" 3000# TOL	SA-105-N	
39				
40				



JOB NO. 5486

1	21-05-28	REVISED WD-112; ADDED WD-118	MC	
0	21-03-01	ISSUED FOR CONSTRUCTION	MC	
NO.	DATE	REVISION	BY	APP

**ASPIRE ENERGY RESOURCES INC.**  
 22 MCKENZIE DR., RED DEER COUNTY, AB T4S 2H4  
 OFFICE: 403-314-5422 FAX: 403-314-1823

CLIENT:	KELT EXPLORATION LNG
DATE:	21-03-01
JOB NO.:	5486
CUST NO.:	
SCALE:	NTS
DRAWN BY:	MC
CHECKED BY:	
APP BY:	

SEPARATOR PACKAGE	
PIPING PLAN VIEW	
DWG NO.:	5486-04D
REV.	1