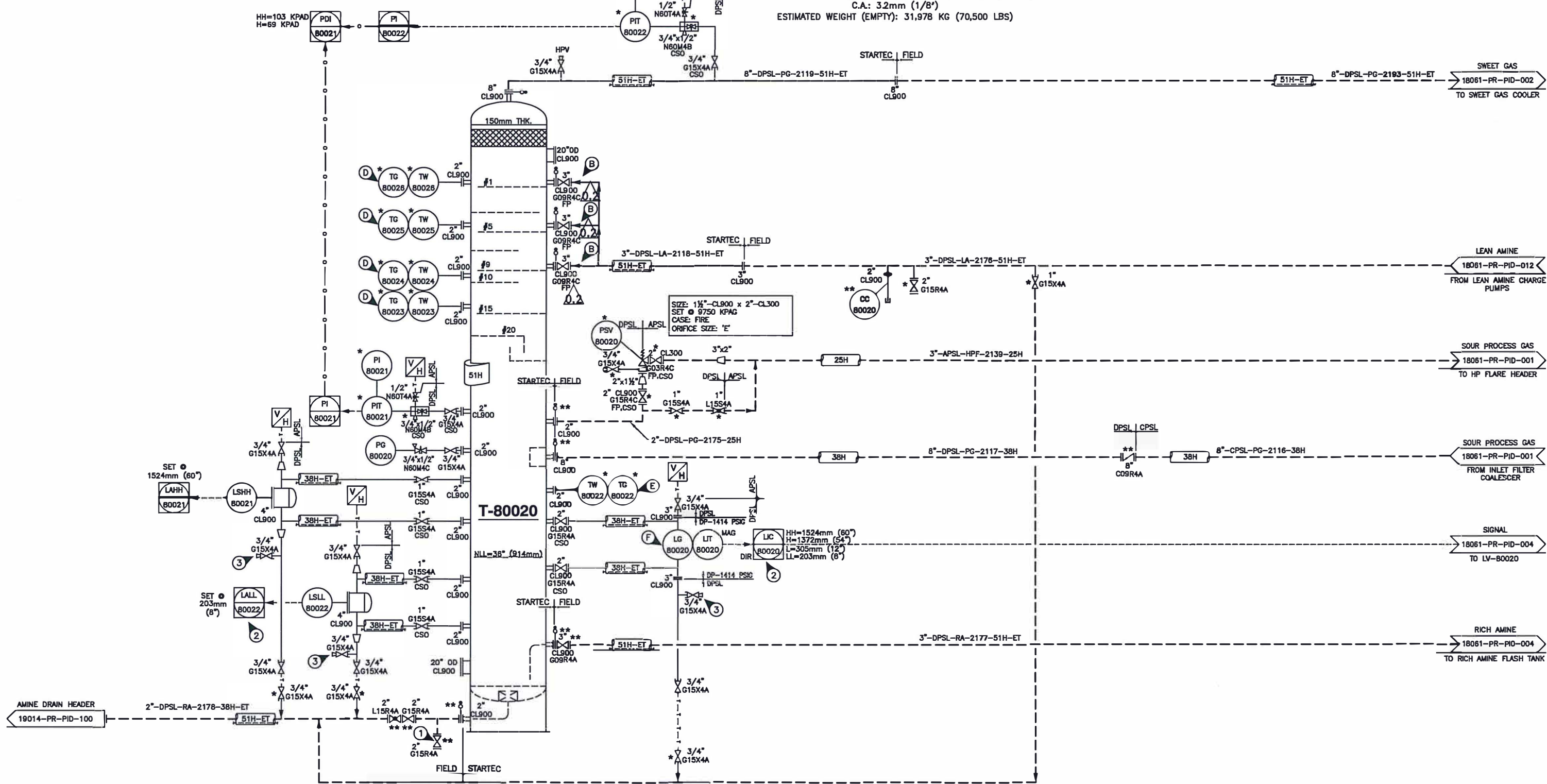


T-80020
 AMINE CONTACTOR
 SIZE: 1219mm (48") ID x 15240mm (50') S/S
 DESIGN: 9750 KPAG (1414 PSIG)/PV @ -45/93°C (-49/200°F),
 C.A.: 3.2mm (1/8")
 ESTIMATED WEIGHT (EMPTY): 31,978 KG (70,500 LBS)



GENERAL NOTES

- A. LEAN AMINE (LA) PIPING DOES NOT REQUIRE P.W.H.T.
 - B. VALVES ACCESSIBLE FROM PLATFORM OR LADDER
 - C. ALL INSTRUMENTATION HEAT TRACED AND INSULATED AT SITE BY OTHERS
 - D. TGS TO BE EQUALLY SPACED. TGS ABOVE TRAY # 01, 05, 10 & 15.
 - E. TG LOCATED AT LIQUID LEVEL
 - F. SPAN UPTO LSHH
1. FOR CHEMICAL CLEAN OUT.
 2. LALL-80020 AND LALL-80022 SHOULD CLOSE LV-80020 ON SHEET 18061-PR-PID-004.
 3. FOR LEVEL CALIBRATION.
- * VALVES AND INSTRUMENTS SUPPLIED BY STARTEC AND SHIPPED LOOSE
 ** VALVES AND INSTRUMENTS SUPPLIED BY OTHERS
 --- FIELD PIPING BY OTHERS

NO.	DATE	BY	AP'D	DESCRIPTION	NO.	DATE	BY	AP'D	DESCRIPTION
A	18-11-22	GE	SR	ISSUED FOR APPROVAL					
B	19-01-21	DD		ISSUED FOR APPROVAL					
C	19-03-04	KJH		GENERAL REVISIONS					
D	19-04-17	GE		ISSUED FOR CONSTRUCTION					
0.1	19-05-13	GE		ISSUED FOR HAZOP					
0.2	19-09-04	GE		REVISED AS SHOWN					

60 GPM STD AMINE GAS PLANT

STARTEC
 COMPRESSION & PROCESS LTD.
 APEGA NO. P13139

CUSTOMER: _____

DRAWN: DD DATE: 19-01-21

CHECKED: *SR* DATE: *Sept 2019*

ENG. APP'L: SR DATE: 19-01-24

PACKAGE NO.: -

REFERENCE NO.: -

TITLE: PIPING & INSTRUMENTATION DIAGRAM AMINE CONTACTOR

SCALE: N.T.S. DRAWING NO.: 18062-PR-PI0-001 REV. 0.2