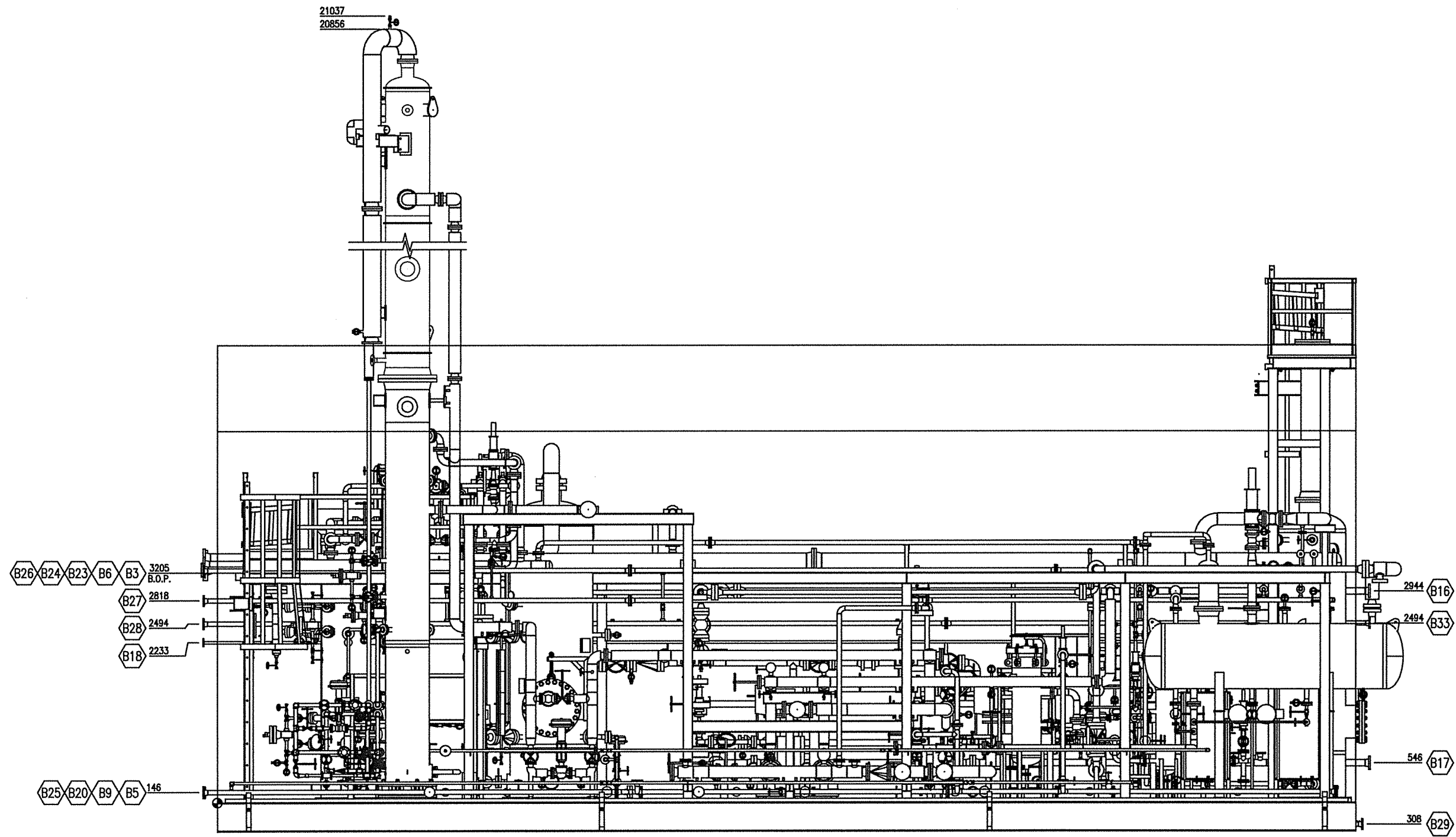


PLAN VIEW
SCALE: 1:30

- GENERAL NOTES:**
1. ALL TAIL DIMENSIONS FROM REFERENCE POINT.
 2. ALL DIMENSIONS IN mm, UNLESS NOTED OTHERWISE.
 3. EST. SHIPPING WEIGHT: 88,802 Kg
EST. OPERATING WEIGHT: 121,879 Kg
 5. OVERALL APPROXIMATE SHIPPING DIMENSIONS:
7,452 mm WIDE
16,714 mm LONG
6,810 mm HIGH


CUSTOMER CONNECTIONS (TIE-IN) SCHEDULE		
TAG	DESCRIPTION	CONNECTION
B1	SOUR PROCESS GAS INLET	8"-CL.600 RF
B2	SOUR PROCESS GAS TO CONTACTOR	8"-CL.600 RF
B3	HP FLARE HEADER	10"-CL.150 RF
B4	FROM CONTACTOR PSV-80020	3"-CL.150 RF
B5	HYDROCARBON DRAIN HEADER	2"-CL.600 RF
B6	SWEET PROCESS GAS OUTLET	8"-CL.600 RF
B7	SWEET PROCESS GAS FROM SWEET GAS COOLER	8"-CL.600 RF
B8	RICH AMINE FROM CONTACTOR	3"-CL.900 RF
B9	900# AMINE DRAIN	1"-CL.900 RF
B10	LEAN AMINE FROM REBOILER	4"-CL.150 RF
B11	ACID GAS TO CONDENSER	6"-CL.150 RF
B12	-	-
B13	STEAM FROM REBOILER	8"-CL.150 RF
B14	AMINE TO REBOILER	6"-CL.300 RF
B15	AMINE DRAIN FROM REBOILER/SURGE VESSEL	2"-CL.150 RF
B16	LEAN AMINE TO AMINE COOLER	3"-CL.150 RF
B17	LEAN AMINE FROM AMINE COOLER	3"-CL.150 RF
B18	AMINE FROM STORAGE TANK	1"-CL.150 RF
B19	LEAN AMINE TO CONTACTOR	3"-CL.900 RF
B20	AMINE DRAIN HEADER	2"-CL.150 RF
B21	ACID GAS/REFLUX WATER FROM CONDENSER	2"-CL.150 RF
B22	AMINE DRAIN FROM REGEN TOWER	2"-CL.150 RF
B23	ACID GAS FLARE HEADER	6"-CL.150 RF
B24	TO ACID GAS COMPRESSION (FUTURE)	3"-CL.150 RF
B25	AMINE DRAIN HEADER	2"-CL.150 RF
B26	FUEL GAS FROM HEADER	2"-CL.150 RF
B27	VENT HEADER TO LOW PRESSURE FLARE	2"-CL.150 RF
B28	INSTRUMENT AIR FROM HEADER	2"-CL.150 RF
B29	SKID DRAIN	2"-CL.150 RF
B30	LEAN AMINE TO SURGE VESSEL	4"-CL.150 RF
B31	LEAN AMINE FROM SURGE VESSEL	4"-CL.150 RF
B32	INSTRUMENT AIR TO SWEET GAS COOLER	1"-CL.3000 NPT
B33	INSTRUMENT AIR TO AMINE GAS COOLER	1"-CL.3000 NPT
B34	INSTRUMENT AIR TO CONDENSER	1"-CL.3000 NPT
B35	INSTRUMENT AIR TO REBOILER/SURGE VESSEL	1"-CL.3000 NPT
B36	FUEL GAS TO REBOILER/SURGE VESSEL	1"-CL.150 RF
B37	VENT HEADER FROM CONTACTOR	1"-CL.150 RF
B38	VENT HEADER FROM REBOILER/SURGE VESSEL	1"-CL.150 RF
B39	HC SKIM (ACCUMULATOR/FLASH TANK)	1"-CL.150 RF

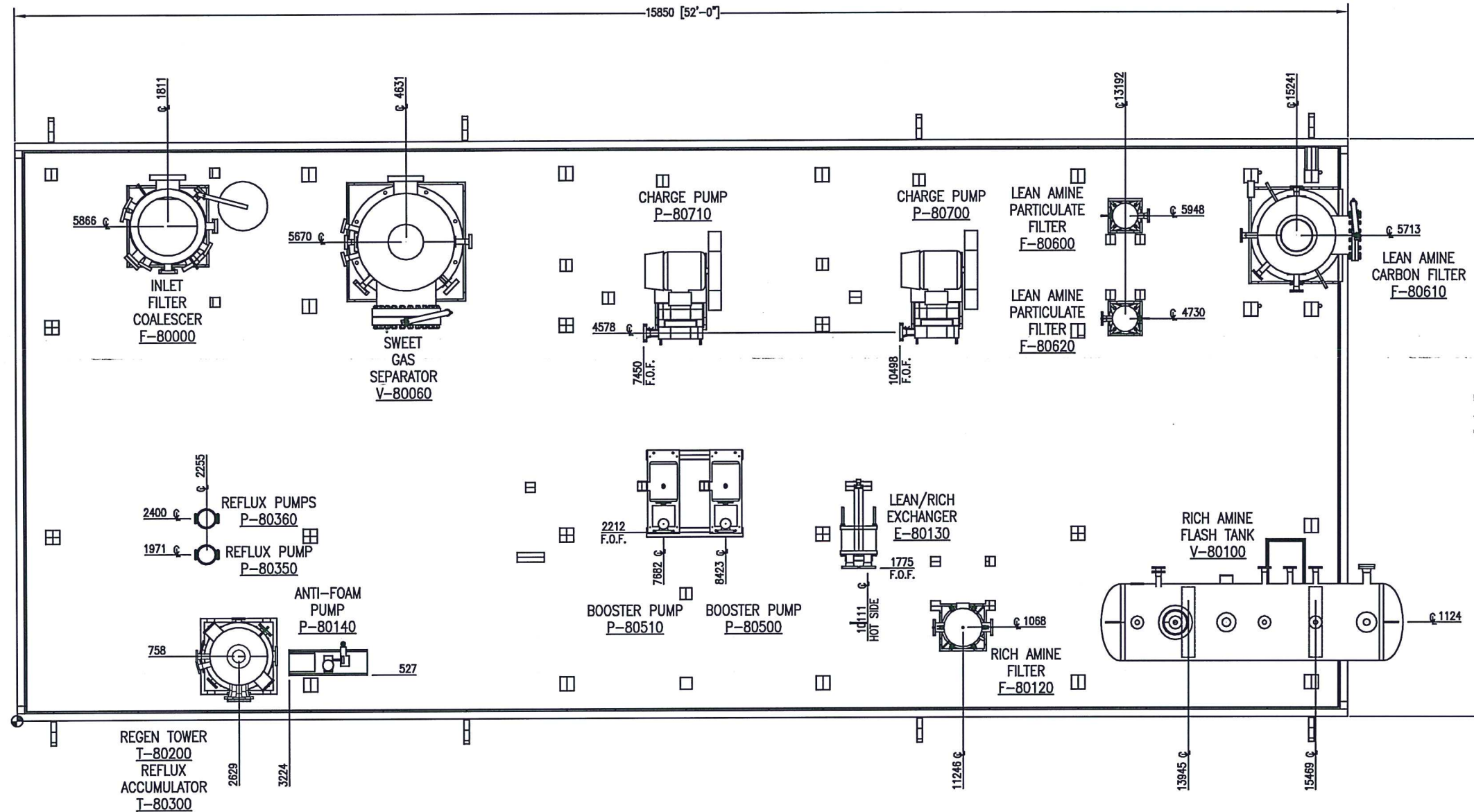
REFERENCE DRAWINGS				REVISIONS								55 GPM STD GAS PLANT		STARTEC COMPRESSION & PROCESS LTD. APEGA NO. P13139		
DWG. NO.	DESCRIPTION	DWG. NO.	DESCRIPTION	NO.	DATE	BY	AP'D	DESCRIPTION	NO.	DATE	BY	AP'D	DESCRIPTION	CUSTOMER	TITLE	
				0	19-04-30	GE		ISSUED FOR CONSTRUCTION						SEMCCMS	GENERAL ARRANGEMENT AMINE SKID PLAN VIEW	
FOR CONSTRUCTION																
May 2, 2019																
														SCALE	DRAWING NO. 18061-ME-GAD-001	REV. 0



ELEVATION VIEW
SCALE: 1:30


- GENERAL NOTES
1. ALL TAIL DIMENSIONS FROM REFERENCE POINT.
 2. ALL DIMENSIONS IN mm, UNLESS NOTED OTHERWISE.
 3. ALL ELEVATIONS FROM TOP OF STEEL, BOTTOM OF CHECKERED PLATE.

REFERENCE DRAWINGS				REVISIONS								55 GPM STD GAS PLANT		 <small>COMPRESSION & PROCESS LTD. APEGA NO. P13139</small>					
DWG. NO.	DESCRIPTION	DWG. NO.	DESCRIPTION	NO.	DATE	BY	AP'D	DESCRIPTION	NO.	DATE	BY	AP'D	DESCRIPTION	CUSTOMER	TITLE				
				0	19-04-30	GE		ISSUED FOR CONSTRUCTION						SEMCAMS	GENERAL ARRANGEMENT AMINE SKID ELEVATION VIEW				
FOR CONSTRUCTION																<small>LSD: 11-02-088-03 W6M</small> <small>DRAWN GE DATE 19-04-30</small> <small>CHECKED CA DATE May 1, 19</small> <small>ENG. APP'L DATE</small> <small>PROD. APP'L DATE</small> <small>PACKAGE No. -</small>	SCALE -	DRAWING NO. 18061-ME-GAD-002	REV. 0
May 2, 2019																			

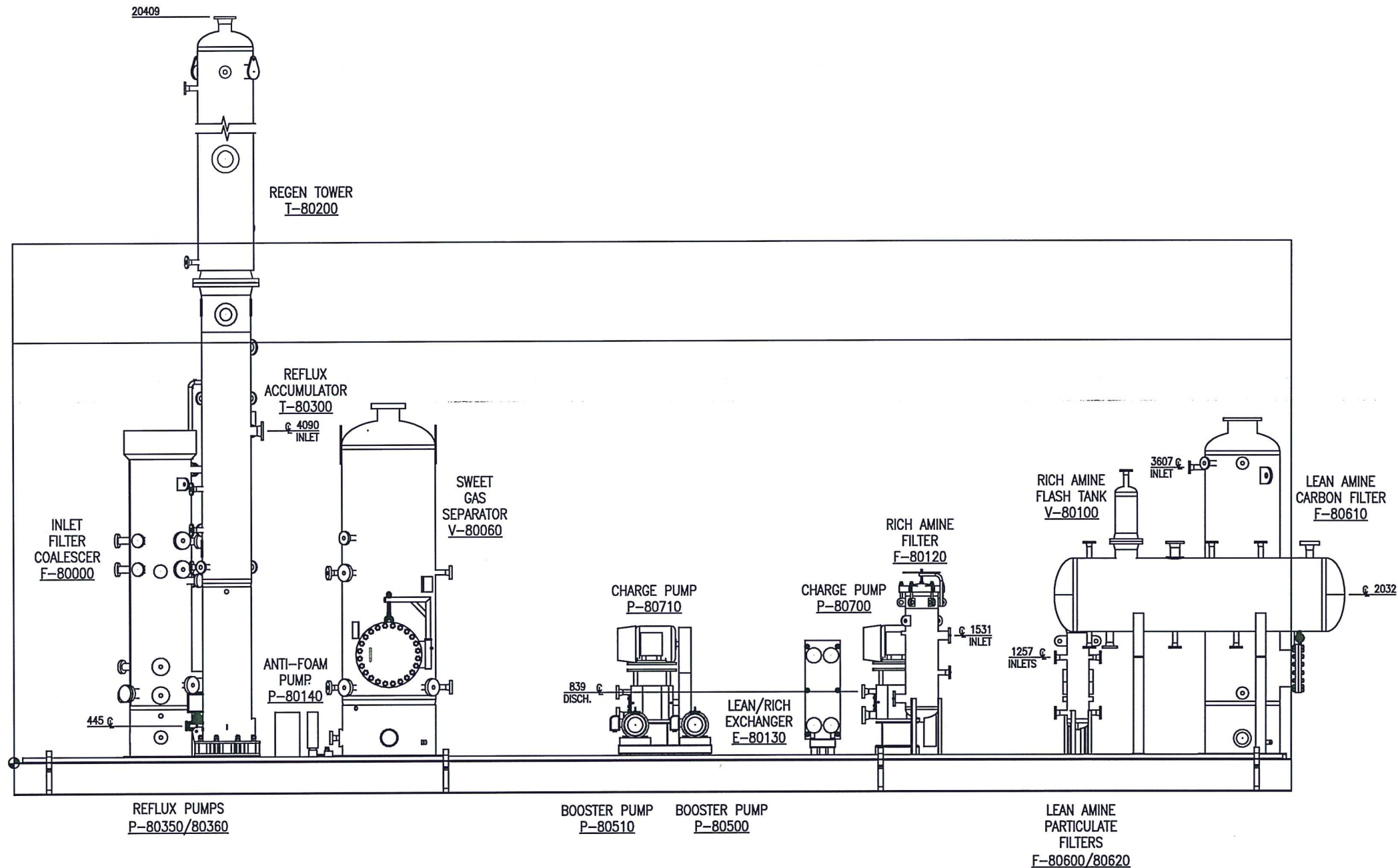


PLAN VIEW
SCALE: 1:30

GENERAL NOTES:
 1. ALL TAIL DIMENSIONS FROM REFERENCE POINT.
 2. ALL DIMENSIONS IN mm, UNLESS NOTED OTHERWISE.

REFERENCE DRAWINGS				REVISIONS								60 GPM STD AMINE GAS PLANT		 COMPRESSION & PROCESS LTD. APEGA NO. P13139
DWG. NO.	DESCRIPTION	DWG. NO.	DESCRIPTION	NO.	DATE	BY	AP'D	DESCRIPTION	NO.	DATE	BY	AP'D	DESCRIPTION	
				0	19-02-20	GE		ISSUED FOR CONSTRUCTION						MERITAGE MIDSTREAM
FOR CONSTRUCTION														
														TITLE
														GENERAL ARRANGEMENT - EQT ONLY AMINE SKID PLAN VIEW
														SCALE
														DRAWING NO. 18061-ME-GAD-005
														REV. 0

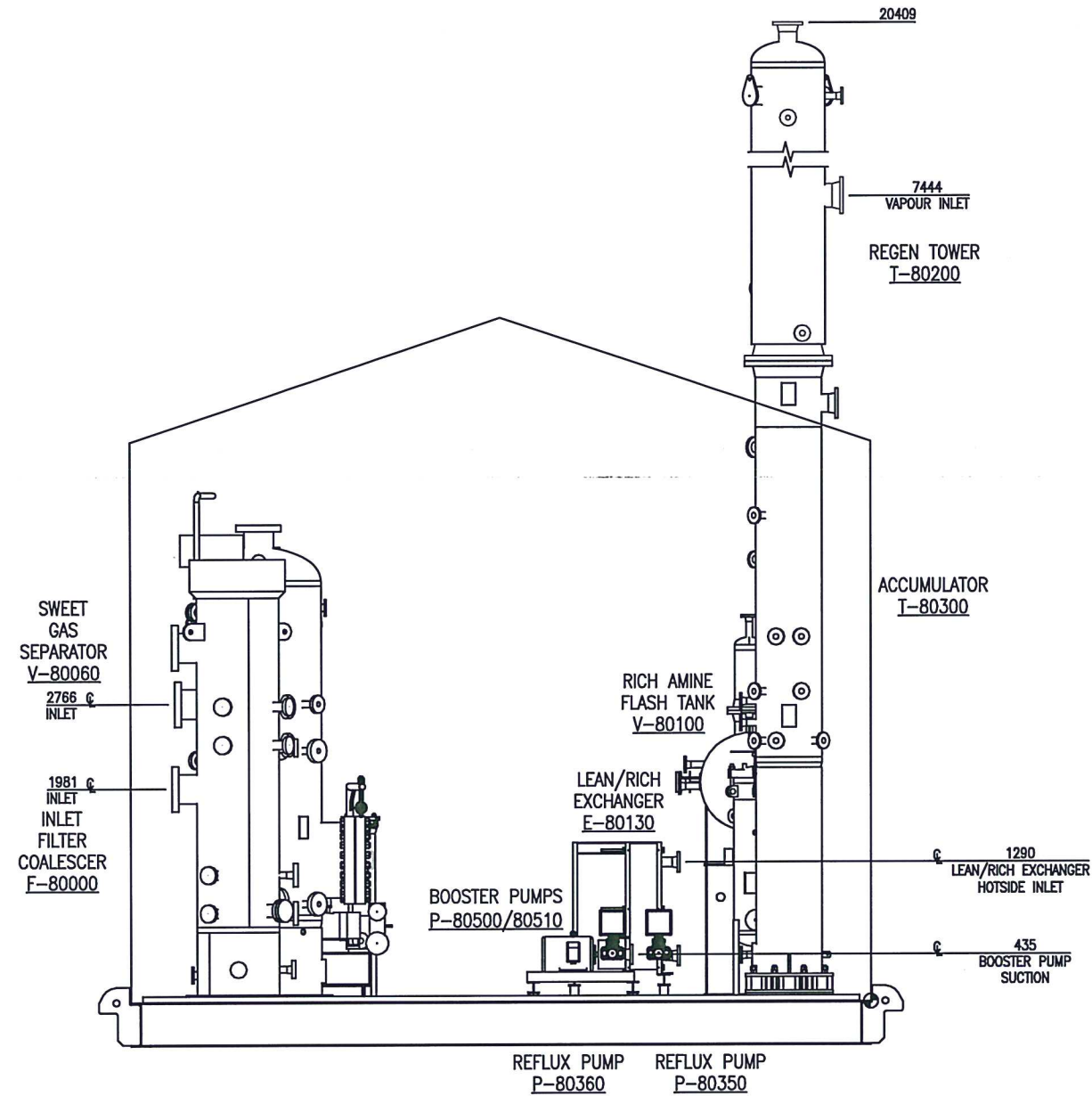
May 2, 2019



ELEVATION VIEW
SCALE: 1:30


- GENERAL NOTES**
1. Ⓢ ALL TAIL DIMENSIONS FROM REFERENCE POINT.
 2. ALL DIMENSIONS IN mm, UNLESS NOTED OTHERWISE.
 3. ALL ELEVATIONS FROM TOP OF STEEL, BOTTOM OF CHECKERED PLATE.

REFERENCE DRAWINGS				REVISIONS					60 GPM STD AMINE GAS PLANT		STARTEC					
DWG. NO.	DESCRIPTION	DWG. NO.	DESCRIPTION	NO.	DATE	BY	AP'D	DESCRIPTION	NO.	DATE	BY	AP'D	DESCRIPTION	SCALE	DRAWING NO.	REV.
				0	19-02-20	GE		ISSUED FOR CONSTRUCTION							18061-ME-GAD-006	0
FOR CONSTRUCTION									LSD: 11-02-068-03 W6M		CUSTOMER					
May 2, 2019									DRAWN GE DATE 19-02-19		MERTAGE MIDSTREAM					
									CHECKED DATE 12/22/19		TITLE		GENERAL ARRANGEMENT - EQT ONLY			
									ENG. APP'L DATE		AMINE SKID					
									PROD. APP'L DATE		ELEVATION VIEW					
									MERTAGE PACKAGE No.		SCALE					



END VIEW
SCALE: 1:30

- GENERAL NOTES**
1. ALL TAIL DIMENSIONS FROM REFERENCE POINT.
 2. ALL DIMENSIONS IN mm, UNLESS NOTED OTHERWISE.
 3. ALL ELEVATIONS FROM TOP OF STEEL, BOTTOM OF CHECKERED PLATE.

REFERENCE DRAWINGS				REVISIONS								60 GPM STD AMINE GAS PLANT		 <small>COMPRESSION & PROCESS LTD. APEGA NO. P13139</small>			
DWG. NO.	DESCRIPTION	DWG. NO.	DESCRIPTION	NO.	DATE	BY	AP'D	DESCRIPTION	NO.	DATE	BY	AP'D	DESCRIPTION	DATE	TITLE		
				0	19-02-20	GE		ISSUED FOR CONSTRUCTION						19-02-19	CUSTOMER MERITAGE MIDSTREAM TITLE GENERAL ARRANGEMENT - EQT ONLY AMINE SKID END VIEW		
<div style="border: 2px solid black; padding: 5px; display: inline-block;"> <p style="color: red; font-weight: bold; margin: 0;">FOR CONSTRUCTION</p> <p style="color: red; font-weight: bold; margin: 0;">May 2, 2019</p> </div>														DRAWN GE DATE 19-02-19			
																CHECKED SA DATE 10/22/19	
																	ENG. APP'L DATE
																	PROD. APP'L DATE
													MERITAGE PACKAGE No. -	SCALE -	DRAWING NO. 18061-ME-GAD-007	REV. 0	