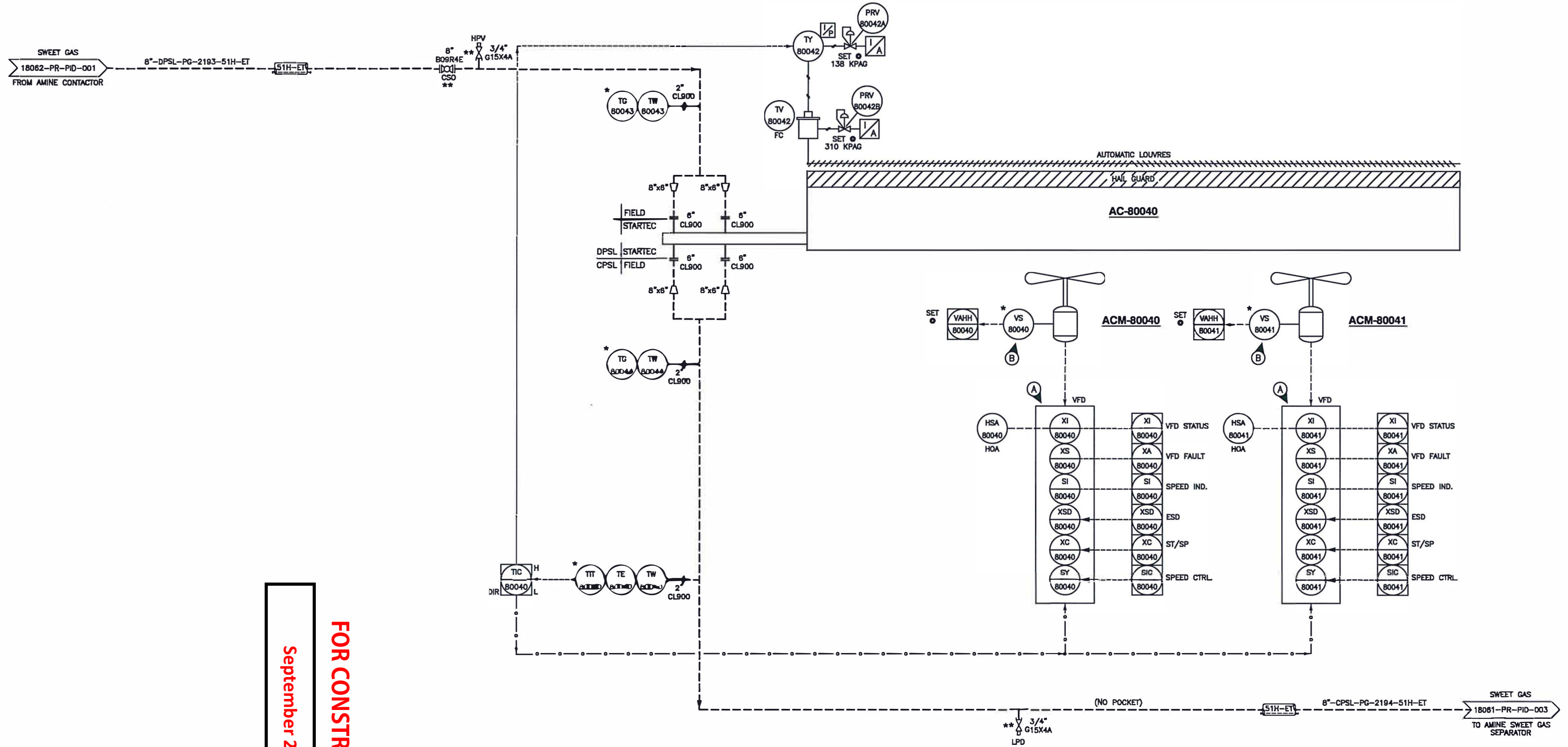


**AC-80040**  
 SWEET GAS COOLER  
 MANUFACTURER: ALFA LAVAL  
 MODEL: E84-2-23.5  
 DUTY: 614.5 KW  
 DESIGN: 9750 KPAG (1414 PSIG) @ -45/93.3°C (-49°F/200°F)  
 C.A.: 3.2mm (1/8")  
 ESTIMATED WEIGHT (EMPTY): 7936 KG (17496 LBS)

**ACM-80040/41**  
 FAN MOTORS  
 MANUFACTURER/ENCLOSURE/FRAME: TBA, TEFC, 256T  
 POWER: 20HP  
 VOLTAGE: 460/3PH/60HZ  
 RPM: 1800RPM



FOR CONSTRUCTION  
 September 25, 2019

GENERAL NOTES

- A. SUPPLIED AND WIRED BY OTHERS.
- B. GREASE TUBING TO REACH GROUND.
- 1. ALL GRADING BELOW AIR COOLER/CONDENSERS SHOULD BE SLOPED SO THAT A POOL FIRE DOES NOT OCCUR. PROVISIONS SHOULD BE MADE TO CONTAIN OR DIRECT INVENTORY OF LIQUID FILLED EQUIPMENT AWAY FROM AIR COOLER/ CONDENSERS. IN ADDITION, STARTEC UNDERSTANDS ALL OTHERS CONDITIONS OF API 521, 6TH EDITION SECTION 4.4.13.2.8.5 (FIRE MITIGATION ALTERNATIVES) ARE SUCH THAT THE FIRE CASE DOES NOT NEED TO BE CONSIDERED. PROTECTION FOR AIR COOLER/CONDENSERS IS BASED ON ABOVE CRITERION BEING MET. THERMAL PSV NOT REQUIRED AS PSV ON SWEET GAS SEPARATOR IS CONSIDERED FOR OVERPRESSURE PROTECTION OF COOLER.
- \* VALVES AND INSTRUMENTS SUPPLIED BY STARTEC AND SHIPPED LOOSE
- \*\* VALVES AND INSTRUMENTS SUPPLIED BY OTHERS
- FIELD PIPING BY OTHERS

NO.	DATE	BY	AP'D	DESCRIPTION	NO.	DATE	BY	AP'D	DESCRIPTION
A	19-01-07	DD	SR	ISSUED FOR APPROVAL					
B	19-01-21	DD		ISSUED FOR APPROVAL					
C	19-03-04	KJH		GENERAL REVISIONS					
O	19-04-17	GE		ISSUED FOR CONSTRUCTION					
0.1	19-05-13	GE		ISSUED FOR HAZOP					
0.2	19-09-04	GE		NO CHANGES ON THIS SHEET					

**55 GPM AMINE GAS PLANT**

**STARTEC**  
 COMPRESSION & PROCESS LTD.  
 APEGA NO. P13139

CUSTOMER: \_\_\_\_\_

DRAWN: DD DATE: 19-01-21

CHECKED: *SR* DATE: *Sept 20, 19*

ENG. APP'L: \_\_\_\_\_ DATE: \_\_\_\_\_

PACKAGE NO.: \_\_\_\_\_

REFERENCE NO.: \_\_\_\_\_

TITLE: PIPING & INSTRUMENTATION DIAGRAM  
 SWEET GAS COOLER

SCALE: N.T.S. DRAWING NO.: 18061-PR-PID-002 REV. 0.2