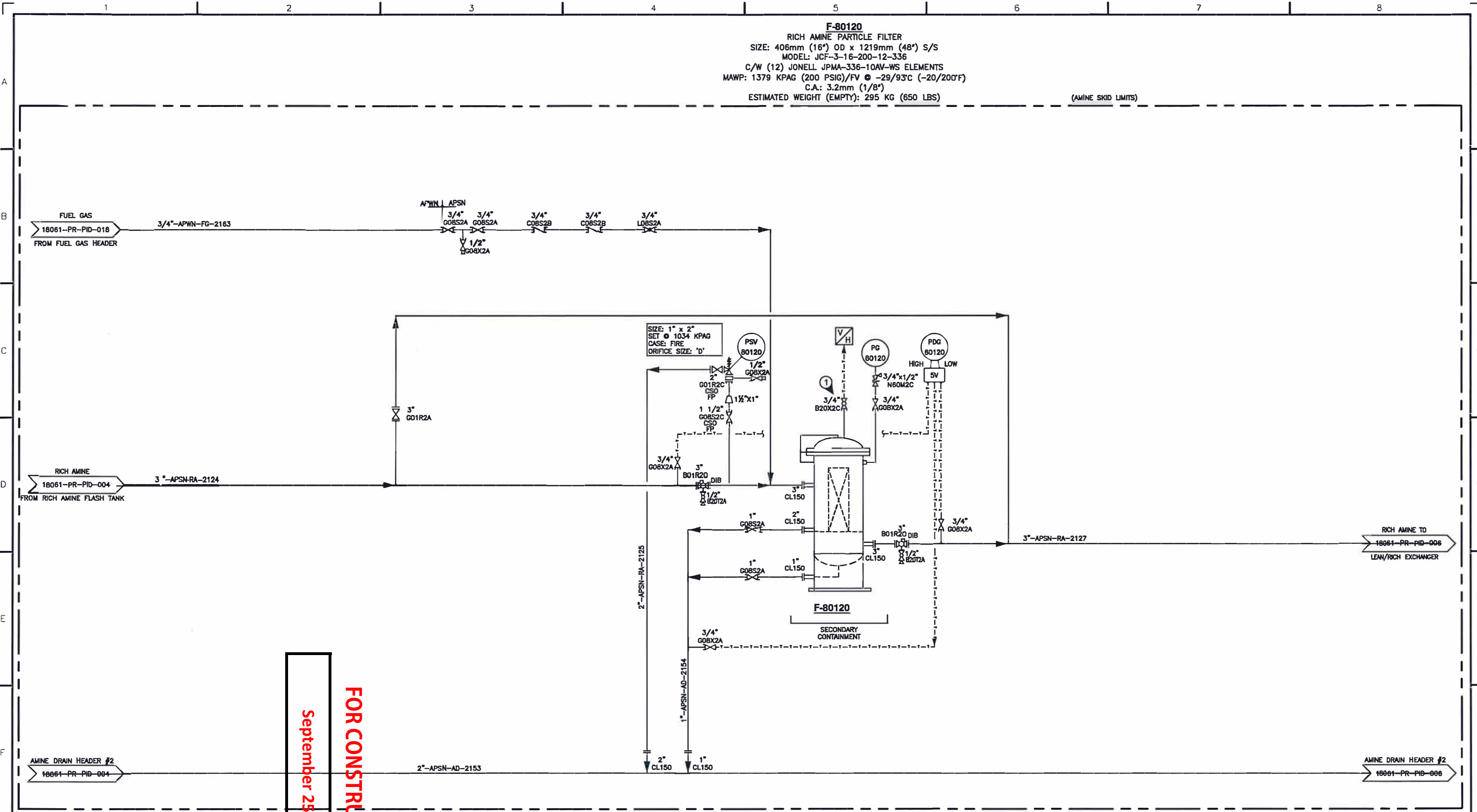


F-80120
 RICH AMINE PARTICLE FILTER
 SIZE: 406mm (16") OD x 1219mm (48") S/S
 MODEL: JCF-3-16-200-12-336
 C/W (12) JONELL JPMA-336-10AV-WS ELEMENTS
 MAWP: 1379 KPAG (200 PSIG)/FV @ -29/93°C (-20/200°F)
 C.A.: 3.2mm (1/8")
 ESTIMATED WEIGHT (EMPTY): 295 KG (650 LBS)

(AMINE SKID LIMITS)



September 25, 2019

FOR CONSTRUCTION

GENERAL NOTES

- A. ALL PIPING PROJECTING OUTSIDE OF THE BUILDING TO BE LOW TEMP MATERIAL BACK TO THE FIRST JOINT INSIDE BUILDING.
 - B. LEAN AMINE (LA) PIPING DOES NOT REQUIRE P.W.H.T..
 - 1. SPRING CLOSED VALVE.
- * VALVES AND INSTRUMENTS SUPPLIED BY STARTEC AND SHIPPED LOOSE
 ** VALVES AND INSTRUMENTS SUPPLIED BY OTHERS
 --- FIELD PIPING BY OTHERS

NO.	DATE	BY	AP'D	DESCRIPTION	NO.	DATE	BY	AP'D	DESCRIPTION
A	19-01-07	DD	SR	ISSUED FOR APPROVAL					
B	19-01-21	DD		ISSUED FOR APPROVAL					
C	19-03-04	KJH		GENERAL REVISIONS					
D	19-04-17	GE		ISSUED FOR CONSTRUCTION					
0.1	19-05-13	GE		ISSUED FOR HAZOP					
0.2	19-09-04	GE		NO CHANGES ON THIS SHEET					

55 GPM AMINE GAS PLANT		 COMPRESSION & PROCESS LTD. APEGA NO. P13139
DRAWN: DD	DATE: 19-01-21	
CHECKED: <i>SEP 20 19</i>	DATE:	CUSTOMER:
ENG. APP'D: <i>SN</i>	DATE: <i>SEP 20 19</i>	TITLE: PIPING & INSTRUMENTATION DIAGRAM RICH AMINE PARTICLE FILTER
PACKAGE NO.:		SCALE: N.T.S.
REFERENCE NO.:		DRAWING NO.: 18061-PR-PID-005
		REV. 0.2