

GENERAL NOTES

DESIGN		PAINTING AND INSULATION	
DESIGN CODE API SPEC. 12F, ELEVENTH EDITION, NOV 1 1994	ADDITIONAL CODES	INTERNAL FINISH NONE	
DESIGN PRESSURE ATMOSPHERIC	DESIGN VACUUM ATMOSPHERIC	CORROSION ALLOWANCE NONE	
RADIOGRAPHY NONE	JOINT EFFICIENCY N/A	EXTERNAL FINISH 1/2" URETHANE FOAM	
IMPACT TESTING N/A	AIR-TEST PRESSURE 16 oz.	CAPACITY 31.9cu. m 200 Bbl. NOMINAL	
MINIMUM DESIGN METAL TEMPERATURE -29°C (-20°F)	SERVICE WATER, OIL, GAS	OVERALL WIDTH	
OVERALL HEIGHT 3810 (12'-6")	WEIGHT dry:	operating: design:	

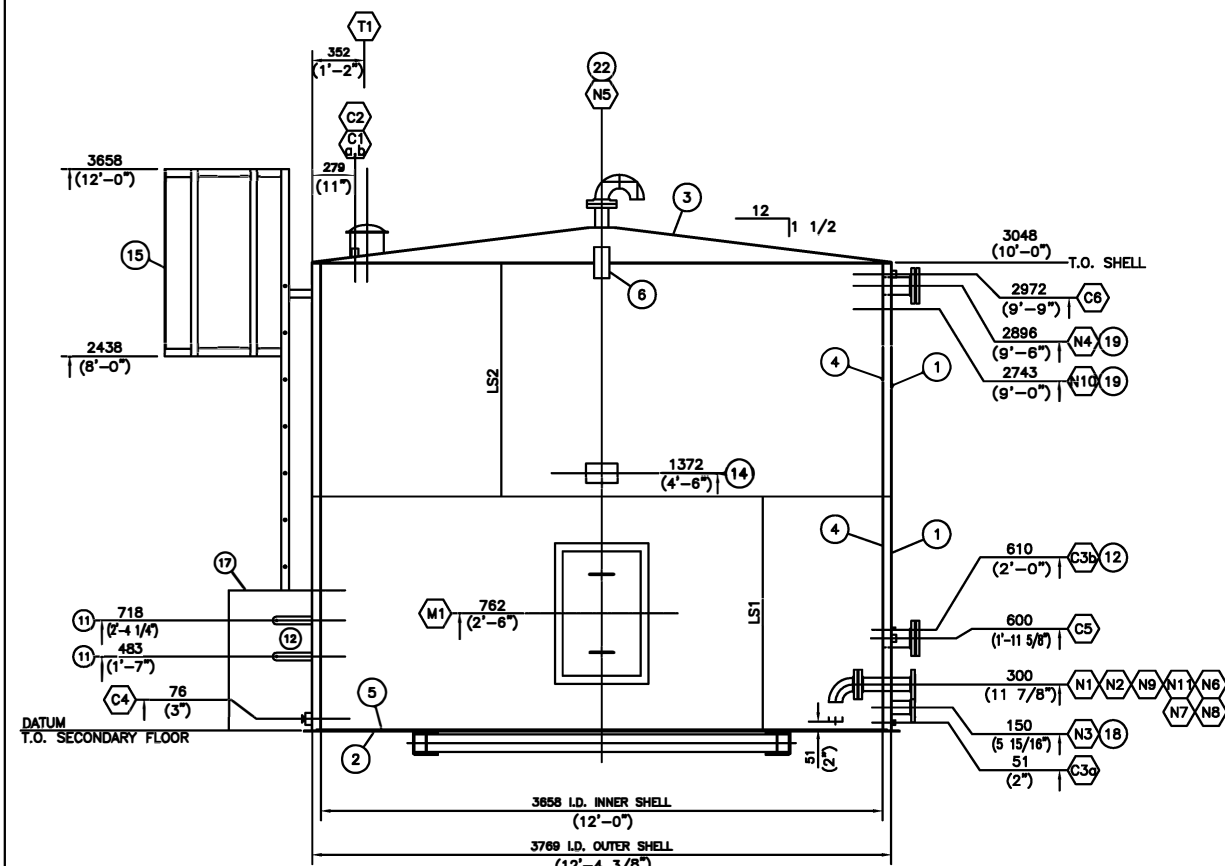
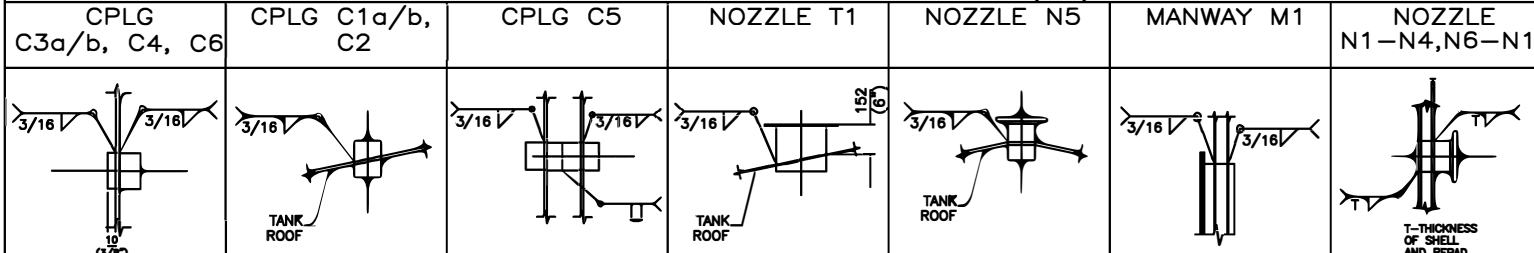
NOZZLE SCHEDULE

MK#	NO.	SIZE	SCH.	RATE	TYPE	PROJ. INT.	EXT.	REPAD YRS	NO	DESCRIPTION
N1	1	89 3/4"	STD	150#	RFSO	152 6"	152 6"		✓	INLET
N2	1	89 3/4"	STD	150#	RFSO	152 6"	152 6"		✓	OUTLET c/w SYPHON
N3	1	60 3/4"	STD	150#	RFSO	152 6"	152 6"		✓	DRAIN
N4	1	114 4"	STD	150#	RFSO	152 6"	152 6"		✓	HIGH LEVEL c/w BLIND
N5	1	89 3/4"	STD	150#	RFSO	152 6"	152 6"		✓	VENT c/w BIRDSCREENED GOOSENECK
N6	1	114 4"	STD	150#	RFSO	152 6"	152 6"		✓	ANODE c/w BLIND
N7	1	114 4"	STD	150#	RFSO	152 6"	152 6"		✓	REFERENCE CELL
N8	1	89 3/4"	STD	150#	RFSO	152 6"	152 6"		✓	ANODE c/w BLIND
N9	1	89 3/4"	STD	150#	RFSO	152 6"	152 6"		✓	SPARE
N10	1	114 4"	STD	150#	RFSO	152 6"	152 6"		✓	OVERFLOW
N11	1	114 4"	STD	150#	RFSO	152 6"	152 6"		✓	LOW LEVEL c/w BLIND
C1a,b	2	48 11/16"	NPT	3000#	FULL		HALF		✓	LEVEL GUIDE
C2	1	27 3/4"	NPT	3000#	FULL		HALF		✓	LEVEL GAUGE
C3a,b	2	21 1/2"	NPT	3000#	FULL		HALF		✓	SIGHT GLASS
C4	1	80 3/4"	NPT	3000#	FULL		HALF		✓	ANNULUS DRAIN c/w PLUG
C5	1	27 3/4"	NPT	3000#	FULL		HALF		✓	TEMPERATURE INDICATOR
C6	1	80 3/4"	NPT	3000#	FULL		HALF		✓	ANNULUS VENT c/w PLUG
T1	1	203 6"							✓	THIEF HATCH
M1	1	2'x3'							✓	CLEANOUT c/w SPLIT COVER

MATERIAL LIST

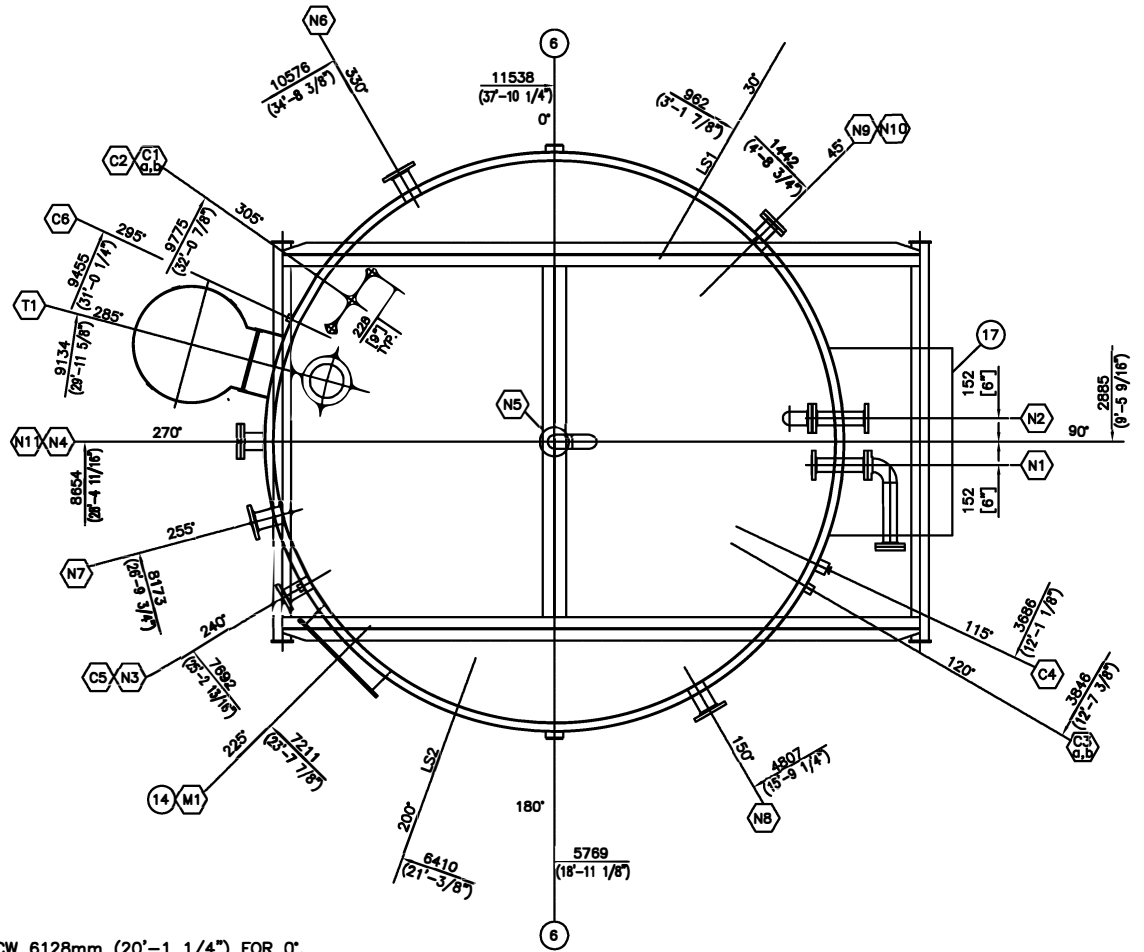
MK#	QTY.	DESCRIPTION	MATERIAL	WT.
1	2	SHELL PLATE: 3/16" th. X 5'-0" X 38'-9" I.G.	G40.21-44W	3821
2	1	FLOOR PLATE: 1/4" NOM. th. x # 12'-8 3/8"	G40.21-44W	854
3	1	ROOF PLATE: 3/16" NOM. th. x CUT # 12'-5 3/16"	G40.21-44W	628
4	2	INNER SHELL PLATE: 3/16" th. X 5'-0" X 37'-7 9/16" I.G.	G40.21-44W	1772
5	1	INNER FLOOR PLATE: 1/4" NOM. th. x # 12'-2"	G40.21-44W	749
6	2	LIFTING LUGS	STEEL	-
7	1	THIEF HATCH	-	-
8	1	THIEF HATCH NOZZLE	-	-
9	1	MANWAY: 2'-0" X 3'-0" c/w SPLIT COVER	STEEL	-
10	1	2" X 2" X 3/16" ROLLED ANGLE @ 12'-4" O.D.	STEEL	-
11	4	HEATER BRACKETS - FLATBAR 1/4" X 2" (SEE DETAIL)	-	-
12	1	12" X 24" (8000 BTU) CATADYNE HEATER	-	-
13				
14	1	NAMEPLATE c/w BRACKET	-	-
15	1	LADDER: 11'-6" O.A.L. c/w 4'-0" CAGE	-	-
16	1	GAUGE BOARD (cu. m)	-	-
17	1	HEATER BOX - 3'-0" X 3'-3" X 2'-0" (MODIFIED MEDIUM)	-	-
18				
19				
20				
21				
22				
23				
24				
25				
26				
27				
28				
29				
30				
31				
32				
33				
34				
35				
36				
37				
38				
39				
40				
41				
42				
43				

APPURTENANCE & ATTACHMENT WELD DETAILS (NTS)

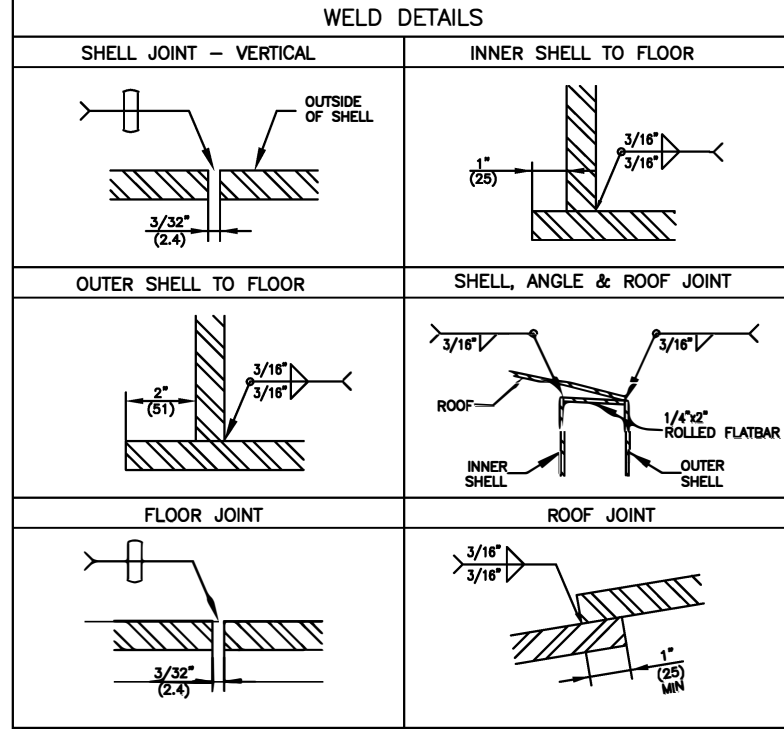
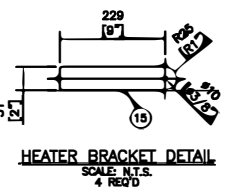
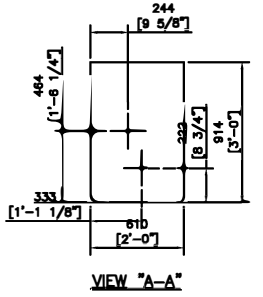
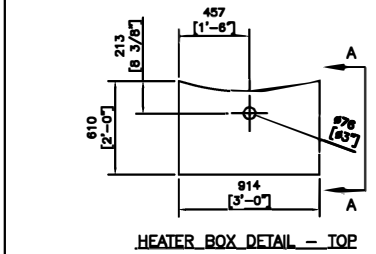


ELEVATION
(NOT TRUE ORIENTATION)

NOTE: 1) PRIMARY TOP FROM LS2, MEASURE CCW 6128mm (20'-1 1/4") FOR 0'.
FROM LS1, MEASURE CCW 919mm (3'-3 3/16") FOR 0'.
2) PRIMARY BOTTOM SECTION FROM 0', MEASURE CW 6894mm (22'-7 3/4") FOR MANWAY.



ORIENTATION
(TRUE ORIENTATION)



NOTES

- ALL FLANGE RATINGS TO BE ANSI B16.5 LATEST EDITION.
- FLANGE AND BOLT HOLES TO STRADDLE PRINCIPLE CENTERLINES.
- INSIDE EDGES OF NOZZLE NECKS, INSPECTION OPENINGS, AND MANWAYS SHALL BE ROUNDED TO A RADIUS OF 1/4" MIN. OR ONE HALF THE WALL THICKNESS IF THE PIPE WALL IS LESS THAN 1/2".
- ALL DIMENSIONS ARE IN MILLIMETERS. DIMENSIONS IN BRACKETS ARE FOR REFERENCE ONLY.
- ALL NOZZLE PROJECTIONS ARE MEASURED ALONG NOZZLE CENTERLINE.

REV.	DESCRIPTION	BY	APP.	DATE YY/MM/DD
0	ISSUED FOR CONSTRUCTION			

PLATINUM
Energy Services Corp.

Mitchell St. N.
Box 1449
Redcliff, Alberta
T0J 2P0

Phone: (403) 548-2857
Fax: (403) 548-2859

200 Bbl DOUBLE WALL TANK
200 Bbl. (31.9 cu. m) CAPACITY
3658mm (12'-0") I.D. x 3048mm (10'-0") HIGH

COMPANY: **REFERANCE DRAWING ONLY** JOB NO.: STOCK

Drawn by: _____ Checked by: _____ DATE: YY/MM/DD SCALE: 1:50 DRAWING NO.: -TK-01 REV.: 0