



Client: Calroc Industries Inc.		Location: Blackfoot Shop		Date: Apr 17, 2026	
Job#: Jason Chetter		Examination Standard: ASME V ARTICLE 4		Dispatch #: 82079	
Procedure: RCSS-UT-14-T001 Rev 03		Acceptance Criteria: Client information		Surface Cond: Painted/Bare Metal	
Item(s): Heater		Material: Carbon Steel		Heat Treatment: N/A	
Method: Thickness	Surface Cond.: Painted/Bare Metal	Thickness (in): =/> .100"		Surface Temp. (°C): 0	
Equipment: Olympus	Model: 38DL Plus	Serial #: 203665008		Cal. Due Date: 2027-03-31	
Cal. Block(s): #12-2511: 5-Step Wedge Steel;		Inspection Surface: OD&I D	Couplant: UTX		Batch #: 1000155
		Cable Type: Coaxial		Length: 3'	

**Calibrated test equipment was visually inspected for damage prior to use and found to be acceptable. Damaged equipment found to be unfit has not been used and has been reported for disposition: yes

Ultrasonic Transducers					Calibration Settings					
Test Angle	Type	Frequency (MHz)	Serial #	Diameter	Reference Reflector	Reference		Scan Sensitivity	Transfer Loss Value	Range
						dB	% FSH			
0°	Dual	5.00 MHz	1079344	0.500"	1st BW	60	80	0	0	1.5"

Testing Results:

Detailed Report Attached

Testing Limitations: No					Continuance Report: PDF Attachment(s)						
Unit #: 105		KMs: 20		LOA: No		Interpreter: Kyle Hope (Sign):					
Technician Time				Assistant Time				KH — APPLIED ON 2026-04-19			
Reg: 6	OT1: 0	OT2: 0	Shift: 0	Reg: 6	OT1: 0	OT2: 0	Shift: 0	CGSB #: 18830	CGSB Level: 1	SNT-TC-1A Level: 1	
Consumables (Item x Qty): Standard Couplant Hours x 6.0;					I am in full agreement with the contents and charges applicable to this report.						
Personnel: Kyle Hope, Josh Fancey					Client (Print):					Date:	
					Client (Sign):						



Calroc

CLIENT COPY

Location: Blackfoot

Firetube

Location	Description	Material	Nominal	Top	East/North	Bottom	West/South	Comments:
UT-01	Fire Tube Tube Sheet	Carbon Steel	N/A	N/A	0.360"	N/A	N/A	
UT-02	Fire Tube Straight	Carbon Steel	N/A	0.224"	0.312"	0.308"	0.227"	
UT-03	Fire Tube Straight	Carbon Steel	N/A	0.314"	0.253"	0.305"	0.268"	
UT-04	Fire Tube Straight	Carbon Steel	N/A	0.266"	0.264"	0.295"	0.220"	
UT-05	Fire Tube Straight	Carbon Steel	N/A	0.278"	0.289"	0.308"	0.227"	
UT-06	Miter	Carbon Steel	N/A	N/A	0.311"	N/A	N/A	
UT-07	Miter	Carbon Steel	N/A	0.249"	0.258"	0.302"	0.228"	
UT-08	Miter	Carbon Steel	N/A	N/A	N/A	N/A	0.318"	
UT-09	Fire Tube Straight	Carbon Steel	N/A	0.246"	0.247"	0.293"	0.258"	
UT-10	Fire Tube Straight	Carbon Steel	N/A	0.233"	0.275"	0.296"	0.243"	
UT-11	Fire Tube Straight	Carbon Steel	N/A	0.249"	0.228"	0.298"	0.254"	
UT-12	Fire Tube Straight	Carbon Steel	N/A	0.214"	0.264"	0.249"	0.253"	

Heating Coil

Location	Description	Material	Nominal	East	West	Comments:
UT-13	6" Elbow	Carbon Steel	N/A	0.389"	0.352"	
UT-14	6" Elbow	Carbon Steel	N/A	0.725"	0.895"	
UT-15	6" Elbow	Carbon Steel	N/A	0.775"	0.771"	
UT-16	6" Elbow	Carbon Steel	N/A	0.725"	0.742"	
UT-17	6" Elbow	Carbon Steel	N/A	0.388"	0.396"	
UT-18	6" Elbow	Carbon Steel	N/A	0.711"	0.858"	
UT-19	6" Elbow	Carbon Steel	N/A	0.396"	0.417"	
UT-20	6" Elbow	Carbon Steel	N/A	0.836"	0.901"	
UT-21	6" Elbow	Carbon Steel	N/A	0.749"	0.705"	
UT-22	6" Elbow	Carbon Steel	N/A	0.830"	0.732"	

Shell Courses

Location	Description	Material	Nominal	Top	East	Bottom	West	Comments:
UT-23	Bridle Shell	Carbon Steel	N/A	N/A	0.246"	0.251"	0.245"	
UT-24	2" OD Elbow	Carbon Steel	N/A	N/A	0.237"	0.239"	0.239"	
UT-25	Bridle Head	Carbon Steel	N/A	N/A	0.255"	0.251"	0.250"	
UT-26	Bridle Shell	Carbon Steel	N/A	N/A	0.241"	0.246"	0.247"	



Calroc

Location: Blackfoot

Attached Piping

Location	Description	Material	Nominal	Reading	Comments:
UT-27	3" Elbow	Carbon Steel	N/A	0.204"	
UT-28	3" Elbow	Carbon Steel	N/A	0.215"	
UT-29	6" Nozzle	Carbon Steel	N/A	0.446"	
UT-30	6" Nozzle	Carbon Steel	N/A	0.709	
UT-31	6" Nozzle	Carbon Steel	N/A	0.714"	
UT-32	6" Nozzle	Carbon Steel	N/A	0.417"	
UT-33	6" -> 3" Reducer	Carbon Steel	N/A	0.459"	
UT-34	3" Elbow	Carbon Steel	N/A	0.287"	
UT-35	6" Elbow	Carbon Steel	N/A	0.432"	
UT-36	6" Elbow	Carbon Steel	N/A	0.408"	
UT-37	6" Elbow	Carbon Steel	N/A	0.398"	
UT-38	6" Tee	Carbon Steel	N/A	0.644"	
UT-39	6" Elbow	Carbon Steel	N/A	0.402"	
UT-40	6" Elbow	Carbon Steel	N/A	0.859"	
UT-41	6" Elbow	Carbon Steel	N/A	0.360"	

Fuel Gas Scrubber

Location	Description	Material	Nominal	Reading	Comments:
UT-42	Bottom	Carbon Steel	N/A	0.757"	
UT-43	Side	Carbon Steel	N/A	0.339"	
UT-44	Top	Carbon Steel	N/A	0.776"	

Calroc

Location: Blackfoot

Inspection Locations



Vessel Overview



Data Plate



Data Plate



Coil Overview

Calroc

Location: Blackfoot

Inspection Locations



Internal Overview



Coil Overview



North Drain Elbow



South Drain Elbow

Calroc

Location: Blackfoot

Inspection Locations



Piping Overview



Piping Overview



Piping Overview



Piping Overview

Calroc

Location: Blackfoot

Inspection Locations



Vessel and Firetube Overview



Firetube Overview

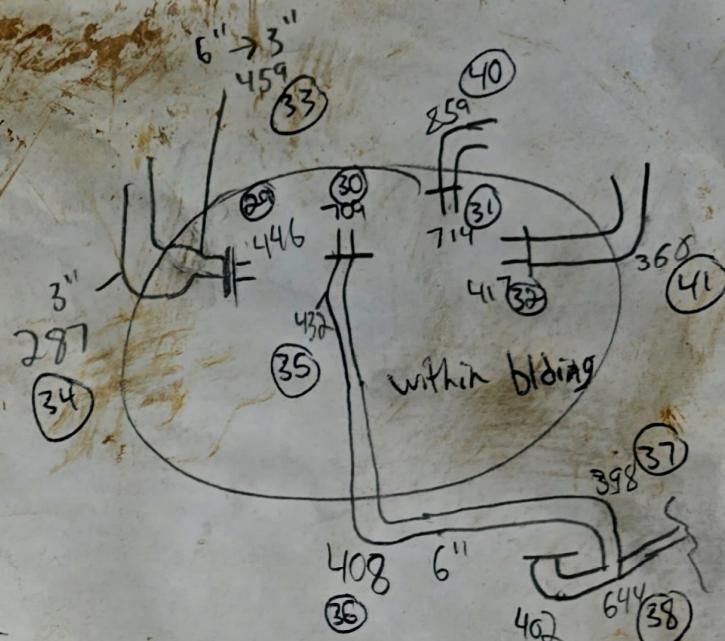
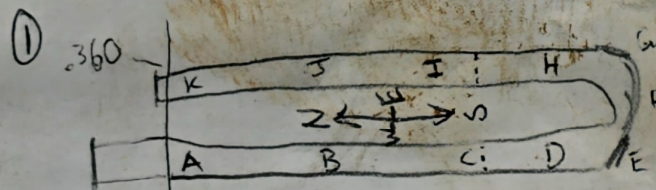


Fuel Gas Scrubber Data Plate

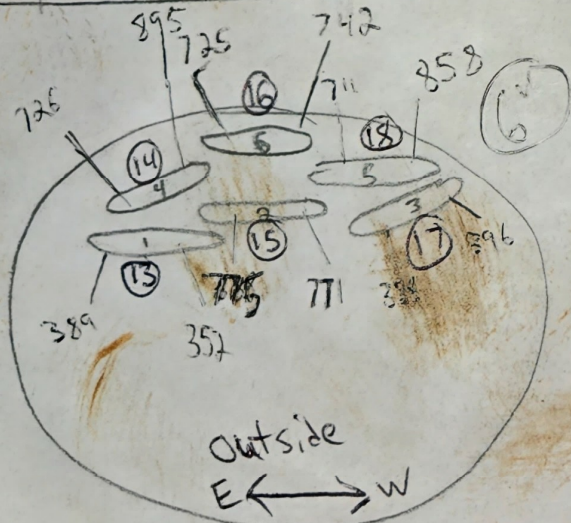
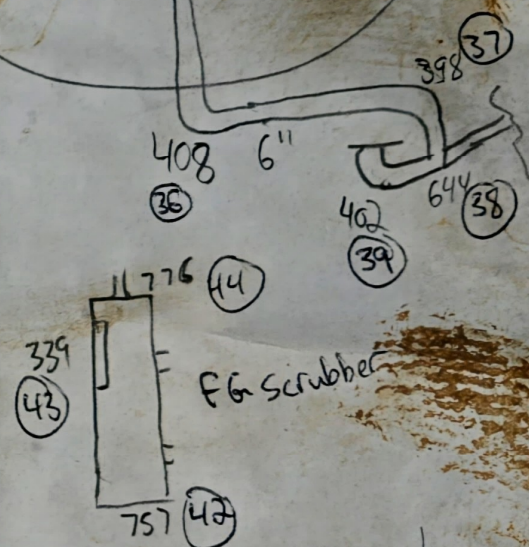
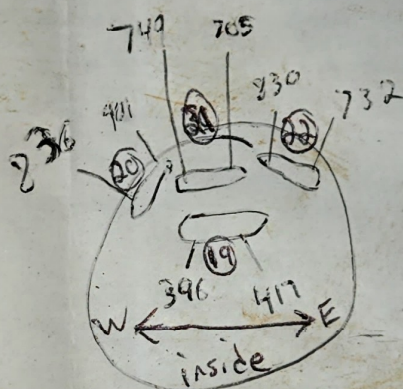


Fuel Gas Scrubber Overview

fire tube



	Top	East / North	bottom	west / South
② A	224	312	308	309
③ B	314	253	305	268
④ C	266	264	295	230
⑤ D	278	289	308	227
⑥ E	311			
⑦ F	279	258	302	228
⑧ G	318	258		
⑨ H	246	247	293	258
⑩ I	233	275	296	243
⑪ J	249	278	298	254
⑫ K	214	264	249	253



	1	2	3	4
Shell Courses				

	②③	②④	②⑤	②⑥	②⑧
Course 1	2	3	4	215	
Bottom	251	239	251	246	
East	246	237	255	241	
West	245	234	250	247	