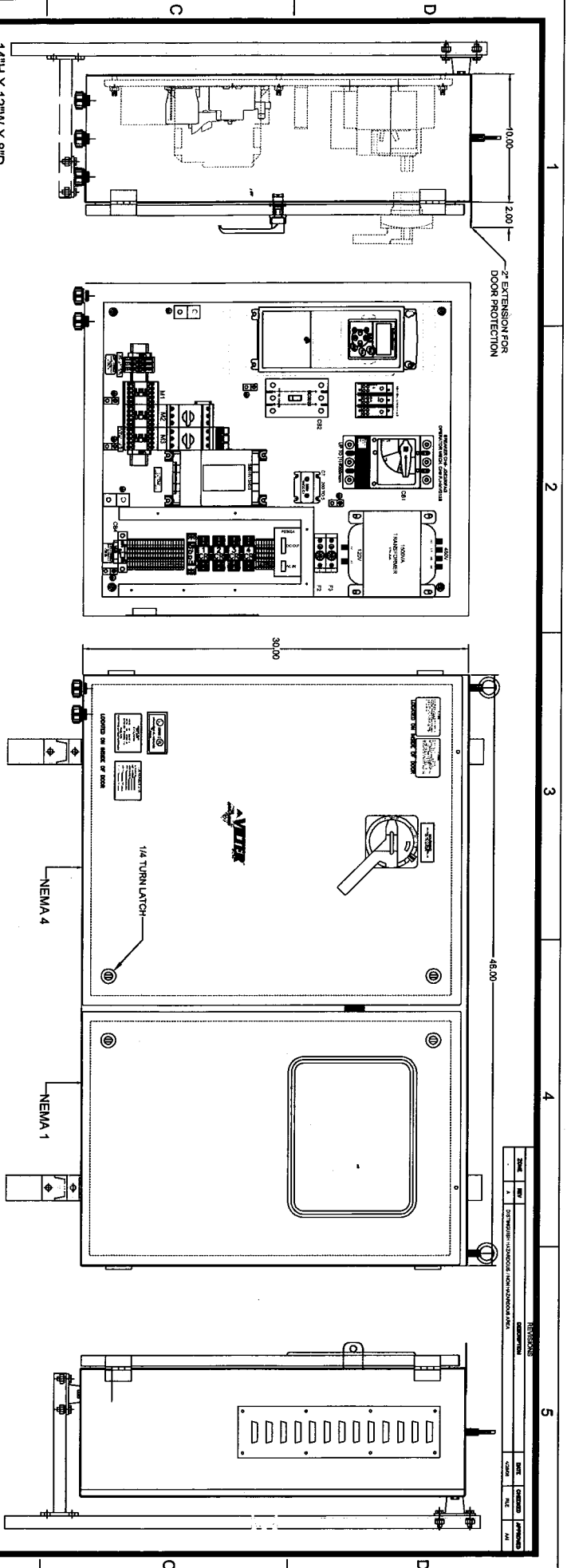
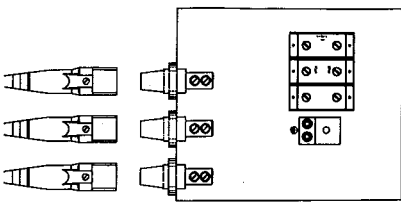


| REVISIONS | | DATE | BY | DESCRIPTION |
|-----------|----------|------|----|-------------|
| 1 | AS SHOWN | | | |
| 2 | REVISED | | | |

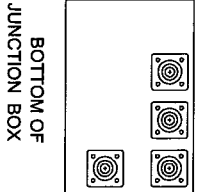


14" H X 12" W X 8" D
JUNCTION BOX

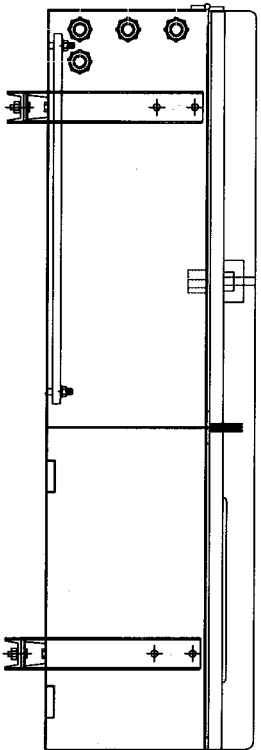


35' POWER FEED
(3) 1 / 0, (1) 1 / 0 GND

NOTE:
* PLUGS TO BE COLOR CODED,
BLACK, WHITE, RED, GREEN.



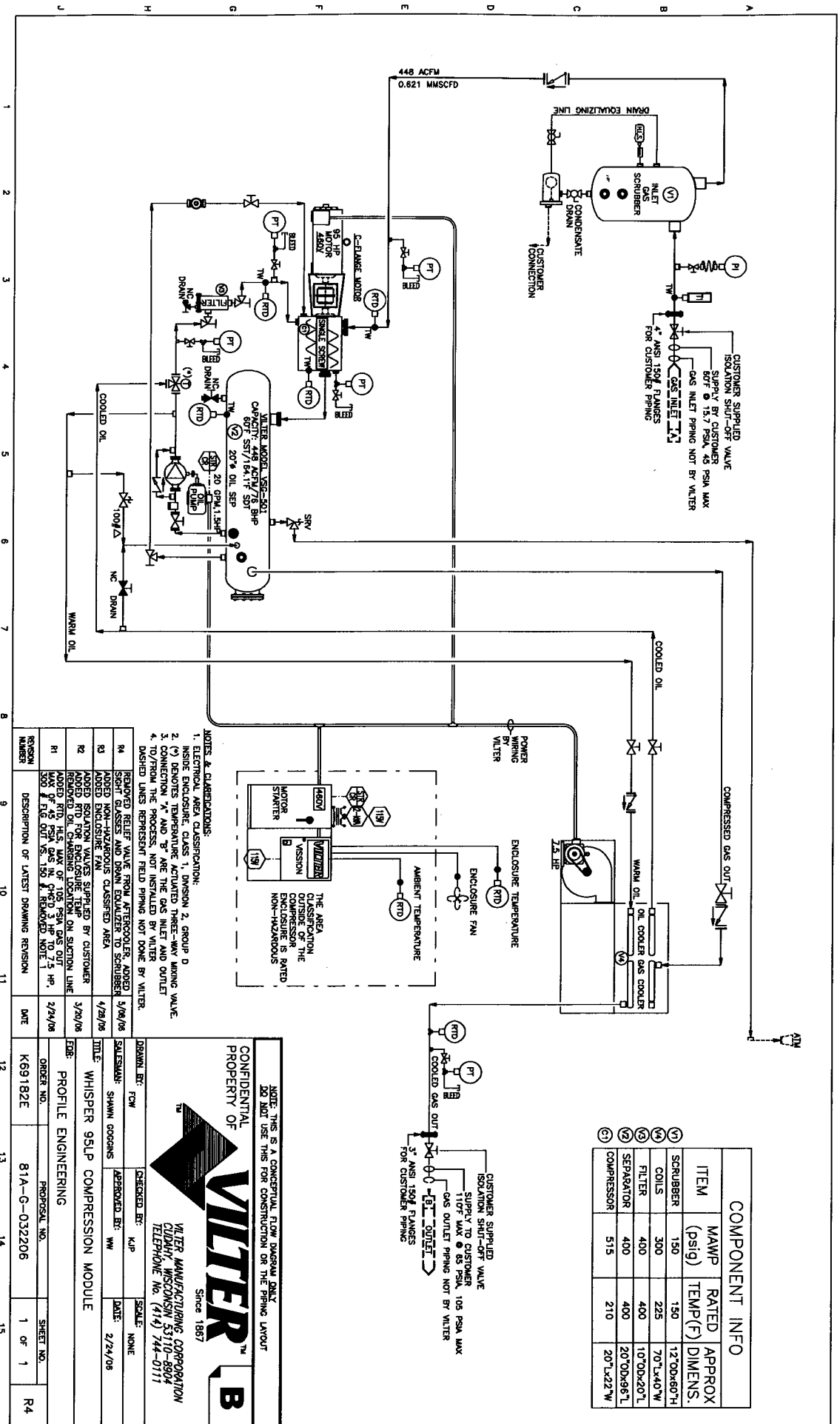
BOTTOM OF
JUNCTION BOX



NOTE:
* PANEL TO BE DESIGNED PER CSA &
UL REQUIREMENTS.
* PANEL LABELING TO BE PER CSA &
UL REQUIREMENTS.
* THIS PANEL IS MOUNTED OUTSIDE
THE COMPRESSOR ENCLOSURE IN
A NON HAZARDOUS AREA.

PAINTED STEEL
30" H X 46" W X 10" D CONTROL PANEL
WITH (1) - 20" W COMPARTMENT
AND (1) 26" COMPARTMENT

| | | |
|---|--------------|----------------------|
| AAIM ORDER # | Purchased by | WALTER MANUFACTURING |
| CUSTOMER PO # | Forwarded by | |
| CUSTOMER ITEM # | Address | |
| Information on this drawing is not an indication of the material supplied. Refer to details or material included. | | |
| Drawing by | RLE | 3/10/08 |
| Approved by | AAIM | 3/10/08 |
| AAIM Controls Inc. | | |
| STARTER PANEL | | |
| 95 HP IN-LINE | | |
| SOFT STARTER WITH VISSION | | |
| 501-0799 | | |



COMPONENT INFO

| ITEM | MAMP (psig) | RATED TEMP(F) | APPROX DIMENS. |
|----------------|-------------|---------------|----------------|
| (1) SCRUBBER | 150 | 150 | 12"ODx60"H |
| (4) COILS | 300 | 225 | 70"Lx40"W |
| (3) FILTER | 400 | 400 | 10"ODx20"L |
| (2) SEPARATOR | 400 | 400 | 20"ODx96"L |
| (5) COMPRESSOR | 515 | 210 | 20"Lx22"W |

- NOTES & CLARIFICATIONS:**
- ELECTRICAL WEA CLASSIFICATION:
 - INSIDE ENCLOSURE CLASS 1, DIVISION 2, GROUP D
 - ENCLOSURE IS RATED FOR WASHING WATER
 - CONNECTION "A" AND "B" ARE MADE BY VALTER
 - TO/FROM THE PROCESS, FIELD PIPING NOT DONE BY VALTER.

- REMOVED RELIEF VALVE FROM ATTORSEVER. ADDED SIGHT GLASSES AND DRAIN EQUALIZER TO SCRUBBER**
- ADDED NON-HAZARDOUS CLASSIFIED AREA
 - ADDED ISOLATION VALVES SUPPLIED BY CUSTOMER
 - ADDED RTD FOR AMBIENT TEMPERATURE ON SUCION LINE
 - WAVE OF 45 PSIA MAX IN CHOC 3 HP TO 7.5 HP, 500 LBS OUT VS 150 LBS. REMOVED NOTE 1

| REVISION NUMBER | DESCRIPTION OF LATEST DRAWING REVISION | DATE |
|-----------------|---|---------|
| R4 | ADDED ISOLATION VALVES SUPPLIED BY CUSTOMER | 3/20/06 |
| R3 | ADDED RTD FOR AMBIENT TEMPERATURE ON SUCION LINE | 1/22/06 |
| R2 | ADDED NON-HAZARDOUS CLASSIFIED AREA | 3/20/06 |
| R1 | REMOVED RELIEF VALVE FROM ATTORSEVER. ADDED SIGHT GLASSES AND DRAIN EQUALIZER TO SCRUBBER | 2/24/06 |



VALTER MANUFACTURING CORPORATION
 CLUMBY, WISCONSIN 53110-8904
 TELEPHONE No. (414) 744-0111

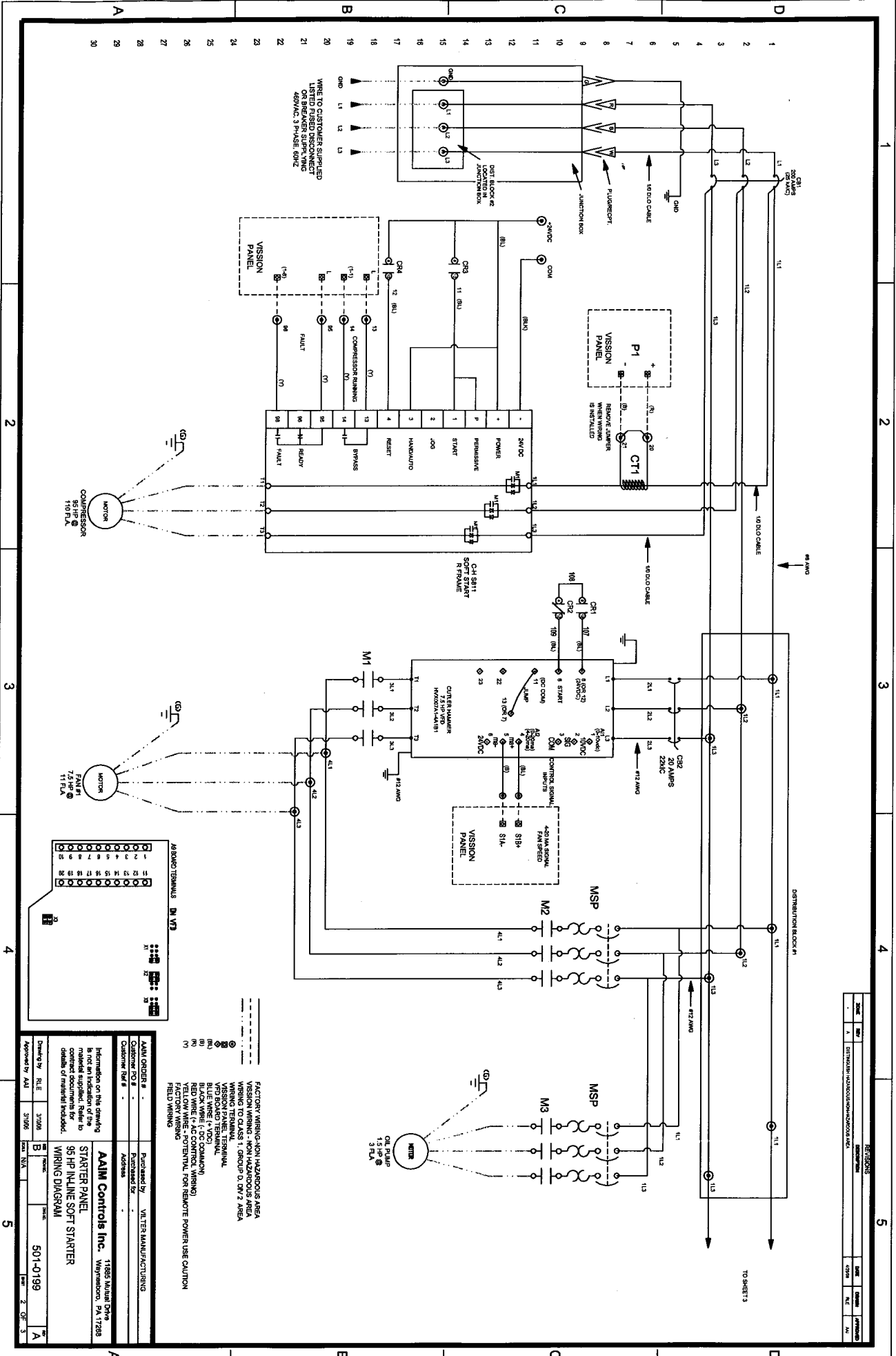
CONFIDENTIAL
 PROPERTY OF
 VALTER

NOTE: THIS IS A CONCEPTUAL FLOW DIAGRAM ONLY.
 DO NOT USE THIS FOR CONSTRUCTION OR THE PIPING LAYOUT

| | | |
|--|-----------------------------|-------------------|
| DESIGN BY: FCW | CHECKED BY: KJP | SCALE: NONE |
| SALESMAN: SHAWN GOGGINS | APPROVED BY: WW | DATE: 2/24/06 |
| TITLE: WHISPER 95LP COMPRESSION MODULE | | |
| EGR: PROFILE ENGINEERING | | |
| ORDER NO.: K69182E | PROPOSAL NO.: 81A-G-0322206 | SHEET NO.: 1 of 1 |
| | | R4 |

IN CONSIDERATION ON THE RECEIPT OF THIS DOCUMENT, THE RECIPIENT AGREES NOT TO REPRODUCE, COPY, USE OR TRANSMIT THIS DOCUMENT AND FURTHER AGREES TO MAINTAIN THE INFORMATION THEREIN CONFIDENTIAL, IN WHOLE OR IN PART, OR TO ALTER, MODIFY, OR DISSEMINATE THE INFORMATION IN ANY MANNER WITHOUT THE WRITTEN PERMISSION OF VALTER MANUFACTURING CORPORATION. VALTER MANUFACTURING CORPORATION, 1000 VALTER DRIVE, CLUMBY, WISCONSIN 53110-8904, TEL: (414) 744-0111.

| DATE | BY | DESCRIPTION |
|------|----|-------------|
| 1 | | |
| 2 | | |



FACTORY WIRING - NON HAZARDOUS AREA
 VISION WIRING - NON HAZARDOUS AREA
 WIRING TO CLASS 1, GROUP 0, DIV 2 AREA

VISION PANEL TERMINAL
 NPT FORGED TERMINAL
 BLACK WIRE (-DC COMMON)
 RED WIRE (+AC CONTROL WIRING)
 FACTORY WIRING
 FIELD WIRING

WIRE TO CUSTOMER SUPPLIED LISTED FUSED DISCONNECT OR BREAKER SUPPLY VOLTAGE APPROX. 3-PHASE 60HZ

REMOVE JUMPER WHEN WIRING IS INSTALLED

AS BOUND TERMINALS IN VP1

| | | | | | | | | | | | | | | | | | | | | | | | | | | | | | |
|---|---|---|---|---|---|---|---|---|----|----|----|----|----|----|----|----|----|----|----|----|----|----|----|----|----|----|----|----|----|
| 1 | 2 | 3 | 4 | 5 | 6 | 7 | 8 | 9 | 10 | 11 | 12 | 13 | 14 | 15 | 16 | 17 | 18 | 19 | 20 | 21 | 22 | 23 | 24 | 25 | 26 | 27 | 28 | 29 | 30 |
|---|---|---|---|---|---|---|---|---|----|----|----|----|----|----|----|----|----|----|----|----|----|----|----|----|----|----|----|----|----|

TO SHEET 3

AAIM Controls Inc. 1888 Mutual Drive
 Weymouth, MA 01978

Customer Ref # -
 Address -
 Purchased by - VATES MANUFACTURING

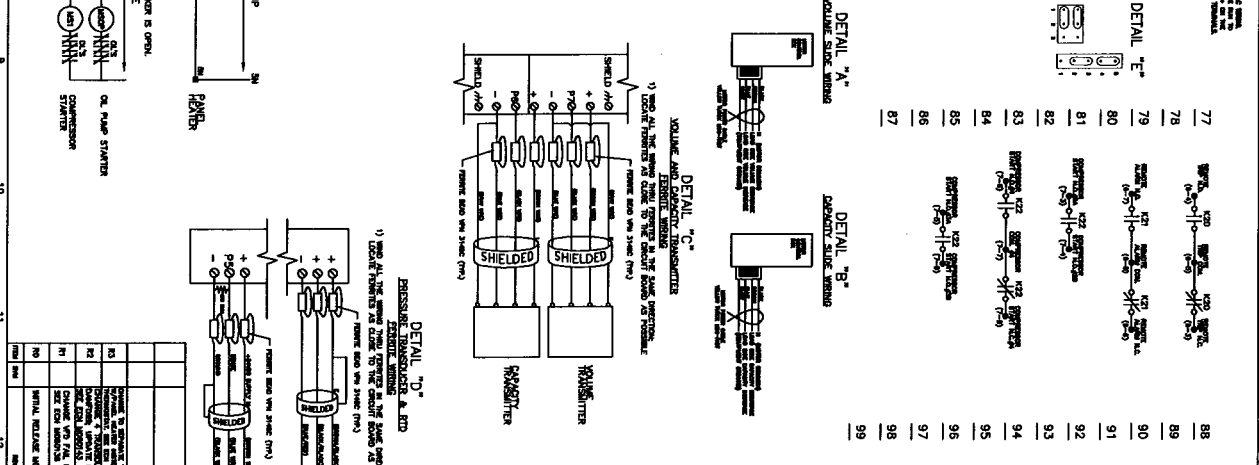
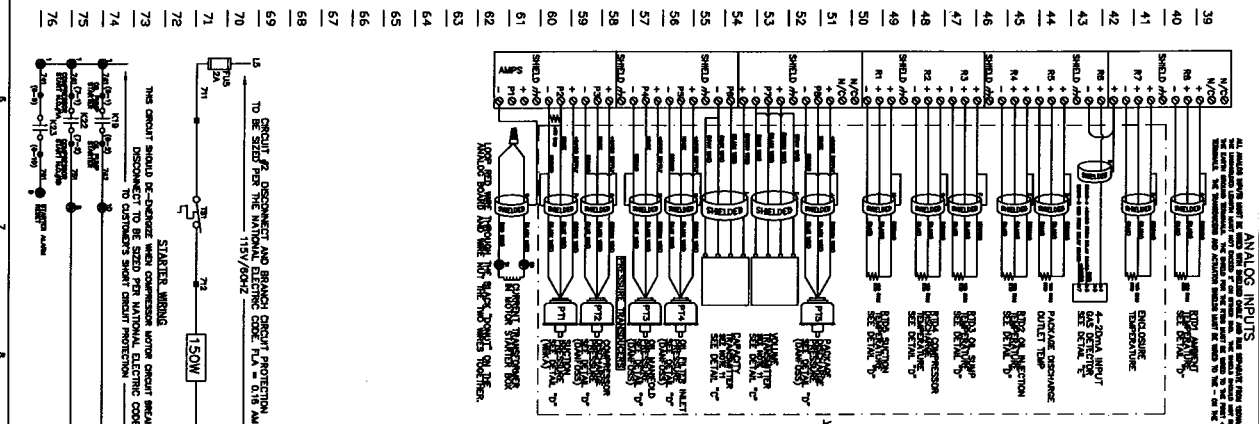
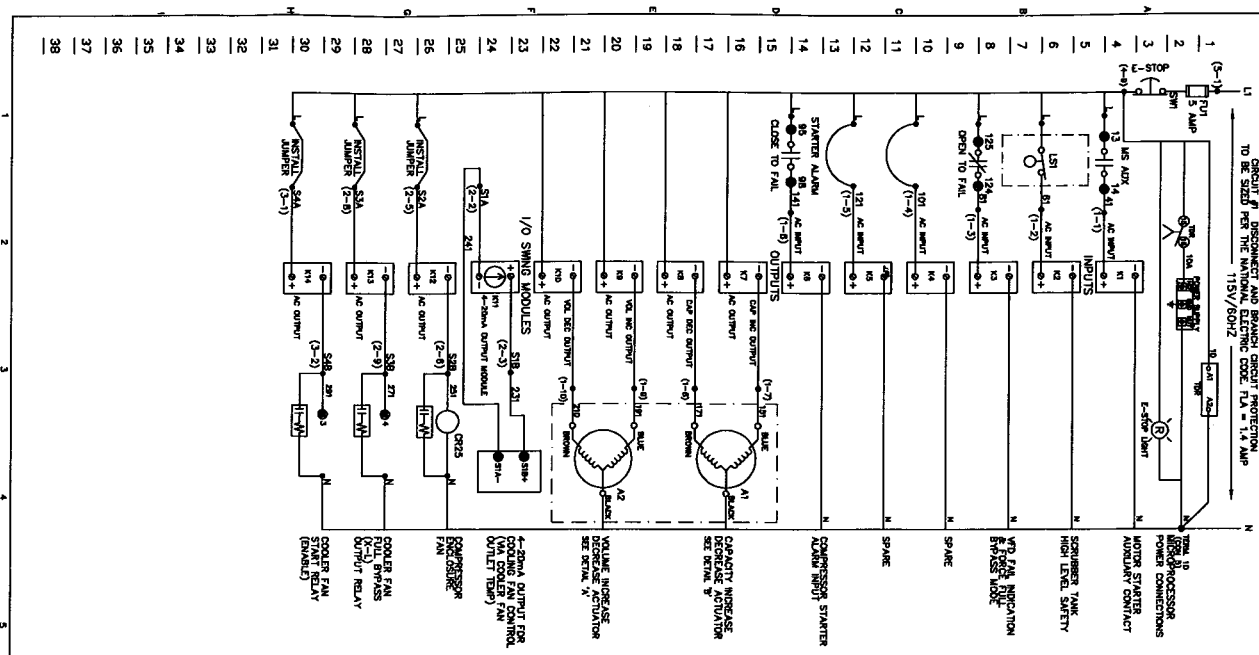
Information on this drawing is not an indication of the material supplied. Refer to contract documents for details of material included.

95 HP INLINE SOFT STARTER
 WIRING DIAGRAM

Drawing by RLE 3/1998
 Checked by B 3/1998
 Approved by AJL 3/1998

501-0199

2 OF 3



CIRCUIT A3 DISCONNECT AND BRANCH CIRCUIT PROTECTION
TO BE SIZED PER THE NATIONAL ELECTRIC CODE (NEC) 1.4 AMP
115V/60HZ

LINEAGE KEY
SHOWS THE LINEAGE FROM THE MAIN TO THE SUBCIRCUIT

NOTES:

- 1) ALL WIRING SHALL BE IN ACCORDANCE WITH THE NATIONAL ELECTRICAL CODE (NEC).
- 2) ALL WIRING SHALL BE IN ACCORDANCE WITH THE MANUFACTURER'S INSTRUCTIONS.
- 3) ALL WIRING SHALL BE IN ACCORDANCE WITH THE VISION MICROPROCESSOR WIRING MANUAL.
- 4) ALL WIRING SHALL BE IN ACCORDANCE WITH THE VISION MICROPROCESSOR WIRING MANUAL.
- 5) ALL WIRING SHALL BE IN ACCORDANCE WITH THE VISION MICROPROCESSOR WIRING MANUAL.
- 6) ALL WIRING SHALL BE IN ACCORDANCE WITH THE VISION MICROPROCESSOR WIRING MANUAL.
- 7) ALL WIRING SHALL BE IN ACCORDANCE WITH THE VISION MICROPROCESSOR WIRING MANUAL.
- 8) ALL WIRING SHALL BE IN ACCORDANCE WITH THE VISION MICROPROCESSOR WIRING MANUAL.
- 9) ALL WIRING SHALL BE IN ACCORDANCE WITH THE VISION MICROPROCESSOR WIRING MANUAL.
- 10) ALL WIRING SHALL BE IN ACCORDANCE WITH THE VISION MICROPROCESSOR WIRING MANUAL.

ALL AC WIRING TO BE RUN INTO AND ON LEFT SIDE OF PANEL AND ON RIGHT SIDE OF PANEL AND ON RIGHT SIDE OF PANEL

VISION MICROPROCESSOR
VSC-501-VAR-NG-H-NEC-REM

VITER
VISION MICROPROCESSOR
3011S

DATE: 8/21/2004
BY: [Signature]
PROJECT: VISION MICROPROCESSOR

682012-1 R3