

CES#1600 - 100HP Pump Package

National Oilwell 100T-4L Injection Pump Package



General Configuration

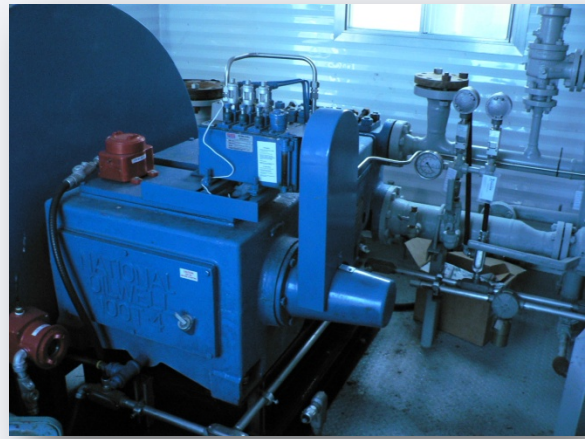
Location	: Nisku, AB
Availability	: Stock (subject to plunger availability)
Service	: Sour
Driver/Manufacturer	: 100HP TEFC 1775RPM Electric Motor
Driven/Manufacturer	: National 100T-4L
Charge Pump	: Grundfos CR32-2-2
Filter	: 3 Bag Filter Housing (P2 Bags)

Triplex Pump and Motor

One National 100T-4L Triplex Pump (has seen limited use)

Client Choice of Plungers from 2.5" to 3.375"

- 3 Feed Lubricator w/ 15 Gallon Oil Reservoir
- Two (2) NEW CoorsTek Pulsation Stabilizers; 6" x 150# x 300 cu. Inch – Suction & 3" x 600# x 300cu Inch - Discharge
- 100HP TEFC 1775 RPM Electric Motor
- 6 Month Warranty on National pump
- Pump/Motor mounted on sub assembly skid & attached to main skid



Charge Pump (NEW)

One (1) Grundfoss CR32-2-2 Charge Pump

Sour Service Materials

7.5HP TEFC Electric Motor

Filter:

One (1) Mar-Quinn 3 Bag Filter

250psig @ -20°F / 100°F

1/8" CA

100% X-Ray and Stress Relieved

3" 150# Inlet

3" 150# Outlet



Instrumentation:

DI-600 (Differential Pressure Indicator)

FE-200 (Discharge Flow Meter)

FQI-6010 (Flow Totalizer)

LSL 6010– (Low Oil Level Shutdown)

PI-100 (Filter Pressure Indicator)

PI-6000 (Suction Pressure)

PI-6001 (Suction Pressure to 100T Pump)

PI-6010 (Discharge Pressure Indicator)

PSH-200 (Discharge Pressure Shutdown High)

PSL-6000 (Suction Pressure Shutdown Low)

PSL-6001 (Suction Pressure Shutdown Low)

PSH-6001 (Suction Pressure Shutdown High)

PSV-6000 (Pressure Safety Valve)

PSV-6010 (Pressure Safety Valve)

VSH-6010 (Pump Vibration Switch)

LS-6000 (Sump Level)

AE-6000 (LEL Detection)

AE-6010 (H2S Detection)



PLC

- Allen Bradley PanelView 300 PLC Panel c/w H2S Beacon

Piping:

- Suction Piping 150#ANSI
 - Isolation Valves and bypass around 3 Bag Filter
 - 2.5" 150# ANSI Charge Pump
- NEW Discharge Piping 3" 600#ANSI
- 1" globe valve start up bypass
- 2" 2000# Floor Drain
- 1" 2000# Drain
- 6 TOL's on Suction Line, Discharge Line Fully Flanged

Skid and Building:

- 12' Wide x 15' Long (skid is 17' long including lifting eyes)
- One (1) Set of Double Man Doors w/ Windows
- Two (2) Sliding Windows
- 15" x 36" Sump with 2" Drain to Skid Edge
- Under-skid Insulation
- New FX4-480-360-100T Electric Heater
- Exhaust Fan
- Interior and Exterior Lights w/ Switch
- H2S Detection wired to JB
- LEL Detection wired to JB
- Checker plate Floor

Other Notes

- Documentation:
 - One (1) Quality Assurance Manual c/w
 - Updated Drawings (P+ID, GA, Spools etc.)

