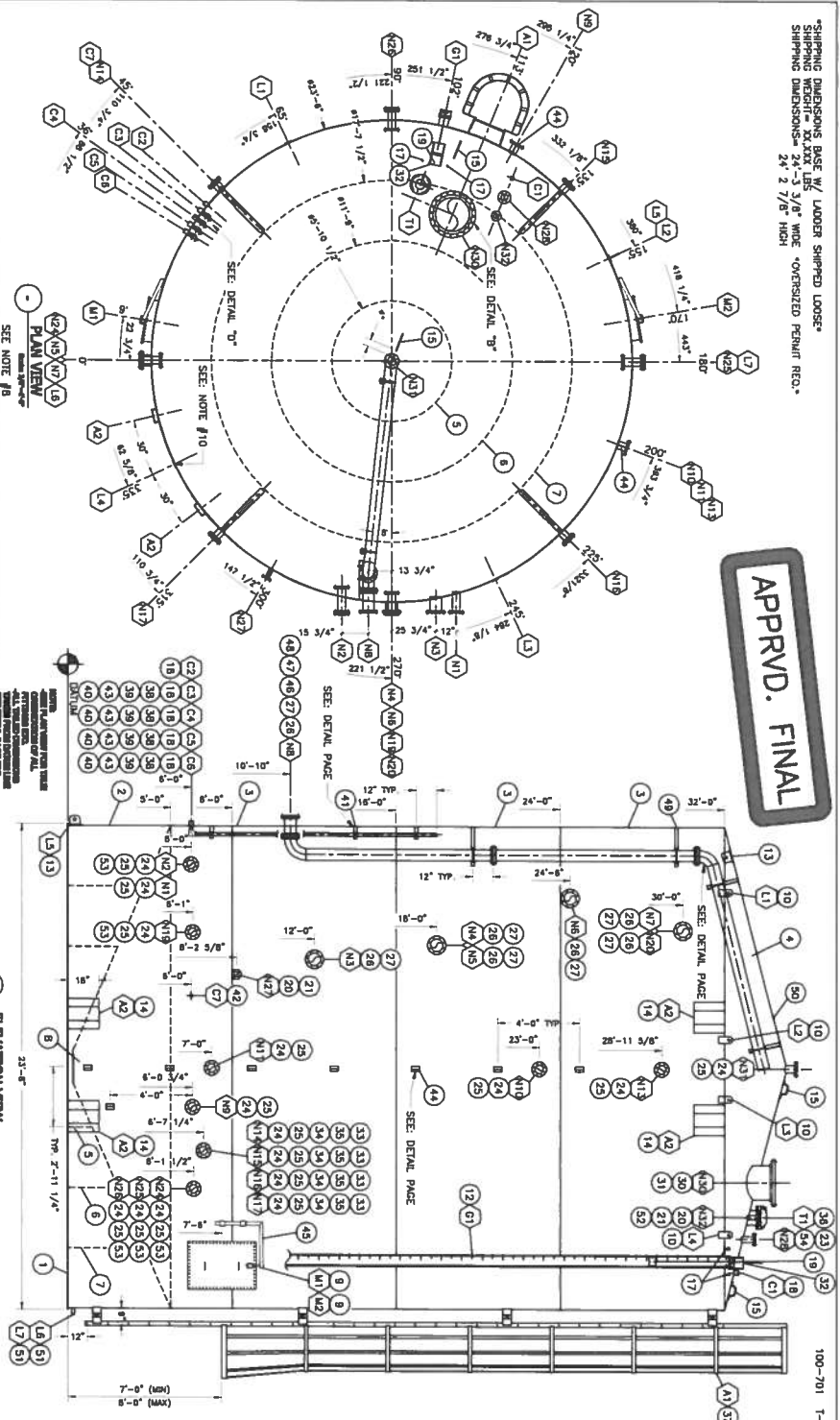


SHIPPING DIMENSIONS BASE W/ LOADER SHIPPED LOOSE
 SHIPPING WEIGHT 23,000 LBS
 SHIPPING DIMENSIONS - 24'-3 7/8" WIDE OVERSIZED PERMIT REQ.
 24' 2 7/8" HIGH

APPRVD. FINAL



NO.	QTY	DESCRIPTION	UNIT	AS SHOWN	REV.	DATE	BY	CHKD	APP'D
1	1	1/2" DIA. STEEL PIPE	LN	1	0	08/19/2011	ES	ES	
2	1	1/2" DIA. STEEL PIPE	LN	1	0	08/19/2011	ES	ES	
3	1	1/2" DIA. STEEL PIPE	LN	1	0	08/19/2011	ES	ES	
4	1	1/2" DIA. STEEL PIPE	LN	1	0	08/19/2011	ES	ES	
5	1	1/2" DIA. STEEL PIPE	LN	1	0	08/19/2011	ES	ES	
6	1	1/2" DIA. STEEL PIPE	LN	1	0	08/19/2011	ES	ES	
7	1	1/2" DIA. STEEL PIPE	LN	1	0	08/19/2011	ES	ES	
8	1	1/2" DIA. STEEL PIPE	LN	1	0	08/19/2011	ES	ES	
9	1	1/2" DIA. STEEL PIPE	LN	1	0	08/19/2011	ES	ES	
10	1	1/2" DIA. STEEL PIPE	LN	1	0	08/19/2011	ES	ES	
11	1	1/2" DIA. STEEL PIPE	LN	1	0	08/19/2011	ES	ES	
12	1	1/2" DIA. STEEL PIPE	LN	1	0	08/19/2011	ES	ES	
13	1	1/2" DIA. STEEL PIPE	LN	1	0	08/19/2011	ES	ES	
14	1	1/2" DIA. STEEL PIPE	LN	1	0	08/19/2011	ES	ES	
15	1	1/2" DIA. STEEL PIPE	LN	1	0	08/19/2011	ES	ES	
16	1	1/2" DIA. STEEL PIPE	LN	1	0	08/19/2011	ES	ES	
17	1	1/2" DIA. STEEL PIPE	LN	1	0	08/19/2011	ES	ES	
18	1	1/2" DIA. STEEL PIPE	LN	1	0	08/19/2011	ES	ES	
19	1	1/2" DIA. STEEL PIPE	LN	1	0	08/19/2011	ES	ES	
20	1	1/2" DIA. STEEL PIPE	LN	1	0	08/19/2011	ES	ES	
21	1	1/2" DIA. STEEL PIPE	LN	1	0	08/19/2011	ES	ES	
22	1	1/2" DIA. STEEL PIPE	LN	1	0	08/19/2011	ES	ES	
23	1	1/2" DIA. STEEL PIPE	LN	1	0	08/19/2011	ES	ES	
24	1	1/2" DIA. STEEL PIPE	LN	1	0	08/19/2011	ES	ES	
25	1	1/2" DIA. STEEL PIPE	LN	1	0	08/19/2011	ES	ES	
26	1	1/2" DIA. STEEL PIPE	LN	1	0	08/19/2011	ES	ES	
27	1	1/2" DIA. STEEL PIPE	LN	1	0	08/19/2011	ES	ES	
28	1	1/2" DIA. STEEL PIPE	LN	1	0	08/19/2011	ES	ES	
29	1	1/2" DIA. STEEL PIPE	LN	1	0	08/19/2011	ES	ES	
30	1	1/2" DIA. STEEL PIPE	LN	1	0	08/19/2011	ES	ES	
31	1	1/2" DIA. STEEL PIPE	LN	1	0	08/19/2011	ES	ES	
32	1	1/2" DIA. STEEL PIPE	LN	1	0	08/19/2011	ES	ES	
33	1	1/2" DIA. STEEL PIPE	LN	1	0	08/19/2011	ES	ES	
34	1	1/2" DIA. STEEL PIPE	LN	1	0	08/19/2011	ES	ES	
35	1	1/2" DIA. STEEL PIPE	LN	1	0	08/19/2011	ES	ES	
36	1	1/2" DIA. STEEL PIPE	LN	1	0	08/19/2011	ES	ES	
37	1	1/2" DIA. STEEL PIPE	LN	1	0	08/19/2011	ES	ES	
38	1	1/2" DIA. STEEL PIPE	LN	1	0	08/19/2011	ES	ES	
39	1	1/2" DIA. STEEL PIPE	LN	1	0	08/19/2011	ES	ES	
40	1	1/2" DIA. STEEL PIPE	LN	1	0	08/19/2011	ES	ES	
41	1	1/2" DIA. STEEL PIPE	LN	1	0	08/19/2011	ES	ES	
42	1	1/2" DIA. STEEL PIPE	LN	1	0	08/19/2011	ES	ES	
43	1	1/2" DIA. STEEL PIPE	LN	1	0	08/19/2011	ES	ES	
44	1	1/2" DIA. STEEL PIPE	LN	1	0	08/19/2011	ES	ES	
45	1	1/2" DIA. STEEL PIPE	LN	1	0	08/19/2011	ES	ES	
46	1	1/2" DIA. STEEL PIPE	LN	1	0	08/19/2011	ES	ES	
47	1	1/2" DIA. STEEL PIPE	LN	1	0	08/19/2011	ES	ES	
48	1	1/2" DIA. STEEL PIPE	LN	1	0	08/19/2011	ES	ES	
49	1	1/2" DIA. STEEL PIPE	LN	1	0	08/19/2011	ES	ES	
50	1	1/2" DIA. STEEL PIPE	LN	1	0	08/19/2011	ES	ES	

NOTES:

1. BUILD IN ACCORDANCE WITH API-650 WORKED CODE AND CLIENT
2. ALL WELDS TO BE FULL PENETRATION
3. ALL WELDS TO BE FULL PENETRATION
4. ALL WELDS TO BE FULL PENETRATION
5. ALL WELDS TO BE FULL PENETRATION
6. ALL WELDS TO BE FULL PENETRATION
7. ALL WELDS TO BE FULL PENETRATION
8. ALL WELDS TO BE FULL PENETRATION
9. ALL WELDS TO BE FULL PENETRATION
10. REMOVE EXISTING LINES AND PLACE AS SHOWN.

REVISIONS:

NO.	DATE	DESCRIPTION	BY	CHKD
1	10/19/2011	CHANGE COLLAR LOCATION	ES	ES
2	10/19/2011	CHANGE AS PER REQUESTED	ES	ES
3	10/11/2011	CHANGE AS PER REQUESTED	ES	ES
4	08/19/2011	ISSUED FOR CONSTRUCTION	ES	ES

NO.	QTY	DESCRIPTION	UNIT	AS SHOWN	REV.	DATE	BY	CHKD	APP'D
1	1	1/2" DIA. STEEL PIPE	LN	1	0	08/19/2011	ES	ES	
2	1	1/2" DIA. STEEL PIPE	LN	1	0	08/19/2011	ES	ES	
3	1	1/2" DIA. STEEL PIPE	LN	1	0	08/19/2011	ES	ES	
4	1	1/2" DIA. STEEL PIPE	LN	1	0	08/19/2011	ES	ES	
5	1	1/2" DIA. STEEL PIPE	LN	1	0	08/19/2011	ES	ES	
6	1	1/2" DIA. STEEL PIPE	LN	1	0	08/19/2011	ES	ES	
7	1	1/2" DIA. STEEL PIPE	LN	1	0	08/19/2011	ES	ES	
8	1	1/2" DIA. STEEL PIPE	LN	1	0	08/19/2011	ES	ES	
9	1	1/2" DIA. STEEL PIPE	LN	1	0	08/19/2011	ES	ES	
10	1	1/2" DIA. STEEL PIPE	LN	1	0	08/19/2011	ES	ES	
11	1	1/2" DIA. STEEL PIPE	LN	1	0	08/19/2011	ES	ES	
12	1	1/2" DIA. STEEL PIPE	LN	1	0	08/19/2011	ES	ES	
13	1	1/2" DIA. STEEL PIPE	LN	1	0	08/19/2011	ES	ES	
14	1	1/2" DIA. STEEL PIPE	LN	1	0	08/19/2011	ES	ES	
15	1	1/2" DIA. STEEL PIPE	LN	1	0	08/19/2011	ES	ES	
16	1	1/2" DIA. STEEL PIPE	LN	1	0	08/19/2011	ES	ES	
17	1	1/2" DIA. STEEL PIPE	LN	1	0	08/19/2011	ES	ES	
18	1	1/2" DIA. STEEL PIPE	LN	1	0	08/19/2011	ES	ES	
19	1	1/2" DIA. STEEL PIPE	LN	1	0	08/19/2011	ES	ES	
20	1	1/2" DIA. STEEL PIPE	LN	1	0	08/19/2011	ES	ES	
21	1	1/2" DIA. STEEL PIPE	LN	1	0	08/19/2011	ES	ES	
22	1	1/2" DIA. STEEL PIPE	LN	1	0	08/19/2011	ES	ES	
23	1	1/2" DIA. STEEL PIPE	LN	1	0	08/19/2011	ES	ES	
24	1	1/2" DIA. STEEL PIPE	LN	1	0	08/19/2011	ES	ES	
25	1	1/2" DIA. STEEL PIPE	LN	1	0	08/19/2011	ES	ES	
26	1	1/2" DIA. STEEL PIPE	LN	1	0	08/19/2011	ES	ES	
27	1	1/2" DIA. STEEL PIPE	LN	1	0	08/19/2011	ES	ES	
28	1	1/2" DIA. STEEL PIPE	LN	1	0	08/19/2011	ES	ES	
29	1	1/2" DIA. STEEL PIPE	LN	1	0	08/19/2011	ES	ES	
30	1	1/2" DIA. STEEL PIPE	LN	1	0	08/19/2011	ES	ES	
31	1	1/2" DIA. STEEL PIPE	LN	1	0	08/19/2011	ES	ES	
32	1	1/2" DIA. STEEL PIPE	LN	1	0	08/19/2011	ES	ES	
33	1	1/2" DIA. STEEL PIPE	LN	1	0	08/19/2011	ES	ES	
34	1	1/2" DIA. STEEL PIPE	LN	1	0	08/19/2011	ES	ES	
35	1	1/2" DIA. STEEL PIPE	LN	1	0	08/19/2011	ES	ES	
36	1	1/2" DIA. STEEL PIPE	LN	1	0	08/19/2011	ES	ES	
37	1	1/2" DIA. STEEL PIPE	LN	1	0	08/19/2011	ES	ES	
38	1	1/2" DIA. STEEL PIPE	LN	1	0	08/19/2011	ES	ES	
39	1	1/2" DIA. STEEL PIPE	LN	1	0	08/19/2011	ES	ES	
40	1	1/2" DIA. STEEL PIPE	LN	1	0	08/19/2011	ES	ES	
41	1	1/2" DIA. STEEL PIPE	LN	1	0	08/19/2011	ES	ES	
42	1	1/2" DIA. STEEL PIPE	LN	1	0	08/19/2011	ES	ES	
43	1	1/2" DIA. STEEL PIPE	LN	1	0	08/19/2011	ES	ES	
44	1	1/2" DIA. STEEL PIPE	LN	1	0	08/19/2011	ES	ES	
45	1	1/2" DIA. STEEL PIPE	LN	1	0	08/19/2011	ES	ES	
46	1	1/2" DIA. STEEL PIPE	LN	1	0	08/19/2011	ES	ES	
47	1	1/2" DIA. STEEL PIPE	LN	1	0	08/19/2011	ES	ES	
48	1	1/2" DIA. STEEL PIPE	LN	1	0	08/19/2011	ES	ES	
49	1	1/2" DIA. STEEL PIPE	LN	1	0	08/19/2011	ES	ES	
50	1	1/2" DIA. STEEL PIPE	LN	1	0	08/19/2011	ES	ES	



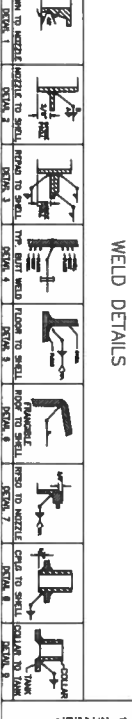
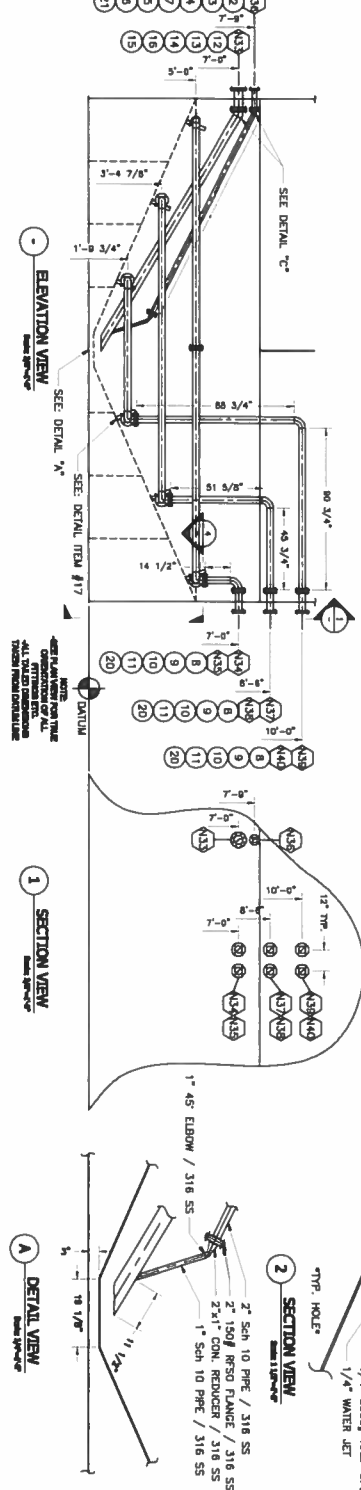
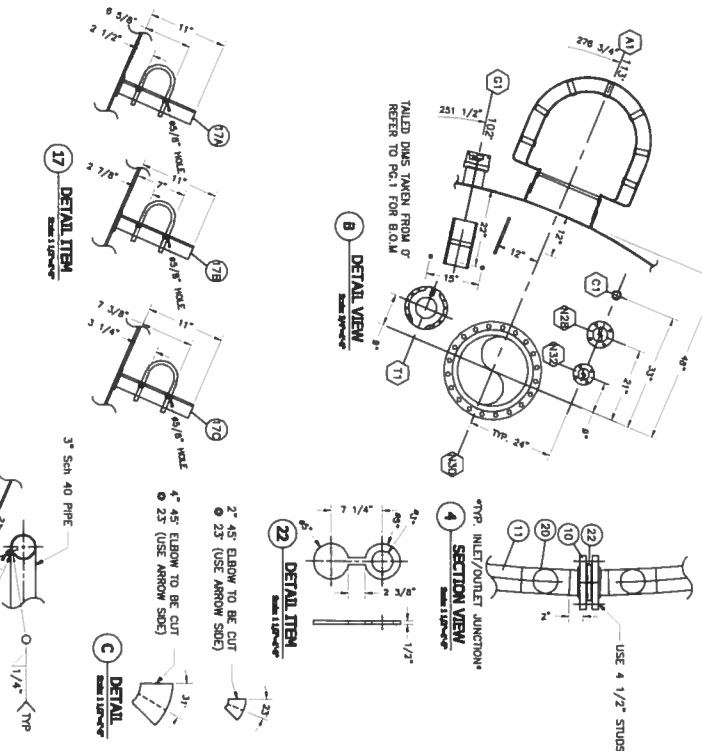
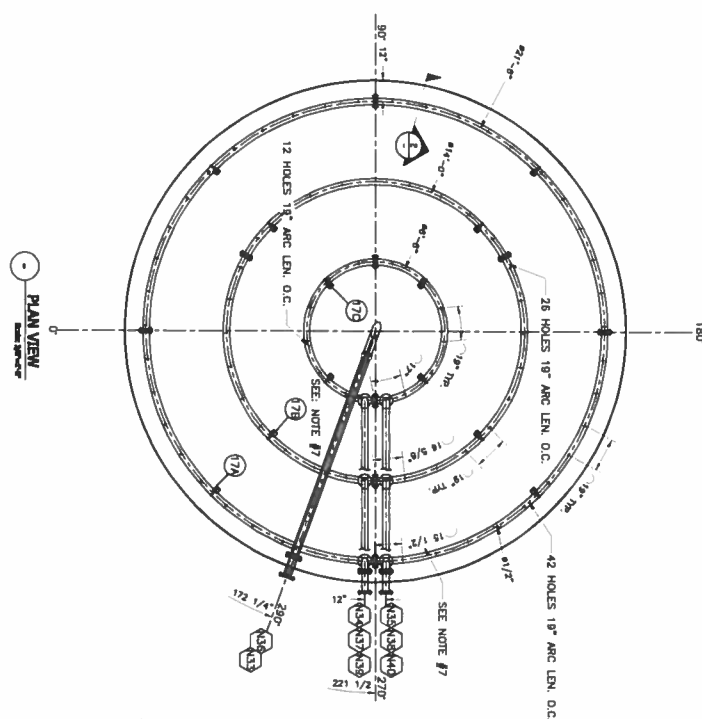
PROJECT: 2280 BM SINGLE WALL CONTAINMENT TANK
 23'-6" O.D. TANK
 32' HIGH

ATTACHMENT ORIENTATION SCHEDULE

NO.	SIZE	DESCRIPTION	LOC.	ELEV.
1	4"	1/2" RING FLANGE - 1/2" FLANGE AND CN DISCONNECT	200	7'-4"
2	4"	1/2" RING FLANGE - 1/2" FLANGE AND CN DISCONNECT	200	7'-4"
3	4"	1/2" RING FLANGE - 1/2" FLANGE AND CN DISCONNECT	200	7'-4"
4	4"	1/2" RING FLANGE - 1/2" FLANGE AND CN DISCONNECT	200	7'-4"
5	4"	1/2" RING FLANGE - 1/2" FLANGE AND CN DISCONNECT	200	7'-4"
6	4"	1/2" RING FLANGE - 1/2" FLANGE AND CN DISCONNECT	200	7'-4"
7	4"	1/2" RING FLANGE - 1/2" FLANGE AND CN DISCONNECT	200	7'-4"
8	4"	1/2" RING FLANGE - 1/2" FLANGE AND CN DISCONNECT	200	7'-4"
9	4"	1/2" RING FLANGE - 1/2" FLANGE AND CN DISCONNECT	200	7'-4"
10	4"	1/2" RING FLANGE - 1/2" FLANGE AND CN DISCONNECT	200	7'-4"
11	4"	1/2" RING FLANGE - 1/2" FLANGE AND CN DISCONNECT	200	7'-4"
12	4"	1/2" RING FLANGE - 1/2" FLANGE AND CN DISCONNECT	200	7'-4"
13	4"	1/2" RING FLANGE - 1/2" FLANGE AND CN DISCONNECT	200	7'-4"
14	4"	1/2" RING FLANGE - 1/2" FLANGE AND CN DISCONNECT	200	7'-4"
15	4"	1/2" RING FLANGE - 1/2" FLANGE AND CN DISCONNECT	200	7'-4"
16	4"	1/2" RING FLANGE - 1/2" FLANGE AND CN DISCONNECT	200	7'-4"
17	4"	1/2" RING FLANGE - 1/2" FLANGE AND CN DISCONNECT	200	7'-4"
18	4"	1/2" RING FLANGE - 1/2" FLANGE AND CN DISCONNECT	200	7'-4"
19	4"	1/2" RING FLANGE - 1/2" FLANGE AND CN DISCONNECT	200	7'-4"
20	4"	1/2" RING FLANGE - 1/2" FLANGE AND CN DISCONNECT	200	7'-4"
21	4"	1/2" RING FLANGE - 1/2" FLANGE AND CN DISCONNECT	200	7'-4"
22	4"	1/2" RING FLANGE - 1/2" FLANGE AND CN DISCONNECT	200	7'-4"

BILL OF MATERIALS

NO.	QTY	DESCRIPTION	MATERIAL
1	1	1" PIPE SCH 40	SA-100
2	2	1" RING RIB FLANGE	SA-100
3	2	1" RING RIB FLANGE	SA-100
4	13	1" RING RIB FLANGE	SA-100
5	1	1" RING RIB FLANGE	SA-100
6	1	1" RING RIB FLANGE	SA-100
7	1	1" RING RIB FLANGE	SA-100
8	1	1" RING RIB FLANGE	SA-100
9	1	1" RING RIB FLANGE	SA-100
10	1	1" RING RIB FLANGE	SA-100
11	1	1" RING RIB FLANGE	SA-100
12	1	1" RING RIB FLANGE	SA-100
13	1	1" RING RIB FLANGE	SA-100
14	1	1" RING RIB FLANGE	SA-100
15	1	1" RING RIB FLANGE	SA-100
16	1	1" RING RIB FLANGE	SA-100
17	1	1" RING RIB FLANGE	SA-100
18	1	1" RING RIB FLANGE	SA-100
19	1	1" RING RIB FLANGE	SA-100
20	1	1" RING RIB FLANGE	SA-100
21	1	1" RING RIB FLANGE	SA-100
22	1	1" RING RIB FLANGE	SA-100



- NOTES:
- BUILD IN ACCORDANCE WITH API-650 APPROVED CODE AND CLIENT SPECIFICATIONS.
 - CONSTRUCTION SHALL BE IN ACCORDANCE WITH THE WELDING CODE.
 - DO NOT SCALE DRAWING.
 - ALL DIMENSIONS ARE IN INCHES UNLESS OTHERWISE NOTED.
 - DESIGN AND TEST PRESSURE IS 24 PSI.
 - ALL DIMENSIONS ARE TO FACE UNLESS OTHERWISE NOTED.
 - ARC LENGTH FROM FACE OF FLANGE.

REV.	DATE	DESCRIPTION	ISSUED FOR CONSTRUCTION	ISSUED FOR CONSTRUCTION	ISSUED FOR CONSTRUCTION
0	09/28/2011	ISSUED FOR CONSTRUCTION	ES	-	-
1	11/24/2011	GAUGE COLUMN LOCATION	ES	-	-

NO.	QTY	DESCRIPTION	MATERIAL
1	1	1" PIPE SCH 40	SA-100
2	2	1" RING RIB FLANGE	SA-100
3	2	1" RING RIB FLANGE	SA-100
4	13	1" RING RIB FLANGE	SA-100
5	1	1" RING RIB FLANGE	SA-100
6	1	1" RING RIB FLANGE	SA-100
7	1	1" RING RIB FLANGE	SA-100
8	1	1" RING RIB FLANGE	SA-100
9	1	1" RING RIB FLANGE	SA-100
10	1	1" RING RIB FLANGE	SA-100
11	1	1" RING RIB FLANGE	SA-100
12	1	1" RING RIB FLANGE	SA-100
13	1	1" RING RIB FLANGE	SA-100
14	1	1" RING RIB FLANGE	SA-100
15	1	1" RING RIB FLANGE	SA-100
16	1	1" RING RIB FLANGE	SA-100
17	1	1" RING RIB FLANGE	SA-100
18	1	1" RING RIB FLANGE	SA-100
19	1	1" RING RIB FLANGE	SA-100
20	1	1" RING RIB FLANGE	SA-100
21	1	1" RING RIB FLANGE	SA-100
22	1	1" RING RIB FLANGE	SA-100

APPRVD. FINAL

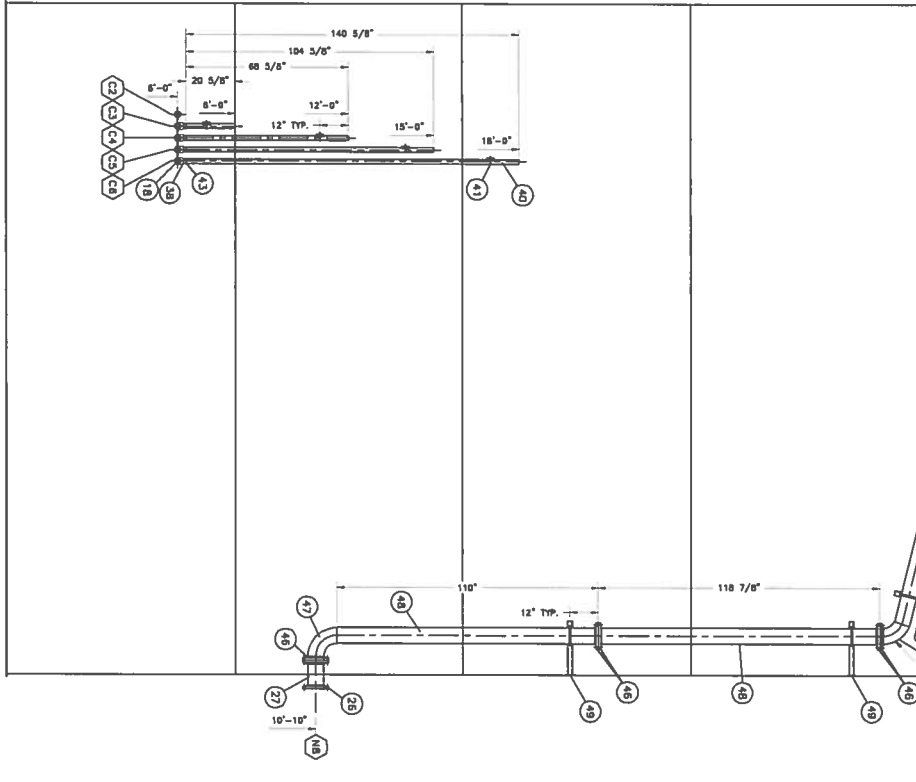


PROJECT: 2250 BR SINGLE WALL CONTAINMENT TANK
 TITLE: DESAND RING DETAIL & MISC DETAIL / T-6300
 25'-0" O.D. TANK
 32' HIGH

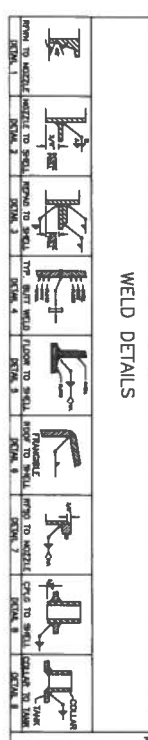
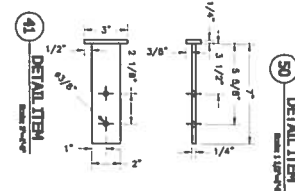
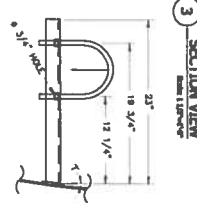
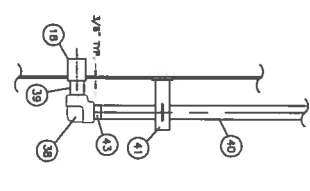
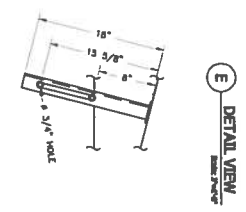
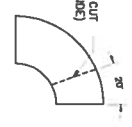
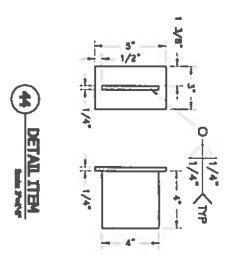
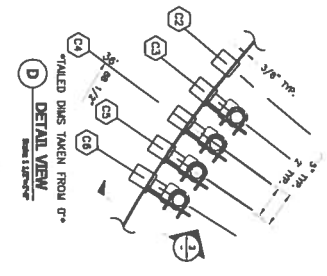
NO.	QTY	DESCRIPTION	MATERIAL
1	1	1" PIPE SCH 40	SA-100
2	2	1" RING RIB FLANGE	SA-100
3	2	1" RING RIB FLANGE	SA-100
4	13	1" RING RIB FLANGE	SA-100
5	1	1" RING RIB FLANGE	SA-100
6	1	1" RING RIB FLANGE	SA-100
7	1	1" RING RIB FLANGE	SA-100
8	1	1" RING RIB FLANGE	SA-100
9	1	1" RING RIB FLANGE	SA-100
10	1	1" RING RIB FLANGE	SA-100
11	1	1" RING RIB FLANGE	SA-100
12	1	1" RING RIB FLANGE	SA-100
13	1	1" RING RIB FLANGE	SA-100
14	1	1" RING RIB FLANGE	SA-100
15	1	1" RING RIB FLANGE	SA-100
16	1	1" RING RIB FLANGE	SA-100
17	1	1" RING RIB FLANGE	SA-100
18	1	1" RING RIB FLANGE	SA-100
19	1	1" RING RIB FLANGE	SA-100
20	1	1" RING RIB FLANGE	SA-100
21	1	1" RING RIB FLANGE	SA-100
22	1	1" RING RIB FLANGE	SA-100

ATTACHMENT ORIENTATION SCHEDULE		LOC.	ELEV.
NO.	SIZE	DESCRIPTION	
01	6"	6" RIBBON TUBING - 90° ELBOW SECTION C/W INTERNAL BESS	12'-11"
02	1 1/2"	6" RIBBON TUBING - 90° ELBOW SECTION C/W INTERNAL BESS TO 6'-0"	8'-0"
03	1 1/2"	6" RIBBON TUBING - 90° ELBOW SECTION C/W INTERNAL BESS TO 6'-0"	8'-0"
04	1 1/2"	6" RIBBON TUBING - 90° ELBOW SECTION C/W INTERNAL BESS TO 6'-0"	8'-0"
05	1 1/2"	6" RIBBON TUBING - 90° ELBOW SECTION C/W INTERNAL BESS TO 6'-0"	8'-0"

REFER TO PG. 1 FOR BILL OF MATERIALS



APPRVD. FINAL



- NOTES:
1. BUILD IN ACCORDANCE WITH API-650 APPOINT CODE AND CLIPIT
 2. CONSTRUCTION WELD CONSTRUCTION.
 3. DO NOT SCALE DRAWING.
 4. DESIGN AND TEST PRESSURE AS LESS.
 5. DESIGN AND TEST PRESSURE AS 2.0X.
 6. LIST PRESSURE IN AIR AND SOU.

REV.	NO.	DATE	DESCRIPTION	BY	CHKD	APP'D
1	0	09/28/2011	ISSUED FOR CONSTRUCTION	ES	-	-

CLIENT: **ERTIQUIMIA INDUSTRIES**

TANK MANUFACTURER: **JENSEN'S TANK MANUFACTURING**

PROJECT: 2250 BM SINGLE WALL CONTAINMENT TANK

TITLE: DETAIL / T-8300
23'-6" O.D. TANK
32" HIGH

DATE: 09/19/2011

SCALE: AS SHOWN

DATE TO: 3 OF 3 LIMITS-250-100-TI