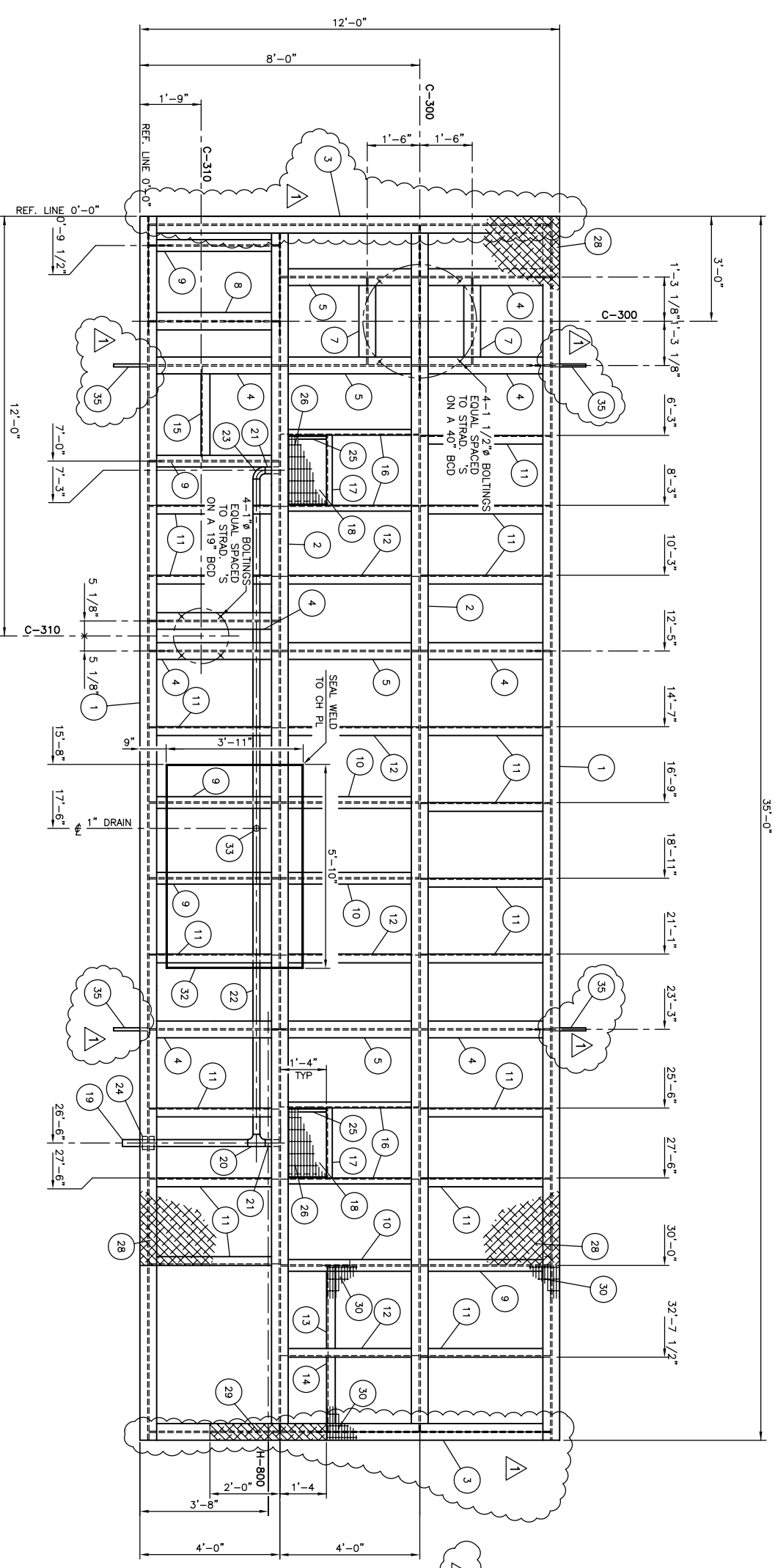
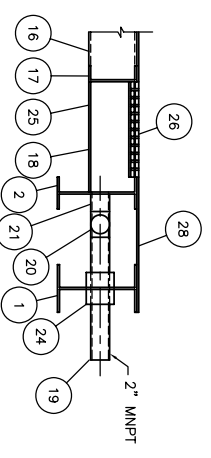


BILL OF MATERIALS

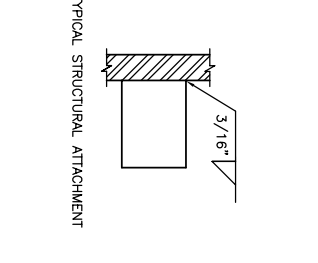
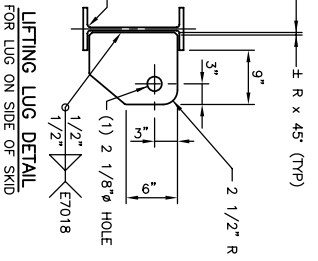
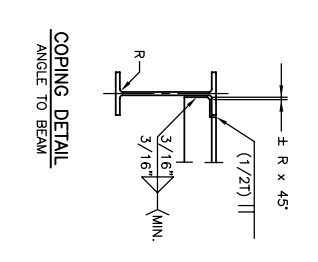
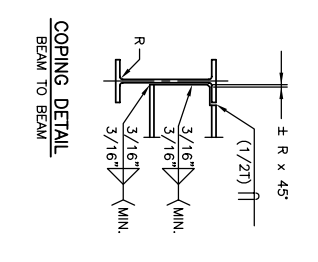
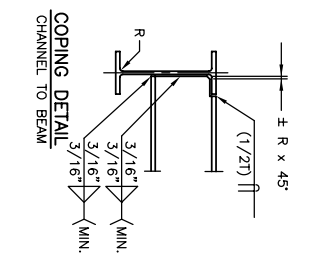
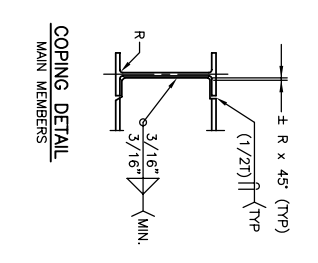
MARK	PART	DESCRIPTION	QTY	MATERIAL
1	MAIN BEAM	W10" x 22# x 35'-0" LG	2	G40.21-50W
2	MAIN BEAM	W10" x 22# x 24'-6" LG	2	G40.21-50W
3	MAIN BEAM	W10" x 22# x 11'-6" LG	2	G40.21-50W
4	CROSS BEAM	W10" x 22# x 3'-8" LG	8	G40.21-50W
5	SUPPORT	W10" x 22# x 3'-11 3/4" LG	4	G40.21-50W
7	SUPPORT	W6" x 15.5# x 2'-6 1/8" LG	2	G40.21-50W
8	SUPPORT	W6" x 15.5# x 3'-8 7/8" LG	1	G40.21-50W
9	SUPPORT	W4" x 13# x 3'-8 3/4" LG	5	G40.21-50W
10	SUPPORT	W4" x 13# x 3'-11 3/4" LG	3	G40.21-50W
11	FLOOR SUPPORT	3" x 3" x 3/8" ANGLE x 3'-8 7/8" LG	4	G40.21-44W
12	FLOOR SUPPORT	3" x 3" x 3/8" ANGLE x 3'-11 3/4" LG	4	G40.21-44W
13	FLOOR SUPPORT	3" x 3" x 3/8" ANGLE x 2'-7" LG	1	G40.21-44W
14	FLOOR SUPPORT	3" x 3" x 3/8" ANGLE x 2'-1 1/2" LG	1	G40.21-44W
15	FLOOR SUPPORT	3" x 3" x 3/8" ANGLE x 2'-8 1/4" LG	1	G40.21-44W
16	SUMP	C6" x 8.2# x 2'-0" LG	4	G40.21-44W
17	SUMP	1/4" PLATE 2'-0" x 15 3/4" LG	2	SAG40.2144W
18	DRAIN	2" SCH 40 SMLS PIPE x 3'-7" LG (TOE)	1	SA-106B
19	DRAIN	2" SCH 40 SMLS PIPE x 3'-7" LG (TOE)	1	SA-234WPB
20	DRAIN	2" SCH 40 STRAIGHT BW TEE	2	SA-106B
21	DRAIN	2" SCH 40 SMLS PIPE x 6" LG	2	SA-106B
22	DRAIN	2" SCH 40 SMLS PIPE x 18'-11" LG	1	SA-234WPB
23	DRAIN	2" SCH 40 90° LR BW ELL	1	SA-53B
24	REINF. SLEDFE	4" SCH 40 PIPE x 4" LG	1	SA-53B
25	SUPPORT	1 1/4" x 1 1/4" x 1/4" ANGLE x 1'-1" LG	4	G40.21-44W
26	FLOOR GRADE	1" x 3/16" DB 19-4 GRATING 1'-11 1/2" x 1'-1" LG	2	CS
28	FLOORING	4'-0" x 1/4" CHECKER PLATE x 30'-0" LG	3	SAG40.2144W
29	FLOORING	0'-5 3/8" x 1/4" CHECKER PLATE x 3'-4" LG	1	SAG40.2144W
30	FLOORING	1" x 3/16" DB 19-4 GRATING 5'-0" x 6'-6" LG	1	SAG40.2144W
32	DRAIN PAN	1" x 1/4" FLAT BAR (CUT AS REQ'D)	20 ±	SAG40.2144W
33	DRAIN	1" 3000# NPT DRAIN (SHOP RUN AS REQ'D TO 2" FLR DRAIN)		
35	LIFT LUG	9" x 1" PL x 11 5/8" LG	4	SAG40.2144W



PLAN VIEW



DRAIN DETAIL (NTS)



- NOTES:
- 1) TOP OF CHECKER PLATE REFERENCE ELEVATION 0'-0".
 - 2) CHECKER PLATE SEAMS TO BE SEAL WELDED.
 - 3) CHECKER PLATE PERIMETER TO BE SEAL WELDED.
 - 4) CHECKER PLATE TO BE STITCH WELDED TO ALL SUPPORTS.
 - 5) STRUCTURAL SKID TO BE COMMERCIAL SANDBLASTED PER SSPC-SP2.
 - 6) ABOVE DEWPOINT, OR WHEN THE RELATIVE HUMIDITY OF THE AIR IS GREATER THAN 80%.
 - 7) METAL PRIMER & (1) COAT CLOVERDALE 111 SERIES WARM GREY MARINE ENAMEL.
 - 8) SKID FLOOR TO RECEIVE (1) COAT CLOVERDALE 111 SERIES WARM GREY MARINE ENAMEL.
 - 9) SKID MUST BE ADEQUATELY SUPPORTED BY THE CUSTOMER IN THE FIELD.
 - 10) TOTAL APPROXIMATE SKID WEIGHT: 10440 lbs (4736 kg).

NO.	REVISION	BY	CHKD.	DATE
A	ISSUED FOR APPROVAL	TP		04/09/17
0	ISSUED FOR CONSTRUCTION	TP		04/09/17
1	REvised ITEM #3, WAS 12'-0" LG	AB		04/10/12

CUSTOMER REFERENCE	T.B.A.
CUSTOMER	TRIDENT EXPLORATION
Product	DEHYDRATION PACKAGE / CBM COMPRESSOR STATION
Product	LSD T.B.A.
Job No.	B7113-10

DATE	04/09/17
SCALE	1/2" = 1'-0"
DATE	04/09/17
FORMING NUMBER	B7113-140 SHF. 1 OF 1
TIME	GLYCOL DEHYDRATION FACILITY
TIME	SKID: 12'-0" WIDE x 35'-0" LG x W10" x 22#

