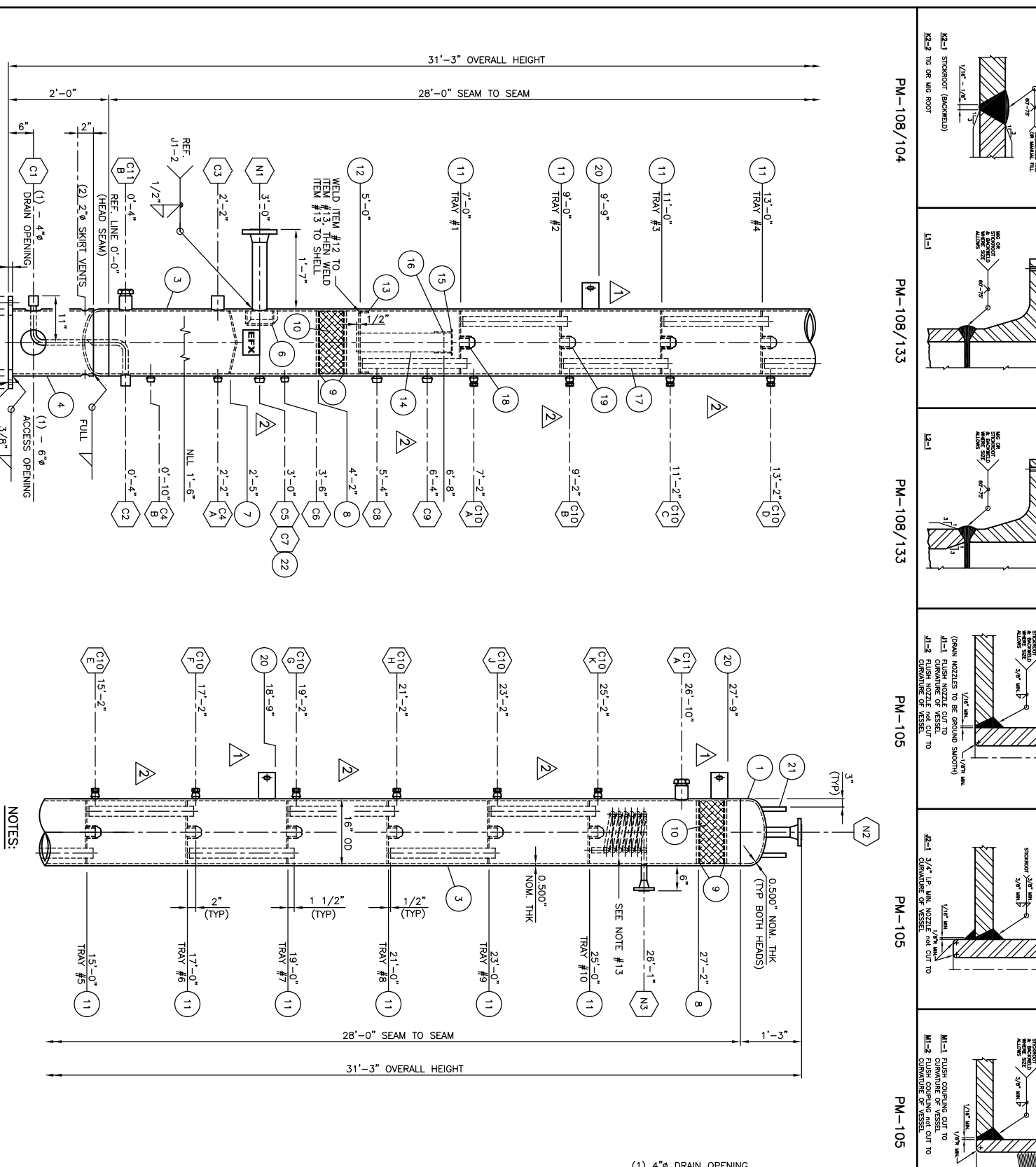
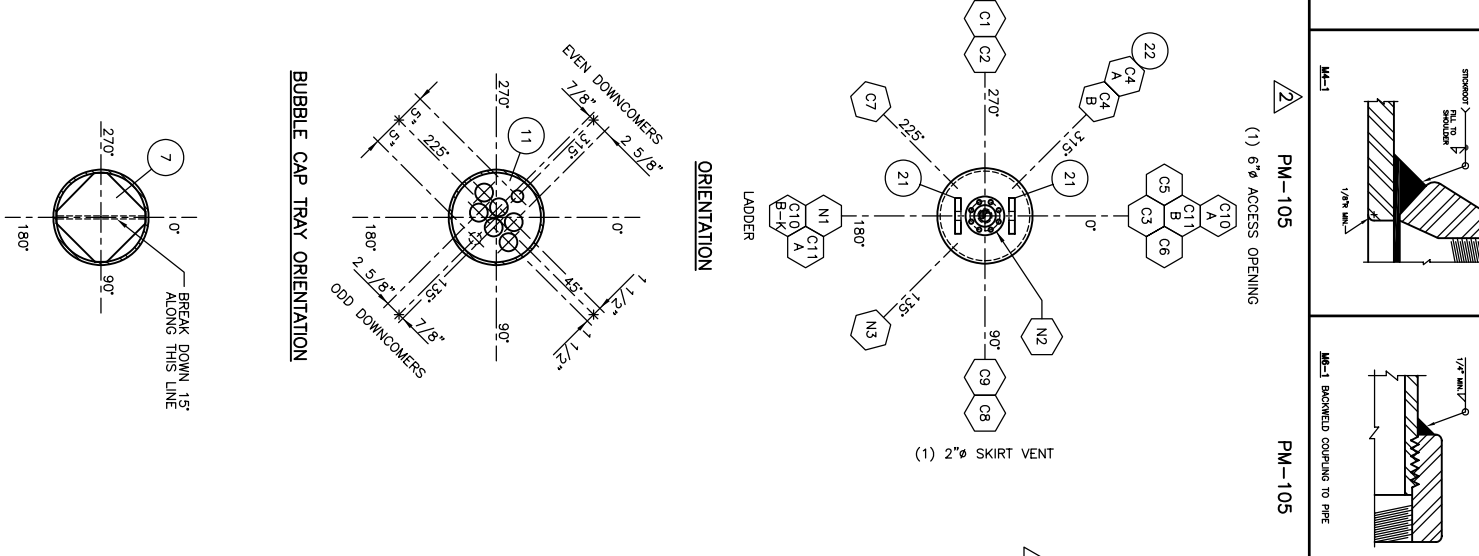
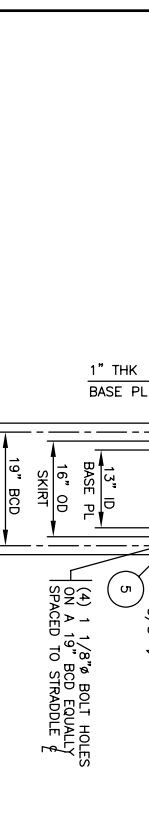


BILL OF MATERIALS

MARK	PART	DESCRIPTION	QTY	MATERIAL	WELD SHW
1	HEADS	16" OD x 1/2" NOM. THK x 2.1 SE HEAD	2	SA-516/70N	K2-2
3	SHELL	C/W 2" SF (NOT FORNED)	1	SA-333GR6	
4	SKIRT	16" SCH XH SMLS PIPE x 28'-0" LG	1	SA-106B	
5	BASE PLATE	22" OD x 1" PL x 13" ID	1	SA-106B	
6	INLET DEFLECTOR	6" x 6" x 3/8" PL FAB BOX, TILT DOWN 15°	1	SA-106B	
7	FLOAT HOOD	13" SQ x 3/8" PL (BREAK DNG 15° DOWN)	1	SA-106B	
8	M.P. SUPPORT	1" SQ BAR x 3'-9" LG (ROLL TO 14 7/8" OD)	4	SA-106B	
9	MIST PAD	14 3/4" OD x 4# XPM	4	SA-106B	
10	TRAYS #1-#10	14 7/8" OD x 3/8" PL @ 12#/ft <sup>2</sup> DENSITY	10	SA-106B	
11	CHIMNEY	2" x 3/8" PL x 4'-9" LG (ROLL TO 14 7/8" OD)	1	SA-106B	
12	CHIMNEY TRAY	4" SCH STD SMLS PIPE x 1'-10 7/8" LG	1	SA-106B	
13	CHIMNEY CAP	6" OD x 1/4" PL	1	SA-106B	
14	CHIMNEY	2" SCH STD SMLS PIPE x 2'-1" LG	10	SA-106B	
15	CHIMNEY SUPP	2" x 2 5/8" LG TUBING	50	SA-179	
16	DOWNCOMER	3" OD x 3" LG STD BUBBLE CAP	50	CS	
17	RISERS	REFER TO DRAWING B7113-241 SHT. 2 OF 2			
18	BUBBLE CAPS	6" x 1" PL x 6" LG C/W (1) 1 1/2" HOLE	2	SA-106B	
19	LAODER CLIPS	STANDARD NAME PLATE C/W "T" BRACKET	1	SA-106B	
20	LIFT LUSS				
21	NAME PLATE				
22					
N1	INLET	3" 300# SCH XH RFRM FLG	1	SA-106B	M2-1
N2	GAS OUTLET	3" SCH XXH SMLS PIPE x 1'-4 5/8" LG	1	SA-333GR6	SEE N1
N3	GLYCOL INLET	2" 300# SCH XH RFRM FLG	1	SA-106B	L2-1
C1	DRAIN	1" 6000# NPT FULL CRPG	1	SA-106B	M6-1
C2	LIQUID OUTLET	1" 6000# NPT FULL CRPG	1	SA-106B	M1-2
C3	LC-310	2" 6000# NPT FULL CRPG	1	SA-106B	M6-1
C4	LG-310	3/4" 6000# TOL	2	SA-106B	M1-2
C5	PI-310	3/4" 6000# TOL	1	SA-106B	M4-1
C6	PSV-310	1" 6000# TOL	1	SA-106B	M4-1
C7	EQVALIZER	1" 6000# TOL	1	SA-106B	M4-1
C8	GLYCOL OUTLET	1" 6000# TOL	1	SA-106B	M4-1
C9	EQVALIZER	1" 6000# TOL	1	SA-106B	M4-1
C10	TRAY DRAINS	3/4" NPT HEX PLUG	10	SA-106B	M4-1
C11	INSPECTION	2" 6000# NPT FULL CRPG	2	SA-106B	M1-2

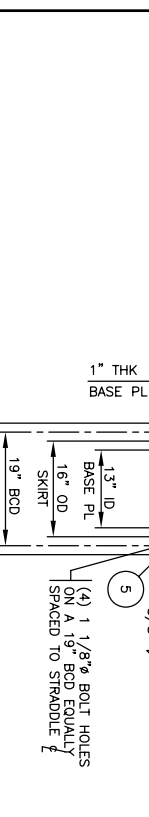


- NOTES:
- COIL TO CONSIST OF (6) TURNS OF 1" SCH XH SMLS PIPE W/1 1/2" CC DRAIN OVER A 8 5/8" MANDREL & SUPPORTED AS REQUIRED.
  - VESSEL TO HAVE CAGED LADDER ABOVE BUILDING ROOF SEE DRAWING B7113-241 SHT. 2 OF 2 FOR DETAILS.
  - SEAL WELD ALL INTERNAL ATTACHMENTS WHERE ACCESSIBLE.
  - VESSEL EXTERIOR TO BE SANDBLASTED PER SSPC-SP6.
  - SANDBLASTING SHALL NOT BE CONDUCTED ON SURFACES THAT ARE LESS THAN 3°F ABOVE DEWPOINT OR WHEN THE RELATIVE HUMIDITY OF THE AIR IS GREATER THAN 80%.



GENERAL NOTES

- WELDING PROCEDURES: WP-719.2
- QUALITY CONTROL PROGRAM: ADP-1077
- REFERENCE DRAWING NUMBER: STD. 2000 (WELD STANDARDS)
- ALL BOLT HOLES TO STRADDLE CENTRE LINES
- SERIAL NUMBER: B7113-21
- SWEET GAS
- LONG SEAM WPS: NONE
- NOZZLE TO FLG WPS: PM-108/133
- PRE-HEAT TO: 70°F (21°C) MIN.
- SURFACE PREP. INT.: NONE
- SURFACE FINISH EXT.: (1) COAT VALSPAR ZINC CHROMATE PRIMER
- INSULATION: NONE



DESIGN DATA

CODE: ASME SECTION VIII, DIV. 1, 2001 EDITION A-03, ADDENDA

DESIGN PRESS: 655 PSIG (4516 kPa), DESIGN TEMP: 150. °F (66. °C)

MIN. DESIGN METAL TEMP: -20. °F (-29. °C)

M.A.W.P.: MAX. TEMP: PSIG ( kPa)

M.A.W.P.: NEW & COLD: PSIG ( kPa)

HYDROSTATIC TEST PRESSURE: 983. PSIG (6777. kPa)

CORROSION ALLOW.: 0.0625" (1.6 mm), P.W.H.I.: NONE

RADIOPACITY: FULL PER RT-1 (12.7 mm), MIN. 0.4375" (11.1 mm)

HEAD THK NOM.: 0.500" (12.7 mm), MIN. 0.4375" (11.1 mm)

SHELL THK NOM.: 0.500" (12.7 mm), MIN. 0.4375" (11.1 mm)

VOLUME: 35.5 cu. ft. (1000 cu. m)

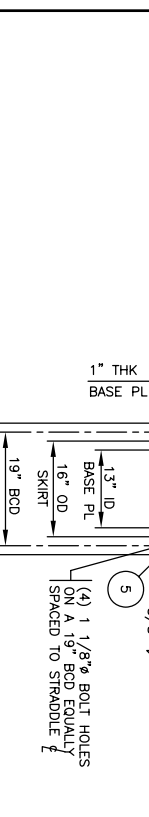
WEIGHT EMPTY: 3800 lb (1727 kg)

WEIGHT FULL OF WATER: 6015 lb (2734 kg)

SPLASH BAFFLE ORIENTATION

REF. DNG: B5308-21

C.R.N.: K99722



TRIDENT EXPLORATION LTD.

CUSTOMER REF. NO. T.B.A.

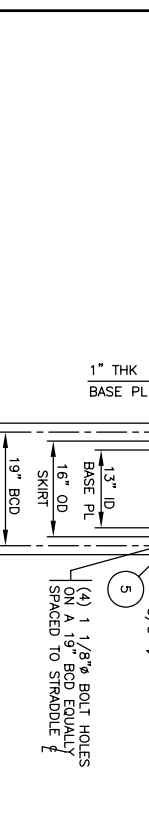
PROJECT: DEHYDRATION PACKAGE / CBM COMPRESSOR STATION

JOB NO. B7113-21

GLYCOL CONTACTOR (C-310)

16" OD x 28'-0"/S x 4516 PSIG @ 150°F

406 mm OD x 8534 mm S/S x 655 kPa @ 66°C



NO.	REVISION	BY	CHECKED	DATE
3	REVISED PIPE MATERIAL ON ITEM #3 & N1, WAS SA-106B	AB		04/12/01
2	CONNECTIONS C4-C10 WERE NPT FULL CRPG	AB		04/10/21
1	REVISED AS NOTED	RA		04/10/12
0	ISSUED FOR CONSTRUCTION	TBB		04/09/28
A	ISSUED FOR APPROVAL	TP		04/09/17