

E-407-A/B
 GAS/GAS EXCHANGER
 273 O.D. x 12186 I/T (2 PASS)
 TS : 8894 KPa @ -28.8°C/55°C
 SS : 8894 KPa @ -28.8°C/55°C
 15mm C.A.

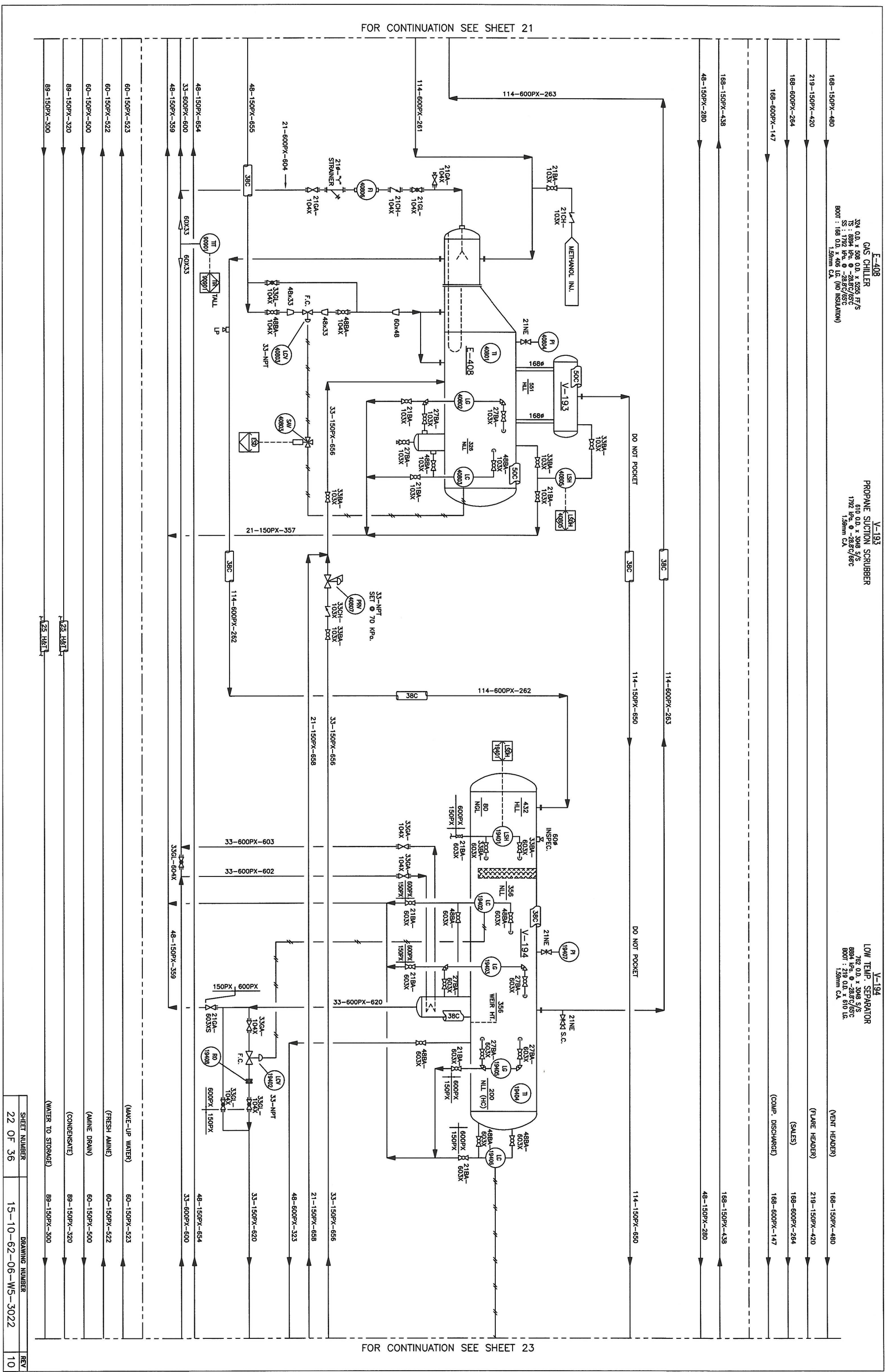
M-909
 REFRIGERANT FILTER/DRIVER
 SPROBRI MODEL C-10212P
 c/w FOUR (4) RCW-48 CORES

SHEET NUMBER	DRAWING NUMBER
21 OF 36	15-10-62-06-W5-3021
REV	10

E-408
 GAS CHILLER
 24 O.D. x 508 O.D. x 5255 FT/S
 TS : 8894 lpc. @ -28.5C/65C
 SS : 1792 lpc. @ -28.5C/65C
 BOOT : 168 O.D. x 406 LG. (NO INSULATION)
 1.59mm CA

V-193
 PROPANE SUCTION SCRUBBER
 610 O.D. x 3948 S/S
 1792 lpc. @ -28.5C/65C
 1.59mm CA

V-194
 LOW TEMP. SEPARATOR
 762 O.D. x 3948 S/S
 8894 lpc. @ -28.5C/65C
 BOOT : 219 O.D. x 610 LG.
 1.59mm CA



FOR CONTINUATION SEE SHEET 21

FOR CONTINUATION SEE SHEET 23

REV	DRAWING NUMBER	SHEET NUMBER
10	15-10-62-06-W5-3022	22 OF 36

- (WATER TO STORAGE) 89-150PX-300
- (CONDENSATE) 89-150PX-320
- (AMINE DRAIN) 60-150PX-500
- (FRESH AMINE) 60-150PX-522
- (MAKE-UP WATER) 80-150PX-523
- (SALES) 168-600PX-264
- (COMP. DISCHARGE) 168-600PX-147
- (FLARE HEADER) 219-150PX-420
- (VENT HEADER) 168-150PX-480

E-409
REFRIGERANT CONDENSER
FAN DRIVER : (2) 5.5 kW, 1P
1800 RPM, 460/3/60

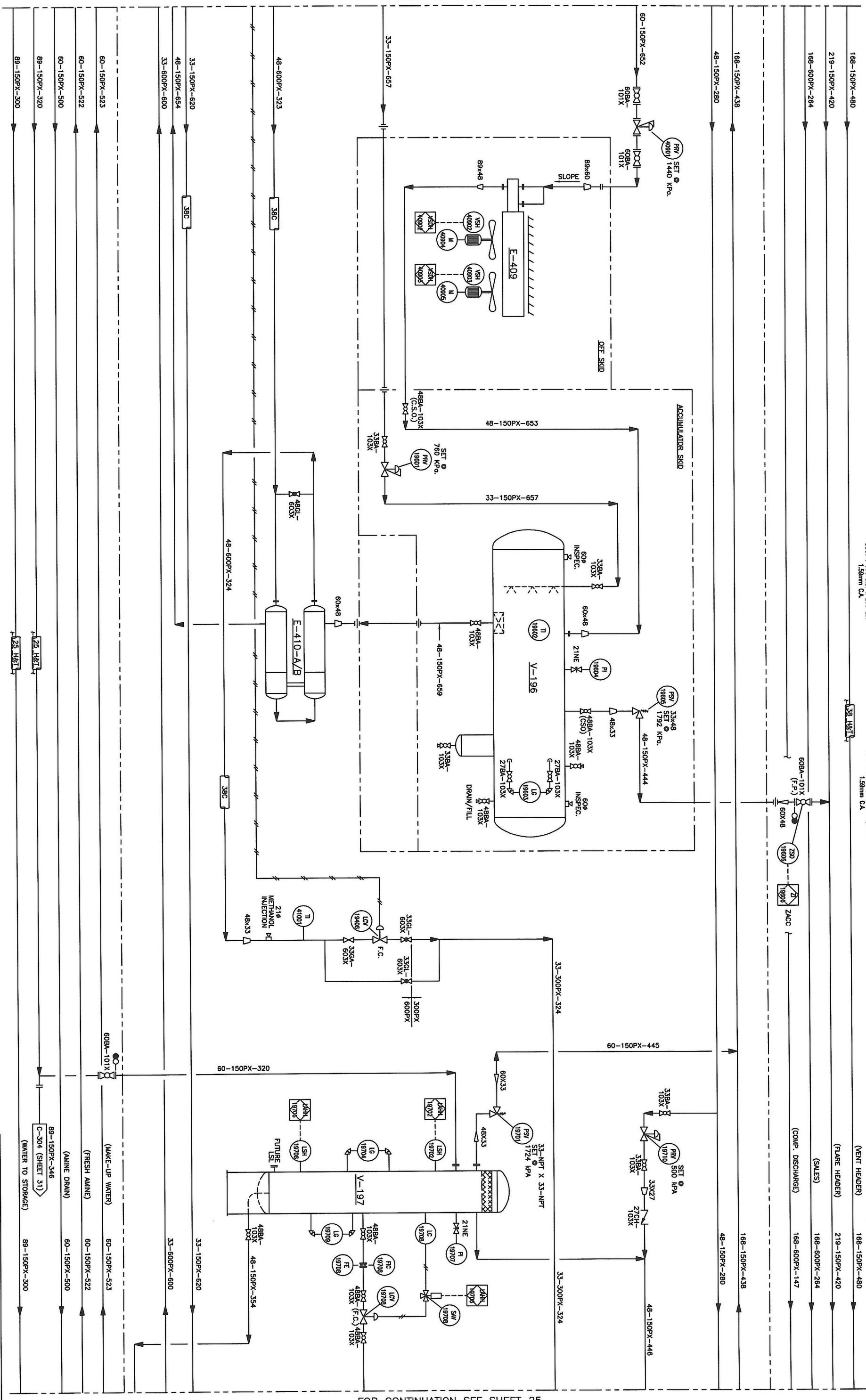
V-196
REFRIGERANT ACCUMULATOR
610 O.D. x 2438 S/S
1792 KPa, -28.8/65°C
800T : 114 O.D. x 285 LG.
1.58mm CA

E-410-A/B
REFRIGERANT SUBCOOLER
48 O.D. x 6096 O/A (2-PASS)
IS : 8894 KPa, -28.8/65°C
SS : 1792 KPa, -28.8/65°C
1.58mm CA

V-197
CONDENSATE FLASH SEPARATOR
408 O.D. x 2743 S/S
1724 KPa, 68°C

FOR CONTINUATION SEE SHEET 23

FOR CONTINUATION SEE SHEET 25

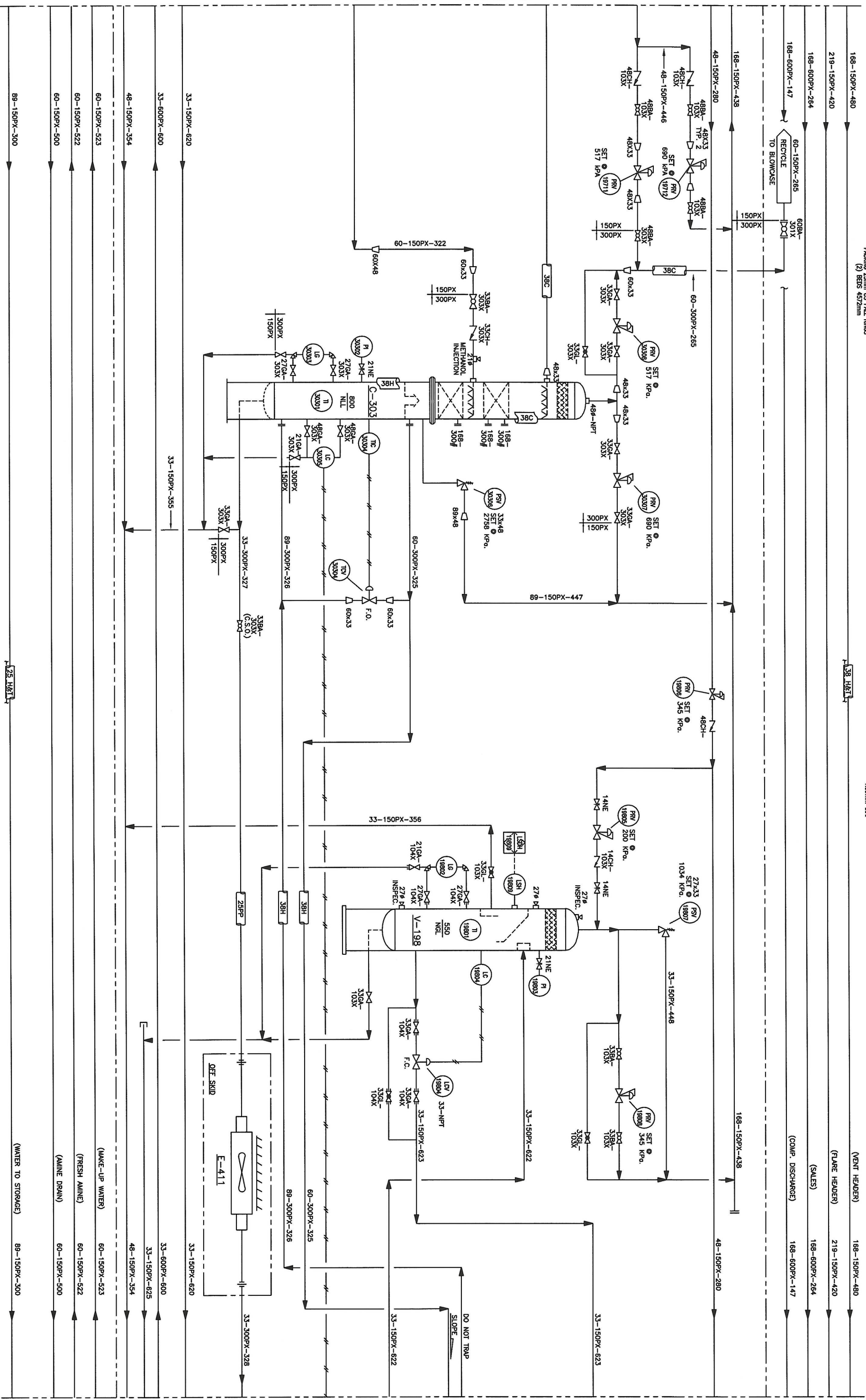


SHEET NUMBER	DRAWING NUMBER	REV
24 OF 36	15-10-62-06-W5-3024	10

C-303
STABILIZER
324 O.D. x 1465 S/S
2758 KPa. @ -28.8/20°C 1.59mm CA
PACKING 25mm CS PALL RINGS
(2) BEDS 4572mm

V-198
GLYCOL FLASH TANK
324 O.D. x 1524 S/S
1034 KPa. @ -28.8/35°C
1.59mm CA

E-411
PRODUCTION COOLER
2758 KPa. @ 20°C 1.59mm CA
COMMON FRAME w/ E-409



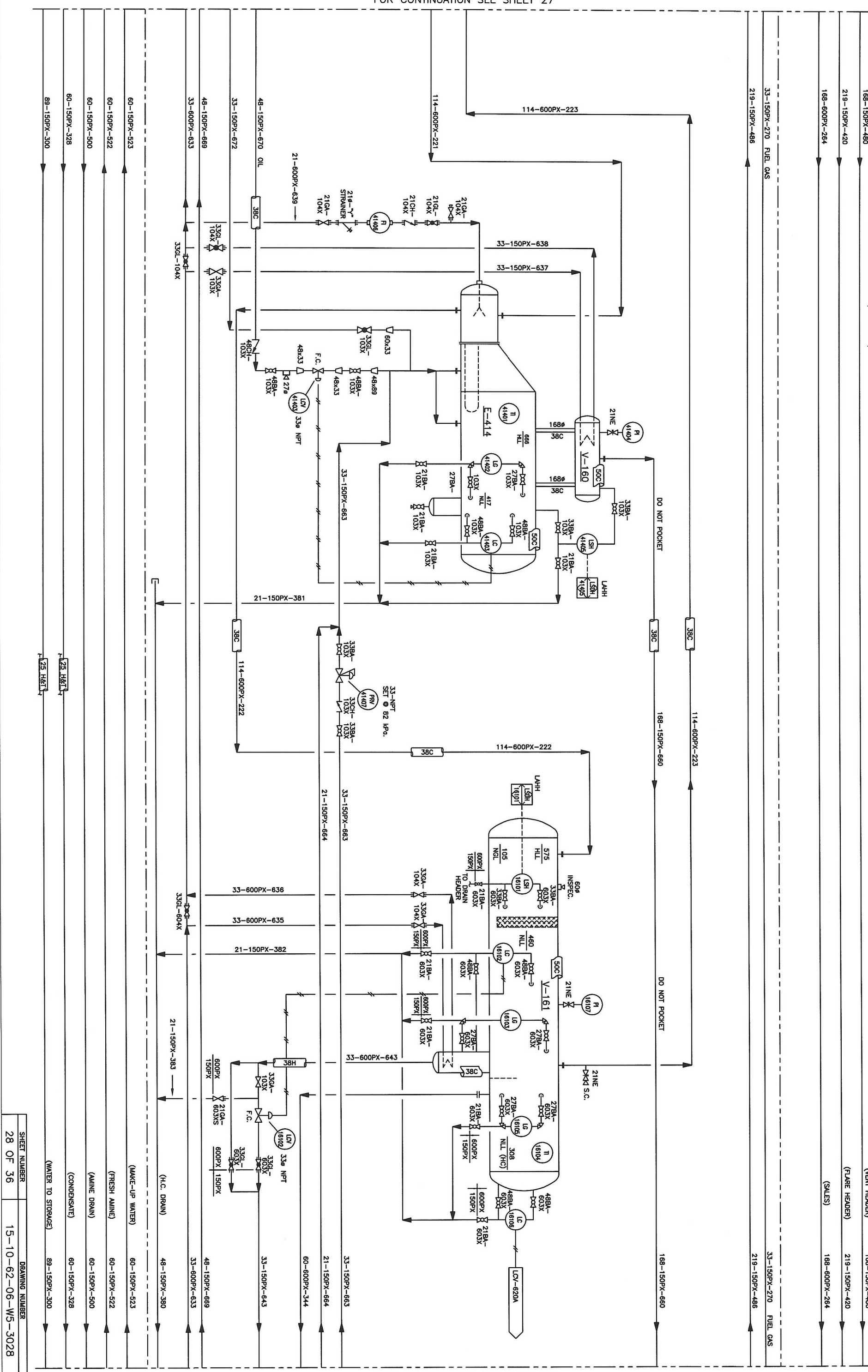
SHEET NUMBER	DRAWING NUMBER	REV
25 OF 36	15-10-62-06-W5-3025	10

FOR CONTINUATION SEE SHEET 27

E-414
 GAS CHILLER
 406 O.D. x 762 O.D. x 6090 S/S
 TS : 8983 RPa @ -28.8°C/65°C, 1.59 C.A.
 SS : 1724 RPa @ -28.8°C/65°C, 1.59 C.A.
 BOOT : 188 O.D. x 305 L.C. (NO INSULATION)

V-160
 PROPANE SUCTION SCRUBBER
 610 O.D. x 3048 S/S
 1724 RPa @ -28.8°C/65°C, 1.59 C.A.

V-161
 LOW TEMP. SEPARATOR
 914 O.D. x 4572 S/S
 8983 RPa @ -28.8°C/65°C, 1.59 C.A.
 BOOT : 324 O.D. x 543 L.C.



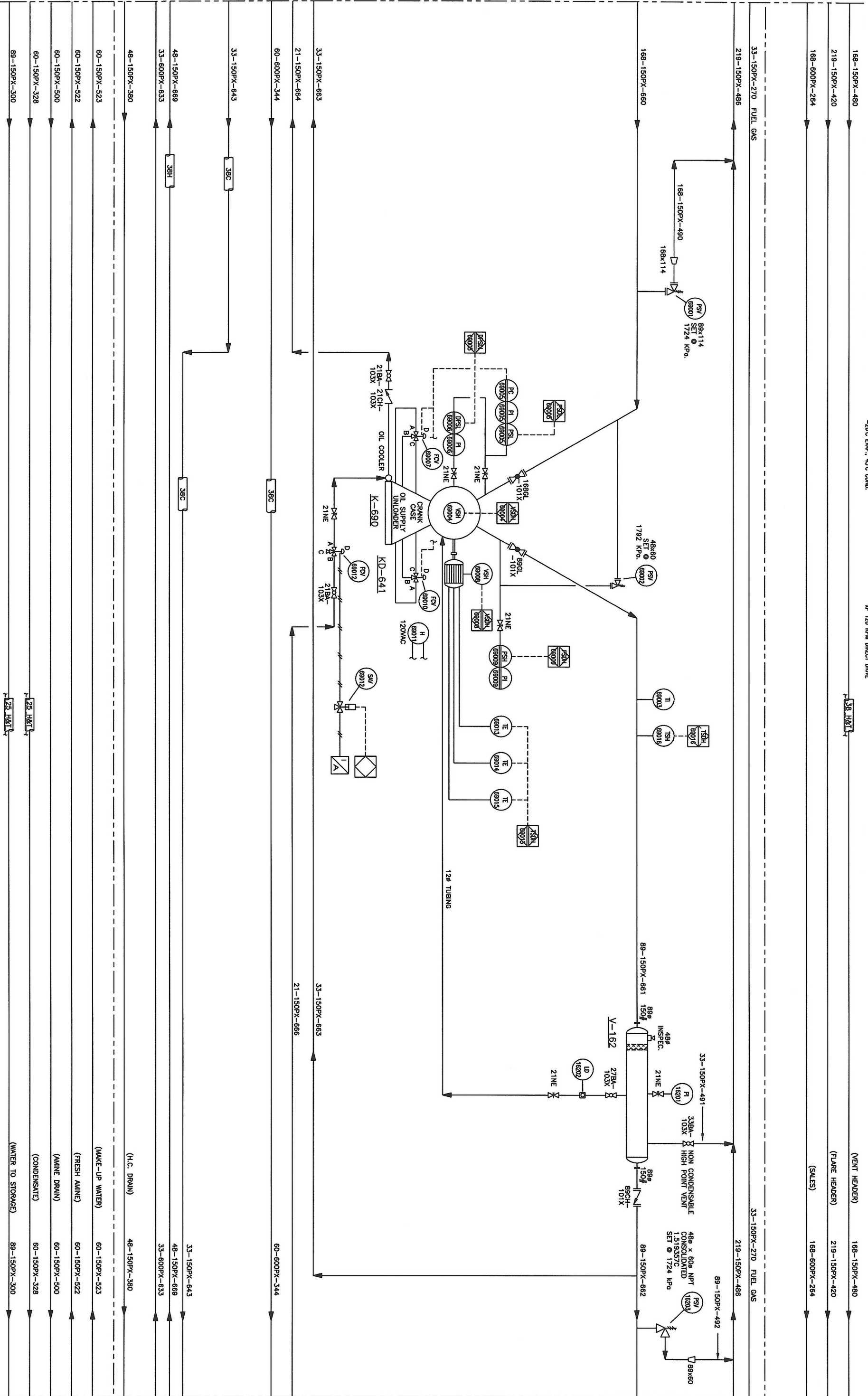
FOR CONTINUATION SEE SHEET 29

SHEET NUMBER	DRAWING NUMBER
28 OF 36	15-10-62-06-W5-3028
REV	10

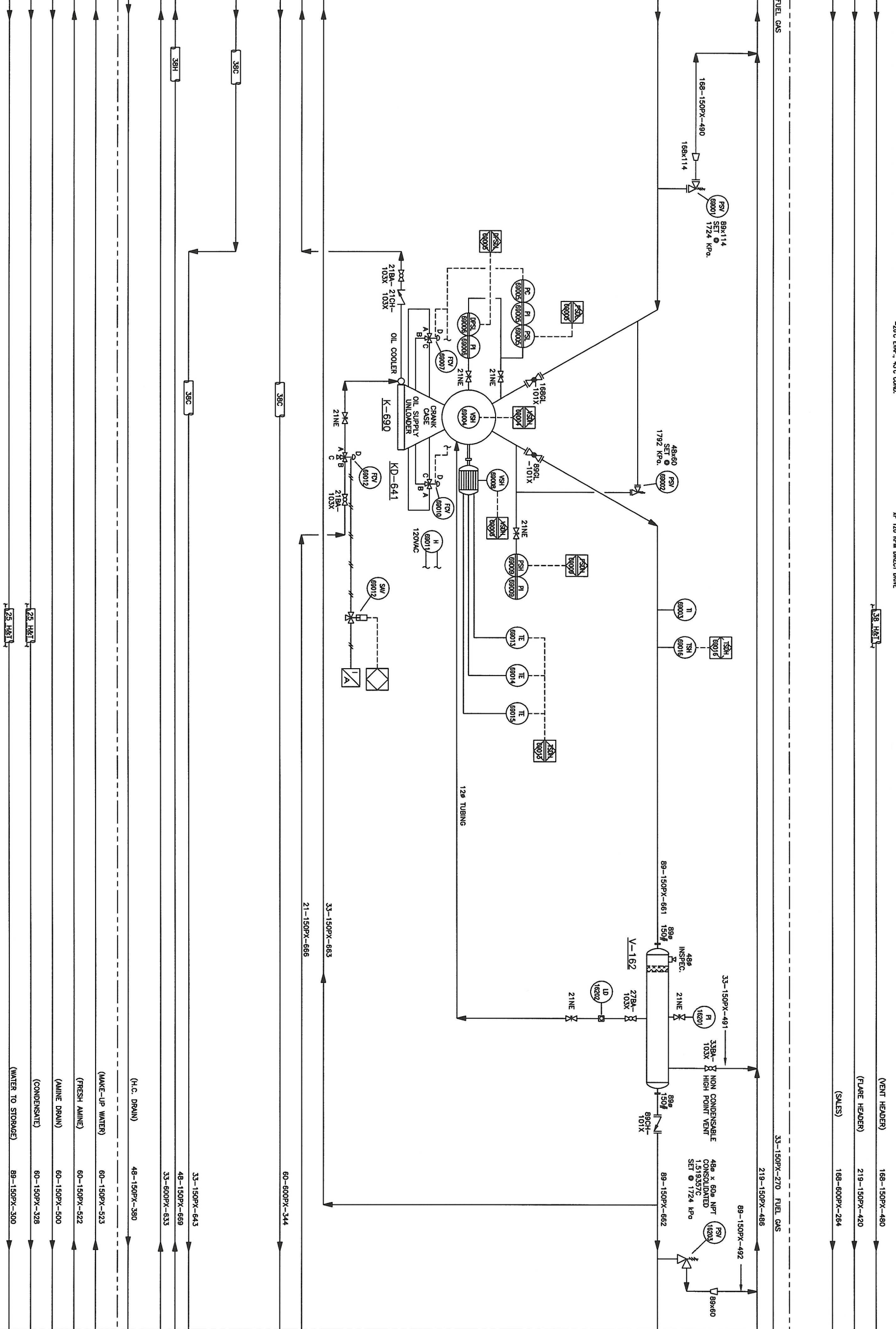
K-690
REFRIGERANT COMPRESSOR
ARCOW MODEL P690
38 USRT @ 109 HP, 1200 RPM
-25°C EWP, 43°C COND.

KD-690
COMPRESSOR DRIVER
ELECTRIC MOTOR
150 HP, 480/23/60
#F 120 RPM DIRECT DRIVE

V-162
DISCHARGE OIL SCRUBBER
356 O.D. x 610 S/S
1724 KPa @ -28.8°C/95°C, 1.59 CA



- 168-150PX-480
- 219-150PX-420
- 168-600PX-264
- 33-150PX-270 FUEL GAS
- 219-150PX-486
- 168-150PX-660
- 33-150PX-663
- 21-150PX-664
- 60-600PX-344
- 33-150PX-643
- 48-150PX-669
- 33-600PX-633
- 48-150PX-380
- 60-150PX-523
- 60-150PX-522
- 60-150PX-500
- 60-150PX-328
- 89-150PX-300



- 168-150PX-480 (VENT HEADER)
- 219-150PX-420 (FLARE HEADER)
- 168-600PX-264 (SALES)
- 33-150PX-270 FUEL GAS
- 219-150PX-486
- 89-150PX-492
- 89-150PX-662
- 33-150PX-491
- 21-150PX-666
- 60-600PX-344
- 33-150PX-663
- 48-150PX-669
- 33-600PX-633
- 48-150PX-380 (H.C. DRAIN)
- 60-150PX-523 (MAKE-UP WATER)
- 60-150PX-522 (FRESH AMINE)
- 60-150PX-500 (AMINE DRAIN)
- 60-150PX-328 (CONDENSATE)
- 89-150PX-300 (WATER TO STORAGE)

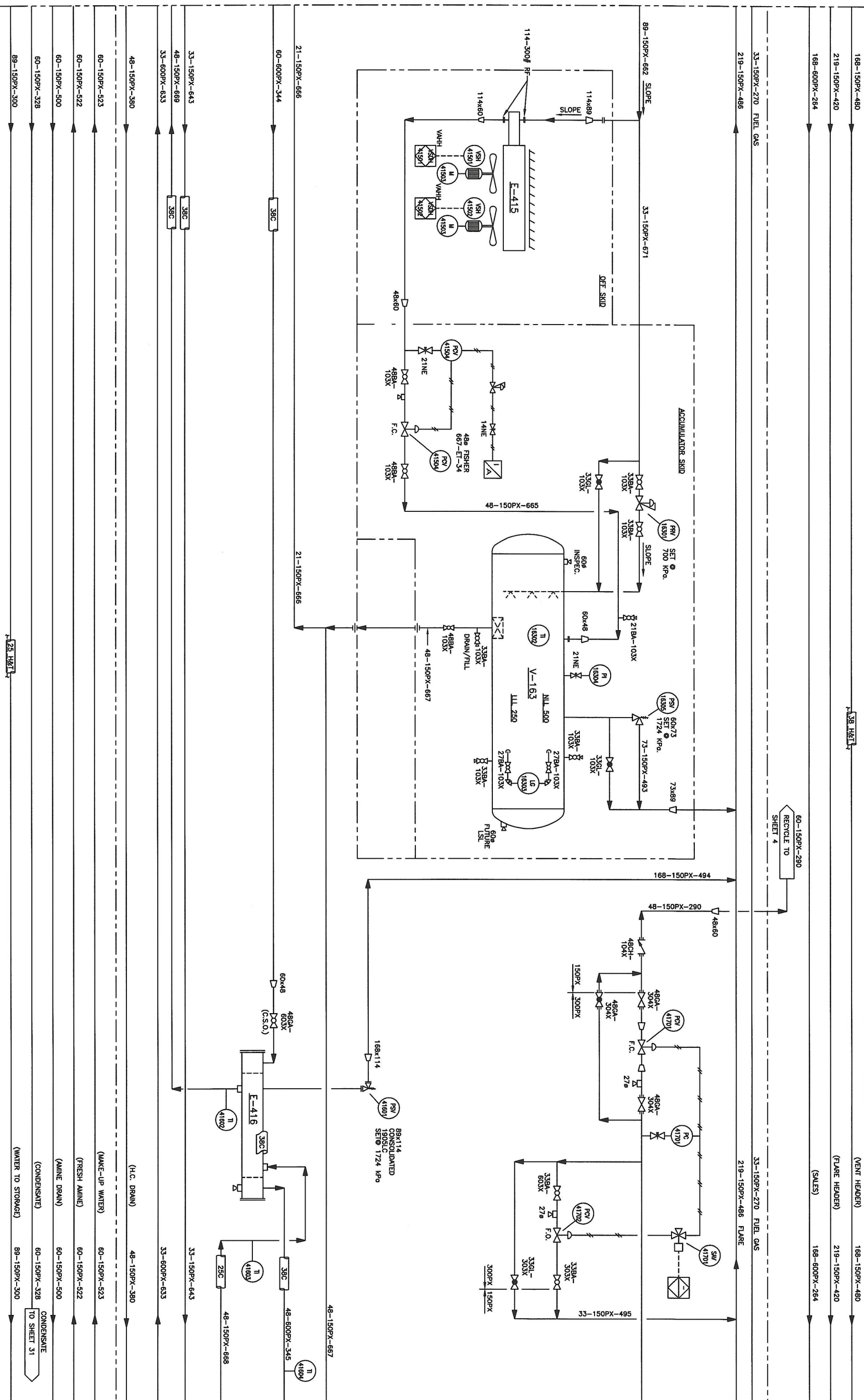
SHEET NUMBER	DRAWING NUMBER	REV
29 OF 36	15-10-62-06-W5-3029	10

E-415
REFRIGERANT CONDENSER
FW DRIVER : (2) 15 HP, TFC
1800 RPM, 460/3/60 XP
2088 RPM @ 95°C

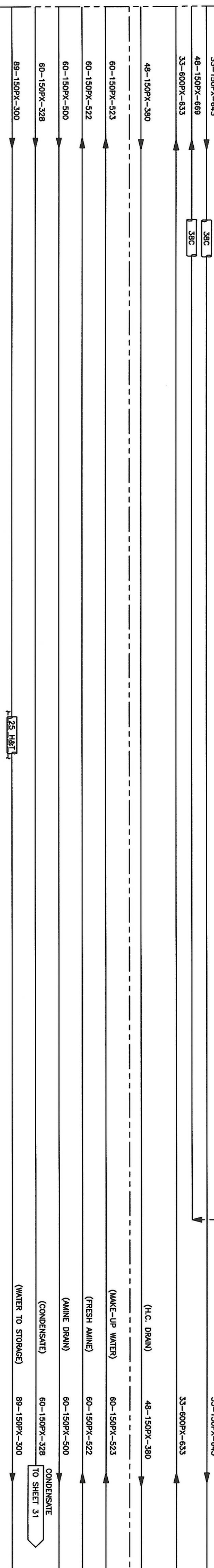
V-163
REFRIGERANT ACCUMULATOR
702 O.D. x 3048 S/S
1724 RPM, @ -28.5/65°C, 1.59mm CA

E-416
REFRIGERANT SUBCOOLER
168 O.D. x 6096 TS/TS
TS : 69.63 KPa, @ -28.5/65°C, 1.59mm CA
SS : 1724 RPM, @ -28.5/65°C, 1.59mm CA

FOR CONTINUATION SEE SHEET 29



FOR CONTINUATION SEE SHEET 31



(H.C. DRAIN) 48-150PX-380
 (MAKE-UP WATER) 60-150PX-523
 (FRESH AMINE) 60-150PX-522
 (AMINE DRAIN) 60-150PX-500
 (CONDENSATE) 60-150PX-328
 (WATER TO STORAGE) 89-150PX-300
 CONDENSATE TO SHEET 31

SHEET NUMBER	DRAWING NUMBER
30 OF 36	15-10-62-06-W5-3030

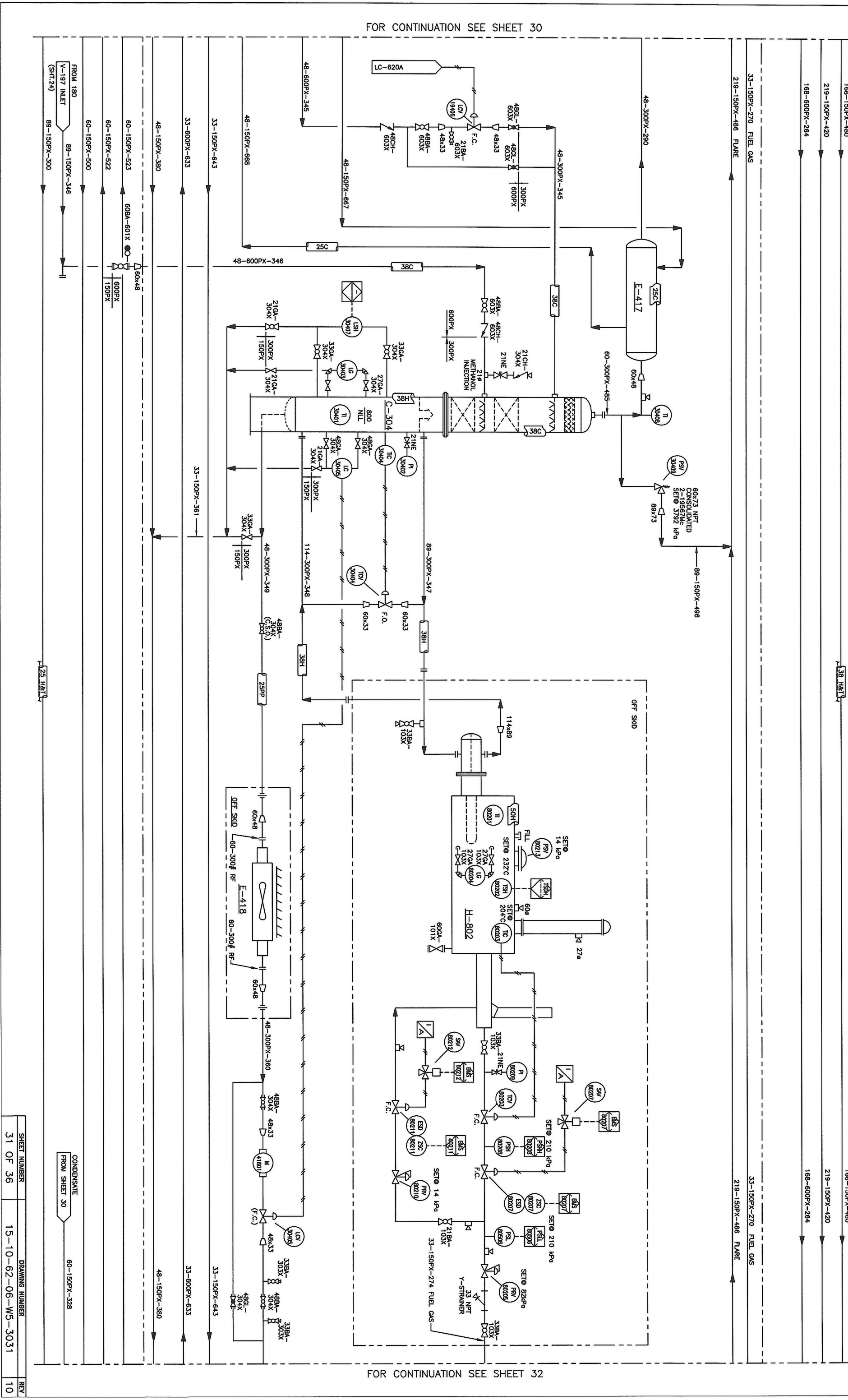
REV
10

E-417
OVERHEAD/C3 SUBCOOLER EXCHANGER
 48 O.D. x 89 O.D. x 6006
 TS : 3792 KPa @ -28.8/20°C, 1.59mm CA
 SS : 1724 KPa @ -28.8/20°C, 1.59mm CA

C-304
DETHANIZER
 36 O.D. x 14583 S/S
 3792 KPa @ -28.8/20°C, 1.59mm CA
 PACKING 38mm CS PALL RINGS
 (2) BIDS 4972mm HIGH

H-802
DETHANIZER REBOLLER
 914 O.D. x 3688 L
 TS : 3792 KPa @ -28.8/23°C, 1.59 CA
 SS : A1M 101 KPa @ 287°C

E-418
PRODUCT COOLER
 COMMON FRAME WITH E-415
 3792 KPa @ 20°C



FOR CONTINUATION SEE SHEET 30

FOR CONTINUATION SEE SHEET 32

SHEET NUMBER	31 OF 36	DRAWING NUMBER	15-10-62-06-W5-3031	REV	10
--------------	----------	----------------	---------------------	-----	----

CONDENSATE
 FROM SHEET 30
 60-150PX-328

25 H&T

38 H&T

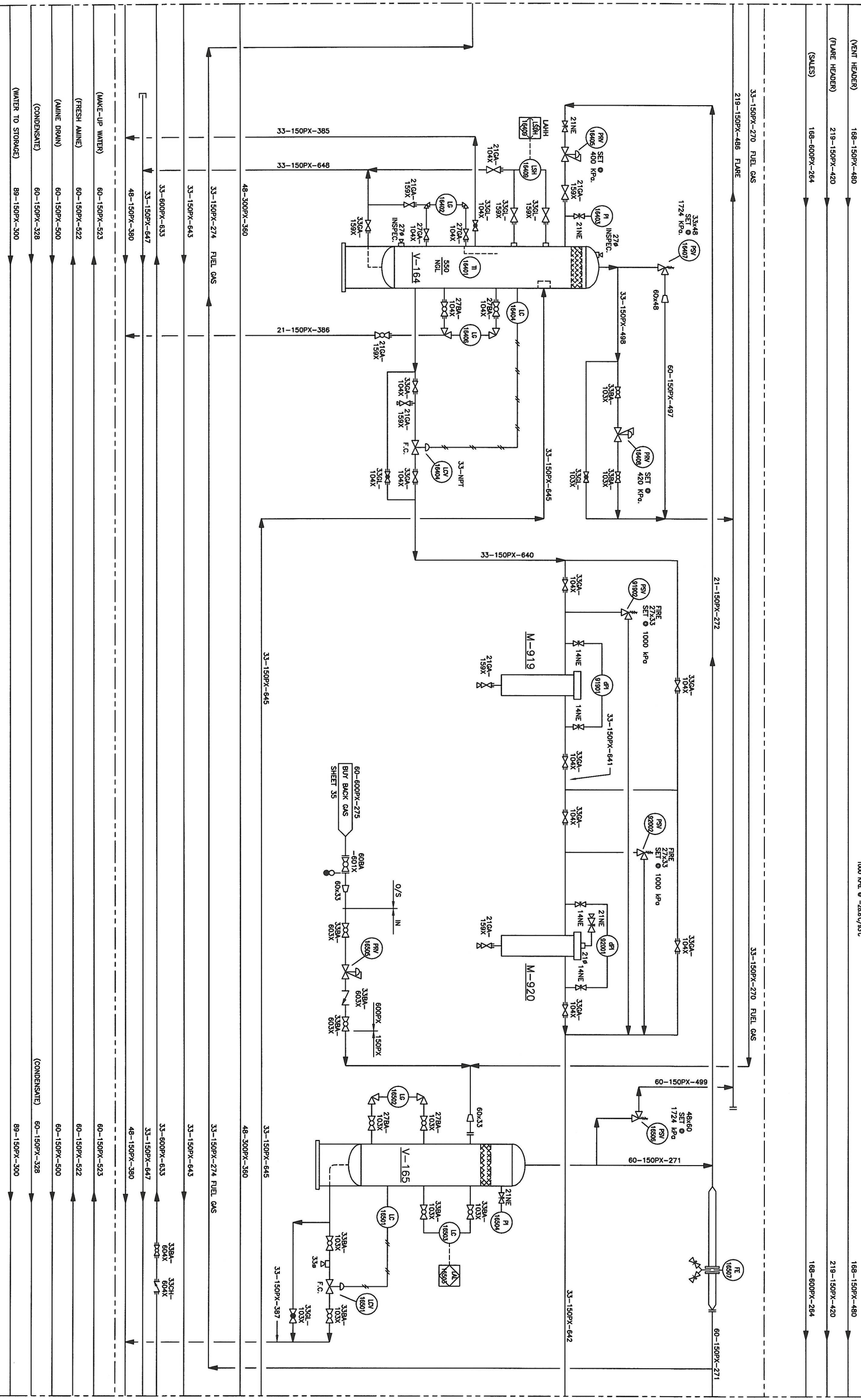
V-164
GLYCOL FLASH TANK
324 O.D. x 2286 S/S
1724 KPa. @ -28.8/35°C, 1.59mm CA

M-919
GLYCOL FILTER
CUMO MODEL 3000/2
9653 KPa. @ -28.8/35°C
5L @ 10 MICRON

M-920
CARBON ABSORBER
PSL STD.
324 O.D. x 780 O/A
1 1120C ELEMENT HOUSING
1000 KPa. @ -28.8/35°C

V-165
FUEL GAS STRUBBER
324 x 1524 S/S
1724 KPa. @ -28°C/35°C, 1.59mm CA

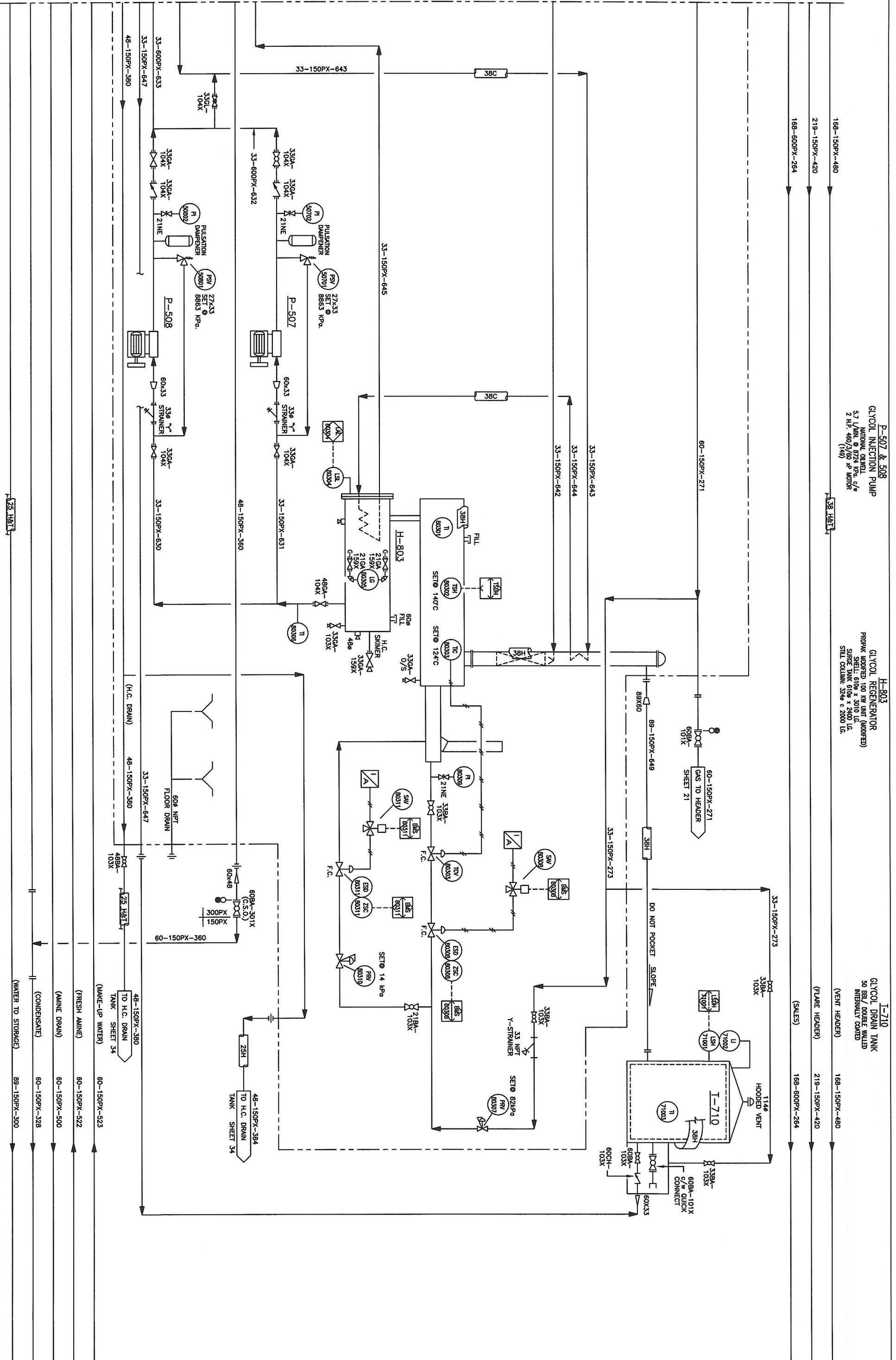
FOR CONTINUATION SEE SHEET 31



FOR CONTINUATION SEE SHEET 33

- (VENT HEADER) 168-150PX-480
- (FLARE HEADER) 219-150PX-420
- (SALES) 168-600PX-284
- 33-150PX-270 FUEL GAS
- 219-150PX-486 FLARE
- 33-150PX-274 FUEL GAS
- 33-150PX-643
- 33-600PX-633
- 33-150PX-647
- 48-150PX-380
- (MAKE-UP WATER) 60-150PX-523
- (FRESH AMINE) 60-150PX-522
- (AMINE DRAIN) 60-150PX-500
- (CONDENSATE) 60-150PX-328
- (WATER TO STORAGE) 89-150PX-300

SHEET NUMBER	DRAWING NUMBER
32 OF 36	15-10-62-06-W5-3032
REV	
10	



SHEET NUMBER	33 OF 36	DRAWING NUMBER	15-10-62-06-W5-3033	REV	10
--------------	----------	----------------	---------------------	-----	----

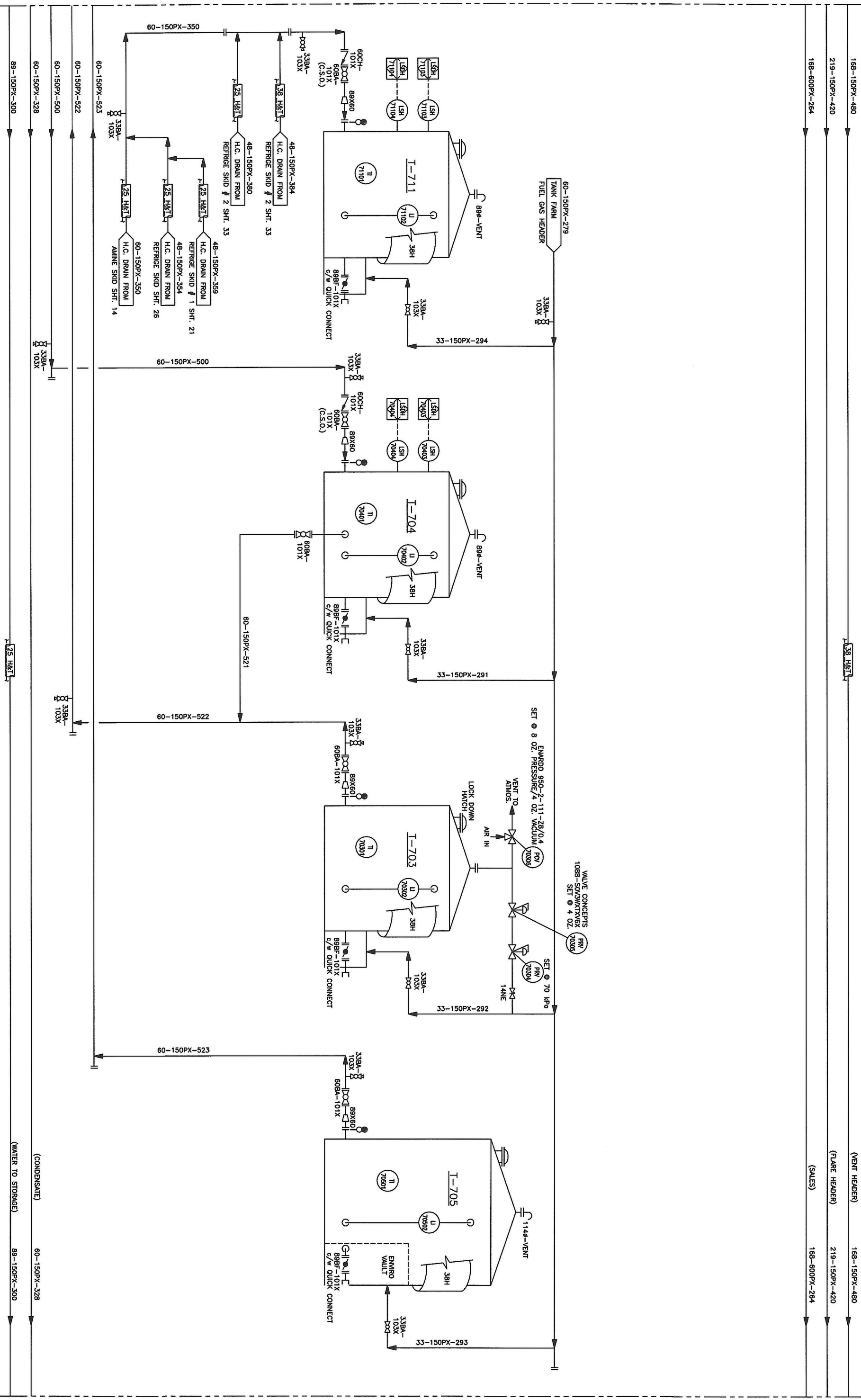
FOR CONTINUATION SEE SHEET 33

I-711
H.C. DRAIN TANK
100 BBL. (16 m³)
3099 # X 2133 HIGH
INTERIALLY COATED

I-704
AMINE DRAIN TANK
100 BBL. (16 m³)
3099 # X 2133 HIGH

I-703
FRESH AMINE TANK
100 BBL. (16 m³)
3099 # X 2133 HIGH

I-705
MAKE-UP WATER TANK
200 BBL. (32 m³)
3553 # X 3048 HIGH
INTERIALLY COATED



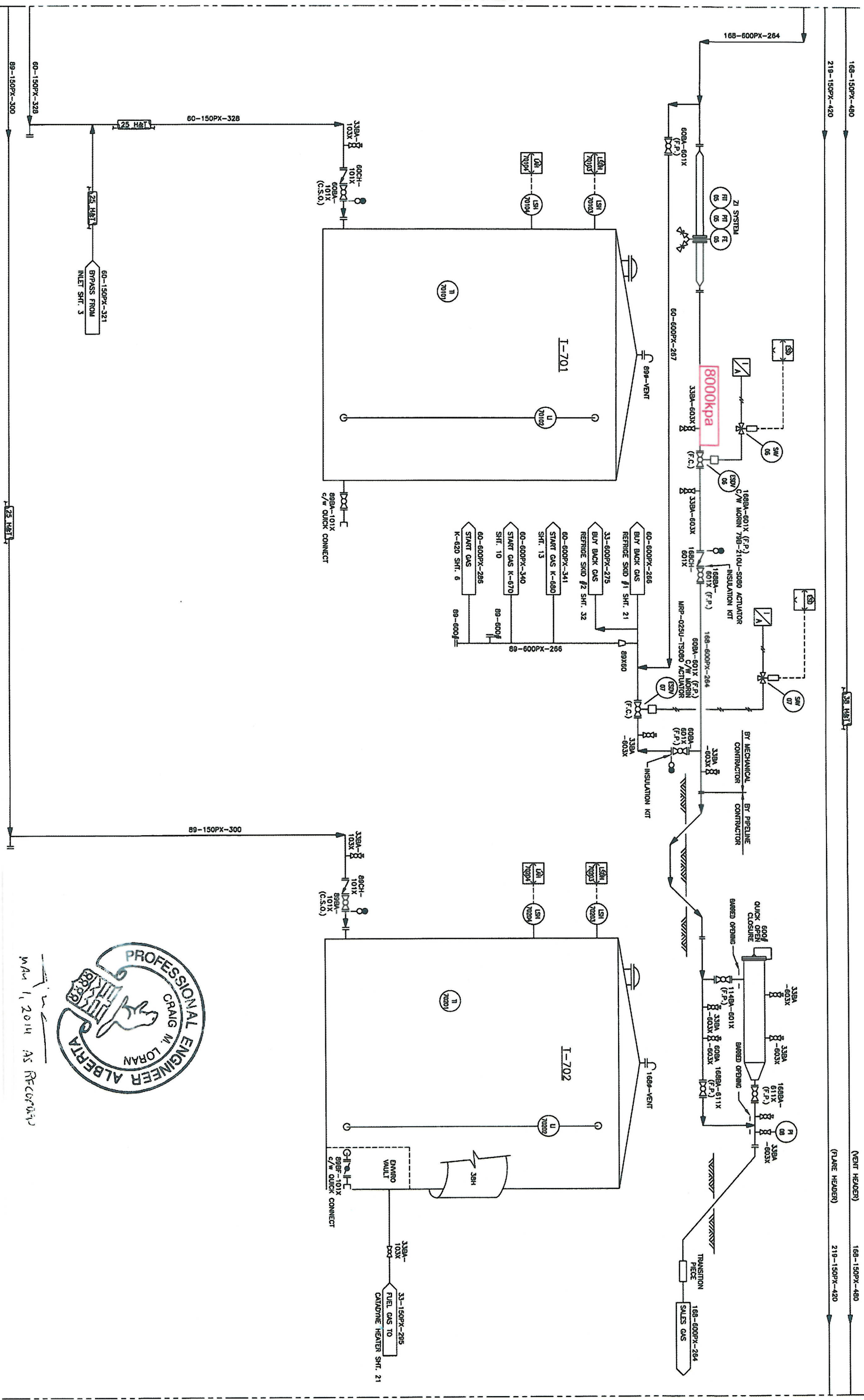
FOR CONTINUATION SEE SHEET 35

SHEET NUMBER	DRAWING NUMBER	REV
34 OF 36	15-10-62-06-W5-3034	10

FOR CONTINUATION SEE SHEET 34

I-701
CONDENSATE TANK
400 BBL. (64 m³)
3658 Ø x 6098 HIGHT

I-702
PRODUCED WATER TANK
400 BBL. (64 m³)
3658 Ø x 6098 HIGHT
INTERMEDIATE CORNER



FOR CONTINUATION SEE SHEET 36



MAY 1, 2014 AS RECORDED

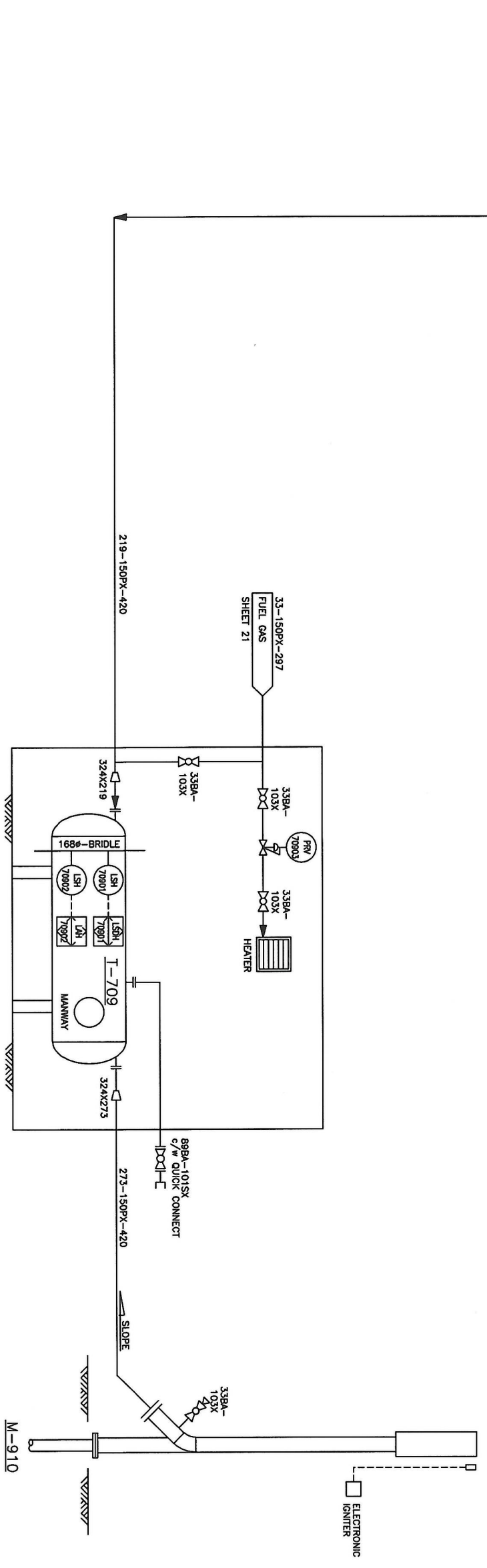
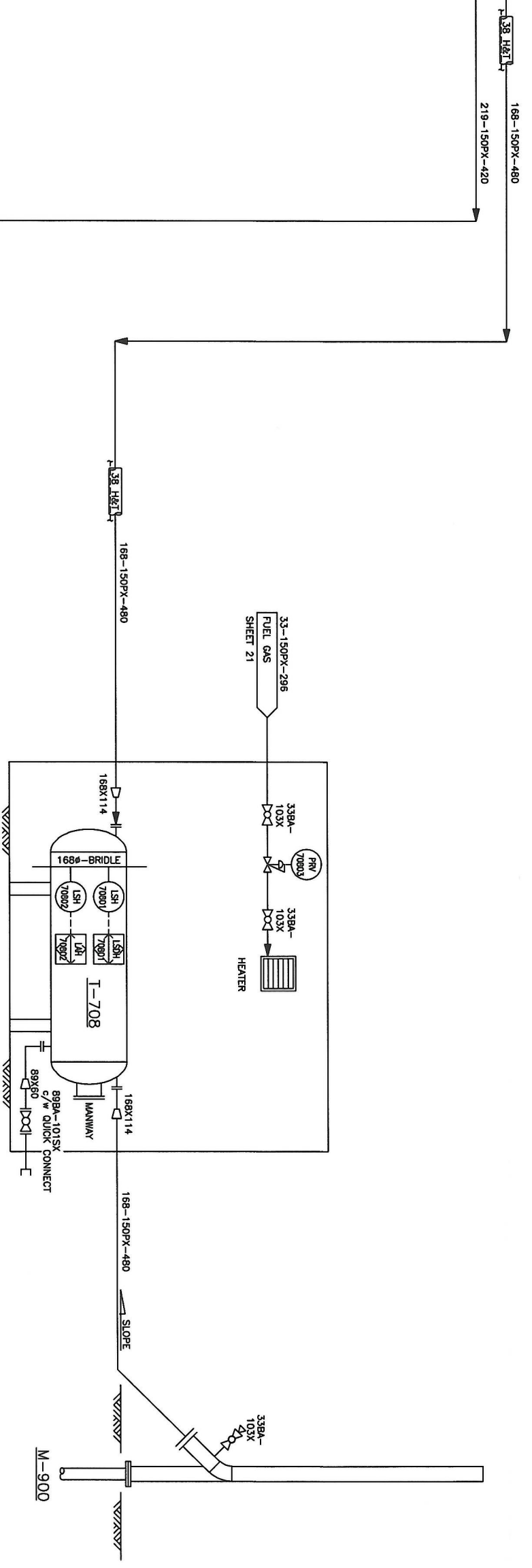
SHEET NUMBER	DRAWING NUMBER	REV
35 OF 36	15-10-62-06-W5-3035	10

I-708
VENT KNOCKOUT DRUM
914 O.D. X 2438 S/S

I-709
FLARE KNOCKOUT DRUM
1829 O.D. X 6096 S/S

M-900
VENT STACK
1694 X

M-910
FLARE STACK
2739 X 15240 HIGH



SHEET NUMBER	DRAWING NUMBER	REV
36 OF 36	15-10-62-06-WS-3036	10