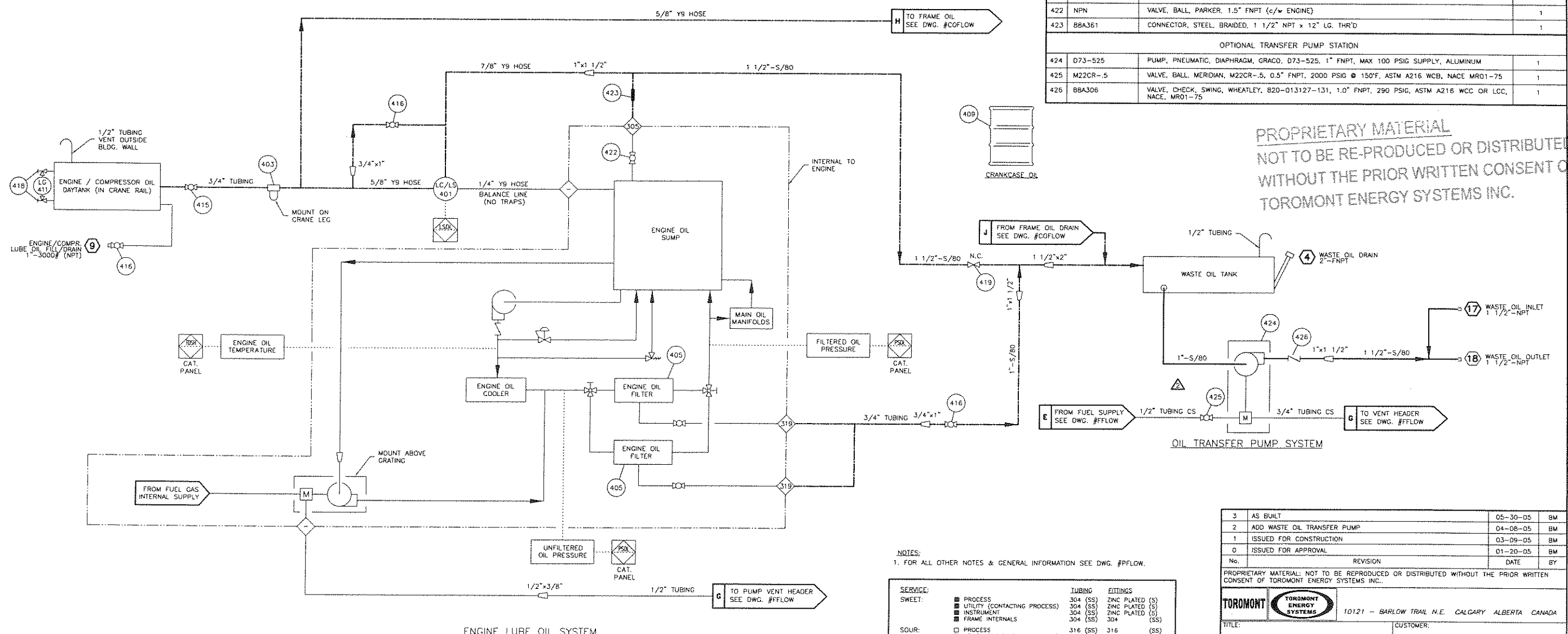


TOROMONT ENERGY SYSTEMS

JUN 02 2005
AS BUILT

PER _____

BILL OF MATERIALS			
No.	PART No.	DESCRIPTION	QUANTITY
401	LCM-12	CONTROLLER, LEVEL, KENCO, LCM-12, 0.5" FNPT, 6.5 PSIG MAWP, MAX 180°F, D.5" POST MOUNT, ALUMINUM, CSA CLASS II, TYPE 4	1
402	-	-	-
403	405-047	FILTER, HOUSING, OIL, GEMINI, 0.75" FNPT, c/w BALDWIN FILTER ELEMENT, 8T251	1
404	-	-	-
405	NPN	FILTER, ELEMENT, OIL (c/w ENGINE)	6
406	-	-	-
407	-	-	-
408	-	-	-
409	8BE247	OIL, LUBE, ESSO, ESSOLUBE GMPLUS-40 (SEE STEP #921)	1230 L
410	-	-	-
411	8BE057	SIGHT GLASS, REDLINE, PEACOCK, 41100110B, 0.625" OD, 330 PSIG @ 100°F, 12" LG	1
412	-	-	-
413	-	-	-
414	-	-	-
415	M22CR-.75	VALVE, BALL, MERIDIAN, M22CR-.75, 0.75" FNPT, 2000 PSIG @ 150°F, ASTM A216 WCB, NACE MR01-75	1
416	M22CR-1.0	VALVE, BALL, MERIDIAN, M22CR-1.0, 1" FNPT, 2000 PSIG @ 150°F, ASTM A216 WCB, NACE MR01-75	3
417	-	-	-
418	1TC	VALVE, GAUGE, DANIEL, 209-01-049C 1TC, 0.5" FNPT X 0.625" TUBE, 3600 PSIG @ 250°F	1
419	NPN	VALVE, GATE, NAVCO, 1 1/2" FNPT CLASS 800, 800 PSIG @ 850°F, REG. PORT, ASTM A105	1
420	-	-	-
421	-	-	-
422	NPN	VALVE, BALL, PARKER, 1.5" FNPT (c/w ENGINE)	1
423	BBA361	CONNECTOR, STEEL, BRAIDED, 1 1/2" NPT x 12" LG, THR'D	1
OPTIONAL TRANSFER PUMP STATION			
424	D73-525	PUMP, PNEUMATIC, DIAPHRAGM, GRACO, D73-525, 1" FNPT, MAX 100 PSIG SUPPLY, ALUMINUM	1
425	M22CR-.5	VALVE, BALL, MERIDIAN, M22CR-.5, 0.5" FNPT, 2000 PSIG @ 150°F, ASTM A216 WCB, NACE MR01-75	1
426	BBA306	VALVE, CHECK, SWING, WHEATLEY, 820-013127-131, 1.0" FNPT, 290 PSIG, ASTM A216 WCC OR LCC, NACE, MR01-75	1



PROPRIETARY MATERIAL
NOT TO BE RE-PRODUCED OR DISTRIBUTED
WITHOUT THE PRIOR WRITTEN CONSENT OF
TOROMONT ENERGY SYSTEMS INC.

NOTES:
1. FOR ALL OTHER NOTES & GENERAL INFORMATION SEE DWG. #PFLOW.

SERVICE:	TUBING	FITTINGS
■ PROCESS	304 (SS)	ZINC PLATED (S)
■ UTILITY (CONTACTING PROCESS)	304 (SS)	ZINC PLATED (S)
■ INSTRUMENT	304 (SS)	ZINC PLATED (S)
■ FRAME INTERNALS	304 (SS)	304 (SS)
□ PROCESS	316 (SS)	316 (SS)
□ UTILITY (CONTACTING PROCESS)	316 (SS)	316 (SS)
□ INSTRUMENT	304 (SS)	ZINC PLATED (S)
□ FRAME INTERNALS	304 (SS)	304 (SS)

3	AS BUILT	05-30-05	BM
2	ADD WASTE OIL TRANSFER PUMP	04-08-05	BM
1	ISSUED FOR CONSTRUCTION	03-09-05	BM
0	ISSUED FOR APPROVAL	01-20-05	BM
No.	REVISION	DATE	BY
PROPRIETARY MATERIAL: NOT TO BE REPRODUCED OR DISTRIBUTED WITHOUT THE PRIOR WRITTEN CONSENT OF TOROMONT ENERGY SYSTEMS INC.			
		10121 - BARLOW TRAIL N.E. CALGARY ALBERTA CANADA	
TITLE: ENGINE OIL FLOW DIAGRAM CATERPILLAR G3606TAW-LE		CUSTOMER: PARAMOUNT RESOURCES LTD. DELA SWEET GAS COMPRESSOR LSD: 7-15-32-18 #44	
SCALE: NONE	DATE: 01-20-05	BY: BM	DATE RELEASED: 05/30/05
STEP # 540	UNIT # 31262	DRAWING NO.: 31262-EOPFLOW	REV. 3