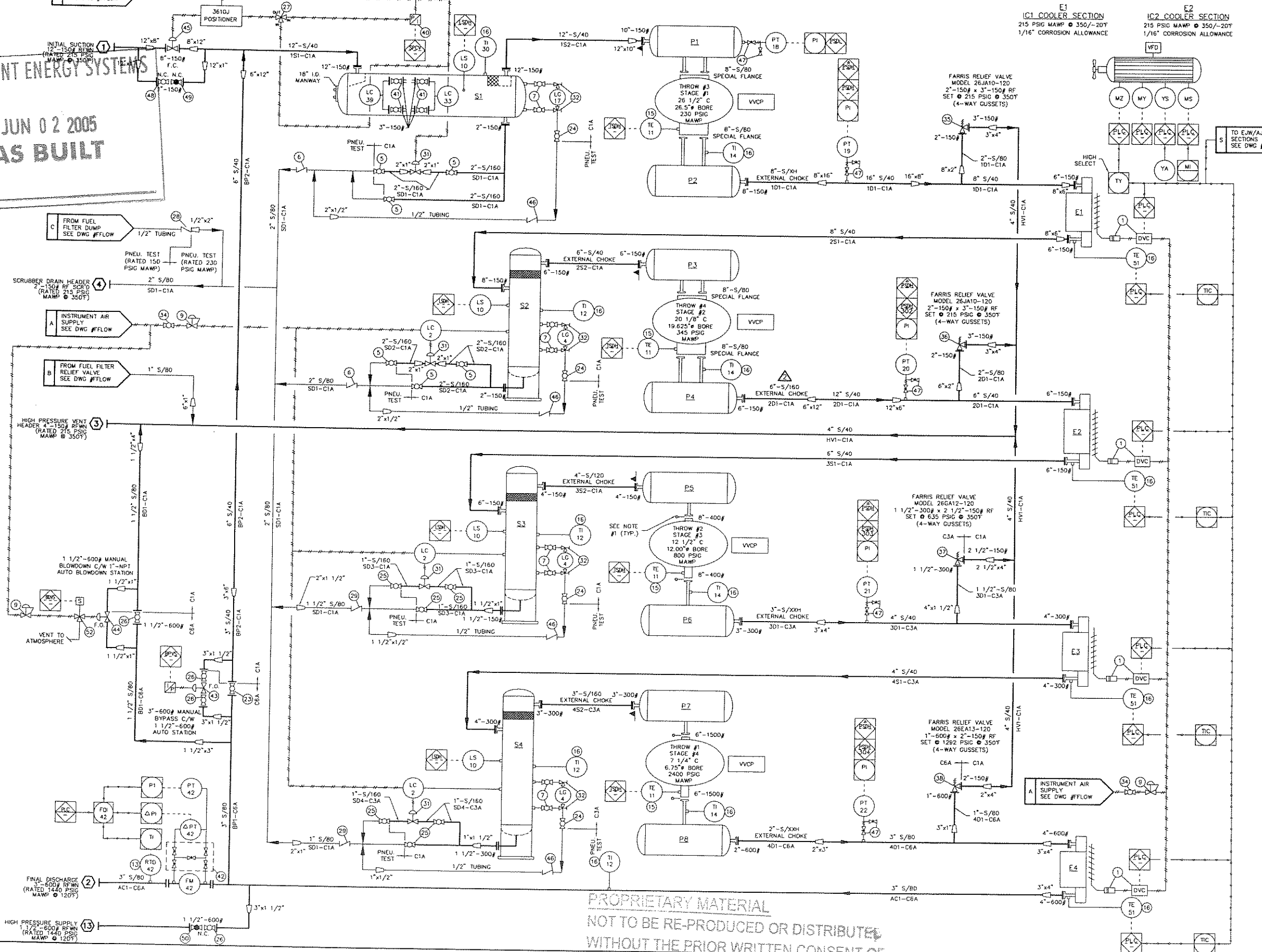


TOROMONT ENERGY SYSTEMS
JUN 02 2005
AS BUILT
 PER

S1	S2	S3	S4	P1	P2	P3	P4	P5	P6	P7	P8
SUCTION SEPARATOR 42" x 84" S/S 215 PSIG MAMP @ 350T 1/16" CORROSION ALLOWANCE S/N: 31262S1	INTERSTAGE #1 SCRUBBER 30" x 72" S/S 215 PSIG MAMP @ 350T 1/16" CORROSION ALLOWANCE S/N: 31262S2	INTERSTAGE #2 SCRUBBER 24" x 66" S/S 215 PSIG MAMP @ 350T 1/16" CORROSION ALLOWANCE S/N: 31262S3	INTERSTAGE #3 SCRUBBER 18" x 60" S/S 645 PSIG MAMP @ 350T 1/16" CORROSION ALLOWANCE S/N: 31262S4	STAGE #1 SUCTION BOTTLE 30" x 60" S/S 215 PSIG MAMP @ 350T 1/16" CORROSION ALLOWANCE S/N: 31262P1	STAGE #1 DISCHARGE BOTTLE 24" x 72" S/S 215 PSIG MAMP @ 350T 1/16" CORROSION ALLOWANCE S/N: 31262P2	STAGE #2 SUCTION BOTTLE 24" x 36" S/S 215 PSIG MAMP @ 350T 1/16" CORROSION ALLOWANCE S/N: 31262P3	STAGE #2 DISCHARGE BOTTLE 24" x 36" S/S 215 PSIG MAMP @ 350T 1/16" CORROSION ALLOWANCE S/N: 31262P4	STAGE #3 SUCTION BOTTLE 18" x 36" S/S 215 PSIG MAMP @ 350T 1/16" CORROSION ALLOWANCE S/N: 31262P5	STAGE #3 DISCHARGE BOTTLE 20" x 38" S/S 645 PSIG MAMP @ 350T 1/16" CORROSION ALLOWANCE S/N: 31262P6	STAGE #4 SUCTION BOTTLE 14" x 38" S/S 645 PSIG MAMP @ 350T 1/16" CORROSION ALLOWANCE S/N: 31262P7	STAGE #4 DISCHARGE BOTTLE 16" x 36" S/S 1292 PSIG MAMP @ 350T 1/16" CORROSION ALLOWANCE S/N: 31262P8



MATERIAL SPECIFICATIONS:

PAINT: OVERALL UNIT: VALSPAR 20-F-34 "WARM GREY".
 PRIMER: COMMERCIAL IRON OXIDE NON-LIFTING PRIMER.
 PROCESS PIPING: 10% X-RAY - RT2, 1/16" CORROSION ALLOWANCE, SANDBLAST SPOOLS AFTER SUCTION SCREEN.
 VESSELS: 10% X-RAY - RT2, 1/16" CORROSION ALLOWANCE, INTERNALLY SANDBLAST SUCTION BOTTLES.
 OIL: ESSOLUBE CMAPLUS-40 IN ENGINE & COMPRESSOR FRAME.
 GLYCOL: 50% ETHYLENE INHIBITED GLYCOL/WATER SOLUTION IN ENGINE & AUXILIARY JACKET WATER SYSTEMS.
 BILL OF MATERIALS: ON SEPARATE SHEET PROVIDED WITH DRAWING.

TUBING SERVICES	TUBING	FITTINGS
SWEET: PROCESS	304 (SS)	ZINC PLATED (S)
UTILITY - CONTACTING PROCESS	304 (SS)	ZINC PLATED (S)
INSTRUMENT	304 (SS)	ZINC PLATED (S)
FRAME INTERNALS	316 (SS)	316 (SS)

NOTE #1: SPACER PLATES ARE PROVIDED FOR FUTURE INSTALLATION OF ORIFICE PLATES (IF REQUIRED). STAGES #3&4 ONLY.
 NOTE #2: ALL THREADED PIPING ON SCRUBBERS IS SCH. 160.
 NOTE #3: VESSELS REGISTERED IN AB ONLY.
 NOTE #4: BOLTING ON ALL PROCESS FLANGE CONNECTIONS IS: SA-193-B7 STUDS, SA-194-2H NUTS & 316SS GASKETS.
 NOTE #5: ALL AIR INSTRUMENTS TO BE VENTED TO ATMOSPHERE.
 NOTE #6: -

GENERAL INFORMATION:

COMPR. FRAME: - ARIEL JGC4/4
 - RATED RPM = 1000
 - SERIAL NUMBER = F-20135

ENGINE: - CATERPILLAR G3606TAW-LE
 - RATED 1775 HP @ 1000 RPM
 - SERIAL NUMBER = 42500447

PANEL: - ALLEN BRADLEY - COMPACTLOGIX
 - SERIAL NUMBER = 60260

COOLER: - AIR-X-CHANGERS - 156H-118-24
 - SERIAL NUMBER = 054019

CYLINDERS: - THROW #1 - SERIAL NUMBER = C-68147
 - THROW #2 - SERIAL NUMBER = C-68146
 - THROW #3 - SERIAL NUMBER = C-68144
 - THROW #4 - SERIAL NUMBER = C-68145

LEGEND:

- PROCESS
- UTILITY
- PNEUMATIC TUBING
- ELECTRIC WIRING
- SPACER
- SPECTACLE BLIND
- SCREEN (CONE STRAINER)
- PANEL CONNECTION - PNEUMATIC
- PANEL CONNECTION - ELECTRIC
- PANEL ALARM / SHUTDOWN
- LOCAL MOUNTED INSTRUMENT
- PANEL MOUNTED INSTRUMENT
- PNEUMATIC TO ELECTRIC
- ENGINE CONNECTION

NOTE: SWEET PROCESS GAS

No.	REVISION	DATE	BY
3	AS BUILT	05-30-05	BM
2	REVISE STAGE #2 DISCHARGE EXT. CHOKE TO BE S/160	03-11-05	BM
1	ISSUED FOR CONSTRUCTION	03-09-05	BM
0	ISSUED FOR APPROVAL	01-19-05	BM

TOROMONT ENERGY SYSTEMS	10121 - BARLOW TRAIL N.E. CALGARY ALBERTA CANADA
TITLE: PROCESS FLOW DIAGRAM CATERPILLAR G3606TAW-LE / ARIEL JGC/4-4 AIR-X-CHANGERS 168-12	CUSTOMER: PARAMOUNT RESOURCES LTD. DELTA SWEET GAS COMPRESSOR LSD: 7-15-32-18 W&M
SCALE: NONE STEP # 410	DATE: 01-19-05 UNIT # 31262 DATE RELEASED: 01-19-05 DRAWING NO.: 31262-PFLOW REV. 3

PROPRIETARY MATERIAL
 NOT TO BE RE-PRODUCED OR DISTRIBUTED
 WITHOUT THE PRIOR WRITTEN CONSENT OF
 TOROMONT ENERGY SYSTEMS INC.

FILE NAME: M:\31262\Drawing\Flow\31262PFLOW-3.dwg
 PLOT DATE: Jun 02, 2005 10:12:00
 PLOTTED BY: bmcchen