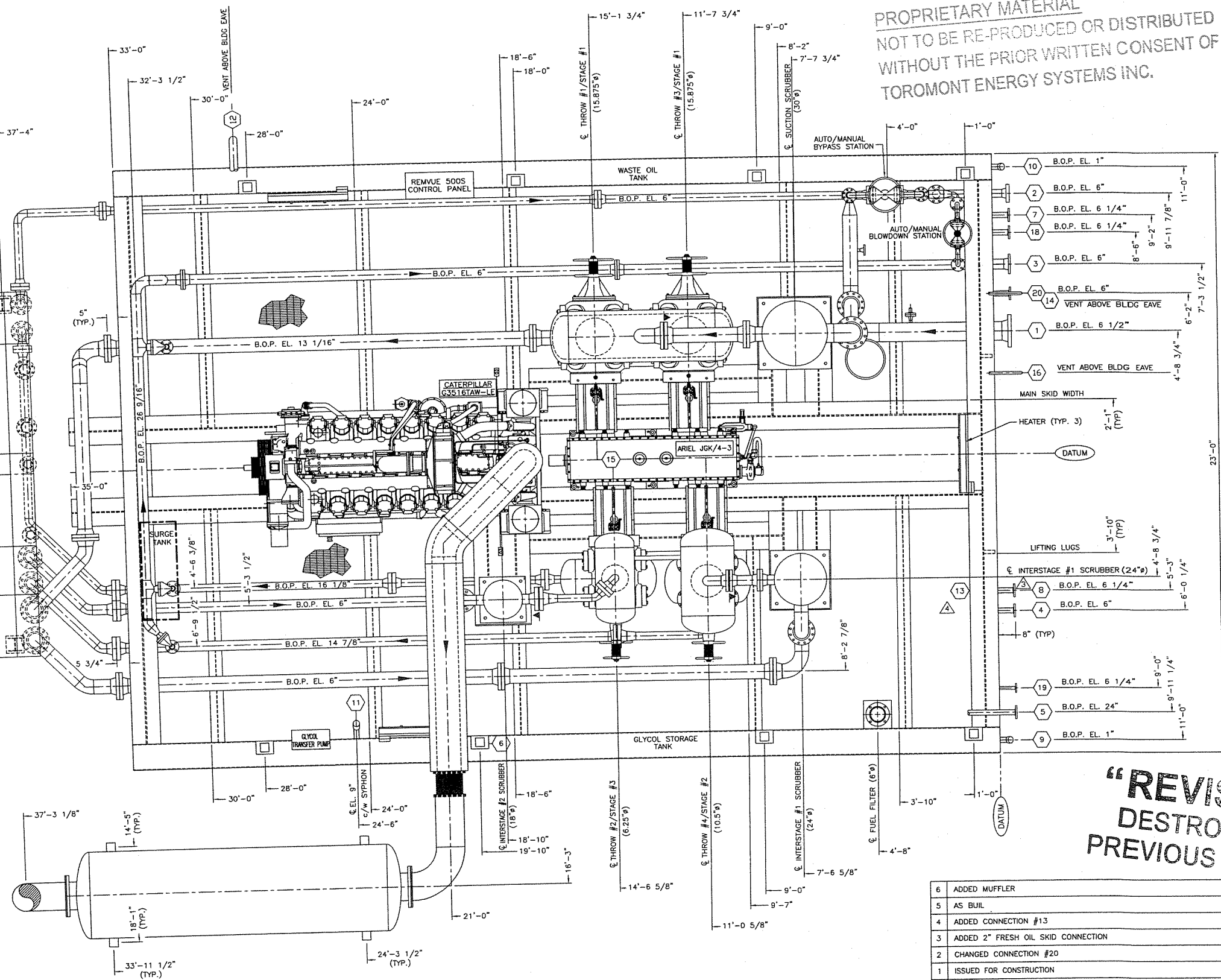
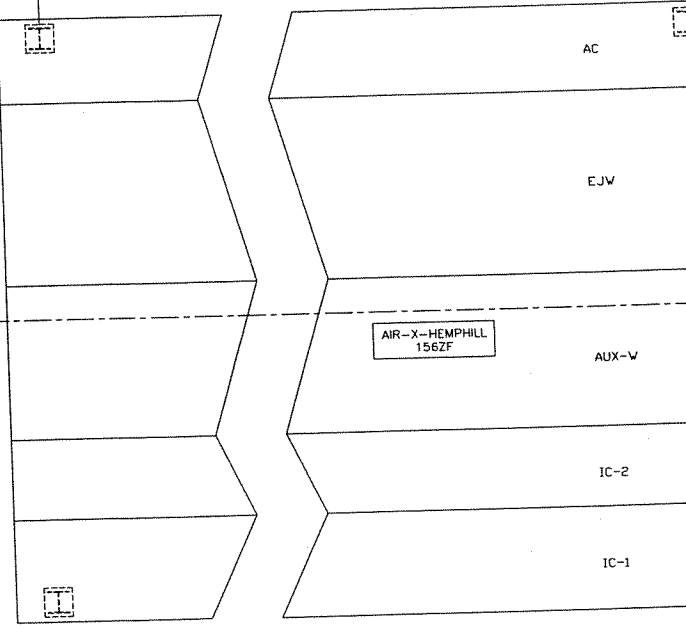


TOROMONT ENERGY SYSTEMS
 DEC 07 2005
 AS BUILT
 PER _____

PROPRIETARY MATERIAL
 NOT TO BE RE-PRODUCED OR DISTRIBUTED
 WITHOUT THE PRIOR WRITTEN CONSENT OF
 TOROMONT ENERGY SYSTEMS INC.

OVERALL PACKAGE WIDTH
 61'-2 7/8"
 60'-3"



OVERALL SKID WIDTH
 23'-0"

TOROMONT ENERGY SYSTEMS
 OCT 12 2005
 ISSUED FOR CONSTRUCTION
 PER _____

"REVISED"
 DESTROY ALL
 PREVIOUS ISSUES

| GENERAL SPECIFICATIONS | |
|---|---|
| OVERALL PACKAGE LENGTH (FT) | 61'-2 7/8" |
| OVERALL PACKAGE WIDTH (FT) | 23'-0" |
| OVERALL PACKAGE HEIGHT (FT) (LESS STACK) | - |
| OVERALL PACKAGE WEIGHT (LBS) | - |
| GLYCOL STORAGE CAPACITY (U.S. GAL.) | 453 U.S. GAL. |
| WASTE OIL STORAGE CAPACITY (U.S. GAL.) | 453 U.S. GAL. |
| SOUR WASTE OIL STORAGE CAPACITY (U.S. GAL.) | N/A |
| LUBE OIL DAY TANKS | <input type="checkbox"/> 56 U.S. GAL. <input type="checkbox"/> CRANE RAILS 125 U.S. GAL. |
| BRIDGE CRANE | <input type="checkbox"/> YES <input type="checkbox"/> NO <input type="checkbox"/> 2-TON <input type="checkbox"/> 3-TON <input type="checkbox"/> 5-TON |
| SEAL PAN | <input type="checkbox"/> YES <input type="checkbox"/> NO <input type="checkbox"/> FLAT <input type="checkbox"/> SLOPED |
| LOADING METHOD | <input type="checkbox"/> JACK & ROLL <input type="checkbox"/> LIVE ROLL <input type="checkbox"/> CRANE |

NOTES:
 1. ALL DIMENSIONS TAKEN FROM BOTTOM OF SKID.
 2. ALL OTHER NOTES FOUND ON DWG. #PFLOW.

- CUSTOMER CONNECTIONS
- | | | | |
|------------------------------|------------------|----------------------------------|------------------------|
| 1 INITIAL SUCTION | 8"-300# RFWN | 10 WASTE OIL TANK DRAIN | 2"-3000# (NPT) |
| 2 FINAL DISCHARGE | 3"-600# RFWN | 11 GLYCOL STANDPIPE | 2"-3000# (NPT) |
| 3 HIGH PRESSURE VENT HEADER | 4"-150# RFWN | 12 START GAS VENT HEADER | 3"-PIPE C/w BIRDSCREEN |
| 4 SCRUBBER DRAIN HEADER | 2"-150# RF SCR'D | 13 LUBE OIL FILL | 3/4" RUBBER HOSE |
| 5 FUEL GAS HEADER | 2"-150# RF SCR'D | 14 LOW PRESSURE PUMP VENT HEADER | 1"-PIPE C/w BIRDSCREEN |
| 6 GLYCOL FILL | 3/4" RUBBER HOSE | 15 LOCAL COMPRESSOR OIL FILL | 2"-NPT |
| 7 INSTRUMENT AIR SUPPLY | 2"-150# RF SCR'D | 16 LOW PRESSURE GAS VENT | 1"-PIPE C/w BIRDSCREEN |
| 8 ENGINE/COMPRESSOR OIL FILL | 2"-150# RF SCR'D | 17 - | - |
| 9 GLYCOL TANK DRAIN | 2"-3000# (NPT) | 18 START GAS HEADER | 2"-150# RF SCR'D |
| | | 19 FUEL GAS PSV VENT | 1"-150# RF SCR'D |
| | | 20 WASTE OIL PUMP DRAIN | 2"-150# RF SCR'D |

| No. | REVISION | DATE | BY |
|-----|------------------------------------|----------|----|
| 6 | ADDED MUFFLER | 10/03/05 | VS |
| 5 | AS BUILT | 09/15/05 | VS |
| 4 | ADDED CONNECTION #13 | 08/16/05 | VS |
| 3 | ADDED 2" FRESH OIL SKID CONNECTION | 08/08/05 | VS |
| 2 | CHANGED CONNECTION #20 | 08/03/05 | VS |
| 1 | ISSUED FOR CONSTRUCTION | 07/18/05 | VS |
| 0 | ISSUED FOR APPROVAL | 05/20/05 | VS |

PROPRIETARY MATERIAL: NOT TO BE REPRODUCED OR DISTRIBUTED WITHOUT THE PRIOR WRITTEN CONSENT OF TOROMONT ENERGY SYSTEMS INC.

| | |
|-------------------------|--|
| TOROMONT ENERGY SYSTEMS | 10121 - BARLOW TRAIL N.E. CALGARY ALBERTA CANADA |
|-------------------------|--|

TITLE: GENERAL ARRANGEMENT
 CATERPILLAR 3516 TAW-LE / ARIEL JGK/4-3
 AIR-X-HEMPHILL 156ZF

CUSTOMER: TRIDENT EXPLORATION CORP.
 c/o BDR ENGINEERING LTD.
 CBM COMPRESSOR STATION

SCALE: 1/2"=1'-0" DATE: 05/20/05 BY: VS DATE RELEASED: 10/10/05 RELEASED BY: MB
 W.O. # N/A UNIT # 31373 DRAWING NO. 31373-GA REV. 6