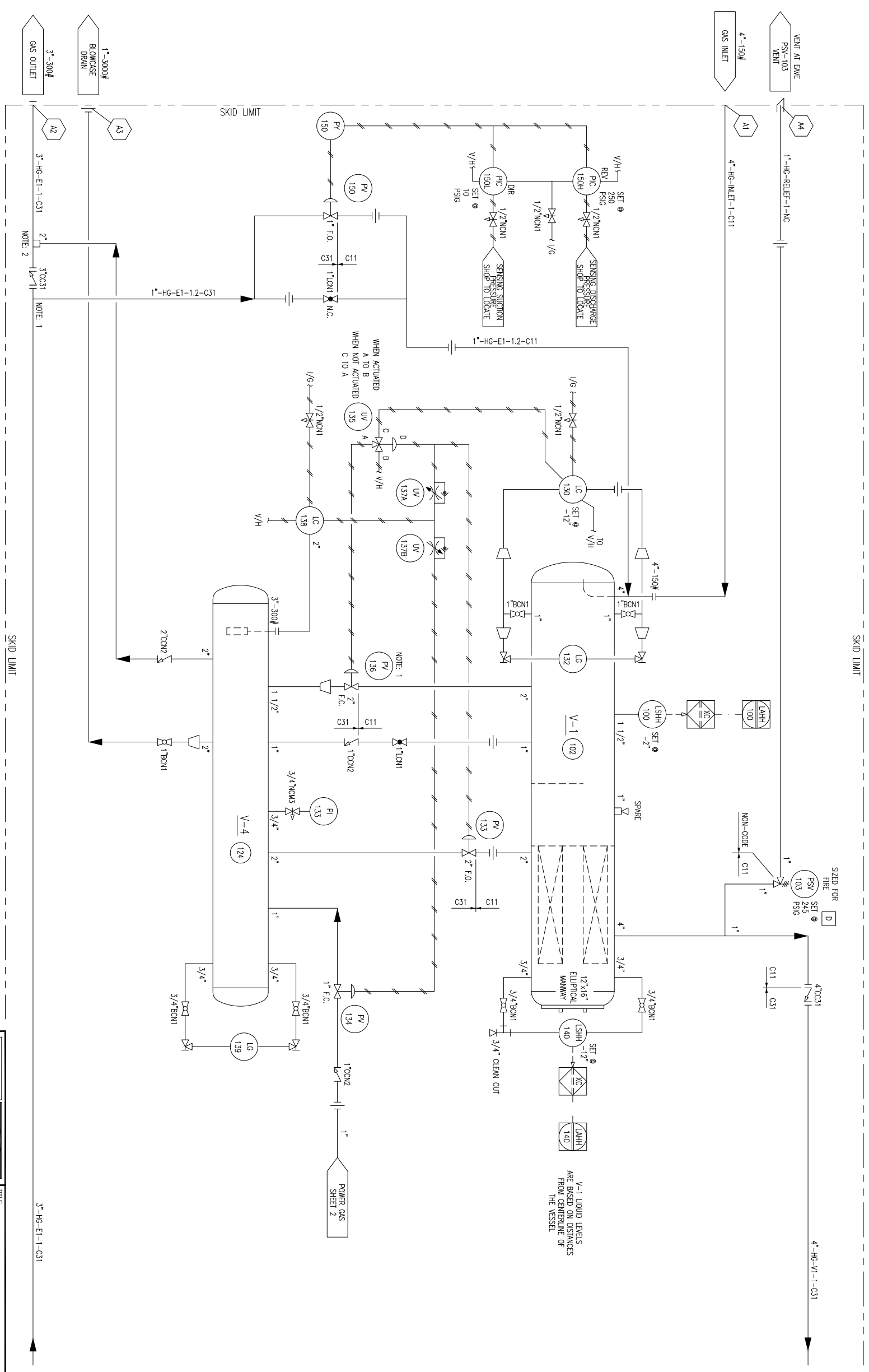


V-1
COMPRESSOR SUCTION FILTER
 SIZE: 30" O.D. X 90" S/S
 M.A.W.P.: 245 PSIG @ 250 DEG. F
 M.D.M.T.: -20 DEG F @ 245 PSIG
 C.A.: 0.0625"
 SHELL MATERIAL: SA-516-70
 HEAD MATERIAL: SA-516-70
 ELEMENTS: (8) JPMC-35349-V
 OPERATING WEIGHT: 3340 LBS.

V-4
BLOWCASE
 SIZE: 20" O.D. X 50" S/S
 M.A.W.P.: 375 PSIG @ 250 DEG. F
 M.D.M.T.: -20 DEG F @ 375 PSIG
 C.A.: 0.0625"
 SHELL MATERIAL: SA-106-B
 HEAD MATERIAL: SA-516-70
 OPERATING WEIGHT: 975 LBS.

SKID GENERAL NOTES:

- ELECTRICAL CLASSIFICATION: CLASS 1, DIV. II, GROUP D (WITH BUILDING GAS DETECTION TO BE SUPPLIED AS REQ'D BY OTHERS)
- MINIMUM DESIGN INDOOR TEMPERATURE: 50 DEG.F
- MAXIMUM DESIGN AMBIENT TEMPERATURE: 90 DEG.F
- COMPRESSOR SYSTEM OIL CHARGE: 34 USGAL
- COMPRESSOR OIL TYPE: S5-150
- ENGINE OIL CHARGE: 17 USGAL
- ENGINE OIL TYPE: ESSO G40, OR EQUAL
- ENGINE JACKET COOLANT CAPACITY: 26 USGAL
- ENGINE COOLANT: 50/50 ETHYLENE GLYCOL
- INSTRUMENT / FUEL GAS CONSUMPTION: 2000 SCFH
- START GAS CONSUMPTION: 550 SCFM
- ATMOSPHERIC PRESSURE: 13.4 PSIA
- ELEVATION: 2500 FT. DESIGN
- EXHAUST STACK: 1.2 TIMES EME HEIGHT



GENERAL NOTE: ALL TUBING TO BE SIZE ON SIZE UNLESS OTHERWISE NOTED
 NOTE: 1 TAKE CONNECTION FROM THE TOP OF PIPE
 NOTE: 2 TAKE CONNECTION FROM THE SIDE OF PIPE.

REV.	DESCRIPTION	DATE	BY	APPR.
1	ISSUED FOR CONSTRUCTION	SEP 10/04	DR	
2	AS BUILT	JAN 20/05	SB	

PERMIT TO PRACTICE STAMP	ENGINEER STAMP
--------------------------	----------------

TOROMONT PROCESS SYSTEMS	TOROMONT PROCESS SYSTEMS
------------------------------------	------------------------------------

DRAWN BY: GORD HOWE CHKD BY: D. ROUSSEAU APPR BY: D. ROUSSEAU CUST PO NO: 11603101	DATE: SEP 10, 2004 SCALE: N/A W.O. No: 11603101	TITLE: P & I FLOW DIAGRAM FOR: BURLINGTON RESOURCES 135HP - SE COMPRESSOR UNIT FRICK 151N COMPRESSOR
---	---	--