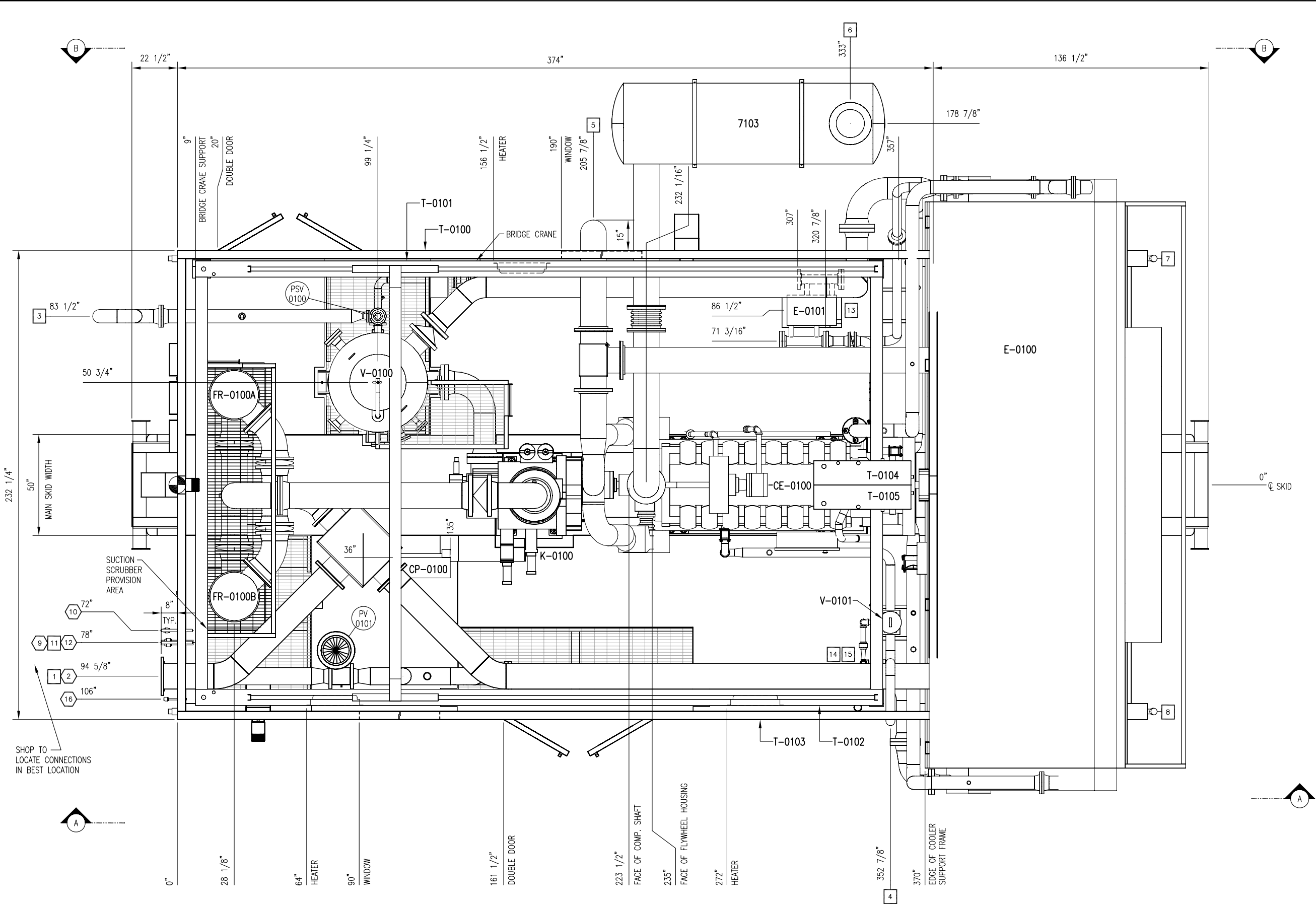


P:\10000 Projects\12517 Husky G3516LE Ariel RC357M\Drawings\12517-201-301-AS BUILT.dwg

PLOT DATE: December 23, 2010



PLAN VIEW

NOZZLE SCHEDULE				
MARK	SERVICE	SIZE	RATING	TYPE
1	AIR INLET	12"	150#	RF
2	AIR OUTLET	8"	300#	RF
3	HIGH PRESSURE VENT	6"	150#	RF
4	STARTER VENT	4"	-	PIPE
5	ENGINE INTAKE	12"	-	PIPE
6	EXHAUST	14"	-	PIPE
7	WASTE OIL PUMPOUT	2"	3000#	MNPT
8	WASTE GLYCOL PUMPOUT	2"	3000#	MNPT
9	FUEL GAS SUPPLY	2"	150#	RF
10	INSTRUMENT AIR SUPPLY	1"	3000#	FNPT
11	INSTRUMENT AIR VENT	1"	-	PIPE
12	START GAS SUPPLY	2"	150#	RF
13	ENGINE LUBE OIL FILL	3/4"	-	HOSE
14	GLYCOL FILL	3/4"	-	HOSE
15	WASTE GLYCOL PUMPOUT	3/4"	-	HOSE
16	HYDROCARBON DRAIN	1/2"	3000#	FNPT

GENERAL SPECIFICATIONS	
OVERALL PACKAGE LENGTH	533"
OVERALL PACKAGE WIDTH	232 1/4"
OVERALL PACKAGE HEIGHT (w/STACK)	317 1/2"
OVERALL OPERATING PACKAGE WEIGHT (LBS)	TBD
MAIN SKID SHIPPING WEIGHT (LBS)	109,635
BRIDGE CRANE RATING	5 TON
SEAL PAN	<input checked="" type="checkbox"/> FLAT <input type="checkbox"/> NONE <input type="checkbox"/> SLOPED
LOADING METHOD	<input checked="" type="checkbox"/> LIVE ROLL <input type="checkbox"/> CRANE <input checked="" type="checkbox"/> JACK & ROLL
NOTES:	
1. ALL (Z) DIMENSIONS TAKEN FROM TOP OF SKID.	
2. ALL OTHER NOTES FOUND ON DWG. #LEGEND.	
3. ALL SKID EDGE CONNECTIONS ±1/4" TOLERANCE.	
4. ALL TAIL DIMENSIONS FROM REFERENCE POINT.	
5. SKID DEPTH: 24"	
6. CENTER OF GRAVITY:	
X' FROM REF. POINT: 196.1"	
Y' FROM REF. POINT: -0.6"	
Z' FROM REF. POINT: 62.5"	

**FINAL  
AS BUILT**

NAME *K. WILSON* DATE DEC 21, 2010

PERMIT TO PRACTISE APEGGA PERMIT: No. P8651

TITLE	
PLAN VIEW	
DWG NO	12517-201
SHT	1
REV	5

5	AS BUILT	DEC 21/10	KW	KG
4	NOZZLE 16 ADDED	SEP 17/10	KW	AR
3	NOZZLE CHART REVISED/MOVE CONN. AS PER NOTE	SEP 02/10	KW	AR
2	MUFFLER MOVED/PLATFORM AND DIMS ADDED	AUG 26/10	KW	AR
1	ISSUED FOR CONSTRUCTION	15/06/10	KW	AR
A	ISSUED FOR APPROVAL	15/06/10	KW	AR
REV	DESCRIPTION	DATE	BY	APR

DATE	07/06/10	SCALE	1/2" = 1'-0"
DRAWN BY	<i>K. WILSON</i>	CHECKED BY	<i>A. ROSS</i>
APPROVED BY	<i>A. ROSS</i>	CUST PO	N/A
STEP CODE	N/A		

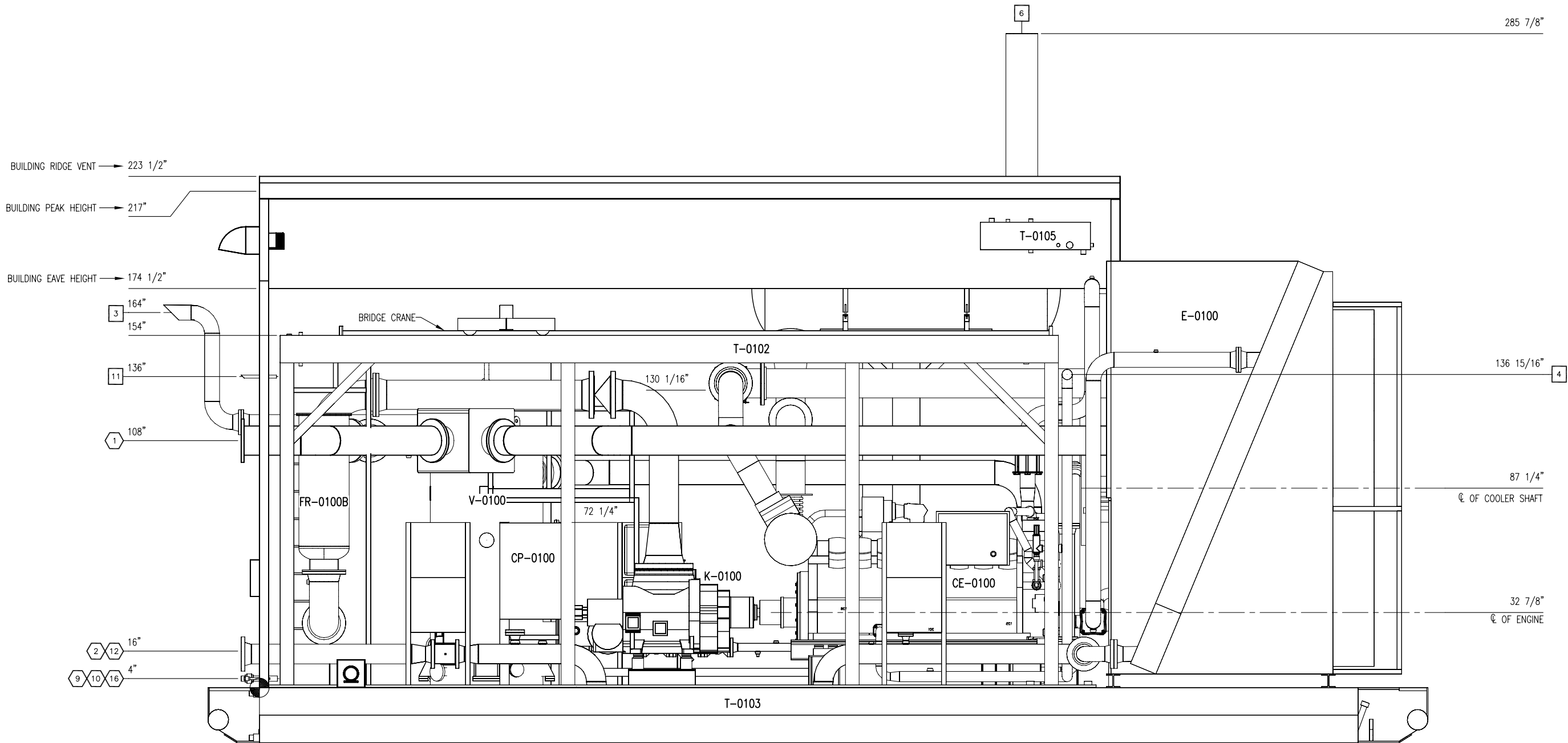
FOR  
HUSKY OIL OPERATIONS  
CATERPILLAR G3516LE-AFR  
ARIEL RC357M

**ENERFLEX**  
10121 - BARLOW TRAIL N.E.  
CALGARY ALBERTA CANADA

THE INFORMATION CONTAINED HEREIN IS THE CONFIDENTIAL PROPERTY OF TOROMONT ENERGY SYSTEMS AND IS NOT FOR PUBLICATION, AND NO PART THEREOF SHALL BE COPIED OR COMMUNICATED TO A THIRD PARTY WITHOUT AUTHORIZATION FROM TOROMONT ENERGY SYSTEMS.

P:\10000 Projects\12517 Husky S1340 G3516LE Arel RG357M\Drawings\12517-201-301-AS BULL.dwg

PLOT DATE: December 23, 2010



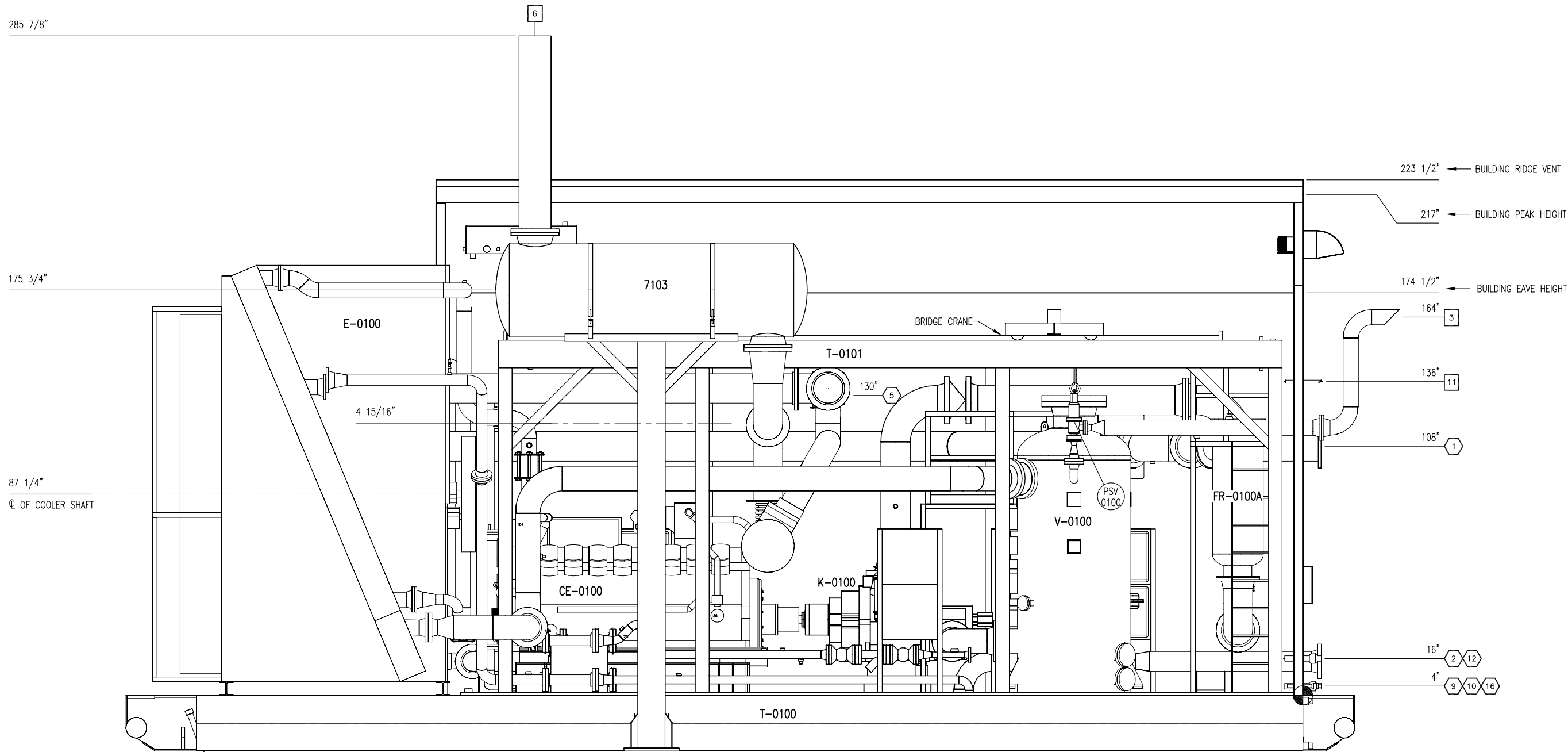
ELEVATION 'A-A'

**FINAL  
AS BUILT**  
NAME *K. WALTON* DATE DEC 21, 2010

4	AS BUILT	DEC 21/10	KW	KG	DATE	07/06/10	SCALE	1/2" = 1'-0"	FOR HUSKY OIL OPERATIONS CATERPILLAR G3516LE-AFRC ARIEL RG357M	<b>ENERFLEX</b> 10121 - BARLOW TRAIL N.E. CALGARY ALBERTA CANADA	TITLE GENERAL ARRANGEMENT ELEVATION A-A				
3	NOZZLE 16 ADDED	SEP 17/10	KW	AR	DRAWN BY	K. WALTON	CHECKED BY	A. ROSS			APPROVED BY	A. ROSS			
2	MUFFLER MOVED/PLATFORM ADDED	AUG 26/10	KW	AR											
1	ISSUED FOR CONSTRUCTION	15/06/10	KW	AR	CUST PO N/A										
A	ISSUED FOR APPROVAL	11/06/10	KW	AR											
REV	DESCRIPTION	DATE	BY	APR	STEP CODE N/A										
										DWG NO	12517-201	SHT	2	REV	4

THE INFORMATION CONTAINED HEREIN IS THE CONFIDENTIAL PROPERTY OF TOROMONT ENERGY SYSTEMS AND IS NOT FOR PUBLICATION, AND NO PART THEREOF SHALL BE COPIED OR COMMUNICATED TO A THIRD PARTY WITHOUT AUTHORIZATION FROM TOROMONT ENERGY SYSTEMS.

P:\10000 Projects\12517 Husky S1340 G3516LE Ariel RG357M\Drawings\12517-201-301-AS BUILT.dwg  
PLOT DATE: December 23, 2010

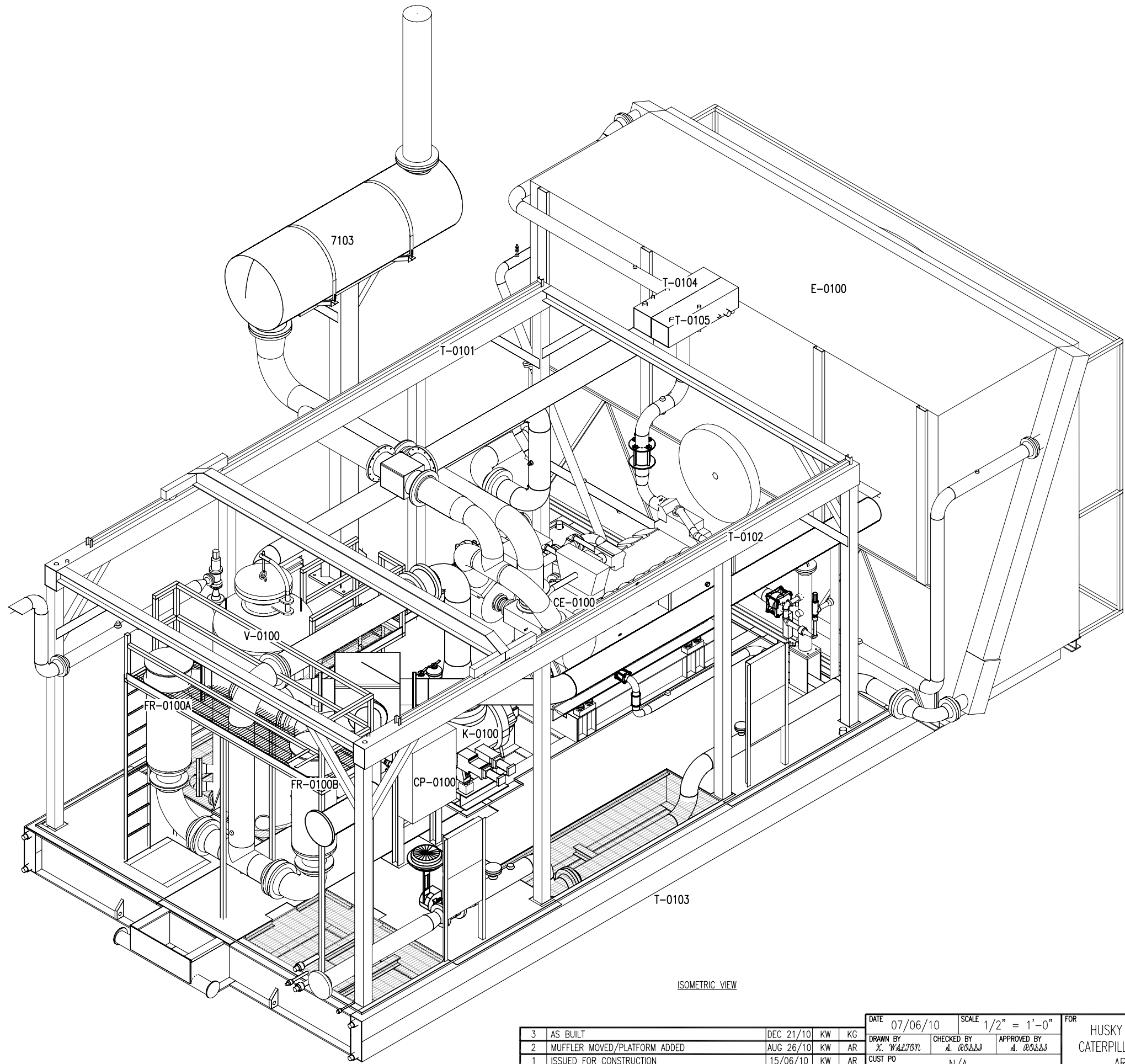


ELEVATION 'B-B'

**FINAL  
AS BUILT**  
NAME *K. WALTON* DATE DEC 21, 2010

					DATE	07/06/10		SCALE	1/2" = 1'-0"		FOR HUSKY OIL OPERATIONS CATERPILLAR G3516LE-AFRC ARIEL RG357M	<b>ENERFLEX</b> 10121 - BARLOW TRAIL N.E. CALGARY ALBERTA CANADA	TITLE GENERAL ARRANGEMENT ELEVATION B-B						
3	AS BUILT				DEC 21/10	KW	KG	DRAWN BY	CHECKED BY	APPROVED BY			CUST PO N/A						
2	MUFFLER MOVED/PLATFORM ADDED				AUG 26/10	KW	AR	K. WALTON	A. ROSS	A. ROSS									
1	ISSUED FOR CONSTRUCTION				15/06/10	KW	AR												
A	ISSUED FOR APPROVAL				11/06/10	KW	AR	STEP CODE N/A					DWG NO	12517-201		SHT	3	REV	3
REV	DESCRIPTION				DATE	BY	APR												

THE INFORMATION CONTAINED HEREIN IS THE CONFIDENTIAL PROPERTY OF TOROMONT ENERGY SYSTEMS AND IS NOT FOR PUBLICATION, AND NO PART THEREOF SHALL BE COPIED OR COMMUNICATED TO A THIRD PARTY WITHOUT AUTHORIZATION FROM TOROMONT ENERGY SYSTEMS.

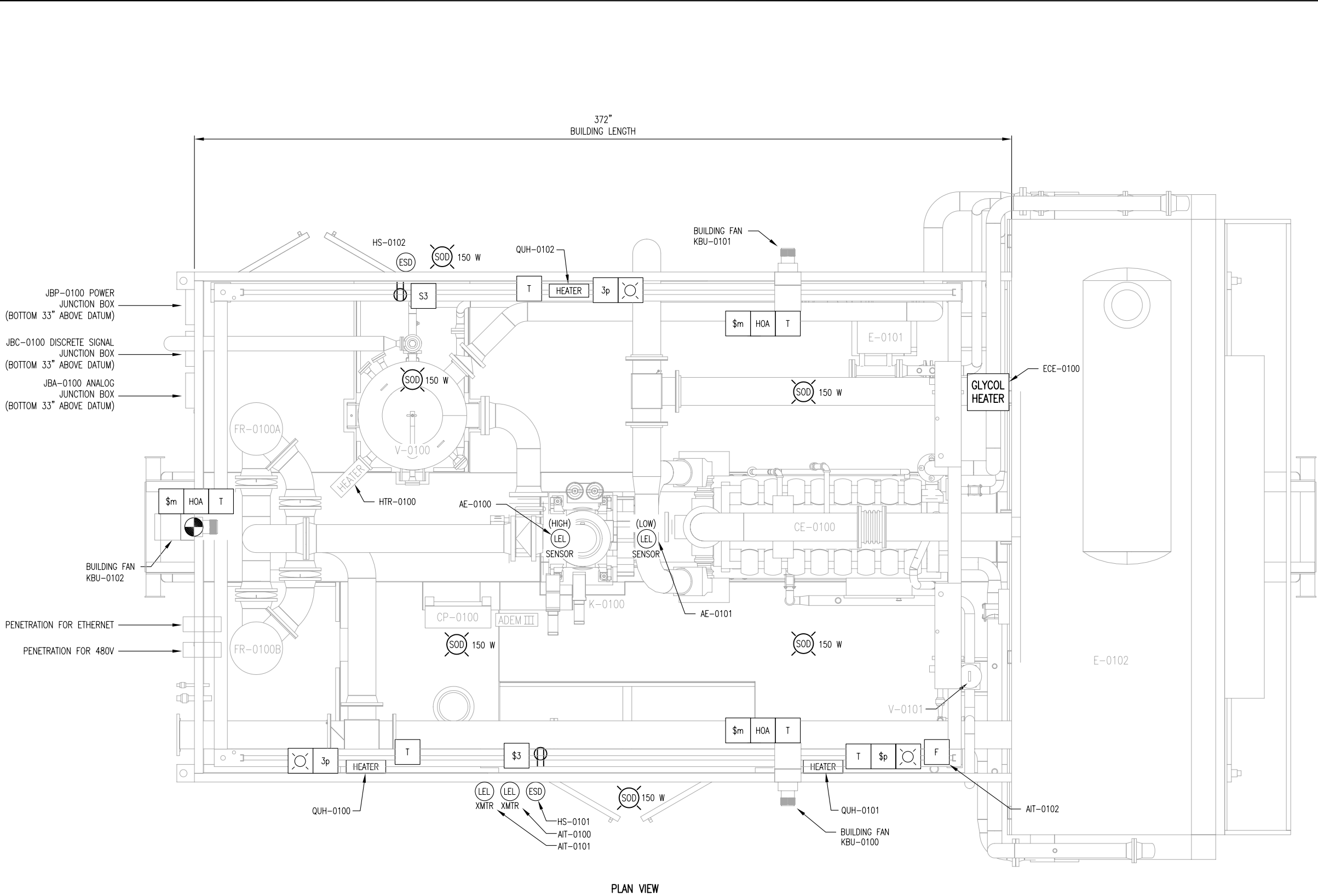


ISOMETRIC VIEW

**FINAL  
AS BUILT**  
NAME *K. WALTON* DATE DEC 21, 2010

					DATE	07/06/10		SCALE	1/2" = 1'-0"		FOR HUSKY OIL OPERATIONS CATERPILLAR G3516LE-AFRC ARIEL RG357M	<b>ENERFLEX</b> 10121 - BARLOW TRAIL N.E. CALGARY ALBERTA CANADA	TITLE GENERAL ARRANGEMENT ISOMETRIC VIEW						
3	AS BUILT				DEC 21/10	KW	KG	DRAWN BY	CHECKED BY	APPROVED BY									
2	MUFFLER MOVED/PLATFORM ADDED				AUG 26/10	KW	AR	K. WALTON	A. ROSS	A. ROSS									
1	ISSUED FOR CONSTRUCTION				15/06/10	KW	AR	CUST PO N/A											
A	ISSUED FOR APPROVAL				11/06/10	KW	AR	STEP CODE N/A					DWG NO	12517-201		SHT	4	REV	3
REV		DESCRIPTION					DATE	BY	APR										

P:\10000 Projects\12517 Husky 51340 G3516LE Ariel RG357M\Drawings\12517-201-301-AS BUIL.dwg  
PLOT DATE: December 23, 2010



PLAN VIEW

NOTES:  
1. DATUM IS FROM TOP OF SKID

ELECTRICAL LEGEND	
SYMBOL	DESCRIPTION
	LIGHT
	INCANDESCENT LIGHT
	H.P. SODIUM LIGHT
	BATTERY POWERED EMERGENCY LIGHT
	RECEPTACLE
	THERMOSTAT
	FIRE EYE
	FIRE PULL STATION
	COMBUSTIBLE LEL GAS ALARM BEACON
	TOXIC GAS H2S ALARM BEACON
	FIRE ALARM STROBE
	ALARM HORN
	CO SENSOR
	COMBUSTIBLE DETECTION
	H2S SENSOR
	HEATER
	TIMER SWITCH
	EMERGENCY SHUT DOWN BUTTON
	-

**FINAL  
AS BUILT**  
NAME K. WALSH DATE 12/21/10

PERMIT TO PRACTISE APEGGA PERMIT: No. P8651

				DATE 07/06/10		SCALE 1/2" = 1'-0"		FOR HUSKY OIL OPERATIONS CATERPILLAR G3516LE-AFRG ARIEL RG357M		<b>ENERFLEX</b> 10121 - BARLOW TRAIL N.E. CALGARY ALBERTA CANADA		TITLE <u>ELECTRICAL LAYOUT</u>		
2	AS BUILT			12/21/10	KW	KG	DRAWN BY K. WALSH		CHECKED BY A. ROSS		APPROVED BY A. ROSS			
1	ISSUED FOR CONSTRUCTION			OCT 29/10	KW	AR	CUST PO N/A							
A	ISSUED FOR APPROVAL			11/06/10	KW	AR	STEP CODE N/A				DWG NO 12517-201		SHT 5	REV 2
REV	DESCRIPTION			DATE	BY	APR								

**ENERFLEX**  
10121 - BARLOW TRAIL N.E.  
CALGARY ALBERTA CANADA

TITLE  
ELECTRICAL LAYOUT

THE INFORMATION CONTAINED HEREIN IS THE CONFIDENTIAL PROPERTY OF TOROMONT ENERGY SYSTEMS AND IS NOT FOR PUBLICATION, AND NO PART THEREOF SHALL BE COPIED OR COMMUNICATED TO A THIRD PARTY WITHOUT AUTHORIZATION FROM TOROMONT ENERGY SYSTEMS.