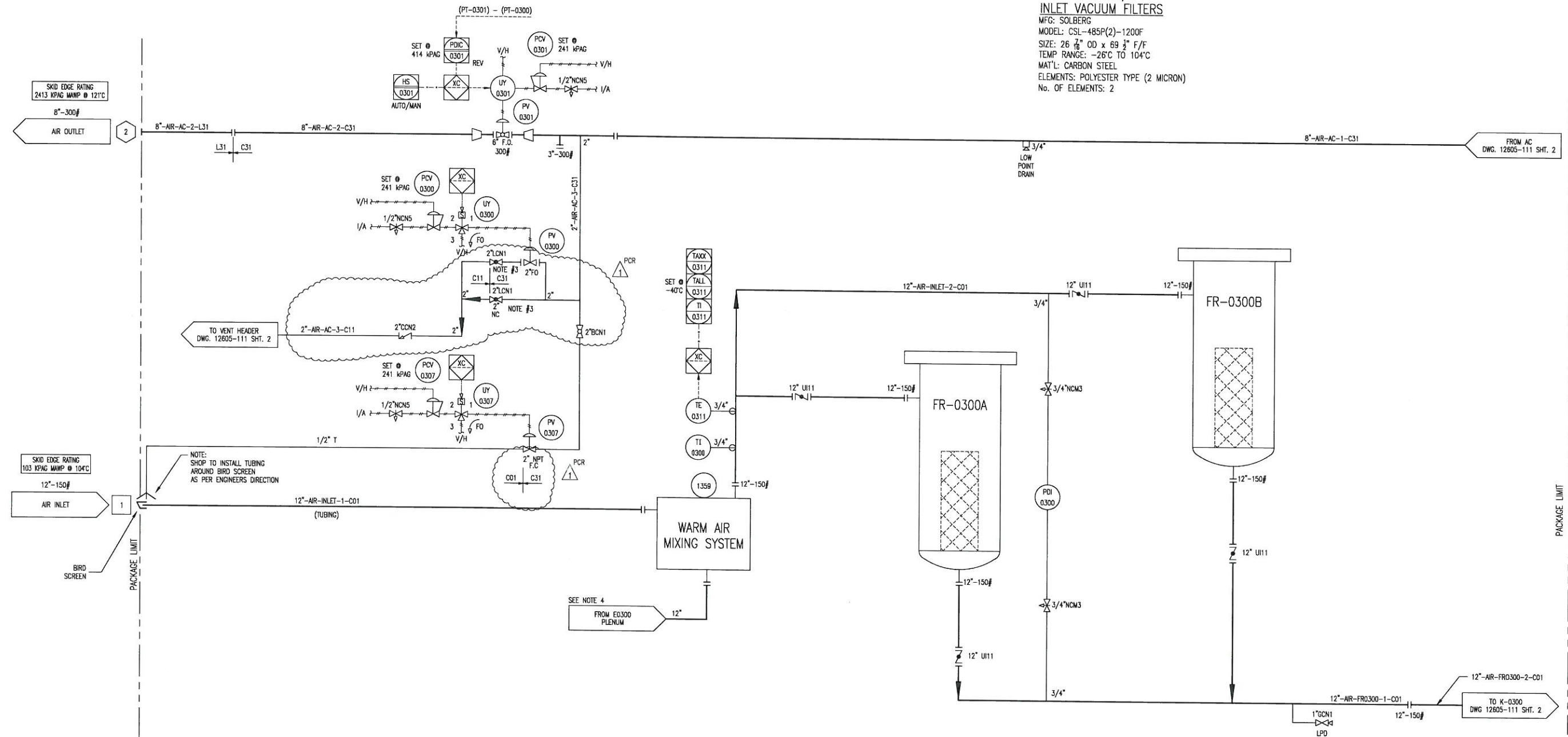
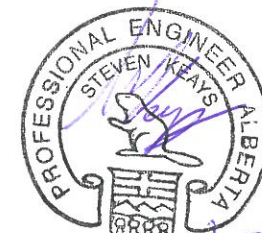


FLOW DIAGRAM	FLOW REV.	ENERFLEX LINE NUMBER	SPOOL SHEET #	SERVICE	SIZE (in.)	FROM	TO	PIPE SPEC	WALL THICKNESS (SCHEDULE)	DESIGN PRESSURE (kPag)	DESIGN TEMP. (°C)	CORROSION ALLOWANCE (mm.)	TEST PRESSURE (kPag)	X-RAY (%)	NOTES	PIPE MATERIAL	FLANGE MATERIAL	CODE	PWHT
12605-111-1	1	12"-AIR-INLET-1-C01	1	AIR	12"	SKID EDGE CONNECTION 1 AIR INLET / E-0300 COOLER PLENUM	WARM AIR MIXING BOX 1359	C01	STD	103	-29/121	1.6	-	-	4	SA-106-B	SA-105	-	NO
12605-111-1	1	12"-AIR-INLET-2-C01	2	AIR	12"	WARM AIR MIXING BOX 1359	VACUUM FILTERS FR-0300A/B	C01	STD	103	-29/121	1.6	-	-	4	SA-106-B	SA-105	-	NO
12605-111-1	1	12"-AIR-FR0300-1-C01	3	AIR	12"	VACUUM FILTERS FR-0300A/B	12"-AIR-FR0300-2-C01	C01	STD	103	-29/121	1.6	-	-	4	SA-106-B	SA-105	-	NO
12605-111-1/2	1/2	12"-AIR-FR0300-2-C01	4	AIR	12"	12"-AIR-FR0300-1-C01	12"-AIR-FR0300-1-C31	C01	STD	103	-29/121	1.6	-	-	4	SA-106-B	SA-105	-	NO
12605-111-2	2	12"-AIR-FR0300-1-C31	4	AIR	12" / 16"	12"-AIR-FR0300-2-C01	SCREW COMPRESSOR K-0300	C31	STD	2068	-29/121	1.6	3351	10%	1, 3	SA-106-B	SA-105	B31.3 2010	NO
12605-111-2	2	10"-AIR-K0300-1-C31	5	AIR	10"	SCREW COMPRESSOR K-0300	OIL SEPARATOR V-0300	C31	STD	2068	-29/121	1.6	3351	10%	1, 3	SA-106-B	SA-105	B31.3 2010	NO
12605-111-2	2	10"-AIR-V0300-1-C31	6	AIR	10"	OIL SEPARATOR V-0300	10"-AIR-V0300-1-L31	C31	STD	2068	-29/121	1.6	3351	10%	1, 3	SA-106-B	SA-105	B31.3 2010	NO
12605-111-2	2	10"-AIR-V0300-1-L31	6	AIR	6" / 10"	10"-AIR-V0300-1-C31	AFTERCOOLER E-0300	L31	STD	2068	-45/121	1.6	3351	10%	1, 3	SA-333 GR.6	SA-350-LF2	B31.3 2010	NO
12605-111-2	2	8"-AIR-AC-1-L31	7	AIR	6" / 8"	AFTERCOOLER E-0300	8"-AIR-AC-1-C31	L31	STD	2068	-45/121	1.6	3351	10%	1, 3	SA-333 GR.6	SA-350-LF2	B31.3 2010	NO
12605-111-1/2	1/2	8"-AIR-AC-1-C31	7	AIR	2" / 8"	8"-AIR-AC-1-L31	8"-AIR-AC-2-C31	C31	STD	2068	-29/121	1.6	3351	10%	1, 3	SA-106-B	SA-105	B31.3 2010	NO
12605-111-1	1	8"-AIR-AC-2-C31	8	AIR	3" / 6" / 8"	8"-AIR-AC-1-C31	8"-AIR-AC-2-L31 / 2"-AIR-AC-3-C31	C31	STD	2068	-29/121	1.6	3351	10%	1, 3	SA-106-B	SA-105	B31.3 2010	NO
12605-111-1	1	8"-AIR-AC-2-L31	8	AIR	8"	8"-AIR-AC-2-C31	SKID EDGE CONNECTION 2 AIR OUTLET	L31	STD	2068	-45/121	1.6	3351	10%	1, 3	SA-333 GR.6	SA-350-LF2	B31.3 2010	NO
12605-111-1	1	2"-AIR-AC-3-C31	-	AIR	2"	8"-AIR-AC-2-C31	2"-AIR-AC-3-C11 / PV-0307	C31	XS	2068	-29/121	1.6	2275	-	2	SA-106-B	SA-105	B31.3 2010	NO
12605-111-1/2	1/2	2"-AIR-AC-3-C11	-	AIR	1.5" / 2"	2"-AIR-AC-3-C31	6"-AIR-V0300-3-C11	C11	XS	1670	-29/121	1.6	1837	-	2	SA-106-B	SA-105	B31.3 2010	NO
12605-111-2 / 12605-113-1	2/0	3"-L-V0300-2-C31	9	OIL	3" / 4"	OIL SEPARATOR V-0300	OIL COOLER E-0301 / TCV-0300	C31	STD	2068	-29/121	1.6	3351	10%	1, 3	SA-106-B	SA-105	B31.3 2010	NO
12605-113-1	0	4"-L-E0301-1-C31	10	OIL	3" / 4"	OIL COOLER E-0301	TCV-0300	C31	STD	2068	-29/121	1.6	3351	10%	1, 3	SA-106-B	SA-105	B31.3 2010	NO
12605-113-1	0	3"-L-E0301-2-C31	11	OIL	2" / 3"	TCV-0300	VARIOUS CONNECTIONS	C31	STD	2068	-29/121	1.6	3351	10%	1, 3	SA-106-B	SA-105	B31.3 2010	NO
12605-111-2	2	3"-AIR-V0300-3-C31	16	AIR	1.5" / 3"	OIL SEPARATOR V-0300	6"-AIR-V0300-3-C11	C31	XS / STD	2068	-29/121	1.6	3351	10%	1, 3	SA-106-B	SA-105	B31.3 2010	NO
12605-111-2	2	6"-AIR-V0300-3-C11	16	AIR	2" / 6"	3"-AIR-V0300-3-C31 / 2"-AIR-AC-3-C11	6"-AIR-V0300-3-C01	C11	STD	1689	-29/121	1.6	2737	10%	1, 3	SA-106-B	SA-105	B31.3 2010	NO
12605-111-2	2	6"-AIR-V0300-3-C01	16	AIR	6"	6"-AIR-V0300-3-C11	VENT HEADER	C01	STD	103	-29/121	1.6	-	-	4	SA-106-B	SA-105	B31.3 2010	NO
12605-115-1	1	2"-HG-SUPPLY-1-C11	-	START GAS	1.5" / 2"	SKID EDGE CONNECTION 12 STARTER GAS SUPPLY	ENGINE STARTER 5301	C11	XS	1034	-29/121	1.6	1137	-	2	SA-106-B	SA-105	B31.3 2010	NO
12605-115-1	1	4"-HG-STARTER-1-C11	-	START GAS	4"	ENGINE STARTER 5301	SKID EDGE CONNECTION 4 STARTER VENT	C11	STD	1034	-29/121	1.6	1137	-	2	SA-106-B	SA-105	B31.3 2010	NO
12605-115-1	1	2"-F-SUPPLY-1-C11	-	FUEL GAS	1.5" / 2"	SKID EDGE CONNECTION 9 FUEL GAS SUPPLY	FUEL GAS SCRUBBER V-0301	C11	XS	1034	-29/121	1.6	1137	-	2	SA-106-B	SA-105	B31.3 2010	NO
12605-115-1	1	2"-F-V0301-1-C11	-	FUEL GAS	1.5" / 2"	FUEL GAS SCRUBBER V-0301	QUH-0301 / QUH-0301 / QUH-0302 / ENGINE CE-0300	C11	XS	1034	-29/121	1.6	1137	-	2	SA-106-B	SA-105	B31.3 2010	NO
12605-115-1	1	1"-IA-SUPPLY-1-C11	-	INSTRUMENT AIR	1"	SKID EDGE CONNECTION 10 INSTRUMENT AIR SUPPLY	VARIOUS INSTRUMENTS	C11	XS	1034	-29/121	1.6	1137	-	2	SA-106-B	SA-105	B31.3 2010	NO
NOTE 1: TEST MEDIUM TO BE H ₂ O - MINIMUM DURATION 10 MINUTES																			

FR-0300A/B
INLET VACUUM FILTERS
MFG: SOLBERG
MODEL: CSL-485P(2)-1200F
SIZE: 26 7/8" OD x 69 1/2" F/F
TEMP RANGE: -26°C TO 104°C
MAT'L: CARBON STEEL
ELEMENTS: POLYESTER TYPE (2 MICRON)
No. OF ELEMENTS: 2



- NOTES:
1. SEE DRAWING 099 FOR GENERAL NOTES & PROJECT OVERVIEW.
 2. SEE DRAWING 199 FOR P&ID SYMBOL LEGEND.
 3. THROTTLE VALVE TO CONTROL BLOWDOWN RATE & AVOID COMPRESSOR OIL LOSS.
 4. TAKE WARM AIR FROM BOTTOM OF COOLER PLENUM.



**MTR's REQUIRED
ON ALL
PRESSURE RETAINING
PIPE & FITTINGS**

**ISSUED FOR
CONSTRUCTION**
NAME: G. MACLEAN DATE: MAY 04/12

NO SWAK ALLOWED

				DATE	04/12/12	SCALE	NTS
				DRAWN BY	G. MACLEAN	CHECKED BY	J. LIN
				PROJECT MANAGER	S. PRITCHARD	APPROVED BY	S. PRITCHARD
				CUST PO		PROJECT ENGINEER	J. LIN
1	REVISED BLOWDOWN, CUSTOMER REQUEST	07/30/12	SE	JL			
0	ISSUED FOR CONSTRUCTION	05/04/12	GM	JL			
REV	DESCRIPTION	DATE	BY	APR			
				APEGA PERMIT No:	P8651	STEP CODE	490 511 591
				WORK ORDER	12605		
				HUSKY OIL OPERATIONS CATERPILLAR G3516LE-AFRC ARIEL RG357M			
				ENERFLEX Calgary, Alberta, Canada			
				P & I DIAGRAM PROCESS GAS STAGE #1			
				DWG NO	12605-111	SHT	1
						REV	1

K-0300
SCREW GAS COMPRESSOR FRAME

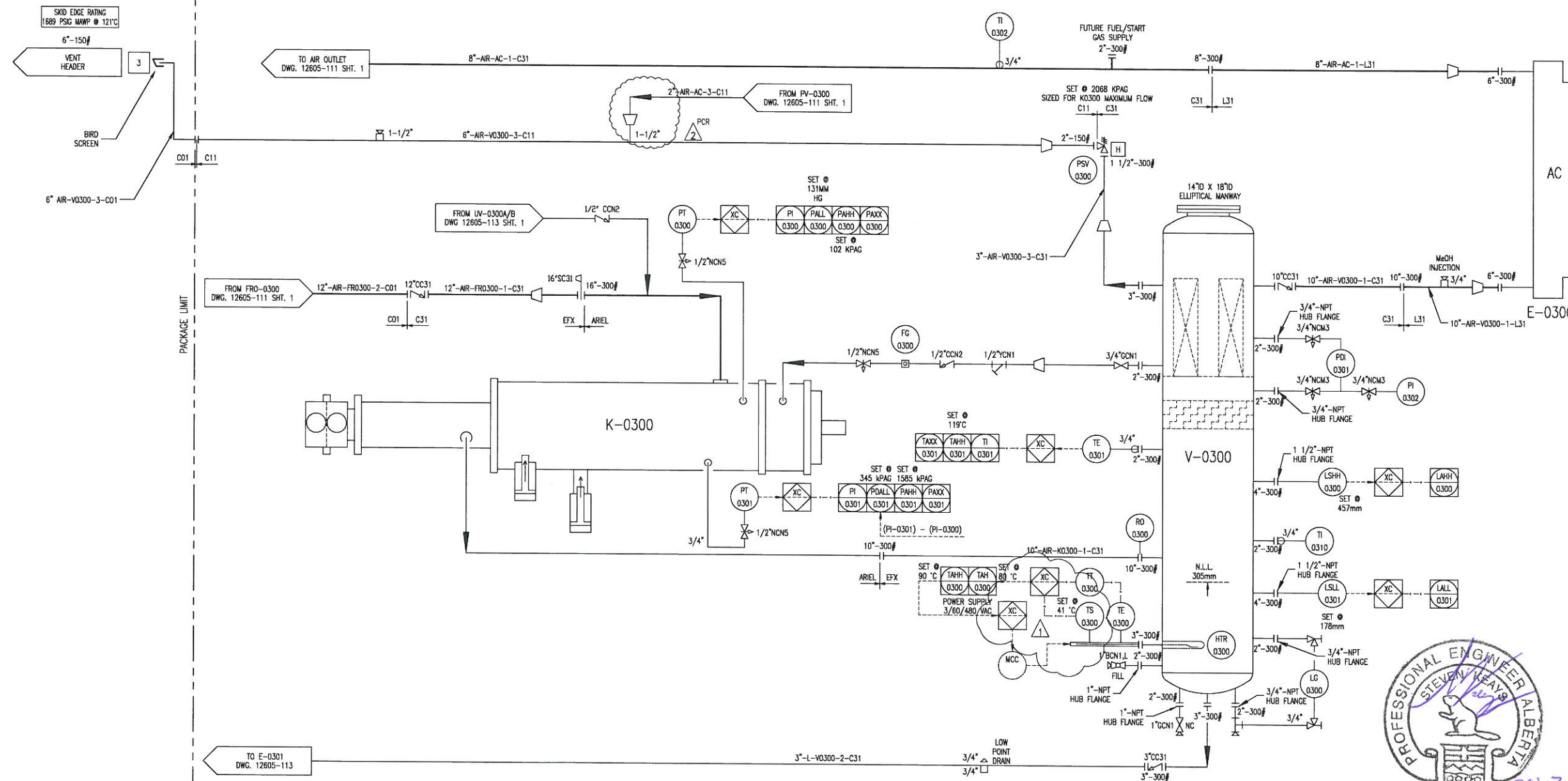
MFG: ARIEL
MODEL: RG357M
OPERATING: 2489 RPM

V-0300
OIL SEPARATOR

MFG: EFX
SIZE: 1219mm x 2591mm S/S
MAWP: 2413 kPAG @ 121°C
MDMT: -29°C @ 2413 kPAG
CA: 1.6mm
MAT'L: SA-516-70
ELEMENTS: (7) J05-5000-V
EFFICIENCY: 0.3 MICRONS

AC (E-0300)
COOLER SECTION

MFG: AIR-X-CHANGERS
MODEL: 156EH-122-24
MAWP: 2413 kPAG @ 149°C
MDMT: -45°C @ 2413 kPAG



**MTR's REQUIRED
ON ALL
PRESSURE RETAINING
PIPE & FITTINGS**

**ISSUED FOR
CONSTRUCTION**
NAME: G. MACLEAN DATE: MAY 04/12

NO SWAK ALLOWED

						DATE	04/12/12	SCALE	NTS	HUSKY OIL OPERATIONS CATERPILLAR G3516LE-AFRG ARIEL RG357M	ENERFLEX Calgary, Alberta, Canada	P & I DIAGRAM PROCESS GAS STAGE #2					
						DRAWN BY	G.MACLEAN	CHECKED BY	J.LIN				APPROVED BY	S.PRITCHARD			
						PROJECT MANAGER	S.PRITCHARD	PROJECT ENGINEER	J.LIN								
						CUST PO											
2	REVISED BLOWDOWN, CUSTOMER REQUEST	07/30/12	SE	JL													
1	RE-ISSUED FOR CONSTRUCTION	06/12/12	SE	JL													
0	ISSUED FOR CONSTRUCTION	05/04/12	GM	JL													
REV	DESCRIPTION	DATE	BY	APR		APEGA PERMIT No:	P8651	STEP CODE	490 511 591	WORK ORDER	12605	DWG NO	12605-111	SHT	2	REV	2

HUSKY OIL OPERATIONS
CATERPILLAR G3516LE-AFRC
ARIEL RG357M

ENERFLEX
Calgary, Alberta,
Canada

P & I DIAGRAM
PROCESS GAS
STAGE #2

DWG NO 12605-111 SHT 2 REV 2

THE INFORMATION CONTAINED HEREIN IS THE CONFIDENTIAL PROPERTY OF ENERFLEX, LTD. AND IS NOT FOR PUBLICATION, AND NO PART THEREOF SHALL BE COPIED OR COMMUNICATED TO A THIRD PARTY WITHOUT AUTHORIZATION FROM ENERFLEX, LTD.

P-0300
COMPRESSOR LUBE OIL PUMP
MFG: ARIEL (INTEGRAL)
MODEL: P755x3.00
FLOW RATE: 88.4 GPM

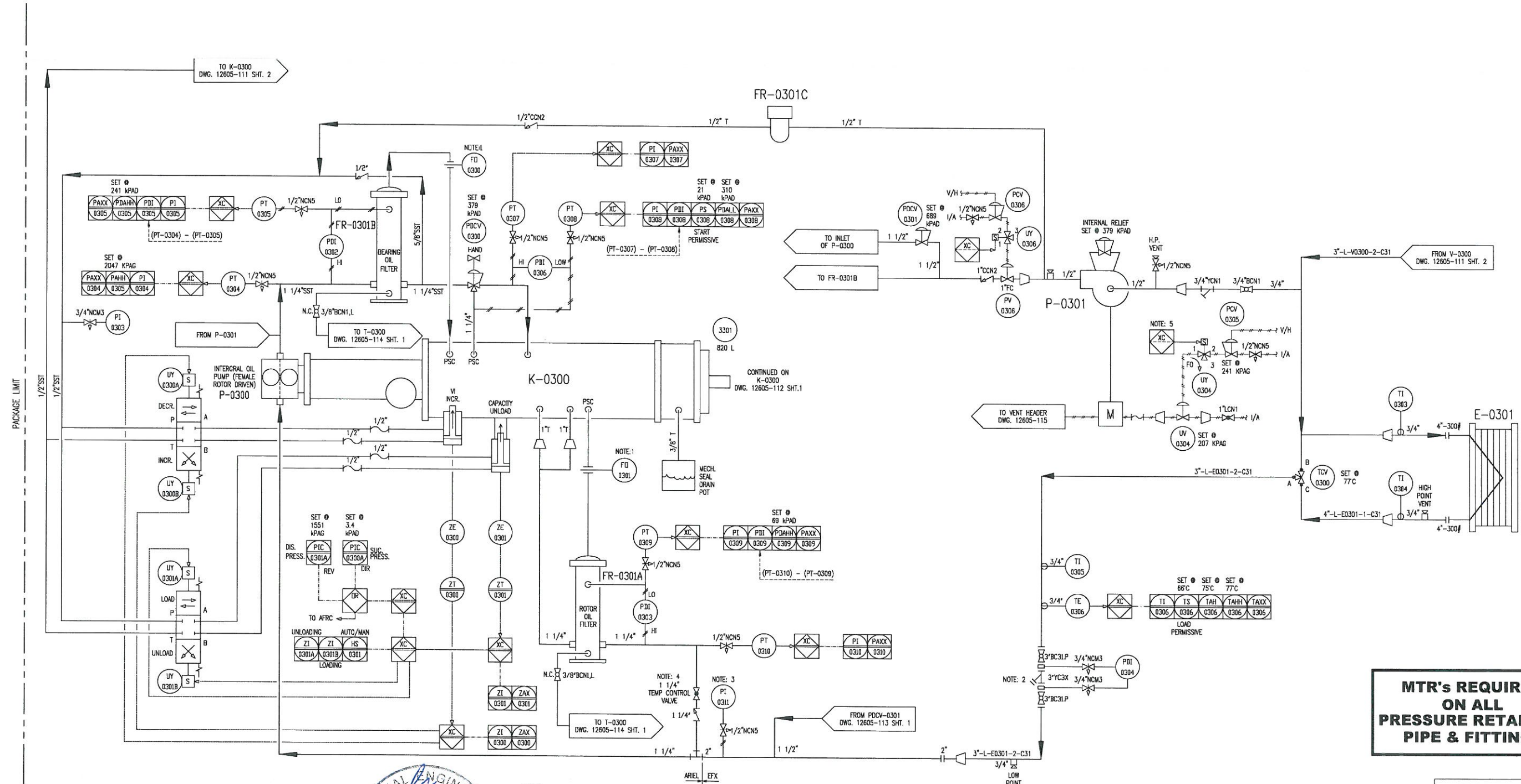
FR-0301B
COMPRESSOR BEARING OIL FILTER
MFG: ARIEL
PARTICLE RATING: 6 MICRON

FR-0301A
COMPRESSOR ROTOR OIL FILTER
MFG: ARIEL
PARTICLE RATING: 16 MICRON

FR-0301C
COMPRESSOR PRELUBE OIL FILTER
MFG: PARKER
PARTICLE RATING: 5-7 MICRON

P-0301
COMPRESSOR OIL PRELUBE PUMP
MFG: TUTHILL
MODEL: 4105V-L-7
MAWP: 1724 KPAG
FLOW: 18 LPM
DRIVER: AIR MOTOR

E-0301
COMPRESSOR OIL COOLER
MFG: GEA
MODEL: FPA10X20-360M
CHANNELS: 90
MAWP - OIL SIDE: 2413 KPAG @ 177°C
MAWP - GLYCOL SIDE: 2413 KPAG @ 177°C



**MTR's REQUIRED
ON ALL
PRESSURE RETAINING
PIPE & FITTINGS**

**ISSUED FOR
CONSTRUCTION**
NAME: G.MACLEAN DATE: MAY 04/12



NO SWAK ALLOWED

- NOTES:
1. ORIFICE SUPPLIED WITH COMPRESSOR.
 2. 40 MESH MINIMUM.
 3. MOUNT PI-0111 REMOTELY.
 4. VALVE IS NORMALLY OPEN; THROTTLE TO ADJUST ROTOR OIL TEMP
 5. PRE-LUBE ONLY REQUIRED ON FIRST START ATTEMPT

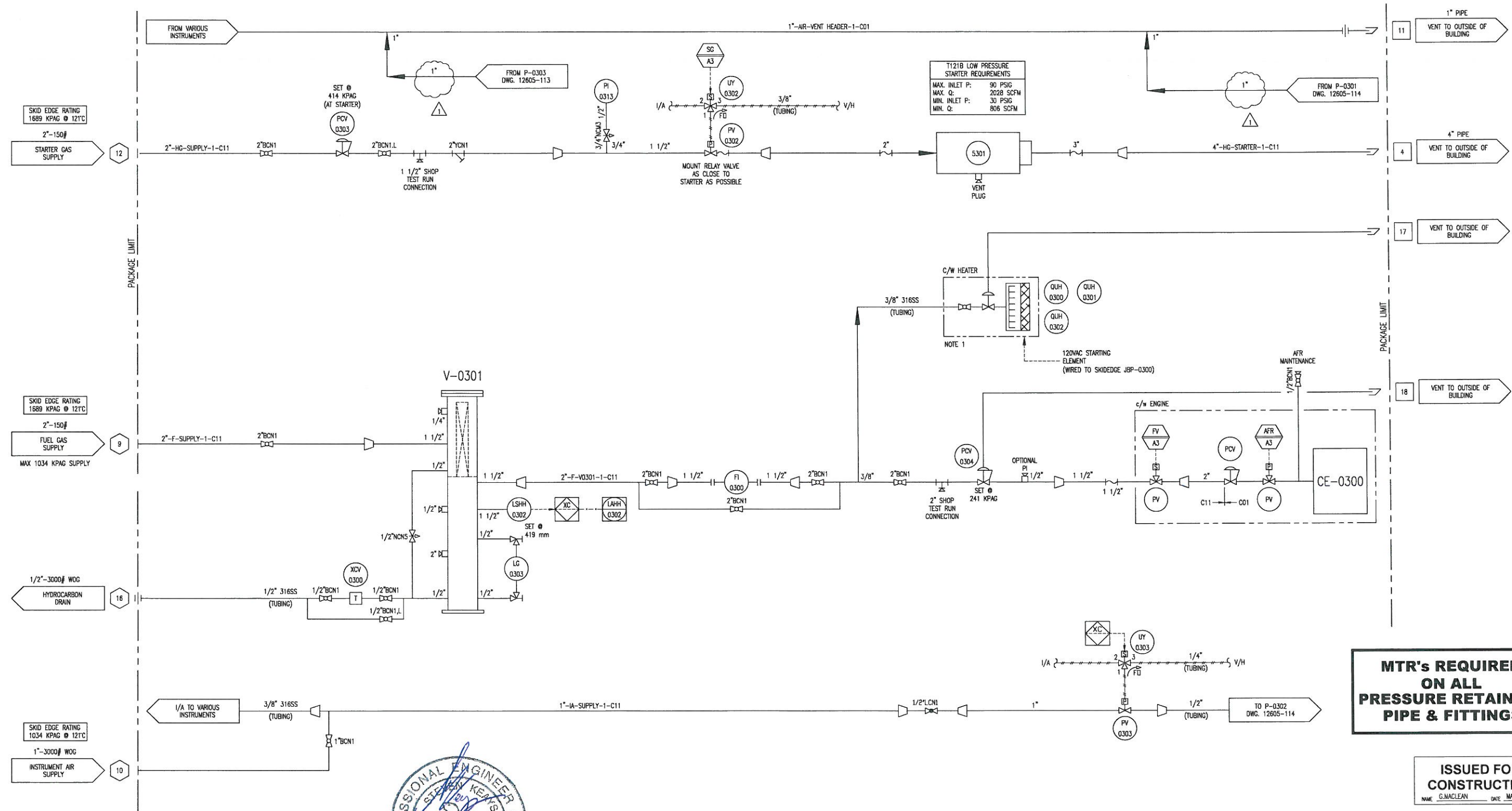
				DATE	04/12/12	SCALE	NTS
				DRAWN BY	G.MACLEAN	CHECKED BY	J.LIN
				PROJECT MANAGER	S.PRITCHARD	PROJECT ENGINEER	J.LIN
				CUST PO			
0	ISSUED FOR CONSTRUCTION	05/04/12	GM	JL			
REV	DESCRIPTION	DATE	BY	APR			
				APEGA PERMIT No:	P8651	STEP CODE	511 591
				WORK ORDER	12605		
				HUSKY OIL OPERATIONS CATERPILLAR G3516LE-AFRC ARIEL RC357M			
				ENERFLEX Calgary, Alberta, Canada			
				P & I DIAGRAM COMPRESSOR LUBE OIL & UTILITIES			
				DWG NO	12605-113	SHT	1
				REV	0		

V-0301
FUEL GAS SCRUBBER

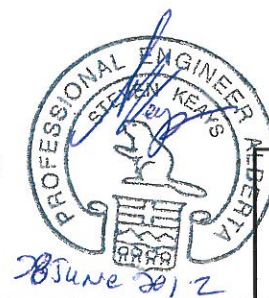
MFG: EFX 6" d
MAWP: 1965 KPAG @ 38°C
ELEMENT: PECO PCHG-36

QUH-0300/0301/0302
BUILDING HEATER

MFG: CATADYNE
MODEL: MK11 24X48
32 KBTU/HR, 120 VAC
C/W GUARD AND HOOD



NOTES:
1. DO NOT LOCATE IN FRONT/BELOW WINDOW.



NO SWAK ALLOWED

**MTR's REQUIRED
ON ALL
PRESSURE RETAINING
PIPE & FITTINGS**

**ISSUED FOR
CONSTRUCTION**
NAME: G.MACLEAN DATE: MAY 04/12

DATE: 04/12/12 SCALE: NTS DRAWN BY: G.MACLEAN CHECKED BY: J.LIN APPROVED BY: S.PRITCHARD PROJECT MANAGER: S.PRITCHARD PROJECT ENGINEER: J.LIN CUST PO:				HUSKY OIL OPERATIONS CATERPILLAR G3516LE-AFRC ARIEL RG357M		ENERFLEX Calgary, Alberta, Canada		P & I DIAGRAM START / FUEL GAS SUPPLY	
1	REISSUED FOR CONSTRUCTION		GM	JL					
0	ISSUED FOR CONSTRUCTION	05/04/12	GM	JL					
REV	DESCRIPTION	DATE	BY	APR	APEGGA PERMIT No: P8651	STEP CODE 511 591	WORK ORDER 12605	DWG NO 12605-115	SHT 1 REV 1

THE INFORMATION CONTAINED HEREIN IS THE CONFIDENTIAL PROPERTY OF ENERFLEX, LTD. AND IS NOT FOR PUBLICATION, AND NO PART THEREOF SHALL BE COPIED OR COMMUNICATED TO A THIRD PARTY WITHOUT AUTHORIZATION FROM ENERFLEX, LTD.

PLOT DATE Sep 12, 2012, gmmocdon F:\10000 Projects\12605 Husky Oil - McMullen TCP - Air Compressor G3516LE RG357M\4. Drafting\RAD\12605-111-JS-Built.dwg

PROJECT DESCRIPTION

ONE (1) AIR COMPRESSOR PACKAGE
FOR: HUSKY OIL OPERATIONS LTD.
LOCATION NAME: MCMULLEN THERMAL CONDUCTION
PILOT (TCP) PROJECT LSD: 03-35-078-25 W4

FABRICATED BY:

ENERFLEX LTD
CALGARY, ALBERTA, CANADA

TANK CAPACITIES

GLYCOL (EJW) SURGE TANK: 103L
GLYCOL (AJW) SURGE TANK: 103L
WASTE OIL STORAGE TANK: 1281L
COMP/ENGINE OIL DAYTANK: 2 X 480L
WASTE GLYCOL STORAGE TANK: 1281L

EQUIPMENT LIST

TAG NO.	DESCRIPTION
FR-0300A/B	INLET VACUUM FILTERS
V-0300	OIL SEPARATOR
E-0300	AC COOLER
CE-0300	ENGINE
K-0300	SCREW COMPRESSOR FRAME
CP-0300	CONTROL PANEL
E-0300	AC/EJW/AJW COOLER
E-0301	COMP. OIL COOLER
FR-0301A/B	COMP. LUBE OIL FILTERS
P-0301	ENGINE PRE-LUBE OIL PUMP
T-0300	WASTE OIL TANK
T-0301	ENGINE OIL DAYTANK
T-0302	COMP OR ENGINE OIL DAYTANK
V-0301	FUEL GAS SCRUBBER
T-0303	WASTE GLYCOL TANK
T-0304	GLYCOL (EJW) SURGE TANK
T-0305	GLYCOL (AJW) SURGE TANK
E-0300	EJW COOLER
E-0300	AJW COOLER

POWER REQUIREMENTS

ENGINE IGNITION SYSTEM: VOL: 24 VDC
CONTROL PANEL: VOL: 24 VDC
LEL & FIRE DETECTION: VOL: 24 VDC
LIGHTS: VOL: 120 VAC
BUILDING FANS: VOL: 120 VAC
KIM HOT START: VOL: 480 VAC
BUILDING HEATERS: VOL: 120 VAC
IMMERSION HEATER: VOL: 480 VAC

SYSTEM CONSUMABLES

COMPRESSOR LUBE OIL: S9-68, 776 L
ENGINE LUBE OIL: SAE 40, LOW ASH, 810 L
GLYCOL: 50% ETHYLENE INHIBITED GLYCOL/WATER SOLUTION
IN ENGINE & AUXILIARY JACKED WATER SYSTEMS
AJW & EJW CAPACITY: 1490 L

DESIGN SPECIFICATION:

ENERFLEX LTD. SCOPE OF SUPPLY ON THIS PROJECT CONSISTS OF ONE
SKIDDED AIR COMPRESSOR PACKAGE.

PACKAGE CONSISTS OF ONE (1) CATERPILLAR G3516LE-AFRC ENGINE DRIVING
AN ARIEL RG357M, AIR COMPRESSOR.

PRIMER: -TPS-SP-001, FIN-1, RED OXIDE
PAINT: -TPS-SP-001, FIN-1, WARM GRAY
PROCESS PIPING: -10% RADIOGRAPHIC TESTING
-10% MT ON FILLET WELDS
-1.6MM CORROSION ALLOWANCE
-NO PWHT
-SSPC-SP3
-NO PICKLING
-NDE TO CGSB
-MTR's REQUIRED
VESSELS: -10% RADIOGRAPHIC TESTING
-10% MT ON FILLET WELDS
-NO PWHT
-SSPC-SP3
-NO PICKLING
-1.6MM CORROSION ALLOWANCE
-NDE TO CGSB
-MTR's REQUIRED

DESIGN CRITERIA & APPLICABLE CODES

SITE ELEVATION: 575 M ABOVE MEAN SEA LEVEL
BAROMETRIC PRESSURE: 94.53 KPAA
AMBIENT TEMPERATURE: MAXIMUM 40°C
MINIMUM -45°C
PROCESS INLET: DESIGN ATM @ AMBIENT
PROCESS FINAL DISCHARGE: DESIGN 2413 KPAG @ 121°C
INSTRUMENT AIR: MINIMUM PRESSURE 241 KPAG
MAXIMUM PRESSURE 1034 KPAG
QUALITY FILTERED/DRY, 10°C MAXIMUM DEW POINT
CODE PIPING B31.3 - LATEST EDITION
NON-CODE PIPING EFX C01, 1mm CA
VESSEL ASME SECTION VIII
EXCHANGER ASME SECTION VIII
STRUCTURAL AWS D1.1
ELECTRICAL CEC
REGISTRATION: VESSEL CRN (AB, BC, SASK)
MISCELLANEOUS: GASKETS CG TYPE, SPIRAL WOUND, GRAPHITE FILLED, 316SS
PROCESS PIPE CARBON STEEL
UTILITY PIPE CARBON STEEL
FLANGES RAISED FACE (UNLESS OTHERWISE NOTED)
THREAD SEALANT JETLUBE. NO SWAK ALLOWED
MTR's REQUIRED
TUBING & FITTINGS: PROCESS TUBING - 316(SS) SMLS / 3/8" MIN. DIA.
(SPE-010-TUB) FITTINGS - 316(SS)
FERRULES - 316(SS) BACK / 316(SS) FRONT
UTILITY TUBING - 304(SS)/ 3/8" MIN. DIA.
FITTINGS - ZINC PLATED CS
FERRULES - 316(SS) BACK / CS FRONT
ELECTRICAL: RIGID ALUMINUM CONDUIT
SUITABLE FOR USE IN: CLASS 1, ZONE 2, GROUP D

ISSUED FOR
CONSTRUCTION

NAME G.MACLEAN DATE MAY 04/12

							DATE 04/12/12	SCALE NTS	HUSKY OIL OPERATIONS CATERPILLAR G3516LE-AFRC ARIEL RG357M	ENERFLEX Calgary, Alberta, Canada	P & I DIAGRAM PROJECT DESCRIPTION & OVERVIEW			
						DRAWN BY G.MACLEAN	CHECKED BY J.LIN	APPROVED BY S.PRITCHARD						
						PROJECT MANAGER S.PRITCHARD	PROJECT ENGINEER J.LIN							
						CUST PO								
0	ISSUED FOR CONSTRUCTION					05/04/12	GM	JL						
REV	DESCRIPTION					DATE	BY	APR	APEGA PERMIT No: P8651	STEP CODE N/A	WORK ORDER 12605	DWG NO 12605-099	SHT 1	REV 0

THE INFORMATION CONTAINED HEREIN IS THE CONFIDENTIAL PROPERTY OF ENERFLEX LTD, AND IS NOT FOR PUBLICATION, AND NO PART THEREOF SHALL BE COPIED OR COMMUNICATED TO A THIRD PARTY WITHOUT AUTHORIZATION FROM ENERFLEX LTD.

PLOT DATE Sep 12, 2012, gmacdon F:\10000 Projects\12605 Husky Oil - McMillen TCF - Air Compressor G3516LE RG357M\4. Drafting\PRD\12605-111-AS-BUILD.dwg

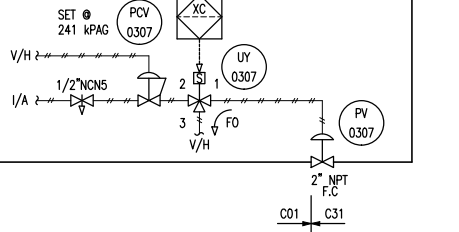
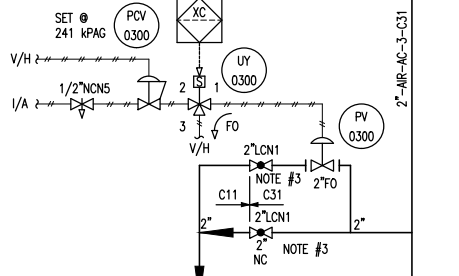
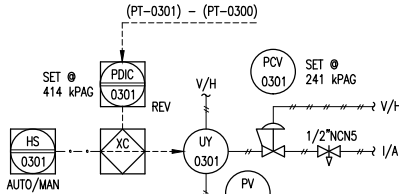
SKID EDGE RATING
2413 KPAG MAMP @ 121°C
8"-300#
AIR OUTLET

SKID EDGE RATING
103 KPAG MAMP @ 104°C
12"-150#
AIR INLET

BIRD
SCREEN

PACKAGE LIMIT

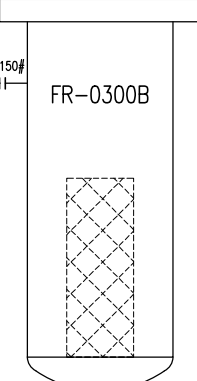
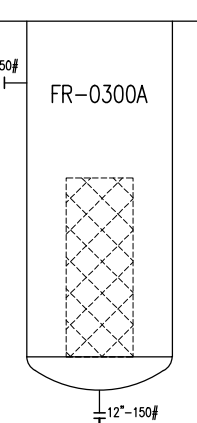
NOTE:
SHOP TO INSTALL TUBING
AROUND BIRD SCREEN
AS PER ENGINEERS DIRECTION



WARM AIR
MIXING SYSTEM

SEE NOTE 4
FROM E0300
PLENUM

FR-0300A/B
INLET VACUUM FILTERS
MFG: SOLBERG
MODEL: CSL-485P(2)-1200F
SIZE: 26 7/8" OD x 69 1/2" F/F
TEMP RANGE: -26°C TO 104°C
MAT'L: CARBON STEEL
ELEMENTS: POLYESTER TYPE (2 MICRON)
No. OF ELEMENTS: 2



MTR's REQUIRED
ON ALL
PRESSURE RETAINING
PIPE & FITTINGS

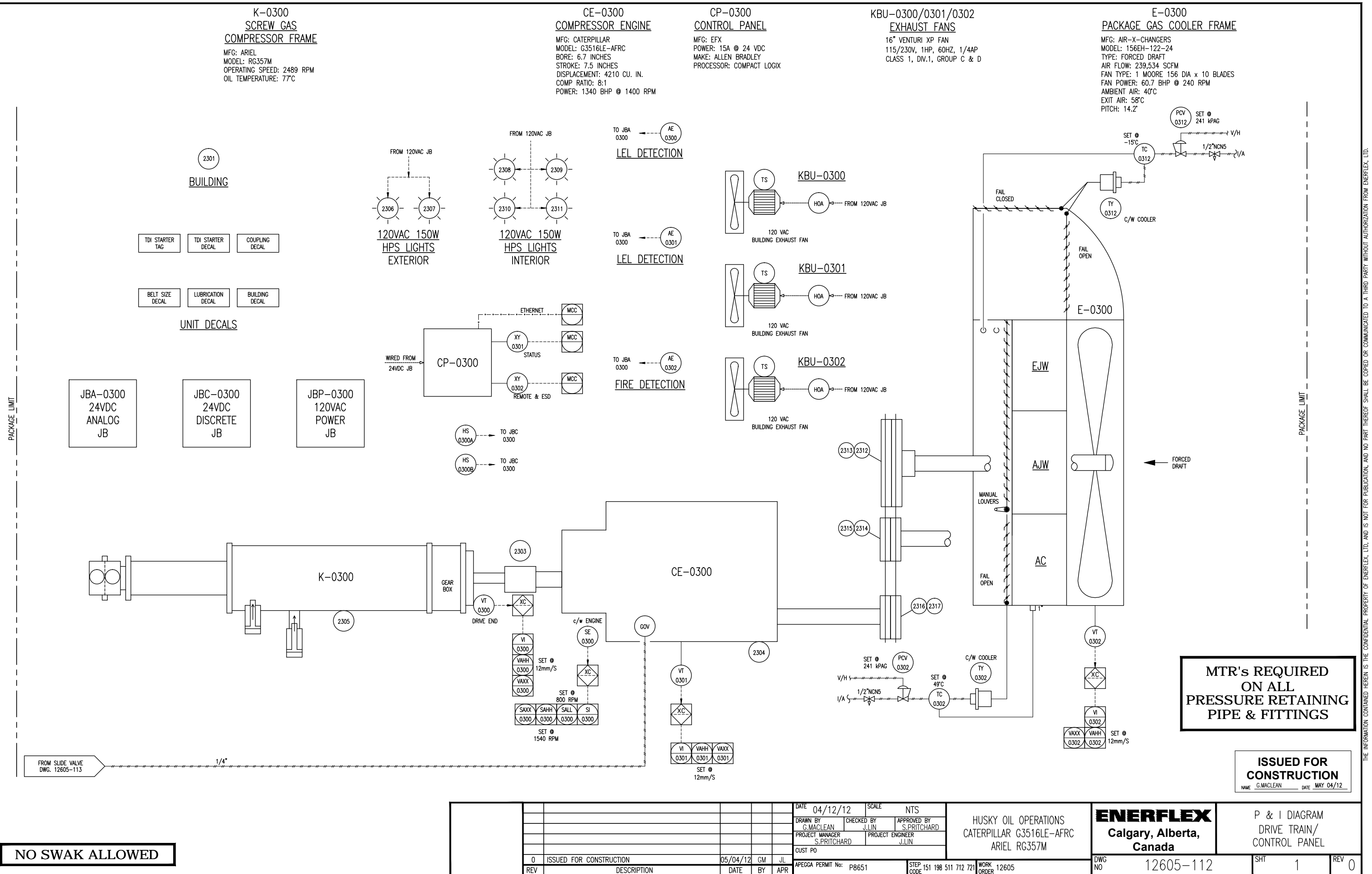
FINAL
AS BUILT
NAME: G.MACLEAN DATE: 09/12/12

- NOTES:
1. SEE DRAWING 099 FOR GENERAL NOTES & PROJECT OVERVIEW.
2. SEE DRAWING 199 FOR P&ID SYMBOL LEGEND.
3. THROTTLE VALVE TO CONTROL BLOWDOWN RATE & AVOID COMPRESSOR OIL LOSS.
4. TAKE WARM AIR FROM BOTTOM OF COOLER PLENUM.

							DATE 04/12/12	SCALE NTS		HUSKY OIL OPERATIONS CATERPILLAR G3516LE-AFRC ARIEL RG357M	ENERFLEX Calgary, Alberta, Canada	P & I DIAGRAM PROCESS GAS STAGE #1		
							DRAWN BY G.MACLEAN	CHECKED BY J.LIN	APPROVED BY S.PRITCHARD					
	2	AS-BUILT	09/12/12	GM	JL	PROJECT MANAGER S.PRITCHARD	PROJECT ENGINEER J.LIN							
	1	REVISED BLOWDOWN, CUSTOMER REQUEST	07/30/12	SE	JL	CUST PO								
	0	ISSUED FOR CONSTRUCTION	05/04/12	GM	JL									
	REV	DESCRIPTION	DATE	BY	APR	APEGGA PERMIT No: P8651		STEP CODE 490 511 591	WORK ORDER 12605					
										DWG NO 12605-111	SHT 1	REV 2		

NO SWAK ALLOWED

THE INFORMATION CONTAINED HEREIN IS THE CONFIDENTIAL PROPERTY OF ENERFLEX, LTD. AND IS NOT FOR PUBLICATION, AND NO PART THEREOF SHALL BE COPIED OR COMMUNICATED TO A THIRD PARTY WITHOUT AUTHORIZATION FROM ENERFLEX, LTD.



THE INFORMATION CONTAINED HEREIN IS THE CONFIDENTIAL PROPERTY OF ENERFLEX, LTD. AND IS NOT FOR PUBLICATION, AND NO PART THEREOF SHALL BE COPIED OR COMMUNICATED TO A THIRD PARTY WITHOUT AUTHORIZATION FROM ENERFLEX, LTD.

PLOT DATE Sep 12, 2012, gmaclean P:\10000 Projects\12605 Husky Oil - Air Compressor G3516LE RG357M\4. Drafting\PM\12605-111-JS-Built.dwg

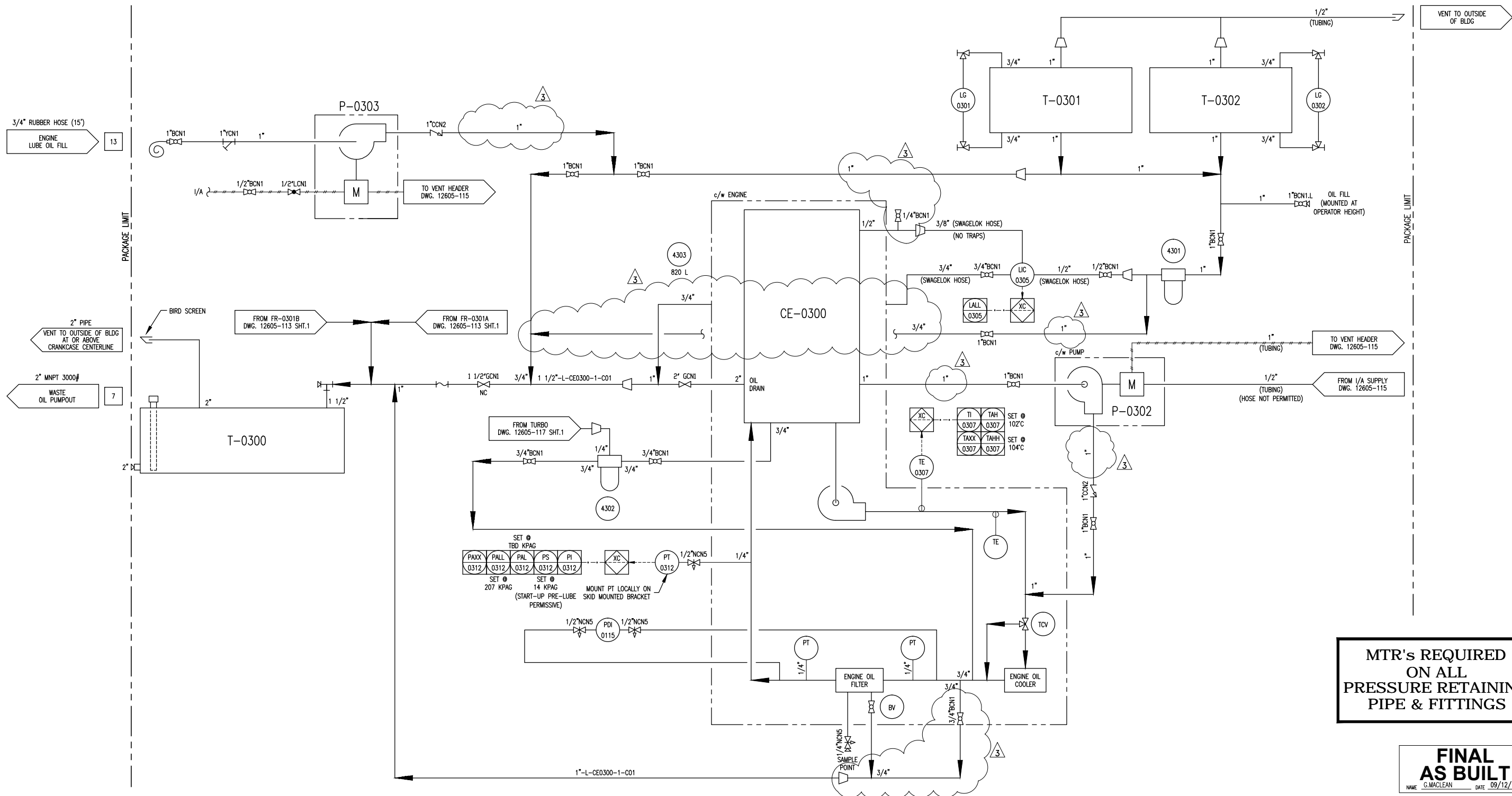
T-0300
WASTE OIL TANK
MFG: EFX
CAPACITY: 1281L
SIZE: 24"x8"x480", 3/8" THK
MAT'L: G40.21350W

P-0302
ENGINE PRE-LUBE
OIL PUMP
MFG: WARREN RUPP
MODEL: G1FB1ABTXNSX00
INLET GAS PRESSURE: 689 KPAG
FLOW: 95 LPM @ 138 KPAG

P-0303
ENGINE OIL
TRANSFER PUMP
MFG: YAMADA
MODEL: NDP-25BAN
INLET GAS PRESSURE: 138-689 KPAG
FLOW: 100 LPM @ 276 KPAG

T-0301
COMPRESSOR/ENGINE
OIL DAYTANK
MFG: EFX
CAPACITY: 480L
SIZE: 12"x8"x340", 1/4" THK
MATERIAL: G40.21350W

T-0302
COMPRESSOR/ENGINE
OIL DAYTANK
MFG: EFX
CAPACITY: 480L
SIZE: 12"x8"x340", 1/4" THK



MTR's REQUIRED
ON ALL
PRESSURE RETAINING
PIPE & FITTINGS

FINAL
AS BUILT
NAME: G.MACLEAN DATE: 09/12/12

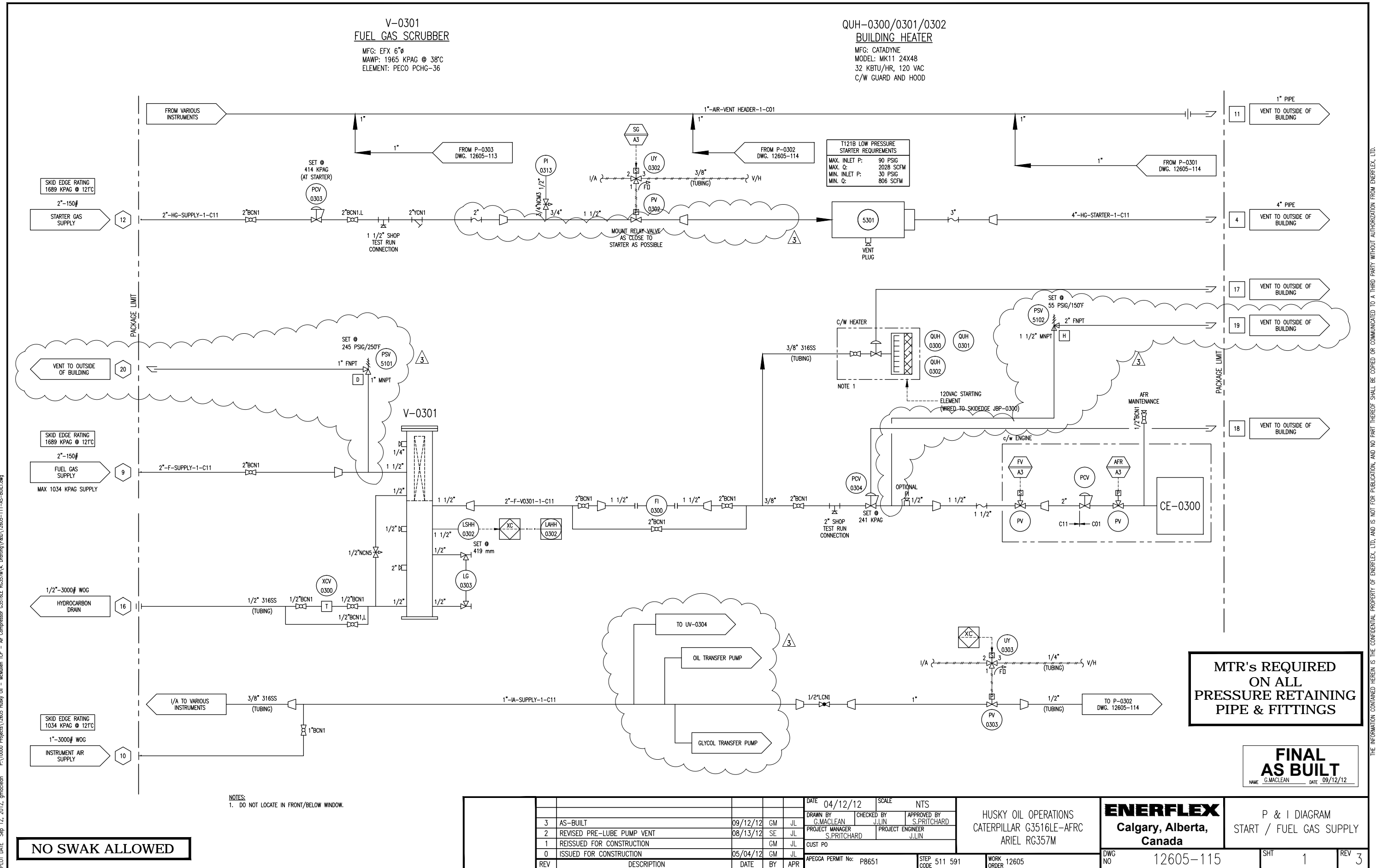
NO SWAK ALLOWED

							DATE	04/12/12	SCALE	NTS	HUSKY OIL OPERATIONS CATERPILLAR G3516LE-AFRC ARIEL RG357M	ENERFLEX Calgary, Alberta, Canada	P & I DIAGRAM ENGINE LUBE OIL			
	3	AS-BUILT	09/12/12	GM	JL	DRAWN BY	G.MACLEAN	CHECKED BY	J.LIN	APPROVED BY				S.PRITCHARD		
	2	REVISED PRE-LUBE PUMP VENT	08/13/12	SE	JL	PROJECT MANAGER	S.PRITCHARD	PROJECT ENGINEER	J.LIN							
	1	RE-ISSUED FOR CONSTRUCTION														
	0	ISSUED FOR CONSTRUCTION	05/04/12	GM	JL	CUST PO										
	REV	DESCRIPTION	DATE	BY	APR	APEGGA PERMIT No:	P8651	STEP CODE	511 591	WORK ORDER	12605	DWG NO	12605-114	SHT	1	REV

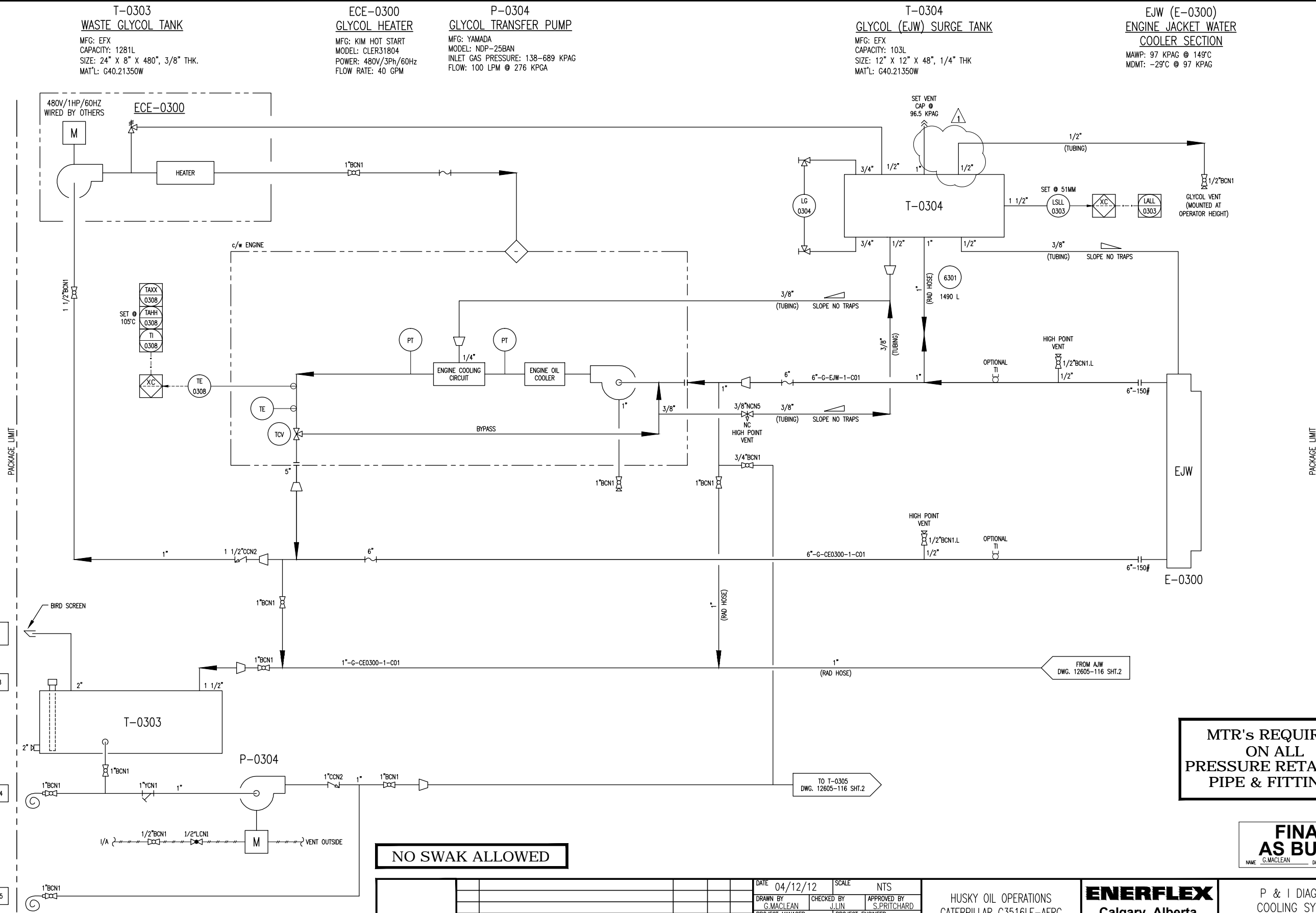
HUSKY OIL OPERATIONS
CATERPILLAR G3516LE-AFRC
ARIEL RG357M

ENERFLEX
Calgary, Alberta,
Canada

P & I DIAGRAM
ENGINE LUBE OIL



PLOT DATE Sep 12, 2012, gmaclean P:\10000 Projects\12605 Husky Oil - McMillen TCF - Air Compressor G3516LE RG357M\4. Drafting\RAD\12605-111-AS-BUILT.dwg



NO SWAK ALLOWED

MTR's REQUIRED
ON ALL
PRESSURE RETAINING
PIPE & FITTINGS

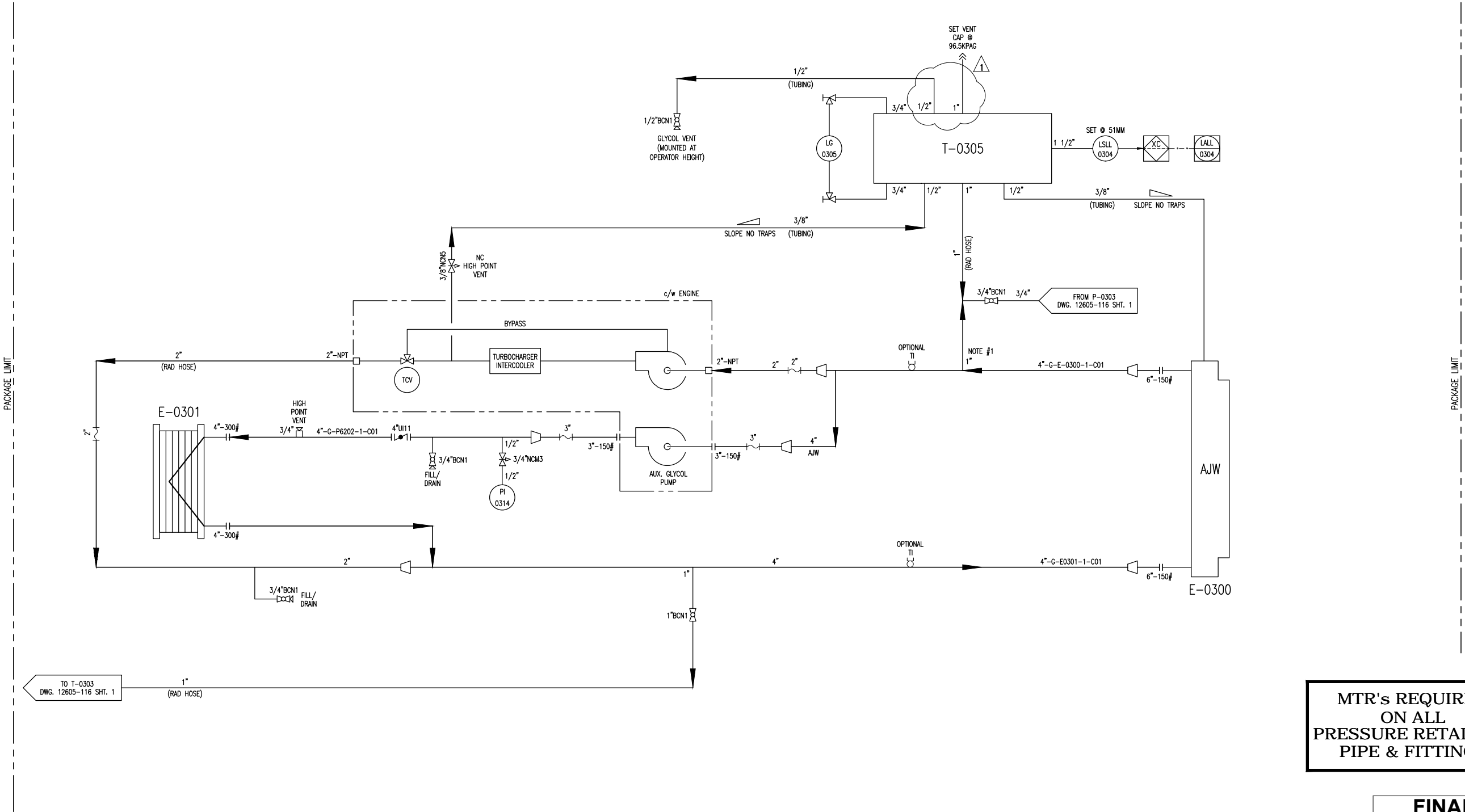
FINAL
AS BUILT
NAME G.MACLEAN DATE 09/12/12

																																																																																																																																																																																																																																																																																																																																																																																																																																																																																																																																																																																																																																																																																																																																																																																																																																																																																																																																																																																																																																																																																																																																																																																																																																																																																																																																																																																																																																																																																																																																																																																																																																																																																</
--	--	--	--	--	--	--	--	--	--	--	--	--	--	--	--	--	--	--	--	--	--	--	--	--	--	--	--	--	--	--	--	--	--	--	--	--	--	--	--	--	--	--	--	--	--	--	--	--	--	--	--	--	--	--	--	--	--	--	--	--	--	--	--	--	--	--	--	--	--	--	--	--	--	--	--	--	--	--	--	--	--	--	--	--	--	--	--	--	--	--	--	--	--	--	--	--	--	--	--	--	--	--	--	--	--	--	--	--	--	--	--	--	--	--	--	--	--	--	--	--	--	--	--	--	--	--	--	--	--	--	--	--	--	--	--	--	--	--	--	--	--	--	--	--	--	--	--	--	--	--	--	--	--	--	--	--	--	--	--	--	--	--	--	--	--	--	--	--	--	--	--	--	--	--	--	--	--	--	--	--	--	--	--	--	--	--	--	--	--	--	--	--	--	--	--	--	--	--	--	--	--	--	--	--	--	--	--	--	--	--	--	--	--	--	--	--	--	--	--	--	--	--	--	--	--	--	--	--	--	--	--	--	--	--	--	--	--	--	--	--	--	--	--	--	--	--	--	--	--	--	--	--	--	--	--	--	--	--	--	--	--	--	--	--	--	--	--	--	--	--	--	--	--	--	--	--	--	--	--	--	--	--	--	--	--	--	--	--	--	--	--	--	--	--	--	--	--	--	--	--	--	--	--	--	--	--	--	--	--	--	--	--	--	--	--	--	--	--	--	--	--	--	--	--	--	--	--	--	--	--	--	--	--	--	--	--	--	--	--	--	--	--	--	--	--	--	--	--	--	--	--	--	--	--	--	--	--	--	--	--	--	--	--	--	--	--	--	--	--	--	--	--	--	--	--	--	--	--	--	--	--	--	--	--	--	--	--	--	--	--	--	--	--	--	--	--	--	--	--	--	--	--	--	--	--	--	--	--	--	--	--	--	--	--	--	--	--	--	--	--	--	--	--	--	--	--	--	--	--	--	--	--	--	--	--	--	--	--	--	--	--	--	--	--	--	--	--	--	--	--	--	--	--	--	--	--	--	--	--	--	--	--	--	--	--	--	--	--	--	--	--	--	--	--	--	--	--	--	--	--	--	--	--	--	--	--	--	--	--	--	--	--	--	--	--	--	--	--	--	--	--	--	--	--	--	--	--	--	--	--	--	--	--	--	--	--	--	--	--	--	--	--	--	--	--	--	--	--	--	--	--	--	--	--	--	--	--	--	--	--	--	--	--	--	--	--	--	--	--	--	--	--	--	--	--	--	--	--	--	--	--	--	--	--	--	--	--	--	--	--	--	--	--	--	--	--	--	--	--	--	--	--	--	--	--	--	--	--	--	--	--	--	--	--	--	--	--	--	--	--	--	--	--	--	--	--	--	--	--	--	--	--	--	--	--	--	--	--	--	--	--	--	--	--	--	--	--	--	--	--	--	--	--	--	--	--	--	--	--	--	--	--	--	--	--	--	--	--	--	--	--	--	--	--	--	--	--	--	--	--	--	--	--	--	--	--	--	--	--	--	--	--	--	--	--	--	--	--	--	--	--	--	--	--	--	--	--	--	--	--	--	--	--	--	--	--	--	--	--	--	--	--	--	--	--	--	--	--	--	--	--	--	--	--	--	--	--	--	--	--	--	--	--	--	--	--	--	--	--	--	--	--	--	--	--	--	--	--	--	--	--	--	--	--	--	--	--	--	--	--	--	--	--	--	--	--	--	--	--	--	--	--	--	--	--	--	--	--	--	--	--	--	--	--	--	--	--	--	--	--	--	--	--	--	--	--	--	--	--	--	--	--	--	--	--	--	--	--	--	--	--	--	--	--	--	--	--	--	--	--	--	--	--	--	--	--	--	--	--	--	--	--	--	--	--	--	--	--	--	--	--	--	--	--	--	--	--	--	--	--	--	--	--	--	--	--	--	--	--	--	--	--	--	--	--	--	--	--	--	--	--	--	--	--	--	--	--	--	--	--	--	--	--	--	--	--	--	--	--	--	--	--	--	--	--	--	--	--	--	--	--	--	--	--	--	--	--	--	--	--	--	--	--	--	--	--	--	--	--	--	--	--	--	--	--	--	--	--	--	--	--	--	--	--	--	--	--	--	--	--	--	--	--	--	--	--	--	--	--	--	--	--	--	--	--	--	--	--	--	--	--	--	--	--	--	--	--	--	--	--	--	--	--	--	--	--	--	--	--	--	--	--	--	--	--	--	--	--	--	--	--	--	--	--	--	--	--	--	--	--	--	--	--	--	--	--	--	--	--	--	--	--	--	--	--	--	--	--	--	--	--	--	--	--	--	--	--	--	--	--	--	--	--	--	--	--	--	--	--	--	--	--	--	--	--	--	--	--	--	--	--	--	--	--	--	--	--	--	--	--	--	--	--	--	--	--	--	--	--	--	--	--	--	--	--	--	--	--	--	--	--	--	--	--	--	--	--	--	--	--	--	--	--	--	--	--	--	--	--	--	--	--	--	--	--	--	--	--	--	--	--	--	--	--	--	--	--	--	--	--	--	--	--	--	--	--	--	--	--	--	--	--	--	--	--	--	--	--	--	--	--	--	--	--	--	--	--	--	--	--	--	--	--	--	--	--	--	--	--	--	--	--	--	--	--	--	--	--	--	--	--	--	--	--	--	--	--	--	--	--	--	--	--	--	--	--	--	--	--	--	--	--	--	--	--	--	--	--	--	--	--	--	--	--	--	--	--	--	--	--	--	--	--	--	--	--	--	--	--	--	--	--	--	--	--	--	--	--	--	--	--	--	--	--	--	--	--	--	--	--	--	--	--	--	--	--	--	--	--	--	--	--	--	--	--	--	--	--	--	--	--	--	--	--	--	--	--	--	--	--	--	--	--	--	--	--	--	--	--	--	--	--	--	--	--	--	--	--	--	--	--	--	--	--	--	--	--	--	--	--	--	--	--	--	--	--	--	--	--	--	--	--	--	--	--	--	--	--	--	--	--	--	--	--	--	--	--	--	--	--	--	--	--	--	--	--	--	--	--	--	--	--	--	--	--	--	--	--	--	--	--	--	--	--	--	--	--	--	--	--	--	--	--	--	--	--	--	--	--	--	--	--	--	--	--	--	--	--	--	--	--	--	--	--	--	--	--	--	--	--	--	--	--	--	--	--	--	--	--	--	--	--	--	--	--	--	--	--	--	--	--	--	--	--	--	--	--	--	--	--	--	--	--	--	--	--	--	--	--	--	--	--	--	--	--	--	--	--	--	--	--	--	--	--	--	--	--	--	--	--	--	--	--	--	--	--	--	--	--	--	--	--	--	--	--	--	--	--	--	--	--	--	--	--	--	--	--	--	--	--	--	--	--	--	--	--	--	--	--	--	--	--	--	--	--	--	--	--	--	--	--	--	--	--	--	--	--	--	--	--	--	--	--	--	--	--	--	--	--	--	--	--	--	--	--	--	--	--	--	--	--	--	--	--	--	--	--	--	--	--	--	--	--	--	--	--	--	--	--	--	--	--	--	--	--	--	--	--	--	--	--	--	--	--	--	--	--	--	--	--	--	--	--	--	--	--	--	--	--	--	--	--	--	--	--	--	--	--	--	--	--	--	--	--	--	--	--	--	--	--	--	--	--	--	--	--	--	--	--	--	--	--	--	--	--	--	--	--	--	--	--	--	--	--	--	----

E-0301
COMPRESSOR OIL COOLER
SEE DWG. #12605-113

T-0305
GLYCOL (AJW) SURGE TANK
MFG: EFX
CAPACITY: 103L
SIZE: 12" X 12" X 48", 1/4" THK
MAT'L: G40.21350W

AJW (E-0300)
AUXILIARY JACKET WATER
COOLER SECTION
MAWP: 97 KPAG @ 149°C
MDMT: -29°C @ 97 KPAG



MTR's REQUIRED
ON ALL
PRESSURE RETAINING
PIPE & FITTINGS

FINAL
AS BUILT
NAME: G.MACLEAN DATE: 09/12/12

NO SWAK ALLOWED

NOTES:
1. LOCATE STATIC HEAD CONNECTION CLOSE TO PUMP INLET.

																																																																																																																																																																																																																																																																																																																																																																																																																																																																																																																																																																																																																																																																																																																																																																																																																																																																																																																																																																																																																																																																																																																																																																																																																																																																																																																																																																																																																																																																																																																																																																																																																																																																																																																																																																														</
--	--	--	--	--	--	--	--	--	--	--	--	--	--	--	--	--	--	--	--	--	--	--	--	--	--	--	--	--	--	--	--	--	--	--	--	--	--	--	--	--	--	--	--	--	--	--	--	--	--	--	--	--	--	--	--	--	--	--	--	--	--	--	--	--	--	--	--	--	--	--	--	--	--	--	--	--	--	--	--	--	--	--	--	--	--	--	--	--	--	--	--	--	--	--	--	--	--	--	--	--	--	--	--	--	--	--	--	--	--	--	--	--	--	--	--	--	--	--	--	--	--	--	--	--	--	--	--	--	--	--	--	--	--	--	--	--	--	--	--	--	--	--	--	--	--	--	--	--	--	--	--	--	--	--	--	--	--	--	--	--	--	--	--	--	--	--	--	--	--	--	--	--	--	--	--	--	--	--	--	--	--	--	--	--	--	--	--	--	--	--	--	--	--	--	--	--	--	--	--	--	--	--	--	--	--	--	--	--	--	--	--	--	--	--	--	--	--	--	--	--	--	--	--	--	--	--	--	--	--	--	--	--	--	--	--	--	--	--	--	--	--	--	--	--	--	--	--	--	--	--	--	--	--	--	--	--	--	--	--	--	--	--	--	--	--	--	--	--	--	--	--	--	--	--	--	--	--	--	--	--	--	--	--	--	--	--	--	--	--	--	--	--	--	--	--	--	--	--	--	--	--	--	--	--	--	--	--	--	--	--	--	--	--	--	--	--	--	--	--	--	--	--	--	--	--	--	--	--	--	--	--	--	--	--	--	--	--	--	--	--	--	--	--	--	--	--	--	--	--	--	--	--	--	--	--	--	--	--	--	--	--	--	--	--	--	--	--	--	--	--	--	--	--	--	--	--	--	--	--	--	--	--	--	--	--	--	--	--	--	--	--	--	--	--	--	--	--	--	--	--	--	--	--	--	--	--	--	--	--	--	--	--	--	--	--	--	--	--	--	--	--	--	--	--	--	--	--	--	--	--	--	--	--	--	--	--	--	--	--	--	--	--	--	--	--	--	--	--	--	--	--	--	--	--	--	--	--	--	--	--	--	--	--	--	--	--	--	--	--	--	--	--	--	--	--	--	--	--	--	--	--	--	--	--	--	--	--	--	--	--	--	--	--	--	--	--	--	--	--	--	--	--	--	--	--	--	--	--	--	--	--	--	--	--	--	--	--	--	--	--	--	--	--	--	--	--	--	--	--	--	--	--	--	--	--	--	--	--	--	--	--	--	--	--	--	--	--	--	--	--	--	--	--	--	--	--	--	--	--	--	--	--	--	--	--	--	--	--	--	--	--	--	--	--	--	--	--	--	--	--	--	--	--	--	--	--	--	--	--	--	--	--	--	--	--	--	--	--	--	--	--	--	--	--	--	--	--	--	--	--	--	--	--	--	--	--	--	--	--	--	--	--	--	--	--	--	--	--	--	--	--	--	--	--	--	--	--	--	--	--	--	--	--	--	--	--	--	--	--	--	--	--	--	--	--	--	--	--	--	--	--	--	--	--	--	--	--	--	--	--	--	--	--	--	--	--	--	--	--	--	--	--	--	--	--	--	--	--	--	--	--	--	--	--	--	--	--	--	--	--	--	--	--	--	--	--	--	--	--	--	--	--	--	--	--	--	--	--	--	--	--	--	--	--	--	--	--	--	--	--	--	--	--	--	--	--	--	--	--	--	--	--	--	--	--	--	--	--	--	--	--	--	--	--	--	--	--	--	--	--	--	--	--	--	--	--	--	--	--	--	--	--	--	--	--	--	--	--	--	--	--	--	--	--	--	--	--	--	--	--	--	--	--	--	--	--	--	--	--	--	--	--	--	--	--	--	--	--	--	--	--	--	--	--	--	--	--	--	--	--	--	--	--	--	--	--	--	--	--	--	--	--	--	--	--	--	--	--	--	--	--	--	--	--	--	--	--	--	--	--	--	--	--	--	--	--	--	--	--	--	--	--	--	--	--	--	--	--	--	--	--	--	--	--	--	--	--	--	--	--	--	--	--	--	--	--	--	--	--	--	--	--	--	--	--	--	--	--	--	--	--	--	--	--	--	--	--	--	--	--	--	--	--	--	--	--	--	--	--	--	--	--	--	--	--	--	--	--	--	--	--	--	--	--	--	--	--	--	--	--	--	--	--	--	--	--	--	--	--	--	--	--	--	--	--	--	--	--	--	--	--	--	--	--	--	--	--	--	--	--	--	--	--	--	--	--	--	--	--	--	--	--	--	--	--	--	--	--	--	--	--	--	--	--	--	--	--	--	--	--	--	--	--	--	--	--	--	--	--	--	--	--	--	--	--	--	--	--	--	--	--	--	--	--	--	--	--	--	--	--	--	--	--	--	--	--	--	--	--	--	--	--	--	--	--	--	--	--	--	--	--	--	--	--	--	--	--	--	--	--	--	--	--	--	--	--	--	--	--	--	--	--	--	--	--	--	--	--	--	--	--	--	--	--	--	--	--	--	--	--	--	--	--	--	--	--	--	--	--	--	--	--	--	--	--	--	--	--	--	--	--	--	--	--	--	--	--	--	--	--	--	--	--	--	--	--	--	--	--	--	--	--	--	--	--	--	--	--	--	--	--	--	--	--	--	--	--	--	--	--	--	--	--	--	--	--	--	--	--	--	--	--	--	--	--	--	--	--	--	--	--	--	--	--	--	--	--	--	--	--	--	--	--	--	--	--	--	--	--	--	--	--	--	--	--	--	--	--	--	--	--	--	--	--	--	--	--	--	--	--	--	--	--	--	--	--	--	--	--	--	--	--	--	--	--	--	--	--	--	--	--	--	--	--	--	--	--	--	--	--	--	--	--	--	--	--	--	--	--	--	--	--	--	--	--	--	--	--	--	--	--	--	--	--	--	--	--	--	--	--	--	--	--	--	--	--	--	--	--	--	--	--	--	--	--	--	--	--	--	--	--	--	--	--	--	--	--	--	--	--	--	--	--	--	--	--	--	--	--	--	--	--	--	--	--	--	--	--	--	--	--	--	--	--	--	--	--	--	--	--	--	--	--	--	--	--	--	--	--	--	--	--	--	--	--	--	--	--	--	--	--	--	--	--	--	--	--	--	--	--	--	--	--	--	--	--	--	--	--	--	--	--	--	--	--	--	--	--	--	--	--	--	--	--	--	--	--	--	--	--	--	--	--	--	--	--	--	--	--	--	--	--	--	--	--	--	--	--	--	--	--	--	--	--	--	--	--	--	--	--	--	--	--	--	--	--	--	--	--	--	--	--	--	--	--	--	--	--	--	--	--	--	--	--	--	--	--	--	--	--	--	--	--	--	--	--	--	--	--	--	--	--	--	--	--	--	--	--	--	--	--	--	--	--	--	--	--	--	--	--	--	--	--	--	--	--	--	--	--	--	--	--	--	--	--	--	--	--	--	--	--	--	--	--	--	--	--	--	--	--	--	--	--	--	--	--	--	--	--	--	--	--	--	--	--	--	--	--	--	--	--	--	--	--	--	--	--	--	--	--	--	--	--	--	--	--	--	--	--	--	--	--	--	--	--	--	--	--	--	--	--	--	--	--	--	--	--	--	--	--	--	--	--	--	--	--	--	--	--	--	--	--	--	--	--	--	--	--	--	--	--	--	--	--	--	--	--	--	--	--	--	--	--	--	--	--	--	--	--	--	--	--	--	--	--	--	--	--	--	--	--	--	--	--	--	--	--	--	--	--	--	--	--	--	--	--	--	--	--	--	--	--	--	--	--	--	--	--	--	--	--	--	--	--	--	--	--	--	--	--	--	--	--	--	--	--	--	--	--	--	--	--	--	--	--	--	--	--	--	--	--	--	--	--	--	--	--	--	--	--	--	--	--	--	--	--	--	--	--	--	--	--	--	--	--	--	--	--	--	----

PLOT DATE: Sep 12, 2012, gmaclean P:\10000 Projects\12605 Husky Oil - McMillen TOP - Air Compressor G3516LE RG357M\4. Drafting\PMO\12605-111-AS-BUILT.dwg

NO SWAK ALLOWED

PACKAGE LIMIT

SAMPLE POINTS
(INTERNAL TO ENGINE)

CE-0300

LOCALLY MOUNT
(TYP.)

- 1/4"BCN1 INTAKE MANIFOLD (FROM INTERCOOLER)
- 1/4"BCN1 PRE TURBO ENGINE EXHAUST (LEFT BANK)
- 1/4"BCN1 PRE TURBO ENGINE EXHAUST (RIGHT BANK)
- 1/4"BCN1 REGULATED FUEL GAS INLET (AFTER ENGINE REGULATOR)
- 1/4"BCN1 AIR/FUEL MIXTURE
- 1/4"BCN1 CRANKCASE PRESSURE

7303 EXHAUST SILENCER

MFG: SILEX
MODEL: JDDS-14
GRADE: HOSPITAL

EXHAUST STACK
1.2 TIMES + 0.5M
BLDG. PEAK HEIGHT
FROM B.O.S.

6

SAMPLE
PORT 3/4" 14"-150#

RUN CRANKCASE VENT LINE AS CLOSE
AS POSSIBLE TO EXHAUST LINE/SILENCER

3" TUBING
SLOPE
NO TRAPS

BUILDING WALL

MOUNTED IN HORIZONTAL RUN
BETWEEN ENGINE & SILENCER

SEE NOTE 1.

SEE DWG #3500-WP FOR ALL
ENGINE INTERCONNECTING
ELECTRICAL & CONTROL WIRE

CONTROL PANEL
JUNCTION BOX

A3 ADVISOR PANEL

THIS REDUCER IS DIRECTLY
ATTACHED TO ENGINE
OUTLET CONNECTION
EXHAUST MUST SUPPORT
ITS OWN WEIGHT AFTER
EXPANSION JOINT

PACKAGE LIMIT

MTR's REQUIRED
ON ALL
PRESSURE RETAINING
PIPE & FITTINGS

FINAL
AS BUILT

NAME: G.MACLEAN DATE: 09/12/12

NOTES:

1. INSULATION FROM ENGINE EXHAUST TO BUILDING WALL.
2. TAKE WARM AIR FROM BOTTOM OF COOLER PLENUM.

REV	DESCRIPTION	DATE	BY	APR
1	AS-BUILT	09/12/12	GM	JL
0	ISSUED FOR CONSTRUCTION	05/04/12	GM	JL

DATE	04/12/12	SCALE	NTS
DRAWN BY	G.MACLEAN	CHECKED BY	J.LIN
PROJECT MANAGER	S.PRITCHARD	APPROVED BY	S.PRITCHARD
CUST PO		PROJECT ENGINEER	J.LIN
APEGA PERMIT No:	P8651	STEP CODE	511 531 591

HUSKY OIL OPERATIONS
CATERPILLAR G3516LE-AFRC
ARIEL RG357M

ENERFLEX
Calgary, Alberta,
Canada

P & I DIAGRAM
AIR / EXHAUST SYSTEMS

DWG NO 12605-117

SHT 1

REV 1

THE INFORMATION CONTAINED HEREIN IS THE CONFIDENTIAL PROPERTY OF ENERFLEX LTD. AND IS NOT FOR PUBLICATION, AND NO PART THEREOF SHALL BE COPIED OR COMMUNICATED TO A THIRD PARTY WITHOUT AUTHORIZATION FROM ENERFLEX, LTD.

PLOT DATE: Sep 12, 2012, gmaclean F:\10000 Projects\12605 Husky Oil - McMillen TCP - Air Compressor G3516LE RG357M\4. Drafting\12605-111-JS-BUILT.dwg

LINE IDENTIFICATION

A-B-CD-E-FGHI-J,J,J

A: NOMINAL LINE SIZE IN INCHES

B: FLUID

A AMMONIA
C CARBON DIOXIDE
CO CARBON MONOXIDE
F FUEL GAS
G GLYCOL
HG HYDROCARBON GAS
HL HYDROCARBON LIQUID
IA INSTR. AIR SUPPLY
IG INSTR. GAS SUPPLY
L LUBE OIL
N NATURAL GAS
O OXYGEN
P PROPANE
PG PURGE GAS
S STEAM
SG SYNGAS
V WASTE PROCESS WATER
W WATER

C: ORIGIN OF LINE

AC AFTER COOLER
B BLOWER/FAN
BYPASS BYPASS STATION
BLOWDOWN BLOWDOWN STATION
C COMPRESSOR
E EXCHANGER
F FILTER
H HEATER
IC INTERSTAGE COOLER
INLET PACKAGE INLET
M MOTOR
P PUMP
PSV PRESSURE SAFETY VALVE
S OIL SKIMMER
T TANK
V PRESSURE VESSEL

D: EQUIPMENT NUMBER 1 TO 9 SEQUENTIAL NUMBERS

E: LINE NUMBER 1 TO 9 SEQUENTIAL NUMBERS FROM ORIGIN

FGHI: PIPING SPECIFICATION

F: MATERIAL GROUP

C CARBON STEEL
L LOW TEMPERATURE CARBON STEEL
S STAINLESS STEEL

G: FLANGE CLASS (ANSI 16.5)

1 150# 9 900#
3 300# 15 1500#
6 600# 25 2500#

H: LINE MATERIAL SPECIFICATION REFERENCE
1 TO 9 SEQUENTIAL NUMBERS

I: SPECIFICATION REFERENCE

R RECIPROCATING SPECIFICATION
BLANK SCREW SPECIFICATION

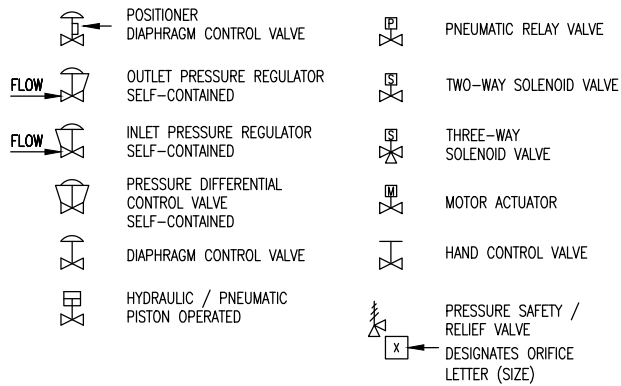
JJJ: MODIFIER / GENERAL

H HOT INSULATION THICKNESS IN INCHES
C COLD INSULATION THICKNESS IN INCHES
PP PERSONAL PROTECTION THICKNESS IN INCHES
HT HEAT TRACING
ST STEAM TRACING
GT GLYCOL TRACING
ET ELECTRICAL TRACING

EXAMPLE: 3"-A-V211-2-C11R-ET,1"

3" LINE-SIZE
A AMMONIA
V211 OIL SEPARATOR
2 SECOND LINE FROM VESSEL
C11R C CARBON STEEL LINE
1 150# ANSI FLANGE RATING
1 LINE MATERIAL SPECIFICATION REFERENCE
R RECIPROCATING SPECIFICATION REFERENCE
ET,1" ELECTRICAL TRACING, 1" THICK INSULATION

CONTROL VALVES



VALVE IDENTIFICATION

A*BCDE.F

A: NOMINAL VALVE SIZE IN INCHES

B: TYPE

A ANGLE GLOBE
B BALL
C CHECK
G GATE
L GLOBE
M MANIFOLD
N NEEDLE
P PLUG
S START UP STRAINER
T TEE STRAINER
U BUTTERFLY
Y WYE STRAINER

C: BODY MATERIAL

B BRONZE
C CARBON STEEL
I CAST IRON
L LOW TEMP. CARBON STEEL
S STAINLESS STEEL

D: END CONNECTIONS

1 FLANGED 150#
3 FLANGED 300#
6 FLANGED 600#
9 FLANGED 900#
15 FLANGED1500#
25 FLANGED 2500#
B BUT WELD
C SW BY NPT
F NPT BY FLANGE MANIFOLD)
N NPT (SCREWED)
M NPT MALE BY NPT FEMALE
S SW (SOCKETWELD)
T TUBE (SWAGELOCK)

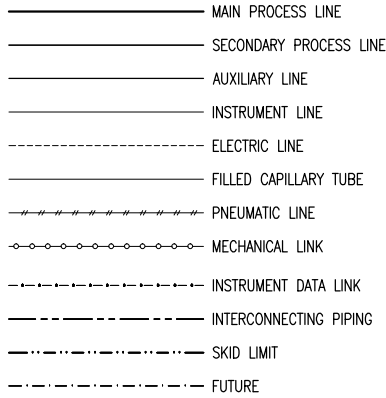
E: IDENTIFIER - NUMBER USED TO SPECIFY VALVE
REFER TO VALVE DATA SHEETS

F: MODIFIER

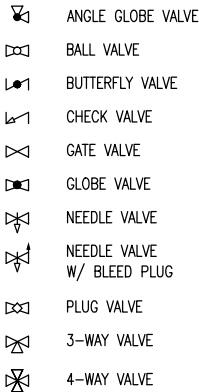
C CHAIN OPERATOR
E EXTENDED BONNET
G GEAR OPERATOR
L LOCKING DEVICE
N NACE TRIM
O OXYGEN SERVICE/CLEANING
P FULL PORT DESIGN
R RTJ FLANGED
S SPRING HANDLE (CLOSE)
X SPECIAL SPECIFICATIONS

EXAMPLE: 6"GC11.C
6" VALVE SIZE C CARBON STEEL 1 API-600
G GATE 1 FLANGED 150# C CHAIN OPERATOR

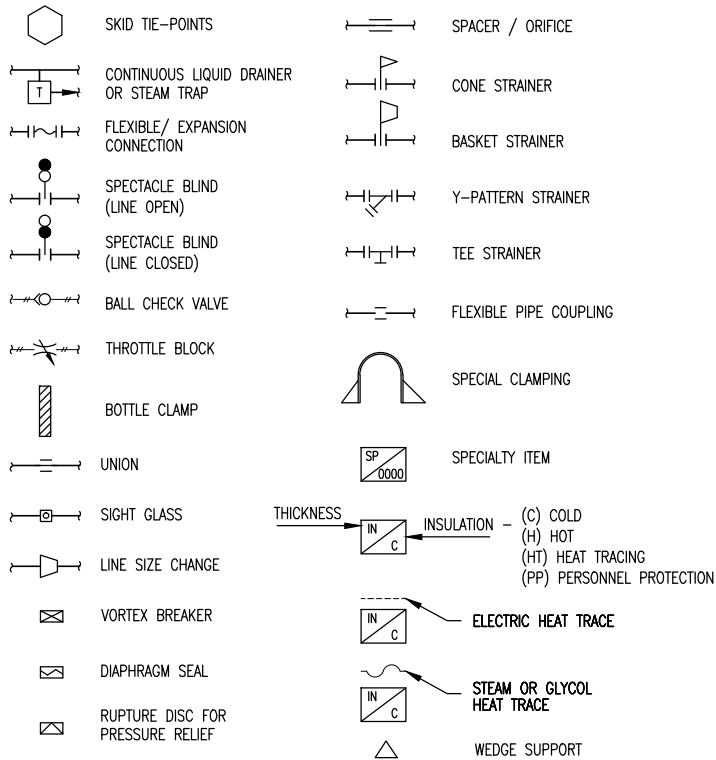
LINE CODE



VALVES



MISCELLANEOUS

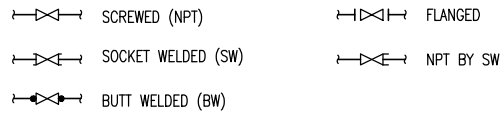


(MODIFIER)

	FIRST LETTER	SUCCEEDING LETTERS	PRIMARY ELEMENT	INDICATOR	RECORDER	CONTROLLER			TRANS-MITTER	CONTROL		CONTROL VALVE OR REGULATOR	SELF-ACTUATED VALVE	RELAY OR CONVERTER
A	ANALYSIS	ALARM	AE	AI	AR	AC	AIC	ARC	AT	AS()	AA()	AV		AY
B	BURNER FLAME	USER'S CHOICE	BE	BI	BR	BC			BT	BS()	BA()	BV		BY
C	CONDUCTIVITY	CONTROL (CLOSE)	CE	CI	CR	CC	CIC	CRC	CT	CS()	CA()	CV		CY
D	DENSITY OR MASS (DIFFERENTIAL)		DE	DI	DR	DC	DIC	DRC	DT	DS()	DA()	DV		DY
E	VOLTAGE	PRIMARY ELEMENT	EE	EI	ER	EC	EIC	ERC	ET	ES()	EA()	EV		EY
F	FLOW (RATIO OR FRACTION)	SHUTDOWN FIRST OUT	FE	FI	FR	FC	FIC	FRC	FT	FS()	FA()	FV	FCV	FY
G	GAUGING	GLASS	GE	GI	GR	GC	GIC	GRC	GT	GS()	GA()	GV		
H	HAND	(HIGH)				HC	HIC		HT	HS()		HV	HCV	HY
I	CURRENT	INDICATE	IE	II	IR	IC	IIC	IRC	IT	IS()	IA()			IY
J	POWER (SCAN)		JE	JI	JR	JC	JIC	JRC	JT	JS()	JA()			JY
K	TIME	CONTROL STATION		KI	KR	KC	KIC	KRC	KT	KS()	KA()			KY
L	LEVEL	LIGHT (LOW)	LE	LI	LR	LC	LIC	LRC	LT	LS()	LA()	LV	LCV	LY
M	MOISTURE, HUMIDITY	(MIDDLE OR INTERMEDIATE)	ME	MI	MR	MC	MIC	MRC	MT	MS()	MA()	MV		MY
N	USER'S CHOICE													
O	POINT	ORIFICE (OPEN)												
P	PRESSURE OR VACUUM	POINT	PE	PI	PR	PC	PIC	PRC	PT	PS()	PA()	PV	PCV	PY
Q	QUANTITY OR EVENT (INTEGRATE/TOTALIZE)			OI	OR	OC	OIC	ORC	OT	OS()	OA()	QV		QY
R	RADIOACTIVITY	RECORD OR PRINT	RE	RI	RR	RC	RIC	RRC	RT	RS()	RA()			RY
S	SPEED OR FREQUENCY	SWITCH		SI	SR	SC	SIC	SRC	ST	SS()	SA()			SY
T	TEMPERATURE	TRANSMIT	TE	TI	TR	TC	TIC	TRC	TT	TS()	TA()	TV	TCV	TY
U	MULTI-VARIABLE	MULTI-FUNCTION		UI	UR	UC	UIC	URC				UV		
V	VISCOSITY OR VIBRATION	VALVE OR DAMPER	VE	VI	VR	VC	VIC	VRC	VT	VS()	AA()	VV		VY
W	WEIGHT OR FORCE	WELL	WE	WI	WR	WC	WIC	WRC	WT	WS()	AA()	WV		WY
X	UNCLASSIFIED	UNCLASSIFIED (DIAGNOSTIC)	XE	XI	XR	XC	XIC	XRC	XT	XS()	SA()	XV		XY
Y	USER'S CHOICE	RELAY OR COMPUTE												YY
Z	POSITION	DRIVE OR ACTUATE	ZE	ZI	ZR	ZC	ZIC	ZRC	ZT	ZS()	ZA()			ZY

TO A THIRD PARTY WITHOUT AUTHORIZATION FROM ENERLEX, LTD.

VALVE CONNECTIONS

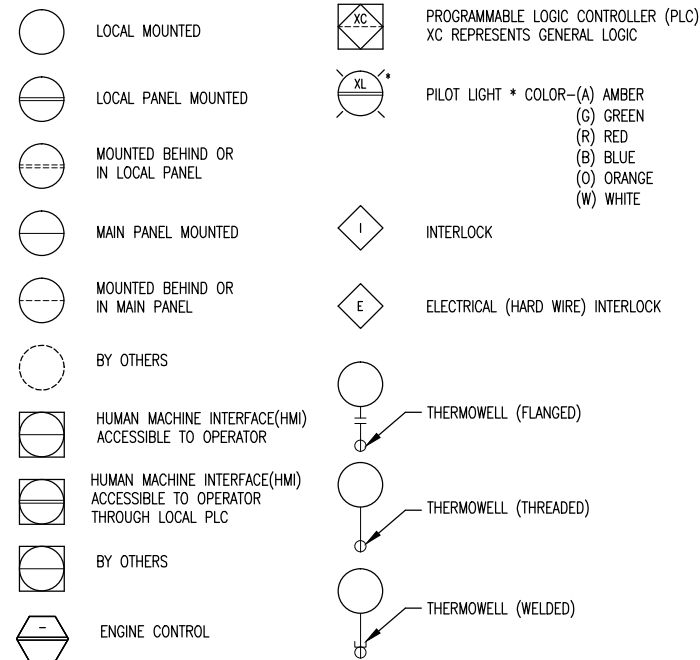


(C) -CLOSE
(H) -HIGH ALARM
(HH) -HIGH SHUTDOWN
(O) -OPEN
(L) -LOW ALARM
(LL) -LOW SHUTDOWN
(XX) -DIAGNOSTIC SHUTDOWN
(USED TO INDICATE THE
DIAGNOSTIC CHECK REQ'D
ON THE ANALOG INPUT)

ABBREVIATIONS

BW BUTT WELD
CA CORROSION ALLOWANCE
CS CARBON STEEL
C/W COMPLETE WITH
CSC CAR SEALED CLOSED
CSO CAR SEALED OPEN
CUST CUSTOMER
DB DEAD BAND
Δ DELTA (DIFFERENTIAL)
DIR DIRECT ACTING
EFX ENERFLEX LTD.
ESD EMERGENCY SHUTDOWN
FC FAIL CLOSED
FF FLAT FACED
FO FAIL OPEN
FLP FAIL LAST POSITION
FX FROST EXTENSION
FOT FLAT ON TOP
HI HIGH
HLL HIGH LIQUID LEVEL
HS HAND SWITCH
I/A INSTRUMENT AIR
I/G INSTRUMENT GAS
I/P CURRENT TO PRESSURE
I/O INPUT / OUTPUT
LLL LOW LIQUID LEVEL
LPD LOW POINT DRAIN
MAX MAXIMUM
MAWP MAXIMUM ALLOWABLE WORKING PRESSURE
MDMT MINIMUM DESIGN METAL TEMPERATURE
MCC MOTOR CONTROL CENTER
MIN MINIMUM
NLL NORMAL LIQUID LEVEL
NB NATIONAL BOARD
NC NORMALLY CLOSED
NO NORMALLY OPEN
NPT NATIONAL PIPE THREAD (SCREWED)
PB PUSH BUTTON
PL PILOT LIGHT
PLC PROGRAMMABLE LOGIC CONTROLLER
PPD PINTS PER DAY
REV REVERSE ACTING
RF RAISED FACE
RTD RESISTANCE TEMPERATURE DEVICE
RTJ RING TYPE JOINT
S/F SEAM TO FACE OF FLANGE
SS STAINLESS STEEL
S/S SEAM TO SEAM
SCFM STANDARD CUBIC FEET PER MINUTE
SO SLIP-ON
SW SOCKET WELD
SVU SUCTION VALVE UNLOADER
T TUBING
V/H VENT HEADER
VTA VENT TO ATMOSPHERE
VCP VARIABLE VOLUME CONTROL POCKET
FVCP FIXED VOLUME CONTROL POCKET
W/ WITH
W/O WITHOUT

INSTRUMENTS

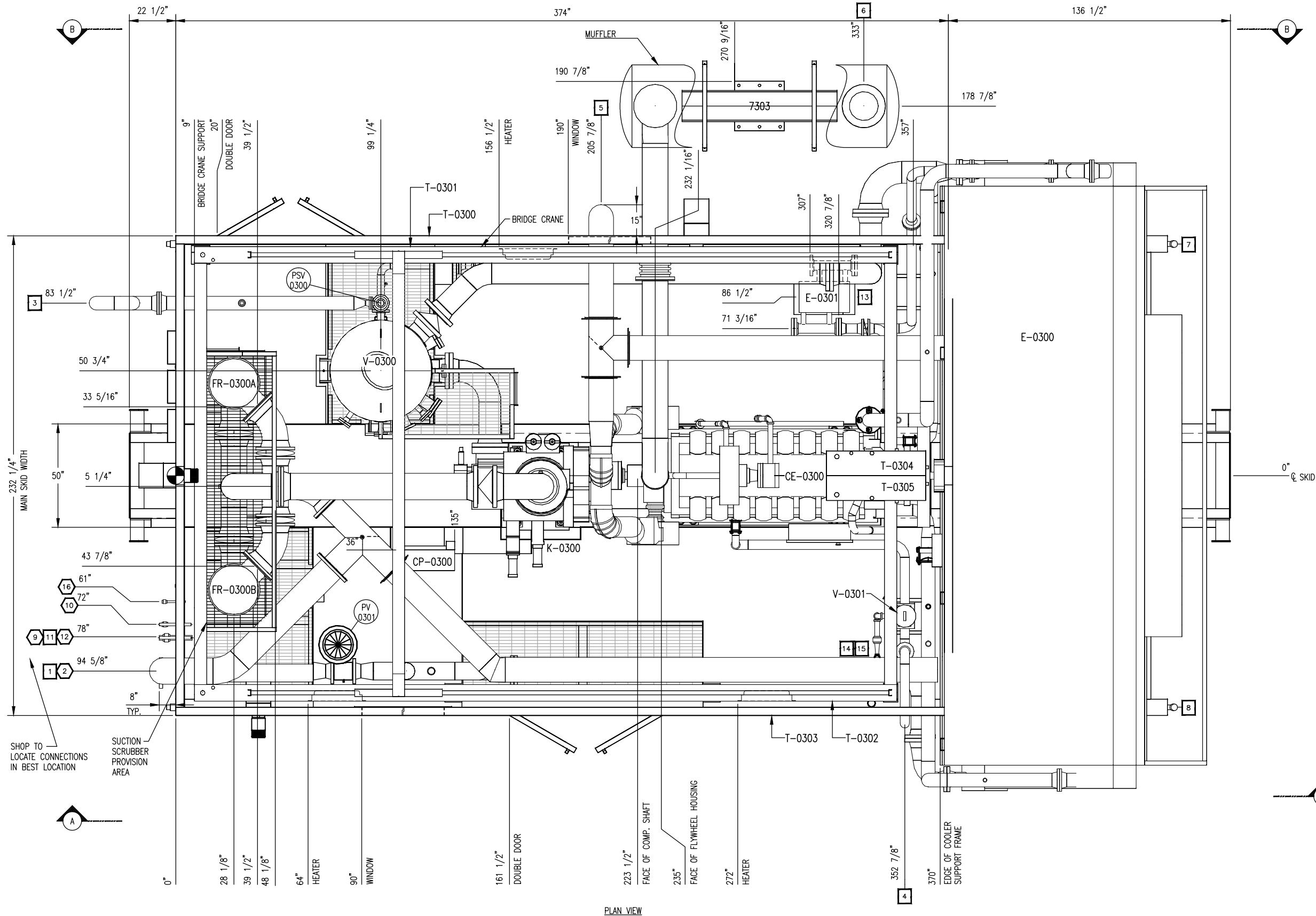


FOR
REFERENCE
NAME G.MACLEAN DATE MAY 04/12

				DATE 04/12/12	SCALE NTS		HUSKY OIL OPERATIONS CATERPILLAR G3516LE-AFRC ARIEL RG357M	ENERFLEX Calgary, Alberta, Canada	LEGEND					
				DRAWN BY G.MACLEAN	CHECKED BY J.LIN	APPROVED BY S.PRITCHARD								
				PROJECT MANAGER S.PRITCHARD	PROJECT ENGINEER J.LIN									
				CUST PO										
0	ISSUED FOR REFERENCE			05/04/12	GM	JL	AEPGGA PERMIT No: P8651			STEP CODE N/A	WORK ORDER 12605	DWG NO 12605-199	SHT 1	REV 0
REV	DESCRIPTION			DATE	BY	APR								

THE INFORMATION CONTAINED HEREIN IS THE CONFIDENTIAL PROPERTY OF ENERFLEX, LTD. AND IS NOT FOR PUBLICATION, AND NO PART THEREOF SHALL BE COPIED OR COMMUNICATED TO A THIRD PARTY WITHOUT AUTHORIZATION FROM ENERFLEX, LTD.

PLOT DATE Sep 12, 2012, gmaclean P:\10000 Projects\12605 Husky Oil - McMillen TDP - Air Compressor G3516LE RG357M\4. Drafting\12605-GA-AS-BUILT.dwg



PLAN VIEW

NOZZLE SCHEDULE				
MARK	SERVICE	SIZE	RATING	TYPE
1	AIR INLET	12"	150#	RF
2	AIR OUTLET	8"	300#	RF
3	HIGH PRESSURE VENT	6"	150#	RF
4	STARTER VENT	4"	-	PIPE
5	ENGINE INTAKE	12"	-	PIPE
6	EXHAUST	14"	-	PIPE
7	WASTE OIL DRAIN	2"	3000#	MNPT
8	WASTE GLYCOL DRAIN	2"	3000#	MNPT
9	FUEL GAS INLET	2"	150#	RF
10	INSTRUMENT AIR SUPPLY	1"	3000#	FNPT
11	INSTRUMENT AIR VENT	1"	-	PIPE
12	START GAS	2"	150#	RF
13	ENGINE/COMP LUBE OIL FILL	3/4"	-	HOSE
14	GLYCOL FILL	3/4"	-	HOSE
15	WASTE GLYCOL PUMPOUT	3/4"	-	HOSE
16	HYDROCARBON DRAIN	1/2"	3000#	FNPT
17	-	-	-	-
18	-	-	-	-

GENERAL SPECIFICATIONS	
OVERALL PACKAGE LENGTH	533"
OVERALL PACKAGE WIDTH	232 1/4"
OVERALL PACKAGE HEIGHT (w/STACK)	317 1/2"
OVERALL OPERATING PACKAGE WEIGHT (LBS)	148000
MAIN SKID SHIPPING WEIGHT (LBS)	109635
BRIDGE CRANE RATING	5 TON
SEAL PAN	<input checked="" type="checkbox"/> FLAT <input type="checkbox"/> NONE <input type="checkbox"/> SLOPED
LOADING METHOD	<input checked="" type="checkbox"/> LIVE ROLL <input type="checkbox"/> CRANE <input checked="" type="checkbox"/> JACK & ROLL
NOTES:	
1. ALL (Z) DIMENSIONS TAKEN FROM TOP OF SKID.	
2. ALL OTHER NOTES FOUND ON DWG. #LEGEND.	
3. ALL SKID EDGE CONNECTIONS ±1/4" TOLERANCE.	
4. Ⓢ ALL TAIL DIMENSIONS FROM REFERENCE POINT.	
5. SKID DEPTH:	
6. CENTER OF GRAVITY:	
X' FROM REF. POINT: 196.1"	
Y' FROM REF. POINT: -0.6"	
Z' FROM REF. POINT: 62.5"	

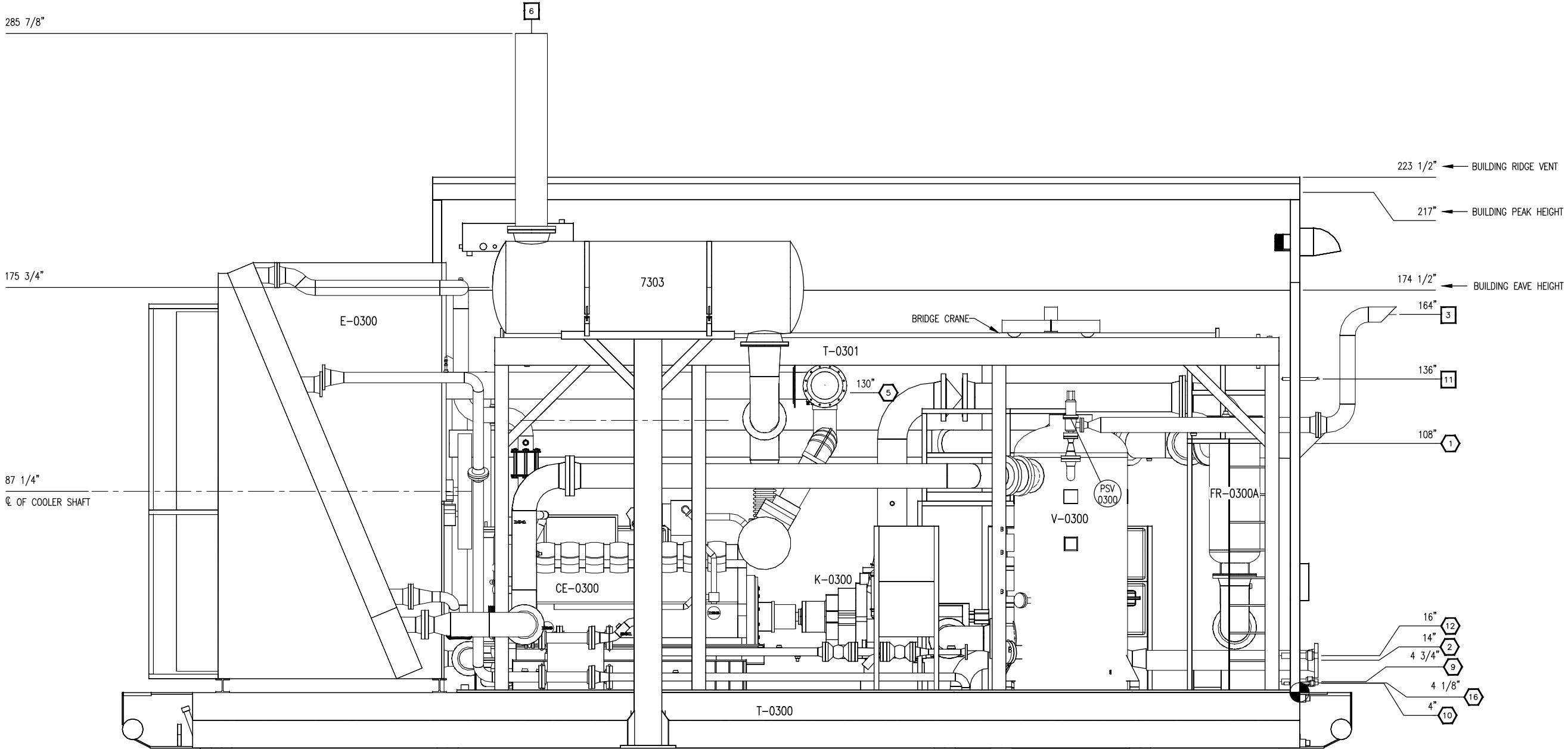


FINAL AS BUILT
NAME G.MACLEAN DATE 09/11/12

				DATE 04/12/12	SCALE 1/2"=1'-0"	HUSKY OIL OPERATIONS CATERPILLAR G3516LE-AFRC ARIEL RG357M		ENERFLEX Calgary, Alberta, Canada		PLAN VIEW	
				DRAWN BY G.MACLEAN	CHECKED BY G.ZHANG						
				PROJECT MANAGER S.PRITCHARD	PROJECT ENGINEER J.LIN						
1	FINAL AS-BUILT	09/11/12	GM	AZ	CUST PO N/A	APEGGA PERMIT No: P8651		STEP CODE 198/298/490/511/591		WORK ORDER	
0	ISSUED FOR CONSTRUCTION	04/27/12	GM	JL							
REV	DESCRIPTION	DATE	BY	APR							

THE INFORMATION CONTAINED HEREIN IS THE CONFIDENTIAL PROPERTY OF ENERFLEX, LTD., AND IS NOT FOR PUBLICATION, AND NO PART THEREOF SHALL BE COPIED OR COMMUNICATED TO A THIRD PARTY WITHOUT AUTHORIZATION FROM ENERFLEX, LTD.

PLOT DATE: Sep 12, 2012, gmodleem P:\10000 Projects\12605 Husky Oil - McMullen TGP - Air Compressor G3516LE RG357M\4. Drafting\12605-04-AS-BUILT.dwg



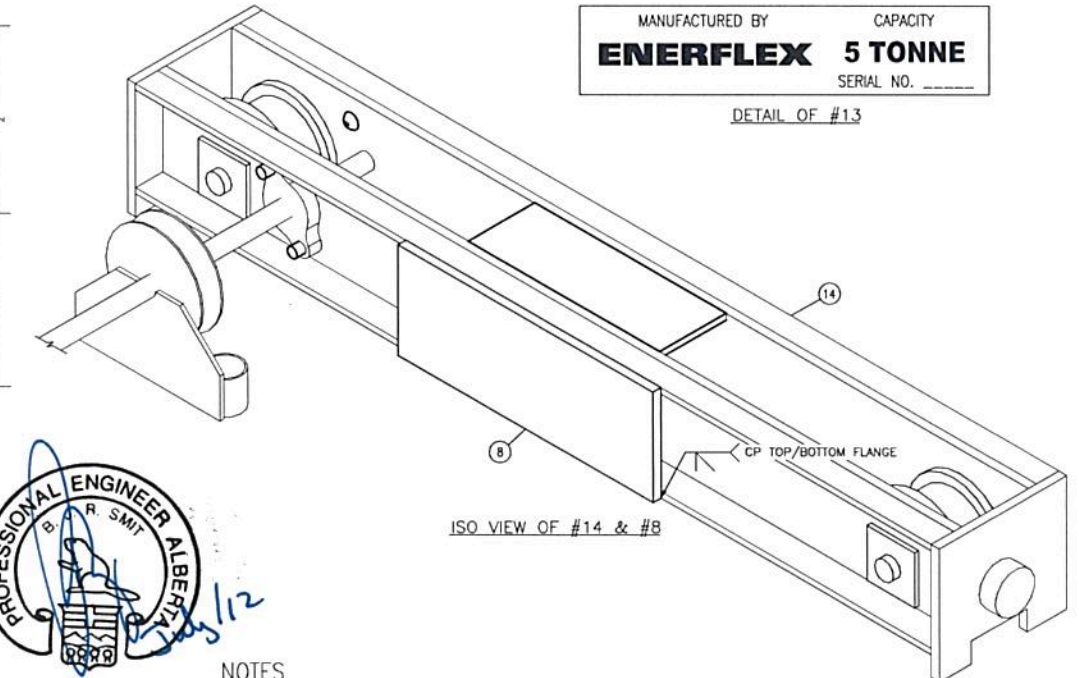
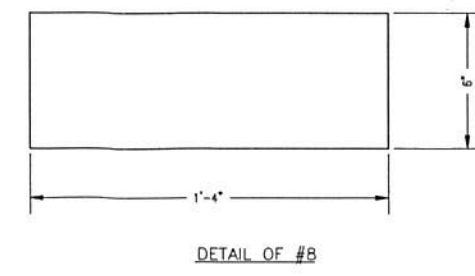
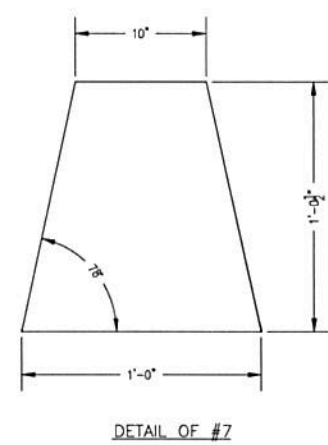
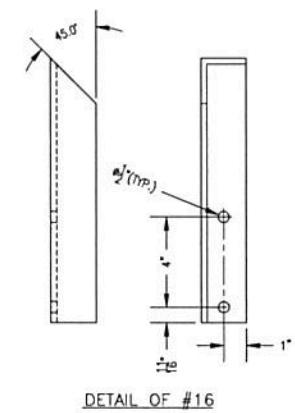
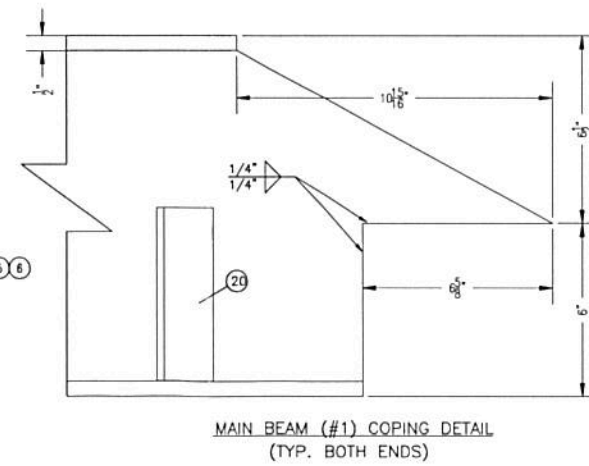
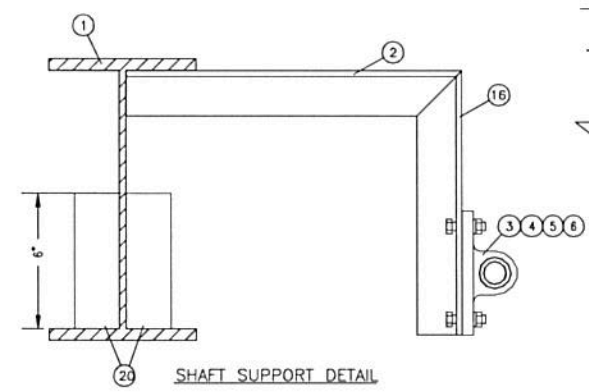
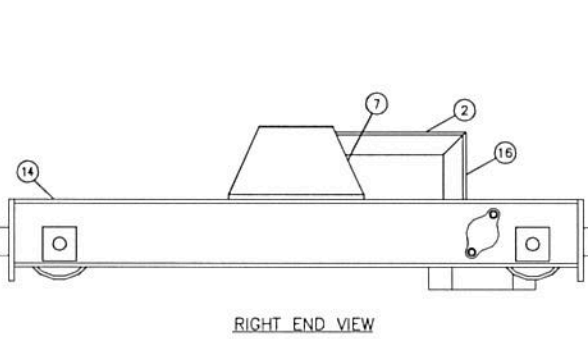
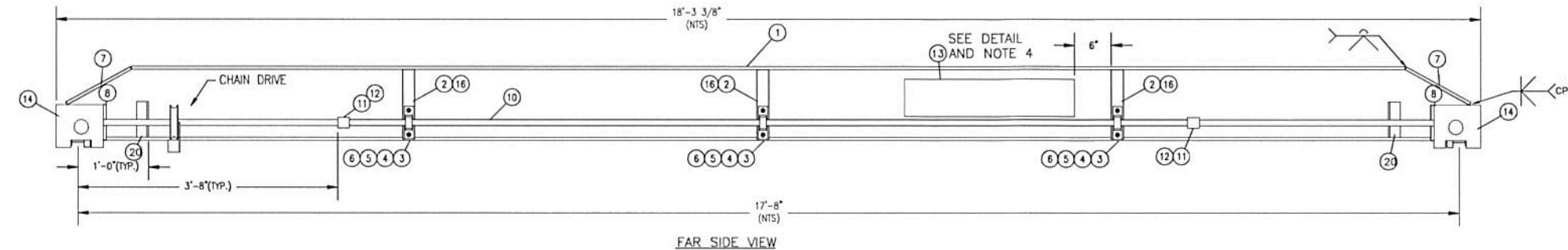
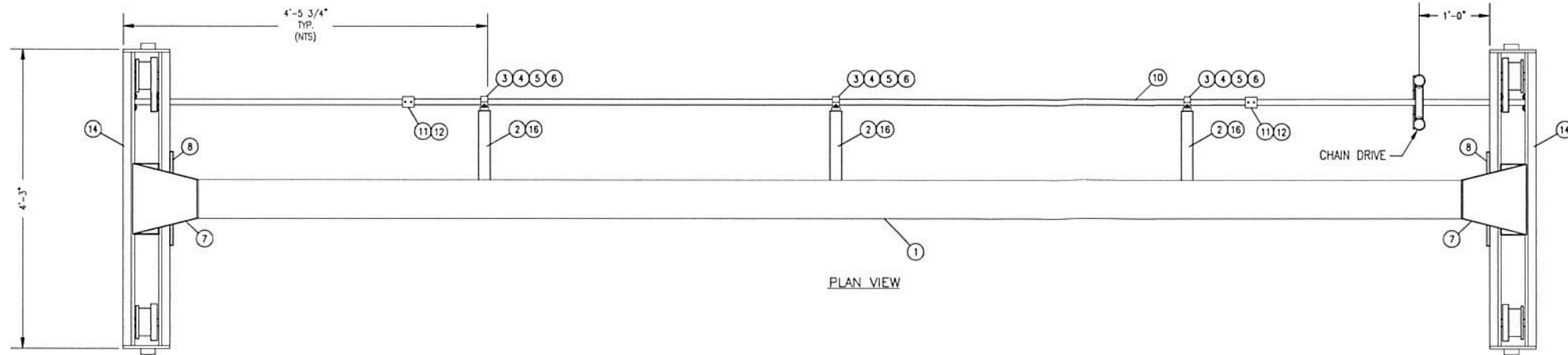
ELEVATION 'B-B'

NOTE:
ALL TAIL DIMENSIONS ARE
TAKEN FROM REFERENCE
POINT AT TOP OF SKID

				DATE	04/12/12		SCALE	1/2"=1'-0"		HUSKY OIL OPERATIONS CATERPILLAR G3516LE-AFRC ARIEL RG357M				ENERFLEX Calgary, Alberta, Canada				ELEVATION 'B-B'						
				DRAWN BY G.MACLEAN		CHECKED BY G.ZHANG		APPROVED BY S.PRITCHARD																
				PROJECT MANAGER S.PRITCHARD		PROJECT ENGINEER J.LIN																		
				CUST PO		N/A																		
1	FINAL AS-BUILT			09/11/12	GM	AZ																		
0	ISSUED FOR CONSTRUCTION			04/27/12	GM	JL																		
REV		DESCRIPTION			DATE	BY	APR	APEGGA PERMIT No: P8651		STEP CODE	198/298/490/511/591		WORK ORDER	12605		DWG NO	12605-201		SHT	3		REV	1	

FINAL
AS BUILT
NAME: G.MACLEAN DATE: 09/11/12

THE INFORMATION CONTAINED HEREIN IS THE CONFIDENTIAL PROPERTY OF ENERFLEX, LTD., AND IS NOT FOR PUBLICATION, AND NO PART THEREOF SHALL BE COPIED OR COMMUNICATED TO A THIRD PARTY WITHOUT AUTHORIZATION FROM ENERFLEX, LTD.

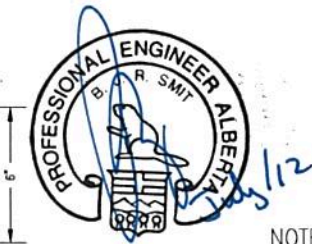


- NOTES
1. ALL WELDS TO BE 1/4" FILLET WELDS [UNO].
 2. WELDING AS PER CSA/CAN W59.1.
 3. DESIGNED TO CSA S16-01 AND CMAA SPEC. #74.
 4. STAMP SERIAL NO. (PROJECT NO.) ON DECAL.

MARK	PART NUMBER	QTY	LONG ANNOTATION	MATERIAL	LENGTH
1	034-HA-1200-0530	1	WIDE FLANGE, 12" X 5 1/2"	G40.2150W	17'-11 9/16"
2	005-HA-0200-0200-0025	3	ANGLE, 2" X 2", 1/4" THK	G40.2144W	1'-2 7/8"
3	000G-UCP205-16	3	PILLOW BLOCK, DODGE	-	-
4	402-FDCC-0037	6	LOCK WASHER, 3/8" STD. PLTD.	-	-
5	403-ACCC-0037	6	3/8" NUT, HEX HEAD, NC, GR. 8	-	-
6	401-ACCCD-0037-0125	6	3/8" BOLT, NC GR. 8	-	1 1/4"
7	040-HA-0050	2	PLATE, 1/2", SMOOTH X 1'-0 1/2" X 1'	G40.2144W	-
8	040-HA-0050	2	PLATE, 1/2", SMOOTH X 1'-4" X 6"	G40.2144W	-
9	-	-	-	-	-
10	012-HA-0100	1	ROUND BAR, 1"	G40.2144W	15'-6 1/2"
11	121-HRB-0100	2	3/4"- 3000 SQR'D COUPLING (DRILLED OUT TO 1")	SA-105-N	-
12	NPN	4	SPRING PIN- SLOTTED, 1/4" DIA	-	1 1/4"
13	DECAL-TESI-5 TONNE CRANE	2	ENERFLEX 5-TONNE/21-3/4 X 6, 300R CRANE (1 PER SIDE)	-	-
14	TESI-HYDR-ENDTRUCKS-STONNE	1	ENDTRUCKS, SET OF 2, 5 TONNE RATED	-	-
15	CLOV-74196	1	PAINT - NEW CAT YELLOW	-	4 LITERS
16	005-HA-0200-0200-0025	3	ANGLE, 2" X 2", 1/4" THK	G40.2144W	11 11/16"
17	TESI-HYDR-HCTST-10'-E-STONNE	1	TROLLEY, CHAIN DRIVE, 10' DROP, 5 TONNE RATED	-	-
18	TESI-HYDR-HBST-12'-STONNE	1	HGST, CHAIN, 12' DROP, 5 TONNE RATED	-	-
19	-	-	-	-	-
20	005-HA-0200-0200-0025	4	ANGLE IRON, 2" X 2" X 1/4"	G40.2144W	6"

ISSUED FOR CONSTRUCTION
NAME: G. MACLEAN DATE: APR 27/12

MANUFACTURED BY CAPACITY
ENERFLEX 5 TONNE
SERIAL NO. _____
DETAIL OF #13



					DATE 04/25/12		SCALE NTS		BRIDGE CRANE ASSEMBLY 5 TONNE CAPACITY 17'-8" WIDTH (CENTER TO CENTER RAILS)			ENERFLEX Calgary, Alberta, Canada		ENERFLEX LTD. STOCK BRIDGE CRANE 5-TONNE (11023 LBS)								
					DRAWN BY G. MACLEAN		CHECKED BY J. DOWSETT										APPROVED BY S. PRITCHARD					
					PROJECT MANAGER S. PRITCHARD		PROJECT ENGINEER J. LIN															
					CUST PO N/A																	
0 ISSUED FOR CONSTRUCTION					04/27/12		GM		JD													
REV DESCRIPTION					DATE		BY		APR		APEGGA PERMIT No: P8651		STEP CODE 414		WORK ORDER 12605		DWG NO 12605-BRIDGE CRANE		SHT 1		REV 0	

THE INFORMATION CONTAINED HEREIN IS THE CONFIDENTIAL PROPERTY OF ENERFLEX LTD. AND IS NOT FOR PUBLICATION, AND NO PART THEREOF SHALL BE COPIED OR COMMUNICATED TO A THIRD PARTY WITHOUT AUTHORIZATION FROM ENERFLEX LTD.

NOTES:

- EXTERIOR WALLS TO BE: 22GA TAN QC8315
- EXTERIOR ROOF TO BE: 22GA TAN QC8315
- EXTERIOR TRIM TO BE: 22GA METRO BROWN QC8228
- DOORS TO BE PAINTED: METRO BROWN QC8228
- INTERIOR LINER TO BE: 20GA 10% PERF. WHITE ALUM. OVER 3', 24GA WHITE ALUM. BELOW
- INSULATION IN WALLS: R-12 FIBERGLASS BATT
- INSULATION IN ROOF: R-20 FIBERGLASS BATT
- VAPOUR BARRIER TO BE: 6 MIL

SURFACE AREA = 2284 SQR/FT.
 APROX. TOTAL SHIPPING WEIGHT = 9600 Lbs. BUILDING ONLY

- 4 - 18" x 32" MANUALLY OPERABLE LOUVERS c/w BIRD SCREENS
- 3 - 16" VENTURI XP. WALL MOUNTED EXHAUST FAN 115/230v, 1ph, 60hz, 1/4hp (MIN 12 ACPH EACH) CLASS 1, DIV 1, GROUP C&D c/w BACKDRAFTDAMPER & WEATHER HOOD (TO BE INSTALLED)
- 2 - DOUBLE DOOR CANOPIES (SHIP LOOSE)
- 1 - 12" x 12" UTILITY HATCH
- CLIMASEAL FASTENERS THROUGHOUT
- P.ENG. STAMPED BUILDING DWGS. REQ'D. (ALBERTA REGISTERED)

- DESIGN LOADS: SLAVE LAKE AREA
- 1/50 SNOW = 1.9kPa
- 1/50 WIND = 0.37kPa

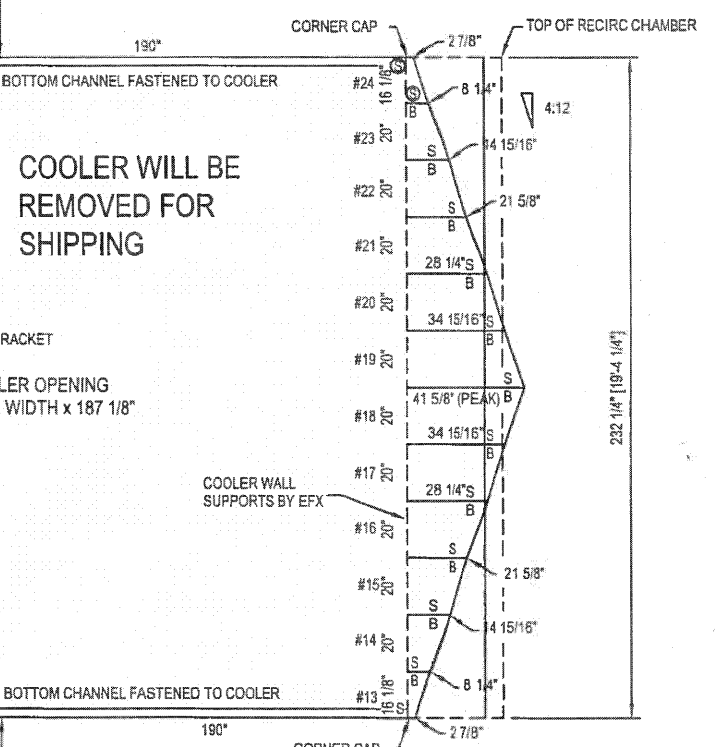
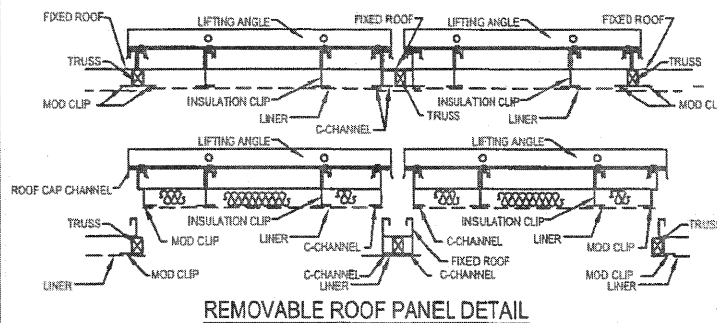
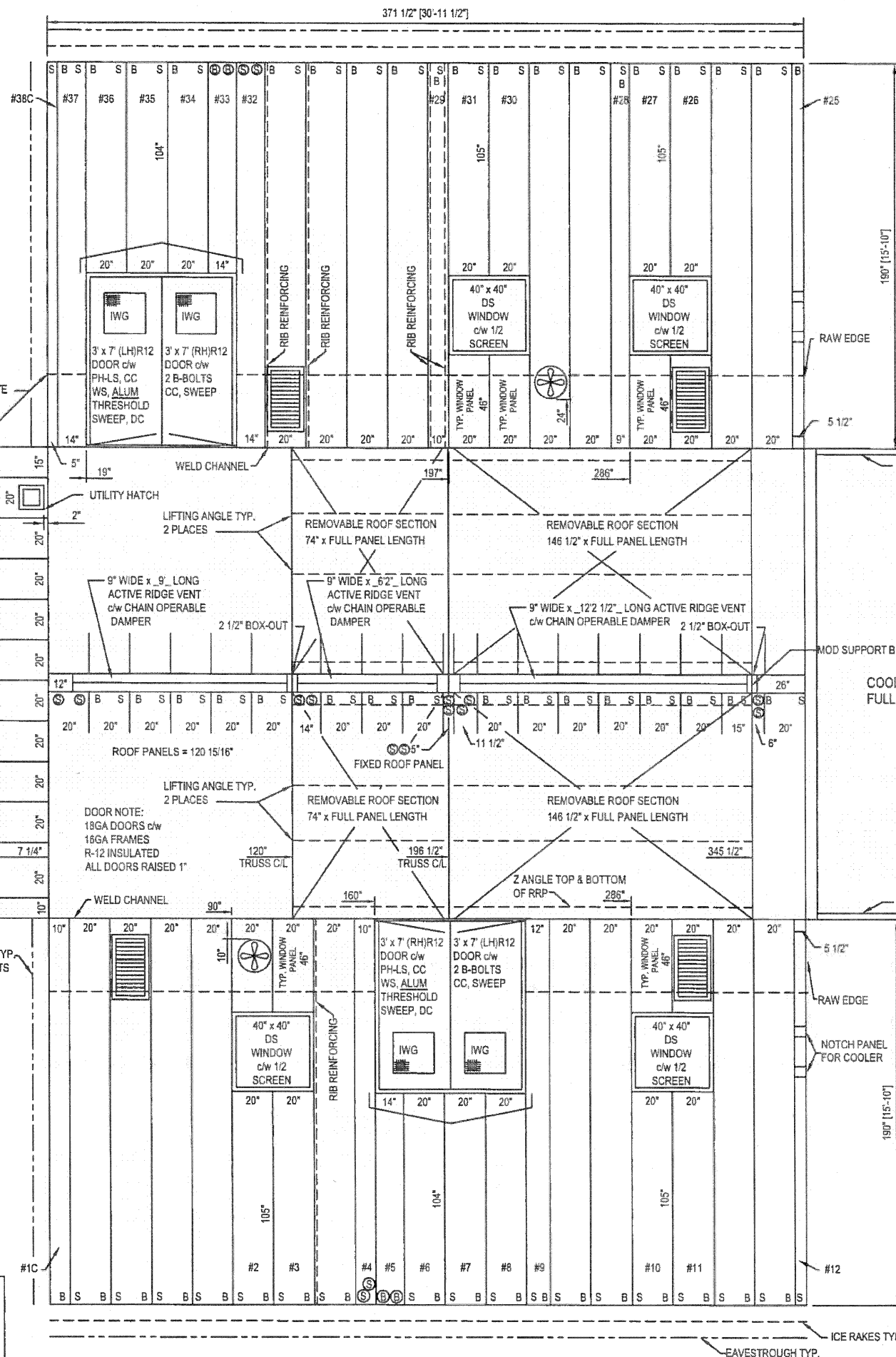
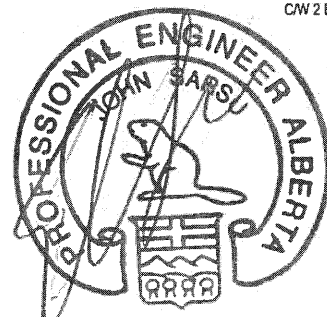
- APX. OVERALL BLDG. DIMENSIONS:
- WIDTH = 247"
- HEIGHT = 235" PLUS SKID

- NOTE:
- ALL DIMENSIONS ARE IN INCHES AND DECIMAL INCHES.
 - DO NOT SCALE DRAWINGS.
 - ALL DIMENSIONS TO WINDOWS AND DOORS ARE TO ROUGH OPENINGS.
 - CONFIRM LOCATION OF ANY LOUVERS AND OR FANS PRIOR TO INSTALLATION
 - CENTER BUILDING ON SKID
 - BUILDING INSTALLATION & ASSEMBLY SHALL BE AS PER WARWICK INSTALLATION MANUAL, AND DETAILS. WHERE THERE ARE CONFLICTS INFORMATION ON DRAWINGS SHALL BE TAKEN AS CORRECT

LEGEND

DS = DOUBLE GLAZED	CC = CHECK CHAIN
IWG = INDUSTRIAL WIRE GLASS	WS = WEATHERSTRIPPING
RH = RIGHT HAND SWING	DC = HYDRAULIC CLOSURE
LH = LEFT HAND SWING	SG = INTERIOR SLIDE GATE
PH = PANIC HARDWARE	GA = GAUGE
LS = LOCK CYLINDER	INS = INSULATED
R-12 = CORE INSULATION (R-12)	

NOTES:
 BUILDING IS DESIGNED TO COMPLY WITH N.B.C. 2005 AS PER THE WIND AND SNOW LOAD SPECIFIED ON THE DRAWING. OWNER SHALL CONTACT WARWICK INDUSTRIES, IF ACTUAL BUILDING LOCATION DIFFERS FROM THOSE SHOWN, IN ORDER TO VALIDATE THE STABILITY OF THE DESIGN FOR THE INTENDED LOCATION.



6999 84 ST SE,
 Calgary, Alberta T2C 4T6
 Telephone (403) 720-9425,
 Fax (403) 720-9426

Dwg Name	SHOP & FIELD PRINT			
Rev. No.	Description:	Date:	Drawn By:	Checked By:
0	FOR APPROVAL	7/5/2012	AD	AD
1	MOVED WINDOW FOR CONSTRUCTION	27/8/2012	AD	AD
2	-	-	-	-
3	-	-	-	-
4	-	-	-	-
CUSTOMER	ENERFLEX			
REFERENCE	12605 HUSKY OIL			
CUSTOMER P.O.#	MP552380			
LOCATION	ENERFLEX 10121 BARLOW TRAIL NE			
DATE REQUIRED	AUGUST 2012			
JOB NUMBER	W28557			
DRAWING #	W28557-01			

NOTES:

- EXTERIOR WALLS TO BE: 22GA TAN QC8315
- EXTERIOR ROOF TO BE: 22GA TAN QC8315
- EXTERIOR TRIM TO BE: 22GA METRO BROWN QC8228
- DOORS TO BE PAINTED: METRO BROWN QC8228
- INTERIOR LINER TO BE: 20GA 10% PERFORATED WHITE ALUM. OVER 3', 24GA WHITE ALUM BELOW
- INSULATION IN WALLS: R-12 FIBERGLASS BATT
- INSULATION IN ROOF: R-20 FIBERGLASS BATT
- VAPOUR BARRIER TO BE: 6 MIL

SURFACE AREA =	1219 SQR/FT.
APROX. TOTAL SHIPPING WEIGHT =	5200Lbs. BUILDING ONLY

- 2 - 18" x 32" MANUALLY OPERABLE LOUVERS c/w BIRD SCREENS
- 1 - 16" VENTURI XP. WALL MOUNTED EXHAUST FAN 115/230v, 1ph, 60hz, 1/4hp (36 ACPH) CLASS 1, DIV 1, GROUP C&D c/w BACKDRAFTDAMPER & WEATHER HOOD(TO BE INSTALLED)
- 2 - DOUBLE DOOR CANOPIES (SHIP LOOSE)
- CLIMASEAL FASTENERS THROUGHOUT
- P.ENG. STAMPED BUILDING DWGS. REQ'D. (ALBERTA REGISTERED)

- DESIGN LOADS: SLAVE LAKE AREA
- 1/50 SNOW = 1.9kPa
- 1/50 WIND = 0.37kPa

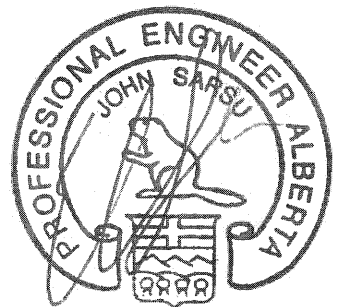
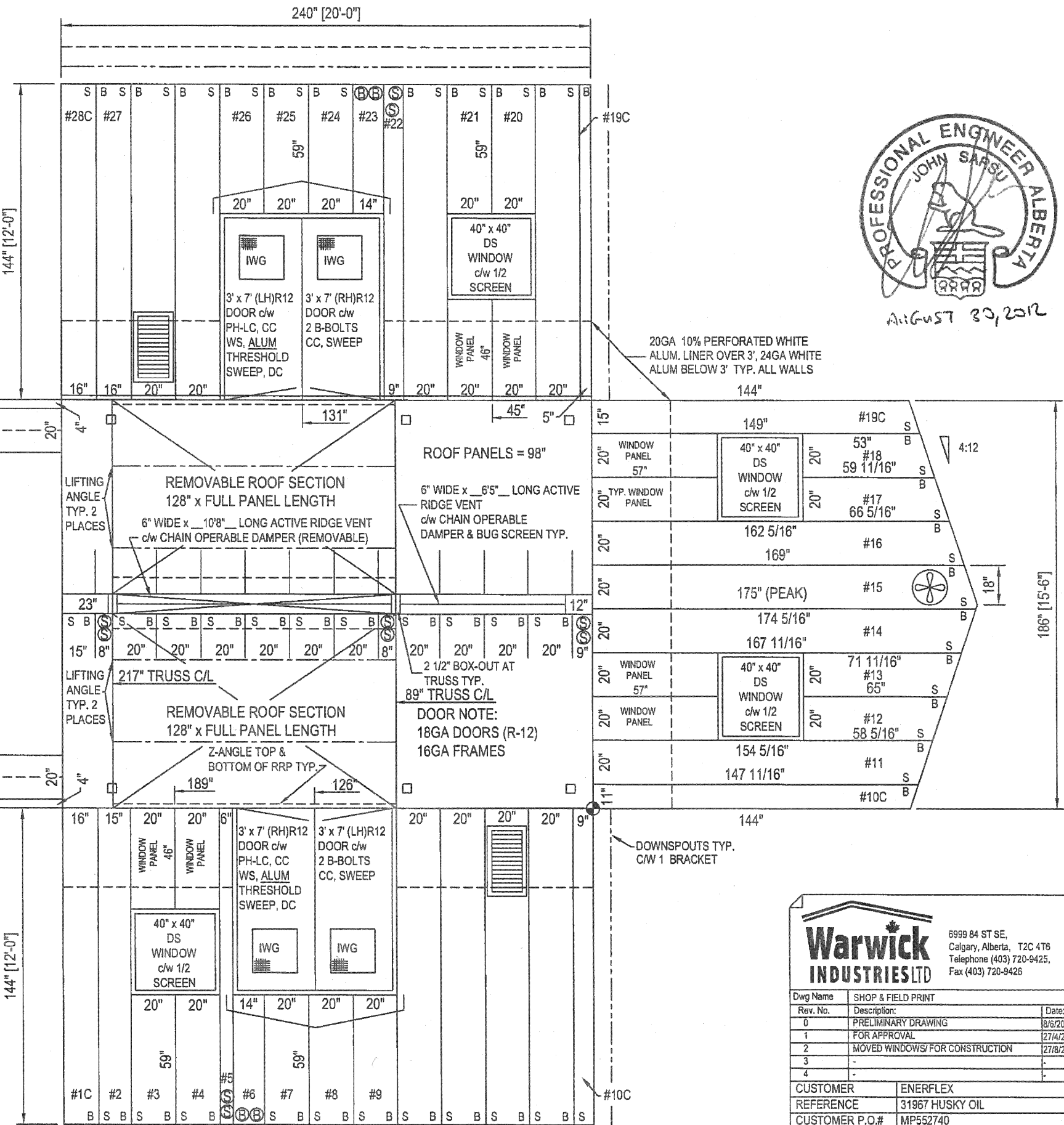
- APX. OVERALL BLDG. DIMENSIONS:
- WIDTH = 201"
- HEIGHT = 181" PLUS SKID

- NOTE:
- ALL DIMENSIONS ARE IN INCHES AND DECIMAL INCHES.
 - DO NOT SCALE DRAWINGS.
 - ALL DIMENSIONS TO WINDOWS AND DOORS ARE TO ROUGH OPENINGS.
 - CONFIRM LOCATION OF ANY LOUVERS AND OR FANS PRIOR TO INSTALLATION
 - CENTER BUILDING ON SKID
 - BUILDING INSTALLATION & ASSEMBLY SHALL BE AS PER WARWICK INSTALLATION MANUAL, AND DETAILS, WHERE THERE ARE CONFLICTS INFORMATION ON DRAWINGS SHALL BE TAKEN AS CORRECT

LEGEND	
DS = DOUBLE GLAZED	CC = CHECK CHAIN
IWG = INDUSTRIAL WIRE GLASS	WS = WEATHERSTRIPPING
RH = RIGHT HAND SWING	DC = HYDRAULIC CLOSURE
LH = LEFT HAND SWING	SG = INTERIOR SLIDE GATE
PH = PANIC HARDWARE	GA = GAUGE
LC = LOCK CYLINDER	INS = INSULATED
R-12 = CORE INSULATION (R-12)	LS = LOCK SET

NOTES:

BUILDING IS DESIGNED TO COMPLY WITH N.B.C. 2005 AS PER THE WIND AND SNOW LOAD SPECIFIED ON THE DRAWING. OWNER SHALL CONTACT WARWICK INDUSTRIES, IF ACTUAL BUILDING LOCATION DIFFERS FROM THOSE SHOWN, IN ORDER TO VALIDATE THE STABILITY OF THE DESIGN FOR THE INTENDED LOCATION.



AUGUST 30, 2012



6999 84 ST SE,
Calgary, Alberta, T2C 4T8
Telephone (403) 720-9425,
Fax (403) 720-9426

Dwg Name	SHOP & FIELD PRINT			
Rev. No.	Description	Date	Drawn By	Checked By
0	PRELIMINARY DRAWING	8/6/2010	AD	AD
1	FOR APPROVAL	27/4/2012	AD	AD
2	MOVED WINDOWS/ FOR CONSTRUCTION	27/8/2012	AD	AD
3	-	-	-	-
4	-	-	-	-
CUSTOMER		ENERFLEX		
REFERENCE		31967 HUSKY OIL		
CUSTOMER P.O.#		MP552740		
LOCATION		ENERFLEX 10121 BARLOW TRAIL NE		
DATE REQUIRED		AUGUST 2012		
JOB NUMBER		W28597		
DRAWING #		W28597-01		