

1

Recommended Spare Parts List **AC COMPRESSOR 7DB**

Date: 6/12/02
 Company: HUSKY OIL OPERATIONS
 Job#: 991B
 LSD: Morgan Site 2

QTY	PART#	DESCRIPTION	PRICE (EA)	ORDER
AC Compressor Model 7DB S/N 4002-79656-1				
1	16-136-760-802	*Rebuild Kit (Complete Seal)	\$ 2,946.25	
Premier Lubricator				
1	91200	Lubricator Pump	\$ 214.00	
Vessel				
4	FG312	Peco Single Stage Filter	\$ 33.00	
Belts				
3	BEBX100	Good Year Belts	\$ 44.00	
1	BEALINK	A-Premier Griplink Browning Belt	\$ 30.00	
Viking Gear Pump GX2 Series 115				
1	36500100780	Packing	\$ 32.00	

Please feel free to contact our area sales representative or service co-ordinator at the phone numbers listed below for further information on parts and or pricing or to look over our preventative maintenance program.

Extra parts not listed above can be added below.

QTY	PART#	DESCRIPTION	PRICE (EA)	ORDER

Service Co-Ordinator: Jim Bedford

Office #: 780-875-7638

TERMS: GST & PST EXTRA WHERE APPLICABLE
 PAYMENT NET 30 DAYS
 PRICES IN EFFECT FOR 60 DAYS
 F.O.B. WSS LLOYD

*Rebuild Kit consists of the following: 1 Blade Set, 2 Bearings, 2 O-Rings, 2 Cylinder Gaskets, 4 Seal Rings, 2 Bearing Shim Sets, 1 Seal Assy.



GE Power Systems
Oil & Gas

**RO-FLO
Compressor
Lubrication Recommendation Sheet**



A-C Compressor

Model: 7DB , Serial Number 4002-79655-1;79656-1 Proposal Number: 2 H 7427 Alt: 2
Sold To: Waterflood Service & Sales User Husky Oil Destination: Morgan Field, Alberta Canad
For Natural Gas, Sweet at 2.0 PSI Gauge and 60 F inlet conditions.
Discharge Pressure 80.0 PSI Gauge , Discharge Temp 306 F , Speed 1292 RPM.

The following are the lubrication recommendations for the above described unit:

Oil Type: B Multiplier: 1.2
Oil Viscosity Grade: SAE 50 (ISO VG 220)
Compressor Feed Rate: 3.00 Drops/min per feed (8000 drops/pint) wet type lubricator
5.00 Drops/min per feed (14000 drops/pint) dry type lubricator

Total Number of Feeds: 7
Total Oil Flow Rate: 0.14 Pints/hr
3.4 Pints/day

Suggested Brands: Amoco 300 Series;Chevron Industrial Oils EP;Chevron Delo 400 and Delo 100;Chevron RPM Heavy Duty Motor Oils;Citgo Citgard 500 or 600;Citgo Pacemaker Gas Engine Oil 700 or 1600*;Exxon XD-3*;Mobil Delvac 1200;Mobil Delvac 1300*;Phillips Super HDII;Phillips XDS*;Shell Rotella T;Shell Fire & Ice;Shell Mysella Oils;Texaco Geotex Gas Engine Oil;Texaco Ursa Extra Duty;
* Previously type E super-detergent oils meeting API classifications SC, SD, and CD with MS and DS additive packages.

Description: Detergent plus additive package: Detergent, Antioxidant, Rust Inhibitor, Antiwear Agent, Foam Inhibitor;
Meets API C or S category for four stroke engines (eg. CG-4) low to medium ash;
Viscosity Index.....90-105;
Pour Point.....10°F or lower;
Flash Point.....445°F or higher;
Fire Point.....490°F or higher

Customer Notes:

Double the oil feed rate for the initial break-in period of 300 hours. Criteria for correct oil flow rate is pints per hour. Drops per minute info is for initial startup only! Please verify correct "pints per hour" flowrate after 24-48 hours of operation.



GE Power Systems
Oil & Gas

**RO-FLO
Compressor
Specification Sheet**



A-C Compressor

Purchaser:	Waterflood Service & Sales Ltd.	User:	Husky Oil
Destination:	Morgan Field, Alberta Canada	Proposal No.	2 H 7427
Purch. Ref.	PO 21410-911	Date:	4/25/2002
Application:	Sweet Natural Gas	Serial Number:	4002-79655-1;79656-1

Process Requirements

Sizing Alternate:	2	
Gas Handled:	Natural Gas, Sweet	100.0 % Water Saturated
Elevation:	2500 Feet	
Atmospheric Pressure:	13.4 PSIA	
Required Flow Rate:	208.3 m3/hr	122.6 ACFM

Inlet Conditions

Pressure, at flange:	2.0 PSI	Gauge
Temperature:	60 F	
Specific Gravity:	0.67 (M.W.= 19.40)	
Ratio/specific heats Cp/Cv:	1.260	

Discharge Conditions

Pressure, at flange:	80.0 PSI	Gauge
----------------------	----------	-------

Expected Performance

Compressor Type:	Single Stage	Drive Type:	Direct	
Model:	7DB	Port Angle:	125 Degrees	
Speed:	1292 RPM			
Required Power:	36.4 HP	Gas Discharge Temperature:	306 F	
Actual Inlet Volume:	208.3 m3/hr	Cooling Water Temperature:	105 F	
	122.6 ACFM	Cooling Water Rqmts (15FΔ T)	3.7 GPM	
Discharge Pressure:	80.0 PSI	Gauge	Jacket Heat:	463 btu/min
Pressure Ratio:	6.06			

Warnings: Bearing Life is less than allowed minimum 30,000 hours.
Please Consult Factory

Guarantee Clause:

The Performance Guarantee on Volume and Brake Horsepower, or both (as indicated in first column) is subject to a tolerance of 5%.

Special Warranty Provision:

The Company shall not be responsible for damage caused by corrosion, carryover in the gas, or improper operation on the purchaser's part.

Verification of Conditions:

Expected Performance is based on the Process Requirements listed above. Customer is responsible for verifying the Process Requirements prior to accepting the Expected Performance.



GE Power Systems
Oil & Gas

A-C Compressor

A-C COMPRESSOR
3395 W. College Avenue
Appleton, WI 54914

Rotary Parts Sales

Phone: 920-380-8006 Fax: 920-380-8028

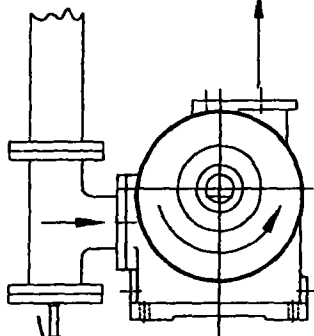
Spare Parts List for your *Ro-Flo* compressor.

Standard shipment lead time is 2-5 working days.

ITEM	DESCRIPTION	7D	QUANTITY
		A-C PART NO 16-155-021-000	
1	CYLINDER 125 DEG*	16-136-433-501	1
2	CYLINDER HEAD*	16-435-615-005	2
3	ROTOR SHAFT*	16-334-802-001	1
4	BEARING SPACER RING	16-133-926-001	2
5	ROTOR BLADES, SET OF 8	16-136-456-808	1
6	CYLINDER HEAD GASKET	16-235-937-001	2
7	BEARING SHIMS, SET	16-132-484-801	2
8	ROLLER BEARING	16-235-971-014	2
9	O-RING	16-235-921-002	2
10	SEAL RING	16-140-876-003	4
11	END COVER	16-235-927-007	1
Seal A	KP MECH. SEAL ASSEMBLY	16-242-085-505	1
	LOCKING SLEEVE	16-132-846-001	1
	SEAL REBUILD KIT	16-630-048-044	1
	REBUILD KIT #1	16-136-760-802	1
	REBUILD KIT #2	16-136-760-828	1
	MAINTENANCE KIT	16-136-760-852	1
Rebuild Kit #1 consists of the following: 1 Blade Set, 2 Bearings, 2 O-Rings, 2 Cylinder Gaskets, 4 Seal Rings, 2 Bearing Shim Sets, 1 Seal Assy.			
Rebuild Kit #2 consists of the following: 1 Blade Set, 2 Bearings, 2 O-Rings, 2 Cylinder Gaskets, 4 Seal Rings, 2 Bearing Shim Sets, 1 Seal Assy.			
Maintenance Kit consists of the following: 1 Blade Set, 2 Cylinder Gaskets, 2 Seal Rings			

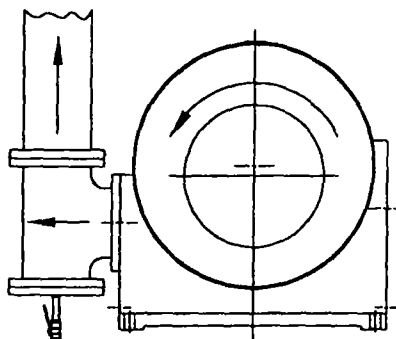
*Consult factory for shipment lead time.

See A-CCC Installation, Operation & Maintenance Manual, CCX0064, for recommended maintenance intervals.



MANUAL DRAIN VALVE(.5 MIN.)

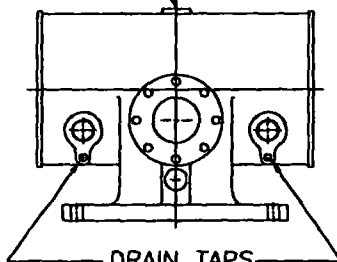
RO-FLO BOOSTER
MODELS 206 THRU 220



MANUAL DRAIN VALVE(.5 MIN.)

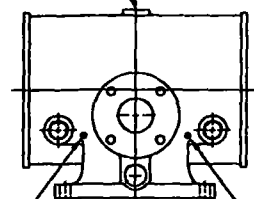
RO-FLO
MODELS 23C THRU 33D

11S THRU 19L



DRAIN TAPS
(USE EITHER)

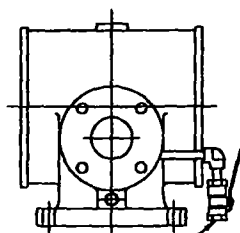
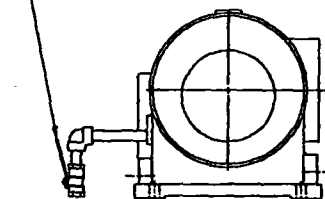
8D THRU 10G



DRAIN TAPS
(USE EITHER)

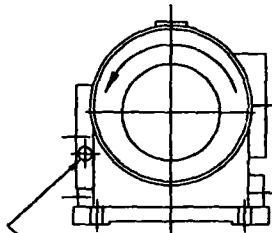
RO-FLO
MODELS 8D THRU 19L

MANUAL DRAIN VALVE(.5 MIN.)



MANUAL DRAIN VALVE(.25 MIN.)

RO-FLO
MODELS 4CC, 5CC & 7D



DRAIN TAP

01	11/18/86	MJS	MJS
REDRAWN			
05	8-19-81	PTB	PTB

CONFIDENTIAL-PROPERTY OF:



GE POWER SYSTEMS
Oil & Gas

A-C Compressor

DO NOT SCALE
CAD GENERATED
DRAWING DO
NOT MANUALLY
UPDATE.

THIRD ANGLE
PROJECTION

BREAK ALL SHARP CORNERS
AND REMOVE BURRS UNLESS
OTHERWISE SPECIFIED. STAMP
OR ETCH PART IDENTIFICATION
IN AREA MARKED

SIMILAR TO
MK.-

FILE NO. NONE

OR MJS 11-18-86

CK MJS 11-18-86

AP MJS 11-18-86

✓ MACHINED
SURFACE
TEXTURE

R	-
F	-

ANGULAR
TOLERANCE
±

UNLESS OTHERWISE
SPECIFIED

1-PLACE DEC.±.060
2-PLACE DEC.±.030
3-PLACE DEC.±.010

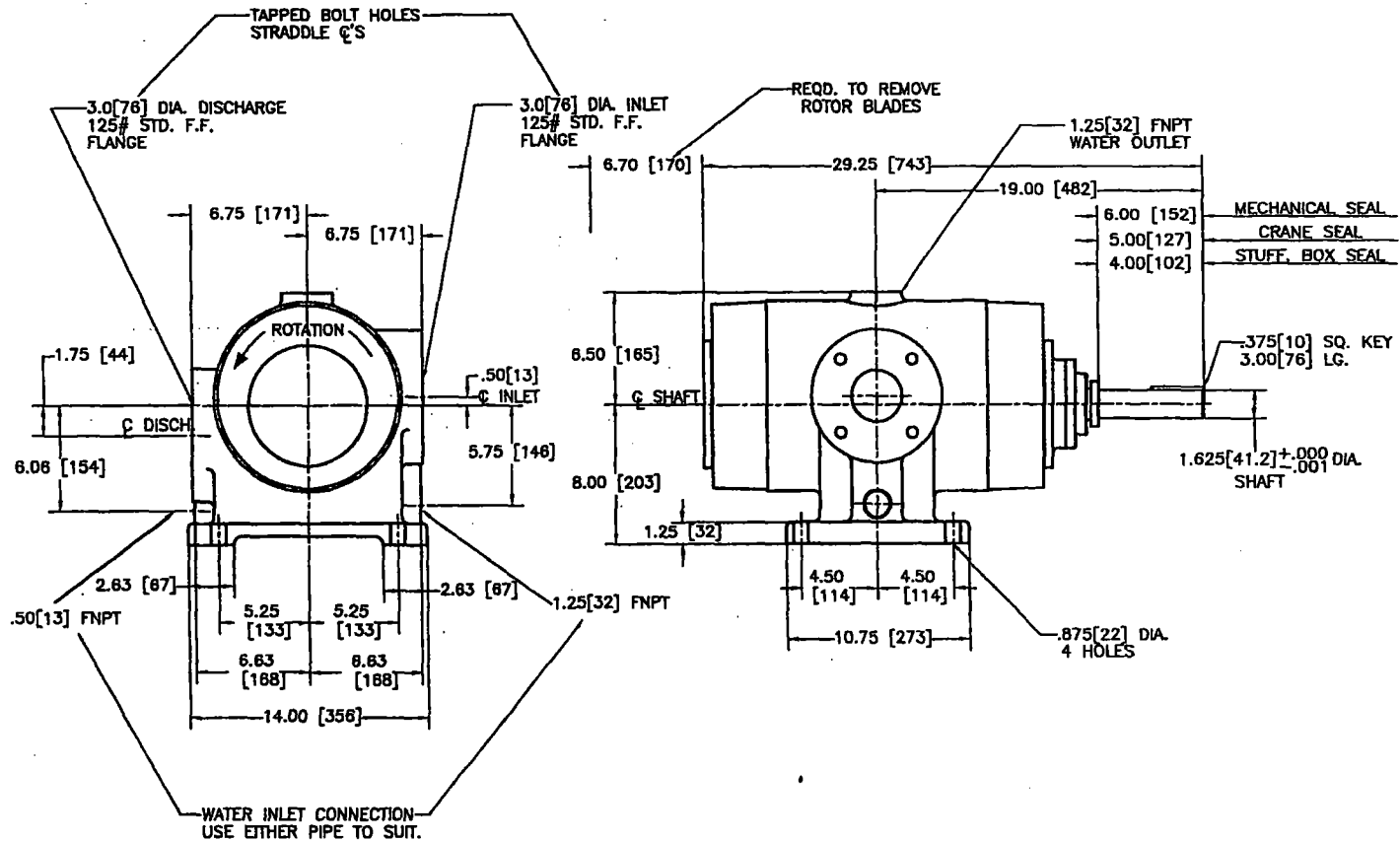
NAME
CYLINDERS

MAT'L
LIQUID DRAIN LOCATIONS

SCALE	SHEET	PART NO	ISSUE
NONE	1/1	16-123-646-401	05

ALL DIMENSIONS ARE IN INCHES[mm] AND SUBJECT
TO CHANGE WITHOUT PRIOR NOTICE

WEIGHT (APPROX)
7D RO-FLO 510#[231kg]



01	2-3-77	MJS	MJS
02	5-22-91	PTB	PTB
03	1-6-92	PTB	PTB
04	1-7-98	THS	RJP



GE POWER SYSTEMS
Oil & Gas

A-C Compressor

CONFIDENTIAL-PROPERTY OF:

DO NOT SCALE
C/D GENERATED
DRAWING DO
NOT MANUALLY
UPDATE.
BREAK ALL SHARP CORNERS
AND REMOVE BURRS UNLESS
OTHERWISE SPECIFIED. STAMP
OR ETCH PART IDENTIFICATION
IN AREA MARKED

M.K. -
SIMILAR TO

FILE NO. NONE

DR MJS 2-3-77

CK MJS 2-3-77

AP MJS 2-3-77

NAME	WGT.	ANGULAR TOLERANCE	UNLESS OTHERWISE SPECIFIED
MACHINED SURFACE TEXTURE	R	±	1-PLACE DEC. ±.060 2-PLACE DEC. ±.030 3-PLACE DEC. ±.010

STANDARD DIMENSIONS
FOR 7D RO-FLO
RIGHT HAND

MATL

SCALE SHEET PART NO

NONE 1/1 16-123-633-402

ISSUE 04

CUSTOMER'S NOTES




REFER TO THE CONTRACT PURCHASE ORDER TO DETERMINE THE RATED OPERATING CONDITIONS AND THE ACCESSORIES WHICH WILL BE FURNISHED WITH THE SINGLE STAGE RO-FLO COMPRESSOR. ALL AIR (OR GAS) AND WATER PIPING TO AND FROM THE COMPRESSOR MUST BE FURNISHED BY THE CUSTOMER. CONNECTIONS ARE PROVIDED ON DISCHARGE SIDE OF MODELS 4CC THRU 19L CYLINDERS TO DRAIN CONDENSED LIQUIDS PRIOR TO START-UP. CUSTOMER TO PROVIDE LIQUID DRAIN IN INLET PIPING FOR BOOSTER MODELS 206 THRU 220 AND IN DISCHARGE PIPING FOR MODELS 23C THRU 33D (SEE DRG #16-123-646-401).

LUBE SYSTEM TUBING AND FITTINGS WILL BE FURNISHED ONLY WHEN A LUBRICATOR IS ORDERED. LUBRICATOR, TUBING AND FITTINGS WILL BE FACTORY INSTALLED ONLY WHEN A BEDPLATE IS ORDERED WITH THE COMPRESSOR.

THE DRIVE COUPLING (IF FURNISHED) WAS MOUNTED AND ALIGNED AT THE FACTORY.

ANY BEDPLATE, NO MATTER HOW RIGIDLY CONSTRUCTED, CAN BE SPRUNG IN SHIPMENT, DISTORTED BY AN UNEVEN FOUNDATION OR UNEVEN TIGHTENING OF THE FOUNDATION BOLTS. THEREFORE, IF DIRECT COUPLED, THE DRIVER MUST BE ACCURATELY ALIGNED TO THE COMPRESSOR IN THE FIELD (REFER TO OUTLINE DRAWING).

BEFORE INSTALLING THE COMPRESSOR, REFER TO THE SINGLE STAGE INSTRUCTION BOOK NO. CCX0064 FOR COMPLETE INSTALLATION, OPERATION AND MAINTENANCE INSTRUCTIONS.

01	03-01-60	MJS	MJS	CONFIDENTIAL-PROPERTY OF:			DO NOT SCALE CAD GENERATED DRAWING DO NOT MANUALLY UPDATE.	<input checked="" type="checkbox"/>	WGT. R - F -	ANGULAR TOLERANCE ±	UNLESS OTHERWISE SPECIFIED 1-PLACE DEC.±.060 2-PLACE DEC.±.030 3-PLACE DEC.±.010	
NEW BORDER						BREAK ALL SHARP CORNERS AND REMOVE BURRS UNLESS OTHERWISE SPECIFIED. STAMP OR ETCH PART IDENTIFICATION IN AREA MARKED 		NAME CUSTOMER'S NOTES FOR				
09	09-20-99	THS	MJV			SIMILAR TO MK.-		SINGLE STAGE ROTARY COMPRESSOR				
				FILE NO. NONE		DR MJS 03-01-60		MAT'L				
				CK MJS 03-01-60		AP MJS 03-01-60		SCALE NONE		SHEET 1/1	PART NO 16-123-475-401	ISSUE 09
				A-C Compressor								