

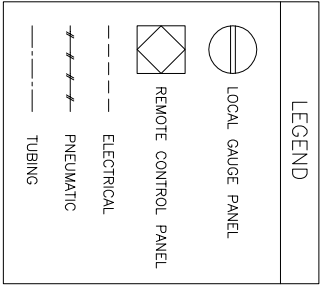
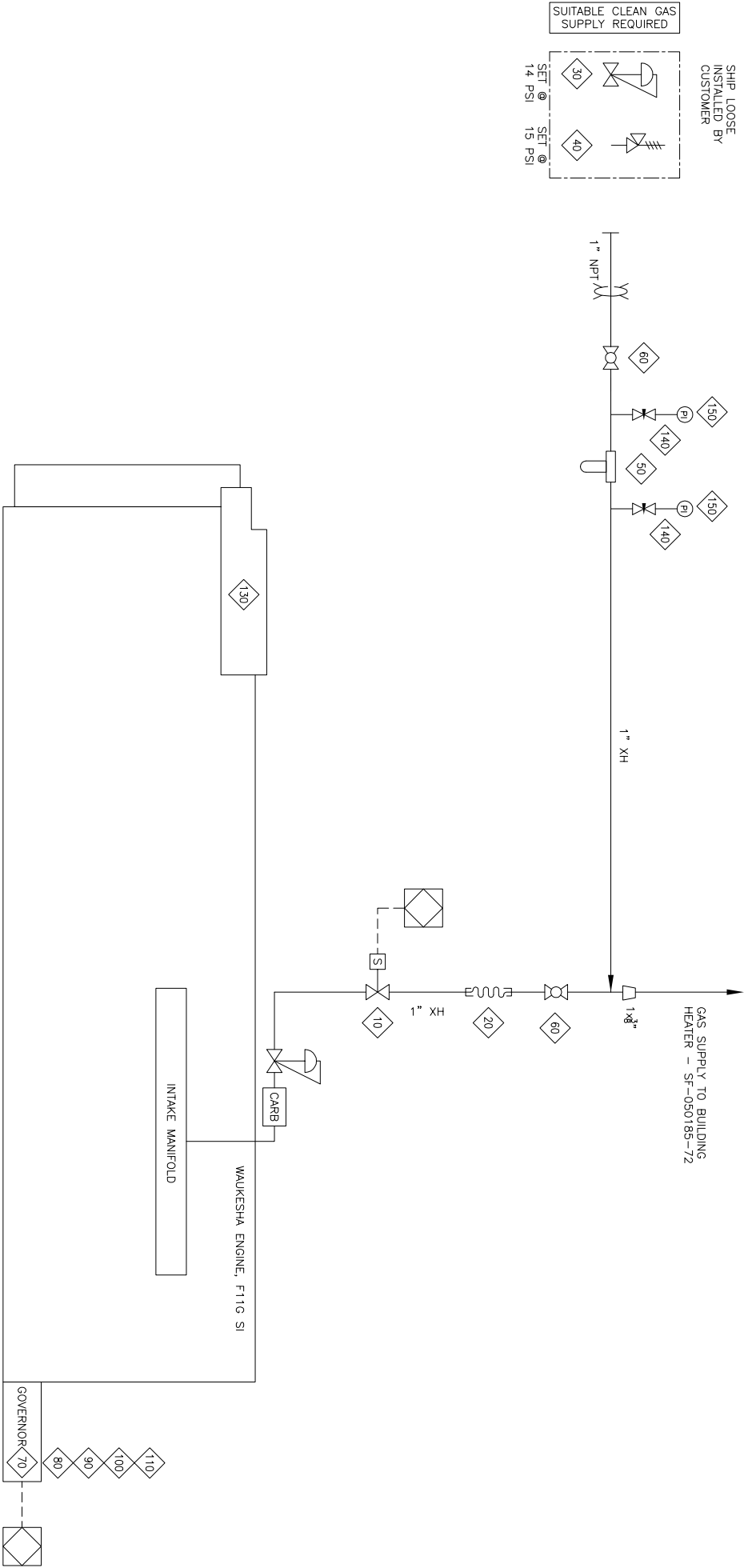
BILL OF MATERIAL

ITEM QTY	PART #	DESCRIPTION
10	1	NPV
20	1	VALVE, SOLENOID, 2-WAY, 24VDC, ALUMINUM, 1" [ASCO, 8215B50-24V]
30	1	HOSE, BRADED STEEL, 1" NPT/M ENDS X 12" LONG
40	1	REGULATOR, 1" NPT, M, 3/16" OR, SET @ 12 PSIG [FISHER, 627-491]
50	1	VALVE, PRV, 1" NPT, M, 5-35 SPR RING, SET @ 15 PSIG [FISHER, 1805-12X1]
60	2	FILTER, FUEL, 1" NPT C/W ELEMENTS (HEADLINE 3804-S453P)
70	1	VALVE, BALL, 1" NPT, 2000# WOG, RP, 316SS, NACE C/W [NANCO, C1-R155204]
80	1	CONTROLLER, GOVERNOR MODULE, EPG 4024 (WOODWARD 8290-147)
90	1	ACTUATOR, GOVERNOR 4024 ELECTRIC (WOODWARD 8256-060) SUPPLIED BY WAIKESHA
100	1	AURORA ROD END
110	1	GOVERNOR, CABLE HARNESS
120	1	GOVERNOR, LINKAGE ROD 1/4" X 18"
130	1	WAIKESHA ELECTRIC STARTER (DELO REMY)
140	2	VALVE, NEEDLE 1/4" FNPT x 1/4" FNPT
150	2	GAUGE, PRESSURE BW 2 1/2" LF 0-30 PSIG, 1/4" NPT (MKA, 233.53)
		*****
		BILL OF MATERIAL: M 110076-4 : FUEL/START GAS
		DATE-TIME EXPORTED: N/A

GEN-#1

ENGINE SPEC: C-14483 S/N 8703109

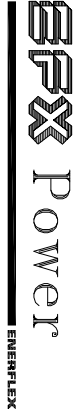
GEN S/N: LM-246243-0305



NOTE:  
1. FUEL GAS PIPING TO BE  
THREADED w/ 2000# FITTINGS.  
2. EACH ENGINE TO HAVE SEPERATE  
FUEL GAS INLET CONNECTIONS

2	AS BUILT	05/06/01	RA		
1	ADD ITEMS 140 & 150	05/03/24	RA		
0	ISSUED FOR CONSTRUCTION	05/03/22	RA		
A	ISSUED FOR APPROVAL	05/03/11	RA		
REV	DESCRIPTION	DATE	DRAWN BY	CHECKED BY	

REVISIONS



4700 47. Street SE Coligny AB Canada T2B 3R1 Canada Tel. +1.403.236.6800 Fax +1.403.279.0367  
www.enerflex.com

ENGINEERING RECORD	CONSULTANT
--------------------	------------

DRAWN BY R.Austin	DATE 05/03/11	TITLE FUEL GAS - WAIKESHA F11GSI DUAL 150 kW GENERATOR PACKAGE EXXON MOBIL c/o ENERFLEX LEASING SPOTTER CENTRAL DEHY
CHNO BY		
ENGINEER		

SHEET 1 of 2	SCALE N.T.S.	MATERIAL #: DWG NO SF-050185-22	REV 2
JOB NUMBER 050185			

© 2005 ENERFLEX Systems Ltd.  
REPRODUCTION OF ANY PORTION OF THESE MATERIALS WITHOUT THE EXPRESS WRITTEN CONSENT OF ENERFLEX SYSTEMS LTD. IS STRICTLY PROHIBITED. THESE MATERIALS SHALL NOT BE USED FOR ANY PURPOSE OTHER THAN THE REPAIR AND MAINTENANCE OF THE PRODUCTS TO WHICH THEY RELATE.