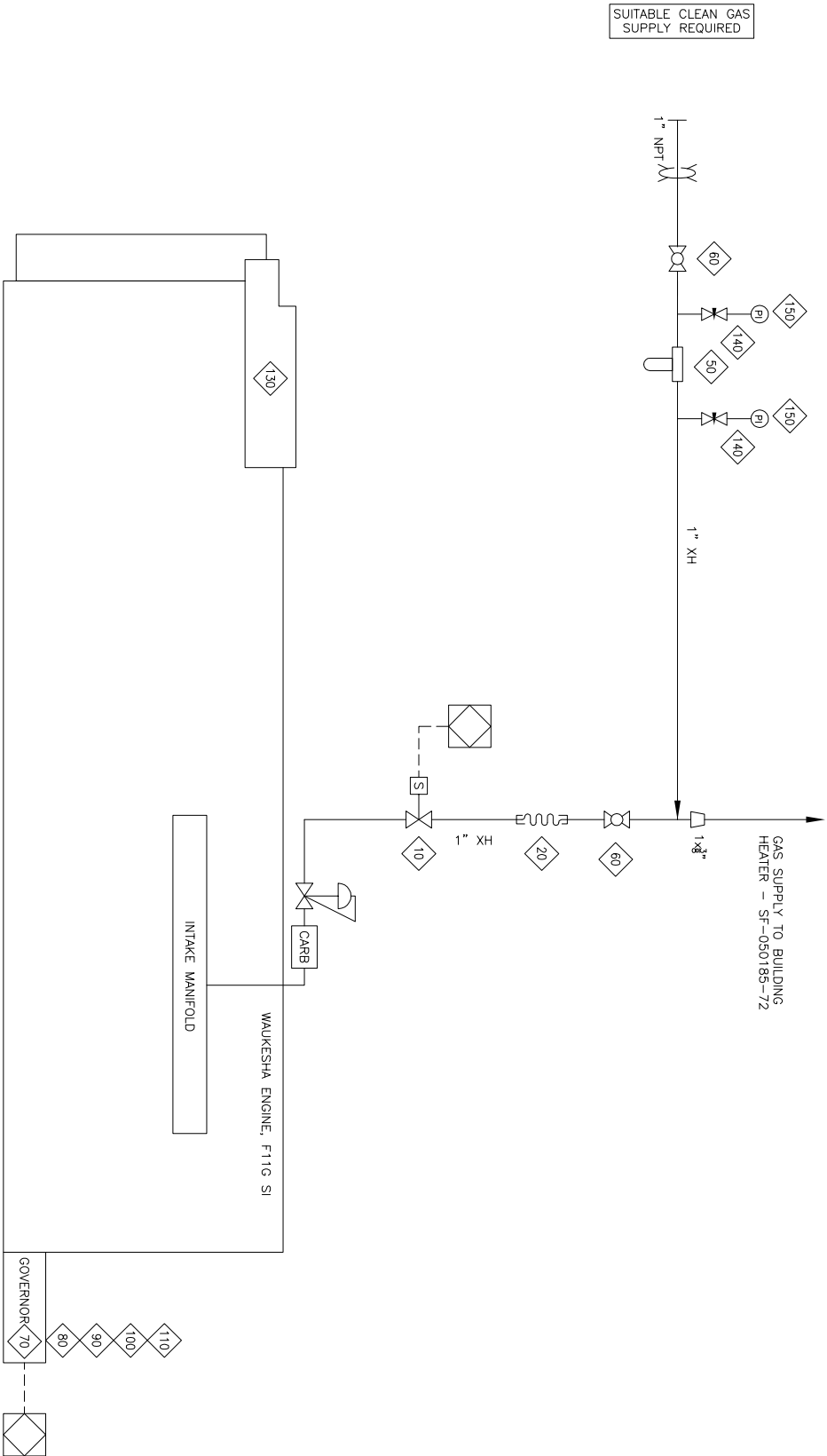


GEN-#2

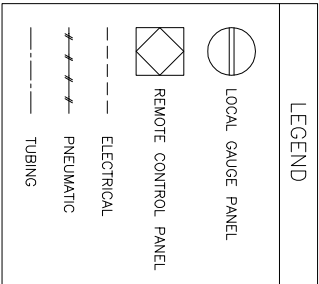
ENGINE SPEC: C-14484 S/N 8703103
GEN S/N: LM-246008-0305



BILL OF MATERIAL

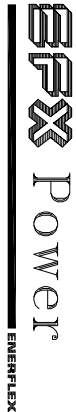
ITEM QTY	PART #	DESCRIPTION
10	1	NPV
20	1	VALVE, SOLENOID, 2-WAY, 24VDC, ALUMINUM, 1" (ASCO, 8215B50-24V)
50	1	HOSE, BRAIDED STEEL, 1" NPTM ENDS X 12" LONG
50	1	113056
60	2	102937
70	1	100327
80	1	INCL
90	1	110141
100	1	100894
110	1	100331
130	1	INCL
140	2	108006
150	2	107902

BILL OF MATERIAL: M 110076-4 : FUEL/START GAS		
DATE-TIME EXPORTED: N/A		



- NOTE:
- FUEL GAS PIPING TO BE THREADED w/ 2000# FITTINGS.
 - EACH ENGINE TO HAVE SEPERATE FUEL GAS INLET CONNECTIONS

2	AS BUILT	05/06/01	RA		
1	ADD ITEMS 140 & 150	05/03/24	RA		
0	ISSUED FOR CONSTRUCTION	05/03/22	RA		
A	ISSUED FOR APPROVAL	05/03/11	RA		
REV	DESCRIPTION	DATE	DRAWN BY	CHECKED BY	
REVISIONS					



4700 47. Street SE Coligny AB Canada T2B 3R1 Canada Tel. +1.403.236.6800 Fax +1.403.279.0367
www.enerflex.com

ENGINEERING RECORD		LSP # 03-36-56-22 WSM	CONSULTANT
DRAWN BY	DATE	TITLE FUEL GAS – WAUKESHA F11GSI DUAL 150 kW GENERATOR PACKAGE EXXON MOBIL c/o ENERFLEX LEASING SPOTTER CENTRAL DEHY	
RAustin	05/03/11		
CHND BY			
ENGINEER		SCALE	MATERIAL #:
		N.T.S.	DWG NO SF-050185-22
SHEET 2 of 2			REV
JOB NUMBER 050185			2

© 2005 ENERFLEX Systems Ltd.
REPRODUCTION OF ANY PORTION OF THESE MATERIALS WITHOUT THE EXPRESS WRITTEN CONSENT OF ENERFLEX SYSTEMS LTD. IS STRICTLY PROHIBITED.
THESE MATERIALS SHALL NOT BE USED FOR ANY PURPOSE OTHER THAN THE REPAIR AND MAINTENANCE OF THE PRODUCTS TO WHICH THEY RELATE.