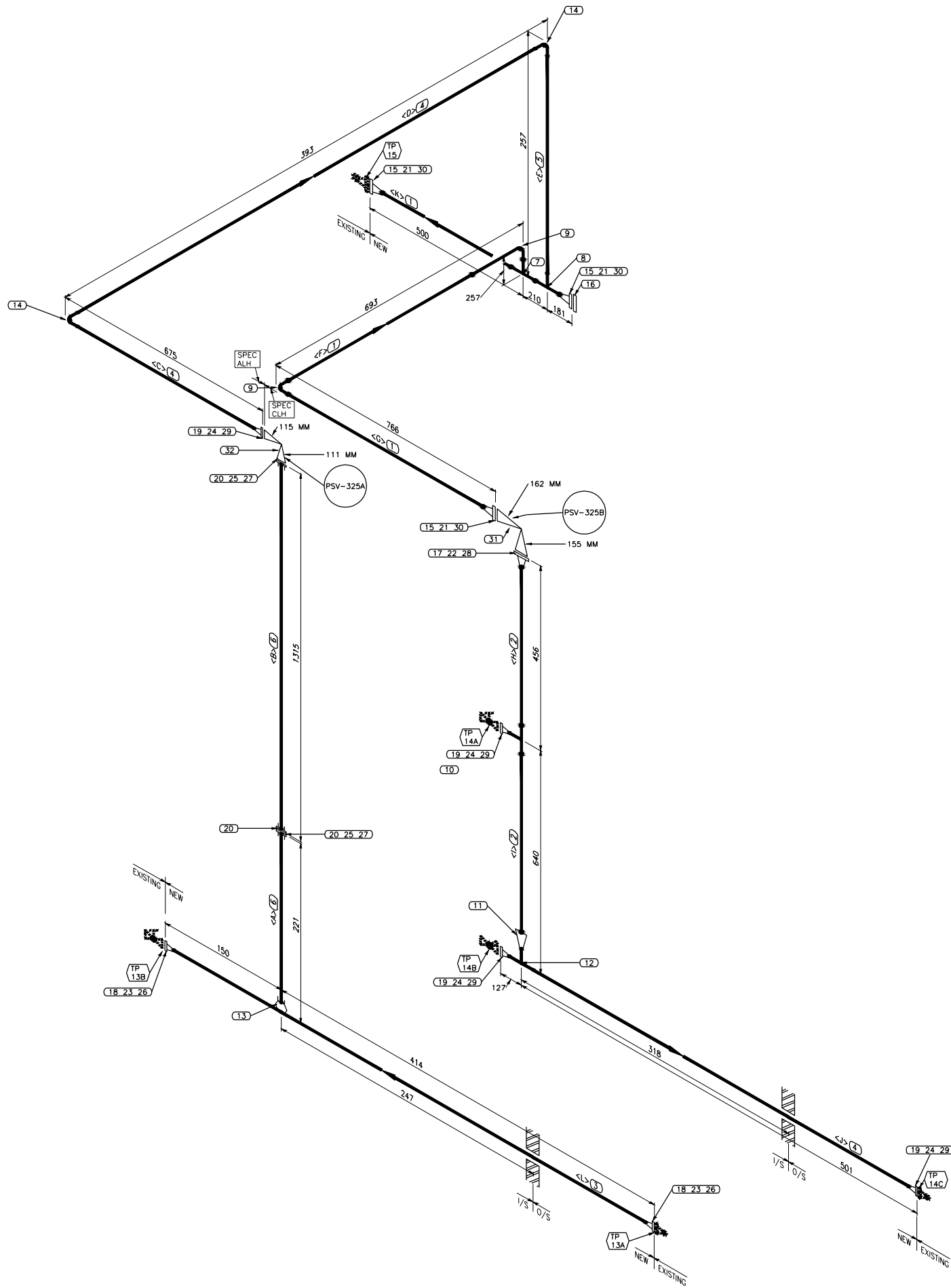


A
B
C
D
E



FABRICATION MATERIALS					
MARK	QTY	SIZE	DESCRIPTION	TAG	WEIGHT
PIPE					
1	1245	MM	4	PIPE SCH STD BE ASTM A333 GRADE 6 SMLS ASME B36.10M	20.0
2	701	MM	3	PIPE SCH STD BE ASTM A333 GRADE 6 SMLS ASME B36.10M	7.9
3	404	MM	2	PIPE SCH 80 BE ASTM A333 GRADE 6 SMLS ASME B36.10M	3.1
4	1151	MM	2	PIPE SCH STD BE ASTM A333 GRADE 6 SMLS ASME B36.10M	6.3
5	93	MM	2	PIPE SCH STD BE ASTM A333 GRADE 6 SMLS ASME B36.10M	0.5
6	1424	MM	1	PIPE SCH 80 PE ASTM A333 GRADE 6 SMLS ASME B36.10M	4.6
FITTINGS					
7	1	4X4		TEE SCH STD BE ASTM A420 GRADE WPL6 ASME B16.9	4.0
8	1	4X2		TEE REDUCING SCH STD X SCH STD BE ASTM A420 GRADE WPL6 ASME B16.9	3.5
9	2	4		ELL 90° LR SCH STD BE ASTM A420 GRADE WPL6 ASME B16.9	7.7
10	1	3X2		TEE REDUCING SCH STD X SCH STD BE ASTM A420 GRADE WPL6 ASME B16.9	2.1
11	1	3X2		REDUCER CONC SCH STD X SCH STD BE ASTM A420 GRADE WPL6 ASME B16.9	0.8
12	1	2X2		TEE SCH STD BE ASTM A420 GRADE WPL6 ASME B16.9	0.9
13	1	2X1		SOCKET CLASS 3000 SW ASTM A350 GRADE LF2 CL.1 MSS SP-97	0.3
14	2	2		ELL 90° LR SCH STD BE ASTM A420 GRADE WPL6 ASME B16.9	1.3
FLANGES					
15	3	4		FLG 150# RF SCH STD WN ASTM A350 GRADE LF2 CL.1 ASME B16.5	20.4
16	1	4		BLIND FLG 150# RF ASTM A350 GRADE LF2 CL.1 ASME B16.5	7.8
17	1	3		FLG 150# RF SCH STD WN ASTM A350 GRADE LF2 CL.1 ASME B16.5	5.1
18	2	2		FLG 600# RF SCH 80 WN ASTM A350 GRADE LF2 CL.1 ASME B16.5	10.9
19	4	2		FLG 150# RF SCH STD WN ASTM A350 GRADE LF2 CL.1 ASME B16.5	10.9
20	3	1		FLG 600# RF SCH 80 SW ASTM A350 GRADE LF2 CL.1 ASME B16.5	5.5
GASKETS					
21	3	4		GASKET 150# SPWD 304SS, FLEXIBLE GRAPHITE FILLER, C.S. CENTERING RING, ASME B16.20 - (INNER RING NOT REQUIRED)	3.0
22	1	3		GASKET 150# SPWD 304SS, FLEXIBLE GRAPHITE FILLER, C.S. CENTERING RING, ASME B16.20 - (INNER RING NOT REQUIRED)	1.0
23	2	2		GASKET 600# SPWD 304SS, FLEXIBLE GRAPHITE FILLER, C.S. CENTERING RING, ASME B16.20 - (INNER RING NOT REQUIRED)	2.0
24	4	2		GASKET 150# SPWD 304SS, FLEXIBLE GRAPHITE FILLER, C.S. CENTERING RING, ASME B16.20 - (INNER RING NOT REQUIRED)	4.0
25	2	1		GASKET 600# SPWD 304SS, FLEXIBLE GRAPHITE FILLER, C.S. CENTERING RING, ASME B16.20 - (INNER RING NOT REQUIRED)	2.0
BOLTS					
26	2	5/8X4 1/2	(8)	STUD BOLT ASTM A193 GRADE B7 W/A194 2H NUTS ASME B18.2.1 AND ASME B18.2.2	2.0
27	2	5/8X3 3/4	(4)	STUD BOLT ASTM A193 GRADE B7 W/A194 2H NUTS ASME B18.2.1 AND ASME B18.2.2	2.0
28	1	5/8X3 3/4	(4)	STUD BOLT ASTM A193 GRADE B7 W/A194 2H NUTS ASME B18.2.1 AND ASME B18.2.2	1.0
29	4	5/8X3 1/2	(4)	STUD BOLT ASTM A193 GRADE B7 W/A194 2H NUTS ASME B18.2.1 AND ASME B18.2.2	4.0
30	3	5/8X3 3/4	(8)	STUD BOLT ASTM A193 GRADE B7 W/A194 2H NUTS ASME B18.2.1 AND ASME B18.2.2	3.0
VALVES					
31	1	(INCH) 4X3		RELIEF VALVE CLASS 150 X CLASS 150 RF PSV-325B	-
32	1	(INCH) 2X1		RELIEF VALVE CLASS 600 X CLASS 150 RF PSV-325A	-
TOTAL FABRICATION WEIGHT (kg)					146.8
TOTAL WEIGHT UNLISTED ITEMS					92.1
TOTAL WEIGHT - THIS DRG					238.9


CUT PIPE LENGTH		
PIECE NUM	LENGTH (MM)	SIZE (INCH)
<A>	150	1
	1274	1
<C>	536	2
<D>	241	2
<E>	93	2
<F>	389	4
<G>	537	4
<H>	300	3
<I>	401	3
<J>	374	2
<K>	319	4
<L>	404	2

FIELD CONFIRM ALL DIMENSIONS PRIOR TO FABRICATION

DESIGN INFORMATION: (REFER TO PIPING SPEC FOR NOTE DESCRIPTIONS) ISSUE: 05/06/2015 (REV 7)		LINE SPEC: ALH	
SERVICE: GENERAL PROCESS (low temp, sweet service)		CLASS: 150	
TEMPERATURE: -45 TO 149°C (-50 TO 300°F)	CODE: ASME B31.3	RATING: ASME B16.5 MG: 1.1	
DESIGN PRESSURE: 1960 kPag (285 PSIG) @ 38°C (100°F) DESIGN PRESSURE DERATES WITH TEMPERATURE PER RATINGS OF ASME B16.5. SEE TABLE AND GRAPH	TEST PRESSURE: 2940 kPag	CA: 1.6mm (0.0625")	
MATERIAL & TESTING: HUSKY SPEC PS-MW-01 WELDING AND PS-PF-04 ASME B31.3 PIPING EXAMINATION AND TESTING			
DESIGN INFORMATION: (REFER TO PIPING SPEC FOR NOTE DESCRIPTIONS) ISSUE: 05/06/2015 (REV 7)		LINE SPEC: CLH	
SERVICE: GENERAL PROCESS (low temp, sweet service)		CLASS: 600	
TEMPERATURE: -45 TO 149°C (-50 TO 300°F)	CODE: ASME B31.3	RATING: ASME B16.5 MG: 1.1	
DESIGN PRESSURE: 15320 kPag (2220 PSIG) @ 38°C (100°F) DESIGN PRESSURE DERATES WITH TEMPERATURE PER RATINGS OF ASME B16.5. SEE TABLE AND GRAPH	TEST PRESSURE: 15315 kPag	CA: 1.6mm (0.0625")	
MATERIAL & TESTING: HUSKY SPEC PS-MW-01 WELDING AND PS-PF-04 ASME B31.3 PIPING EXAMINATION AND TESTING			

NOTES

- ALL DIMENSIONS ARE IN MILLIMETERS UNLESS NOTED OTHERWISE.
- DIMENSIONS ARE APPROXIMATE. FABRICATION CONTRACTOR TO CONFIRM AND ALLOW FOR IN-PLACE FIT-UP. CLEARANCE BETWEEN EXISTING PIPING, EQUIPMENT AND STRUCTURES SHOULD BE VERIFIED PRIOR TO CONSTRUCTION.
- CONTRACTOR IS RESPONSIBLE FOR DETERMINING LOCATION AND INSTALLING VENTS AND DRAINS FOR HYDROSTATIC TESTING.
- CONTRACTOR IS RESPONSIBLE FOR FIELD SUPPORTING PIPING.

ENGINEERING COMPANY PERMIT STAMP			REGISTERED PROFESSIONAL ENGINEER STAMP			
6						
5						
4						
3						
2						
1						
REF	DRAWING NUMBER		DRAWING TITLE			
REFERENCE DRAWINGS						
1	2016/10/21	IFC FOR EWR 22324 STANTEC 110902387	AJH			
REV	DATE	DESCRIPTION	BY	CHK	ENG	APR
REVISION HISTORY						
<div> Husky Oil Operations Limited</div>						
RAVEN CREEK 02-20-050-18W5 COMPRESSOR STN						
TITLE DEHY. PACKAGE (X-320) PIPING ISOMETRIC PSV-325A&B INLET AND OUTLET						
SURFACE LOCATION 02-20-050-18W5						
ALTERNATE DWG NUMBER					REV NO	
HUSKY DWG NUMBER 02-20-050-18W5-IS-0185-01					1	
VENDOR DWG NUMBER					SCALE	
AMU/FLOC NUMBER -					NTS	
DCN NO			PROJECT NO EWR 22324			