

PRESSURE VESSEL & COLUMN INSPECTION REPORT

LSD: 03-06-049-18w5m

Date: Sep 15, 2015

SAP Equipment ID: 66129837

VESSEL STATIC DATA									
Plant Minehead Comp Stn				Op Unit			System		
Prov. Insp. # A0561919				CRN T6804.2			Equip Tag # n/a		
Equipment Description South Flare Knockout							Serial # 0602653-0001		
Manufacturer Pyramid Corp.							Vessel Class		
Internal Access: Description: 24" manway							Year Built 2006		
MAWP 100		PSI		@ 500		°F		MDMT -50 °F	
CODE :				RT : 2			PWHT : No		
Diameter 48in		Length (S/S) 120 in		OAL		in		Horizontal	
Shell Mat'l		Thickness		0.375		in		Corr Allowance 0.125 in	
Head Mat'l		Thickness		0.3125		in		Corr Allowance 0.125 in	
Nozzle Mat'l		Thickness				mm / in		Corr Allowance mm	
Internal Coating: YES				Internal Clad : NO			Capacity ft3		
Manway : YES				Inspection Port : NO			Saddle		
Nozzle Rating 300		lb ANSI		Painted : YES			Insulated YES		
PROCESS DATA									
Product Description Gas						Sweet			
Operating Pressure				PSI		Operating Temperature °F			
PSV STATIC DATA									
Serial No.	Location		Set Pressure	Capacity SCFM	Manufacturer	Model / Type		Service Date / Company	
PSV DETAILS									
	Type (Thread/Flange)			ANSI Rating			Size (inches)		
PRD Inlet									
PRD Outlet									
NDE Equipment Records									
Procedure#	Description	Manufacturer		Model#		Serial#		Due Date	

INSPECTION SUMMARY

Across road from main Minehead comp site. Visual internal inspection conducted after vessel had been opened and adequately cleaned. Internal access is through 24" manway on south head. Vessel is internally coated. Coating is on the bottom 2/3 of vessel (no coating on top 1/3 of vessel). Coating was found to be in good overall condition with only a few minor failures noted. Three small coating failures on manway nozzle and one small coating failure on bottom shell at 6:00. No corrosion noted at coating failure locations. Manway nozzle and dollar plate seating surfaces are in good condition with no corrosion or mechanical damage noted. Internal coating limited inspection of welds to top 1/3 of each circ and top shell nozzles. No corrosion, mechanical damage or defects noted on visually accessible welds. No corrosion damage or obstructions noted within visually accessible nozzles. Nozzle vortex breaker is in good condition and securely attached. Inlet nozzle internal piping (45 elbows) securely in place and in good condition.

All coating failures were patch repaired with Envirolite 124 - 2 part epoxy - by Streamline Inspection.

RECOMMENDATIONS

Maintain current inspection intervals.
Check on coating repairs at next internal inspection to determine effectiveness of spot patch coat repairs.
Review 2015 UT corrosion survey report.

NONCONFORMANCES / INSPECTION DEFICIENCIES

4 small coating failures noted - 3 on manway nozzle and 1 on bottom shell. No corrosion at coating failure locations.

INSPECTION PLANNING

Inspection Strategy	Availability	Inspection Interval
Inspection Date Sep 15, 2015	Date of Last Inspect	Date of Next Inspect

PRESSURE VESSEL & COLUMN INSPECTION REPORT


LSD: 03-06-049-18w5m

Date: Sep 15, 2015

SAP Equipment ID: 66129837

REPORT CERTIFICATION

The signatures below certify that inspections/tests have been completed in accordance with the identified inspection strategy and that the specified equipment is considered fit for service until the date of next inspection.

Inspected by	Ed Tymensen		Date	Sep 15, 2015
Company	Streamline Inspection Ltd	PESL # 000711	API #	27479
Reviewed and Approved by			Date	
		PESL #	API #	
Criticality Assessment Rerun		Inspection Planning Rerun		
Assessed Next Inspection Date				

PRESSURE VESSEL & COLUMN INSPECTION REPORT

LSD: 03-06-049-18w5m

Date: Sep 15, 2015

SAP Equipment ID: 66129837

DETAILED INSPECTION VISUAL INTERNAL

ID	Description	Condition	Location	NCR	Comments
V1	General Other (Please Explain)	Good	Overall		No major concerns noted
V2	Corrosion (depth, length, width)	Good			No corrosion noted
V3	Erosion	Good			No erosion noted
V4	Distortion	Good			No distortions noted
V5	Blisters	Good			No blisters noted
V6	Deposits	N/A			
V7	Heads	Good			No concerns noted. Bottom 2/3 is coated
V8	Welds	Good	top 1/3 of vessel		No concerns noted. Bottom 2/3 of vessel coating limiting visual access to welds
V9	Nozzles	Good			No corrosion, erosion or obstructions noted
V10	Shell	Good			No concerns noted. Bottom 2/3 is coated
V11	Gasket Surfaces	Good			No corrosion or mechanical damage
V21	Internals Other (Please explain)	Good	drain vortex breaker		Securely attached
V22	Demister	N/A			
V23	Baffle/Wier	N/A			
V24	Sparger	N/A			
V25	Thermowells	N/A			
V26	Metallic Linings	N/A			
V27	Nonmetallic Linings	Good	Bottom 2/3 of vessel		Internally coated. 4 small failures noted, 3 on manway nozzle and one on bottom shell. All failures were patch repaired with Enviroline 124 - 2 part epoxy - by Streamline Inspection
V30	Other Welded Attachments	N/A			
V31	Tubes	N/A			
V32	Tube sheet	N/A			

PRESSURE VESSEL & COLUMN INSPECTION REPORT

LSD: 03-06-049-18w5m

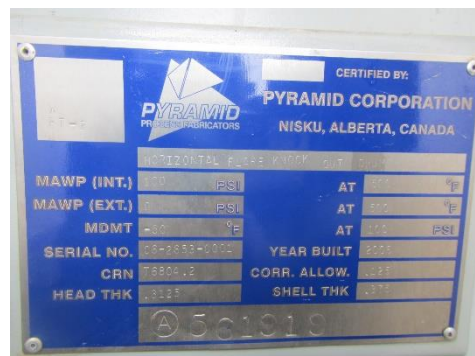
Date: Sep 15, 2015

SAP Equipment ID: 66129837

PHOTOS



LSD SIGN



DATAPLATE



INSPECTION STICKER



VESSEL OVERVIEW



INTERNAL ACCESS THROUGH MANWAY



INTERNAL OVERVIEW - BOTTOM 2/3 OF VESSEL COATED

PRESSURE VESSEL & COLUMN INSPECTION REPORT

LSD: 03-06-049-18w5m

Date: Sep 15, 2015

SAP Equipment ID: 66129837



VORTEX BREAKER



NOZZLE INTERNAL



BOTTOM SHELL SMALL COATING FAILURE



MANWAY NOZZLE COATING FAILURE



MANWAY NOZZLE COATING FAILURE








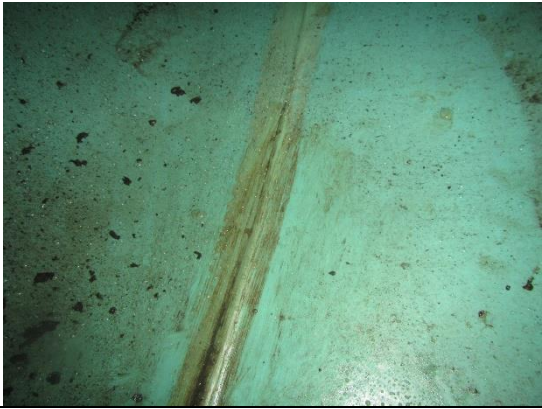
MANWAY NOZZLE COATING FAILURE

PRESSURE VESSEL & COLUMN INSPECTION REPORT

LSD: 03-06-049-18w5m

Date: Sep 15, 2015

SAP Equipment ID: 66129837

	
<p>MANWAY</p>	<p>TOP SHELL INLET PIPING 45's</p>
	
<p>TOP SHELL INLET PIPING 45's</p>	<p>BOTTOM SHELL</p>
	
<p>LONGSEAM</p>	<p>CIRC SEAM</p>

PRESSURE VESSEL & COLUMN INSPECTION REPORT

LSD: 03-06-049-18w5m

Date: Sep 15, 2015

SAP Equipment ID: 66129837



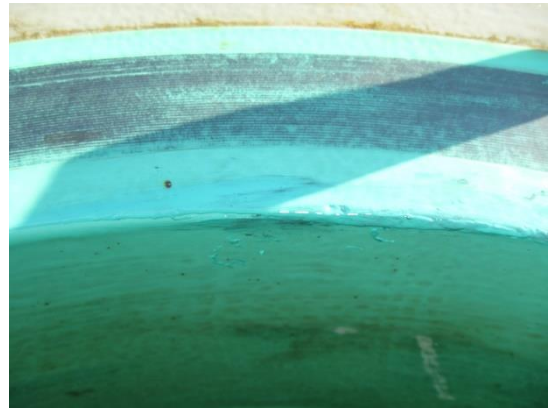
SHELL COATING REPAIR



MANWAY NOZZLE COATING REPAIR



MANWAY NOZZLE COATING REPAIR



MANWAY NOZZLE COATING REPAIR