

GENERAL NOTES:

1. THIS DRAWING IS TO BE READ IN CONJUNCTION WITH THE MECHANICAL FLOWSHEET.  
2. PROCESS PIPING TO BE DESIGNED TO ASME B31.3 2008 EDITION.  
3. PRESSURE VESSELS ARE TO BE REGISTERED IN ALBERTA.  
4. VESSELS AND PIPING TO BE INSULATED AS PER FLOWSHEET AND/OR FABRICATION DRAWINGS.  
PAINTING:  
- SURFACE PREPARATION: COMMERCIAL BLAST TO SSPC-SP6.  
- PRIMER:  
NON-INSULATED (<250°F): 1.5-2.5 mils DFT CLOVERDALE T-101 ZINC PHOSPHATE GREY OVERALL.  
NON-INSULATED (>250°F): 1.0-1.5 mils DFT CLOVERDALE B3208 ACRYLIC HEAT RESISTANT.  
INSULATED (<250°F): 1.5-2.5 mils DFT CLOVERDALE T-101 ZINC PHOSPHATE GREY OVERALL.  
INSULATED (>250°F): 5.0-8.0 mils DFT CLOVERDALE B3295 CLOVALINE EPOXY NOVALAC.  
- FINISHED PAINT:  
NON-INSULATED (<250°F): 1.5-2.5 mils DFT CLOVERDALE SERIES 111 (#20-F-34) WARM GREY MARINE ENAMEL.  
NON-INSULATED (>250°F): 1.0-1.5 mils DFT CLOVERDALE B3208 ACRYLIC HEAT RESISTANT.  
INSULATED (<250°F): NONE.  
INSULATED (>250°F): NONE.  
5. ALL ELEVATIONS SHOWN ARE FROM TOP OF MAIN SKID MEMBERS. DEPTH OF SKID IS 1'-0 1/4".  
6. ALL SKID EDGE CONNECTIONS TO BE HELD AT DIMENSIONS AND ELEVATIONS SHOWN FOR CUSTOMER TIE-INS.  
7. SKID IS DESIGNED FOR A SIX (6) POINT LIFT.  
8. 1/4" SERVICE VENTING: METER RUN MANIFOLD(S) ARE VENTED INDIVIDUALLY O/S BUILDING. BLEED TYPE INSTRUMENTS, REGULATOR BONNETS, INSTRUMENT CASES AND CONTROL VALVE ACTUATORS ARE NOT VENTED.  
9. 1 1/4" INSTRUMENT AIR HEADER AS SHOWN ON FLOWSHEET (SHOP TO RUN AS REQ'D) WITH 1/4" TAKE-OFFS o/w ISOLATION NEEDLE VALVE, REGULATOR, AND TUBING TO COMPLETE.  
10. REMOVE ALL FLOATS/DISPLACERS FROM ALL LEVEL CONTROLLERS AND SWITCHES. TAG AND CRATE FOR SHIPPING.  
11. ALL P.I. AND T.I. LOCATIONS ARE PROVIDED WITH SS TAGS FOR FIELD RE-INSTALLATION.  
12. PROTECT ALL OPENINGS FOR SHIPPING.  
13. ESTIMATED SHIPPING WEIGHT (LESS TOP SECTION OF T-400 & PIPING): 49,390 lbs.  
WEIGHT OF TOP SECTION OF T-400 & PIPING: 2,890 lbs.  
WEIGHT OF COOLER (E-404): 4,120 lbs.  
WEIGHT OF V-113 & SHIPPED LOOSE MAT'L'S: 9,690 lbs.  
14. TWO (2) HARD COPIES OF BOTH THE OPERATING MANUALS AND CONTROL DATA BOOKS TO BE PROVIDED.

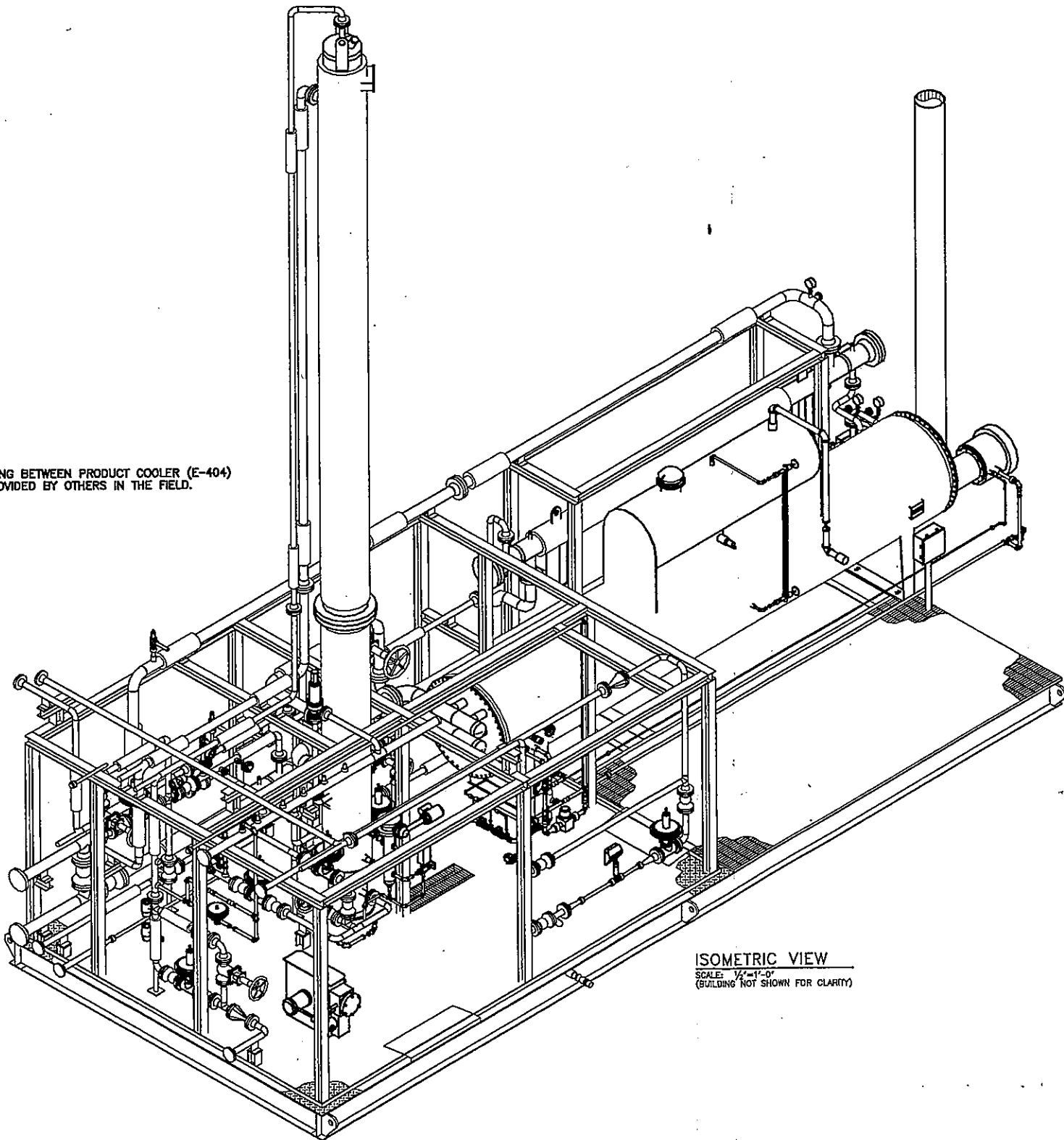
TIE-IN SCHEDULE:

- 1 NPS 4-CL300 ASME RFWN, RAW CONDENSATE INLET, B.O.P. @ ELEV. 0'-10"  
2 NPS 4-CL300 ASME RFWN, RAW CONDENSATE OUTLET TO FEED TANK, B.O.P. @ ELEV. 3'-1 1/2"  
3 NPS 2-CL300 ASME RFWN, CONDENSATE INLET FROM CONDITIONER, B.O.P. @ ELEV. 0'-10"  
4 NPS 2-CL300 ASME RFWN, PRODUCT TO COOLER (E-404), @ ELEV. 0'-10"  
5 NPS 2-CL300 ASME RFWN, PRODUCT FROM COOLER (E-404), @ ELEV. 0'-6"  
6 NPS 2-CL300 ASME RFWN, PRODUCT OUTLET, B.O.P. @ ELEV. 8'-6"  
7 NPS 2-CL300 ASME RFWN, OVERHEADS OUTLET, @ ELEV. 1'-0"  
8 NPS 3-CL150 ASME RFWN, FLARE HEADER, B.O.P. @ ELEV. 8'-6"  
9 NPS 2-CL150 ASME RFWN, DRAIN HEADER, @ ELEV. 0'-6"  
10 NPS 1-CL3000 NPT, SWEET FUEL GAS SUPPLY, B.O.P. @ ELEV. 8'-6"  
11 NPS 1-CL3000 NPT, INSTRUMENT AIR SUPPLY, B.O.P. @ ELEV. 8'-6"  
12 NPS 2-CL3000 NPT, REBOILER FILL, @ ELEV. 5'-1 1/4"  $\Delta$   
13 NPS 2-CL3000 NPT, SKID DRAIN, @ 0'-4" BELOW T.O.S.


DESIGN CONDITIONS:	CL300 (SWEET)	CL150 (SWEET)
D.P. & TEMP.	400 PSIG @ -20/200°F	150 PSIG @ -20/200°F
B.W. C.A.	1/16"	1/16"
NPT/SW C.A.	10% TO ASME B31.3	10% TO ASME B31.3
RADIOGRAPHY	NONE	NONE
P.W.H.T.	635 PSIG	1.5 TIMES D.P.
• HYDROTEST		
PIPING:		
• BW PIPING	1 1/2" SCH. XS, SA-106-B 2" - 6" SCH. STD, SA-106-B	2" - 3" SCH. STD, SA-106-B
SW PIPING	≤ 1 1/2" SCH. XS, SA-106-B	≤ 1 1/2" SCH. XS, SA-106-B
NPT PIPING	≤ 1 1/2" SCH. XS, SA-106-B	≤ 2" SCH. XS, SA-106-B
INSTRUMENT TUBING	1/4" O.D. (3/8" O.D. VENTS), 316 S.S.	1/4" O.D. (3/8" O.D. VENTS), 316 S.S.
PROCESS TUBING	1/4" O.D., 316 S.S.	1/4" O.D., 316 S.S.
FITTINGS:		
BW FITTINGS	1 1/2" SCH. XS, SA-234-WPB 2" - 6" SCH. STD, SA-234-WPB	2" - 3" SCH. STD, SA-234-WPB
SW FITTINGS	≤ 1 1/2" CL3000, SA-105N	≤ 1 1/2" CL3000, SA-105N
NPT FITTINGS	≤ 1 1/2" CL3000, SA-105N	≤ 2" CL3000, SA-105N
FLANGES	RFWN BORE TO PIPE, SA-105N	RFWN BORE TO PIPE, SA-105N
GASKETS	304SS x 1/4" THK. FLEXICARB FLEXITALIC	304SS x 1/4" THK. FLEXICARB FLEXITALIC
BOLTING	SA-193-B7/SA-194-2H SCH. 160, SA-106-B	SA-193-B7/SA-194-2H SCH. 160, SA-106-B
PUMP/L.G. NIPPLES	S.S. PARKER A-LOK (DOUBLE FERRULE)	S.S. PARKER A-LOK (DOUBLE FERRULE)
INSTR. TUBING FITTINGS	S.S. PARKER A-LOK (DOUBLE FERRULE)	S.S. PARKER A-LOK (DOUBLE FERRULE)
PROCESS TUBING FITTINGS	S.S. PARKER A-LOK (DOUBLE FERRULE)	S.S. PARKER A-LOK (DOUBLE FERRULE)

- \* LOW PRESSURE NPT/SW PIPING IS AIR TESTED AT 100 PSIG.  
\*\* PIPE SCHEDULE IS SELECTED BASED ON PRESSURE AND CORROSION LIMITS.  
\*\*\* ALLOW 1/16" GAP IN SOCKET WELDING.

\*\* NOTE: \*\*  
ALL INTERCONNECTING PIPING BETWEEN PRODUCT COOLER (E-404) AND MAIN SKID TO BE PROVIDED BY OTHERS IN THE FIELD.



ISOMETRIC VIEW  
SCALE: 1/4"=1'-0"  
(BUILDING NOT SHOWN FOR CLARITY)

				DRAWN	RWM	 <b>GAS &amp; OIL</b> <b>PRODUCTION EQUIPMENT LTD.</b> <small>107 OF MC ALCO GAS &amp; OIL PRODUCTION EQUIPMENT LIMITED PARTHOMBA</small>
				DATE	2011-02-03	
				SCALE	SHOWN	
				CHKD		
B-2011-8169-500	BILL OF MATERIALS	1	2011-02-03	KMS	AS BUILT	<b>ISOMETRIC VIEW &amp; NOTES</b> <b>CONDENSATE STABILIZER UNIT</b> <b>TAG #: T-400</b> LOCATION: MINEHEAD COMPRESSOR STATION L.S.D.: 03-08-049-18 WSM CUSTOMER: HUSKY OIL OPERATIONS LIMITED % EXCELSIOR ENGINEERING LTD. DWG/SHOP ORDER: <b>D-2011-8169-500-001/004</b> REV. 1
D-2011-8169-500-003 TO 004	CONDENSATE STABILIZER UNIT - SECTIONS	D	2011-02-03	RWM	ISSUED FOR CONSTRUCTION	
D-2011-8169-500-002	CONDENSATE STABILIZER UNIT - PLAN	B	2011-02-03	RWM	REVISED PER CUSTOMER COMMENTS	
D-2011-8169-500-001	MECHANICAL FLOWSHEET	A	2011-02-03	RWM	ISSUED FOR CUSTOMER APPROVAL	
DWG.	DESCRIPTION	REV.	DATE	REV.	DESCRIPTION	
REFERENCE DRAWINGS				REVISIONS		