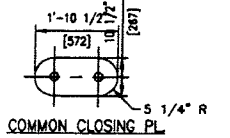
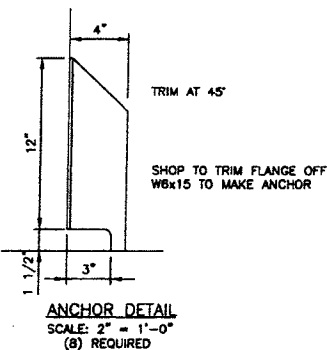
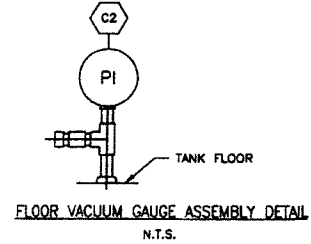
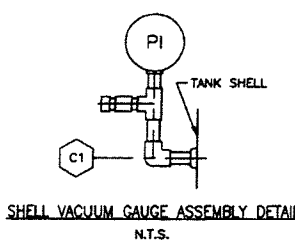
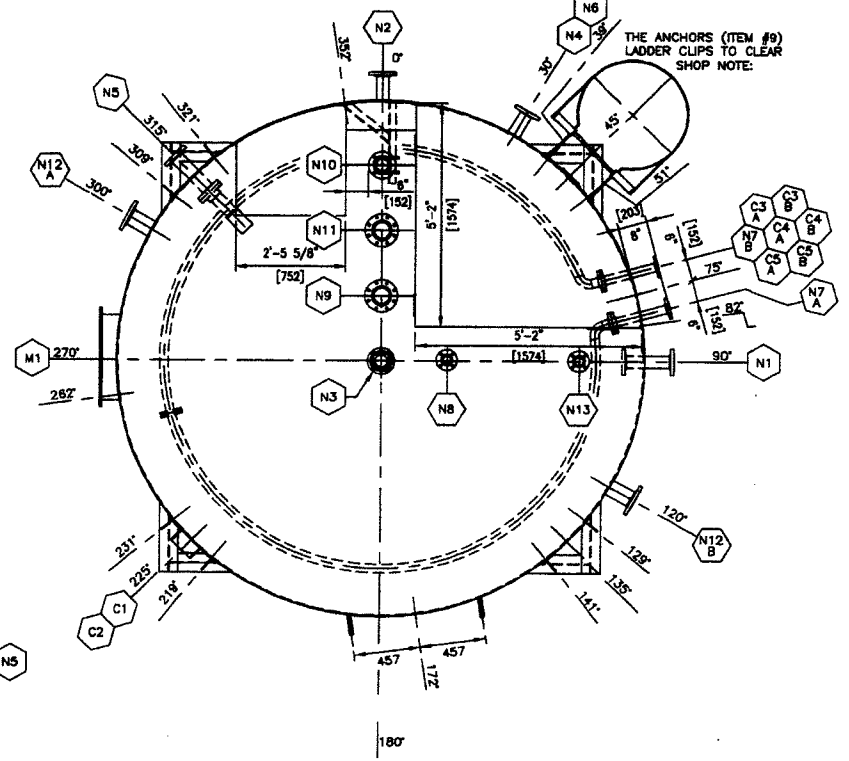
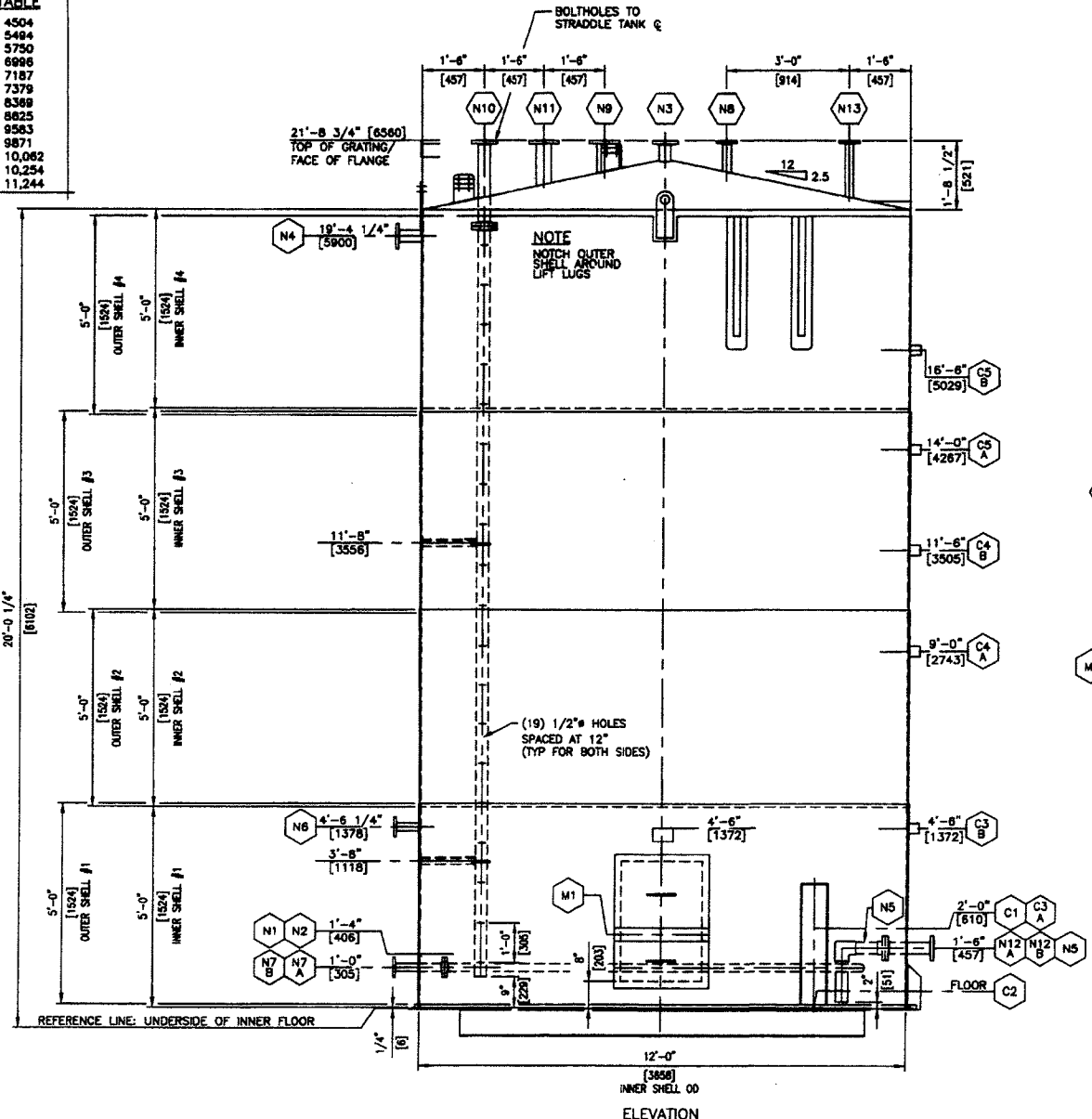


THIS DRAWING IS THE PROPERTY OF NUSCO SUPPLY & MANUFACTURING INC. AND IS LOANED TO THE RECIPIENT FOR THEIR CONFIDENTIAL USE ONLY. IN CONSIDERATION OF THE LOAN OF THIS DRAWING, THE RECIPIENT AGREES THAT IT SHALL NOT BE USED IN ANY WAY DETRIMENTAL TO THE INTERESTS OF NUSCO SUPPLY & MANUFACTURING INC. THAT IT SHALL BE RETURNED UPON REQUEST AND THAT IT SHALL NOT BE REPRODUCED, COPIED, LENT OR OTHERWISE DISPOSED OF DIRECTLY OR INDIRECTLY WITHOUT THE WRITTEN PERMISSION OF NUSCO SUPPLY & MANUFACTURING INC.

LAYOUT ORIENTATION TABLE

| | | | | | |
|------|---|--------|------|---|--------|
| 380' | = | 11,500 | 141' | = | 4504 |
| 1' | = | 31.844 | 172' | = | 5484 |
| 30' | = | 958 | 180' | = | 5750 |
| 39' | = | 1246 | 219' | = | 6996 |
| 45' | = | 1437 | 225' | = | 7187 |
| 51' | = | 1629 | 231' | = | 7379 |
| 75' | = | 2396 | 282' | = | 8369 |
| 82' | = | 2619 | 270' | = | 8825 |
| 90' | = | 2875 | 300' | = | 9563 |
| 120' | = | 3833 | 309' | = | 9871 |
| 129' | = | 4121 | 315' | = | 10,082 |
| 135' | = | 4312 | 321' | = | 10,254 |
| | | | 352' | = | 11,244 |



NOZZLE SCHEDULE

| MARK | SIZE | RATING | TYPE | | SERVICE | NOZZLE BORE | REPAD | PROJ'N | |
|--------|---------|-------------|----------|----------|--------------------------|-------------|-------------------|--------|--------|
| | | | EXTERNAL | INTERNAL | | | | 1/5 | 0/5 |
| N1 | 3" | 150# | RFSO | RFSO | INLET | STD | 10 1/2"ODx3/16"PL | 6" | 8" |
| N2 | 3" | 150# | RFSO | N/A | WATER OUTLET | STD | 10 1/2"ODx3/16"PL | - | 8" |
| N3 | 3" | 150# | RFSO | N/A | VAPOUR OUT | STD | N/A | - | SHOWN |
| N4 | 3" | 150# | RFSO | N/A | LSHH | STD | 10 1/2"ODx3/16"PL | - | 8" |
| N5 | 3" | 150# | RFSO | RFSO | TRUCK OUTLET c/w SYPHON | STD | 10 1/2"ODx3/16"PL | 6" | 8" |
| N6 | 2" | 150# | RFSO | N/A | THERMOWELL | STD | 10 1/2"ODx3/16"PL | - | 8" |
| N7 A | 2" | 150# | RFSO | RFSO | HEATCOIL | STD | SEE DETAIL | 8" | SHOWN |
| N7 B | 2" | 150# | RFSO | RFSO | HEATCOIL | STD | SEE DETAIL | 8" | SHOWN |
| N8 | 2" | 150# | RFSO | N/A | FUEL GAS BLANKET | STD | N/A | - | SHOWN |
| N9 | 4" | 150# (125#) | RFSO | N/A | PVRV | STD | N/A | - | SHOWN |
| N10 | 3" | 150# | RFSO | RFSO | LT c/w STILLWELL | STD | N/A | 8" | SHOWN |
| N11 | 4" | 150# (125#) | RFSO | N/A | ERV | STD | N/A | - | SHOWN |
| N12 A | 4" | 150# | RFSO | N/A | ANODE | STD | 12"ODx3/16"PL | - | 8" |
| N12 B | 4" | 150# | RFSO | N/A | ANODE | STD | 12"ODx3/16"PL | - | 8" |
| N13 | 2" | 150# | RFSO | N/A | SPARE | STD | N/A | - | SHOWN |
| C1 | 1/2" | 3000# | CPLG | N/A | VACUUM TEST (SHELL) | N/A | N/A | - | - |
| C2 | 1/2" | 3000# | CPLG | N/A | VACUUM TEST (FLOOR) | N/A | N/A | - | - |
| C3 A,B | 1" | 3000# | CPLG | N/A | LEVEL GAUGE | N/A | N/A | - | 2 1/2" |
| C4 A,B | 1" | 3000# | CPLG | N/A | LEVEL GAUGE | N/A | N/A | - | 2 1/2" |
| C5 A,B | 1" | 3000# | CPLG | N/A | LEVEL GAUGE | N/A | N/A | - | 2 1/2" |
| M1 | 24"x36" | API 12F | - | N/A | CLEANOUT c/w SPLIT COVER | N/A | 30"x3/16"PLx48"LG | - | 4" |

DESIGN DATA

BUILT ACCORDING TO API-12F(MODIFIED)/NUSCO CONSTRUCTION STANDARDS

INTERSTITIAL SPACE BETWEEN INNER & OUTER SHELLS IS VACUUM TESTED & LEFT ON INDEFINITELY

400 BBL 12'-0" DIA. x 20'-0" HIGH DOUBLE WALL & FLOOR STEEL STORAGE TANK

DESIGN PRESSURE: 18 OR PRESS./1 OR VAC. ROOF MATERIAL: A-36/260W

OPERATING PRESSURE: 5 OR PRESS./-0.4 OR VAC. FLOOR MATERIAL: A-36/260W

INTERCHISE TEST: VAC. -70 kPa INNER SHELL MATERIAL: A-36/260W

SET POINT: -50 kPa OUTER SHELL MATERIAL: A-569

SHIPPING WEIGHT: 21,000 LBS. FLOOR DIAMETER: (OUTER) 150" OD

AIR TEST: 1.5 PSIG (PRIMARY TANK) (INNER) 148" OD

SERVICE: SOLAR (OUTER) 144" OD

CORROSION ALLOWANCE: NONE SHELL DIAMETER: (INNER) 144" OD

LABELLED/REGISTERED: NO. ROOF CUT DIAMETER: 147" OD

RADIOGRAPHY: N/A. FLOOR THICKNESS: (OUTER) 1/4"

(INNER) 1/4"

SHELL THICKNESS: (OUTER) 10 GAUGE

(INNER) 3/16"

SURFACE PREP.-INTERNAL: INCLUDES EXTERNAL SURFACES ONLY OF INTERNAL PIPING (HEATCOIL EXTERNALLY COATED)

INTERNAL COATING: SANDBLAST AS PER SSPC-SP#5

TEN TO TWELVE (10-12) MILS OF DEVOE 253 (HOLIDAY FREE)

SURFACE PREP.-EXTERNAL: SANDBLAST AS PER SSPC-SP#7 TO SHL, RF & BOTTOM OF FLOOR

EXTERNAL COATING: ONE (1) COAT OF BAR-OX 752 PRIMER TO SHL, RF & BOTTOM OF FLOOR

INSULATION: 2" THK FIBERGLASS (R8) INSULATION c/w ALUMINIUM CLADDING, S.S. BANDING & CAD. PLATED SCREWS TO SHELL & ROOF

ONE (1) COAT OF CARBOLINE WHITE #1898 FINISH PAINT ON ALL UNINSULATED AREAS & BOTTOM OF FLOOR

- GENERAL NOTES:**
- 1.) ALL INTERNAL COATING THICKNESS MEASUREMENTS TO BE MEASURED AND RECORDED PER SSPC-PA2
 - 2.) HOLIDAY TESTING OF INTERNALLY COATED SURFACES TO BE PERFORMED PER NACE RP0188-88
 - 3.) ITEM #1 TO BE INTERNALLY AND EXTERNALLY COATED WITH DEVOE 253 (HOLIDAY FREE) BY OTHERS
 - 4.) ITEM #1 TO BE ONE CONTINUOUS PIPE NO CIRC. SEAMS ALLOWED
 - 5.) MAXIMUM EXTERNAL PROJECTION ON ALL COUPLINGS FOR INSULATION.

| | | | | | | | | | | | |
|---------------------------------------------------------------------------------------------------------------------------------------------------------------------------------------------------------------------------------------------------------------|--|--|--|-------------------------------------------------------------------------------------------------------------------------|--|---------------------------------------------------------------------------------|--|--------------------------------------------------|--|-------------------------------------------------------------------------|--|
| <p>NUSCO SUPPLY & MANUFACTURING INC.</p> <p>PROJECT: PETRO CANADA OIL & GAS</p> <p>CLIENT: c/o COLT ENGINEERING CORP.</p> <p>TITLE: 400 BBL D/W & D/FLR STORAGE TANK</p> <p>DESCRIPTION: 12'-0" OD x 20'-0" HIGH TAG: T-130 WATER TANK</p> | | | | <p>DATE: 04/01/14</p> <p>BY: YB</p> <p>DESCRIPTION: CHANGED ORIENTATION OF NOZZLES, SHAPE OF PLATFORM, ADD CPL (FC)</p> | | <p>DATE: 03/12/08</p> <p>BY: YB</p> <p>DESCRIPTION: ISSUED FOR CONSTRUCTION</p> | | <p>DATE: 1/2" = 1'-0"</p> <p>SCALE: 03/08/02</p> | | <p>PROJECT NO: 007659</p> <p>DRAWING NO: T2261-A</p> <p>SHEET NO: 1</p> | |
| <p>REVISIONS</p> | | | | | | | | | | | |