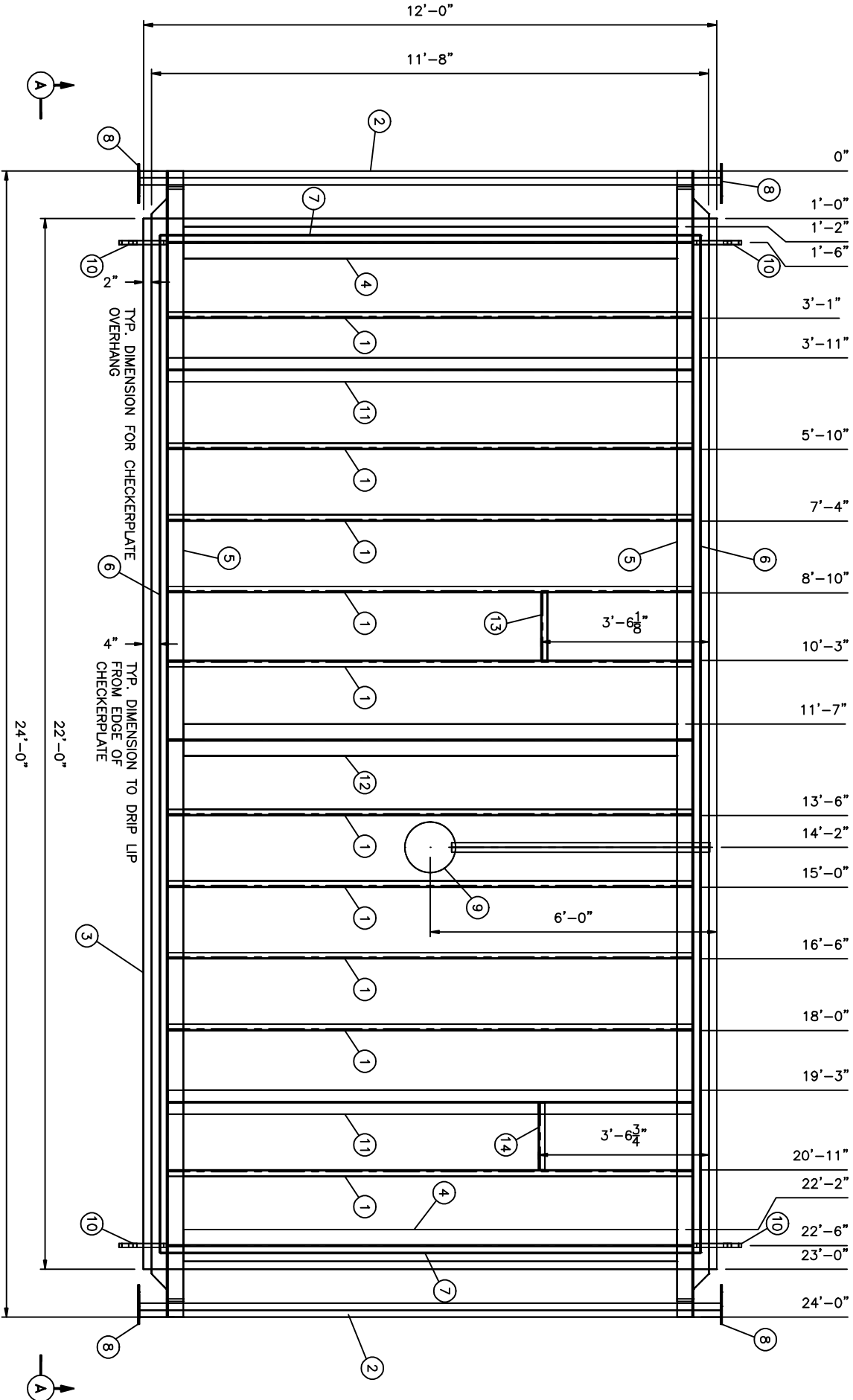
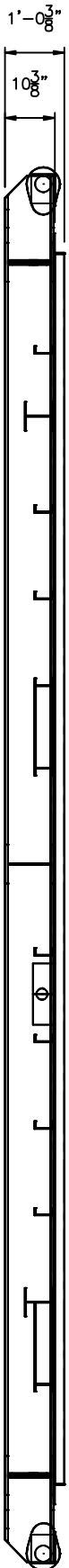


BILL OF MATERIAL			
MARK	QTY	LONG ANNOTATION	LENGTH
1	10	CHANNEL: C4XS4#	10'-11 5/8"
2	2	PIPE NPS 3-STD - ROLL END	12'-2"
3	1	CHECKERPLATE-1/4" X 22' X 12'	22'-0"
4	2	W10 X 45#	10'-11 5/8"
5	2	W10 X 45#	24'-0"
6	2	FLATBAR: 2 X 1/4	21'-3 1/2"
7	2	FLATBAR: 2 X 1/4	11'-3 1/2"
8	4	PLATE-3/8"THK X 7" X 5" - ROLL END TEAR DROP	7"
9	1	STD. FLINT Ø12" DRAIN c/w 65" 2"NPS PIPE TOE	65"
10	4	PLATE-1"THK X 12" X 8 11/16" - LIFT LUGS	12"
11	2	W6 X 15#	10'-11 5/8"
12	1	W10 X 45#	10'-11 5/8"
13	1	CHANNEL: C4XS4#	1'-5"
14	1	CHANNEL: C4XS4#	1'-4 7/8"

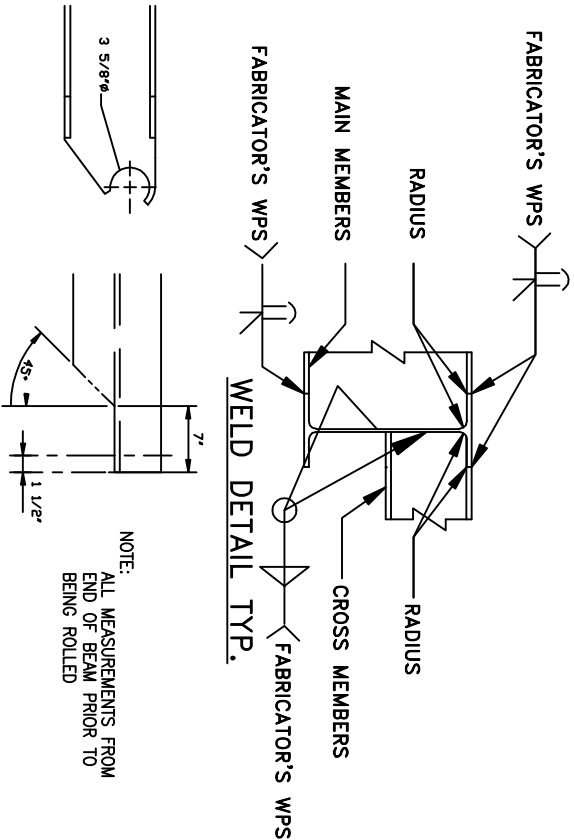


PLAN
SCALE: N.T.S.



ELEVATION
SCALE: N.T.S.

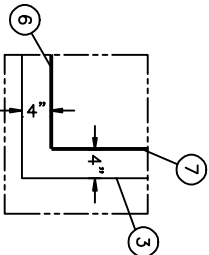
BEAM END DETAIL
SCALE: N.T.S.



NOTES

- SHOP TO LOCATE CHECKERPLATE SEAMS OVER CHANNELS.
- DISTANCE BETWEEN INSIDES OF CHANNELS MAY NOT EXCEED 18".
- MAIN MEMBERS SHALL BE CSA G40.21 44W OTHER STEEL MINIMUM SA-36.
- FILLET WELDS ARE 1/4".
- CROSS MEMBERS ARE TO BE COPED TO MAINS AND FULLY WELDED.
- FULL PEN. WELDS ON FLANGE TO FLANGE WELDS ARE WELD DETAIL #3.
- ALL CHECKERPLATE SEAMS ARE WELD DETAIL #2.
- CHECKERPLATE SHALL BE ATTACHED TO STRUCTURAL MEMBERS
- DIMENSIONS FEET AND INCHES.
- SKID WEIGHT APPROX. 7,600 LBS.
- APPROX WEIGHT OF PACKAGE - LBS.
- 2" DRIP LIP AROUND PERIMETER OF CHECKERPLATE
- MAIN MEMBERS TO BE ONE SOLID PIECE AT 24'-0" LONG.
- UNDERSIDE OF FLOOR WILL BE COATED WITH 4" OF SPRAY TYPE FIRE RETARDANT INSULATION.
- LIFTING TO BE DONE BY LIFTING LUGS ONLY.
- END LOCATIONS TO BE USED FOR TOWING ONLY.

2" CONTAINMENT DETAIL



WELD DETAIL 1

WELD DETAIL 2

WELD DETAIL 3

LIFT LUG DETAIL

2" HOLE (NTS)

R 3/4" TYP.

DESIGNED BY: PES

DRAWN BY: PES

CHECKED BY:

APPROVED BY:

DATE: 11/03/01

CUSTOMER: HUSKY OIL OPERATION LIMITED

PROJECT NO.: 1899562

DRAWING NO.: PES-10060708CO

TITLE: 12'-0" x 22'-0" SKID FOR SWEET SERVICES ESDV & METERING PACKAGED

REVISION NO.: -

REV. NO.: 1

11-04-06

11-03-21

11-03-16

AS BUILT

ISSUED FOR CONSTRUCTION

ISSUED FOR APPROVAL

NO.

DATE

DWN/CHK/D/APP.

Paintearth

ENERGY SERVICES

THIS DRAWING IS THE PROPERTY OF PAINTEARTH ENERGY SERVICES. ANY UNAUTHORIZED REPRODUCTION OR TRANSMISSION WITHOUT WRITTEN AUTHORIZATION IS STRICTLY PROHIBITED.