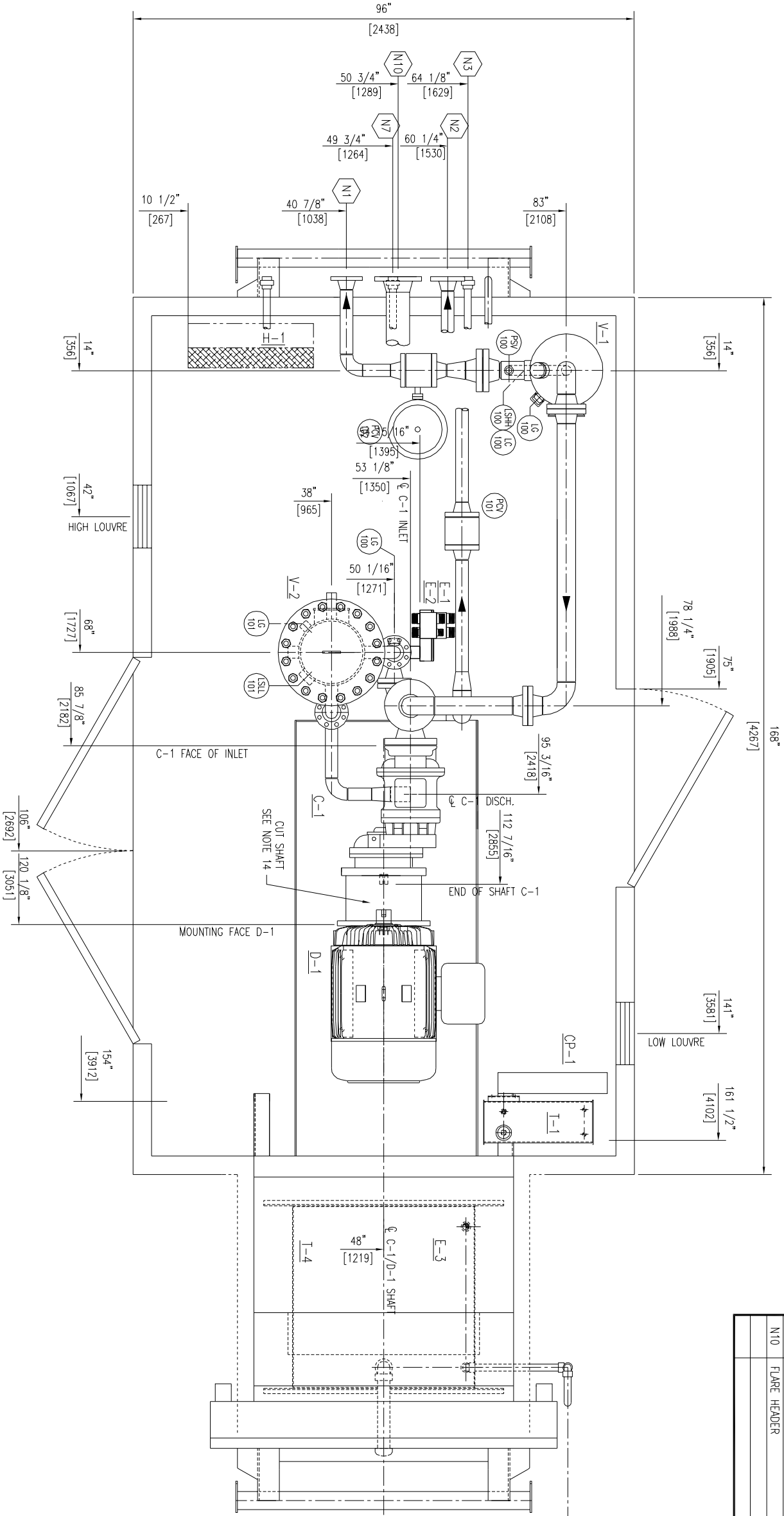


SKID EDGE CONNECTIONS				
MARK	SERVICE	SIZE	RATING	TYPE
N1	GAS INLET	2"	300#	RFWN
N2	GAS OUTLET	2"	300#	RFWN
N3	DRAIN	1"	3000#	NPT UNION
N6	PURGE & FUEL GAS SUPPLY	1"	3000#	NPT UNION
N7	INSTRUMENT AIR	1"	3000#	NPT UNION
N10	FLARE HEADER	4"	150#	RFWN



- GENERAL NOTES

1. ALL DIMENSIONS OUTSIDE OF BRACKETS ARE IN INCHES.  
ALL DIMENSIONS WITHIN ( ) ARE IN mm.

2. ALL TAIL DIMENSIONS ARE FROM DATUM.

3. ALL WELDED PIPING TO BE PHOTO TESTED TO BS1.3

4. ALL PROCESS PIPING TO BE LEAK TESTED TO BS1.3

5. ALL PIPING TO BE SUBJECT TO 10% RADIOGRAPHY

6. WELDING PROCEDURES TO BE PERFORMED TO MEET A 2Z HPC WARENESS TEST.

7. SEE CHART FOR PIPING/FITTING FOR MATERIAL/RAILING REQ.

8. TUBING TO BE SS. FITTINGS TO BE CROMIUM PLATED W/ SS PRIMARY FERROULE & CS SECONDARY FERROULE.

9. ALL PIPING & TUBING TO BE SUPPORTED AS REQ'D.

10. ALL PIPING TO COMPLY WITH ANSI B31.3 & THE SPECS PER C.C.C.

11. NON-CODE

12. -4M-150 CLASS SHEET

13. -6A-300 CLASS SHEET

14. -4S-150 CLASS SPOUR

15. -6S-300 CLASS SPOUR
- NOTES

11. SURFACE PREP: -

PAINT: 1 S/C GENERAL PAINT 16010, SELF PRIMING, GLOSS URETHANE ENAMEL, CONCEPT TAN

12. SHIPPING WEIGHT IS APPROX.: 13000 LBS (5897 KGS)

13. ROOF VENTS REMOVED FOR SHIPPING

14. CUT SHAFT LENGTH BY APPROX. 4.65'; LEAVE APPROX. 2.60" USABLE SHAFT LENGTH

15. HOLD ALL DIMENSIONS; IF THESE MEASUREMENTS CAN NOT BE MET, NOTIFY CONCEPT COMPRESSION

REV	DESCRIPTION	DATE	BY	APPR.
2	AS-BUILT	APR 15/08	T.K.	
1	ADD NOTE TO D-1 SHAFT	MAR 17/08	T.K.	
0	ISSUED FOR CONSTRUCTION	MAR 10/08	T.K.	
A	ISSUED FOR REVIEW	JULY 12/08	T.K.	

GENERAL ARRANGEMENT				HUSKY	
G1/TECO 100HP 405 TC				CC100E BOOSTER	
NCC # 16821				LSD: TBA	
E. PETERS				100627-201	
FEB 09/06				2	