

Imperial Oil Resources – ExxonMobil Canada Ltd.

STATIC EQUIPMENT INSPECTION REPORT

Item Inspected:	BOOSTER BLOWCASE
Location:	PINE CREEK 6-22-57-20-W5M
ABSA #:	A-457111 A457111
CRN #:	I 9454.213
Serial #:	00-742
SAP #:	
IORL#:	PID-014
Damage Code:	
AITEC Job #:	5301-6845

PSV #:	91	PSV PIPING	PSV
Service Date:	08 2009		
Set Press:	635 PSI		
Capacity:	1306 SCFM		
Serial #:	92108		

MAWP: (Shell)	1745 psi	@	300 °F
(Tube)		@	°

Inspection requested by: WILBUR SCHUTTE

Inspection date: AUG 14, 2009

Inspection performed by: ROGER LORENSEN

Inspector's Certification: API 510 26153 / ABSA 000212

Chief Inspector & In-Service Cert. #: [Signature] 038

Inspection Interval: 6 YEARS UT/EXT

Remedial Action

- ☒ no action required
- ☐ coating/lining repairs
- ☐ coating / lining
- ☐ repair weld - S.R.
- ☐ repair weld - no S.R.
- ☐ ground out
- ☐ replaced
- ☐ monitor

Access & Coverage

- ☐ poor cleaning
- ☒ adequately cleaned
- ☐ internal inspection
- ☐ partial int. inspection
- ☒ external inspection
- ☐ NDE inspection
- ☐ internal visual + NDE
- ☐ Installation Inspection

Other

- ☒ see comments
- ☐ baffle / weir damage
- ☐ support ring damage
- ☐ flange corrosion
- ☐ burner misaligned
- ☐ bolting damage
- ☐ downcomer corrosion
- ☐ valve caps missing

Shell

- ☐ top
- ☐ bottom

- ☒ good condition
- ☐ external corrosion
- ☐ internal corrosion
- ☐ pitted - light
- ☐ pitted - severe
- ☐ scaled - light
- ☐ scaled - heavy
- ☐ blistered

Nozzles

- ☒ good condition
- ☐ internal corrosion
- ☐ cracked
- ☐ scaled
- ☐ plugged
- ☐ poor welding
- ☐ leaking

External Protection

- ☒ good condition
- ☐ fireproofing cracked
- ☐ insulation damaged
- ☐ paint deteriorated
- ☐ corrosion under insulation (CUI)

Welds

- ☒ good condition
- ☐ corroded
- ☐ cracked
- ☐ broken
- ☐ poor quality

Supports

- ☒ good condition
- ☐ distorted
- ☐ cracked
- ☐ broken
- ☐ poor installation
- ☐ bolts missing/loose

Heads

- ☐ top
- ☒ right N

- ☒ good condition
- ☐ external corrosion
- ☐ internal corrosion
- ☐ pitted - light
- ☐ pitted - severe
- ☐ scaled - light
- ☐ scaled - heavy
- ☐ blistered

Heads

- ☐ bottom
- ☒ left S

- ☒ good condition
- ☐ external corrosion
- ☐ internal corrosion
- ☐ pitted - light
- ☐ pitted - severe
- ☐ scaled - light
- ☐ scaled - heavy
- ☐ blistered

Internal Protection

- ☐ coating
- ☐ lining

- ☐ good condition
- ☐ blistered - light
- ☐ blistered - severe
- ☐ disbanded
- ☐ chipped
- ☐ holidays
- ☐ mechanical damage
- ☐ missing

Anodes

- ☐ good condition
- ☐ dirty
- ☐ consumed 20%
- ☐ consumed 50%
- ☐ consumed 80% +
- ☐ missing

STATIC EQUIPMENT INSPECTION REPORT - Continued

Mist Screen

N/A

- ☐ good condition
- ☐ dirty
- ☐ dislodged
- ☐ broken
- ☐ missing
- ☐ tie-downs missing

Heating Coil

N/A

- ☐ good condition
- ☐ corrosion
- ☐ cracked
- ☐ scaled
- ☐ worn
- ☐ loose
- ☐ poor installation

Manways

NONE

- ☐ good condition
- ☐ coating damage
- ☐ internal corrosion
- ☐ mechanical damage

Trays

N/A

- ☐ good condition
- ☐ collapsed
- ☐ distorted (bent)
- ☐ loose
- ☐ missing
- ☐ wear
- ☐ corrosion
- ☐ poor installation

Firetubes

N/A

- ☐ good condition
- ☐ cracked
- ☐ corrosion
- ☐ scaled
- ☐ heat impinged
- ☐ coated
- ☐ wear

Tube Bundle

N/A

- ☐ good condition
- ☐ pitted - light
- ☐ pitted - severe
- ☐ scaled
- ☐ plugged
- ☐ damaged
- ☐ wear
- ☐ erosion

Tubesheet

N/A

- ☐ good condition
- ☐ general corrosion
- ☐ pitted - light
- ☐ pitted - severe
- ☐ erosion
- ☐ damaged

Channel Head

N/A

- ☐ good condition
- ☐ general corrosion
- ☐ pitted - light
- ☐ pitted - severe
- ☐ erosion
- ☐ scaled
- ☐ coated

Refractory

N/A

- ☐ good condition
- ☐ cracked (minor)
- ☐ spalled
- ☐ missing
- ☐ damaged
- ☐ badly cracked

Tube

N/A

- ☐ good condition
- ☐ external corrosion
- ☐ internal corrosion
- ☐ thinning
- ☐ bulged
- ☐ heat impinged
- ☐ distorted
- ☐ erosion

Drum

- ☐ mud
- ☐ steam

N/A

- ☐ good condition
- ☐ damaged internals
- ☐ internal corrosion
- ☐ cracking
- ☐ scaling

Floor

N/A

- ☐ external corrosion
- ☐ internal corrosion
- ☐ pitted - light
- ☐ pitted - severe
- ☐ edge settlement
- ☐ weld cracking
- ☐ sludge
- ☐ previous repairs

COMMENTS:

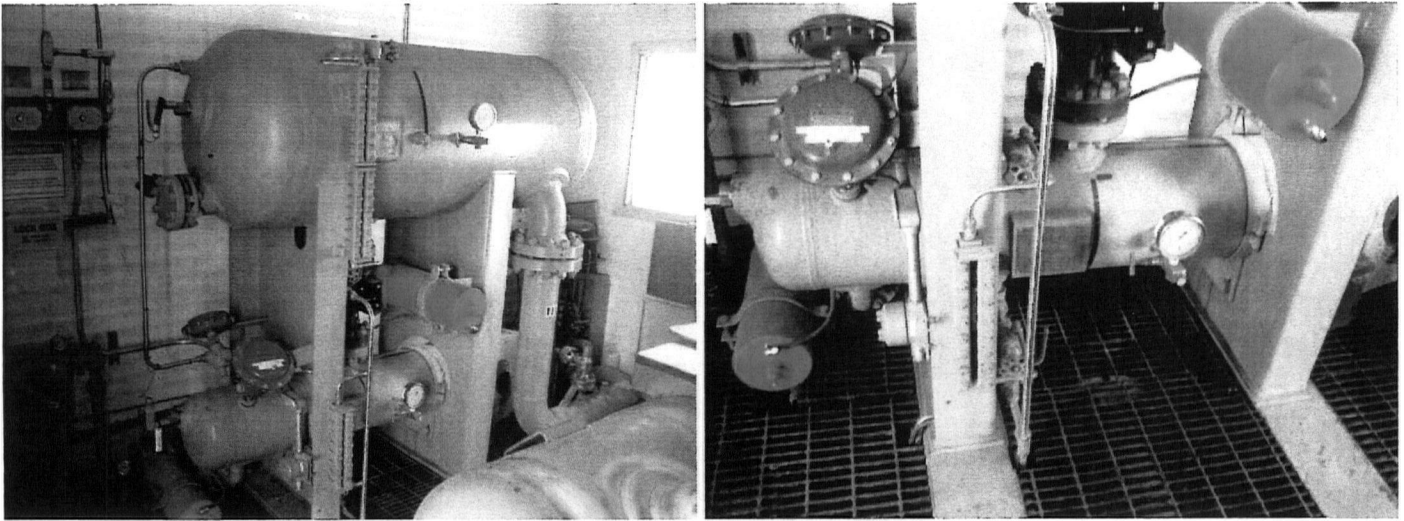
EXTERNAL

- Located inside Booster Compressor building bolted tight to floor
- Nameplate secure and legible
- Ground to support noted
- Paint in good condition
- Sight glass fouled
- Pressure gauge in good condition
- Piping appears adequately supported
- No concerns noted, near like new condition

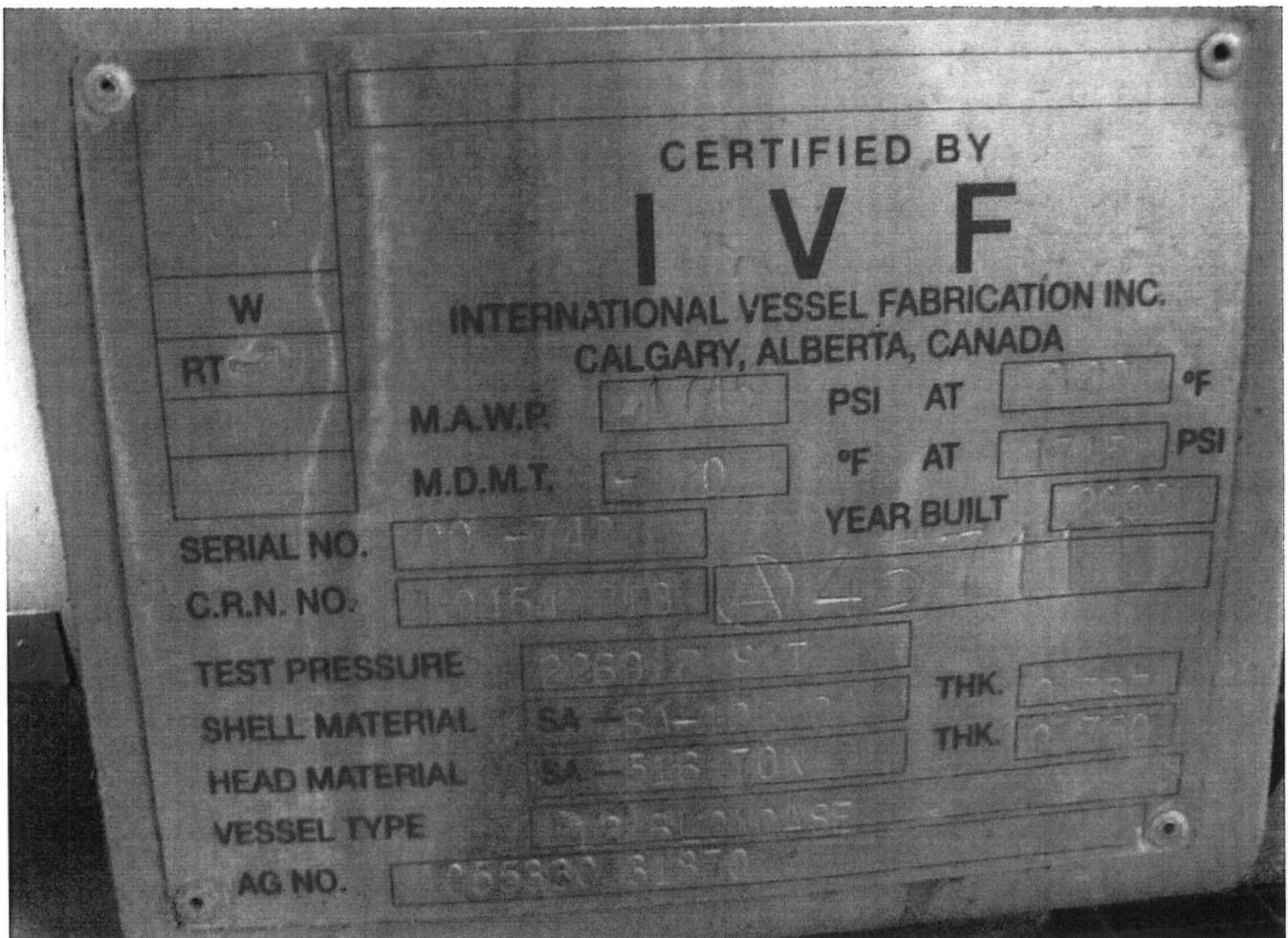
RECOMMENDATIONS:

- Acceptable for continued service

PICTURES:



BOOSTER BLOWCASE AT BOTTOM



NAMEPLATE